

# IT'S PAPA WHO PAYS!

By JIMMY MURPHY

Registered U. S. Patent Office.

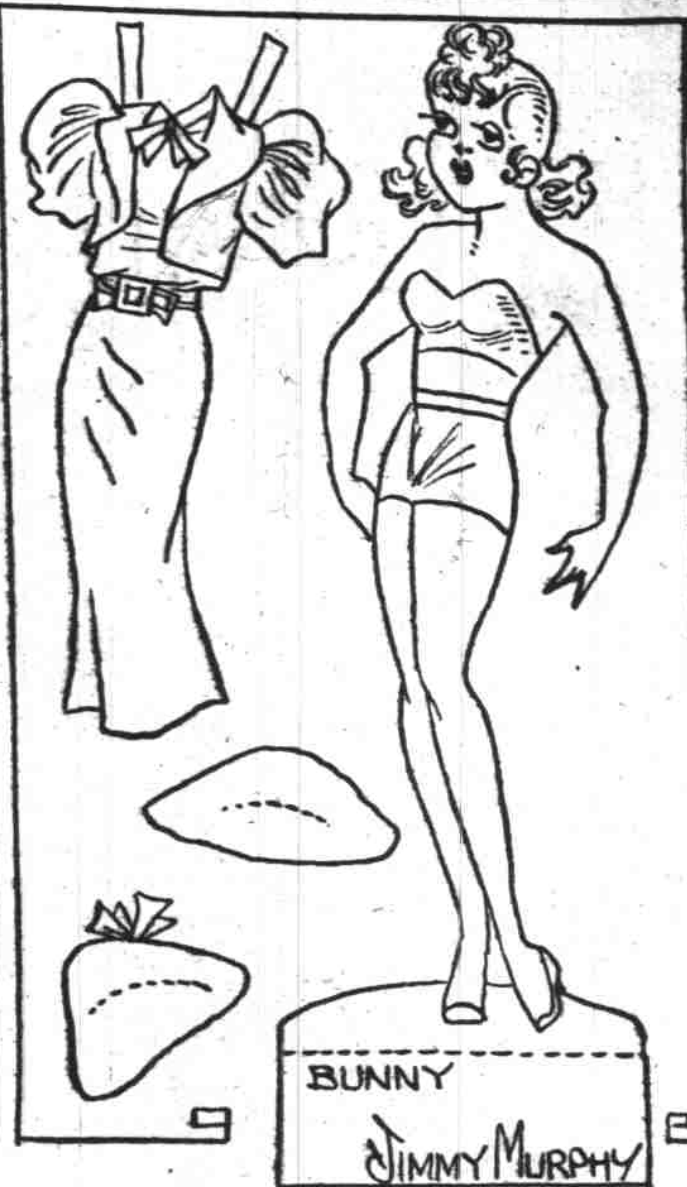
OUR AMATEUR SHOW WILL MAKE A HIT, BUT WE'VE GOTTA PUT MORE PEP IN THE BURGLARY SCENE--



THE PART WHERE YOU TIE UP THE BUTLER AND ESCAPE WITH THE JEWELS IS TOO TAME--



I'LL THINK IT OVER AND PHONE YOU LATER, JERRY!



BUNNY

JIMMY MURPHY

I KNOW HOW TO IMPROVE THAT SCENE!



I'VE GOT IT ALL FIGURED OUT, JERRY-- INSTEAD OF TYING THE BUTLER UP I'LL SHOOT HIM AND THEN GRAB THE JEWELS



PST, OFFICER!



YOU MAY BE ALL RIGHT, BUT WE'LL CHECK UP ON YOU, ANYWAY!



# Toots and Casper

Registered U. S. Patent Office.

BEN PLUNKER'S HEART BEATS WITH JOY, FOR HIS FORMER SWEETHEART IS CALLING TO SEE HIM.



SEE, WHAT ABOUT THE BOSS' WIFE IF HE SHOULD FALL IN LOVE ALL OVER AGAIN WITH HIS EX-SWEETIE?



COME RIGHT IN, MRS. BRAMBELL!



BELINKA!

BENNIE!

ER-BELINKA, IS THAT Y-YOU?



SLIM WENT OUT SOMEPLACE AND I COULDN'T RESIST SNEAKING OVER TO SEE YOU FOR A MINUTE!



BELINKA, YOU'RE CRUSHING MY RIBS-- OUCH!



REMEMBER THE OLD DAYS WHEN WE USED TO SPOON AND YOU'D HOLD ME ON YOUR LAP? OH, BEN, I'VE NEVER FORGOTTEN



SLIM SURE HAS FED YOU WELL, ANYWAY, BELINKA!

I MUST GO NOW AND DON'T MENTION I WAS HERE-- SLIM IS FRIGHTFULLY JEALOUS OF YOU--



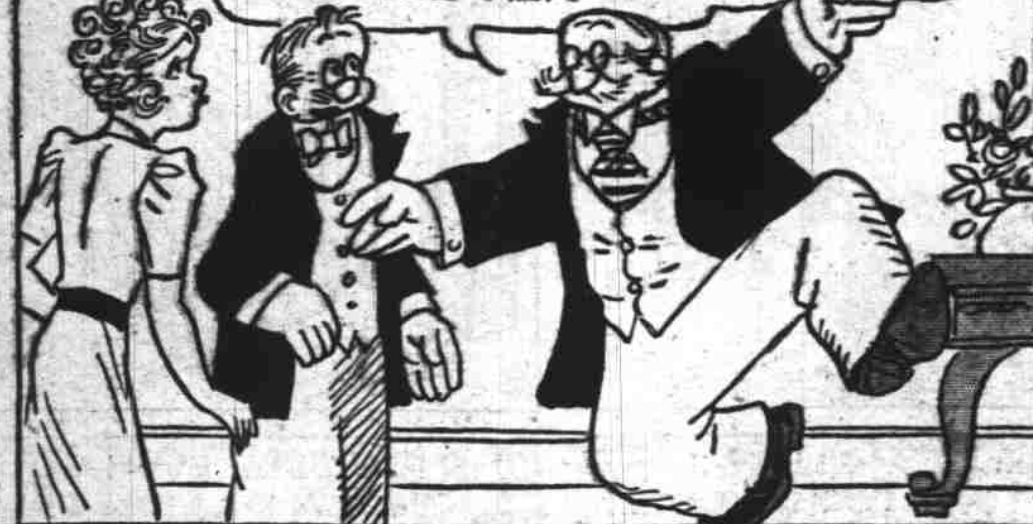
MY STARS! I NEVER SAW SUCH A CHANGE IN A PERSON-- SHE USED TO BE SUCH A LITTLE TRICK!



SHE HASN'T EXACTLY WASTED AWAY, HAS SHE, BOSS?



FOR 30 YEARS I'VE HATED SLIM BRAMBELL FOR STEALING HER FROM ME, BUT I DON'T HATE HIM ANY MORE-- NOW I'M GLAD HE STOLE HER--



BY JOVE! THAT REMINDS ME! THE DUEL! I'M TO FIGHT A DUEL WITH PISTOLS WITH SLIM AT NOON-- AND IT'S NOON NOW--



WHY FIGHT HIM IF YOU DON'T HATE HIM ANY MORE, BOSS?



EVEN SO, I CAN'T BACK OUT NOW AND HAVE HIM THINK I'M A COWARD! COME, CASPER!



HE'S LATE! THE SNAKE! I KNEW HE WOULDN'T SHOW UP!



SHHH-- FOOTSTEPS!



HERE COMES MR. PLUNKER!



AT LAST-- I'VE WAITED THIRTY YEARS TO PUT A BULLET THROUGH HIM!



AND NOW THE CLIMAX OF THE PLUNKER-BRAMBELL FEUD IS AT HAND!

CONTINUED NEXT WEEK!

JIMMY MURPHY

11-21