

# More Photos Depicting Conditions in Midwest Flood Areas



Flaming oil and gasoline which spread over flood waters in the industrial district of the city threatened to destroy Cincinnati, O. In this Soundphoto, transmitted over telephone wires, flames are

pictured as they engulfed oil tanks. Thirty-two large buildings and factories were destroyed, with fire losses estimated in excess of \$1,500,000.—International Illustrated News Soundphoto.



This excellent aerial view shows a desolated section of Louisville, Ky. To take the picture, the International Illustrated News cameraman flew low over the isolated area, while a steady downpour added to

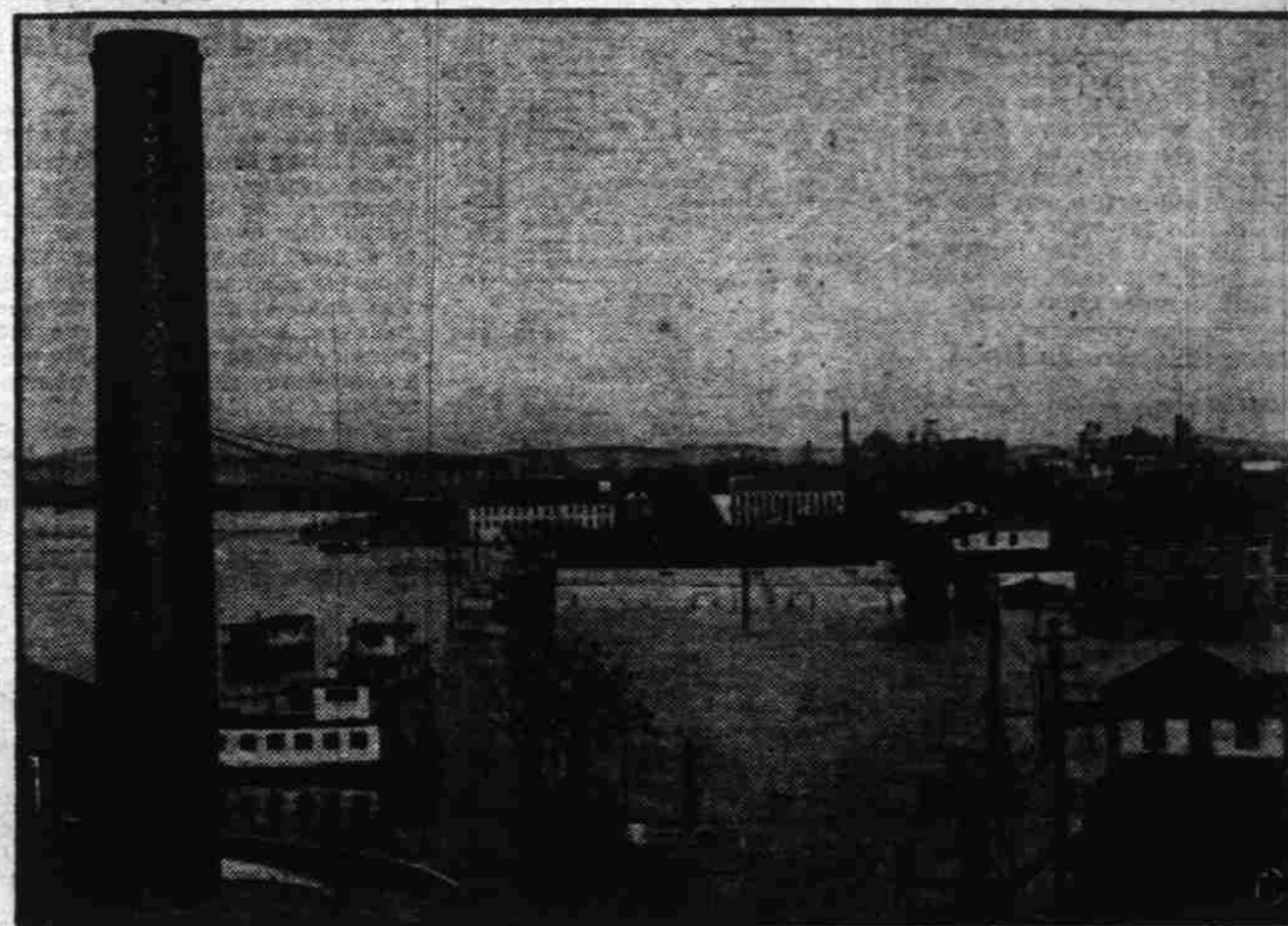
terror of the panic-stricken people whose situation was made more acute by loss of light and heat.



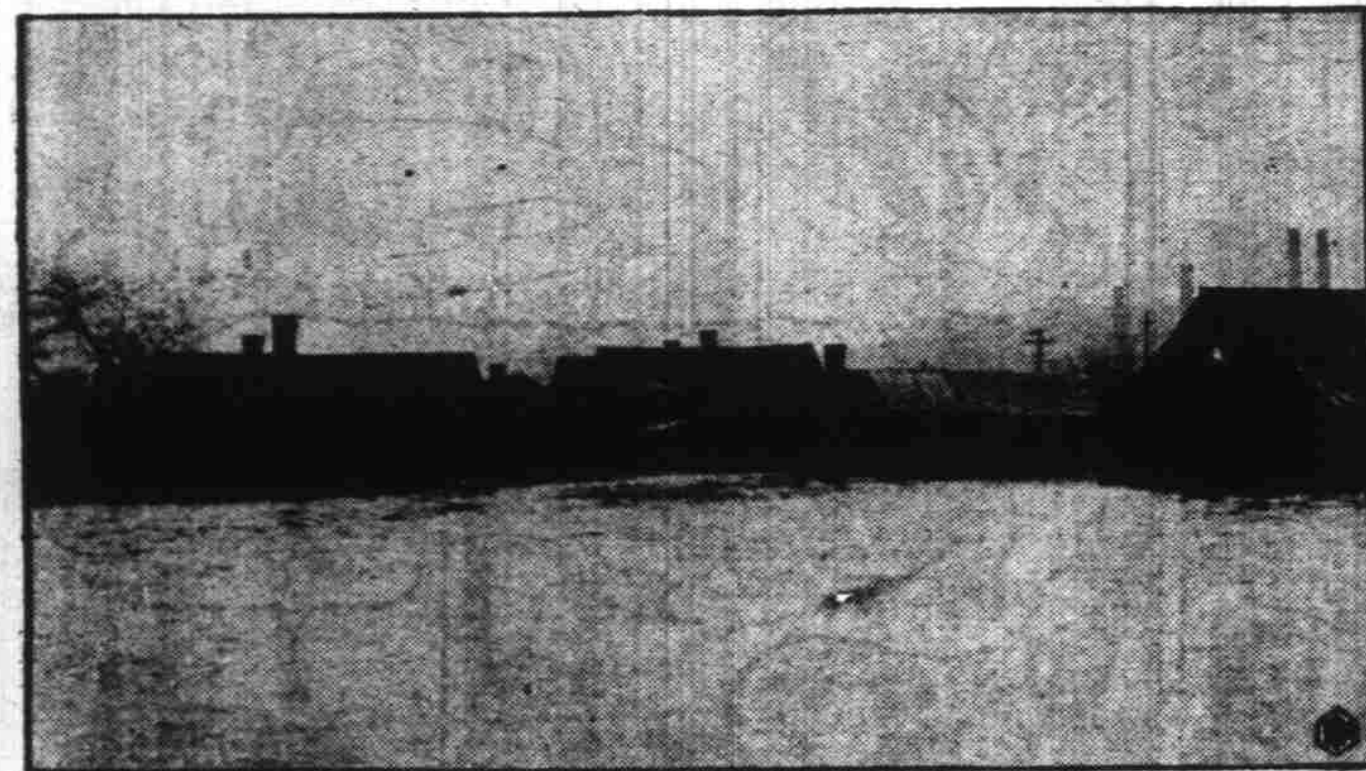
Fushing torrents, sweeping in from the Ohio river at Portsmouth, O., marooned this family. Later, they with many others were forced to top floors. Rescuers faced a huge task in trying to transport more than 40,000 persons to safety in Portsmouth alone.—Exclusive International Illustrated News Photo.



Cincinnati firemen rescue victim



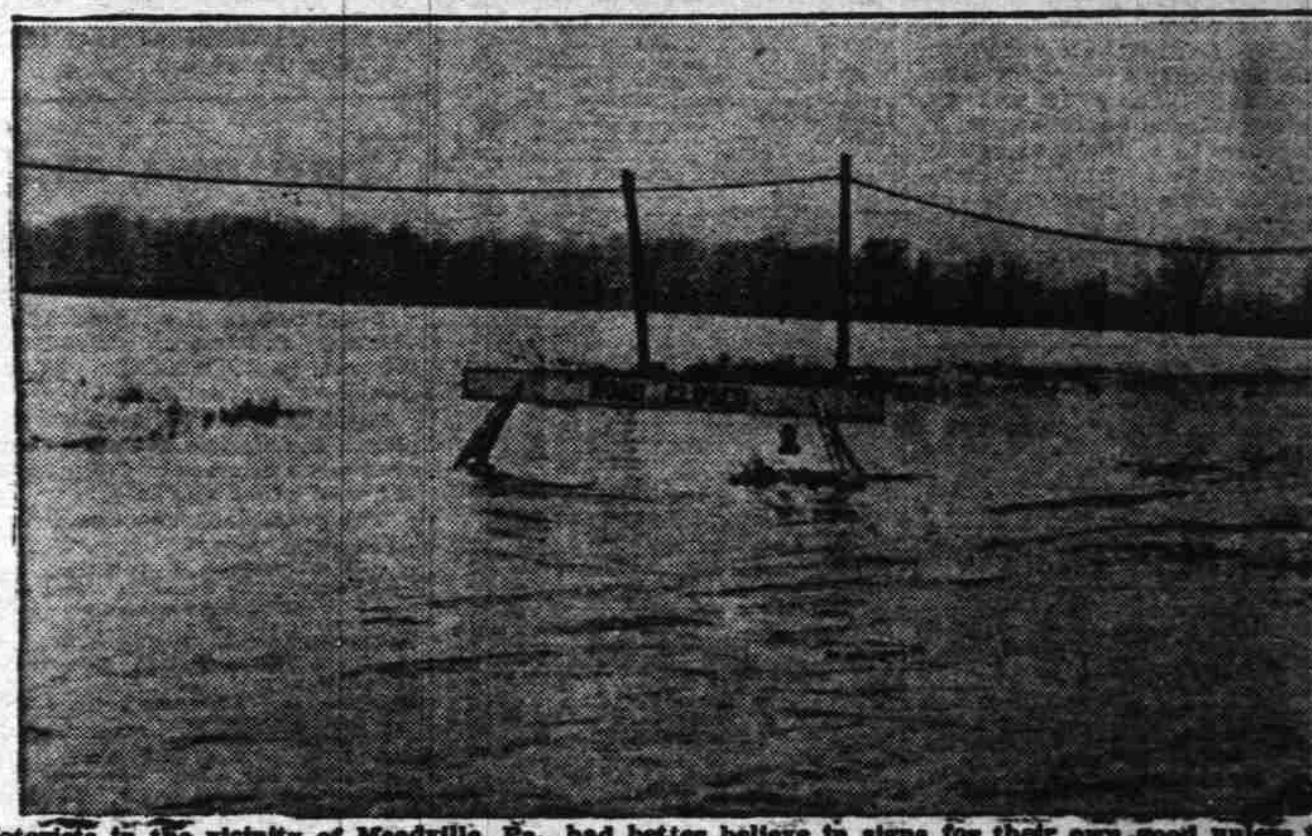
Business section of Cincinnati inundated



Scene at Nashville, Tenn.



Residents of Cincinnati found the problem of obtaining supplies a difficult one when flood waters marooned many families, necessitating delivery of food in boats.



Motorists in the vicinity of Meadville, Pa., had better believe in signs for their own good unless they want to put pontoons on their automobiles. This scene was typical of conditions after creeks and rivers had overflowed their banks.



Forced to flee for their lives before the threatening flood waters which swept down on McKees Rocks, Pa., driving them from their homes, these two little children and their mother, Mrs. Theresa Gray, dropped to sleep with sheer exhaustion on the floor of a relief station.



Refugees from the flood at Newport, Ky., strike the first bit of dry land they've seen since they were forced to evacuate their homes. Thousands have been similarly forced from their homes by unprecedented floods in nearby states.



Fed by torrential rains, swollen river waters forced railroads to suspend operations. This Soundphoto, transmitted to San Francisco over telephone wires, pictures the half-submerged Louisville, Ky., freight yards.—International Illustrated News Soundphoto.