

Rural Folk Have Their Inning When State Fair Time Returns

Marion County Exhibits Many Livestock and Poultry of Nearby District Will Make Big Showing

Marion county breeders of livestock and poultry and pigeon fanciers will be strong contenders for top honors in their respective divisions at the Diamond Jubilee Oregon state fair, opening Monday, entries received up to early the past week indicate.

In the cattle barns, exhibits will be made by Henry Zorn, Aurora; Lewis J. Johnson, Salem; Frank Durbin, Salem; Mrs. Mary G. Keene, Gervais; Mrs. J. W. McKinney, Turner. The famous Hurlburt Jerseys of Independence will be at the fair again, and other herds from this section will be represented as judging gets under way.

Salem exhibitors in the poultry and pigeon classifications will include Edwin B. Bishop, Merle Willmeseller, Charles K. Mills, Mrs. Mary E. Brooks, K. I. Jennings, F. L. Zielinski, Mrs. Maude Ramsden, Douglas McKay, Jr., Hollywood Loftis, L. R. Fisher, Amos Hineman and Raymond Page.

Many Draft Horses The show for draft horses will include the magnificent animals from the Stephen Hemshorn farm, Mt. Angel, G. H. Toelle farm, Stayton, Everett Service farm, Aumsville, and the John Stastney farm, Jefferson.

Marion county entries in the sheep and goat pens will include Millard Orey, Salem, Willard Aker, Brooks, Claude Steusloff, Salem, Stella Culver, Salem. The Eldon Riddell flocks from Monmouth will be represented.

Swine pens have been reserved for stock from the Hayes Labish Farms, Brooks, the J. M. Nichols & Son and Cass Nichols & Son pens, and Robert Zielinski pens, all of Salem; and from the F. C. Schermacher stock at Turner.

Other nearby entries have been made by Joe Rogers, Jr., Independence; Roy H. H. E. W. Gribble and E. W. Koch, all of Canby; and Herbert Willard, Dayton.

Morrison Chosen Racing Secretary

M. H. Morrison of Bay Meadows, Calif., will be presiding judge and race secretary at the race meet in connection with the Diamond Jubilee state fair.

Morrison, an experienced racing man, has occupied a similar position at the Gresham meets and at race meets all over the country.

Well-Known Dog to Perform At State Fair Here



Timber of Timber Del ranch, 100-pound German Shepherd trick dog, and his master, R. Porter Conger, Salem printer and rancher, who will appear during the morning free program at the state fair the coming week.

'Timber' Will Be At Oregon's Fair Unusually Intelligent Dog Will Be on Programs For All Visitors

State fair visitors who love dogs will have a special treat in the appearance of Timber, 100-pound German shepherd owned by R. Porter Conger, Salem.

Timber is an unusually large dog, beautiful and smart, and the dexterity with which he goes through numerous tricks at command of his master attests almost human intelligence. He has won many ribbons at dog shows and is the only dog known that rides and stunts on a surf board. It was this particular feat which drew the attention of Hollywood film producers and has put him in line for possible film work. He has made many appearances in coast towns, from Vancouver, B. C., to San Diego.

At certain commands he loves to do some particular stunt for his master, such as crawl, roll, die, drive the car, sit up, lie down or even take one of his pups for a walk. A deep impression is made when he places a slipper on his master's "grave."

Huge Pumpkins, Squash, Turnips and Potatoes Testify to Productiveness Of Oregon Farms; On Exhibit at Fair

PUMPKINS big enough for Peter, Peter, the pumpkin eater to keep a harem in and turnips, squash and potatoes of equally mammoth proportions as well as the more normal and useful vegetables will be seen in profusion in the agricultural exhibits at the Diamond Jubilee state fair this week.

Fifteen counties will have exhibits and most of them have already prepared their booths, lining them with the cream of their agricultural produce.

For the first time in several years Deschutes, Douglas and Clatsop counties will have exhibits with the rest of the counties on the main floor of the agricultural building. Other counties which will display their products include Columbia, Lane, Curry, Hood River, Tillamook, Polk, Wallowa, Yamhill, Linn, Coos, Benton and Marion.

The county exhibits will stretch entirely around the lower floor of the agricultural building. The center of the first floor will again

Timber's stunts will be a special feature on the morning free entertainment several days during the fair.

Conveniences for Public Numerous

Telephones, Postoffice on Grounds; Richardson To Head Police

Many conveniences for the thousands of people who will attend the Oregon state fair this week will be located on the grounds.

Public telephones will be found in many parts of the grounds and both major telegraph companies will have stations in operation.

The fairgrounds post office located in the agricultural building, will offer the full facilities of a large post office to the public. Many people are not cognizant of the fact that a regular post office is operated on the grounds and that a surprisingly large volume of mail is handled there.

Arthur E. Gibbard, assistant postmaster in the Salem office, has been in charge of the fairgrounds station for many years.

Has Own "Finest" Warren "Dick" Richardson will be in charge of the fairgrounds police. This year for the first time in many years policing of the grounds will be done by a private force instead of the Salem police. State police officers will aid in directing traffic.

Protection against fire damage will be given by the fairgrounds fire station, located near the cattle barns.

Rest rooms are located conveniently about the grounds and there will also be several parcel checking rooms.

An information booth will be located at the main office.

closed yesterday indicate visitors will see some of the finest show horses in the west. Fair Director Solon T. White said.

LODER BROS.

Invite You to Inspect Their Exhibit of

GRAHAM

Cars at the

Oregon State Fair

September 7-13, 1936

Our 8th Year as Your Graham Sales and Service for Marion and Polk Counties

HOME OF GOOD USED CARS

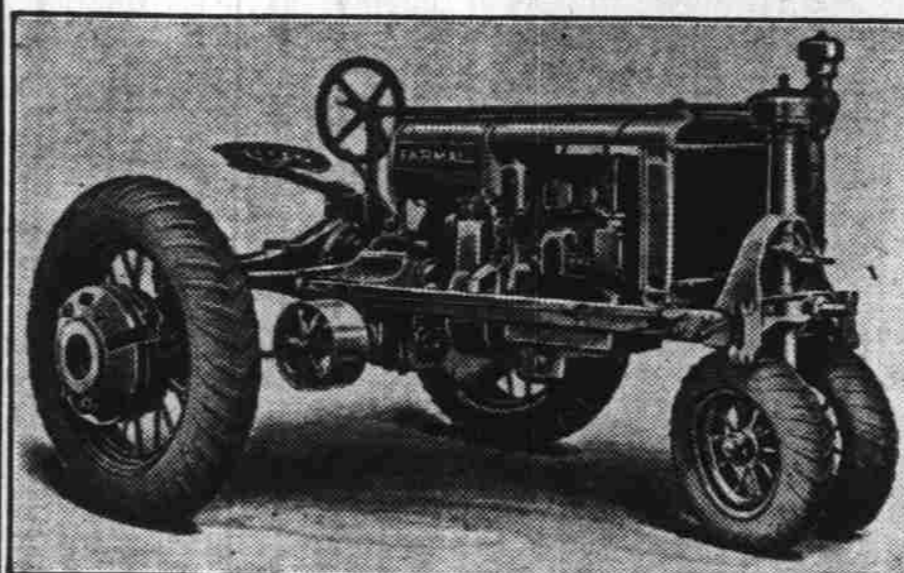
445 Center Street

Phone 6133

Salem, Oregon

MODERN FARMING with McCormick-Deering Implements

See Them on Display at the State Fair



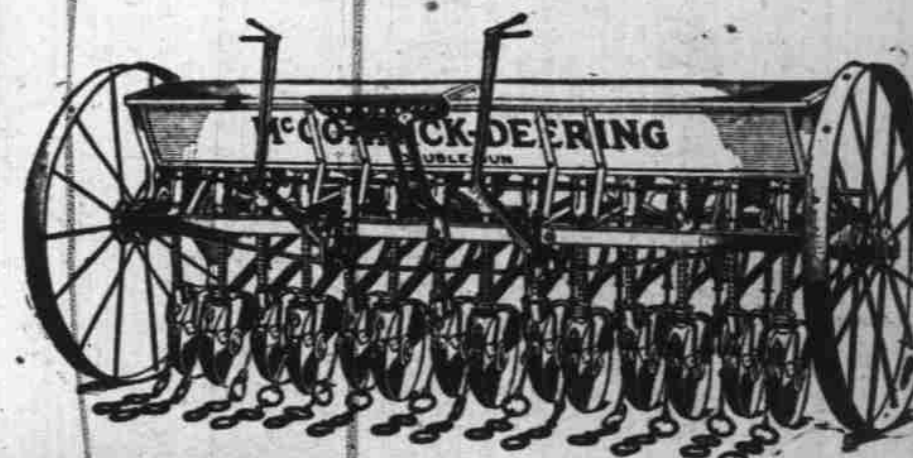
BE SURE AND SEE THE NEW T-20

TRAC TRACTOR

On Display at Our Store and State Fair

FARMALL TRACTORS

In Three Sizes For Your Every Need



For long hard mileage and economy spread over the years

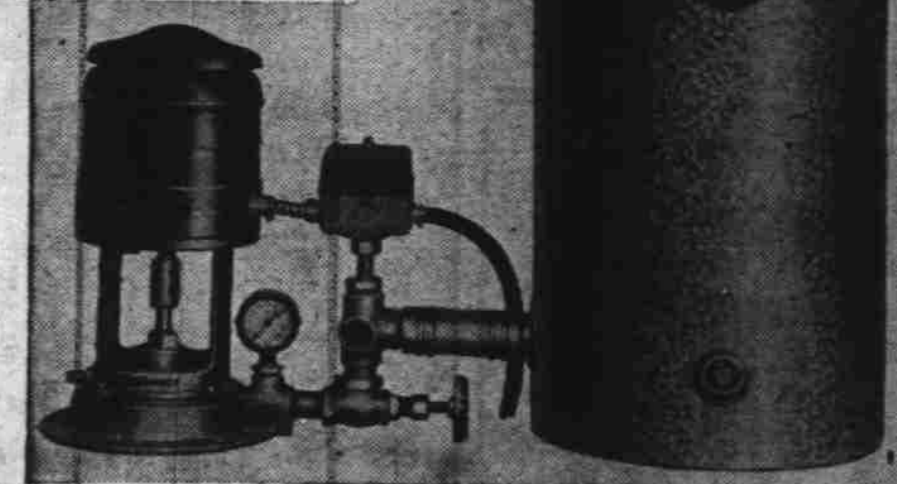


INTERNATIONAL TRUCKS

ADVANCE Automatic Water Systems

Running Water Under Pressure at the Turn of the Tap

Quiet — Economical — Dependable



JAMES H. MADEN

217 STATE STREET

PHONE 8590

SEE AND HEAR -- THE NEW 1937

Grunow Radios

AT OUR STORE -- AT THE STATE FAIR OR IN YOUR OWN HOME

They Are Unexcelled For Build, Workmanship, Quality, Tone and Reception

TODAY'S GREATEST RADIO VALUE at the NEW NATION-WIDE LOW PRICES

MODEL 520 Table Model, A.C.-D.C., 5 metal tubes \$24.95

MODEL 566 Table Model, 5 metal tubes, 8-inch speaker, violin shaped cabinet \$24.95

MODEL 555 Console, 5 metal tubes, all wave, 3-inch speaker \$39.95

MODEL 573 Console, 5 metal tubes, all wave, 6-inch black dial, automatic 2-speed tuning \$44.95

MODEL 573-W Console, all wave, antique white and gold finish, 5 metal tubes, 6-inch black dial, automatic 2-speed tuning \$46.95

There is no cost or obligation for a demonstration in your home -- we will appreciate this privilege.

Model 1191 11 tubes, electric eye, all wave, 6-inch black dial, 12-inch speaker on patented baffle board. \$74.95

Model 1291 12 tubes, console, all wave, automatic frequency control, TELE-DIAL, (dial like telephoning) patented violin shaped cabinet. \$104.95

You are cordially invited to visit our showrooms and inspect as well as test these new models. Our stock is complete and awaits your inspection.

Neon Signs - Plumbing Sheet Metal

NELSON BROS., INC.
Washers
Paints - Roofing
Refrigerators - Heating
355-361 CHEMEKETA • PHONE 4149

MODEL 641 Console, 6 glass tubes, all wave, 8-inch speaker \$49.95

MODEL 681 Console, 6 metal tubes, all wave, 10-inch speaker \$54.95

MODEL 631 Console, 6 metal tubes, all wave, 10-inch speaker, automatic 2-speed tuning \$59.95

MODEL 643 6 metal tubes, console, all wave, 10-inch speaker on patented baffle board \$59.95

We give terms and take trade-ins. Ask about our easy payment plan that will meet your convenience.