

Rally in Rails, Metals, Lifts Stock Average Classified Ads

Trade Volume Above Normal

60 Stocks Averaging Up at 62, New High; Dollar Is Still Weakening

NEW YORK, Feb. 15. (AP)—A hesitant stock market today was thumped into life by a last minute expansion in steel, rails and several of the non-ferrous metals. Higher prices, some of them the best in several years, snapped the volume for the short session to 1,373,795 shares, a bit more than the previous Saturday and substantially better than the hourly rate for Friday.

The Associated Press average of 60 stocks advanced 3 of a point to 62.0, a new high for the year, and industrials with a like rise and utilities with a boost of 1 of a point also went into virgin territory for the year. Rails, up 4 of a point, equalled the 1936 peak.

The dollar continued to weaken in relation to leading foreign exchanges, and the French franc closed 60 1/2 of a cent higher to 6.68 1/2, and the pound sterling ended 1/4 of a cent ahead at \$5.00 1/2.

The bond market held steady with government issues and railroad obligations generally preferred.

21,000 Bales of Hops Being Held

A total of 21,000 bales of 1935 Oregon hops are reported to be still in hop growers' hands. It was learned here yesterday that check-up of the holdover from last year.

The market ranged between six cents and nine cents. A total of 1500 bales were sold last week in Oregon. Of these, 400 bales of better grade hops sold at nine cents, 100 bales at six cents, and the remainder at prices ranging in between those two figures. A small amount of contracting was reported.

Sale of Domestic Wool Moderate During Week But Prices Are Firmer

BOSTON, Feb. 15. (AP)—(U. S. Dept. Agr.)—Sales of domestic wools in Boston during the past week were very moderate but prices were firm to slightly stronger. Most grades of territory wools had a little call, the bulk being on 58s, 60s, 1/2 blood and finer wools.

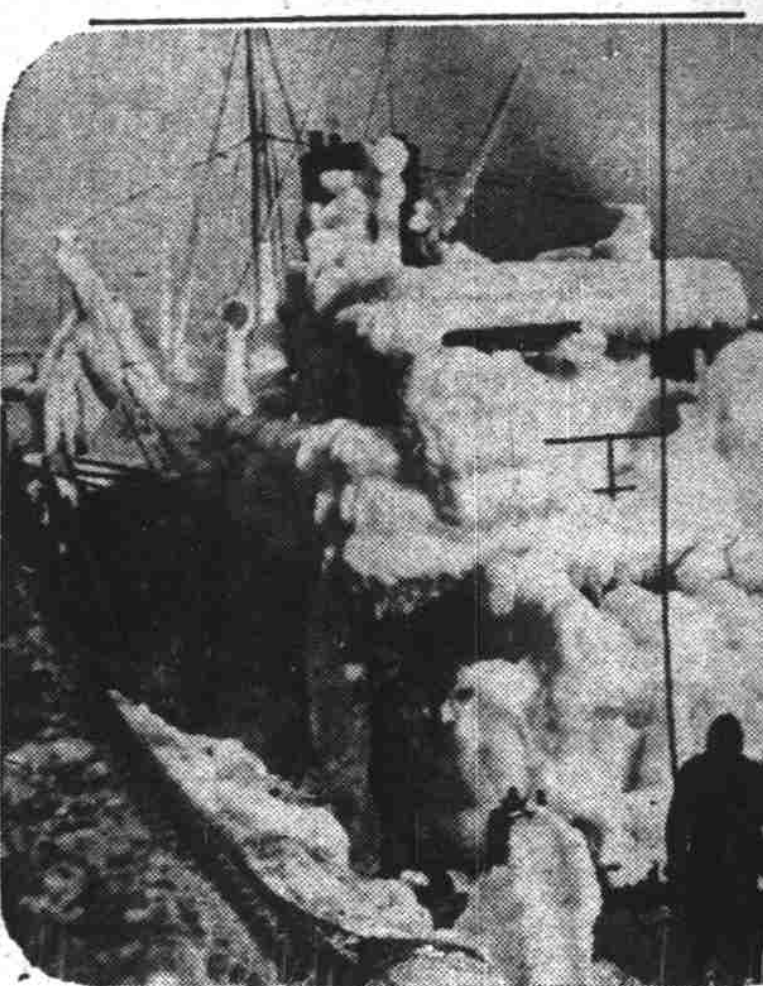
Fleeces were mostly quiet, and quotations unchanged but largely nominal on strictly combing Ohio and similar fleeces at 34-36 1/2 cents in the grease for 64s and finer, at 35-36 cents for 58s, 60s, 1/2 blood, and at 41-43 cents for 56s, 3/4 blood and 48s, 50s 1/4 blood.

Spot foreign wools were fairly active, firm at slightly higher.

Portland Gets Mission

PORTLAND, Ore., Feb. 15. (AP)—Dr. Samuel McCrea Cavert of New York, general secretary of the federal council of churches of Christ in America, said today Portland will be one of the 25 American cities to get the national preaching mission next fall, probably November 5 to November 8. Dr. E. Stanley Jones, widely known missionary, will head the group of 15 leading religious figures to come here.

Blizzard Paralyzes Navigation



Frigid blasts which whipped across most sections of United States lashed the Atlantic seaboard, marooning islanders, paralyzing shipping and creating such waterfront scenes as the above view of a Boston wharf where one of the fishing boats staggered into port, sheathed in ice.

Three Grades of Butter All Even

Quoted at 35c But Not on Open Market; Eggs Are High Due to Cold

PORTLAND, Feb. 15. (AP)—Three grades of cube butter were quoted at exactly the same price on the produce exchange for the special session. Advances were from 1/2 cent for extras up to 1 1/2 for first, or last grade. Three grades of cubes, extras, standard and prime first were quoted at 35c, a price that does not exist upon the open market for all quantities.

The advance of 1c in butterfat was not in line with recent advances for butter and premiums up to 1c, exist in the trade here. Both the local make and receipts showed a decrease for the week to date as compared with last week.

Sharply higher prices were forced for eggs on the exchange with rises of 2 to 3c dozen as a result of the extreme cold snap in the east. Sharply higher prices were quoted at some other coast markets.

Chickens Unchanged—Despite the fact that Vancouver is reported selling dressed fowls at less than the local trade can afford at prevailing live chicken prices, no change was made in buying values for the latter.

Held prices on dressed turkeys appeared the result chiefly of the low values as compared with other fowls. Local demand is fair but spotted. Receipts were moving chiefly into coolers. A trifle delayed Florida new potatoes were being generally distributed by the trade around 8c lb. The stock is of fancy quality with desirable sizes. Old potato market continued firm with the

Grain Sags in Spite of Cold

Actual Crop Development Awaited by Traders in Chicago Wheat Pit

CHICAGO, Feb. 15. (AP)—Notwithstanding that no relief from extreme cold is in sight, wheat values sagged at the last today, most traders being inclined to await crop developments.

Wheat closed easy at the same as yesterday's finish to 3c cent lower, May 93 1/4, corn 1/4-3/8 off, May 61 1/4, oats at 1/4 decline to an equal advance, and provisions unchanged to 5 cents down.

With sub-zero temperatures prevalent over Kansas and official crop damage reports poured in from the western part of the state, as well as from the Oklahoma panhandle and northern Texas.

A good deal of an offset, however, was that export business in Canadian wheat remained scanty. On the other hand, domestic primary receipts totaled hardly more than half as much as on the corresponding day last week. Bears emphasized that world imports, estimated to attain 540,000,000 bushels during the present crop year, may apparently fall short of even 500,000,000.

Lumber Output Is Lower, Orders Up

SEATTLE, Feb. 15. (AP)—Two hundred and one down and operating mills in Washington and Oregon produced 9,722,145 board feet of lumber in the week ended February 8, the West Coast Lumbermen's association reported today.

The production rate was 59.0 per cent of the industry's average weekly production for the years 1928 through 1929, the association said. The mills produced 102,128,252 board feet of lumber in the previous week. The production rate was 61.1 per cent.

New business reported for the week was 102,147,017 feet, with shipments of 87,358,174, compared with new business of the previous week of 100,695,425 feet and shipments of 110,645,119 feet.

Unfilled orders for last week were 552,849,188 board week, compared with unfilled orders of 540,658,500 feet of the previous week.

Valentine Motive Is Followed in Luncheon

RICKKEY, Feb. 15.—The Rickkey Sunshine club spent a delightful Friday afternoon at cards and sewing with Mrs. J. C. Simpson. A delicious luncheon carrying out the valentine motif was served to Mrs. C. H. McCullah, guest and the following members: Mrs. Floyd Beard, Mrs. Stuart Johns, Mrs. Frank Fulton, Mrs. Carol Courtner, Mrs. J. C. Courtner, Mrs. William Carothers, Mrs. Hazel Taylor, Mrs. Fred Miner, Mrs. Frank Smith, Mrs. Carl Shaver, Mrs. Roy Shaw, Mrs. L. E. Swift, and Mrs. J. C. Simpson, hostess.

2 Boilers Ready For New Plant at Mill City

MILL CITY, Feb. 15.—The two boilers, which are being brought from Clatskanie for the new mill, arrived by truck Thursday and will be placed at once, so building can be commenced.

Salem Markets

Grade B raw 4 per cent milk, Salem basic pool price \$1.82 per hundred.

Co-op butterfat price, F. O. B. Salem, 38c.

(Milk based on semi-monthly butterfat average.)

Distributor price \$2.10.

A grade butterfat—Delivered, 38c; B grade delivered, 36c.

A grade prints, 37 1/2c; B grade, 36 1/2c.

Prices paid to growers by Salem buyers (The prices below, supplied by a local grocer, are indicative of the daily market but are not guaranteed by The Statesman.)

Calif. fresh dates, lb.	13
Pineapple, Hawaiian, ea.	35 1/2
Oranges, fancy	2 1/2 to 3.50
Choice	2.50 to 2.85
Hannans, lb. on stalk	9c
Hands	5.00 to .67
Lemons	4.00 to 6.25
Choice	5.00 to 5.50
Limes, fresh, doz.	1.00
Grapefruit, doz.	2.25
Arizona	2.00 to 2.50
Texas	2.75 to 3.25
Apples, doz.	40 to 75
Spitz, bushel	30 to 65

VEGETABLES (Buying Price)	
Rhubarb, household	90, 1.05 1.15
Carrots, 100 lb. top	1.15
Lettuce, Calif. crate	4.25
Parsnips, lb.	7.75
Choice	2.00 to 2.25
Danish squash doz.	1.75
Onions, Labish, cwt.	1.25
Artichokes, box	1.45
Yakima marbled squash, lb.	.08
Gabbage, Oregon, cwt.	1.75 to 2.50
Carrots, local, doz.	2.50
Celery hearts, doz.	1.50
Green chives, lb.	1.80
Potatoes, No. 1, local	1.80
Potatoes, No. 2, local	1.15
Spinach, local, orange crate	3.00
Texas spinach, hamper	1.65
Chinese cabbage, crate	1.40
Ethiopian cabbage, crate	2.50 to 3.00
Turkies, dozen, local	35
Celery, Utah variety	2.25 to 2.75
Celery, China variety	2.75 to 3.50
Artichokes, box	1.45
Butterbeans, cwt.	1.35
Green onions, dozen	20

Woolens, lb.	10 to 14
Woolens, lb.	14 to 18

Woolens (Buying Price)	
Clusters, 1935, lb.	10
Fulgies, 1935, top, lb.	18 1/2

Wool and Mohair (Buying Price)	
Mohair	29
Medium wool	29
Coarse wool	27

Eggs and Poultry (Buying Price of Addresses)	
Extras	19
Medium extras	17
Medium	16
Medium standard	16

Medicine (Andreson & Son Buying Price)	
Heavy hens, 4 or over	16
Heavy hens, 4 or over	16
Colored mediums, lb.	14
Colored sprayers, lb.	12
Light, lb.	11
Stags, lb.	10
Medicine, lb.	10
Delivered fry, lb.	17
White Leghorns, fry, lb.	16

LIVESTOCK (Buying Price)	
Live Poultry, No. 1 stock	16
Heavy hens, under 4 lbs.	16
Medium colored hens, lb.	13
Leghorn hens, over 3 1/2 lbs.	13
Colborn hens, light	13
Colored sprayers, lb.	16
Old Roosters, lb.	10
Relicts	07
Eggs—Candled and graded—	
Large standards	17
Medium extras	16
Medium standard	14
Undergrade and pullets	14

TURKEY MARKET	
Fancy young turkeys, lb.	20
Fancy young toms, lb.	20

LIVESTOCK (Buying Price)	
Lambs	9.00
Ewes, lb.	03 to .04
Yearling, lb.	05 to .06
150-160 lb., top	10.00 to 10.50
160-170 lb., top	11.00 to 11.10
210-250 lb., top	10.50 to 10.75
Sows	8.00 to 8.50
Steers	5.00 to 6.00
Dairy type cows	4.00 to 5.00
Bulls	4.50 to 5.00
Veal, top	9.00
Veal, top	9.00
Dressed veal, lb.	13 1/2
Dressed pork, lb.	14

GRAIN AND HAY	
Wheat, western red	77 1/2
White, do.	78
Barley, brewing, ton	23.00
Feed barley, ton	21.00
Oats, milling, ton	22.50
Oats, feed, ton	22.50
Hay buying prices—	
Alfalfa, 1st quality	13.00
Clover hay, 1st quality	11.00
Oats and vetch, ton	11.00

Stopping Wobbly Car Rough Task; McNabb in Jail

Early yesterday morning Newton A. McNabb was driving his car out South Commercial street. State police noticed the auto was wobbling. In attempting to stop McNabb they did not count on his inability to stop his car as the engine demanded. Result was a violent bump to the car of the arresting officer.

Late yesterday McNabb was fully sober. In the interval he had been brought before Justice of the Peace Hayden, had pleaded guilty to driving while intoxicated and had been sentenced to spend 30 days in the county jail and to pay a \$100 fine.

He began his jail sentence last night.

BUY DOG LICENSES NOW

Dog owners are again notified that an act of the legislature requires that all dogs over eight months old must be licensed before March 1st to avoid payment of the \$1.00 penalty for delinquency. A license on a male or spayed female dog is now \$1.00; after March 1st this must be increased to \$2.00. Until March 1st female dogs can be licensed for \$2.00; after that the license fee must be increased to \$3.00. Dogs becoming eight months old after March 1st may be licensed without penalty at any time before they become eight months old.

Call letters with money for licenses can be located for Clerk, Salem, Oregon. Enclose the proper fee and state the breed and sex of the dog and your name and address.

Stocks and Bonds

February 15 STOCK AVERAGES (Compiled by The Associated Press)

Today	79.9	87.3	90.8	82.0
10 days ago	79.9	87.3	90.8	82.0
1 month ago	75.3	81.9	86.8	77.9
Year ago	54.4	22.7	32.6	38.8
1935 high	79.9	87.3	90.8	82.0
1935 low	32.4	40.2	45.0	32.7
1934 high	76.3	83.2	87.1	76.1
1934 low	49.5	58.5	61.6	44.8

BOND AVERAGES

Today	93.9	104.1	102.3	70.9
10 days ago	93.9	104.1	102.3	70.9
1 month ago	90.4	102.4	101.5	70.7
Year ago	85.6	94.4	88.5	69.9
1935 high	93.9	104.1	102.3	70.9
1935 low	87.8	102.2	98.3	69.6
1934 high	87.8	102.2	98.3	70.4
1934 low	76.4	92.2	94.5	65.3

Cattle and Sheep Losses Are Small

Oregon Range Reported in Good Condition, Snow Is Not Prevalent

The harshness of the recent cold spell, always a thing dreaded by stockmen, was somewhat alleviated in the Willamette valley by the facts that winter ranges were in good condition, there was no snow except in the high areas and ample feed supplies were at hand. Cattle and sheep losses were reported to be small in the valley. Breeding ewes were in fine shape and early lambs were growing well. Some No. 1 alfalfa had been shipped into the valley for dairy feed.

Despite severe weather during January and the first two weeks of February, the condition of cattle generally throughout the country declined only slightly. This was largely a reflection of the good condition in which the animals entered the winter and the ample feed supplies in most areas.

The volume of marketing has been light. While it is yet too early to draw any definite conclusions regarding calf crop prospects, the good condition of breeding herds and ample supplies indicate that calves should arrive in sturdy condition and that the percentage calf crop of 1936 should be average or better.

Early arrivals in some states already indicate this as being a likely development. Cattle and calves in feed lots have made good gains. Stock water is ample in nearly all sections except in some of the northern areas where low temperatures have frozen over drinking sources. In general, the financial condition of the cattle industry is reported the best in several years.

Undergoes Operation

PIONEER, Feb. 15.—Mrs. Darel Bird underwent a tonsil operation at the Dallas hospital Tuesday. She was taken to the Roy Bird home Wednesday and Mrs. Bird is caring for her. She is getting along nicely now.

IN THE DISTRICT COURT OF THE UNITED STATES FOR THE DISTRICT OF OREGON

IN THE MATTER OF Marie Warwick, Bankrupt.

To the creditors of Marie Warwick, of Salem, in the County of Marion and District aforesaid, a bankrupt.

NOTICE IS HEREBY GIVEN that on the 17th day of January, 1936, the said Marie Warwick was duly adjudicated bankrupt and that the first meeting of her creditors will be held at Room 301 in the U. S. National Bank Building, in the City of Salem, Oregon, on the 27th day of February, 1936, at 2:00 o'clock in the afternoon, at which time the said creditors may attend, prove their claims, appoint a trustee, examine the bankrupt and transact such other business as may properly come before said meeting.

WILLARD L. MARKS Referee in Bankruptcy. F. 16

IN THE DISTRICT COURT OF THE UNITED STATES FOR THE DISTRICT OF OREGON

IN THE MATTER OF John Kohlhepp, Bankrupt.

To the creditors of John Kohlhepp, of Salem, in the County of Marion and District aforesaid, a bankrupt.

NOTICE IS HEREBY GIVEN that on the 3rd day of February, 1936, the said John Kohlhepp was duly adjudicated bankrupt and that the first meeting of his creditors will be held at Room 301 in the U. S. National Bank Building, in the City of Salem, Oregon, on the 27th day of February, 1936, at 2:30 o'clock in the afternoon, at which time the said creditors may attend, prove their claims, appoint a trustee, examine the bankrupt and transact such other business as may properly come before said meeting.

WILLARD L. MARKS Referee in Bankruptcy. F. 16

Gardeners' and Ranchers' Mart

PORTLAND, Ore., Feb. 15. (AP)—Extreme cold weather led to marked scarcity of local produce on Saturday morning's gardeners' and ranchers' market. Only apples were well stocked. Parsnips changed from 75 cents and 90 cents to \$1.00 and \$1.50 per lug.

Spinach—Per box, \$1.25. Carrots—Per dozen bunches, 45-50c. Beets—Lug, 40-50c. Tomatoes—U. S. No. 1, 100 lb. sack, \$1.60-1.75; No. 2, \$1.10-1.20. Green onions—50c. Cabbage—Pound, 8-9c; red cabbage, 4c. Cauliflower—Crate, local, 81c. Radishes—Per dozen bunches, 35c. Celery hearts—Per dozen bunches, \$1.75. Field packed, ripe, crate, \$2.25; dozen bunches, \$1.10-1.20. California, \$1.25. Spitzberg, \$1; fancy Dutch, \$1.25. Parsley—Per dozen bunches, 30-45c. Lettuce—Imperial, 5c, doz., \$7.75-8. Cabbage—Oregon, No. 10-16c. Turnips—New crop, dozen bunches, 60c. Squash—Hubbard, Bohemian, Marblehead, 3 1/2c. Cucumbers—Hothouse, doz., \$1.35-2. Pumpkins—California, \$1.85. Rutabagas—100 lb. doz., \$2. Green onions—50c. Celery—Pound, 8-9c; red cabbage, 4c. Cauliflower—Crate, local, 81c. Radishes—Per dozen bunches, 35c. Celery hearts—Per dozen bunches, \$1.75. Field packed, ripe, crate, \$2.25; dozen bunches, \$1.10-1.20. California, \$1.25. Spitzberg, \$1; fancy Dutch, \$1.25. Parsley—Per dozen bunches, 30-45c. Lettuce—Imperial, 5c, doz., \$7.75-8. Cabbage—Oregon, No. 10-16c. Turnips—New crop, dozen bunches, 60c. Squash—Hubbard, Bohemian, Marblehead, 3 1/2c. Cucumbers—Hothouse, doz., \$1.35-2. Pumpkins—California, \$1.85. Rutabagas—100 lb. doz., \$2. Green onions—50c. Celery—Pound, 8-9c; red cabbage, 4c. Cauliflower—Crate, local, 81c. Radishes—Per dozen bunches, 35c. Celery hearts—Per dozen bunches, \$1.75. Field packed, ripe, crate, \$2.25; dozen bunches, \$1.10-1.20. California, \$1.25. Spitzberg, \$1; fancy Dutch, \$1.25. Parsley—Per dozen bunches, 30-45c. Lettuce—Imperial, 5c, doz., \$7.75-8. Cabbage—Oregon, No. 10-16c. Turnips—New crop, dozen bunches, 60c. Squash—Hubbard, Bohemian, Marblehead, 3 1/2c. Cucumbers—Hothouse, doz., \$1.35-2. Pumpkins—California, \$1.85. Rutabagas—100 lb. doz., \$2. Green onions—50c. Celery—Pound, 8-9c; red cabbage, 4c. Cauliflower—Crate, local, 81c. Radishes—Per dozen bunches, 35c. Celery hearts—Per dozen bunches, \$1.75. Field packed, ripe, crate, \$2.25; dozen bunches, \$1.10-1.20. California, \$1.25. Spitzberg, \$1; fancy Dutch, \$1.25. Parsley—Per dozen bunches, 30-45c. Lettuce—Imperial, 5c, doz., \$7.75-8. Cabbage—Oregon, No. 10-16c. Turnips—New crop, dozen bunches, 60c. Squash—Hubbard, Bohemian, Marblehead, 3 1/2c. Cucumbers—Hothouse, doz., \$1.35-2. Pumpkins—California, \$1.85. Rutabagas—100 lb. doz., \$2. Green onions—50c. Celery—Pound, 8-9c; red cabbage, 4c. Cauliflower—Crate, local, 81c. Radishes—Per dozen bunches, 35c. Celery hearts—Per dozen bunches, \$1.75. Field packed, ripe, crate, \$2.25; dozen bunches, \$1.10-1.20. California, \$1.25. Spitzberg, \$1; fancy Dutch, \$1.25. Parsley—Per dozen bunches, 30-45c. Lettuce—Imperial, 5c, doz., \$7.75-8. Cabbage—Oregon, No. 10-16c. Turnips—New crop, dozen bunches, 60c. Squash—Hubbard, Bohemian, Marblehead, 3 1/2c. Cucumbers—Hothouse, doz., \$1.35-2. Pumpkins—California, \$1.85. Rutabagas—100 lb. doz., \$2. Green onions—50c. Celery—Pound, 8-9c; red cabbage, 4c. Cauliflower—Crate, local, 81c. Radishes—Per dozen bunches, 35c. Celery hearts—Per dozen bunches, \$1.75. Field packed, ripe, crate, \$2.25; dozen bunches, \$1.10-1.20. California, \$1.25. Spitzberg, \$1; fancy Dutch, \$1.25. Parsley—Per dozen bunches, 30-45c. Lettuce—Imperial, 5c, doz., \$7.75-8. Cabbage—Oregon, No. 10-16c. Turnips—New crop, dozen bunches, 60c. Squash—Hubbard, Bohemian, Marblehead, 3 1/2c. Cucumbers—Hothouse, doz., \$1.35-2. Pumpkins—California, \$1.85. Rutabagas—100 lb. doz., \$2. Green onions—50c. Celery—Pound, 8-9c; red cabbage, 4c. Cauliflower—Crate, local, 81c. Radishes—Per dozen bunches, 35c. Celery hearts—Per dozen bunches, \$1.75. Field packed, ripe, crate, \$2.25; dozen bunches, \$1.10-1.20. California, \$1.25. Spitzberg, \$1; fancy Dutch, \$1.25. Parsley—Per dozen bunches, 30-45c. Lettuce—Imperial, 5c, doz., \$7.75-8. Cabbage—Oregon, No. 10-16c. Turnips—New crop, dozen bunches, 60c. Squash—Hubbard, Bohemian, Marblehead, 3 1/2c. Cucumbers—Hothouse, doz., \$1.35-2. Pumpkins—California, \$1.85. Rutabagas—100 lb. doz., \$2. Green onions—50c. Celery—Pound, 8-9c; red cabbage, 4c. Cauliflower—Crate, local, 81c. Radishes—Per dozen bunches, 35c. Celery hearts—Per dozen bunches, \$1.75. Field packed, ripe, crate, \$2.25; dozen bunches, \$1.10-1.20. California, \$1.25. Spitzberg, \$1; fancy Dutch, \$1.25. Parsley—Per dozen bunches, 30-45c. Lettuce—Imperial, 5c, doz., \$7.75-8. Cabbage—Oregon, No. 10-16c. Turnips—New crop, dozen bunches, 60c. Squash—Hubbard, Bohemian, Marblehead, 3 1/2c. Cucumbers—Hothouse, doz., \$1.35-2. Pumpkins—California, \$1.85. Rutabagas—100 lb. doz., \$2. Green onions—50c. Celery—Pound, 8-9c; red cabbage, 4c. Cauliflower—Crate, local, 81c. Radishes—Per dozen bunches, 35c. Celery hearts—Per dozen bunches, \$1.75. Field packed, ripe, crate, \$2.25; dozen bunches, \$1.10-1.20. California, \$1.25. Spitzberg, \$1; fancy Dutch, \$1.25. Parsley—Per dozen bunches, 30-45c. Lettuce—Imperial, 5c, doz., \$7.75-8. Cabbage—Oregon, No. 10-16c. Turnips—New crop, dozen bunches, 60c. Squash—Hubbard, Bohemian, Marblehead, 3 1/2c. Cucumbers—Hothouse, doz., \$1.35-2. Pumpkins—California, \$1.85. Rutabagas—100 lb. doz., \$2. Green onions—50c. Celery—Pound, 8-9c; red cabbage, 4c. Cauliflower—Crate, local, 81c. Radishes—Per dozen bunches, 35c. Celery hearts—Per dozen bunches, \$1.75. Field packed, ripe, crate, \$2.2