

# LUMBER CODE MAN CALLED TO CHICAGO

STAYTON, April 20. — Grant Murphy, local lumberman and member of the lumber code authority board, has received notice to attend a meeting in Chicago, April 27. He expects to leave Tuesday.

Various reports pertaining to the proposed lumber code will be read. The main feature of business is the discussion and status of the lumber code authority in the immediate future and after new legislation is enacted. There are only four board members in the West Coast division, all of whom plan to make the trip to Chicago.

## Sage of Salem

(Continued from page 4)

I have received this week a letter from a charming woman, long a dweller in southern California, who has read certain references to former-day Iowa people and things which have appeared in this column. She says "I love all the 'back home' things you write about. It is still home to me back there where the tall corn grows, dust storms and all. There are few places that do not have a bit of 'unusual weather' at times. 'Mountain Quail' was before my time, but I remember her just the same, and"—well, such was the spirit and tone of the message, and it was very good.

Also during the week I have had a pleasant visit from a young woman with a greeting from an elder sister, now in Chicago, whose husband I once knew as the publisher of an Iowa weekly newspaper. I had supposed these people had forgotten me years ago. That they had not done so may be accounted for perhaps by the natural impulse of us all to cling to past associations—to a time when our worlds were younger and congenial hope burned bright and strong and the seams of the garment of life chafed not. I am grateful for remembrance.

And also a young man whose former home was in Maine has dropped in to suggest the formation of a New England society in Salem. Such a society might serve a good purpose in mitigating the "old home" pang suffered by transplanted New Englanders. The idea is doubtless a very good one.

However, the fact remains that few if any residents of Salem or of the Willamette valley or of the Pacific coast ever return permanently to their former homes in the east or south or midwest once they have become settled here. I have been asked what I consider to be my "home town", and I have thought the matter over. I doubt whether any other town would at this period in my life seem so much like home to me as Salem feels. And that is the answer let the threads of memory reach where they may.

A gold nugget worth \$3,000 was found once in the Toxaway river near Highlands, N. C.



## WHAT IS HOME WITHOUT A GARDEN?

By LILLIE L. MADSEN  
AND from over at Ocean Lake comes an inquiry as to how dahlias will grow there. I have never seen finer dahlias than those growing along the coast. Of course, they should be planted against the beach cottage or back of a wind break so that the plants are not broken before they bloom. The moist salt air seems to add to the size and intensity of the coloring of the dahlias blossoms. You may have to add some humus to your garden there, or perhaps a little complete plant food. But some of the coast gardeners tell me they add nothing to the sandy soil the first year. Petunias, phlox and cosmos also do noticeably well at the seashore.

In answer to the question as to when primroses should be divided, I'll repeat that this should be done as soon as they are through blooming. Most of the English primroses divide nicely. Primroses may be set out anytime. They transplant quite well even when they are in bloom if a little care is taken not to shake off all the dirt about the roots. Primroses are certainly "in" this year, aren't they? The other day while I was rambling about Portland gardens, I noticed primroses in almost every single garden. English primroses, contrary to the opinions of some, do grow nicely from seed. I have grown many varieties that way. A brilliant orange primrose which has been the envy of my friends this spring, was grown from seed and bloomed the second year. From a package of Sutton's blue primroses we secured three lovely shades of blue, and from the yellow package came the palest yellow to the brilliant orange. Evidently last year I failed to pick off all the seed pods, which was really my intention, and the other day I discovered several tiny seedling primroses along the large plants.

Starting Primroses  
In starting primroses from seed, I have found that boxes about six inches deep and 18 inches square filled the bill for me. I filled the first three inches of the box with good garden soil, placed an inch of sand on top of this and pressed the seeds down in little rows. Then I placed a window glass over the top of the box and a piece of burlap over the glass. The glass should not fit the box so perfectly that all air circulation is shut out. The sand must be kept moist at all times. Sometimes the primrose seed germinates quite rapidly and at other times it is very slow about it. Why, I'm not sure. Perhaps the age of the seed has something to do with it.

When the little plants appear, I removed the burlap but kept the box in a shady place. Care must be taken to give the plants sufficient air circulation to prevent dampening off and yet they must

not be permitted to dry out. Fight Against Slugs  
Constant watch must be kept for slugs as they will, if at all possible, crawl over the edge of the box and do away with the little plants. However, slugs dislike sand and become discouraged if they find a stretch of sand separates them from the plants.

If the plants are large enough to handle by fall, they may be set out in their permanent location. And they should be large enough, if the seed is planted soon. But if they are not, they may be left growing in the seed box until early spring. If you are setting out primroses this spring, be sure to give them a place that has good drainage. Drainage is very important to the common primrose. Keep the ground loose about the plants. I find a ground cover of peat moss is quite beneficial if the drainage is good.

Advice on Mums  
It is getting to be the time of the year to divide your chrysanthemums. If you are placing them in your perennial border, dig the places deep, mix in some plant food and after the plants are set in, mulch them with sand or peat moss. I have found it a good idea to place some slug bait about the mums. Sometimes cut worms can even be lured to nibble of the ball, and cut worms are almost enemy No. 1 of chrysanthemums. If you

are setting out new ones, don't forget to ask about the early blooming sorts. We may not have an autumn like last year all the time. Last year I picked my last bouquet of mums for the season in January. Larkspurs do not like transplanting and should be sown in their permanent location in the beginning. They grow easily from seed and it is but a short while until they bloom. Their feathery green growth is lovely even when they are not in bloom.

## SERVICE STATION TOWN HALL SITE

MT. ANGEL, April 20.—One of the finest improvements to be made in Mt. Angel will be the construction of a new super-service station and garage by Louis A. LeDoux on the grounds of the old LeDoux service garage.

Employees of Mr. LeDoux, together with numerous SERRA workers of the city, completed the destruction of the old building this week to make room for a modern tile service station. The city is aiding in this work in return for a strip of property which is needed to straighten Railroad street and to eliminate the hazardous corner where Main and Railroad streets join. The destroyed building had a varied and interesting history, having first been used as the town's first community hall long before the turn of the century and serving in turn as store, meat market, residence, furniture store and finally garage.

## Safety Valve

### AN EASER THOUGHT

On Easter morn the church is filled With folks from far and near. Why have they come in such great throngs? What motives brought them here? Came they to worship Him, who on The first great Easter morn Arose the victor over death Or came they Him to scorn? Perhaps some folks are out today To display new attire— They get no inspiration from The singing of the choir. And here are some who never come To church but once a year— Why have they met with us today? What motives brought them here? If they believe that Christ arose And liveth yet today, Why do they not each Sabbath morn To worship wend their way? If you are here who came to seek Forgiveness for sin, It was for you that Jesus died; For you He rose again. Just trust Him—take Him at His word And joy will fill your heart. Just come to Him with all your sin And from Him ne'er depart. Oh, may we all who've met today And truly worship at His feet, Who taught us how to live, Helena Christensen Gilham, Salem, Ore.

### WARNS AGAINST FALL

To the Editor of the Statesman: No doubt the scoffing portion of our population has been given a big boost in the defalcation of a certain minister who was overtaken at Tlalana, Mexico.

Let none be discouraged or scoffing at this episode for it only proves the breed—as once a man bought eggs for pure bred white chickens and when one or two hatched out black, and the owner was disappointed, he was informed: "That only proves the breed." Without the genuine, there could be no counterfeit; without the true there could be no false.

Moreover, it proves the word of God. Christ said: "The Kingdom of Heaven is like unto a net, that was cast into the sea, and gathered every kind"; Matthew 13:47. The gospel net does not catch one class of fish only. Also there would be "woives in sheep's clothing," and "tares among the wheat." We cannot be disheartened at the fulfillment of prophecy, neither should they scoff.

But let us hear the conclusion of the matter. How does it end and how will it be with us? Speaking of the net, Jesus continued: "Which when it was full, they drew to shore and sat down, and gathered the good into vessels, but cast the bad away." And as

The meek and lowly Savior urges us to let him, who is without sin, be the one to cast the first stone! If an educated man and a deep thinker can turn squarely around in his tracks and begin anew, let every man, woman and child in Oregon help Reverend Richardson Tebbets to make a new start.

FLORENCE MATHES, Salem R. 2, Box 268.

### WILL STARTS CUTTING

MEHAMA, April 20.—The Parry Lumber company started sawing yesterday after moving from the North Fork to about two miles south of Jordan. They expect to show about 20,000 feet of lumber a day.

Mrs. Mae Smith of North Bend is visiting at the W. T. Hughes home. Mrs. Smith is a sister of Mr. Hughes.

### Butteville Loses To Hazel Green

HAZEL GREEN, April 20.—The school ball team won the last league game Thursday afternoon at Butteville. The score was 7 to 4 in favor of Hazel Green. A large delegation attended the game. Arthur Clemens was umpire.

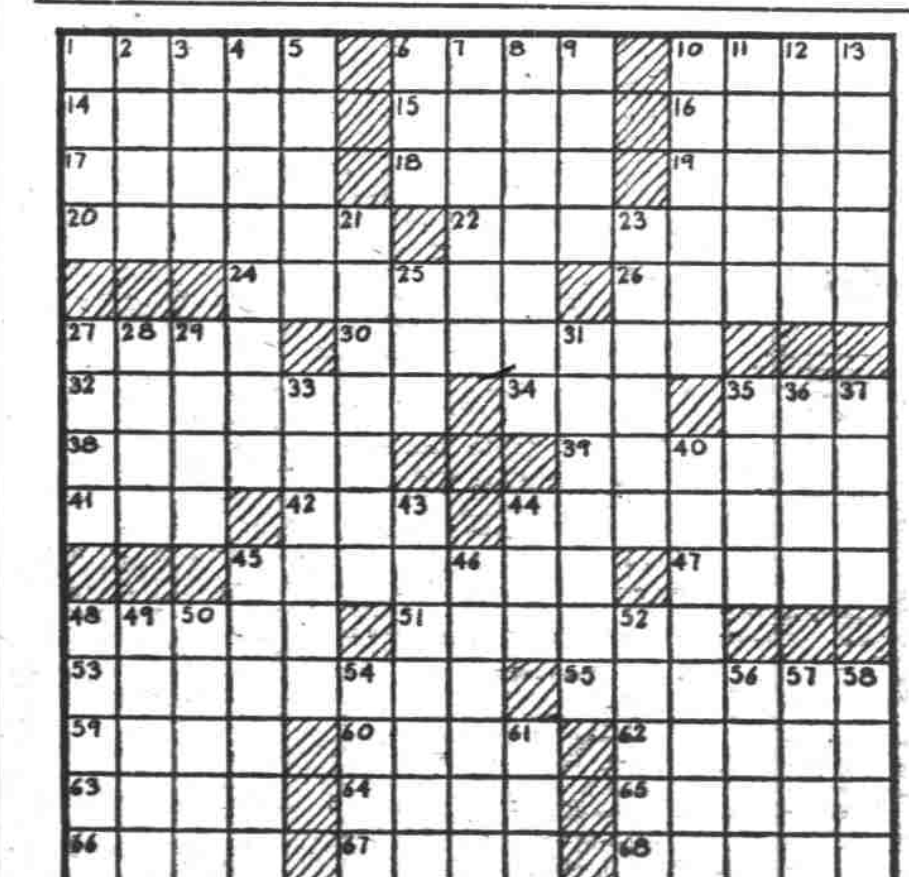
The line-up is: Captain, Edward Yada; pitcher, Edward Yada; catcher, Waldo Gilbert; first base, Hubert Aspinwall; second, Ward Miles; third, Clinton Wampler; short stop, LaRoy Duda; left field, Donald Dunnigan; right, Raymond Duda; center, Sanford Mio.

The team won all their league games. They will play May 6 at the fair grounds.

F. P. CHEDESTER, 1835 N. Church St., Salem.

## Cross-Word Puzzle

By EUGENE SHEFFER

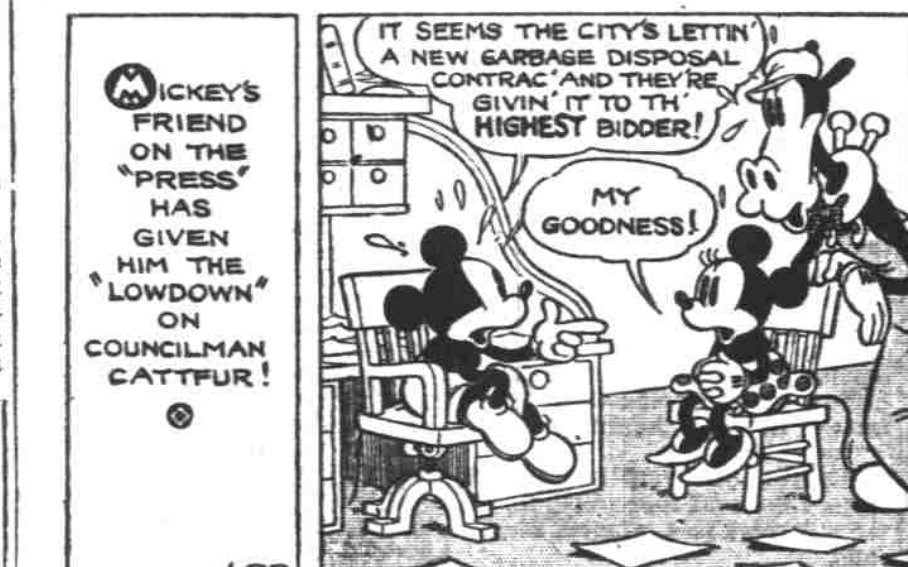


- HORIZONTAL
- 1—material for printing or writing on
  - 6—piece
  - 10—long flexible tube
  - 14—to humble
  - 15—Gaelic
  - 16—wicked
  - 17—a rest
  - 18—relieve
  - 19—marsh-grass
  - 20—endeavor
  - 22—save
  - 24—part of an aggregate
  - 26—starlike flower
  - 27—on the ocean
  - 30—pertaining to this world
  - 32—removing fine particles of matter
  - 34—drunkard
  - 35—axis on which corn grows
  - 36—rily
  - 38—a kind of velvet
  - 41—swelling on eyelid
  - 42—boy
  - 44—pertaining to a league
  - 45—diminisher
  - 47—transfer for a price
  - 48—to guide
- VERTICAL
- 1—a defile
  - 2—to border
  - 3—couple
  - 4—to gauge
  - 5—pass a rope through
  - 6—behold
  - 7—inquiry for a missing article
  - 8—classifies
  - 9—part of "to be"
  - 10—unorthodox opinion in religion
  - 11—manifest
  - 12—utensil for separating particles
  - 13—a small shrub
  - 21—made corrections in literary work
  - 22—seasoned
  - 25—sack
  - 27—sums up
  - 28—ward fat of oxen
  - 29—discern
  - 31—device in an incubator
  - 32—brooder
  - 33—reduces
  - 35—beal
  - 36—verbal
  - 37—hollow, sonorous body
  - 40—diminished
  - 43—word expressing a number
  - 44—nourished
  - 45—midshipman
  - 46—luminous envelope around sun
  - 48—a relish of fruit or vegetables
  - 49—a figure of speech
  - 50—rub out
  - 52—to let
  - 54—tilt
  - 56—male sewer
  - 57—besides
  - 58—act
  - 61—unused
- Here with is the solution to Saturday's puzzle.
- Copyright, 1931, King Features Syndicate, Inc.

## POLLY AND HER PALS



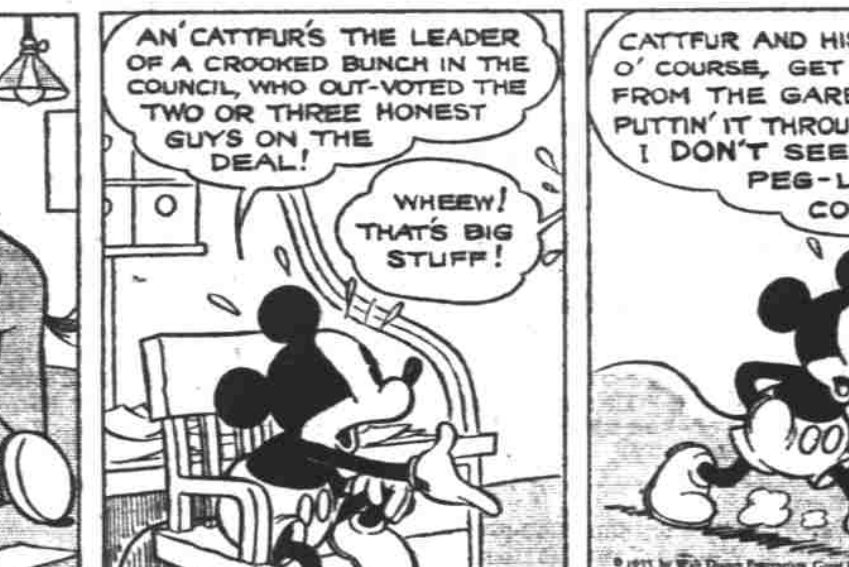
## MICKEY MOUSE



## The Lady in a Glass House



## Out of the Dumps



Fine For Digestion

**WRIGLEY'S SPEARMINT**

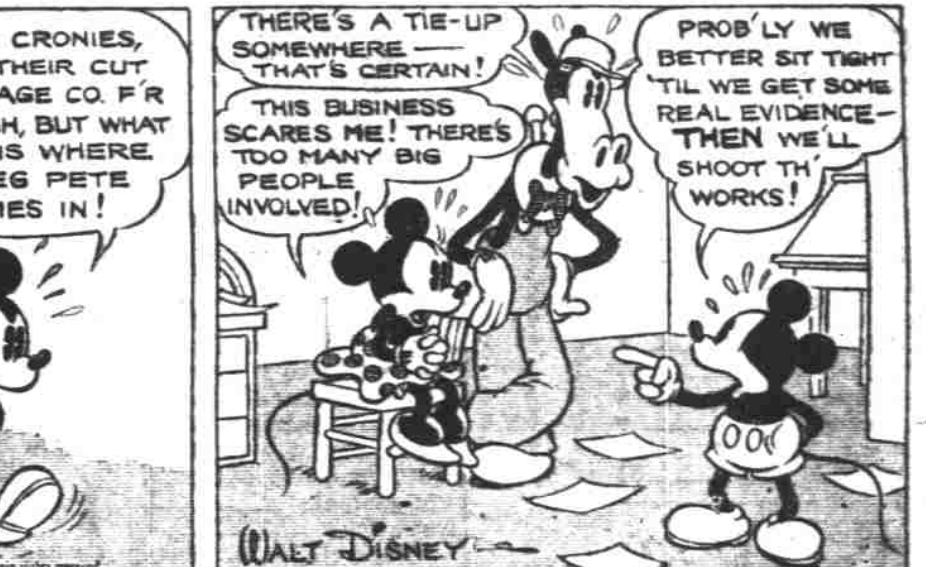
THE PERFECT GUM

Fine For Teeth

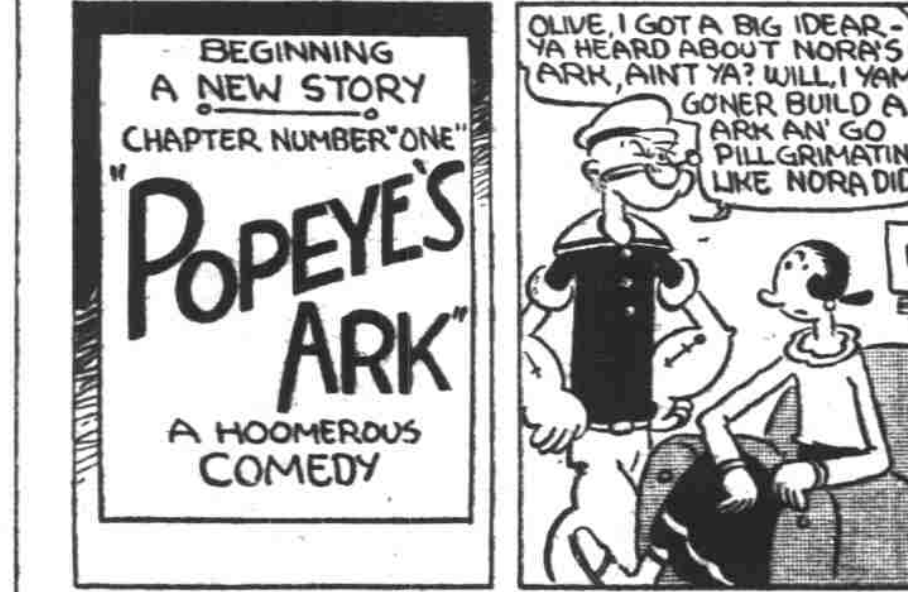
## By CLIFF STERRETT



## By WALT DISNEY



## THIMBLE THEATRE—Starring Popeye



## Now Showing—"Highlights of History"



## By SEGAR



## LITTLE ANNIE ROONEY



## Rose-Colored Glasses



## By BRANDON WALSH



## TOOTS AND CASPER



## The Lure of Wealth



## By JIMMY MURPHY

