

### MARY FULKERSON TALKS AT GERVAIS

#### For Parent-Teacher Meeting At Auditorium Monday Evening

GERVAIS, Jan. 4. — Mrs. Mary L. Fulkerson, county superintendent of schools, will be the speaker at the monthly meeting of the Parent-Teacher association to be held at the auditorium Monday night, January 8. President Buchanan has arranged for a potluck supper to precede the meeting. A large turnout is expected to hear this interesting speaker.

The Presbyterian congregation held a watch night service at the church Sunday night. They gathered in the social rooms at 8:30 where lunch was served and a short miscellaneous program was conducted by Mrs. B. Brown. At 10 o'clock they went to the auditorium where a song service, led by Mrs. C. V. Ashbaugh, was held. At 11 o'clock Rev. Grafious conducted a candle light service, concluding it in an impressive manner at 12.

**Star Installs Tonight**  
Gervais chapter O. E. S. will hold its regular meeting at the Masonic hall Friday night. The four newly installed head officers, Lucille Boosters, Minnie Allison, Ida Minsker and Lillian Harrison will be hostesses for the social hour.

The first of the year was moving day for a number of families here. Mr. and Mrs. A. B. Minsker moved their drug store from its former location on Front street to the property they recently bought and remodeled. They also moved their household goods to the same building. Sterl McCollum moved to a house near the Duck-in-lund. Mrs. W. W. Henry and Mrs. J. C. McDonald moved into the Frank Turner house.

### NUMEROUS GUESTS FOR WALDO HILLS

WALDO HILLS, Jan. 4. — Miss Gerald Joy of Seattle and Victor Rue of Juneau, Alaska, who have been holiday house guests of Mr. and Mrs. R. W. Henry, returned to their homes Monday. Mrs. R. W. Henry will leave this week for the north. Mr. Rue will sail from Seattle January 9 to resume his work in the tool shop in connection with an Alaska real estate firm.

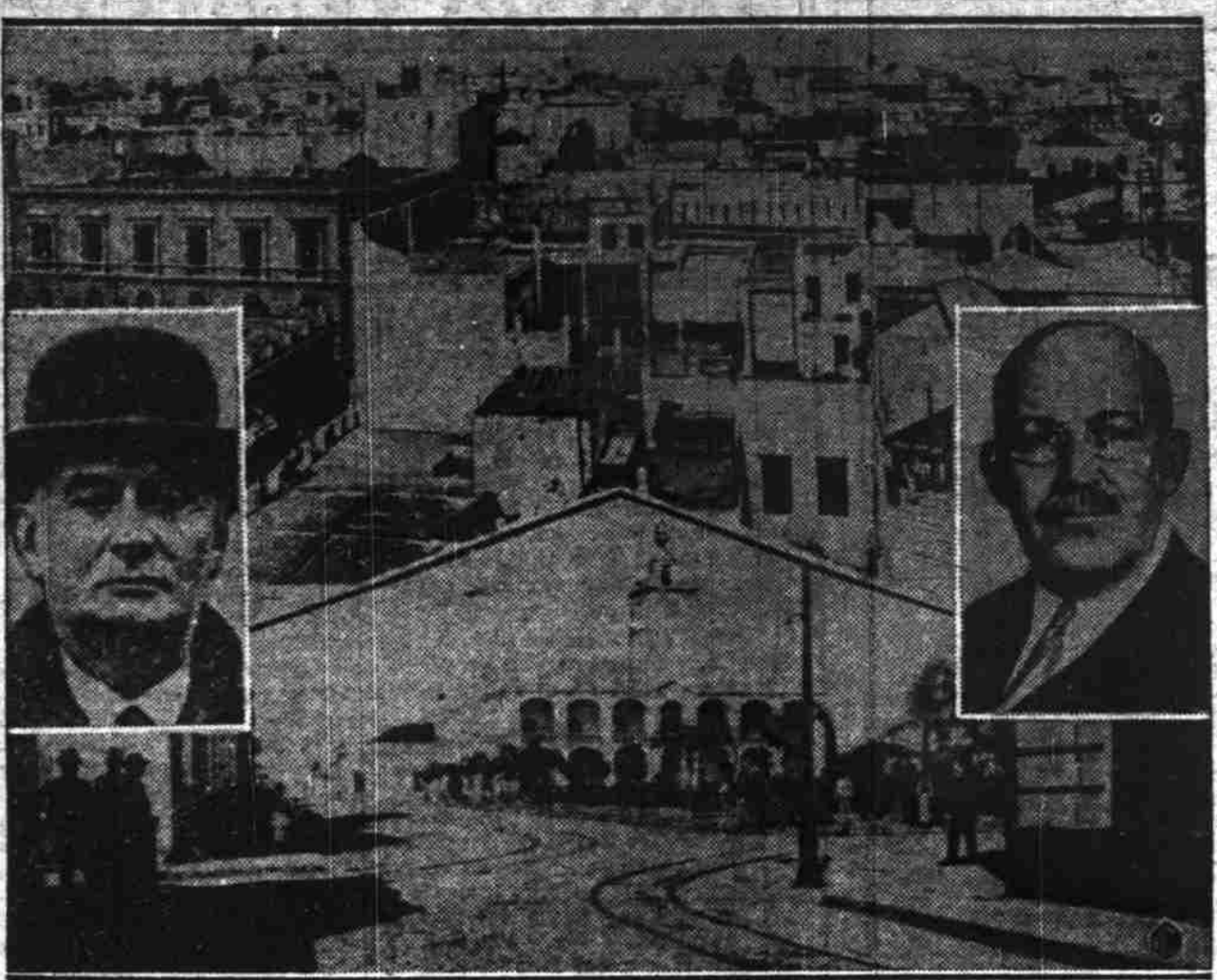
Numerous New Year dinner parties were held Monday. Mr. and Mrs. Fred Kaser entertained Mr. and Mrs. Orrin Jackson of Salem, their daughters, Audrey Ethel, Naomi and Dorothy, the latter a member of the teaching staff of the Shelton, Wash., schools. Also Mr. and Mrs. Henry Jackson and son, Henry Frank, lin. of Independence. In the evening additional guests were Mr. and Mrs. V. L. Brunner and Alvis Brunner of Silverton and Mr. and Mrs. Johnny Brunner and Jane Ogden.

Mrs. Martin Ingleson entertained at luncheon for Miss Hannah Olson, Mrs. Ida Doyle, Diana Doyle and Mrs. C. Palmquist.

Roger Comstock left Sunday night for Eugene to resume his work at the university where he is a senior in Foreign Trade. Martha Goodknecht went back to Monmouth normal Monday. She is a senior.

**CLASSES RESUMED**  
ORCHARD HEIGHTS, Jan. 4. — Children of the Mountain View and Popcorn schools resumed their studies Tuesday following the Christmas vacation. The Misses Georgiana and Eleanor Briggs, teachers at Mountain

### Storm Centers of Uprising in Argentina



Typical street scenes in Sante Fe (lower) and Rosario (top), cities in Argentina, where revolutionary uprising against regime of President Augustin Justo (left) broke out, resulting in many being killed and wounded. The revolt began with a Radical Party convention in Sante Fe, at which former President De Alvear (right) was chairman. De Alvear and several other party leaders were arrested.

### View, braved floods and slides to motor to their home at Hermiston for the holidays. The Popcorn teacher, Miss Josephine Smith, spent the week with relatives in Portland.

### VALLEY MISSION SOCIETY GATHERS

ZENA, Jan. 4. — The Spring Valley Home Mission society held the first meeting of the new year at the home of Mrs. W. W. Henry at Zena, Wednesday. Mrs. Jesse Walling was assistant hostess for the affair.

Mrs. W. D. Henry, president, announced the postponement of the cooked food sale which will be held before the end of the club year in March. Mrs. W. W. Henry reported that 15 individuals were remembered with Christmas cheer from the sunshine basket. Mrs. Charles McCarter, treasurer, reported \$25.30 in the treasury.

The group decided to hold a quilting and make two woolen quilts for an indigent family. Each member is to bring a covered dish for a potluck dinner at the home of Mrs. W. W. Henry where the work will be done. Mrs. W. D. Henry appointed a committee composed of Mrs. William Pruitt, Mrs. Frank Matthews and Mrs. V. L. Gibson to make all arrangements for the quilting. Mrs. Hugh Craig, program leader, presided at the interesting program of Oregon history including a book review on "We Must March," Honore Wilkie Morrow, by Mrs. S. D. Crawford, the story of the Whitman massacre as told by Mrs. Charles McCarter, and the history of Whitman college by Irene Windsor.

**MILL HAND HURT**  
MEHAMA, Jan. 6. — Charles Bouche is laid off with an injured hand. His hand was cut open in the palm by a saw and it was necessary to have several stitches taken. He has been working at the Crabtree mill on the North Fork.

### HOME COMING FOR POPCORN SUCCESS

ORCHARD HEIGHTS, Jan. 4. — An occasion eagerly anticipated in this community is the annual New Year observance and homecoming sponsored by the Orchard Heights Women's club. It was held Monday as usual at the Popcorn school house. A large crowd, a number of whom came from distant points, enjoyed the bountiful midday dinner which was followed by an excellent program assembled by Mrs. J. B. Best.

A brief "In Memoriam" service honored those formerly went to school here, who passed on during 1933. They were: Burnham Southwick, Lot L. Pearce, Otis Wait, William Layton, Mrs. Nettie Lansing and Annie Biets.

Program numbers included: song, "Auld Lang Syne;" welcome, Guy McDowell; invocation, Rev. K. K. Clark of West Salem; readings, Mrs. Cash Roberts of Gervais and Ora Stouffer; vocal solos by Rev. and Mrs. Charles L. Dark of McMinnville, by the Misses Anna and Myrtle Stouffer of Antioch and by Mrs. Ray Barker; violin solo, Russell Smith of Liberty; clarinet solo, Mary Jeanette Clark, by West Salem; accordion numbers, J. B. Best; harp and guitar numbers, Mrs. H. R. McDowell, J. B. Best and Guy McDowell; piano solo, Jeanette Clarke; song, "Blest be

the Tie That Binds." Interspersed with program numbers were brief remarks by Rev. Clark and a talk by D. R. Ruble of Lincoln who spent his early life here. He spoke of the first "literary" society and told amusing anecdotes of his school days at the original Popcorn school which was erected in the year 1857.

Supper and games for the young folks in the evening completed the day's activities.

### Store Building is Erected on Childs' Tract Near Rickey

RICKEY, Jan. 4. — Leo Childs is having a store building erected on one of his tracts in the north end of the community. This will be the second store in this end of the community and is located at the intersection of the Salem, Macleay-Turner and penitentiary roads. Bob Evans owns and operates the other store.

Despite the alternating weather of one day of spring and one day of winter, the flowers and shrubs are not discouraged. The pussy-willows are out and aspens is beginning to bloom.

**L. G. PRESCOTT**  
Experienced Watchmaker and Jeweler - I Also Make and Repair Violins  
423 Court St., Salem, Ore.

### EXACT DATA ON HOG PROCESSING GIVEN

#### Buyers, Processors are Not Entitled to Deduct Tax From Market Price

The most exact information received for the farmer in connection with payment of the hog processing tax is outlined by the AAA as follows:

The farmer is not required to pay the tax if he: (1) Slaughters hogs of his own raising for consumption by his own family, employees or household; (2) sells live hogs to another person for consumption by that person and if the producer butchers the hogs for the purchaser; (3) has hogs of his own raising slaughtered by a local butcher or commercial processing plant, all of the parts

of which are for consumption by his own family.

(4) Slaughters hogs not of his own raising for consumption by his family, but not by his employees or household; (5) has hogs not of his own raising slaughtered for him by a local butcher or processing establishment for consumption by his own family; (6) sells live hogs to serum plants.

A farmer is required to pay the processing tax on hogs if he: (1) Sells live hogs to another person, any part of the products of which are for sale or are sold by that person; and if the producer butchers the hogs for the purchaser; (2) slaughters hogs of his own raising and sells the products to other persons; (3) slaughters hogs not of his own raising for sale to others, in whole or in part.

(4) Trades live hogs for merchandise or services, (5) trades from home-slaughtered hogs; (6) slaughters hogs of his own raising for sale in whole or in part at roadside prices.

Hog buyers, small processors and others buying live hogs for commercial slaughter are not entitled to deduct the processing tax from the regular market price quoted to the seller.

**GUESTS AT HARPETS**  
CLAXTER, Jan. 4. — Mr. and Mrs. W. H. Harpet had as dinner guests New Year's day Mr. and Mrs. Karl Pederson of Albany and Mr. and Mrs. George Tharp, daughter Mabel and son Eddie.

**Dayton Women to Hold Silver Tea**  
DAYTON, Jan. 4. — Fifteen members attended the regular monthly meeting of the Dayton Woman's Civic club held Tuesday afternoon at the club rooms. Plans for a mixed program and silver tea to be held Thursday afternoon January 18, at the club rooms for benefit of the Dayton library and a shower of used books will be a feature.

January Clearance of  
**COATS**  
Every Coat Reduced  
**\$15.00 \$18.88**  
Greater SHIPLEY Store

## Pay'n Takit

"Something Saved on Everything"

2 STORES COURT and COMMERCIAL SALEM  
935 SOUTH COMMERCIAL

# SPECIALS

JANUARY THRIFT  
Prices Effective Fri., Sat. and Mon., Jan. 5, 6 and 8

CRACKERS	N.B.C. Sodas, 2 lb. box	24c	FLOUR	Blue Seal Hardwheat	Every Sack Guaranteed — 40 lb. sack	\$1.59
SUGAR	Pure Cane, Fine 7 lb. Granulated	29c	PUMPKIN	Raymal, No. 2 1/2 cans, each	CITRUS POWDER	15c
CORN MEAL	Yellow, 9 lb. sack	21c	GRAPEFRUIT	L & H, No. 2 cans, ea.	TOILET TISSUE	5c

Silko—1000 Sheet Rolls

« « IN OUR MARKETS « «

STEAKS	12 1/2c	Dill Pickles	8c
BEEF POT ROAST	9 1/2c	LARD	25c
Fresh Ground Beef	10c		

COFFEE	19c	PANCAKE FLOUR	16c
CANDY	10c	Corn, Peas, Tomatoes	25c
Peanut Butter	28c	COCOA	18c
Salad Dressing	29c	FRUITS and VEGETABLES	
CIGARETTES	10c	Carrots, Beets, Turnips	2 for 5c
Grapenuts	15c	POTATOES	43c
COFFEE	27c	BANANAS	5c lb.
Cake Flour	29c		
Pork and Beans	5c		

## IRISH-BING Grocery Co.

294 N. Commercial — 4 Deliveries — Phone 3527

The Store With Low Prices Every Day

WHITE EAGLE Hardwheat Flour	\$1.39	TOILET TISSUE	1000 Sheet Rolls
CRACKERS	2 lb. boxes — Grahams or Sodas	4 rolls	19c
SUGAR	10 lbs.	GRAHAM	10s 35c
COCOA	2 lb. tins	Feed Department	
EGGS	2 doz.	Mill Run	80 lbs. 65c
MORTON'S SMOKE SALT	10 lb. tin	Recleaned Cracked Corn	100 lb. sack \$1.35
		Standard Scratch	4 grains, 100s \$1.50
		Ground Barley	100s \$1.30
		Hodgen Brewster Egg Producer	The mash that produces results \$2.10 100s
		Crown Leader	Egg Mash, 100 lbs. \$1.78
		Med O Ration	Dairy Feed, 80s. \$1.30

## SPEEDY!

LESS THAN TWO MINUTES FROM PACKAGE TO OVEN!

What a delight to the hostess...the speedy and easy way to make delicious cinnamon rolls, gems, waffles biscuits and Fisher's famous scones.

• Insure one successful baking after another by using the recipes on and in the package. Ask your dealer for Fisher's Biscuit Mix today.

Test it in your own kitchen, and enjoy the plaudits of your friends and family.

• Every batch of Fisher's Biscuit Mix is tested in the home kitchen of Mary Mills located at the plant. Ask for FISHER'S BISCUIT MIX.

TWO SIZES: One Pound 2 Lbs. 8 Ozs.

**FISHER FLOURING MILLS COMPANY**  
PORTLAND SEATTLE TACOMA