



ALEXANDER SMART, ESQ. BY DOC WINNER.

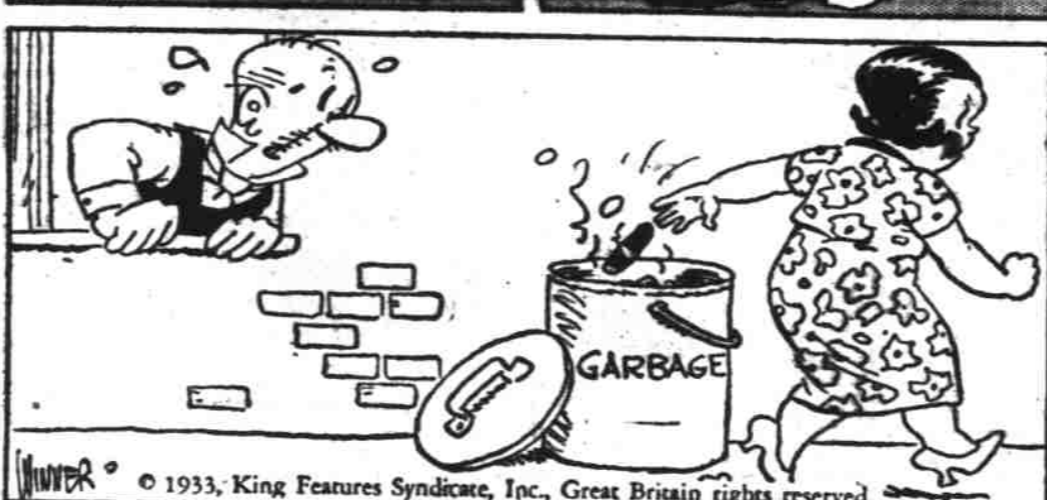
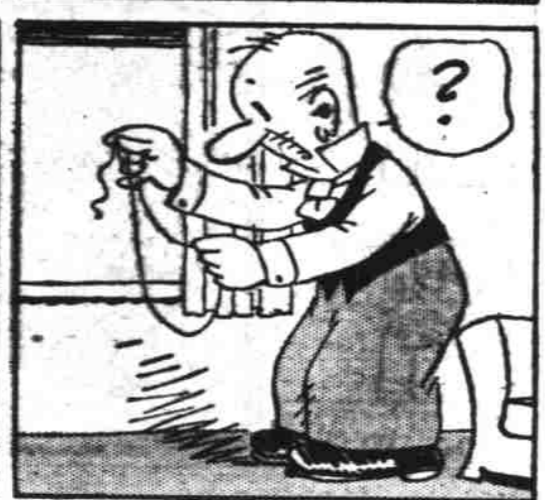
Registered U. S. Patent Office.



THE ELMER GAME



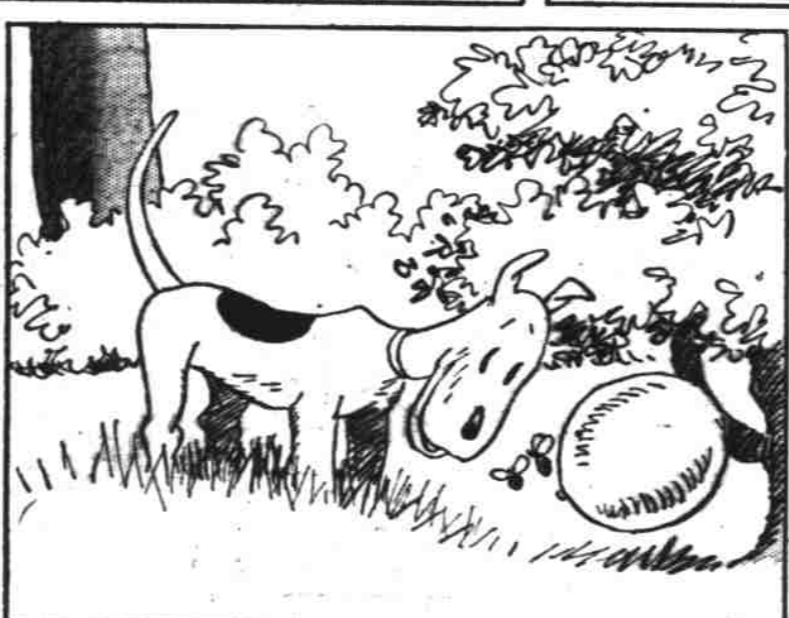
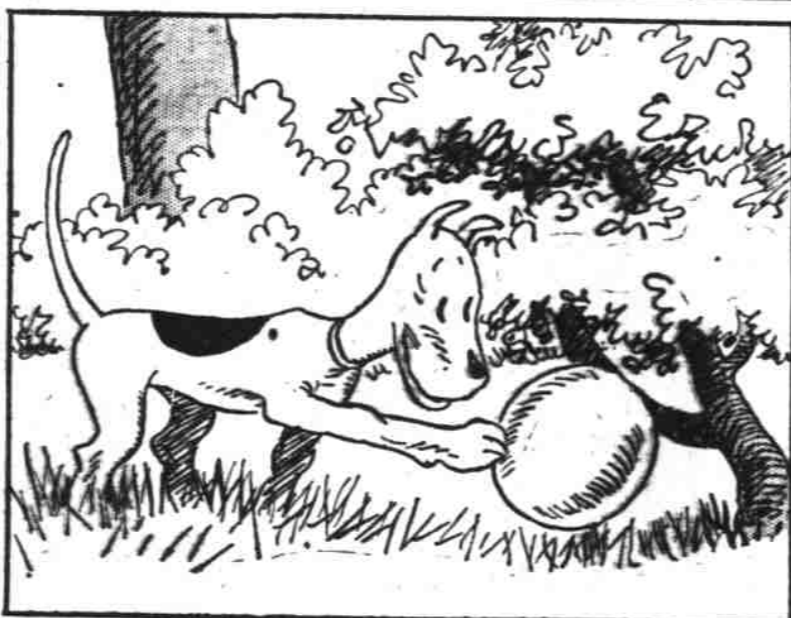
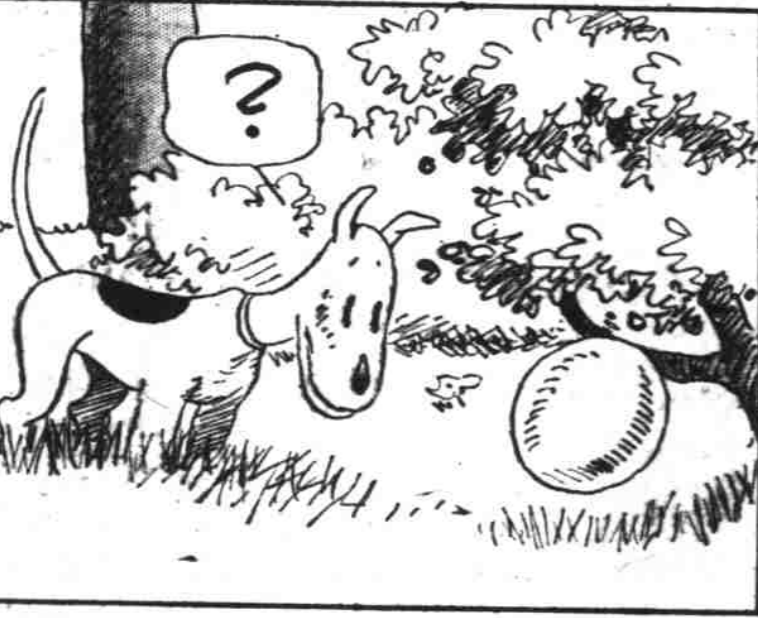
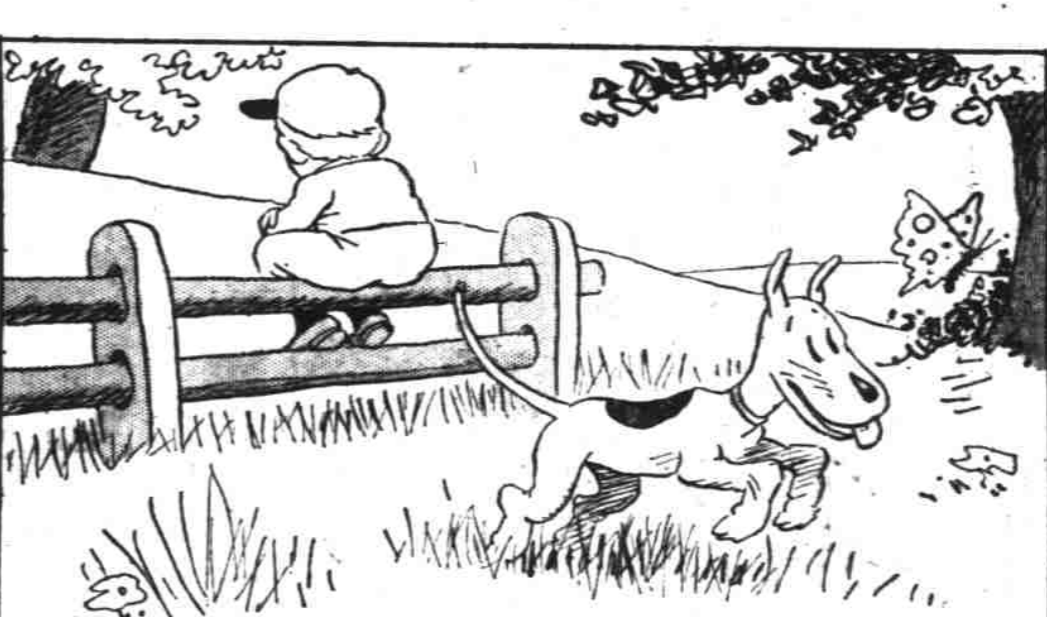
TURTLE TUG OF WAR IS A GOOD GAME TO PLAY ON THE BEACH. A LINE IS DRAWN IN THE SAND TO SEPARATE THE TEAMS AND THE 'TURTLES'; OR TWO OF THE PLAYERS, DROP TO THEIR HANDS AND KNEES, FACING IN OPPOSITE DIRECTIONS WITH THE SOLES OF THEIR FEET TOUCHING AND THEIR TOES ON THE LINE. THE RIDERS MOUNT THE BACKS OF THE 'TURTLES', WRAP THEIR LEGS AROUND THE BODIES OF THEIR MOUNTS AND REACH BEHIND THEM AND GRASP THE HANDS OF THEIR OPPONENT. AT THE WORD 'GO' THEY BEGIN A TUG OF WAR. THE PLAYER 'UNHORSED' FIRST, OR THE TEAM PULLED BACK OVER THE LINE LOSES.



© 1933, King Features Syndicate, Inc. Great Britain rights reserved.

Elmer

Registered U. S. Patent Office



© 1933, King Features Syndicate, Inc. Great Britain rights reserved.

8-20 WINNER

