

ELECTION PROPHET GIVES HOOVER EDGE

A. P. Speer Successful in 10 of 11 Forecasts on National Ballots

A close contest at the polls Tuesday, but with the electorate giving Hoover the presidency for another term by 293 electoral votes over 238 cast for Roosevelt, is the forecast made by A. P. Speer of the French shop here.

NEVER HEARD OF DEPRESSION



The photographer didn't have to tell this young man to look at any birds to make him smile. The little fellow was tickled silly to strut his stuff for the camera.

POTLUCK DINNER IS SCHEDULED BY CLUB

WEST STATON, Nov. 7.—More discussion was given to the contest at the Community club meeting Friday, at which President Carl Gibson presided.

Discussion was given to whether or not the club should meet once a month or to keep meeting twice a month as it does now, but nothing definite was decided.

The Safety Valve - -

Letters from Statesman Readers

THE ANSWER Two Frenchmen leaned upon their axe In the northern woods of Maine.

attorney reports an endorsement from the Marion county democratic central committee. I am a member of this committee and have attended every meeting of the committee.

ATTACKED



Miss Albina Monkewicz, of Brockton, Mass., a student at Boston University, who is near death in the Massachusetts General Hospital, Boston, as the result of head injuries and disfigurement.

makers, even at the cost of our children's lives. At the same time, we will eliminate the wholesale gangster - murderer, who will "put a guy on the spot for a grand," by introducing so much legalized competition that he will have to go out of business.

WE ARE FOR TRUE TEMPERANCE. We deplore the evils of the past; we do not advocate the vicious and brutal killings as done in the old Wild West.

Speer, be it known, is something of an astute political prognosticator and his hobby is "doping" out the national election by each state's vote.

When the issues in this campaign became essentially financial, credit, flat money or whatever you want to call it, I knew that three times the populace cheered and hurrahed for Bryan—then went against him strong at the polls.

Illinois he gives to Roosevelt on the same basis, unless the St. Louis speech brought the German vote to Hoover. In eastern thickly populated sections, he says the Hoover vote will not shrink, if any, over 15 per cent.

four weeks he has become not only the outstanding figure in this country, but in the entire world. He is not a politician but a statesman in the purest sense, the local merchant says.

Guild Sewing For Needy; Guy Girls Building Brooder

PIONEER, Nov. 7.—The newly organized guild of the Ellendale community met at the home of Mrs. John Martin, Thursday for an all day meeting.

ALUMNI TO MEET

AMITY, Nov. 7.—The annual meeting of the Amity high school alumni will be held at the high school on November 18.

REPEAL THE LAWS AGAINST MURDER

In view of the total failure and inadequacy of the laws of the commonwealth against murder, the Association Against Murder Legislation (AAML) presents the following statement of its position.

Hunting Minus Card Draws Fine of \$25

INDEPENDENCE, Nov. 7.—J. B. Dotson has been fined \$25 and costs after pleading guilty to hunting without a license.

VISITORS DEPART

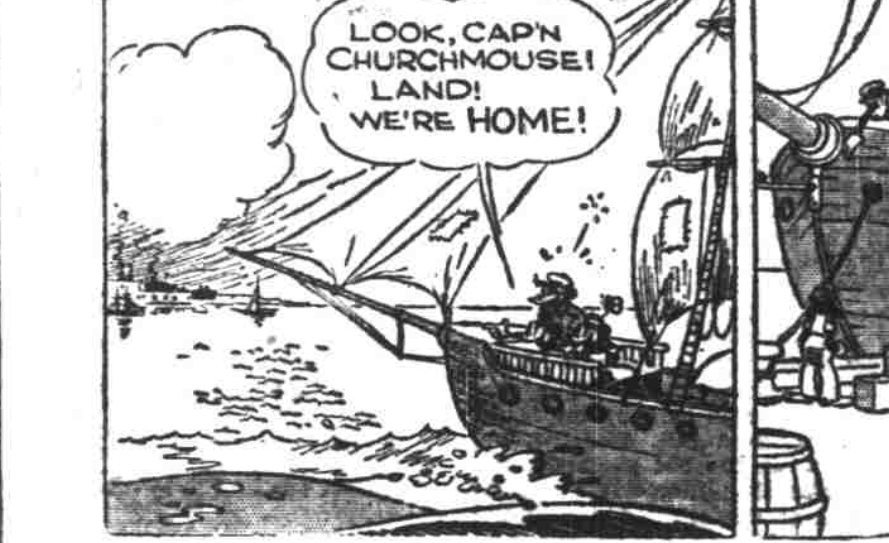
WOODBURN, Nov. 7.—Mrs. Emma St. Thomas and her daughters, Marlene and Ema Lee, left recently for their home in Klamath Falls after having spent the summer visiting with J. G. Harrington.

Cross - Word Puzzle

Grid for a crossword puzzle with numbers 1-51 in various positions.

- HORIZONTAL 1—Possesses 4—Cause to exist 2—Congealed water 3—What character in "David Copperfield" was hypocritical huncher: — Heep? 4—Obtained 15—Whom did President Johnson suspend as Secretary of War in 1867? 7—What is the chief city of Nebraska? 19—Stout clubs 10—Struck 21—Foam 23—Baskets carried on the back 26—Allowance for the weight of a container 27—One of the lowest class series of Sparta 28—Upon 29—Some 30—What city of central Georgia is the commercial center of a highly productive farming and fruit district? 31—Becomes old 32—Personal pronoun 33—What was the first name of the American vice-president who killed Hamilton? 34—Open space 35—What town in Bengal was the scene of Clive's famous victory in 1757? 37—Who was Speaker of the House of Representatives from 1911 to 1919: Champ—? 38—Insect eggs 39—What famous English essayist had a sister Mary who suffered from recurrent mania? 40—Sawed 42—What was the birthplace of Napoleon? 45—Female of the deer 46—On the banks of what river is Ly 48—Skill in performance 49—Bird of nocturnal habits 50—Out wood 51—What American writer and humorist made frequent tours of the country in company with James Whitcomb Riley: Bill—? VERTICAL 1—Possessive pronoun 2—Perform 3—What judge headed an investigation recently into the administration of New York City's government? 4—Near what city of southwestern Montana is the famous Anaconda mine? 5—Who was the Greek god of 6—Strong alcoholic liquor 7—Each (abbr.) 8—What English poet of the Romantic period wrote "The Seasons"? 9—"T" 10—Exclamation of disgust 11—Greek letter 12—Designation 13—Fog 14—What great Athenian legislator was one of the seven sages of Greece? 21—Impress 22—Section of a wall 23—Lure 24—What was the first name of the founder of Rhode Island? 25—Creep away furtively 27—Timid rodents 30—What contemporary American poet is famous for his "Spoon River Anthology"? 31—What desert oasis of the Nile extends to the Mediterranean Sea? 33—Which is the largest continent? 34—Charity 35—Celestial being 37—Showed concern 38—Solitary 40—Fuss 41—Make the calling sound of cattle 42—Depress with fear 43—Woop 44—Consumed 47—Exclamation

MICKEY MOUSE



"Shore Leave"



By WALT DISNEY

THIMBLE THEATRE—Starring Popeye



"Frozen Assets"



By SEGAR

LITTLE ANNIE ROONEY



"Casper's Dilemma"



By DARRELL McCLURE

TOOTS AND CASPER



"Casper's Dilemma"



By JIMMY MURPHY