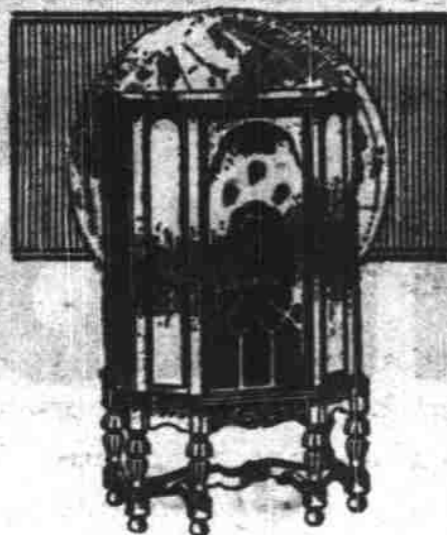


"Phantom of Crestwood" at Elsinore Now

Who Killed Jenny Wren?

The World is Waiting to Entertain YOU



Here is a new command of all that Radio offers! In addition to the standard programs, a Stewart-Warner Radio makes available all the entertainment that the World-Wide Theatre of the Air provides. Come in and let us show you

STEWART WARNER Round-the-World RADIO

GEO. E. ALLEN

236 N. Commercial Tel. 4610

Who Killed Jenny Wren?

Can You Use \$5000.?

Come in and get your free entry blank for the New ATWATER-KENT WORD GAME CONTEST 54 CASH PRIZES



THIS new ATWATER-KENT CONSOLE

Square Deal Radio Service Phone 8944 230 N. Com'l St.

USES the new super-powerful 250-volt tubes to get tone and distance impossible before.

Automatic volume control, tone control, range switch—high-priced features now yours in a magnificent, dependable Atwater-Kent at low price.

Only a few dollars more buys the new 10-tube Atwater-Kent—finest we've ever seen or heard—with the startling new tonebeam, which gives you automatic, silent tuning.

With the Presidential campaign coming, it's time to get an up-to-date radio when you can get a 1932 Atwater-Kent at such prices.

See—hear! No obligation. Easy payments.

\$77.50

Tubes Tested Free

Guaranteed Radio

Repair Service

The only authorized

Atwater-Kent Service

in Salem

RADIO MYSTERY PLAY HERETODAY

Who Killed Jenny Wren? Thousands are Waiting Mystery Solution

With so much hinging on complete secrecy, it was a ticklish undertaking to film "The Phantom of Crestwood" without anyone gathering a hint of the climax of this widely advanced publicized photoplay. It would not have mattered ordinarily to have several persons know the complete plot, but with a prize contest for original endings for awards totalling \$5,000 under way, the authors of this radio broadcast special were morally bound to provide against even an accidental leak of the mystery's solution.

The screen "The Phantom of Crestwood" was being filmed—were permitted to know "Who Killed Jenny Wren." It was not until after the picture was shown for the first time at Warner Bros. Elsinore theatre today.

One thing which facilitated secrecy in the production is that the actual disclosure of the murderer does not come until the last reel of the picture. It is reported that the players, all of whom naturally had formed surmises during the progress of the production, were vastly amazed when the denouement was revealed to them.

The screen "The Phantom of Crestwood" is presented as the complete and absorbing mystery drama.

The picture has a distinguished cast, each member of which is almost to the end under suspicion included in it are Karen Morley, Ricardo Cortez, H. B. Warner, Pauline Frederick, Mary Duncan, Ivan Simpson, Tom Douglas, Anita Louise, Matty Kemp, George H. Stone, Alleen Pringle, Richard (Skeets) Gallagher, Gevia Gordon and Sam Hardy.

DEALERS SHOW NEW IN RADIO

Radio's newest developments will be shown in many different phases this weekend during the showing of the mystery picture, "The Phantom of Crestwood." Several of Salem's leading radio dealers have arranged to display at least one model in the foyer of the Elsinore theatre.

In the display are shown models of Atwater-Kent, Airline, Majestic, Zenith, Stewart-Warner and Motorola Auto Radio. Practically every model on display features some outstanding improvement in radio reception and in construction.

George Allen Hardware, repre-

sentatives for Stewart-Warner, show a master all-wave console, an 11-tube superheterodyne set, with automatic tone and volume controls. It is one of the newest long and short wave receivers, according to Mr. Allen.

The deluxe higher, Atwater-Kent's latest contribution to radio, is being displayed by the Square Deal Radio company. This 12-tube set features tonebeam, automatic silent tuning and class B amplification.

Montgomery Ward & Co. show a beautiful cabinet model, 12 tube Airline. Outstanding developments shown in this set are the Kromatic tuner, noise and static suppressor, automatic volume control and twin super-dynamic speakers.

The Zenith 1933 model, a 12-tube set, features automatic tuning, an exclusive Zenith patent, together with visual tone control and volume control, between station noise suppressor and several other outstanding developments.

The Majestic radio, a large Jacobson console 12-tube superheterodyne, offers synchro-silent tuning as a distinctive feature. Other developments include tone control, volume control, and matched speakers. The Salem Hardware company recently became Majestic dealer in Salem.

A new 2-tube automobile radio, the Motorola, a self-contained, all electric model, is shown by the local Western-Auto Supply branch store. Features include automatic volume control and special shielding-construction.

BROWN MOVED HOME

ZEMA, Oct. 20.—Charles Alexander of Zema went to Salem Monday and brought his brother-in-law, Charles V. Brown, home from the Deaconess hospital where he underwent an appendix operation a week ago. The Browns live in the S. H. Baker farm cottage.

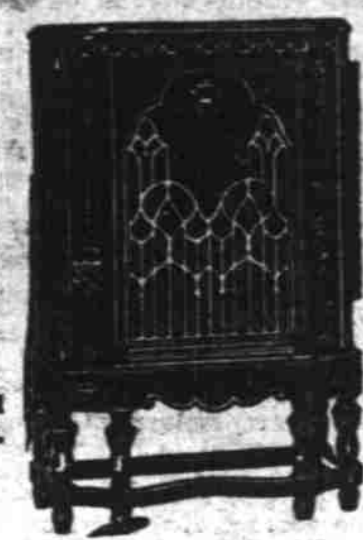
Only three states have a lower percentage of mortgaged owner-operated farms than Kentucky, according to the state's college of agriculture.

Who Killed Jenny Wren?

SENSATIONAL STARTLING PERFORMANCE low price

The nearest approach to perfect tone ever achieved... a new high standard of radio reception... amazing NEW advances... many features found only in the New Majestic...

\$73



Complete with Majestic tubes and Federal tax paid. Small down payment, special easy terms.

A startling low price for this beautiful Chippendale lowboy with large twin super-dynamic speakers, providing the finest and most brilliant tone reproduction. This model, No. 214, possesses many of the outstanding features found only in Majestic receivers.

THE NEW Majestic SUPERHETERODYNE RADIO

SALEM HARDWARE

120 N. Commercial St. Tel. 4906

Who Killed Jenny Wren?

AIRLINE RADIO TWIN SPEAKER

Kro Matic Tuning Wonderful Tone Superheterodyne!

Only Ward's gives you this great 1933 radio achievement — KroMatic tuning!

You can actually SEE and CONTROL the effect of every adjustment — every tiny variation of volume — of tone. Entire set is licensed by R.C.A. and Hazeltine, world's greatest radio laboratories.



\$59.50

\$5.00 Down, \$6.50 a Month

Twin Super Dynamic Speakers, 9 tubes, noise suppressor. Quiet automatic volume control.

and many other features!

Complete with Airline 1-year guaranteed tubes and set installed. Three days free trial. Small carrying charge on deferred payments.

MONTGOMERY WARD & CO.

276 N. Liberty Salem, Ore. Phone 8774

Who Killed Jenny Wren?

The Oregon Statesman

Bargain Offer

BY MAIL \$3. PER YEAR

IN OREGON ONLY

DON'T DELAY — REMIT TODAY — TODAY'S PAPER TODAY

ORDER NOW — RENEW NOW

Cut This Out and Mail With Your Check

The Oregon Statesman, Salem, Oregon

{ } New Subscriber { } Old Subscriber

Find enclosed \$3.00 to cover my subscription for one year to The Oregon Statesman.

Name _____

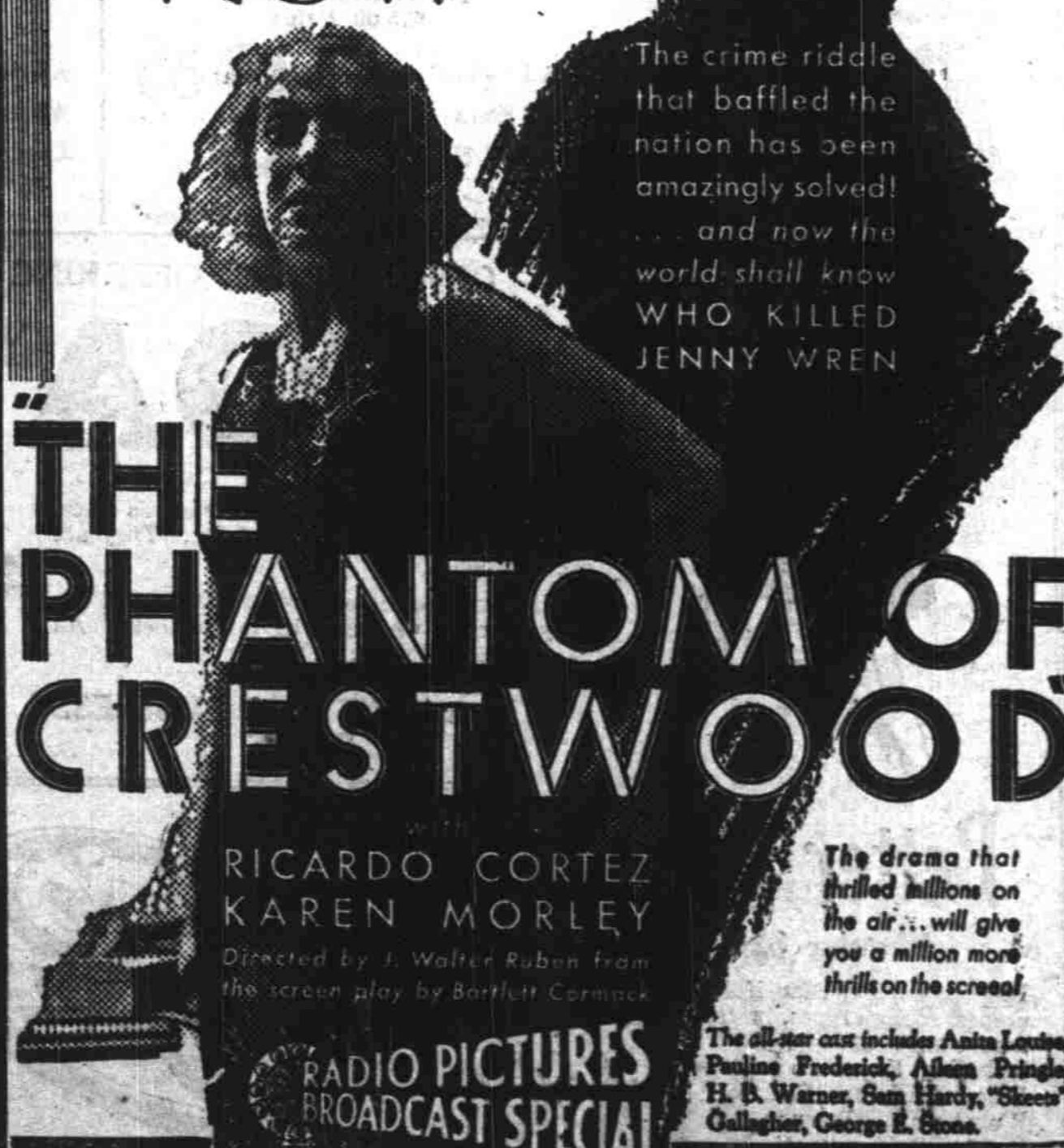
Address _____ Rt. _____ Box _____

Please find \$_____ for Accident Policy.

() Renewal Policy () New Policy

WARNER BROS. Elsinore

NOW



The crime riddle that baffled the nation has been amazingly solved! ... and now the world shall know WHO KILLED JENNY WREN

THE PHANTOM OF CRESTWOOD

RICARDO CORTEZ KAREN MORLEY

Directed by J. Walter Ruben from the screen play by Barlett Cormack

RADIO PICTURES BROADCAST SPECIAL

The drama that thrilled millions on the air... will give you a million more thrills on the screen!

The all-star cast includes Anita Louise, Pauline Frederick, Alleen Pringle, H. B. Warner, Sam Hardy, "Skeets" Gallagher, George E. Stone.

COMING SUNDAY CONSTANCE BENNETT in "Two Against the World"

Who Killed Jenny Wren?

Here's Your Chance to Buy a Radio

RADIO SALE

of every new, used and floor demonstrators in stock of the following makes: Fada, Stewart Warner, Edison, Columbia, Remler, Clarion, Gillfillan, Jackson Bell, Echaphone and Sovereign. Also all used Victors, Zeniths and Stromberg Carlsons at a price to sell and terms to suit.



- \$147.50 Stewart Warner cabinet \$59.50
- \$89.50 Paik cabinet \$39.50
- \$245.00 Columbia Combination \$89.50
- \$79.50 Remler cabinet \$59.50
- \$238.00 Zenith Automatic tuning \$69.50
- \$178.00 Victor Low Boy \$69.50
- \$148.00 Buckham cabinet \$29.50
- \$124.00 Arphophone cabinet \$27.50
- \$89.50 Jackson Bell cabinet \$69.50
- \$79.50 Gillfillan cabinet \$59.50
- \$89.50 Sovereign cabinet \$49.50
- \$206.50 Victor High Boy cabinet \$89.50
- \$238.00 Zenith Low Boy \$79.50
- \$178.00 Stewart Warner at \$69.50
- \$178.00 Victor Low Boy \$79.50
- \$131.50 Victor Low Boy \$49.50
- \$112.00 Fada Low Boy \$72.50
- \$225.00 Echaphone cabinet \$89.50
- \$240.00 Edison cabinet \$69.50
- \$89.50 Clarion Long and short wave \$69.50
- \$124.00 Clarion cabinet \$79.50
- \$225.00 Columbia cabinet \$45.00
- \$158 Brunswick cabinet \$69.50

MIDGETS

- \$70.00 Victor Now \$49.50
- \$49.50 Remler Now \$29.50
- \$89.50 Echaphone Now \$19.50
- \$49.50 Zenith Now \$39.90

Every Radio is Guaranteed to you in perfect condition including sixty-day guarantee same as new merchandise.

Geo. C. Will

482 STATE STREET SALEM, ORE.

Who Killed Jenny Wren?

Who Killed Jenny Wren?

Music Wherever You Drive with

Motorola Auto Radio

6-Tube All-Electric "Super-Het" Compact—dependable—and a marvel in performance. Automatic volume control, dynamic speaker. Positively the latest thing in Car Radio—complete, including "B" Battery Eliminator, 6 Tubes, Aerial, and ALL accessories—for only \$59.50 (INSTALLATION EXTRA)

8-Tube All-Electric "Super-Het" Positively the FINEST CAR RADIO at any price. For distance, selectivity and all-around performance, it cannot be equalled. Automatic Volume Control, Full Dynamic Speaker — Balanced throughout and super shielded. Our LOW PRICE—\$74.95 complete (INSTALLATION EXTRA)

Western Auto Supply Co. N. Commercial at Court St.