

VANCOUVER CHORUS WILL APPEAR HERE

Sacred Concert is Sunday Night at American Lutheran Church

The chorus of St. Paul's Lutheran church of Vancouver, Wash., will present a sacred concert Sunday night at 8 o'clock at the American Lutheran auditorium, Church street between Chemeketa and Center streets. This chorus is directed by Miss Olga Stolee, and is reported to be one of the best in Vancouver, where it has gained an enviable reputation.

This is a good will concert, and no admission or tickets will be necessary. The program follows:

Chorus—"Grieve Not the Holy Spirit" John Steiner Solo—"O Divine Redeemer" Gounod Miss Olga Stolee

Chorus—"Ye That Stand in the House of the Lord" Walter Spinney Solo—"The Pool Hath Said: 'There is No God'" Geoffrey O'Hara Robert Wilson

Chorus—"Sanctus" Gounod Incidental solo, Marvin Johnson II.

Solo—"The Blind Ploughman" Clark Chorus—"Gloria" (from the Twelfth Mass) Mozart

Solo—"Open the Gates of the Temple" Clarence Moore

Chorus—"Open Our Eyes" MacFarlane Anna Helen Moore Johnson, Accompanist.

JOSEPH MORRISON DIES AT HAYESVILLE

HAYESVILLE, June 24.—Joseph L. Morrison died here suddenly Thursday night at the age of 63 years. He had lived here for the past six years, coming to Oregon from Loveland, Colo.

Mr. Morrison was born in Poland, Conn., December 13, 1869. In October, 1893, he was married to Lottie Mason, who survives him. He leaves also a sister, Mrs. Grace Baker, of Loveland.

Funeral services will be held Monday morning at 10 o'clock at the Rigdon mortuary in Salem, with burial in City View cemetery.

Galloway Wires Of Success of General Meet

Mrs. Fletcher Galloway, wife of the Nazarene pastor here who is attending the general assembly of the church at Wichita, Kan., received a wire late this week from Rev. Galloway, in which he states the convention is a splendid success, with more than 4000 delegates attending.

Rev. Fletcher will return here sometime early next week. During his absence, J. G. Minton has occupied the pulpit, and will deliver his last sermons as supply pastor Sunday morning and night. So far this summer, interest in the Sunday night evangelistic meetings has kept up remarkably well, Mr. Minton said. He will preach Sunday night on "Playing with Sin." Special music has been arranged for the day.

Children Have Leslie Program Sunday Morning

Children's day exercises and promotions for the beginners, primary and junior department of the Leslie Memorial Methodist church school will be held at 9:45 o'clock, Sunday morning at 9:45 o'clock, with the following program arranged.

Piano duet, Harold and Roberts Johnson; violin solo, Jean Harrington; solo, Ethel Mae Harrington; demonstration by junior department; piano solo by Doris Harrington; "Summer Flowers" by Jean Hazelton, Frances Ross, Jeanette Rodgers and Margaret French; song, primary department; reading, Frances French; presentation of diplomas to children of the three departments; two songs by junior choir.

LESLEY MEMORIAL Church, 17th and Myers streets. S. Darlow Johnson, pastor. 8 a. m. Morning worship at 11 o'clock. The pastor will speak at 11 o'clock. The pastor will speak at 11 o'clock. The pastor will speak at 11 o'clock.

INGLEWOOD UNITED BROTHERS Corner North 17th and Nebraska Sts. Rev. E. V. Wilson, pastor. Sunday school at 9:45 a. m. Morning worship at 11 o'clock; subject, "The Call to Service." Evening worship at 8 o'clock; subject, "God's Condemnation." Young People's meeting at 7 o'clock; subject, "How Does Christ Meet the Needs of the World?" Mrs. E. O. Shepherd, leader.

SOUTH SALEM FRIENDS South Commercial at Washington Sts. Chas. C. Haworth, pastor. Sunday services: 10 a. m. Sunday school. Nathan Cook, Supt. 11:00 Morning worship. Sermon by the pastor. 8 p. m. Evening worship. Thursday, 8 p. m. Prayer meeting and Bible study.

FIRST EVANGELICAL Bible school 9:45 a. m. Rev. L. Thornton, Supt. Morning worship, 11 a. m. Organ prelude and offertory by Ethel Poling Phelps. Sermon, "Prayer." Christian Endeavor at 7 p. m. Evangelistic service at 8 p. m. Subject, "Limiting God." Mid-week service at 8 p. m. Thursday, for prayer and Bible study.

FIRST CHRISTIAN High and Center streets. D. J. Howe, pastor. Sunday school 9:45 a. m. Rev. L. E. Chambliss, pastor. Christian church, San Francisco, Cal. will preach. Evening worship 8 o'clock; sermon by the pastor. Young People's meeting at 7 o'clock. Christian Endeavor meetings. Special music at each service.

SUNDAY in the Churches

PRESEBYTERIAN Winter and Chemeketa streets. Grover C. Birkett, D. D., minister. 9:30 a. m. Church school directed by Mr. A. M. Ramsay. Supt. 11 a. m. worship. Sermon, "God's Farming Lands." 6:30 Christian Endeavor societies. 7:30 p. m. evening worship. Congregational singing by the orchestra. Sermon: "Half-Baked Cakes."

COURT STREET CHRISTIAN Corner Court and 17th. Hugh N. McCallum, pastor. 1744 Chemeketa street. Bible school at 9:45. Mrs. Irene Walker, Supt. Morning worship and sermon at 11. Theme, "Courage to Live." Christian Endeavor societies at 7 p. m. Evening evangelistic service at 8 p. m. Spirited congregational singing and sermon—"Getting Acquainted." No mid-week services Wednesday night due to convalescent sessions at Turner camp grounds.

IMMANUEL BAPTIST Corner High and Academy streets. Sunday school at 10 a. m. Lesson: Ruth 4. Preaching at 11 a. m. and 7:30 p. m. Mid-week prayer and testimony meeting on Thursday evening at 8 o'clock.

ST. VINCENT DEPAUL (Catholic) Highland and Myrtle avenue. Rev. Thos. V. Kennan, pastor. Phone 6511. Sunday masses at 7 and 9:30 o'clock. Week-day services at 8:15 o'clock.

REFORMED CHURCH Corner Capitol and Marion streets. W. G. Lienkaemper, pastor. Sunday school 10 a. m. P. E. Kruse, Supt. German services 10 a. m. Subject: "Jesus and Zacharias." English services 11 o'clock. Subject: "Elijah under the Juniper Tree." Special music.

LABISH EVANGELICAL CLEAR LAKE — Church school and worship held because of Hayesville district S. S. Convention. MIDDLE GROVE — Church school 10 a. m. T. Walker, Supt. Sermon E. L. O. E. at 7. Topic: "How Does Christ Meet the Needs of the World?" Evening worship at 8. Subject: "God Comes." Society meeting at the church Wednesday at 8 p. m.

LABISH CENTER — Church school 10 a. m. W. A. Starker, Supt. C. E. at 7. Leader, Erma Hornsby. Mid-week devotions Thursday at 8 p. m. H. R. Scheuerman, pastor, 1181 Union street, Salem.

ST. PAUL'S EPISCOPAL Church and Chemeketa streets. Rev. Geo. H. Swift, rector. Holy Communion 7:30 a. m. Morning prayer and sermon 10 a. m.

AMERICAN LUTHERAN Church street between Chemeketa and Center streets. Rev. P. W. Erikson, pastor. 11 a. m., "Christ Manning His Church." Reception of new members at this service. Sunday school at 9:45 a. m. A. A. Krueger, Supt. The Luther league at 6:30 devotionals. No evening service.

LATTER DAY SAINTS Nelson building, corner of Chemeketa and Liberty. Sunday school at 10 a. m. Preaching at 12.

PENTECOSTAL ASSEMBLY 427 State street, upstairs over the Man's Shop. Sunday school at 10. Preaching at 11 a. m. and 7:45 p. m. Meetings Tuesday, Thursday and Saturday nights at 7:45. H. W. Coulton, preaching.

FIRST CONGREGATIONAL Center and Liberty streets. J. R. Simonds, pastor. Sunday school 9:45 a. m. Morning worship 11 o'clock. Subject: "Falling and Letting Go."

FIRST SPIRITUALIST Last service before the summer vacation on Sunday evening, June 26 in the Nelson hall, 351 Chemeketa street. Mrs. Edith Howard Scott of Eugene will be there to assist with messages. A christening and special program. The lecture topic will be "Spiritual Interpretation of Crossing the Red Sea." A circle will be held from 5:30 to 7:30.

ST. JOHN'S EVANGELICAL LUTHERAN Missouri Synod, 16th and A streets. Rev. H. W. Gross, pastor. English services at 9:45 a. m. German services at 11 a. m. Sunday school at 9 a. m. Wm. O'Neill, Supt. Regular congregational meeting Monday evening, June 27.

FIRST BAPTIST Marion and North Liberty streets. Britton Ross, minister. 9:45 Bible school, Fred Brewer, Supt. Morning worship at 11 a. m. Special music by the male choir. B. Y. P. U. at 7 p. m. Prayer meeting before the evening service at 7 o'clock. Organ prelude at 7:45. Miss Miller, organist. Evening service at 8 o'clock. Sermon, "The Millennium When Will It Begin?"

FIRST METHODIST EPISCOPAL Rev. E. Earle Parlor, minister. State and Church streets. Church school at 9:45 a. m. 11 a. m. public worship. Sermon: "Midway Open Life's Journey." Rev. Melville T. Wire of Klamath Falls, Ore. Special music. 6:30 p. m. Young People's Forum. 8 p. m. High School Epworth league. 8 p. m. Informal evening services. Sermon and special musical features.

SALVATION ARMY 241 State street. Services are held on Sunday, 11 a. m. Holiness meeting. 2:30 p. m. Sunday school and 8 p. m. Salvation meeting. Also on Tuesday, Thursday and Saturday, 8 p. m. Adjutant, R. Parsons.

JASON LEE MEMORIAL M. E. Winter and Jefferson streets. Hugh B. Fowke, Jr., pastor. Sunday school at 9:45 a. m. Morning worship at 11 o'clock. Evening worship at 8 o'clock. Young People's meeting 7 o'clock.

ALLIED GOSPEL TABERNACLE 655 Ferry street. W. G. Caldwell, pastor. Phone 8093. Sunday school at 9:45 a. m. Mrs. Gilbert White, Supt. Morning worship at 11 a. m. Service at Old People's Home at 3 p. m. Sunday evening evangelistic service at 7:45 p. m. Prayer services on Tuesday and Friday evenings. Young People's Cottage prayer meeting at Joe Wilson's Thursday evening. Service at Bellevue church at 11 a. m. Sunday. Service at Bellevue church at 11 a. m. Sunday. Sunday school at Hall's Ferry school house at 3 p. m. Sunday. Service at Hall's Ferry Sunday at 8 p. m.

FIRST CHURCH OF CHRIST, SCIENTIST Chemeketa and Liberty streets. Sunday services at 11 a. m. and 8 p. m. Subject, "Christian Science." Sunday school at 9:45 and 11. Testimony meeting Wednesday at 8 p. m. Reading room at 405 Masonic Temple open from 11 to 5:30 except Sundays and holidays.

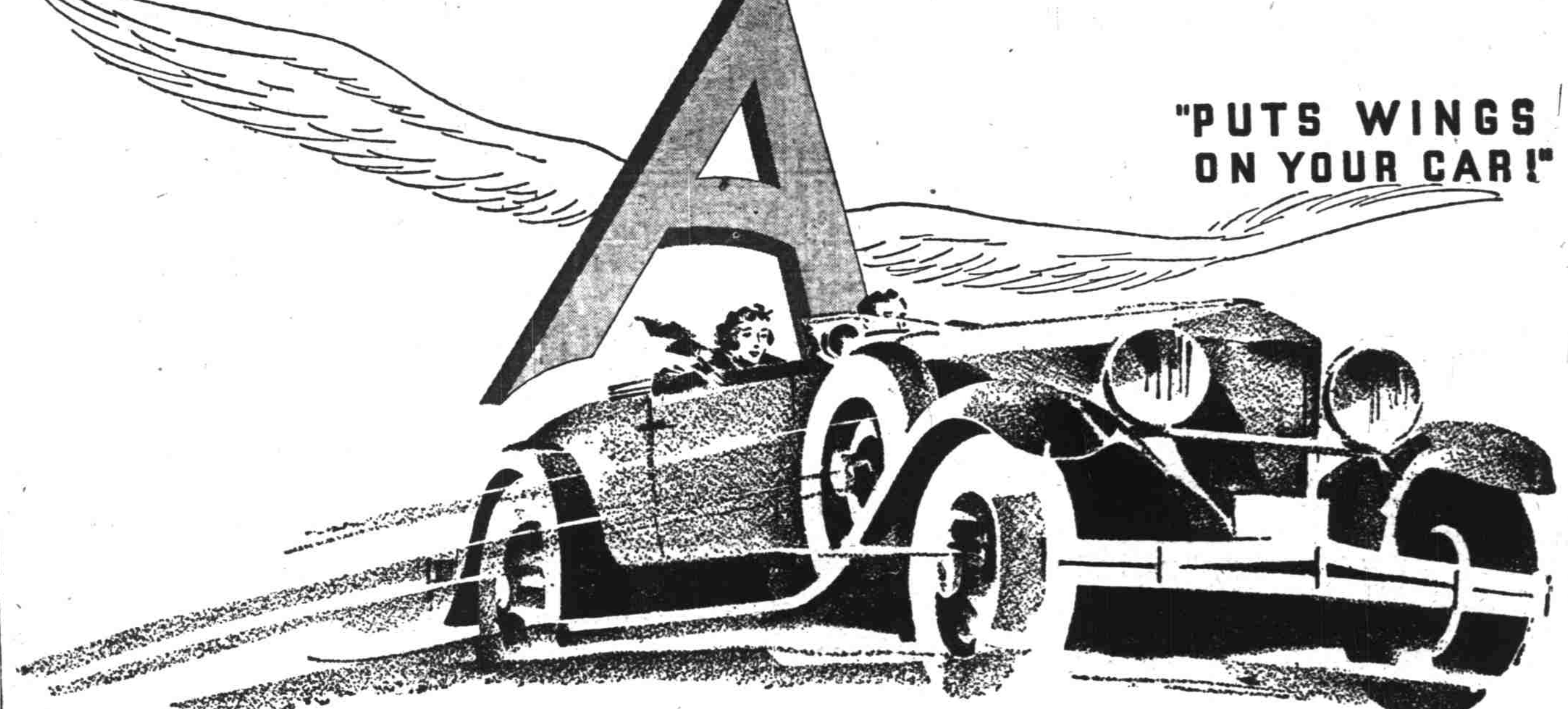
REEBER COMMUNITY Services held in Kutter school house on river road north of Salem. Hayes Ball, pastor. This Sunday marks the close of the church year. Services at 10 o'clock. W. E. Savage, Supt. Young people's leader, Lorraine Beersoff. Church worship at 11 o'clock. Theme: "Peace and Unity." No evening services.

TURNER CHRISTIAN Elmora J. Gilstrap, pastor. Sunday school 10 a. m. Morning worship 11 o'clock. After communion, will go to Britzell Grove for picnic basket dinner. Afternoon services at grove. Subject, "Batter Down the Gates." Evening worship 7:30 o'clock; combined with C. E. Young People's meeting. Subject: "Worship in the Out of Doors." Herbert Parr, leader.

closing out the man's shop high-priced stock

it will pay folks to come from miles and miles around today! doors open at 9:30 416 state street - salem

Now!—the New "FLYING A" ASSOCIATED GASOLINE



"PUTS WINGS ON YOUR CAR!"

"AERO-TYPE"—with road-proven octane stability—for Aeroplane performance in your car!

A NEW GASOLINE Buoyant; swift; alert. Proved on the road in cars like yours. Aero-type—with the same octane stability required in aviation gasoline. Yet at no increase in price. Back to fundamentals. Away with meaningless claims. Here are the facts about octane—facts proved on the road and not alone in laboratories. These are basic truths about a new, pure, crystal-clear gasoline made expressly to meet present day requirements. We told our engineers: "Make a new gasoline that will give the motorist the finest results and the most for his money. See that it meets the toughest tests of today's driving." The result—this new, aero-type gasoline, with 4 Exclusive Developments 1. OCTANE STABILITY. Gasolines with so-called "high octane" numbers but without octane stability are rejected for aviation service because they knock under severe operating conditions. Associated "FLYING A" for your car has identically the same octane stability* required in aviation gasolines. You get sustained anti-knock performance no matter how fast or hard you drive. 2. HEART-CUT OF THE CRUDE. Associated "FLYING A" is refined from the heart-cut only of selected gasoline crudes. Heavy fractions and too-volatile fractions are rejected. That's how you get aero-type quality, for aeroplane performance in your car. You need not fear dreaded vapor-lock—those "popping," gassy fractions are gone. 3. EQUI-FRACTIONATING PROCESS. This "cream of the crude" then goes through our exclusive equi-fractionating process to assure all 5 vital performance qualities—Starting, Pick-up, Power, Speed and Mileage—not just one alone. A truly balanced motor fuel is the result. 4. CLIMATICALLY CORRECT. Wherever you drive you'll find Associated "FLYING A" specially refined for climatic conditions there and then. We studied 10-year temperature records for districts and seasons. Now, 4 times a year we adjust your Associated "FLYING A" in accord with the weather in each of the 4 coast sections. This seasonal adjustment assures 5-quality performance at all times. Today you can prove these exclusive developments for yourself, with a tank-full of Associated "FLYING A" Aero-type Gasoline from the red, green and cream pump. Its smooth, dynamic, quiet performance is the result you've been looking for in gasoline. *Octane numbers* are based on laboratory ratings. In actual road performance they fail to indicate anti-knock efficiency. Their value breaks down under road operating conditions. Hours of driving in cars like yours proved the unexcelled octane stability of Associated "FLYING A" Gasoline at all speeds and under every driving condition. "Octane numbers" mean nothing; it's road-proven octane stability that counts.

FLYING A "AERO-TYPE" GASOLINE ASSOCIATED TUNE IN—Associated Spotlight, 90-minute radio extravaganza, every Saturday, 8:30 p. m.—KFI—KGO—KGW—KOMO—KHQ—ASSOCIATED OIL COMPANY