

SEMI-DRESS COATS HAVE FITTED LINES

Cape or Scarf Collars and Clever Fabric Sleeves, No Skirt Fullness

Although there is a large variety to the number of fabrics, colors and treatments evident in this spring's coat styles, the majority of the semi-dress, average daytime types concentrate on easy fitted lines through the waist, unmarked by any belt or sash.

Although not as frequently as in dresses, the dolman sleeve influence is seen in spring coats because of its definite tie-up with the trend for shoulder width. In most instances, however, this effect is gained through short cape collars, detachable capes, and drop shoulder effects. There is also seen rounded yokes which develop into leg o' mutton sleeves, the yoke and upper portion of the sleeves frequently occurring in a contrasting color, or contrasting shade of the same color.

The vogue for buttoned necklines continues to be popular, and the one sided effect the best liked. Occasionally this is seen in a cross scarf effect, both ends of the scarf buttoning well over the shoulder, or at the extreme side, at the shoulder seam. These scarves are frequently of double character—that is they may be worn opened and turned back, as revers.

The same effect is obtained in the use of fur trimmings, which are often detachable. When they are closed (usually looped through a slit or tied) they form a wing-shaped bow the full width of one's shoulders, and when they are open they can be worn to form a jabot-shaped collar of shaped collar of shaped revers. Other uses of fur include plastrons, cow effects, and the capelet, these being either attached, or removable from a coat featuring the tiny, standing collar. In these, particularly white, flat furs such as galyak, caracul, and broadtail are favored.

In the coat of more elaborate styling is found the wrappy cape collar which is quite deep, and uses a wide band of flat fur such as kidskin—or fluffy fur such as fox or lynx, to accentuate its high style significance.

This is just one interpretation of the collar which may be draped to suit the personality or mood of the wearer, and we find it in informal fabrics for sport wear, as well as in formal fabrics for afternoon.

One very odd, and very practical new development in the coat theme is the garment which comes with two collars which can change its character from a casual one to a decidedly dress-up one. These collars are selected from

Chic, eh, What?



These two styles of hat for the lady who would be correct in her gear are safe and smart.



Kathryn Crawford MGM in a Prystalline Florentine tan

stoles, capelets, and scarfs, either all of fur, or of fur and fabric combined. The coats themselves usually feature tiny built up collars, to which the other is entirely unattached, except through perfect fit.

Bright colors are definitely destined to enjoy a tremendous season, and they will not be confined to sports coats, for they are seen everywhere, even in formal afternoon versions, in which instances the wearer usually selects a perfectly harmonizing dress.

In the sport coats, the combination of two colors will be very often seen, and one of the most popular versions of this in the coat with a chocolate brown skirt, and a yellow green to pand scarf. Twill or granite weaves are newcomers to the field for dressy coats, and a small number of silks are found (for formal afternoon wear only). The beige and bright blues are the most popular.

Beacons Installed
SAN DIEGO, Cal.—(AP)—Passenger plans and air mail service between here and Atlanta, Ga., will get under way about January 1, when the lighting system between Phoenix, Ariz., and San Diego is completed.

RAISED WAISTLINE CHIEF INNOVATION

Reappears in all Articles Of Apparel; Sleeves Hold Limelight

Fashion's piece de resistance this year for gowns of distinction is the sleeve, and her favored variation from the styles of the past several years is the raised waistline. First it slipped until it hardly was, then it wandered about several months ago attempting the raised effect but, unfavored, it went back to the natural line or lost itself in the silhouette effect.

Now the waist line has succeeded in becoming a part of gowns, coats, suits and negligees. Corset manufacturers nosed about and found that the raised waistline was to be an actual fact this year so when undergarments are being purchased the customer is presented with corsets, foundation garments and girdles which meet the demands of gowns with the new waistlines.

There are some handsome new foundation garments this spring in a new rubber print weave which stretches both ways—in fact, a second skin effect, so that the wearer may twist and bend and still the garment stays "put." This new weave is to be had in boned garments, girdles and full foundation garments.

Additional features of these new garments are the dainty lace brasieres, low backs cut almost to the waistline, and velvet straps which prevent slipping on the shoulders. The new foundation garments are extremely light—make the old one feel clumsy, and with the new woven effect has come a better coating on the rubber in order that the wearer may satisfactorily wash the garment.

Falling in line with dress and negligee lines which are cut on the diagonal in order to get a smooth, flow-like fit to the clothes, the foundation garments are likewise cut diagonally in many of the styles and thus the smooth effect so greatly desired by the well-dressed woman begins where it should, with the very first undergarment.

Prices are reasonable in comparison to those of previous years, but the purchaser may still pay \$8 to \$16 for the foundation garment. By the excellent fit obtained, however, the purchaser saves on outside apparel because a cheap dress passes if it is properly fitted, and it cannot fit properly over a poor foundation.

Brasieres shown separately are lovely things, lace and mesh material along with sheer crepes and heavier satins and silks. There is a new model being shown of lace which comes down and meets the girdle in close, form-fitting effect. This type of girdle does away with the well-known "roll," the bane of many a plump woman's style efforts.

Evening Wraps More Youthful And Frivolous

There is a return to elegance in the formal evening mode for this spring as far as dresses are concerned, but evening wraps are, for the most part, slightly little affairs, youthful in silhouette, brief in length, vivid of color and simple in trimming.

That, however, is the general trend, and we find individually distinctive garments which have definite personalities of their own, and which are sure to find wide favor among those women who choose to wear something "different" in preference to the most popular fashion in terms of number.

One of the most striking features of the season's evening wraps is the fact that they, too, accent bodice interest and shoulder width, a fact which has at-

Change in Boys' Suits Minor; Tailoring Gains

So far as boys' styles are concerned, the fit and cut of suits is

almost exactly the same as it was last spring.

Better effects have been gained, however, so far as tailoring is concerned, and we find more and more of an effect being expressed to bring to young boys' and men's apparel the distinguished nonchalance characteristic of the American man's clothing.

The two-button suit is of great significance, with a notch lapel on the jacket. Pinched "back" jackets will be emphasized in dress types, and the semi-belted

jacket will occur frequently on the sport scene.

One of the most noticeable innovations is that of the "patch" pocket, which is coming in strongly due to the popularity of flannels and rough finished fabrics in casual type suits.

TURKEY BANS CREMATION
ISTANBUL—(AP)—Saying that the law must depend upon autopsies for evidence, Turkey's courts have placed a judicial taboo upon funerals by cremation.

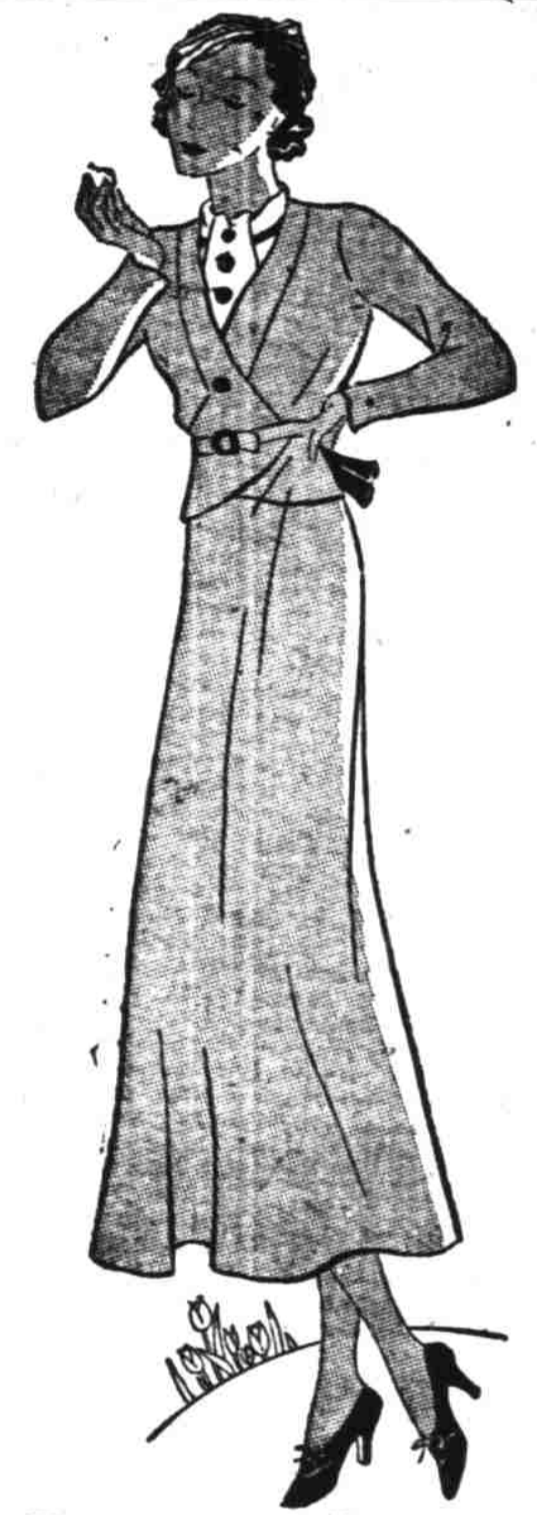
The Famous French Couturier threw up his hands — and said "What you American Women want is SIMPLE CASUAL CLOTHES"

And This Spring — Here They Are



Casual Coats

We're all for the new coats—simple, tailored, casual. And so will you be once you see them, try them on, wear them. The collars are detached or detachable. The fabrics are rough and ready to be seen in any smart company. The colors are those lovely blues, beiges or rusts. The prices are lower than they've been in many a Spring.



Simple Suits

Don't be seen without a suit this Spring, and the simpler, the smarter is a bellboy jacket your type? Or is a reefer style better? Or perhaps you look best in a wrist-length style. Then about colors — bright navy, beige, brown, red? What about fabric—sheer wool, novelty knits, novelty tweeds, flannels? No matter, there's a suit for you, at a price.



Brief Sweaters

This season, sweaters are short. You'll find short sleeves, high necks, fitted lines, diversified necklines, hand-knit effects, crocheted types, linen knits. Get yourself one or two or three or four or maybe more.

Classic Frocks

No more feminine fripperies. No more bustles and ruffles. Classic simplicity is the new idea in dresses. Straight lines. Higher waists. Seaming simplicity.



Mannish Jackets

Jackets, jackets everywhere! Waist-length jackets. Hip-length jackets. Wrist-length jackets. Boleros. Reefers. Cardigans. Tie-arounds. No matter how you prefer your jackets, be sure to have some.

17 GORGEOUS WINDOWS—SHOWING EVERYTHING NEW

Fashion Revue at Elsinore
Tonight... 9:30 P. M.
50 Living Models!



Special Window Displays!
New Window Effects!
Fashions to be had at Miller's

AMAZING..... PHILCO ..SPECIAL OFFER..

This amazing offer is just for a limited time. We have made it possible for you to have one of these radios in your home... and the payments are small. You deal only with the H. L. Stiff Furniture Company.

ONLY 60 Cents

Delivers One of These New 1932 Model Philcos to Your Home — This Pays Insurance for a Whole Year



1932 BABY GRAND

Model 50

This is a new 1932 model Philco and has the latest type of tubes.

\$37⁵⁰

Complete with Tubes

WHY NOT TRADE IN YOUR OLD RADIO?

We will take your old radio in on one of these new 1932 Philco radios.



1932 PHILCO LOWBOY CABINET

Model 50

A beautiful cabinet model with the latest type tubes and EXTRA SIZE SPEAKER.

\$49⁵⁰

Complete Nothing else to buy

H. L. Stiff Furniture Co.
COMPLETE HOUSE FURNISHERS
and
THE MARKET FURNITURE STORE