

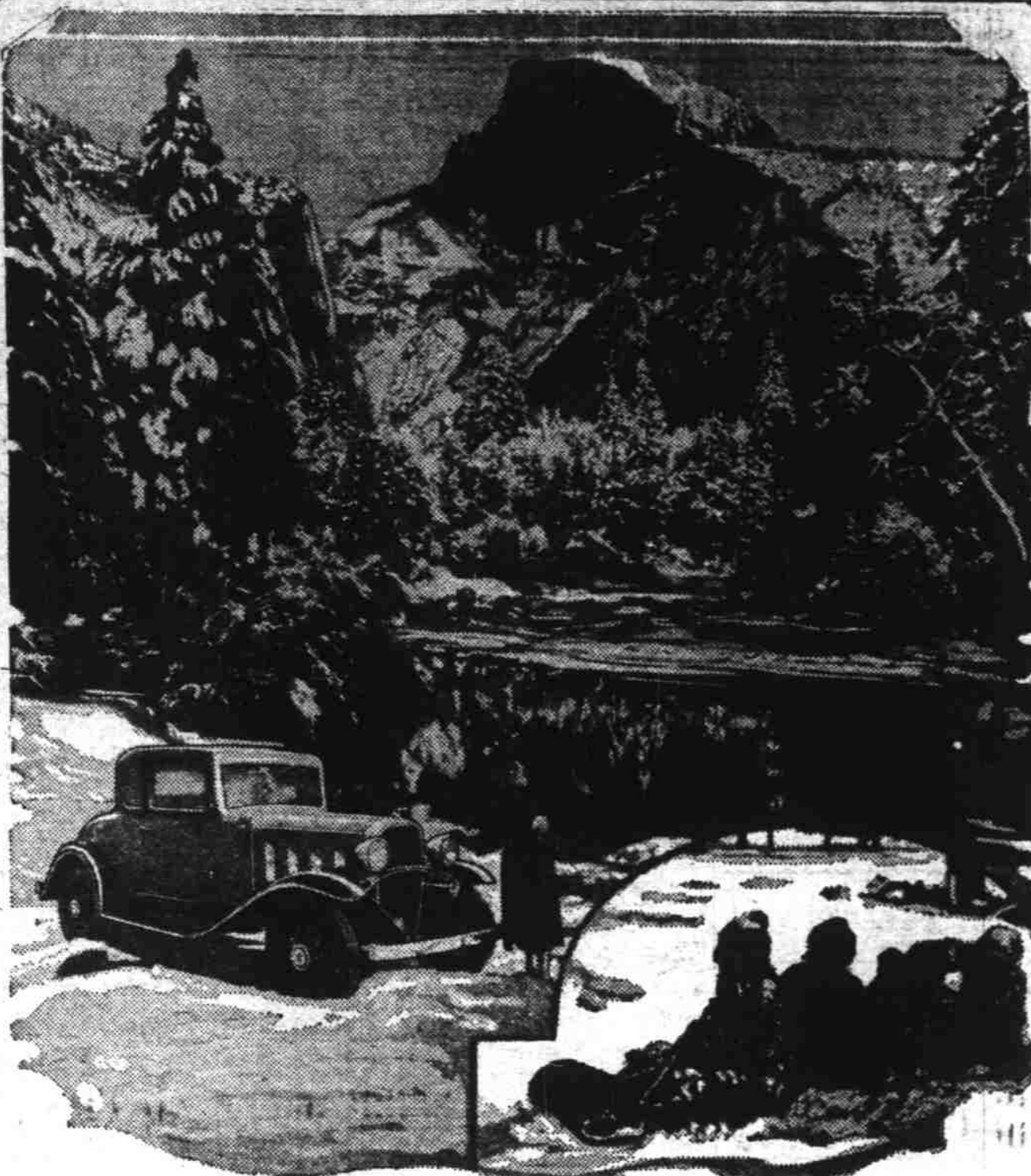
### 4-H SEWING CLUB ELECTS OFFICERS

#### Missionary Society Undertakes Several Projects at Busy Session

ZENA, Jan. 16.—A 4-H sewing club was organized Tuesday at the Zena school. Isabell Kennedy was unanimously elected president. Alice Crawford vice-president and Lillian Kennedy secretary-treasurer. Mrs. W. Kenneth Henry has been chosen as club leader.

Mrs. Louise Patrick is here from Portland visiting old friends and relatives in this vicinity. While here she is making her headquarters at the home of her brother and sister-in-law, Mr. and Mrs. Fred Muller, who reside on the W. T. Scott farm.

### WINTER SPORTS LURE WESTERNERS TO MOUNTAINS



From Mexico to the Canadian line westerners find winter sports readily accessible. In the Pacific north-west there are many retreats for those who love skiing, ice skating or the thrill of a toboggan ride. The 1932 Chevrolet coupe pictured here received a real test in being driven from the seacoast to the mountains, where its fair driver participated in the winter sports.

### PUBLIC INVITED TO SCOUT CEREMONIAL

DALLAS, Jan. 16.—A unique candlelight ceremony will be held at 7:30 p. m. Monday in the Christian church as part of the Dallas Boy Scout work. O. P. West, chief executive for the Cascade Area council, will be in charge of the program.

### CHAMBER MEETING TO BE WEDNESDAY

SILVERTON, Jan. 16.—The Silverton chamber of commerce will hold its annual meeting Wednesday night at the high school building.

### BRANTLEY STEPS OUT

STAYTON, Jan. 16.—The partnership of W. P. Brantley and Andrew Lambrecht, who have been operating the Stayton Meat Market, has been dissolved.

### WEST SALEM OFFICERS MEETING

WEST SALEM, Jan. 16.—Officers' meeting of the Fraternal Order of Eagles of Salem was held Tuesday night at the E. N. Pillsinger home.

### LOCAL INSTITUTE PLANNED, TURNER

TURNER, Jan. 16.—The W. C. T. U. met Wednesday afternoon at the home of Mrs. E. J. Olstrup, with the county president, Mrs. Helen Prescott, the guest speaker. Mrs. J. R. Cox, director of "child welfare" and committee gave a program of interest.

### Dad and Son Affair is Plan Of High Boys

STAYTON, Jan. 16.—A fathers' and sons' banquet will be sponsored by the associated students Wednesday night, January 20, at the Foresters hall at 6:30 o'clock.

### AUBURN CLUB WILL ENTERTAIN FEB. 19

AUBURN, Jan. 16.—The Auburn Woman's club met at the home of Mrs. Roy Rodgers with her twin sister, Mrs. Claude Armstrong, as assistant hostess Thursday afternoon.

### MRS. V. O. KELLY CHOSEN PRESIDENT

WACONDA, Jan. 16.—The regular meeting of the Wacanda community club was held Wednesday at the home of Mrs. Fern Runcorn. This was an all-day session.

### BAPTISTS REELECT BROKKE PRESIDENT

SILVERTON, Jan. 16.—At the annual business meeting of Calvary church the following were re-elected: Halvor Brokke, president; Adolph Alrick, secretary;

### PUBLIC SEATING OF OFFICERS ATTRACTS

DALLAS, Jan. 16.—A public installation of officers for Mistletoe circle No. 33, Neighbors of Woodcraft, was held at the Woodman hall Wednesday night.

### Humphreys is Virtual Commander of Legion

STAYTON, Jan. 16.—Harry Humphreys has been elected vice commander of Stayton post American Legion to succeed Floyd Fleetwood, who resigned.

### HEWITT SPEAKER

AMITY, Jan. 16.—Dean R. R. Hewitt of Willamette university will be the speaker at the W. C. T. U. meeting which will be held here Sunday night at the Christian church.



Triumph New Studebakers at their Drastically Lower Prices represent the 4 great "buys" of 1932—including among their 32 important betterments such outstanding advantages as Safety Plate Glass all around, Automatic Ride Control and 1932 Free Wheeling plus Synchronized Shifting and Automatic Starting.

- Other Studebaker Betterments**
- Armor-Plated Bodies
- Full-Cushioned Power Metal Spring Covers
- Full Automatic Spark Adjustment
- Longer Bodies—Wider Seats
- Air-Curve Coachcraft
- New Convertible Body Styles
- New Inside Sun Visor
- Non-Glare Sloping Windshield
- Heat Resisting Sponge Rubber Floor Mats
- All Bodies Insulated Against Heat, Cold and Noise
- Closed Bodies Wired for Radio
- Improved Brakes
- New Airplane Type Instruments on Dash
- Free Wheeling Dial
- Electric Gasoline Gauge
- Reflex Tail Light
- New Airplane Type Steel-Backed Engine Bearings
- Greater Cooling Capacity
- Finer Body Hardware
- Concealed Hood Latches
- Chromium-Plated Steel Spoke Wheels
- One-Piece Fenders
- Steel Running Boards
- Improved Rim Assembly
- Air Cleaner, Carburetor Silencer and Full Power Muffler
- New Service Policy

### DRASTICALLY LOWER PRICES

Model	New Price	Reduction
PRESIDENT EIGHT 125' W. B.—122 H. P.	\$1690	160
Coupe, for 2'	1690	160
St. Regis B'ham, for 5'	1690	110
Sedan, for 5'	1690	160
Conv. Roadster, for 4'	1820	New
Conv. Sedan, for 5'	1790	360
Sedan, for 7'	1820	New
Limosine, for 7'	1820	360
Dictator Eight 117' W. B.—83 H. P.	\$890	\$115
Coupe, for 2'	1030	120
Coupe, for 4'	1030	New
St. Regis B'ham, for 5'	1030	120
Sedan, for 5'	1030	120
Conv. Roadster, for 4'	1030	New
Convertible Sedan, for 5'	1095	New
COMMANDER EIGHT 125' W. B.—101 H. P.	\$1350	\$235
Coupe, for 4'	1350	235
St. Regis B'ham, for 5'	1350	New
Sedan, for 5'	1350	235
Conv. Roadster, for 4'	1465	New
Convertible Sedan, for 5'	1465	New
STUDEBAKER SIX 117' W. B.—65 H. P.	\$840	\$3
Coupe, for 2'	890	3
Coupe, for 4'	890	3
St. Regis B'ham, for 5'	890	New
Sedan, for 5'	890	3
Conv. Roadster, for 4'	955	New
Convertible Sedan, for 5'	955	New

## What's New in the New Chevrolet Six

When you read what's new in the new Chevrolet Six, you, too, will agree it's the Great American Value for 1932. Synco-Mesh and Free Wheeling combined for the first time in a low-priced car! Engine and chassis improvements that raise performance to new heights of power, speed and smoothness! The finest Fisher bodies Chevrolet has ever introduced. And the same qualities of reliability and economy that have won the approval of millions of Chevrolet owners.

- Synco-Mesh Transmission**  
Synco-Mesh permits you to shift gears with marvelous quickness, quietness and ease. It even enables you to shift rapidly from high back into second, any time you want to use the braking force of the engine.
- A Smoother, Improved Six-Cylinder Engine**  
Chevrolet now has down-draft carburetion, new cylinder head, manifold, counter-balanced crankshaft and rubber mounting—increasing power 20 per cent to 60 horsepower.
- Simplified Free Wheeling**  
To take advantage of Chevrolet's Free Wheeling, simply press a button on the dash. Until you pull it out again, you "Free Wheel." You coast when your foot is off the accelerator. You shift with magical ease.
- Stabilized Front-End Mounting**  
Chevrolet's exclusive method of mounting front fenders, lamps, double tie-bar and radiator securely to the frame stabilizes the front-end and insures steadiness when traveling over rough roads.
- Smart New Fisher Bodies**  
Chevrolet's new Fisher bodies are the smartest ever to appear in the low-price field. Furthermore, Fisher craftsmen have added new elements of strength, quietness and safety to the wood-and-steel construction.

PRICED AS LOW AS **\$475**

**Smoother Operation . . . Distinctive New Front-End Appearance . . . An Improved Clutch . . . Down-Draft Carburetion . . . Counter-balanced Crankshaft . . . Finger-Touch Front Seat**

**SEE YOUR DEALER BELOW**  
**Douglas McKay Chevrolet Company**  
430 North Commercial St.  
**ASSOCIATE DEALERS**  
Hardy Chevrolet Co., Woodburn  
Ball Bros., Turner Columbia Garage, Mt. Angel Halladay's Garage, Monmouth

# GILMORE STARTS QUICKER



## VAPORIZES READILY

### CAREFUL REFINING PLUS BLU-GREEN INGREDIENT IS THE REASON

Scientific balance of volatile qualities, obtained by the addition of the patented (U. S. Patent No. 1654259) Blu-Green ingredient, overcomes stubborn vaporization common to untreated gasolines and causes Gilmore Blu-Green Gasoline to start quick in coldest weather...

Insist on Gilmore. It does more for you than any other gasoline... It is guaranteed!

Return to These Happy Kid Days—Time in on the **GILMORE CIRCUS** Thursday 8:00 p.m. to 9:00 p.m.  
RCA • • • • Los Angeles  
RFO • • • • San Francisco  
RFS • • • • San Diego  
RFX • • • • Portland  
RJR • • • • Seattle  
Sundays 8:15 p.m. to 9:15 p.m.  
KOMO • • • • Seattle  
KGO • • • • Portland  
KGO • • • • San Francisco  
KFI • • • • Los Angeles



# GILMORE Blu-Green GASOLINE

The Only Premium Gasoline at No Extra Cost

GILMORE LION HEAD—PUREST PENNSYLVANIA MOTOR OIL

Safety glass all around, automatic starting and metal spring covers standard equipment on all models at no extra cost. Wired for radio, 17-track standard equipment. All prices at the factory. Bumpers and spare tires extra.

**State Motors, Inc.**  
525 Chemeketa Tel. 8400