

RURAL SECTION GETTING POWER

Extensions Made Beyond Mollala; Vorheis Buys Burns Property

MOLALLA, Dec. 5.—J. Blair Mitchell, in charge of the rural service department for the Portland Electric Power Co. working out of the Oregon City office for Clackamas county was in Mollala this week in charge of new line extension construction work.

The first work done by the crew was the building of a 500 foot of new line in Mollala to serve the Emil Deardorf and Carl Damm family residences. Then the crew was moved to near Liberal where the company is building a two mile extension line to serve twelve new customers. This line will leave the main line near the power substation and end at the Hume farm. The minimum cost for service to the new customers has been figured by the company to be \$1.77 per month.

After the work has been finished at Liberal the crew will be moved to near Mullino where a new line one and a half miles long will be built to serve eight new rural customers.

Vorheis Makes Trade

Perry Vorheis has traded his house and property near the Hodges warehouse to Frank Burns and Mr. and Mrs. Vorheis have moved into the Burns house, between the electric depot and the Southern Pacific tracks. Mr. and Mrs. Vorheis moved here recently from Scotts Mills, where their house was destroyed by fire about a month ago. They had been residents of Mollala for a number of years, before moving to Scotts Mills a year ago. The origin of the fire was not determined.

Mr. Vorheis was asleep in the house and was awakened by the fire. The building was a two story structure and they were living in the second story and were unable to remove any of the household goods. The goods in the lower part of the house were saved.

R. N. A. Entertains

The Royal Neighbors of America met Thursday at the home of Neighbor Bertha Klecker at which time visiting Neighbors from Scotts Mills and Oregon City were entertained at a pot luck dinner. The regular meeting was held in the afternoon. A short program was given by various members of both the Mollala and Scotts Mills Camps.

Those present from Scotts Mills were Neighbors Amundson, Saueressig, Grohng, Swartout, Fry, Johnson, Bess Shepherd, Margery Shepherd, Crites, Smith, Hicks, Wooster, Sanders, Hogz, Nicholson and Dorothy Shepherd. And from Oregon City Neighbor Besie Miller.

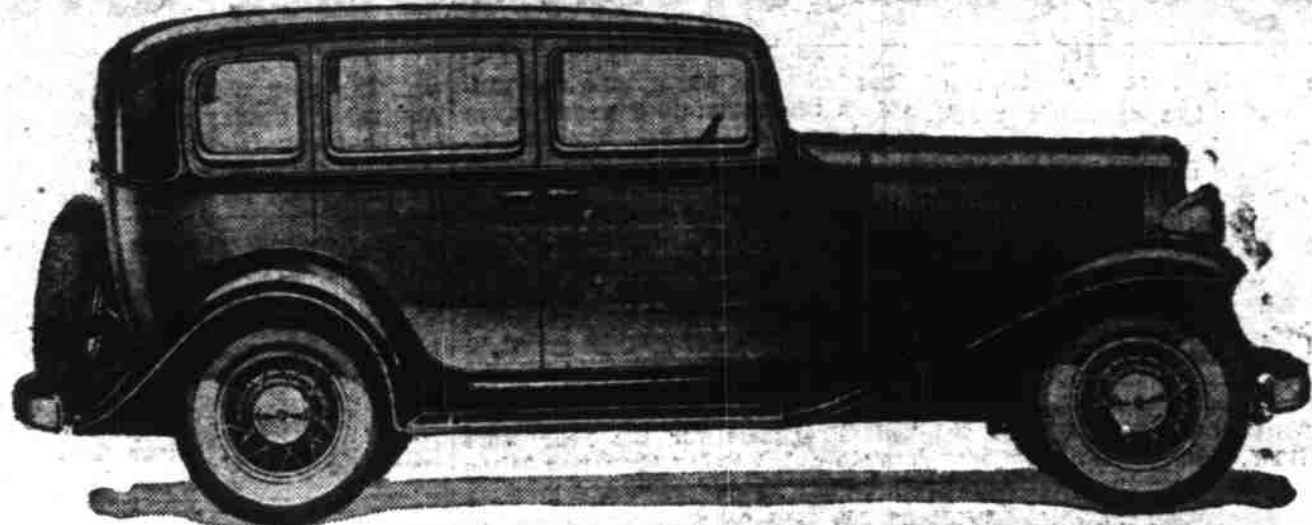
BEAUTY OF SILVER FALLS TO BE SEEN

Have you been around the Silver Falls loop? In the not too far distant future this question may rival the well-known interrogation about the Mt. Hood loop. At least that is the hope of Marion county for the 19 falls at the head of Silver creek, and already engineers are making surveys for the loop.

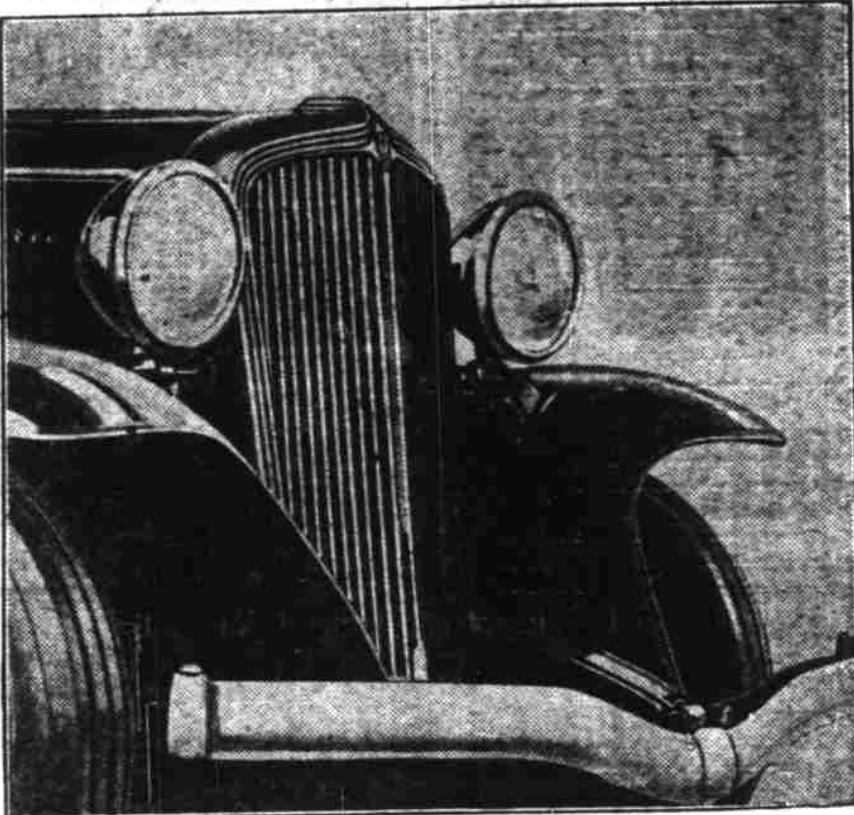
The south Silver Falls will be discernable from the road, according to a new road survey being made by Engineer McGee. The beauties of this falls is now hidden, accessible only to those traversing the foot paths.

Sam Boardman, state highway

NEW ROCKNE SIX MAKES BOW



Long low and aerodynamically streamlined is the Rockne Six "75" five-passenger, four-door sedan shown above. The 72-horsepower motor, cushioned in rubber at all four points of suspension, assures a smooth, consistent high-cruising speed of 70 miles an hour. The wheel base is 114 inches. Wire wheels are standard equipment, as are free wheeling and synchronized shifting.



Smart V-shape radiator shell features the ultra modern styling achieved in the Rockne Six. One-piece steel fenders lead the swank of custom sedan cars. The wide, symmetrical bumper is faced with chromium as are radiator shell and headlamps. Behind the radiator is a 71-horsepower motor.

New Rockne Six Honors Name of Famous Coach

New car to be Offered in two Lines, in Price Range Under \$1000

The Rockne "Six" made its bow to the motoring public last week. It is a product of the Studebaker factories and organization with a separate corporation for manufacture and sales. It is named the "Rockne" after the famous Knute Rockne who was connected with the Studebaker corporation before his death. The car enters the highly competitive field of price ranges under \$1000, in two series. It will be handled in Salem by State Motors, corner High and Chemekeeta.

The Rockne Six will be manufactured in two lines, the lower price group to be called the Rockne Six "65" and to have an f. o. b. factory price of \$585 and up.

The running mate to this line will be called the Rockne Six "75" and its low f. o. b. factory price will be \$685.

A total of nine models will be manufactured, thus making it

possible for dealer stocks to be small, while a representation of models sufficiently large to serve any motorist, will be available.

Both Rockne Six lines will be equipped with improved free wheeling in all forward speeds and, in addition, synchronized shifting in conventional forward gears. There is an automatic locking out of free wheeling when reverse gear is used. Free wheeling control will be located on the instrument panel.

Switch-key starter, which positively prevents stalling, will be included on all cars.

All motors will be cushioned in live rubber at all four points of suspension.

Wire wheels, with wide chromium hub caps, will be standard

equipment.

"These are mechanical features typical of the \$1000-and-up group," said Mr. Graham. "But they are available in the Rockne Six at the list price."

Aerodynamic bodies, designed by famous American body artists and scientifically moulded from front fender to tail light to reduce wind resistance and increase speed, provide a custom-salon beauty for the Rockne Six.

Sloping radiators, artistically outlined with chromium, sloping windshield controlled by chromium plated hardware, bald head-panels and streamlined tops and air-floot apron, concealing the fuel tanks, are distinct Rockne Six features.

Interiors have been designed to provide abundant room for even the largest passengers.

Honor Roll For Heights Announced

SALEM HEIGHTS, Dec. 5.—The Salem Heights grade school pupils who made an average of 90 per cent or above for the first quarter of the year and are therefore listed on the honor roll are as follows: First grade: Nadine Gosnell, Walter Bowman, Charles Beardsley, Jimmy Rogers and Lily Papelpu. Second Grade: Wendell Trudgen, Jean Gorton, Ronald Burgess and Arline Hicks.

Fifth Grade: Allen Bartlett and Lois Douglas. Sixth Grade: Catherine Zinser, Alida Mae Sauter, Eunice Wright. Seventh Grade: Florence and Francis Ball, Orville Beardsley, Betty Biles, Muriel Robinson, Edgar Fortner, Lillian Berg. Eighth grade: Isabelle Bothwell, Mildred Oakes and Lorraine U'Rena.

Mrs. Bortha Singletary, of Lumberton, N. C., has made enough money from a 19-acre farm to send four children to college.

Jewelry

The Most Appreciated GIFT

Buy Here and Save

H. F. Shanks
325 State St.



Make This The Ideal Christmas GIVE ELECTRICAL GIFTS



COFFEE URN SETS

Delightful coffee urn sets that Mother will be so very glad to receive. In beautiful nickel and chrome plate, these sets are ornamental as well as extremely useful and at prices that will please you.



WAFFLE IRONS

Waffle irons which will quickly prepare that favorite breakfast dish. An iron that will not be out of place when serving right at the table. As low as \$7.45.

WHAT better way to make the Yuletide gay and cheerful than to give gifts that are really useful — ones that carry the suggestion of the Christmas spirit throughout the whole year. Such gifts are doubly appreciated.

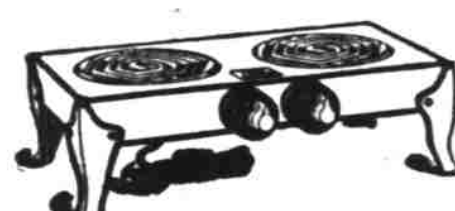
Electric Toasters

Electric toasters in automatic and non-automatic styles. A gift that the whole family will appreciate. As low as \$3.50.



Two Burner Hot Plate

Single and double hot plates in all sizes that are extremely handy for auxiliary cooking. Long life, attractive finish. As low as \$5.00.



Gifts That Keep Christmas Alive the Whole Year 'Round



Handy Electric Irons \$4.95 to \$6.80

The new automatic iron—the easiest iron to use. Undoubtedly a leader, the automatic makes ironing easier by eliminating the necessity of watching iron heat.



Mix-Master Sets \$22.50

Mix-Master sets will find themselves a permanent place in the kitchen scheme of things. For beating and mixing all sorts of dishes. You can prepare delightful fruit drinks, too, with this handy article.



Electric Cooker Sets \$7.15 to \$8.00

Everhot cookers will prepare electrically meals for from two to six people at very little cost. A wonderful set to use in connection with your electric range.



Mazda Lamps

For efficient and decorative lighting of the home, Mazda lamps are really without a peer. A gift to give the home itself. Buy them by the box and make your Christmas dollar go farther.

Make This an Electrical Christmas

PORTLAND GENERAL ELECTRIC CO.
LIGHT PEPCO POWER

GIFTS FOR THE HOME

Here are just a few of the outstanding values in our line of Christmas gifts for the home. Remember, a gift for the home is a gift for the family,—you know it will be welcomed.

Smokers - End Tables - Occasional Tables - Tray Tables

SMOKERS

Beautiful Cabinet Smoker. 12 x 16 inch cabinet, full copper lined humidor, burrled maple pannelled front, complete with black and silver smoking set. Specially priced at \$9.95.

Extremely beautiful cabinet smoker, 12 x 24 inch top, copper lined humidor. End compartment for books. Complete with silver and black smoking set. Specially priced \$10.50.

OCCASIONAL TABLES

Occasional tables, matched walnut and mahogany, beautifully inlaid.

\$13.50

USE OUR CONVENIENT TERMS

Folding Tray Tables

In a variety of finishes. This is an especially acceptable Christmas gift. Legs fold under table to make serving tray—unfolded it is a sturdy serving table.

Priced at \$8.95

End tables. Beautifully matched, burrled walnut tops, spoon turned legs.

\$3.75

Book trough, end tables in walnut.

\$3.50

Imperial Furniture Co.
467 Court Phone 8419

Give Him a **TIE**

FROM ALEX JONES

When you select his tie here you needn't be afraid that he won't wear your Christmas gift.

SNAPPY COLORS CHEERFUL DESIGNS HIGHEST QUALITY

Most Ties **95c**

Including the famous Cheney and Heineman Cravats. Others \$1.50

See the new Heineman Gift Set for men. It's a wonderful gift!

OPEN EVENINGS UNTIL CHRISTMAS

Alex Jones
Senator Hotel 276 N. High