

Wax Borders Make Brilliant Showing as Salem Bows to Fall Colors

OLDEST HOME BEING SOUGHT

Several Claims Advanced, But Certainty Lacking So far, Asserted

(Editor's Note: This is one of a series of stories prepared by the National Association of Real Estate Boards and published weekly in this newspaper for the information of its readers on real estate matters.)

Where is the oldest home in the United States? Is it hidden in the streets of some great city that has grown up around it, or is it standing in some quaint country town with old trees shading its doorway?

Is it the old Fairbanks home at Dedham, Mass., variously reported as the oldest and the second oldest residence still standing on this continent, is it the home of Paul Revere, is it the house of John and Priscilla Alden, or is it a home never known before?

The national association of Real Estate Boards wants to know. The association wants to locate the oldest home, and then to attempt to preserve it as a shrine dedicated to the ideals that are founded on home ownership. Herbert U. Nelson, executive secretary of the association thinks:

"American battle alms are marked because of their significance in American life. The birthplaces of American heroes are preserved to remind the public what these men did for our country. The desire for home ownership is an equal part in making America great. The longing for a bit of land drove men and women through the western wilderness. The wish to keep their homes has made men work on our farms, and in our factories and in our offices as they never would have worked otherwise."

"Unselfishness, thrift, ambition, love and progress have played their parts in American life because somebody wanted a home. It is for these reasons that the home owning movement has been encouraged. Our cities may grow larger and larger, our multi-family structures may pile story upon story, as they do even now, but we will always need the home, so we can always have the home owner."

Shrine Suggested

"I would like to see a shrine made of the oldest American home. Its very age would be bound to make it appealing. It would do more to sell home ownership than the words of the best salesman. I would like to see children make pilgrimages to it and there be imbued with the wish for their own hearths that will follow them throughout their lives."

The old Fairbanks home was built in 1636. It was occupied by lineal descendants of the family until 1903.

The house is built entirely of lumber and plaster except for the chimneys, door steps, and the old oak framing has achieved a rich, chocolate brown. It is believed that the timbers were originally ship timbers, very possibly having been made in England.

The Real Estate association asks that anyone knowing of a house as old or older than the Fairbanks structure, send a description of it to the association offices, 59 East Van Buren street, Chicago, where every effort to locate the most ancient residence will be made. Later the association plans to ask women's clubs, historical societies, and civic organizations to aid in preserving such a home. If such steps have not been taken, and to make it a home owning monument in any event.

PERENNIALS MUST BE MOVED OFTEN

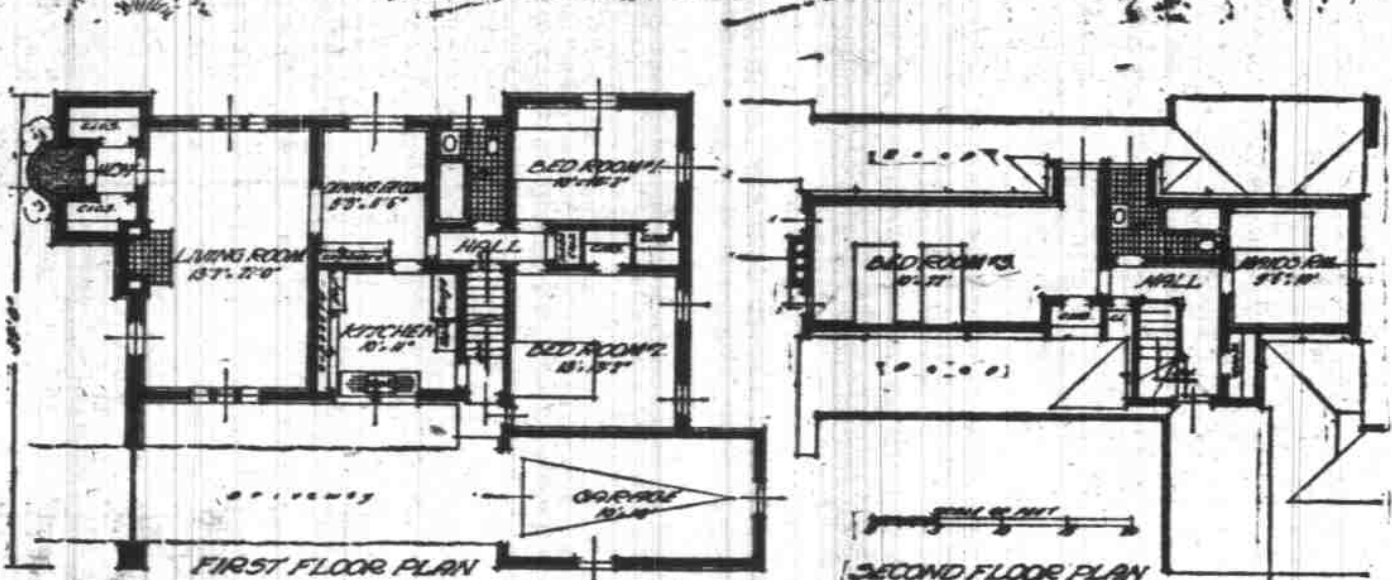
Home flower gardens which are made up of perennials must be moved or redesigned every two or three years in order to restore the vigor of the plant and give it a change of soil, according to J. T. Bregger, extension horticulturist, Washington state college.

The best time for this transplanting and rearrangement is in late summer or early fall when the plants are in a fairly dormant state. The plants should be carefully dug up, divided, and moved to their new location. If the fall rains have not already begun, they must be watered regularly for best results.

The digging and replanting of bulbs is another autumn occupation of the flower gardener. Most bulbs should be dug after the tops die down and stored in a cool place for four or five weeks or until time to replant. It is usually best to plant the bulbs until the fall rains have begun and the soil is in first class condition.

Beautiful effects can be secured in the perennial flower garden if the different varieties are carefully marked during the summer as to color and type of growth and then arranged in a harmonious design when they are replanted in the fall. In this way innumerable color combinations as well as other effects can easily be created.

AN INTERESTING HOUSE AND GARDEN UNIT



By R. C. HUNTER, Architect, New York

Editor's Note: A "Portfolio of 101 Small Homes" by R. C. Hunter, architect, is offered to readers for \$2.50. Send check or money order.

This charming one and one-half story English cottage with its attached garage has been designed to make the most of a 50 foot plot. The house, including the garage, measures 39 feet in width, allowing 11 feet for space at the sides.

The front wall of the house has been extended to include the driveway gates and pier. This treatment serves to give additional width to the house, as well as the much desired low rambling appearance. By planting a hedge between the driveway pier

Word has been received by friends of the death of Mrs. Ernest Brower at San Dumas, Cal. Mrs. Brower was formerly Miss Pearl Parth, daughter of Mr. and Mrs. J. Parth. The Parthes made their home for several years on what is now the T. Wallace farm. Mr. Brower is also well known here. He is a nephew of Mrs. J. F. C. Tekenburg of Macleay.

Mr. and Mrs. Glen Magee have rented the D. A. Harris home. Mr. Magee is employed in Salem and Mrs. Magee, who graduated from the Ashland Normal recently will teach at Oak Grove this year.

Mrs. Elwood Fegles and son of Eugene are guests of Mrs. Fegles' mother, Mrs. A. B. Richardson. Mrs. Fegles will be remembered as Viola Richardson.

Rod and Gun Order Might Plant Trout

AURORA, Sept. 12.—The Aurora Rod and Gun club is losing none of its enthusiasm in organization. The China pheasant pens, recently built on the property of Sam Miller, prove to be an increasing source of interest.

Fifty of the roosters given to the club to increase the supply of game birds in this vicinity have been released, and the club has received 50 more to bring the quota back to the original 250. The club is contemplating enlarging its interests, and considering the advisability of planting trout in the Pudding river.

HYETT VERY ILL

SILVERTON, Sept. 12.—Word has been received at Silvertown that J. W. Hyett, former Silvertown and Creswell banker, is seriously ill at the Veterans hospital at Oakland, Calif. He is suffering from a tumor on the brain. Mr. Hyett went to San Francisco three months ago.



CEDAR SHINGLES

still make the most practical and economical roofs. You can apply them over your old roof without removing the wornout shingles, saving time and money at the same time. Let us show you how it is done and why it makes the best roof.

Telephone 6627 before you buy your new roof and one of our experienced salesmen will be glad to come out and help you with your estimate.

J. W. Copeland Yards

West Salem

Tel. 6627

Don't wait for a rainy day to shingle your home!

IT COSTS LESS TO REROOF NOW

CELESTIAL SHINGLES

still make the most practical and economical roofs. You can apply them over your old roof without removing the wornout shingles, saving time and money at the same time. Let us show you how it is done and why it makes the best roof.

Telephone 6627 before you buy your new roof and one of our experienced salesmen will be glad to come out and help you with your estimate.

J. W. Copeland Yards

West Salem

Tel. 6627

Don't wait for a rainy day to shingle your home!

IT COSTS LESS TO REROOF NOW

CELESTIAL SHINGLES

still make the most practical and economical roofs. You can apply them over your old roof without removing the wornout shingles, saving time and money at the same time. Let us show you how it is done and why it makes the best roof.

Telephone 6627 before you buy your new roof and one of our experienced salesmen will be glad to come out and help you with your estimate.

J. W. Copeland Yards

West Salem

Tel. 6627

Don't wait for a rainy day to shingle your home!

IT COSTS LESS TO REROOF NOW

CELESTIAL SHINGLES

still make the most practical and economical roofs. You can apply them over your old roof without removing the wornout shingles, saving time and money at the same time. Let us show you how it is done and why it makes the best roof.

Telephone 6627 before you buy your new roof and one of our experienced salesmen will be glad to come out and help you with your estimate.

J. W. Copeland Yards

West Salem

Tel. 6627

Don't wait for a rainy day to shingle your home!

IT COSTS LESS TO REROOF NOW

CELESTIAL SHINGLES

still make the most practical and economical roofs. You can apply them over your old roof without removing the wornout shingles, saving time and money at the same time. Let us show you how it is done and why it makes the best roof.

Telephone 6627 before you buy your new roof and one of our experienced salesmen will be glad to come out and help you with your estimate.

J. W. Copeland Yards

West Salem

Tel. 6627

Don't wait for a rainy day to shingle your home!

IT COSTS LESS TO REROOF NOW

CELESTIAL SHINGLES

still make the most practical and economical roofs. You can apply them over your old roof without removing the wornout shingles, saving time and money at the same time. Let us show you how it is done and why it makes the best roof.

Telephone 6627 before you buy your new roof and one of our experienced salesmen will be glad to come out and help you with your estimate.

J. W. Copeland Yards

West Salem

Tel. 6627

Don't wait for a rainy day to shingle your home!

IT COSTS LESS TO REROOF NOW

CELESTIAL SHINGLES

still make the most practical and economical roofs. You can apply them over your old roof without removing the wornout shingles, saving time and money at the same time. Let us show you how it is done and why it makes the best roof.

Telephone 6627 before you buy your new roof and one of our experienced salesmen will be glad to come out and help you with your estimate.

J. W. Copeland Yards

West Salem

Tel. 6627

Don't wait for a rainy day to shingle your home!

IT COSTS LESS TO REROOF NOW

CELESTIAL SHINGLES

still make the most practical and economical roofs. You can apply them over your old roof without removing the wornout shingles, saving time and money at the same time. Let us show you how it is done and why it makes the best roof.

Telephone 6627 before you buy your new roof and one of our experienced salesmen will be glad to come out and help you with your estimate.

J. W. Copeland Yards

West Salem

Tel. 6627

Don't wait for a rainy day to shingle your home!

IT COSTS LESS TO REROOF NOW

CELESTIAL SHINGLES

still make the most practical and economical roofs. You can apply them over your old roof without removing the wornout shingles, saving time and money at the same time. Let us show you how it is done and why it makes the best roof.

Telephone 6627 before you buy your new roof and one of our experienced salesmen will be glad to come out and help you with your estimate.

J. W. Copeland Yards

West Salem

Tel. 6627

Don't wait for a rainy day to shingle your home!

IT COSTS LESS TO REROOF NOW

CELESTIAL SHINGLES

still make the most practical and economical roofs. You can apply them over your old roof without removing the wornout shingles, saving time and money at the same time. Let us show you how it is done and why it makes the best roof.

Telephone 6627 before you buy your new roof and one of our experienced salesmen will be glad to come out and help you with your estimate.

J. W. Copeland Yards

West Salem

Tel. 6627

Don't wait for a rainy day to shingle your home!

IT COSTS LESS TO REROOF NOW

CELESTIAL SHINGLES

still make the most practical and economical roofs. You can apply them over your old roof without removing the wornout shingles, saving time and money at the same time. Let us show you how it is done and why it makes the best roof.

Telephone 6627 before you buy your new roof and one of our experienced salesmen will be glad to come out and help you with your estimate.

J. W. Copeland Yards

West Salem

Tel. 6627

Don't wait for a rainy day to shingle your home!

IT COSTS LESS TO REROOF NOW

CELESTIAL SHINGLES

still make the most practical and economical roofs. You can apply them over your old roof without removing the wornout shingles, saving time and money at the same time. Let us show you how it is done and why it makes the best roof.

Telephone 6627 before you buy your new roof and one of our experienced salesmen will be glad to come out and help you with your estimate.

J. W. Copeland Yards

West Salem

Tel. 6627

Don't wait for a rainy day to shingle your home!

IT COSTS LESS TO REROOF NOW

CELESTIAL SHINGLES

still make the most practical and economical roofs. You can apply them over your old roof without removing the wornout shingles, saving time and money at the same time. Let us show you how it is done and why it makes the best roof.

Telephone 6627 before you buy your new roof and one of our experienced salesmen will be glad to come out and help you with your estimate.

J. W. Copeland Yards

West Salem

Tel. 6627

Don't wait for a rainy day to shingle your home!

IT COSTS LESS TO REROOF NOW

CELESTIAL SHINGLES

still make the most practical and economical roofs. You can apply them over your old roof without removing the wornout shingles, saving time and money at the same time. Let us show you how it is done and why it makes the best roof.

Telephone 6627 before you buy your new roof and one of our experienced salesmen will be glad to come out and help you with your estimate.

J. W. Copeland Yards

West Salem

Tel. 6627

Don't wait for a rainy day to shingle your home!

IT COSTS LESS TO REROOF NOW

CELESTIAL SHINGLES

still make the most practical and economical roofs. You can apply them over your old roof without removing the wornout shingles, saving time and money at the same time. Let us show you how it is done and why it makes the best roof.

Telephone 6627 before you buy your new roof and one of our experienced salesmen will be glad to come out and help you with your estimate.

J. W. Copeland Yards

West Salem

Tel. 6627

Don't wait for a rainy day to shingle your home!

IT COSTS LESS TO REROOF NOW

CELESTIAL SHINGLES

still make the most practical and economical roofs. You can apply them over your old roof without removing the wornout shingles, saving time and money at the same time. Let us show you how it is done and why it makes the best roof.

Telephone 6627 before you buy your new roof and one of our experienced salesmen will be glad to come out and help you with your estimate.

J. W. Copeland Yards

West Salem

Tel. 6627

Don't wait for a rainy day to shingle your home!

IT COSTS LESS TO REROOF NOW

CELESTIAL SHINGLES

still make the most practical and economical roofs. You can apply them over your old roof without removing the wornout shingles, saving time and money at the same time. Let us show you how it is done and why it makes the best roof.

Telephone 6627 before you buy your new roof and one of our experienced salesmen will be glad to come out and help you with your estimate.

J. W. Copeland Yards

West Salem

Tel. 6627

Don't wait for a rainy day to shingle your home!

IT COSTS LESS TO REROOF NOW

CELESTIAL SHINGLES

still make the most practical and economical roofs. You can apply them over your old roof without removing the wornout shingles, saving time and money at the same time. Let us show you how it is done and why it makes the best roof.

Telephone 6627 before you buy your new roof and one of our experienced salesmen will be glad to come out and help you with your estimate.

J. W. Copeland Yards

West Salem

Tel. 6627

Don't wait for a rainy day to shingle your home!

IT COSTS LESS TO REROOF NOW

CELESTIAL SHINGLES

still make the most practical and economical roofs. You can apply them over your old roof without removing the wornout shingles, saving time and money at the same time. Let us show you how it is done and why it makes the best roof.

Telephone 6627 before you buy your new roof and one of our experienced salesmen will be glad to come out and help you with your estimate.

J. W. Copeland Yards

West Salem

Tel. 6627

Don't wait for a rainy day to shingle your home!

IT COSTS LESS TO REROOF NOW

CELESTIAL SHINGLES

still make the most practical and economical roofs. You can apply them over your old roof without removing the wornout shingles, saving time and money at the same time. Let us show you how it is done and why it makes the best roof.

Telephone 6627 before you buy your new roof and one of our experienced salesmen will be glad to come out and help you with your estimate.

J. W. Copeland Yards

West Salem

Tel. 6627

Don't wait for a rainy day to shingle your home!

IT COSTS LESS TO REROOF NOW

CELESTIAL SHINGLES

still make the most practical and economical roofs. You can apply them over your old roof without removing the wornout shingles, saving time and money at the same time. Let us show you how it is done and why it makes the best roof.

Telephone 6627 before you buy your new roof and one of our experienced salesmen will be glad to come out and help you with your estimate.

J. W. Copeland Yards

West Salem

Tel. 6627

Don't wait for a rainy day to shingle your home!

IT COSTS LESS TO REROOF NOW

CELESTIAL SHINGLES

still make the most practical and economical roofs. You can apply them over your old roof without removing the wornout shingles, saving time and money at the same time. Let us show you how it is done and why it makes the best roof.

Telephone 6627 before you buy your new roof and one of our experienced salesmen will be glad to come out and help you with your estimate.

J. W. Copeland Yards

West Salem

Tel. 6627

Don't wait for a rainy day to shingle your home!

IT COSTS LESS TO REROOF NOW

CELESTIAL SHINGLES

still make the most practical and economical roofs. You can apply them over your old roof without removing the wornout shingles, saving time and money at the same time. Let us show you how it is done and why it makes the best roof.

Telephone 6627 before you buy your new roof and one of our experienced salesmen will be glad to come out and help you with your estimate.