

OREGON LAMB AND WOOL MOVE

Slight Increase Noted Over 1930; Ranges now in Poor Condition

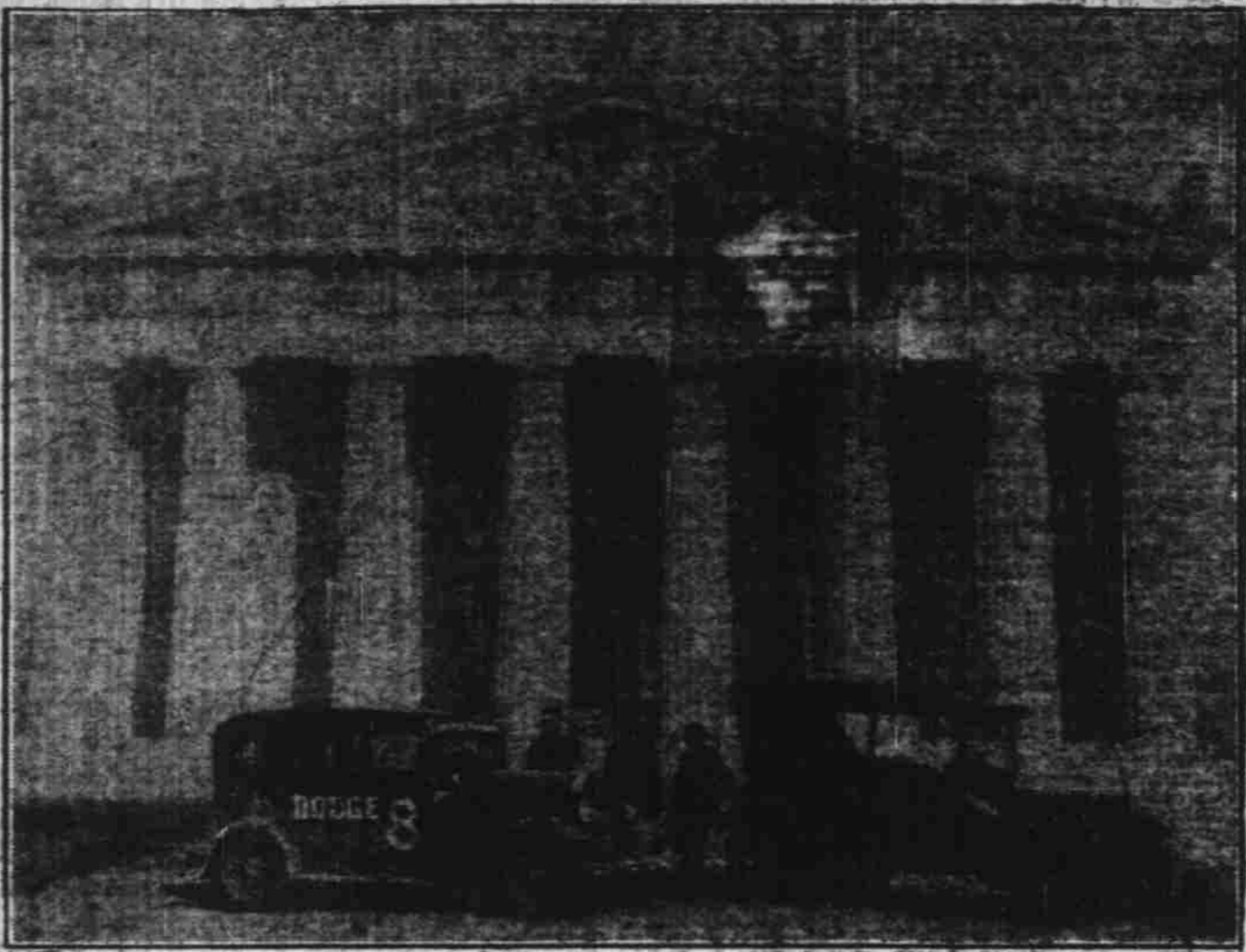
Oregon's total wool clip of 22,914,000 pounds represents, according to the Division of crop and livestock estimates, an average fleece weight of 2.0 pounds from 2,546,000 head of sheep shorn. This fleece weight is the same as that of last year whereas practically all of our reports indicate a heavier fleece than a year ago.

The total wool produced in the 13 states comprising the Western Range Area amounts to 274,536,000 pounds, it is estimated, which compares with the 1930 estimate of 247,734,000 pounds. The average fleece weight for the entire inter-mountain area is 2.36 pounds compared to 2.30 pounds last year. Only four states in this region, Montana, Wyoming, Idaho and Washington, report a higher average fleece weight this year than in Oregon.

Lamb Crop In Oregon this season 1,931,000 lambs have been docketed representing a 22 percent increase from the 2,099,000 breeding ewes estimated on farms at the beginning of the year compared to 90 percent last year and 60 percent in 1929. As a result of the larger percent increase, as well as the larger number of ewes bred, the lamb crop in 1931 exceeds by almost 200,000 the lamb crop in 1930 which was in turn 225,000 larger than the 1929 crop. Similar increases have occurred in all of the western range area with the single exception of Utah. The total western lamb crop amounts to 3,000,000 more than in 1930. Losses between docking and marketing usually run between four and five percent.

An unusually favorable, mild winter and lambing season was experienced in Oregon with the result that ewes were generally in good condition for lambing and lamb losses were low. In some sections a higher percentage of dry ewes resulted from the larger proportion of old ewes bred but this was much more than offset by the more favorable lambing conditions. These unusually favorable factors coupled with lar-

MARATHON RUN BRINGS 2 FAMOUS CARS TOGETHER



Pictured above with the Dodge Mileage Marathon car is the first Dodge Brothers motor car ever sold. It belongs to N. P. Giles, who purchased it in 1914 from the Cumberland Motor Company, Nashville. It was built November 14, 1914. In the sixteen years that have elapsed, this car has run unknown thousands of miles for the speedometer is of the early type with recordings up to only 10,000 miles. The Marathon car, a 1900 product, has traveled more than 55,000 miles since July 1. It took the 1914 model more than six years to register the same mileage that the Marathon car has registered in less than five months. Giles, the owner (right) is pictured with the driver (center) and Ray Priest (left) official observer of the A. A. A. Contest Board. The background for the picture is the only remnant of the old Parthenon at Athens.

ger numbers of breeding ewes on hand as a result of market conditions have combined to produce a lamb crop which is 23 percent larger than the 1929 crop. The early lamb crop has not increased in the same ratio, although there were 50 percent more early lambs this year compared with 1929.

Sheep losses, principally ewes, the first half of the year are estimated considerably higher than for the same period last year but it is extremely doubtful if this is true. However, with the exception of three states, Arizona, Nevada, and Texas, all of the 13 western range states show increased losses of sheep during the period January to July, 1931, as against the similar period last year.

Range is Dry In the western states the summer range situation is now much different than it was a year ago.

Drouth conditions prevail in much of the territory west of the Continental divide. In most of Montana, while water and food shortages are beginning to show up through Wyoming, South Dakota, and in the southern Rocky Mountain sections. In Texas, New Mexico, and Arizona, grazing conditions are very good. Subnormal rainfall and hot weather are causing rapid deterioration of range feed on much of the high mountain ranges, while acute conditions are reported in many localities of the Great Basin area. It is quite probable that these conditions will result in early and rapid movement of many of the range lambs, and this is already partially noted in the heavy movement already taking place from some intermediate areas.

The fall movement apparently will be hastened all through the season, and reports from stockmen indicate that the total movement will be fairly heavy and will contain more feeder lambs than usual. Losses of sheep up to June were generally light throughout the western area this year. Water and feed shortages will likely result in heavier than normal lamb losses in numerous localities so that the lambs available for market will be somewhat reduced by this situation.

The same situation prevails now as a year ago with very few lambs under contract for late summer and fall deliveries, and the activities of lamb buyers at this time are very limited.

STUDEBAKER HAS GAIN IN EARNINGS

The net profits of The Studebaker Corporation and subsidiary companies, after reserve for Pierce-Arrow minority stockholders' interest, for the quarter ending June 30, 1931, were \$1,219,605.30 as compared with \$915,274.96 last year, a gain of \$304,330.34, or 33 per cent. The amounts remaining for Studebaker Common, after preferred dividends, were 56c per share this year as against 41c last year. Net profits for the first half, were \$2,029,354.97 this year as compared with \$2,358,702.17 last year. These provided \$1c and \$1.03 respectively, for the common stock.

Sales in this year larger in the second quarter than they were last year, but the amount of sales was 15.6 per cent less. This means of course, that our ratio of net profits to sales was considerably better in the current quarter, the result of economies effected in the meantime. In addition, larger reserves and absorptions were deducted from earnings this year.

A tobacco grading school was held at North Carolina state college this spring for buyers, graders and farmers.

A Wisconsin farmer has been offered \$500 for an 1822 half-dollar he found while plowing.

FOX FARM SAID PROFITABLE

German Fitch are Latest Additions to Stacey Stock

By PEARL SCOTT "Fox raising is a good side line for the general farmer, according to C. W. Stacey of the Stacey Fox Farm, located in the Liberty district.

In telling of his experience along this line Mr. Stacey says he began raising foxes in Vale in 1923. He began with a \$1500 pair of Silver Foxes and for five years he kept fox raising as an interesting side line for his stock ranch. Each year his foxes increased and keeping the best he moved, in 1929, to Liberty, where he built a modern home.

Speaking of the general habits and care of foxes the Staceys say that \$54 is an average price for pelts. They generally pit in November and December. For a one year old female a litter of six is considered excellent.

The food for foxes generally consists of 40 to 60 per cent meat, 20 to 40 per cent cereal and bread. They also eat vegetables, fruit, eggs and milk. The Stacey fox pens are in a prune orchard and this fruit is a part of the fox diet.

The Stacey farm has produced some very fine pelts, a picture of one having been published in the American Fur Breeder's Magazine, a St. Paul, Minnesota, publication.

One of the most interesting sights at the farm is Mrs. Stacey with a handful of raisins going through the pens and rewarding each fox with a few of these much prized bits.

Fox make great pets and "Prits" one of the rulers of the Stacey pens will beg for raisins in a most convincing manner.

Which Are Admitted? Visitors to the farm this summer are interested in a group of fitch, a fur bearing animal new to this territory. There are five adult German fitch and 17 kittens. The Staceys became interested in these at the Pacific International Stock show and secured some for breeding stock.

The fitch, like the ermine, martin and sable, belong to the weasel family. It has a long cylindrical body and produces a pelt of exceptional beauty. The orange under fur of the pelt is a pleasing contrast for the black guard fur and black fur ranks very high in durability.

The fitch originated in the Mediterranean region, was put in pens in Germany about 10 years ago and from there was brought to the United States only two years ago. The Stacey adult fitch came from Los Angeles last December and the first of June one female gave birth to 10 young and the other to nine. Two of the kittens died while still very small. The others seem husky and lively and evidently like the Oregon climate.

AIRPLANE VIEW OF OIL FLEET BASE



Unique airplane photo shows water terminal of General Petroleum at San Pedro, operating base for Standard Transportation Company (Socony) fleet. Storage tanks receive oil piped from fields and in turn pipe it to boats in minimum time and with minimum effort. Four Socony boats are shown at the terminal.

smaller quantities but in other places they have been successfully fed on table scraps. It has been estimated that a female and her litter can be fed on three dollars per year.

The fitch is a sturdy animal and is free from many animal diseases. If properly cared for they will live to be 10 or 15 years of age. In habits the fitch is very clean and orderly.

These queer animals make wonderful mothers. When the kittens are about two weeks old the mother will carry bread and milk in her mouth to her young. Mr. Stacey tells of an interesting experience with his fitch. It seems that the pens were quite close together and one day he heard a great commotion and rushed out to discover that two baby fitch had disappeared from one pen but upon investigation he found them in the other pen. One mother fitch had coaxed them away from their own mother.

The fitch litter ranges from six to 12 and there are two litters a year, usually. At birth the young are white. Their eyes do not open for five weeks but after this they grow rapidly and are generally full grown in 10 weeks. From this time on the fur develops and

USES GRAHAM CAR AT HOOVER DAM

A Graham special eight has won the distinction of being chosen by the engineers of the Six Companies, Inc., for exacting and arduous work on the extremely hot desert country surrounding Las Vegas, New Mexico, where the company will build the Hoover dam on the Colorado River. The \$49-

they are often ready for market at seven months. The pelts bring from seven to 12 dollars. The breeding stock costs about \$60 per pair. The Staceys are raising fitch for breeding purposes and not for pelts but believe that there is promising future for the fitch fur market.

There are 98 foxes on the Stacey ranch, 50 of them being silver foxes. The foxes are raised in pens and are generally full grown in 10 weeks. From this time on the fur develops and

000,000 contract recently awarded by the Six Companies covers the largest private construction job in all history.

H. J. Lawler, chairman of the construction committee, who made the purchase, was guided by three features of Graham construction not to be found in any other single make of car. They are the complete equipment of safety plate glass, the Graham synchronized four-speed transmission, and the cooling system, the latter of special importance in the broiling desert region where the Graham must work.

The water jacketing of all Graham engines completely surrounds the cylinder barrels over their entire length, all the way from top to bottom. The whole piston, from its head to the lower edge of the skirt, is always surrounded by water-cooled cylinder walls, even at the bottom of its stroke. This design not only assures adequate cooling of the cylinder walls and the piston, but permits of a closer running fit between pistons and cylinder walls and, even more important, gives uniform cooling and expansion of the entire cylinder block, preventing distortion of the block and misalignment of the bores.

Advertisement for Nash cars featuring an illustration of a man in a suit and a woman in a dress standing next to a car. Text includes 'LISTEN TO THE NASH PARADE OF PROGRESS and Max Bendis, Official Bandmaster of the Chicago 1931 World's Fair, and his Band, Coast-to-Coast, Tuesday Evenings over NBC Network, 9:00 Eastern Daylight Saving Time'.

Advertisement for the Nash 'Silenced' car. Text includes 'NEW NASH Just Announced, June 28th The "Silenced" Car because it is SOUND-PROOFED in Body and Chassis From \$795 to \$2025 : : : f. o. b. factory Unusually low delivered prices, \$1016 to \$2350'.

Advertisement for James H. Maden Co. Inc. Text includes 'James H. Maden Co. Inc. 365 N. Commercial Telephone 8590'.

Rebels Stopped As Manchurians Augment Troops

SHANGHAI, Aug. 1. (AP)—Heavily reinforced Manchurian troops of the nationalist government turned the tide of battle Friday and halted the march of rebel troops northward toward Peiping and Tientsin.

Troops which arrived by train from Peiping stopped Thursday's retreat of 59,000 comrades and charged forward, recovering positions lost north of Poaiing, Chihli province.

General Shih Yu-San, rebel commander, however, rushed more troops into Peiping and the battle may rage several days before decided.

All Large Fires Controlled Now

SPOKANE, Wash., Aug. 1. (AP)—Major Ewan Kelly, regional forester, said Friday that all important forest fires were under control.

The Deer creek conflagration, largest single fire in the northwest since 1910, was ringed round with trenches on an 80 mile front and foresters were "mopping up" scattered blazes.

Farmers Pleased With New Market

WEST STAYTON, August 1.—Growers who are in the Salem Farmers Market report making better profits as they have more home products now.

Siring beans have been ready for some time and tomatoes will soon be ready as they are ripening now.

LADINO IS TRIED INDEPENDENCE, August 1.—The Oregon Milling and Warehouse company, have 16 acres in Ladino clover, on its dairy ranch, one mile northwest of Independence, and plans are made for the irrigation of it. The ranch has been operated under lease by the Displeased dairy. It will be taken over by the company this fall, and operated as a dairy project.

Advertisement for Banff Springs Hotel. Text includes 'WANT TO FEEL YOUNG? GO UP! Banff SPRINGS HOTEL IN THE CANADIAN ROCKIES'.



Advertisement for Canadian Pacific. Text includes 'EVER tried altitude on a sea-level constitution? It's a cocktail where you need it most, and a whole course of beauty treatments... Golf isn't a game, it's an epic—a mile-high, \$350,000 course, bent grass greens, blue grass fairways—and a \$100,000 clubhouse at the 19th hole... Two championship swimming pools—fine red tennis courts—saddle horses—Swiss guides for Alpine motor trips to Chateau Lake Louise—orchestra that make a hard-earned bachelor go romantic... Here's a summer center you couldn't exhaust in fifty summers! Bring your family—stay the season. Low Summer Rail Rates make your trip economical! CANADIAN PACIFIC W. H. DRACON, GEN'L AGENT PASSEY DEPT. 102-A Broadway, American Bldg. 10th Floor, New York, N.Y. Complete Pacific Travelers' Bureau'.

Large advertisement for Seiberling tires. Text includes 'SEIBERLING Together with 5,000 INDEPENDENT MERCHANTS We Bought 100 Carloads Think of famous quality Seiberlings at mail-order, chain-store prices. Joining hands with 5,000 other independent merchants throughout America—we have bought 100 carloads of Standard Seiberling tires at tremendous savings. We save. You save. Remember—these are quality tires—Seiberlings—guaranteed for life. Come in now. See. Compare. Convince yourself that here is the greatest tire value ever offered. REGULAR STANDARD SEIBERLINGS At Mail-Order, Chain-Store Prices CARL HULTENBERG Front and Center Streets "near East end of Marlon-Polk County Bridge"'