

**NEW DURANT CAR
BEING DISPLAYED**

New Lines, Continental Motor, Steeldraulic Brakes Feature car

Answering the demand of the times for greater dollar value in commodities, Durant has produced the Model 619—a 4-door, 6-passenger, 6-window sedan with a new distinctive lines and an entirely different motif in radiator design. The Durant-built body is mounted on a double drop frame, with 109-inch wheelbase.

In presenting this latest addition to the Durant line, George H. Moriarty, vice-president and general manager of the Durant Motor company of California, offers the following descriptive data:

"Quite in keeping with the low streamlines of the exterior, the newest Durant model has a smartly tailored interior, suggesting a selling price considerably above the one it actually bears.

"Fine texture upholstery covers wide, deep-cushioned seats. A graceful instrument board and artistic finishings lend a touch of refinement that will be a source of constant satisfaction to owners.

"All bright finished exterior hardware is chromium plated. There are single bar bumpers front and rear. Riding ease is enhanced by hydraulic two-way shock absorbers.

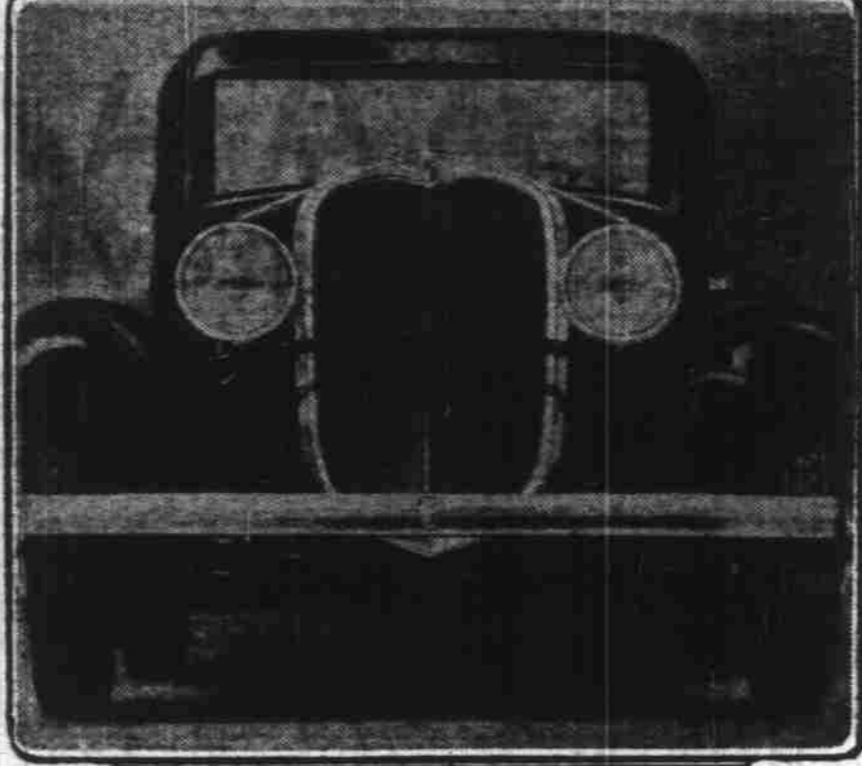
"Owners will also revel in the boast-inspiring performance of this new motor car. The power plant is a 71-H. P. Continental motor, capable of developing speed of from 75 to 80 miles an hour. Steeldraulic 4-wheel brakes insure control."

Standard equipment includes the following: temperature indicator, gasoline gauge, speedometer, ammeter, oil gauge, pull controls for spark, throttle and choke, coincidental ignition and coil lock, foot operated headlight control, rear view mirror, automatic windshield wiper, front and rear bumpers, hydraulic two-way shock absorbers, air cleaner, oil filter. The chassis is lubricated through zerk fittings.

Model 619 Durants are now on display at the local Durant dealer showrooms at the Salem Automobile company.

A polo league is being organized in the lower Rio Grande valley section of Texas.

DURANT OFFERS NEW MODEL LIGHT SIX



Above: Side view, showing low stream lines and presenting the appearance of a much costlier car. Right: Front view, exhibiting new motif in radiator design.

**Auto Exports
Show Big Gain**

Graham-Paige Motors corporation reports a gain of 90 per cent in export shipments in May as compared with April. It was the largest month for Graham exports since May, 1930.

June is expected to show continued activity, for the company announces that orders are now being received from overseas countries that have not been buying cars in recent months, notably Spain, Mexico, Panama, Uruguay, China and India.

The recent introduction of the Graham Prosperity Six has had considerable effect in improving Graham sales abroad. Sales have increased in Holland, Belgium, Norway, Switzerland, Turkey, Java, South Africa, Japan and the Philippine Islands.

**EXTEND ELECTRIC SERVICE
WACONDA, June 20**

The current was recently turned on in this vicinity by the Yamhill Electric company and those families enjoying the service are J. E. Sharf, William McGilchrist, A. W. Nusom, C. H. Hannegan, F. R. Nusom, B. J. Miller, Fern Run-corn, W. R. Palmer, George Brown, Karl Brown service station and Arthur Goffin.

VISIT COTTAGE GROVE

ZENA, June 20—Mrs. Clarence L. Merrick and two children, Chester and Audrey, of Zena accompanied her sister, Mrs. T. L. Burbee and two sons, Lewis and Gordon, of Portland, when they drove to Cottage Grove Thursday for an overnight visit at the home of Mr. and Mrs. M. Holdredge, parents of Mrs. Merrick and Mrs. Burbee. Lewis Burbee remained for his summer vacation with his grandparents but the others in the party returned

to Zena Friday evening where Mrs. Burbee and son, Gordon, spent the night at the Clarence L. Merrick home, returning to Portland Saturday.

GO TO IDAHO

TURNER, June 20—Mr. and Mrs. W. H. Harris, old residents of Turner, left a few weeks ago to make a leisurely visit, at Oxford, Idaho, which is their home town of 30 years ago, and as is natural, they notice changes on every hand.

**UNIMPROVED ROAD
MILEAGE IS CUT**

1931 is Biggest Year in Improving of Highways Of Oregon

The accompanying chart prepared by the Oregon State Motor association shows gradually the progress in state highway improvement since November 30th, 1924. At that time there were over 1300 miles of unimproved road on the state highway system. At that time also Oregon was just entering into its program of road building.

In the six years following, Oregon had reduced the unimproved mileage to 339 miles and up until December 31 of last year we had oiled approximately 40 per cent of our entire highway mileage—a total of 1894 miles.

This year (1931) is Oregon's biggest year in highway improvement and through the medium of increased Federal appropriation we will make more progress in highway construction than in any previous year.

There have been approximately 300 miles of roads improved each biennium since 1924—a total of 979 miles in the six year period.

The graded but unsurfaced sections of the accompanying chart show that the Highway Commission has kept surfacing projects in line with new construction, as during the same six year period the graded but unsurfaced roads have only increased from 318 miles in 1924 to 405 miles at the end of 1930, a net increase of only 90 miles, while during the same period 979 miles were graded.

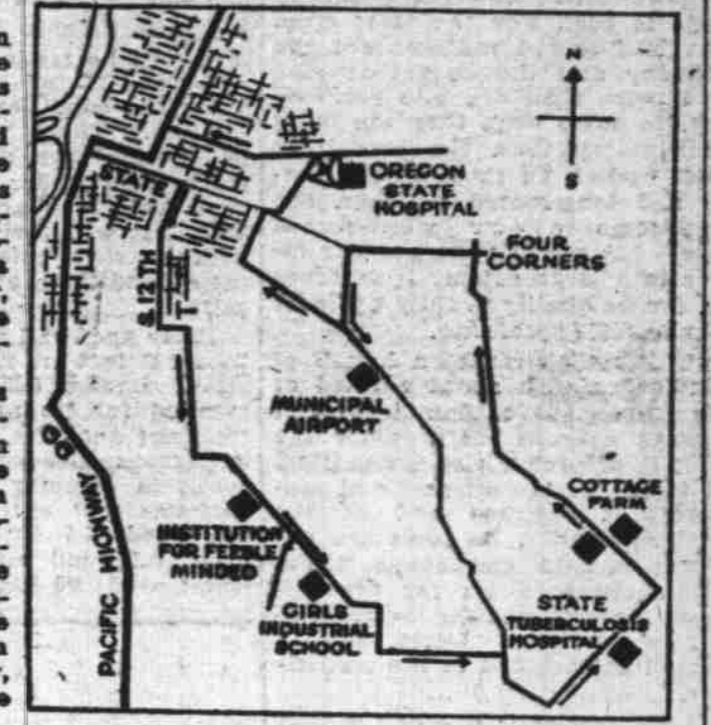
At the end of last year only 8 per cent of the state highway mileage remained unimproved and this figure will be materially reduced at the end of 1931.

Reconstruction and betterments have been carried on continuously during this period as is evidenced by the fact that in oiled roads alone, 40 per cent of the state highway system has been bettered. During this time our bonded indebtedness for state highways has been reduced approximately ten million dollars.

**State Institution Grounds
Points of Interest, Short
Tour in Vicinity of Salem**

For a short tour out of Salem, one with several really beautiful viewpoints, the trip around the state institution for the feeble minded and the state industrial school for girls is recommended by the chamber of commerce.

Drive south on 12th street to the south city limits and then just follow the paved road. Note the well-kept grounds of the state institution for the feeble minded and a mile or so farther, to the right, the other state institution.



A few miles farther is the location known in past years as the boys reformatory school. And between these buildings and the state tuberculosis hospital is one of the loveliest views in Marion county, looking to the west.

When you arrive at the tuberculosis hospital, stop and view the scenery. In the distance to the west is the low range of the Coast range mountains. And the in-between country is one of the loveliest spots in the west.

Turning towards Salem is the Cottage farm, operated by the state where there will be erected new barns replacing those recently destroyed by fire.

Just before reaching Salem, you may turn to the south and visit the Salem airport. No city of its size in the northwest can boast of so well equipped an airport as Salem.

And returning to Salem, it may interest you to view to the north the state penitentiary and the seven large sheds devoted to the flax industry, in which the state has invested \$550,000.

If interested in the penitentiary you might as well know that it isn't as easy to get into as in

former years, unless you have done something that entitles you to free board.

If it is just idle curiosity, the guard at the gate on State street may decide that your time might be better spent. But if you have a friend inside and have some good reason for entering—well, that is different.

BANK OFFICE MOVED

AURORA, June 20—S. M. Laws, deputy superintendent of banks who is in charge of the liquidation of the Aurora State bank and the State bank of Hubbard is now located at the Hubbard bank building where he has moved his office. This move was made as a matter of economy and will reduce the expense of liquidation for both institutions.

Mrs. William Flich, former assistant cashier of the Aurora bank, will still be an assistant at the new location.

A food sale will be held June 20 at the Aurora meat market to raise funds for the work.

**ROAD IMPROVEMENT
BEING RUSHED**

WACONDA, June 20—Although handicapped by heavy showers the past week work on the new market road has progressed rapidly and it is expected that Friday or Saturday will see the finish.

On Wednesday of last week it was necessary to place detour signs on roads leading into Mission Bottom to keep travel away. Water covered the road in places and local health unit was done, which allowed work for a time.

A large crew of men are employed under the direction of Lee Wells. Fifteen teams are in use and also a caterpillar, patrol and three tractors. Tom Sellwood is handling the gravel from the Pierce Colliery plant.

HEALTH GROUP ELECTS

AURORA, June 20—At the annual election of officers for the local health unit to serve for the coming year, Mrs. A. L. Strickland was made president; Mrs. A. F. Knorr, vice president; Mrs. Walter Grim, secretary and treasurer. The small attendance was offset by the enthusiasm of those present. Many improvements were decided should be made in the health center rooms, including new curtains for the windows, floors painted, repairs to plumbing and water piped into the building.

A food sale will be held June 20 at the Aurora meat market to raise funds for the work.

MRS. E. LARSON DIES

HOPEWELL, June 20—Funeral services were held Monday afternoon from the Macy chapel at McKimville for Mrs. Emma Larson of Unionvale, who was born in Wisconsin, April 16, 1857. She is survived by two brothers, Ray Bernard and W. N. Bernard of Mountain View, Cal., and a niece, Mrs. Waldo Makers of Unionvale.

BUYS FARM

NORTH HOWELL, June 20—Tony Pfan has purchased the Leslie Dunn farm, just across from the North Howell school house. There are 45 acres in this farm and the house recently burned.

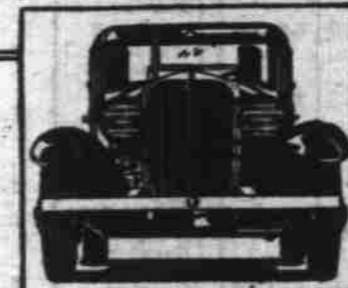
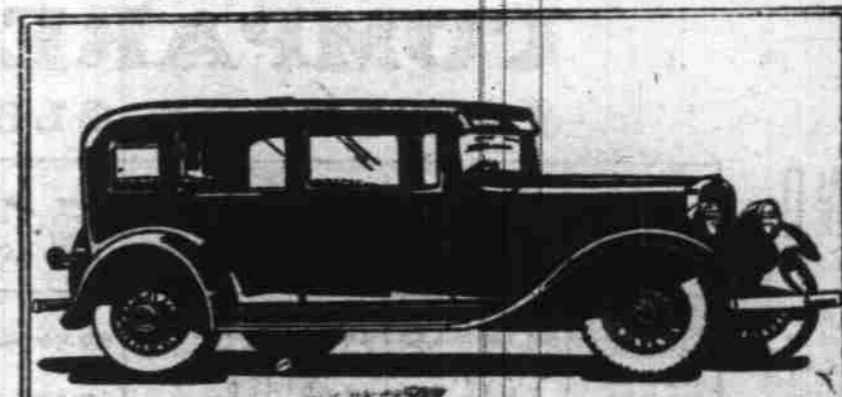
ANNOUNCEMENT



W. C. DURANT

You have often wished you could design a motor car to your own liking (Now we have done it for you. We have produced the new Durant 610—a model designed after thousands of owner suggestions (This new creation carries more of your own ideas than any other car built. Consider this: A five-passenger, four-door sedan . . . 71 H.P. six-cylinder Continental motor . . . 2711 pounds

weight (approximately 38 pounds to the horsepower) . . . Gear ratio 3.9 to 1 . . . Speed 75 to 80 miles an hour . . . Two-way shock absorbers. (Here is a motor car that will out-perform and out-last any other at or near its price . . . It's your car!



The low streamline body, Durant-built, strikes a new note in coach craftsmanship. Single bar front and rear bumpers are also included.

FURTHER DESCRIPTION: A generously proportioned interior; graceful, convenient instrument board; smartly tailored upholstery; deep, wide cushions; four wood wheels and spare rim, tire, tube and cover mounted on rear.

\$832.75 FULLY EQUIPPED TO YOU

A new motif in radiator design gives this model a striking appearance, and suggests a costlier car.

IN SALEM

Salem Automobile Company

435 N. Commercial

Telephone 4673

DURANT

Can you trust your present tires?



YOUR car is engineered to obey your command; only a product of rubber and cotton separates safety from disaster—your tires.

Can you trust them? Are they Safe? If they're Kelly-Springfields you can trust them, up to an advanced stage of their life. That is true of all Kellys. Kelly safety and quality cost no more, but they are worth more. Look at these prices for Kelly Lotta Miles Tires:

4-40x21 Only	4-50x21 Only	4-75x19 Only	5-25x21 Only
\$4.95	\$5.65	\$6.65	\$8.55

VALLEY MOTOR CO.

CENTER AND LIBERTY STS., SALEM, ORE.

CHARLES HAYNES
Triangle Service Station
Fairgrounds Road
Salem, Ore.

FRIEM & CASPELL SERVICE
25th at State Street
Salem, Ore.

O. "CHET" LINDLEY SERVICE
Court at Church St.
Salem, Ore.

SMITH & TOWNSEND SERVICE
STATION
Commercial at Center
Salem, Ore.

DOUGLAS MCKAY CHEVROLET
COMPANY
490 N. Commercial
Salem, Ore.