

# Building Activity Will Increase With Summer Season, Indicated

## LUMBER SUPPLIES LOWER THAN 1930

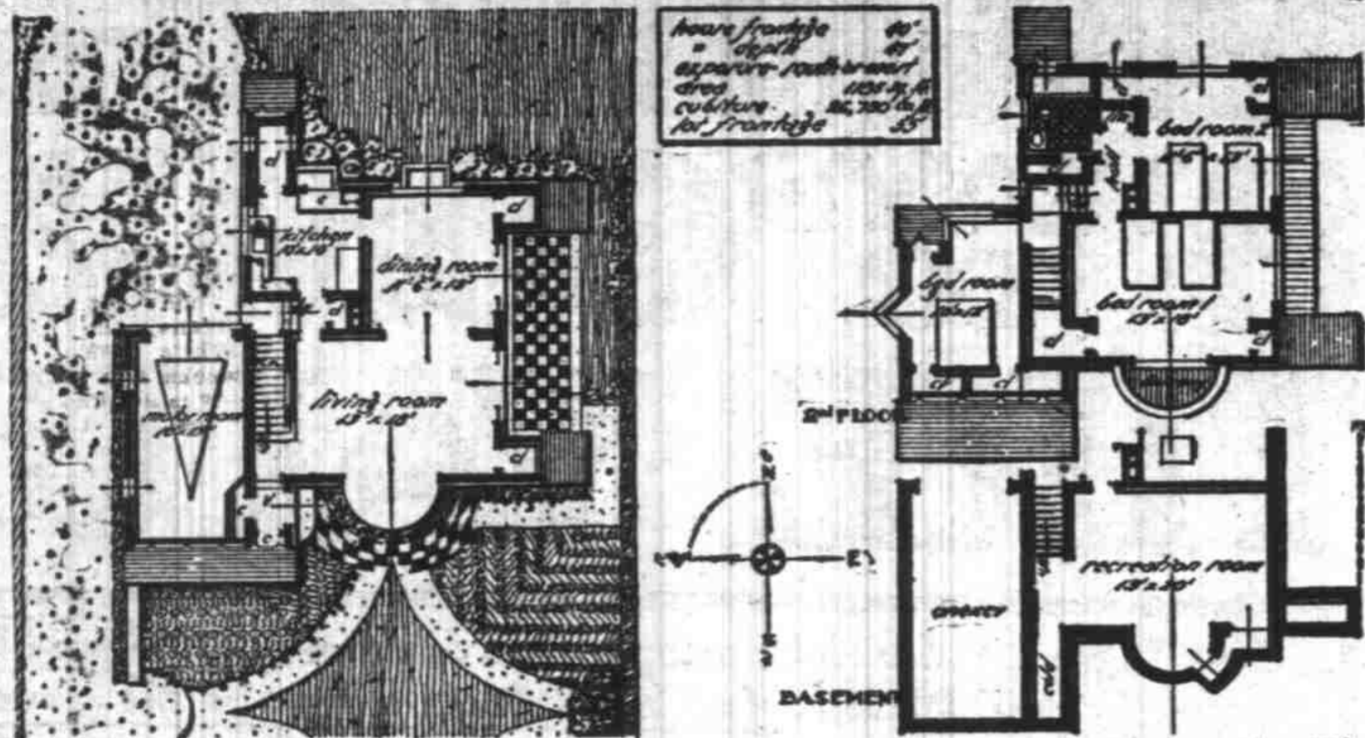
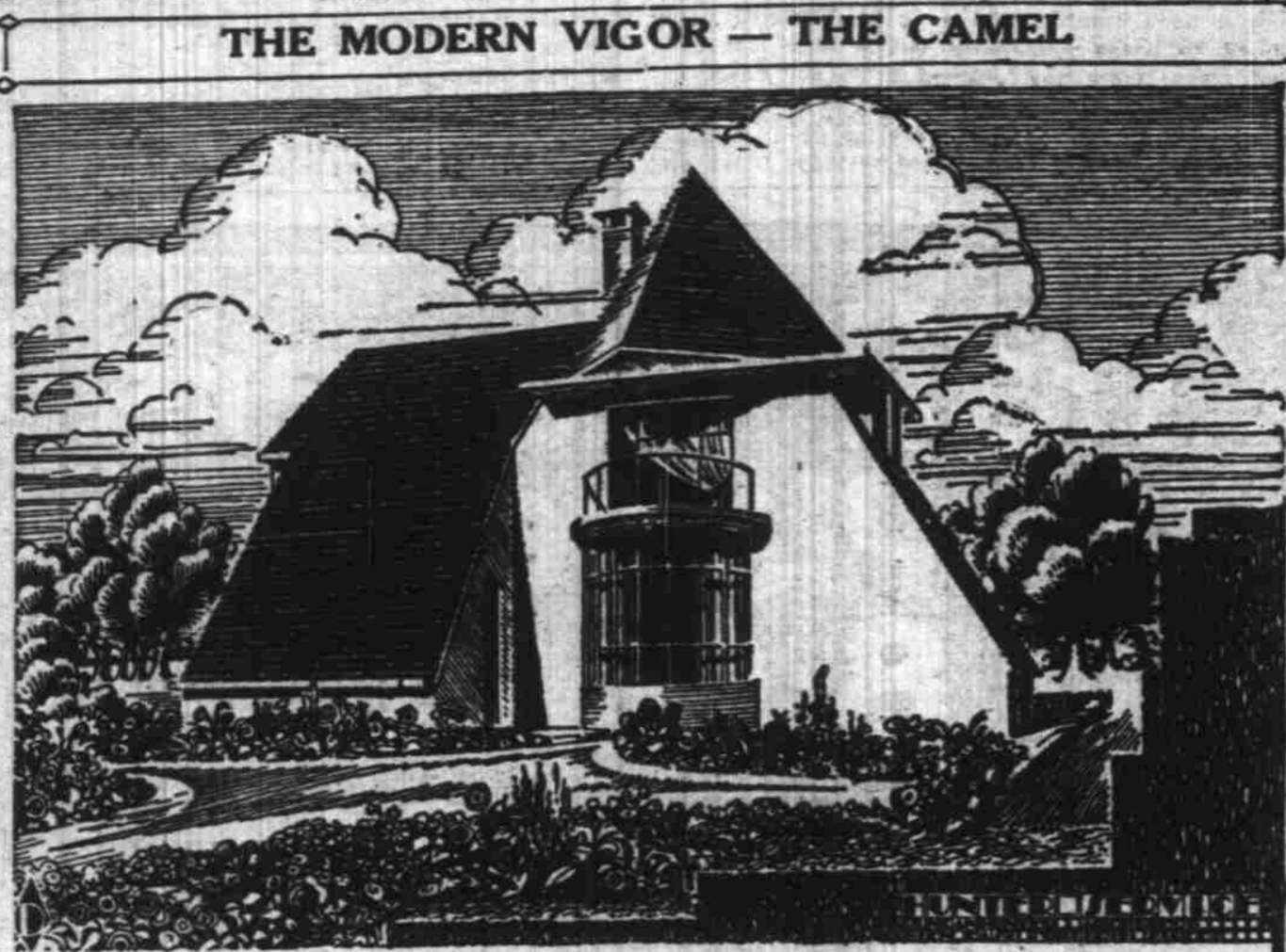
### Sawing Exceeds new Orders due to Slackening in Export Trade

SEATTLE—A total of \$41 million worth of lumber was reported to the West Coast Lumbermen's Association for the week ending May 2 operated at 44.73 per cent of capacity, as compared to 45.06 per cent of capacity for the preceding week and 69.57 per cent of capacity during the same week last year. For the first 17 weeks of 1931 these mills have operated at 40.34 per cent of capacity, as compared to 64.81 per cent for the same period in 1930.

Current new business reported by 221 identical mills was 4.25 per cent under production, and shipments were 13.86 per cent over. New rail trade business received during the week was about 1,360,000 feet more than the volume reported for the previous week; decrease of about 15,700,000 feet in the export trade and 3,300,000 feet in the domestic cargo trade were reported; while the local trade gained about 1,000,000 feet; making the total new business approximately 18,600,000 feet less than during the previous week and 7,000,000 feet less than during the second week previous. The heavy decline in export sales is due, in large part, to the generally depressed condition of world trade. During the past 22 weeks orders for 221 mills have averaged 11.75 per cent over production. Inventories are now lower than at this time last year, the Association stated, and unfilled orders are holding at about the equivalent of four week's production at current levels.

## Farmer Market Framework up

Framework for the farmer's market under construction at 356 North Liberty was nearing completion last week and farmers to occupy the booths are already being signed up. E. L. Gray is owner and builder of the structure.



**THE CAMEL**  
By DUNCAN HUNTER,  
Architect, New York  
Continental Europe, Norway,  
Sweden, Germany, Austria, Den-

mark, Belgium, France and even the staid or conservative British Isles are well on their way in the development of a new "Modern" style in architecture while America, except for the sky-

scraper type, lags far behind. This new, straightforward, and vigorous modern style has unlimited possibilities of development since it is not hampered with historic precedent or family

ties. Suitability is the keynote. A house as a house, to live in, a church as a place to worship, a shop for sales, an industrial plant for manufacturing and so on—first and always—and forget the architectural sugar-coat of useless ornament. Let good taste rule, Beauty follows fitness—it's got to come.

If we can't buck the tide we can go with it—and the modern way threatens to assume tidal proportions, and it is needed. If it wipes out some of the old it will do much good. A better Chicago arose from the ashes of a great fire, San Francisco came back after the earthquake and Florida after the hurricane.

What seems to be needed is continual change—it is the cycle of events. Even great disasters seem to be blessings in disguise. Standards of living change, so do ideals and theories, so do methods of transportation, all moves forward—yet architecture has been held back—we must go to the ancients—why?

The camel goes modern and here's how—  
The roof treatment, the wing walls sheltering the terrace the curved glass bay and balcony and the vigorous simplicity of the whole setup.

It schedules—  
Basement—a large recreation room, laundry, cold storage, heater and coal spaces.

First floor—entrance vestibule with two coat closets, living room, dining room, kitchen and a one car motor room. A paved terrace connects with both living room and dining room.

Second floor—three bedrooms, a bath and ample closets.  
Ceiling heights—basement seven feet, first floor, eight feet six inches, second floor—eight feet.

Exposure—the plans as shown are for a lot facing south or west. For a lot facing north or east the plans should be reversed.

Lot size—house frontage 40', side clearance, left—10' right 5', lot frontage, minimum 55 feet.

Construction—frame with stucco finish. Roof—slate. Foundation—concrete. Windows—steel casements in special arrangements, with integral screens.

**WOODWORKING**  
We specialize in all kinds of built-ins and drop work. Quick service.  
SHEARER WOODWORKING SHOP  
Res. Tel. 9518 1715 Baker St.

Doors—wood, to special details. Interiors—floors—wood for linoleum finish. Walls—plaster. Kitchen—plaster. Bath room—composition tile. Steam heat, gas and electric wiring.  
Cubature—26,750 cubic feet. Approximate cost \$8200.  
Complete working plans and specifications of this house are available for a nominal sum. Address the building editor and refer to House H-111.

**BACK TO CALIFORNIA**  
CLOVERDALE, May 9—Mr. and Mrs. Edward Huesing who have been visiting at the home of the latter's parents, Mr. and Mrs. W. Anderson for the past

**Hollywood Floor Co.**  
Expert floor work guaranteed. Let us refinish your writing desk.  
H. KROEPLIN  
Salem  
Tel. 8406 1180 Jefferson



**WATCH FOR VAN'S MOVES**

WE like to keep moving things around. We do it so well—our work is bound to please us. And it is bound to please you also. Ask anybody.

**CAPITOL CITY TRANSFER CO.**  
226 STATE ST.

two weeks left Thursday for their home in Ventura, Calif.

**ROAD IS IMPROVED**  
NORTH SANTIAM, May 9 — Road Patrolmen L. Walker has a

crew of men working the road from the I. R. Hammer place to North Santiam. The grading is finished ready to put the gravel on.

**Feel Safe and Secure**

A HEALTHY and growing savings or investment fund in this 20 year old institution gives one a mighty comfortable and independent feeling.

**\$ 6 a month guarantees you \$1000**  
**\$30 a month guarantees you \$5000**  
in 120 months!

No Selling Commissions or Other Charges!

**SAFETY** and **FREE BOOK BANK** with your first payment. Loose change dropped into this bank makes saving easy and painless.

A. A. LEE & R. STEINHAMMER

**MUTUAL SAVINGS & LOAN ASSOCIATION**  
SALEM  
344 State St.  
Tel. 4914

## A New Trick in PAINTING ECONOMY



You put 75c in the can . . . you take out big savings every year ANY HOME OWNER CAN DO IT!

THE secret of this trick, of course, lies in the Acme Quality House Paint can. You simply put 50c to 75c more per gallon into NEW ERA House Paint, as compared to ordinary house paint. You get 30% greater covering—therefore use fewer gallons. You get greater weather resistance. Therefore you get five years of service instead of three. In other words, NEW ERA House Paint costs less by the job by the year. And you have the superior colors and finish of an Acme Quality NEW ERA Paint job in addition. Let us submit the actual savings possible on your house. See these interesting economy figures before you buy any paint.

**ACME QUALITY HOUSE PAINT**  
COSTS LESS PER JOB PER YEAR

Salem Hardware Co.  
120 N. Commercial Tel. 4000

## How to Avoid Unpleasant Situations!

If you loan your money direct on FIRST MORTGAGES you have been faced with the unpleasant task of crowding JOHN DOE for your INTEREST—you have to watch his TAXES.—INSURANCE POLICIES must be watched.

And the SAD thing is that after doing all this, you get NO BETTER INCOME than your neighbor who lets

**Hawkins & Roberts, Inc.**  
look after these details. He INSPECTS his loans the same as you and has the further ADVANTAGE of MARKETABILITY.  
You may have full details at our office  
205 Oregon Bldg.

**NEUMAN**  
152 N. Com'l. Tel. 4484  
Paints & Varnish

**DECORATING**  
For the price of painting, call or phone for appointments. Interior or exterior painting at very reasonable prices. Calsomining or papering.

**B-H COLOR MAKES THE LITTLE GLAY HOME IN THE WEST**  
Here's protection—where B-H Paints are, decay and deterioration are not.  
See for yourself what we mean by "B-H Color." "Color Harmony in the Home, Booklet 2" illustrates homes painted in these modern, Western finishes. Write for it. Just send your name and address to the National Lead Company of California, 2240-24th Street, San Francisco. Then come to us for your paints.

B-H MIXED PAINTS—as colorful as a rainbow! Make them the "front" with which your home faces the world—gay not gray!  
Here's beauty—Cascade green, Yuma red, Del Monte gray are but a few of the colors you have to choose from.

**BASS HUETER MIXED PAINTS**  
MANUFACTURED BY  
NATIONAL LEAD COMPANY  
Makers also of the well known Dutch Boy and Carter brands of pure White Lead

**MOVING STORING CRATING**  
Larmer Transfer & Storage  
Phone 3131  
We Also Handle Fuel Oil and Coal

**DO YOUR SPRING REPAIRING EARLY—CALL SPAULDING'S**

"A broken step is as bad as a broken resolution. A fence that needs repairing seems to look like a beggar asking alms."  
—says Fracty Cal.

Let us supply you with material for the repairs to your home. We furnish the best grade cedar shingles, new kitchen cabinets and built-ins, window screens, paint, lumber, and general building needs. Consult Spaulding's before you begin your alterations.

Dial 4116

**CHAS. K. SPAULDING LOGGING CO.**  
Newberg Woodburn Douglas fir Lumber J. J. Millville Independence  
GENERAL OFFICE: 50 Northwestern National Bank Bldg., Portland, Ore.

**Electrical Contracting ALSO REPAIRING**  
Use Utmost Care in Determining Who Services Your Radio It Is Our Specialty and We Guarantee Our Work

**Halik Electric Co.**  
337 Court Telephone 4054

**READY-MADE SCREENS AND Wire Screening**  
Just Call 6627 and we will take care of your Screen needs—taking measurements—making them and delivering them to you.  
Now is the time to think of Keeping the Flies out

**J. W. Copeland Yards**  
West Salem Tel. 6627

**LUMBER**  
This season you can get the finest quality seasoned woods at prices that will make your purchase an investment. Build now . . . buy now . . . save now on all building materials.  
We can assure you prompt delivery at all times on large and small orders.

**GABRIEL Powder & Supply Co.**  
610 N. Capitol Telephones 9191 or 9192

**REPAIRING**  
Lattice Fence  
now to inclose your garden. Or get your screen windows and doors before the busy season? Prices are LOWEST IN YEARS.

**Hansen & Liljeqvist, Inc.**  
582 Mill St. Telephone 9131  
LUMBER, SASH, DOORS, BUILDING MATERIALS