

RAILROAD WILL TRAVERSE LAVA

Extension Through Rugged "No-Man's Land" Will Cost Over Million

BEND, Ore. (AP) — One of the most recently formed lava fields of Oregon will be crossed when the Great Northern railroad builds its 24-mile extension from Bend to Benham falls at a cost of more than one million dollars.

The road will have to be built across three miles of lava. According to geologists, Lava butte was slowly built up to a cone by the gradual streams of lava exuding from the top of the cone. A huge eruption of steam, gas and igneous rock proved to be too much for the outlet and burst through the side of the volcano, flowing like a thick syrup to the south of the butte where it encountered a slight rise in the land and veered to the north and west, damming the Deschutes river and forcing it to find a new channel.

A small lake was formed by the river at this point and then a new channel was cut through the lava field. This channel is about a half mile long and is not completed at the present time. The waters of the river form a series of rapids at this point, called Benham falls.

About two and a half miles south of Lava butte are the lava caves. They consist of a two-mile tunnel through the lava, which is about 50 feet wide and about 40 feet high. Caves of this type are common. They originated as tunnels through which the liquid lava flowed from the butte. The surface congealed, forming perfect tunnels through which the liquid drained in much the same manner as an underground stream. At a number of places along the border of the lava field the waters of the Deschutes river enter crevices formed in the lava.

It has been estimated by some authorities that the lava field surrounding the butte was formed at a period only slightly more than 150 years ago. It is known the field is more recent than that of Newberry crater. From the summit of the butte 42 similar cones can be seen.

The cones in the butte is about 150 feet deep. The forest service has a lookout stationed at the top, affording an excellent view of the surrounding country.

MARCH CAR OUTPUT HIGHEST IN MONTHS

New gains in automobile production for March were indicated Thursday when the national automobile chamber of commerce, announcing its regular monthly estimate, placed the output for last month at 284,883 cars and trucks.

Not only does this mean an increase of 25 per cent over the output for the preceding month, but it places the industry ahead of its record for the last nine months.

Production for the first quarter of 1931 was announced at 695,650 units—34 per cent under the output for the corresponding period in 1930.

The chamber estimate is based upon factory shipping reports for the month.

MATERIALS COME FROM MANY PLACES

"During the last year Firestone has completed further development of the battery plant," according to Bill Watkins of the

YOUNGEST



Although she is usually well hidden in the shadow of her illustrious husband, Signora Benito Mussolini, wife of the Premier of Italy, consents to pose with her youngest son, Roman.

NEW MODEL COUPE



The latest of the Chevrolet line is the five-passenger coupe, with de luxe equipment throughout, including the chromium-plated radiator grille. The upper photograph shows a side view of the car. In the center is the baggage compartment in the rear, and below the wide door is shown. Chevrolet dealers now have the new models on display.

Smith and Watkins service station, which is now taking part in the Firestone Battery Inspection month during April, in which free battery tests and other inducements are being offered to aid motorists in obtaining better battery performance.

"Rubber for the genuine hard rubber cases comes from Singapore, from Brazil, or from the Firestone plantations in Liberia.

"Carloads of pig lead arrive direct from the smelters. Selected pigs are drilled and tested to assure Firestone quality.

"Cars of lead oxide made from domestic or imported lead come in from oxide plants of Missouri.

"Cedar comes from selected giant cedars near Port Orford, Ore., to be used for separators in conjunction with Firestone rubber separators. The separators are treated in Firestone's efficient separator treatment department, which occupies the entire second floor of the new addition.

"Finally the batteries are assembled and sealed, and pass through the electrical part of the manufacture, in the department where huge control boards with innumerable dials mount to the roof of the spacious building. Then there is one supreme and final test to which every battery is subjected to reveal any possible defect missed by previous inspections."

PARTY MUST FACE ISSUE SAYS SHOUSE

PORTLAND, Ore., April 18.—(AP) — The democratic party must have the courage to deal frankly with the prohibition question and must offer some effective substitute "for the conditions that prevail under the eighteenth amendment," J. J. Shouse, chairman of the National Democratic Executive committee, declared in an address before Oregon democrats here Friday.

Shouse said he would rather see the democratic party "go down in courageous defeat" than to have it "win a temporary victory" by the force of political expediency in dealing with such an outstanding issue.

Economic issues and prohibition will form the battle ground for the 1932 presidential campaign, Shouse predicted.

The democratic leader charged the republican administration had failed to meet the economic needs of the nation in regard to the tariff, farm relief and unemployment. He declared President Hoover had been a great factor in democratic success last November.

Shouse intended to leave tonight for Seattle.

WATERWAYS MEET IS WELL ATTENDED

PORTLAND, Ore., April 18.—(AP) — Cities that would be affected by the proposed development of waterways of the Willamette and Columbia rivers should co-operate more closely, it was pointed out at the meeting of the Willamette River Waterways association here Friday.

Frank T. Jenkins, Eugene, president of the association, said railroads established terminals at cities that had good natural harbors and that they welcomed the water competition because they realized that the business accruing from the competition would be mutually beneficial.

The meeting drew delegations from Canby, Junction City, Eugene, Corvallis, Vancouver, McMinnville, Cottage Grove, Oregon City, Salem, Jefferson and several other cities.

AUTO CAMP BRINGS MONEY INTO CITY

Practically every tourist who registers in the city municipal camp grounds spends money in Salem which when totaled amounts to a creditable sum each year, is the opinion of H. S. Polmal, a popular attendant of the grounds. Mr. Polmal arrives at this conclusion from the sales slips which he finds left behind by departing tourists.

This fact makes the present outlook for heavy tourist travel this summer a particularly pleasing one to Salem merchants. And in order to insure a large number of tourists for the camp grounds which is an entirely self-sustaining business, work is being done which will make the grounds more pleasing and inviting to travelers.

The 12 cottages are being kalsomined and complete repairs are being made. The grounds are being put into better condition by the planting of shrubs, and a new entrance at the South Winter gateway has been erected.

No damage was done to the cottages by the recent high water.

FORD EXHIBIT HERE MONDAY

Residents of Salem and this county will have an opportunity to "visit" the great plants of the Ford Motor company through the medium of a sound motion picture to be exhibited in Salem week, Manager Phillips of Valley Motor Co., local Ford dealer announced today. The movie will be a part of a

Ford show to be held beginning April 20 and continuing through April 22 in a large tent at Union and High streets. The show will be open to the public free of charge from 10 a. m. to 10 p. m. each day.

Those who visit the show will be able to learn not only how Ford cars and trucks are manufactured in quantity production, but to obtain some idea of the vastness of the Ford enterprises. Manager Phillips pointed out. They will see how coal obtained from Ford-owned mines is transported to the plants in Dearborn, Mich., in Ford-owned railroad cars; how iron ore from Ford mines and lumber from Ford forests are carried in Ford lake ships; and how in the manufacture of the car various by-products are utilized by making fertilizer, charcoal briquets, chemicals and other things.

Besides the motion picture, the show will include a number of special exhibits revealing step by step how various parts of the car are made, a cutaway truck chassis, and a tudor body cut in half to reveal the details of its construction.

A feature of the show will be a display of the full line of Ford passenger and commercial cars.

Turner to Raise Levee to Prevent Flooded Streets

TURNER, April 18.—Turner has always been annoyed by water running through the town, during periods of high water. Damage more or less is always the result, besides the inconvenience suffered at the time of flood. After much complaint the members of the city council have decided to build up the levee where needed.

Also it was agreed to improve the lighting system by installing larger street lights.

Graham Reports Consistent Gain In Export Sales

A consistent gain in export shipments during the first quarter is reported by Graham-Paige Motors corporation. March

showed a 20 per cent increase over February, which had gained 28 per cent over January.

Sixty-eight per cent of all shipments have gone into the European market, the far east accounting for 18 per cent, and Africa, nine per cent. South America's shipments totaled 8 per cent.

"It is pleasing to note the gradual return of overseas business," said Walter R. Glennie, export sales manager. "More orders are coming in each month, and the business promises to be steady and permanent. We are looking forward to a second quarter total about double the shipments in the first quarter."

Highway contracts totaling \$246,412 for new construction work have been let in Mississippi.

NASH

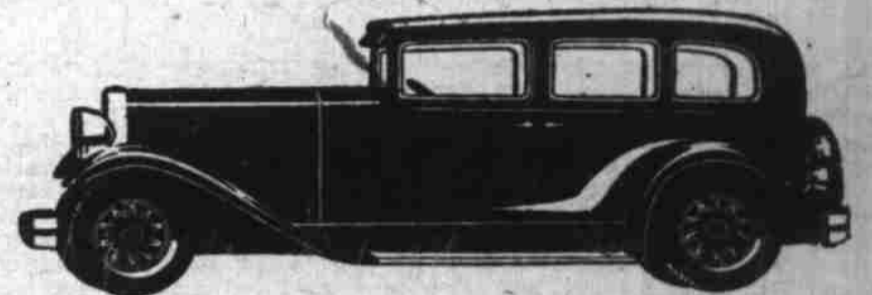
For Finer Performance — Drive This Car

THE NASH SIX-60 SEDAN

\$845

F. O. B. FACTORY

The delivered price of this Six-60 Sedan, fully equipped, is \$1056. This includes spare tire, tire lock, tire cover, bumpers and freight—the car complete, ready to drive. For your own protection compare the difference between the Nash f. o. b. price and the Nash delivered price, with the difference between the f. o. b. and delivered prices of any competitive car. See how much Nash saves you.



OWNERS will tell you that this big Nash is the fastest accelerating Six they have ever driven — and the smoothest.

A beautiful car—handsomely dressed inside and out. A quality car—all the way through. Note its fine wood-and-steel body—its 7-bearing crankshaft — its rifle bored connecting rods — and its long list of other fine car features.

You'll revel in its smooth ease as it quick-steps through and around traffic. And you'll find welcome assurance in the fact that you can drive it all day long at high speed and in restful comfort.

7-Bearing crankshaft; Torque-bearing crankshaft; Rifle bored connecting rods; Exceptionally effective high-speed safety brakes; Long wheelbase; Composite wood and steel body; Wide rear seats; Adjustable driver's seat; Twin oval ventilators; Headlamps and all exterior fittings, full chromium finished.

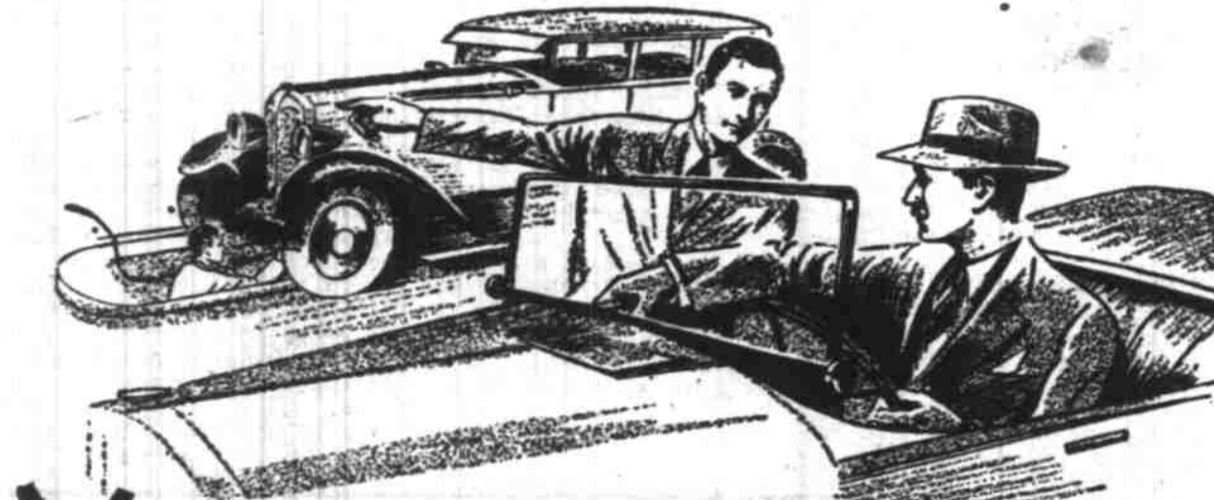
DELIVERED PRICES ON NASH SIXES AND EIGHTS RANGE FROM \$1066 TO \$2340

James H. Maden Company, Inc.

385 N. Commercial

"After We Sell We Serve"

Telephone 8590



YOUR CAR IS HEADED FOR EARLY DESTRUCTION

IF SCIENTIFIC LUBRICATION IS NEGLECTED

When your car is driven without proper lubrication at every friction point serious damage is certain to result. Denied the protection so vital to efficient operation, the moving parts soon give way, and your car reaches the end of its usefulness long before its inbuilt service has been delivered.

THE MOST SCIENTIFIC LUBRICATION SERVICE EVER KNOWN

Here you receive guaranteed lubrication, with the proper grade of lubricant recommended by the car manufacturers for each point, applied with the very latest equipment. Double inspection insures a thorough job. Drive in today and let us show you this new standard of lubricating efficiency.

Firestone OLDFIELD TYPE BALLOONS

Table with columns: Size, Price Each, Price per Pair. Rows include sizes 4.40-21, 4.50-21, 4.75-19, 5.00-20, 5.25-18, 5.25-21, 6.00-20.

Firestone ANCHOR TYPE SUPER HEAVY DUTY

Table with columns: Size, Price Each, Price per Pair. Rows include sizes 4.50-20, 4.50-21, 4.75-19, 4.75-20, 5.00-20, 5.25-21, 5.50-20, 6.00-20, 6.50-20, 7.00-21.

H. D. TRUCK TIRES

Table with columns: Size, Price Each, Price per Pair. Rows include sizes 30x5, 32x6.

Complete Firestone One-Stop Service

Advertisement for Smith & Watkins, featuring 'Jim' and 'Bill' and phone number 9144.

KELLY Lotta Miles TIRES

Advertisement for Kelly tires showing various sizes and prices, including 4.75-19, 4.50-20, 5.25-18, 5.00-19, 4.75-21, 4.40-21, 5.50-19, 5.00-22, 5.25-19.

Kelly quality is a definite factor, something that can be proved by your speedometer—increased safety—your complete satisfaction. We offer you Kelly quality at these amazing prices.

VALLEY MOTOR CO. AUTHORIZED FORD SALES AND SERVICE SALEM, ORE.

- List of associate dealers: C. "Chet" Lindley Service Station, Douglas McKay Chevrolet Co., Smith and Townsend Service Station, Charles Haynes Triangle Service Station, Elmer J. Roth Service Station, Priem and Caspell Service Station.