

Watch for This
Section Each
Thursday

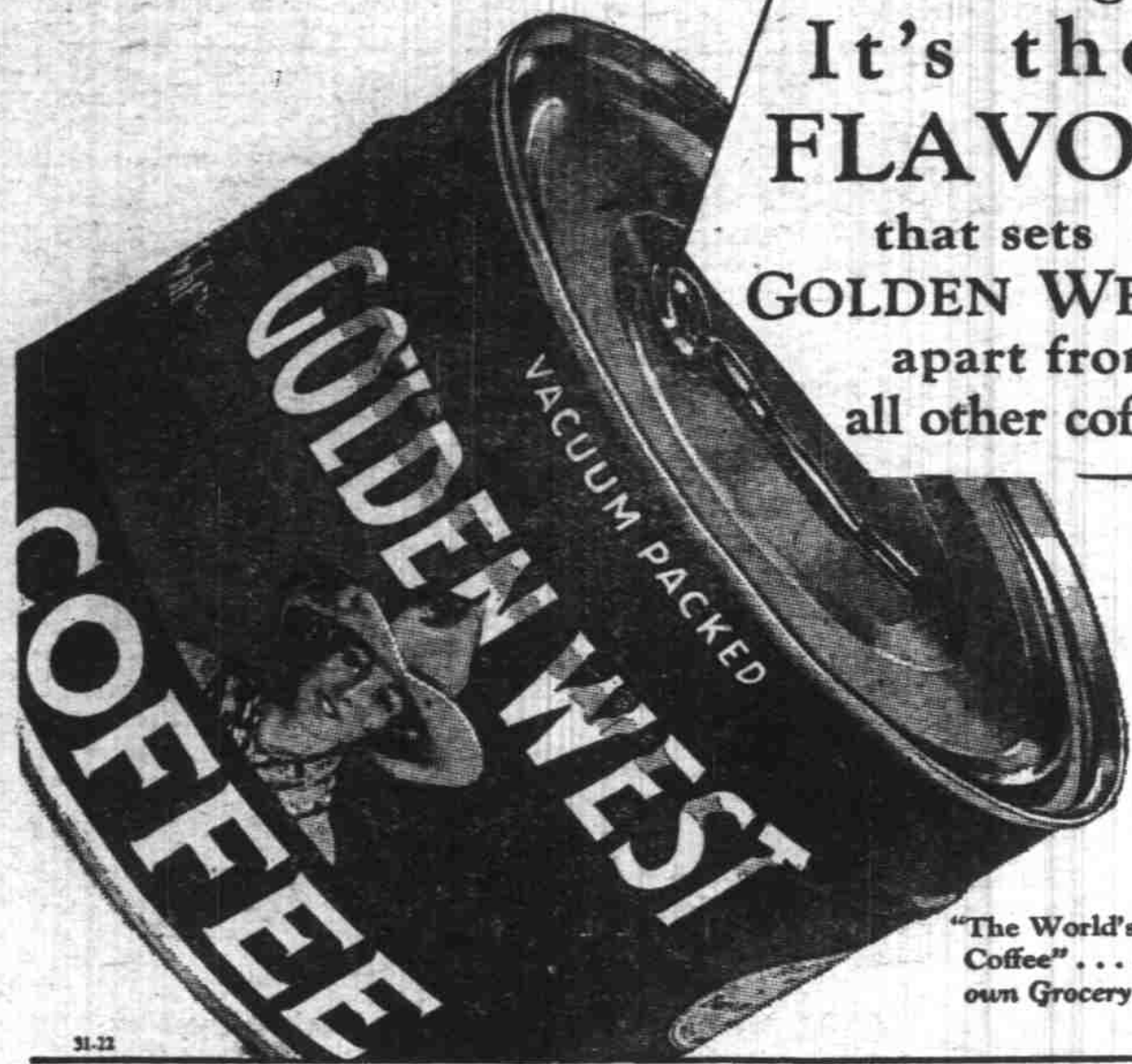
The Salem Advertiser

Green Section Ads
Money-Savers for
You; Read Them

A section of The Oregon Statesman featuring Merchandise Savings

Salem, Oregon, Thursday Morning, April 16, 1931

Watch for this Section



You'll agree
It's the
FLAVOR
that sets
GOLDEN WEST
apart from
all other coffees

"The World's Finest
Coffee" ... at your
own Grocery

SCHOETTLER TALKS AT CREDIT SESSION

E. V. Patterson was appointed chairman of the On to Spokane committee for the Salem Retail Credit association at the regular luncheon meeting on Wednesday. The Retail conference of the Pacific northwest will be held in that city May 18 and 19 and it is hoped that a number of delegates from the Salem association will be able to attend.

L. R. Schoettler, of the Salem Building Material Dealers Credit association, was the speaker of the day and discussed the subject of property liens. According to Mr. Schoettler 75 percent of the building done in the past 10 years could not have been done without the operation of the property lien law. He emphasized the fact that the receipt of a notice of property lien is in no way a reflection on the credit responsibility of the property owner but is a purely business proposition and is nothing more than a reasonable protection for the building material dealer.

If You Buy Your Groceries From Damon—

You will have the standing assurance that everything is the purest and the best that can be obtained. You will enjoy knowing, too, that the price you are paying for them is as low as can be found anywhere—often lower. Here are a few of the many items priced low for this week's selling:

- Tacoma Malt Syrup per can 35c
- Jelly, 3 Glasses for 25c
- 50c Jap Tea on Sale 35c
- Spuds per Sack 80c
- Rhubarb, 4 lbs. for 10c
- Old Dutch Cleanser 2 for 15c
- 15c Bath-Tut Cleanser, Sale 10c
- 2 Cans Monarch Golden Maltze Corn for 25c
- Salted Peanuts, 2 lbs. for 35c
- Large 31 ounce can Pork and Beans ... 15c
- 3 Pkgs. Plain or Iodized Salt for... 25c
- 6 lbs. Italian Prunes for 25c
- 6 lbs. Curv Cut Macaroni 25c
- 2 lbs. of Dript Coffee for 45c
- 2 lbs. of High Grade Dinner Set Coffee and a nice dish for 75c

Dinner Set Coffee is certainly good coffee. Couldn't be otherwise if bought at Damon's. We have several grades, of course—some cheaper than others; but each one is the best any honest dealer can afford to sell for the money.

DAMON'S

NO RENT LOW PRICES
809 N. Com'l St.
If you can't drop in Call 8309. We deliver free any place in Salem.
We Pay 13c today for Eggs
STORE OPEN 'TILL 9 P.M.

Coming to

SALEM Dr. Mellenthin SPECIALIST

In Internal Medicine for the Past Eighteen Years

DOES NOT OPERATE

Will be at
Marion Hotel
Tuesday, April 28
Office Hours: 10 a.m. to 4 p.m.
ONE DAY ONLY

No Charge for Consultation

Dr. Mellenthin is a regular graduate in medicine and surgery and is licensed by the state of Oregon. He does not operate for chronic appendicitis, gall stones, ulcers of stomach, tonsils or adenoids.

He has to his credit wonderful results in diseases of the stomach, liver, bowels, blood, skin, nerves, heart, kidney, bladder, bed wetting, catarrh, weak lungs, rheumatism, sciatica, leg ulcers and rectal ailments.

Remember above date, that consultation on this trip will be free and that his treatment is different.

Married women must be accompanied by their husbands.

Address: 4221 West Third St., Los Angeles, California.

SHOOT IT OFF THE BRIDGE WITH A BEAN SHOOTER

That's what we'd do with the dern thing—and just to avoid showing partiality we'd let the tail go with the hide and throw the radio in after it. We hear some of the most enlightenin' programs over that blamed radio down in the housewares department.

JUST NOW SOME PAINLESS DENTIST

down in Portland is givin' a lecture and answering questions about the care of teeth. It seems, according to the Doc, some fellow up at Hood River had a tooth pulled and he writes in and says the tooth had two roots and still hurts. The Doc didn't make it clear which was hurtin, the man or the tooth.

IF IT WAS THE MAN THAT'S STILL HURTIN'

we wouldn't know what to do, but if it was one of our teeth and it kept hurtin' us after it was pulled we'd shoot the doggone thing clear across the river and never tell the Doc anything about it.

Now I suppose if we weren't so darned curious we wouldn't be listening to every bozo that's sendin' out chin music over the radio, botherin' folks when they're tryin' to write ads (or something). That doesn't effect our prices none though folks, they're always low — radio or not.

BUSICK'S at the MARKET NOT A CHAIN STORE

Colgate Palmolive
Peet Brothers
Spap Company

Now, there may be a little more to that name but to save me I can't think of it if there is. But just by way of getting themselves introduced to our customers this week they are offering one of the best Soap Specials we've seen in many a day.

Here's their idea of a good deal—ours, too, for that matter (our idea of a good value we mean)

- 1 large pkg. Granulated Soap ..45c
- 1 Kitchen size Super Suds10c
- 8 Bars C. W. Soap.....25c
- 1 10c pkg. Granulated Soap.....10c
- 1 Small pkg. Granulated Soap No charge 90c
- and just to make it worth your while we're going to sell the whole
- Kaboodle for 63c

Florida
Grapefruit

Packed in No. 2 cans Sweetened with Pure Cane Sugar, slightly broken segments. The quality is of the best and from the ripest Fruit

2 Cans 25c

Broken
Sliced
Pineapple

Delicious Ripe Fruit and our price is down 20%. Not that we're trying to make it appear that we're responsible for the decline in price, however. No, our next shipment will cost less than that's all.

2 large cans 29c

M. J. B. the flavor Protected Coffee 1 lb. cans 39c

Busick's Freshly Roasted and Blended Coffee, 3 lbs. 69c

New fresh stack Pancrust, 3 pound parts 59c

Camel Syrup 5 lb. cans 59c

Tea Garden Syrup 5 lb. cans 59c

What's that in those Barrels that smells like Vanilla?

Well, Sir, folks, that's Vanilla and it's the real stuff, too, how's that? "Oh," we buy it that way because we can save our customers 50% and still give 'em the Best quality. How much for a big bottle full like this? Let's see, that's a 4 oz. Bottle isn't it, well that sells for only 29c (filled of course).

Milk and Honey Granhams, 2 lb. Boxes 2 for 57c

Shredded Wheat. 4 pkgs. 39c

No. 10 Sk. Freshly Milled Oats. 35c

Jelly
Powder

At a nickel a Pkg. is as we see it a good value for people with plenty of cents but don't care to spend ten of 'em for a Pkg. of Jelly Powder. Choice of Flavors

5 Pkgs. 24c

Busick's
Oven-Fresh
Bread

As a lady told us the other day, takes the cake when it comes to quality and she said a loaf like that for a nickel was just about what the old town was needing to keep the Bread business in Salem where it belongs and of course we agree with 'er

1 lb. loaves 5c
1 1/2 lb. loaves 10c

Fancy Evaporated Peaches 2 Pounds 19c

Canned Peaches 2 large cans..... 29c

Feed Dept.

White Mill Run 13% Protein Test 80 lb. sk. 69c

BU-MAR Egg Maker 100 lb. sack \$1.89

BU-MAR Scratch \$1.69

Albers Chic Starter 100 lb. sacks \$3.49

Albers Pullet Grower 100 lb. sacks \$2.35

Albers Pullet Scratch 100 lb. sack \$1.95

Wheat 100 lb. sacks \$1.15

Oats 100 lb. sacks \$1.10

Flour

We might not admit it, of course—but there's a lot of things we don't know about flour and one of those things is why we get more loaves of bread from a barrel of Pillsbury's Best than we do from some other brands we've used in our Bakery and that just goes to show that price per sack is sack is not the only rule to measure a sack of flour. By—or with—darn it, I was talking like Pillsbury's flour was a high priced flour 'tain't though—

49 lb. sack \$1.25
24 1/2 lb. sk 69c

100 lb. sack of Burbank Potatoes 95c

Silver Leaf Lard 2 lbs. 25c

Pure Cane Fine Granulated Sugar 10 lbs. 46c

White Spray Flour 49 lb. sk. 99c

Pet Milk 4 cans 25c

Rainier Ginger Ale, 3 bottles 29c

Freshly Ground Peanut Butter 2 lbs. 25c

Island Brand Solid Pack Tomatoes 2 large cans..... 25c

Thompson's Chocolate Malted Milk 1 lb. can 39c

Borden's Plain Malted Milk 1 lb. can 49c

Borden's Eagle Brand Milk Per can 19c

Fresh Frozen Oregon Strawberries 2 lbs. 27c

Loganberries 2 lbs. 25c

OREGON'S
OWN
CASH
STORES



LOW
PRICES
EVERY
DAY

Store No. 5
598 N. Commercial St.
Phone 7814

FREE CITY
DELIVERY

Store No. 7
294 N. Commercial St.
Phone 3527

Phone Your Orders for Prompt Courteous Service

DID YOU EVER NOTICE HOW CLEAN WE KEEP THE
FOODSTUFFS WE HAVE FOR YOU TO EAT?

White Wonder
Soap
10 Bars 29c

OYSTERS
4 oz. cans
3 cans 25c
Velvet Toilet Tissue
1000 Sheet
4 rolls 25c

Oranges
Sweet Juicy Navels
3 Dozen 49c
Per 1/2 Case \$1.15

Peter Pan Coffee Quality in the Cup 34c -- 3 lbs. \$1.00

Carnation Milk
Tall Cans
6 Cans 39c

Fluff Cake Flour
Large Package 29c

Beans
Red Mexican
Per lb. 4c

Matches
Per Box 3c

Macaroni
Per lb. 5c

Fresh Creamery Butter, per lb. 24c

Valley Rose Flour
49 lb. Sack 89c

Blue Stem Flour
Fancy Hard Wheat
49 lb. Sack 98c

Queen Olives
5 oz. Jar
10c

Cherries
Maraschino Style
10c Jar

Grapefruit
Seedless
6 For 25c

MEAT MARKET -- Features

THIS WEEK

Dressed Chickens
Per lb. 27c

Bacon Squares
Per lb. 11c

Hockless Picnics
Per lb. 17c

Pure Beef
Hamburger
Per lb. 16c

Smoked Hams
1/2 or Whole Hams
Per lb. 25c

FEED DEPARTMENT

Hodgen Brewster Egg Mash—
Alfalfa Greens — Cod Liver Oil Milk
100 lbs. 20%

\$2.09

We Buy Poultry and Eggs —
Highest Prices Paid at
All Times

Charcole
Fine - Coarse or Med.
50 lbs. \$1.15

The New Tapo
Oyster-Shell \$1.09

Hodgen Brewster Dairy Meal
New, Pure 20% Prot.
100 lbs. \$1.65