

HOTEL DE GINK GOES TO WALL

Thriving Business Growing Out of Depression is Now Feeling Pinch

SPOKANE, (AP)—A young business which grew out of economic depression and thrived while other concerns were going to the wall, at last has felt the pinch and will be closed.

It is the "Hotel De Gink," haven for the homeless and sanctuary for the jobless, which drew customers from all walks of life during its brief existence. Its doors will be closed, officially April 1.

"Business is awful," said Dr. Ralph Hendricks, city commissioner in charge. "With spring jobs opening up so many of our customers are leaving and we feel we can't operate much longer."

"Hotel De Gink" which was once a brewery and later a "jungle" where the jobless and homeless congregated for many years, was taken over by the city, renamed "East Trent Bilet," and turned into a "hotel" financed by city and charity funds. At times nearly 1,000 men were "registered."

Communitarian Existence Led One of the guests was a good cook; he became the chef. Others were tailors, barbers, shoemakers, bookkeepers, and blacksmiths. All were given jobs "on the payroll" of the novel institution. The unskilled laborers made their way by doing odd jobs for the city and others. Instead of money they were given "credits" which paid for food, whatever clothing was available, shaves and haircuts, and other necessities.

As soon as the "customers" found regular jobs they moved on and gave their bunk to someone else. And, when the "regular job" ended, many old guests returned, to live there until they found other work.

The three square meals a day, composed of wholesome staples, cost an average of 20 cents a day per man.

SPECIAL SERVICES START, MONMOUTH

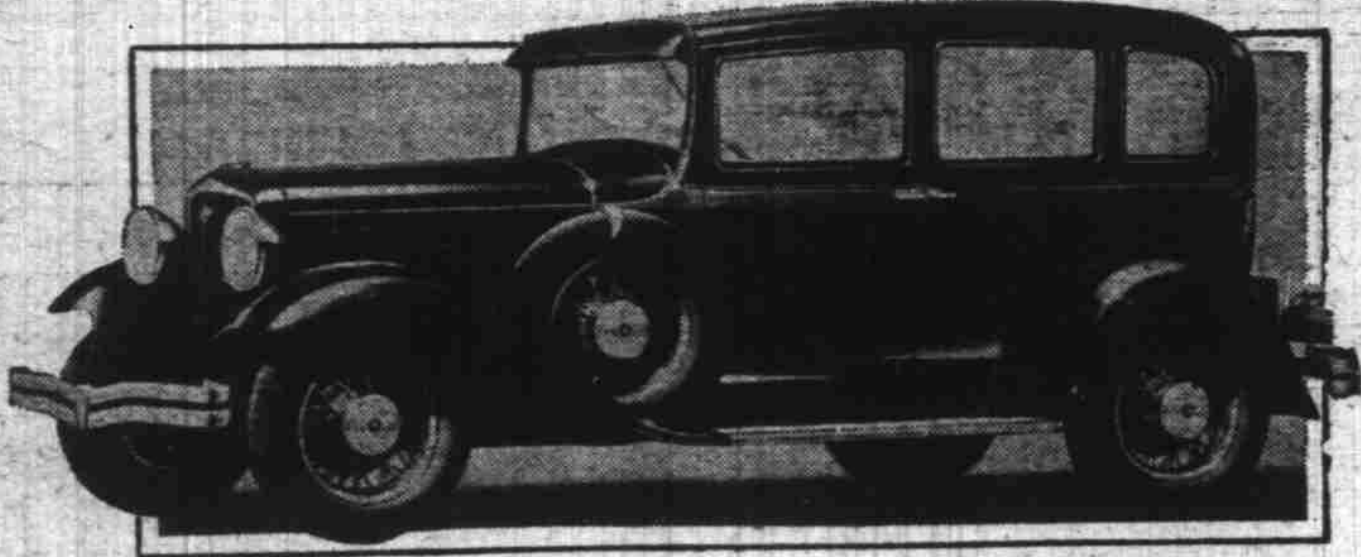
Evangelical Group Secures Speakers From Several Other Churches

MONMOUTH, March 14—Two weeks of special services in the Monmouth "Evangelical" church will begin at 7:30 Sunday evening, March 15. The following ministers will participate as speakers: Rev. F. R. Sibley of the M. E. church of Independence, will talk on China and show pictures relative to his theme. He spent several years as a missionary in China, and since returning to America has kept in touch with mission life abroad.

Rev. L. H. Willard, pastor of the Monmouth church will speak Tuesday and Wednesday evenings. Rev. J. Stocker, minister of the Dallas Evangelical church will be the speaker Thursday and Friday evenings.

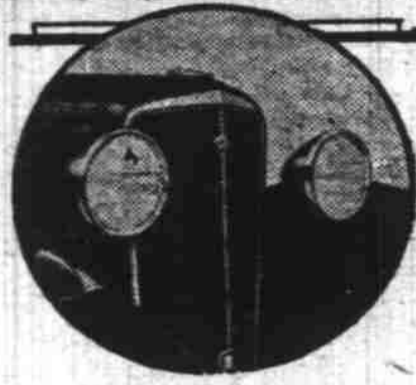
During the second week, Rev. Paul Petticaud, pastor of the

ANNOUNCE NEW FREE WHEELING STUDEBAKER



The New Studebaker Six Regal Sedan for five with Free Wheeling. Brilliant 70 horsepower engine. 114 inch wheelbase. Six wire wheels and folding luggage grid are standard. Price is \$995 at the factory.

At Right—The new radiator of The New Studebaker Six with its graceful lines and new modern treatment interprets the very spirit of Free Wheeling.



FREE WHEELING IN STUDEBAKER

Light six now Offers new Transmission Like Big Cars

A new Studebaker Six, redesigned as to appearance, and equipped with free wheeling under positive gear control, is announced by Studebaker, and displayed by State Motors, Inc. local Studebaker dealer. The new model, with its 70-horsepower engine, is the most powerful car ever offered at such a low price. Prices range from \$795 to \$995.

The introduction of free wheeling last summer in the new series President and Commander Elights won such unprecedented public approval that two months later a new series Dictator Eight was announced embodying this remarkable advancement. The immediate success which attended this move convinced Studebaker of the feasibility of offering free wheeling throughout its entire line. Hence the new Studebaker Six.

The new Studebaker Six, with its free wheeling under positive gear control, manufactured under Studebaker patents, is now made available to thousands of motorists, who, fully convinced of its sound advantages were unable to enjoy them heretofore because of economic reasons. These advantages have been demonstrated so conclusively during the past few months, that many of the country's leading automotive authorities now contend that it is only a question of time before all motor cars will have free wheeling.

The Studebaker free wheeling unit is an integral part of the transmission, and is extremely simple and sturdy in design. It replaces the high and second speed slider gears of the conventional transmission, the only additional units employed being the constant-mesh helical gears on the mainshaft, which provide a degree of silent operation hitherto unknown.

The salient features of free wheeling are briefly summed up in a new degree of driving thrill, new easy shifting of gears without the use of the clutch, new standards of operating economy, and a new degree of safety. The provision of conventional engagement in all gears makes the full braking power of the engine instantly available.

NEW YORK, (AP)—A cat may look at a king and also wink at a judge. The case before Magistrate Michael Ford involved the ownership of a cat called on the one hand "Tom" and on the other "Pinky." John Bonner, a negro porter said the cat belonged to him. Mrs. Catherine Burrho said it was hers.

The cat, wrapped in a blanket, was prettied up for the occasion with a red ribbon and an ornamental chain. It was held in the arms of Mrs. Burrho's daughter. "It's my cat," said Bonner. "I'll show you."

Tom was put down on the floor. Bonner hooped his arms. "Jump, Tom," he coaxed. The cat yawned and began washing his face with the circular motion beauty experts recommend. He declined to jump.

Mrs. Burrho's daughter then had a try. "Pinky," she commanded, "wink at the judge." The cat turned its head solemnly toward the judge and executed an unmistakable wink. "My, my," said the court to the

Bain Speaker to Monitor Group of Parent-Teachers

MONITOR, March 14—The March meeting of the Parent-Teachers' association was held Wednesday night in Lennon's hall. Mrs. D. J. Gillanders, president, was unable to be present on account of illness. Mrs. C. V. Carmichael took charge of the meeting.

Following the business meeting a program was given by the Woodburn high school. The program included a piano solo by Donna Conyne; a reading by Phyllis Koenig; a solo by Mrs. V. D. Bain and a talk by V. D. Bain, superintendent of the Woodburn public schools, on vocational education.

CLOVERDALE, March 14—Friends of Mrs. W. Anderson are sorry to learn that it was necessary for her to undergo a major operation Wednesday. From last reports she was progressing as well as could be expected. She is at the hospital in Lebanon. Her daughter, Mrs. Nora Bennett, of Hoskins, is at the hospital with her.

young Miss Burrho. "It's your cat."

'CATACOMBS' AREA OF GOTHAM GROWS

New "Radio City" Beneath Earth Level to Cover Three City Blocks

By LEO J. RYAN
NEW YORK, March 14—(AP)—Radio is extending the area of New York's "catacombs." Before the announcement that the \$250,000,000 "radio city" planned for uptown Gotham, would contain not only a city in the clouds, but another under the ground. New York already had quite a city beneath the surface of the earth.

It is now possible to buy almost anything except a house and lot without coming to the surface. Carpenters' tools, clothing, flowers, groceries, shoes, shaves, haircuts, tobaccos, ice cream sodas, toys—all may be had in the labyrinth of shops that make up the underground city in the Hudson river terminal downtown, connecting with the subway and the Hudson river tubes, leading to Jersey.

This largest of the "catacomb" cities on Manhattan, up to now, has two levels and as many shops and stores as a good sized mid-western county seat. It covers the area beneath two whole city squares.

Other subterranean "cities," include a large one at the uptown Hudson terminal at Broadway and Thirty-third street, and a very large one at the Grand Central station one at Times Square and the Pennsylvania station. Because of the crowds that pass they are preferred positions, in the real estate and mercantile sense.

The new subterranean section of the uptown "radio city," will not depend upon the subway for its population. It will be, for the present, entirely away from any rapid transit system.

If patrons will be the millions of thought and harmony flashing through the ether and the searchers after entertainment who will crowd into the three theaters of the new "city." This underground city will have garages, service platforms, arcades and shops of all kinds. There will be two levels. Through the subterranean city the whole of the "radio city" extending to 65 stories above the surface will be "serviced."

The new "city" will cover nearly three city blocks.

It is on a hillside overlooking the Hudson river, in the neighborhood of the old New York State Capitol building, that the new "radio city" will be built. It will cover nearly three city blocks.

PAPER FIRM'S EARNINGS TOLD

Lower Than 1929 Though Profit Made and Some Of Bonds Retired

Gross earnings for the Oregon Pulp and Paper company here are somewhat lower in 1930 than in 1929 according to figures released last week in Portland by Frederick W. Leadbetter, president of the firm. The Columbia River Paper mills at Vancouver, Wash., affiliated with the local mill through the Columbia River Paper company, a holding concern in which control is held by the Leadbetter interests, show a substantially lower gross profit than in 1929, the decline being attributed to the lower market price which continued through 1930.

Both mills, however, operated steadily and during 1930, the Oregon Pulp and Paper company here retired \$50,000 of its series A, first mortgage bonds, and \$20,000 of its series B, mortgage bonds.

Gross earnings of the local mill in 1930, before depreciation, bond interest and federal taxes, were \$374,748 in 1930, \$611,354 in 1929, and \$775,652 in 1928.

Gross earnings on the Vancouver mill, before depreciation, bond interest and federal taxes, were \$490,528. This compared to \$514,920 in 1929 and \$62,209 in 1928. Sets Up Reserve For Depreciation

On the Oregon Pulp and Paper company here the company set up a depreciation reserve of \$203,925.

Kenneth Russell and Mr. and Mrs. Charles Cummings. Kenneth Russell is building a home on his 10 acres on the market road near the Pacific highway. It will soon be ready for occupancy. The F. Feller place occupied by Mr. and Mrs. H. Feller is greatly improved by a new garage and farm.

and paid in interest on outstanding bonds \$70,400.

On the Columbia River Paper Mills the company set up a depreciation reserve of \$168,370, and paid interest of \$2,800 on bonds outstanding.

A summary of the balance sheets of both companies at the close of business in 1930, was:

Ore. Pulp. Col. Riv. and Paper Paper Mills Plant \$4,261,102 \$3,385,273 Dep. res. 1,052,116 611,735

Net Fixed assets 3,198,986 2,573,538 Investm'ts 24,500 1,438,355 Cur. assets 1,002,624 794,239 Cur. liab. 616,176 304,220

Work. cap. 386,448 490,019 Advances 328,286 Surplus 514,335 1,282,538 Tot'l assets 5,707,377 6,029,559

Capitalization—6% 1st mtg. bond 1,150,000 880,000 8% p.a. cum. pd. 800,000 750,000 Com. p. 1,296,700 2,000,000

Homemakers' Club Hears Radio Talk

MONITOR, March 14—The homemakers' radio club met Tuesday at the home of Mrs. H. M. Biberstein. The talk broadcast from O. S. C. by Sara Watt Prentiss was on "Is Your Child Growing Up Emotionally." Present were Mrs. D. J. Gillanders, Mrs. Fred Willig, Mrs. W. G. Wolfe, Mrs. L. E. Dimick and Mrs. V. G. Colvin.

ON WAY TO IOWA ANKENY BOTTOM, March 14.—Mrs. Nellie Lamb and mother, Mrs. M. J. Johnston, who have been visiting relatives in California for some time, are on their way to their home in Toledo, Ia., and have stopped off here for a two weeks' visit with their son and brother, Mr. and Mrs. C. F. Johnston.

First Evangelical church at Corvallis, will speak on Monday and Tuesday nights. He is a trombone player, and will render selections, also on this instrument.

Rev. L. H. Willard will occupy the pulpit Wednesday and Thursday evenings. Friday evening will be "high school" night, and will be for both junior and senior high school students. Rev. E. A. Fogg of Kings Valley, will bring the message.

There will be no Saturday night meetings, and Rev. Willard will speak at both of the Sunday services.

Warmer Days Welcomed by Turner Area

TURNER, March 14—Farmers and gardeners are glad to see warm days again and much work for early crops needs to be done. Keith Bones, the small lad who received a burned back last week, is improving and well on the road to recovery.

Mr. and Mrs. H. S. Bond had for their house guests over the week end, Mr. and Mrs. M. C. Bond of Sutherlin at which place Mr. Bond is station agent.

Mrs. D. B. Parks visited her husband Saturday at the veteran's hospital in Portland.

Woman Honored, Birthday Dinner

CLOVERDALE, March 14—A birthday dinner in honor of Mrs. Charles Cummings was enjoyed Sunday at the Cummings' home. Mrs. Cummings was presented a large birthday cake decorated with candles by her sister, Mrs. Thomas. Those enjoying the day were Mrs. J. Durham, Mrs. Hill, Mrs. J. Thomas, Allen, Delbert, and Harold Thomas and Beverly Ann Madsen of Salem. Mr. and Mrs. William Morris, Mr. and Mrs.

AND NOW WE OFFER YOU THIS PROOF OF SAFE MILES IN KELLY TIRES



SAFE MILES that are finger-printed, proved conclusively by the Kelly Safetygraphs. Read the Kelly advertisements in this week's issues of the Saturday Evening Post, Collier's, or Liberty. They tell the complete story.

A test car, driving continuously night and day for thousands of miles over mountain roads, was run on strips of carbon paper at regular stages. The tires, like huge rubber stamps, printed these "carbon copies" of Safe Miles—the Kelly Safetygraph.

Here is proof of Safe Miles. In the face of the steady growth of automobile accidents, due to faulty tire performance, it is significant that Kelly Tires—always famous for long mileage—give you something still more important—Safe Miles.

VALLEY MOTOR CO. AUTHORIZED FORD SALES AND SERVICE SALEM, ORE.

C. R. Lindley Service Station 619 Court St.

Douglas McKay Chevrolet Co. 420 N. Commercial St.

COMPARE THESE "CARBON COPIES" OF SAFE MILES Made from actual photographs of Kelly Safetygraphs

for Safe Miles KELLY TIRES

The Greater HUDSON \$875 EIGHT

The Greater Hudson Eight Coach, 1931 f. a. Detroit

Smoothest of the Eights . . .

87 Horsepower • More Speed • Rare Riding Comfort

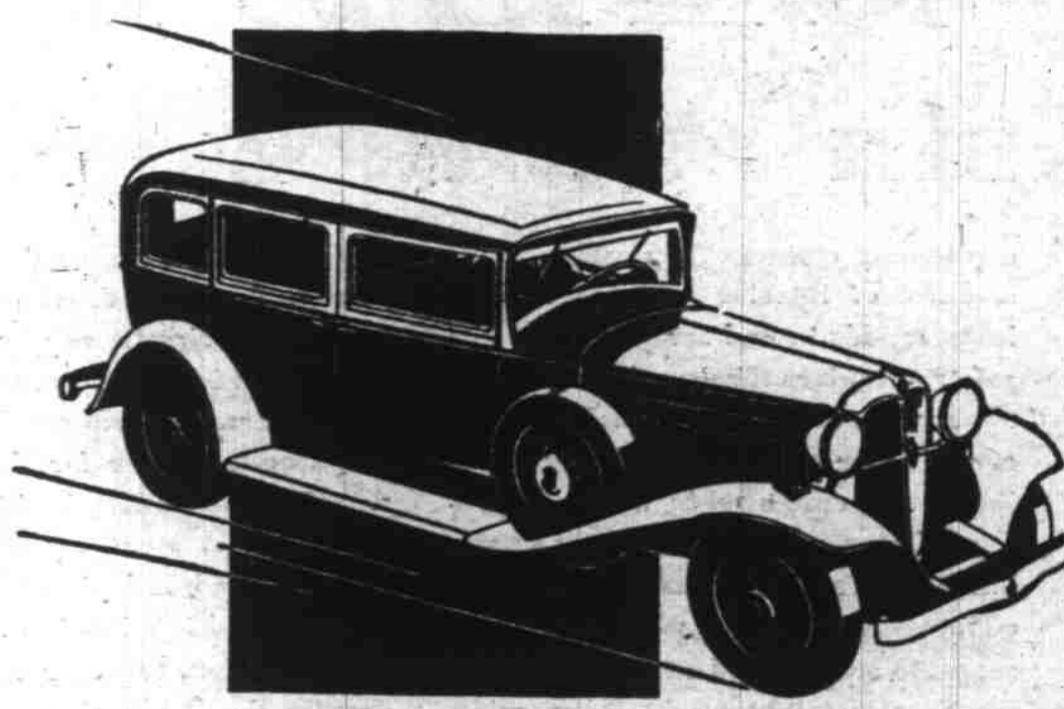
Hudson has been famous for performance for 22 years. Now the Greater Hudson Eight surpasses any previous model in speed, hill-climbing, acceleration and reliability. Its big, 87-horsepower motor is smoother at all speeds. Motor vibrations, the principal cause of riding and driving fatigue, are practically eliminated. Improvements in the fuel system set a new mark in eight-cylinder economy. And it is priced as low as \$875!

This Hudson looks aristocratic—and it is! From its chromium-plated radiator grid to its well-proportioned rear quarters, it is smartly styled. Interiors, too, are beautifully done. But its most impressive advantage is the Rare Riding and Driving Comfort it gives you at its amazingly low price. Drive this Hudson and test it yourself. Any of the dealers listed below are ready to demonstrate the Greater Hudson Eight to you today.

Easy to Buy—Easy to Pay for—Economical to Own—Drive it Today!

State Motors Inc.

Chemeketa at High Telephone 1000



A saving of \$700 . . . on this largest, most powerful, low-priced WILLYS-KNIGHT

NEW WILLYS CARS A BIG SIX, priced like a four A POWERFUL EIGHT A BRILLIANT KNIGHT 3 NEW WILLYS TRUCKS . . .

Willys Six \$695 to \$850 Willys Eight \$995 to \$1095 Willys 1/2-ton trucks \$295 Willys 1 1/2-ton trucks \$595 All prices f. o. b. Toledo, Ohio

The Willys-Knight reduction, impressive though it be, is not the only outstanding feature . . . This new Willys-Knight is larger, faster and livelier . . . It is distinguished in appearance, luxurious in appointment . . . It brings you the smoothness of the patented double sleeve-valve engine—87 horsepower, quiet operation, sturdy reliability, no valves to grind.

SAFETY GLASS IN ALL WINDOWS AT SLIGHT EXTRA COST \$1095 to \$1195

Willys Motors Inc.

515 S. Commercial Telephone 992