

Corbett Issues His Platform in Gubernatorial Campaign

FUTURE POLICY IS MAPPED OUT

Conservative Trend Noted in Announcement on Highway Building

Sincere efforts toward law enforcement, vigilance to prevent waste in state expenditure, non-interference with the policies of the highway commission and earnest cooperation toward the development are some of the pledges included in a statement issued by Harry L. Corbett today in connection with his candidacy for the republican nomination for governor.

"I aspire to the office of governor because I should like to be of service to the state in which I was born, which my ancestors helped to develop and in which my children will live after me," Mr. Corbett states in introducing his platform, some of the planks which follow:

LAW ENFORCEMENT
I will enforce the laws with sincerity and justice and will appoint no man to enforce a law who does not observe the law.

TAXES
I will use ceaseless vigilance to prevent waste in state expenditures. I will be ready to spend a tax dollar for progress if convinced that the state will receive full value for it. I shall support the state budget commission in order to maintain an intelligent aid in state expenditures. I shall urge further supervision of assessments and laws that will equalize tax inequalities.

HIGHWAYS
I believe in the steady completion of our highway program. I shall continue to oppose interfering with the duties of the highway commission for purposes of political log-rolling. Except to meet new Federal aid I shall continue to oppose the issuance of more road bonds until I am assured they cannot become a burden on real property. The state will pass the peak of its road bond retirement in 1932, and I hope greater aid may then be given our program of market roads.

GAME
Eastern states derive great benefit and revenue from their game resources. Game, fish and streams are among Oregon's greatest assets. They must be preserved and protected. The game commission should be permitted to conduct a continuing policy of preservation and propagation. Game commissioners should be appointed without regard to politics, with due regard to location, and with the aid of organizations interested in game propagation and protection.

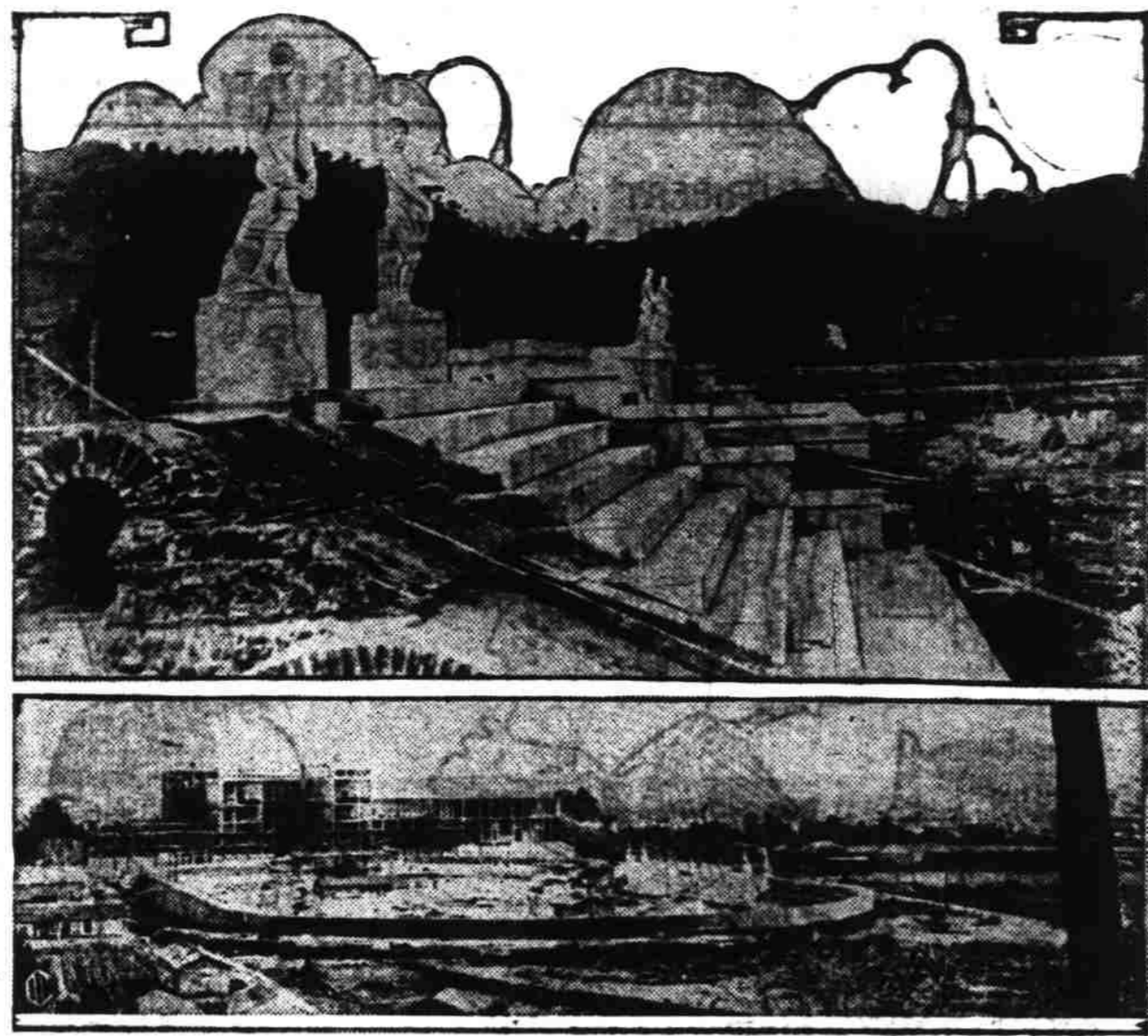
STANDARDS
Medicine products are a drug on the market. Better standards for Oregon products will bring wider markets and higher prices. Our state agencies must be used to raise the quality of our products and promote better standards and more profitable marketing.

PUBLIC SERVICE COMMISSION
Regulation of utilities is a public function. The state is the most powerful body created by the people. It is more powerful than the utilities, which are created within it, and I am in favor of strengthening its power of regulation. I am opposed to the state giving up its power of regulation, because this means stepping backward into the past of unregulated competition and political corruption. I wish to appoint a commission as Governor Roosevelt has done in New York State, to advise on the problems of utility valuations and earnings and on the feasibility of making our water power resources produce a real revenue for the state.

COLUMBIA RIVER
The Columbia River is waiting for the development of power, irrigation and commerce. These assets of the river must be utilized. Public or private investment must develop this water power resource to supply Oregon with electric energy capable of furnishing cheap power to new industries. I pledge every effort to the support of this development.

EDUCATION
I believe our educational system stands high but must be made to rank among the highest in the

IL DUCE STADIUM LARGEST IN WORLD



The Forum Mussolini, partially completed, will be the largest stadium in the world. Above is shown four statues of gladiators guarding the entrance to Stadium Mussolini, to which each province of Italy will contribute one statue in marble, so that the stadium in honor of Il Duce will represent the entire country in its artistic endeavor. (Lower) A general view of the partially completed stadium, which is expected to surpass everything of its kind in the world.

nation. Its foundation is in our Normal schools. Its future depends upon a wise and liberal support of our state college and university. The board of higher education will continue to have my support. If elected, I will not be obligated to make any appointment in return for political support. I will make every appointment on the basis of merit. I will work for the greater development and welfare of Oregon. These things I shall take upon myself as a serious duty and a solemn pledge to the people of the state.

HARRY L. CORBETT.

PAMPHLET IS BEING PREPARED BY HOSS

The work of preparing the copy for the candidates pamphlet to be issued prior to the primary election, got under way here Wednesday under the directions of the secretary of state. Actual printing of the pamphlets will start next week. It will require approximately 325,000 of these pamphlets to supply the demand. Attaches of the state department said the pamphlet would be one of the largest ever issued prior to a primary election in Oregon. Space reserved in the pamphlet by the various candidates ranges from one to 4 pages. The law provides that these pamphlets shall be in the mail 10 days prior to the primary election. Space in the pamphlet is sold at the rate of \$100 per page, with the understanding that candidates shall provide their own cuts.

WEST SALEM GIRL HAS ENTERTAINMENT

WEST SALEM, April 2.—Mrs. Hubble Young of Plaza street gave a birthday party at her home Monday honoring the birthday of her daughter, Carol, who was seven years old Monday. The little folk played a number of games after which delightful refreshments were served by Mrs. Hubble Young, assisted by her mother, Mrs. F. P. Nutting, and her sister-in-law, Mrs. Roy Nutting of Albany. The house was beautifully decorated with daffodils and the entire party was carried out in Easter fashion. Those present were the following: Beth Nutting of Albany, Virginia Lee Gilbert of Salem, Ann Tartar of Salem, Betty Jean Bishop, Marguerite Shipley, Teresa Mae Greene, Ruth Shipley, Marguerite Rose Greene, Mary Elizabeth Patterson, Maxine Smith, Virginia Bishop, Thelma Jane Anderson, June Young, and the honor guest, Carol Young.

COMMUNITY GROUP WILL PRESENT PLAY

WEST SALEM, April 2.—The West Salem Community club is sponsoring a play which will be given by the Liberty Community club, Friday evening, April 4, in the basement of the church.

MUSIC PROGRAM IS APPRECIATED HERE

By OLIVE M. DOAK
"And the last shall be first" was certainly true of the last program of the group of three played in Salem this past winter and spring by the Portland String quartet under the auspices of the Chamber Music society, Wednesday night at the Woman's clubhouse. To me it was the best of the three.

And a delighted audience seemed to bear me out in this feeling as it sat intently listening for nearly two hours of Beethoven, Debussy, Borden and Glazounov as each was interpreted by the quartet. The interpretations were full of individual personality which made both the old and the modern composers work take life and glow for the benefit of the listeners.

The andante cantabile with all the fine shadings and emotions of its five variations stirred anew an appreciation for the many-sided beauties of Beethoven's compositions. The quartet gave beautiful individual interpretation in this and shaded the individual work into ensemble work in artistic and stirring manner.

The "Quartet, Opus 10" of Debussy was splendid. Fearless, clearcut, sharp contrasts, sudden bursts of fire and tempestuousness and all accentuated with sharp pizzicato movements made this group of numbers stand out like a brilliant sunset. All four movements were beautifully played.

The last two numbers were gentle contrasts to Debussy although the last, "Valse, suite, opus 25" by Glazounov was a joyously gay poem, played with sprightly verve and blend with lovely harmony.

Suzie Fenne, Pipes in taking leave of the Salem audience expressed the appreciation for the sympathetic reception given them in Salem and remarked that now that they had played 25 concerts this year and only five of them in Portland that they had become an

The Call Board..

By OLIVE M. DOAK

BLIGH'S CAPITOL
State between High and Church
Friday—Loose Ankles.
FOX ELSINOBE
High between State and Trade
Today—"Street of Chance."
GRAND
North High between Court and State
Today—"The Squall."
HOLLYWOOD
Today—"The Mounted Stranger."

Oregon quartet rather than a Portland quartet. It is to be hoped that they will be back with Salem next year.

Payne Departs On Evangelistic Journey Today

Rev. R. L. Payne, pastor of the First Baptist church here for the last three years, will leave with a day or two to go into evangelistic work in Florida, he announced yesterday. Enroute south, he may stop to accept offers to preach revival campaigns in New Mexico and Arizona.

Mrs. Payne and their family will not leave Salem until the middle of June, if at all. Payne said that it is quite possible he will retain his home here. Upon completion of his services here Sunday, and following the Sunday night service, officials of the church presented Rev. Payne with a letter commending the good which he had done with in the church. Members of the young people's department presented him with a fine traveling bag in appreciation of his work for them.

Tampa, Fla., business men plan to establish a university.

GAS STATION REDUCES RATE

Price Reduction to Twenty Cents Reported at One Service Plant

While motorists are wondering why Salem can't get in on the 15-cent gasoline that is reported in McMinnville, Independence and Amity, one service station on the outskirts of town has developed an independent attitude and along with it a price cut to 20 cents a gallon. Business out that way was reported to be picking up at a brisk pace yesterday afternoon. Oil was advertised at the same station at 15 cents a quart.

Attendees at this station are reported to have told one patron yesterday that they were just opening up the business and were making the special price for awhile at the start. Reports of 15-cent gas in places around Salem bettered a local business man's report on gas prices around Chehalis, Wash.

Traveling up there a few days ago this man found gasoline selling as low as eight cents a gallon, and the usual price was around 10 and 11 cents.

GRAND THEATRE

"WHERE SOUND IS BEST"

Last Times Tonight

CORINNE GRIFFITH

in "PRISONERS"

Intense Drama

Beautiful Music

Thrilling Dialog

Also

"After the Show"

A show in itself. It's the season's comedy hit!

Pathe Sound News

Friday Brings

The Vitaphone Scenation

with Myrna Loy

The SQUALL

A Real National Picture

A Fish Story Worth While!

MAMMOTH SAN CLEMENTE 55 Foot WHALE 65 Tons



And the 10-foot 8-ton Baby Whale Exhibited in specially constructed, glass enclosed railroad car

Daily 9 a. m. to 11 p. m.
Friday 1:30 Only
Oregon Electric at Chemeketa and Front Sts.

OREGON ALLOWED EXTRA ROAD FUND

As a result of the increased federal appropriation for the benefit of federal-aided highways in the various states, Oregon will receive, beginning this year, \$800,000 in excess of its previous federal allowance. This was announced here Wednesday by Roy Klein, state highway engineer.

For several years the federal appropriation has been approximately \$75,000,000, of which Oregon received \$1,200,000. The state of Oregon will receive \$2,000,000 under the new apportionment.

Klein said he had not determined how much of the money would be apportioned to Oregon localities, but said a large amount probably would be applied toward the completion of the Roosevelt Coast highway.

All highway funds in Oregon are handled by the state highway commission.

CONDENSED STATEMENT OF CONDITION

First National Bank

As Reported to the Comptroller of the Currency
March 27th, 1930

RESOURCES

CASH	On Hand and Due From Banks.....	\$ 840,126.60
INVESTMENTS	United States Gov't Securities.....	802,990.31
	Other Bonds and Securities.....	724,233.71
LOANS AND DISCOUNTS	1,276,218.29
Stock in Federal Reserve Bank	7,500.00
Real Estate, Furniture & Fixtures	110,779.65
TOTAL	\$2,762,848.56

LIABILITIES

Capital Stock	\$ 200,000.00
Surplus and Undivided Profits	67,495.23
Reserve for Dividends, Contingencies, etc.	7,500.00
Circulation	90,280.00
Deposits	2,397,573.23
TOTAL	\$2,762,848.56

HOLLYWOOD TODAY and THURSDAY

THE MANHATTAN PLAYERS Present "OH GRANDMA" A Comedy Drama in Three Acts and On the Screen

ANN HARDING Her Private Affair

COMING FRIDAY & SATURDAY ALL-TALKING

NOW PLAYING!

LAUGHS? Why you don't know your laugh capacity until you've seen and heard this clever comedy concoction!

LOOSE ANKLES

With plenty of the kind of romance you expect from

Loretta Young and Doug. Fairbanks, Jr.

Last 2 Days

WILLIAM POWELL STREET CHANCE

JEAN ARTHUR KAY FRANCIS

Also "FARO NELL" with LOUISE BARKER

WARNER BROS. Present GEORGE ARLUSS The GREEN GODDESS

Starts SUNDAY at BLIGH'S CAPITOL THEATRE

CONDENSED STATEMENT OF CONDITION

First National Bank

As Reported to the Comptroller of the Currency

March 27th, 1930

RESOURCES

CASH	On Hand and Due From Banks.....	\$ 840,126.60
INVESTMENTS	United States Gov't Securities.....	802,990.31
	Other Bonds and Securities.....	724,233.71
LOANS AND DISCOUNTS	1,276,218.29
Stock in Federal Reserve Bank	7,500.00
Real Estate, Furniture & Fixtures	110,779.65
TOTAL	\$2,762,848.56

LIABILITIES

Capital Stock	\$ 200,000.00
Surplus and Undivided Profits	67,495.23
Reserve for Dividends, Contingencies, etc.	7,500.00
Circulation	90,280.00
Deposits	2,397,573.23
TOTAL	\$2,762,848.56

OFFICERS

Daniel J. Fry.....	H. E. Eakin.....
Chairman of the Board	Asst. Vice-President and Trust Officer
E. F. Slade.....	President
S. B. Elliott.....	Vice-President
C. W. Paulus.....	Cashier

DIRECTORS

DANIEL J. FRY	W. W. MOORE
Chairman of the Board	Capitalist
S. B. ELLIOTT	H. H. OLINGER
Vice-President	Dentist
CARL F. GERLINGER	J. C. FERRY
President Dallas Machine & Locomotive Works	Druggist
W. M. HAMILTON	KEITH POWELL
District Manager Portland Electric Power Co.	President, Bank of Woodburn
R. M. HOFER	CUSTER E. ROSS
H. Roter & Sons, Publishers	Attorney-at-Law
D. B. JARMAN	H. F. SLADE
Capitalist	President
T. A. LIVESLEY	B. L. STEEVES
Physician	R. E. LEE STEINER
T. A. Livesley & Co.	Superintendent Oregon State Hospital
JOHN H. MARY	H. O. WHITE
Justice U. S. District Court	Merchant

MORE THAN 75 STOCKHOLDERS IN SALEM

Established 1885

The NATIONAL BANK in Salem Oregon

JAPAN... \$525 CHINA... \$606 MANILA... \$656

Reduced roundtrips in effect on President Liners sailing from Seattle and Victoria, B. C., between May 1 and July 31.

You need no longer keep this trip in the promised class of "someday-surely-TH-go." This summer you can make this cruise of a lifetime at the lowest cost ever offered.

And you need sacrifice nothing in luxury for the President Liners are the famous Round the World ships.

A large outside stateroom, with real beds, is yours. On spacious decks, in comfortable social rooms, you share a joyous life at sea with world travelers.

Additional schedule drives you at goose-stop through

your trip! Stop over as you please.

If some world port whose name means romance, captivates you... stop. There's another President Liner in just a week. From the Orient President Liners return on weekly schedules to America.

SAILINGS

A President Liner sails every other Saturday from Seattle and Victoria, B. C. Weekly sailings from Los Angeles and San Francisco via Honolulu.

Full information from any steamship or tourist agent.

AMERICAN MAIL LINE

152 Broadway, Portland 4th at University, Seattle Robert Dollar Bldg., San Francisco