

BETTER HOMES

GARDEN CLUB HAS MEETING

Landscaping Expert Talks to Woodburn Folk at Social Gathering

WOODBURN—The club rooms at the city library were entirely filled with members of the Woodburn Garden club and their friends who were out to hear the expert talk offered by Mr. A. L. Peck, head of the landscaping department at Oregon State.

The business meeting was presided over by the president, Mrs. E. E. Settlemyer, who thanked the club for the large attendance and invited anyone to come who were interested whether they were members of the club or not. Mrs. George Landon, chairman of the city beautiful committee, reported that they had acted with a committee from the chamber of commerce and had accomplished a great deal by urging the citizens of Woodburn to cooperate with them by cleaning and painting up their dwellings and yards.

Prizes Dispensed With
The committee could not award prizes to the persons in the districts in which the city was divided for making the most improvement in a home because no photographs were taken before and after the improvements were made, but it was hoped that the committee for next year would be able to offer more inducement to people to improve their yards.

The city beautiful committee for the coming year was named as Arthur Dickenson, Mrs. William Yates, Mrs. H. L. Gill, Mrs. H. Overton and Mrs. W. J. Wilson. The committee appointed for the junior club committee consisted of Mrs. Harry Grubb, Mrs. C. A. Parr and Mrs. Vanderbeck. The club voted to buy \$5 worth of seeds to give to the children for fall flowers for the flower show to be held at that time.

The nominating committee appointed was Mrs. J. J. Hall, Mrs. J. F. Plank and Mrs. Ina Bonney. Mrs. H. F. Butterfield as chairman of the spring flower show committee reported that the show will be held next month.

Peck Gives Real Help
The speaker of the evening, Professor Peck, gave an interesting and instructive talk on shrubbery and the planting of shrubs to the best advantage. He especially urged the growing of native shrubs on city lots and lawns. Professor Peck said the greatest mistake of people who were inexperienced in landscaping was to plant shrubs that grew extensively and soon lose their artistic beauty and also shut out the light from the house and give the home a gloomy atmosphere. Shrubs which lose their leaves and flowers are more interesting than other types because they give variety which adds to their attractiveness. Mr. Peck said that it was advisable to get shrubs from a nurseryman rather than attempt to gather them because so many shrub failures are caused by inexperienced transplanting. The location should come before the shrub and it is much better to plant a shrub in a shady place and allow it to mature before transplanting it to its permanent location.

Wants Trees Planted
Professor Peck said that although trees could not be planted along the highways they would prove attractive in some of the barren fields and waste lands and he suggested that the clubs make it a point to urge all the farmers to cooperate in planting trees on their unproductive fields.

BAKER MAKES MOVE TO GAIN SPOTLIGHT

PORTLAND, Ore., March 22—(AP)—George L. Baker, Portland mayor, today charged that petitions in circulation here for his and the four city commissioners' recall are being promoted by "racketeers, some of whom have served penitentiary sentences and have been guilty of moral turpitude." The mayor demanded that City Auditor G. R. Funk recheck all recall petitions filed with him.

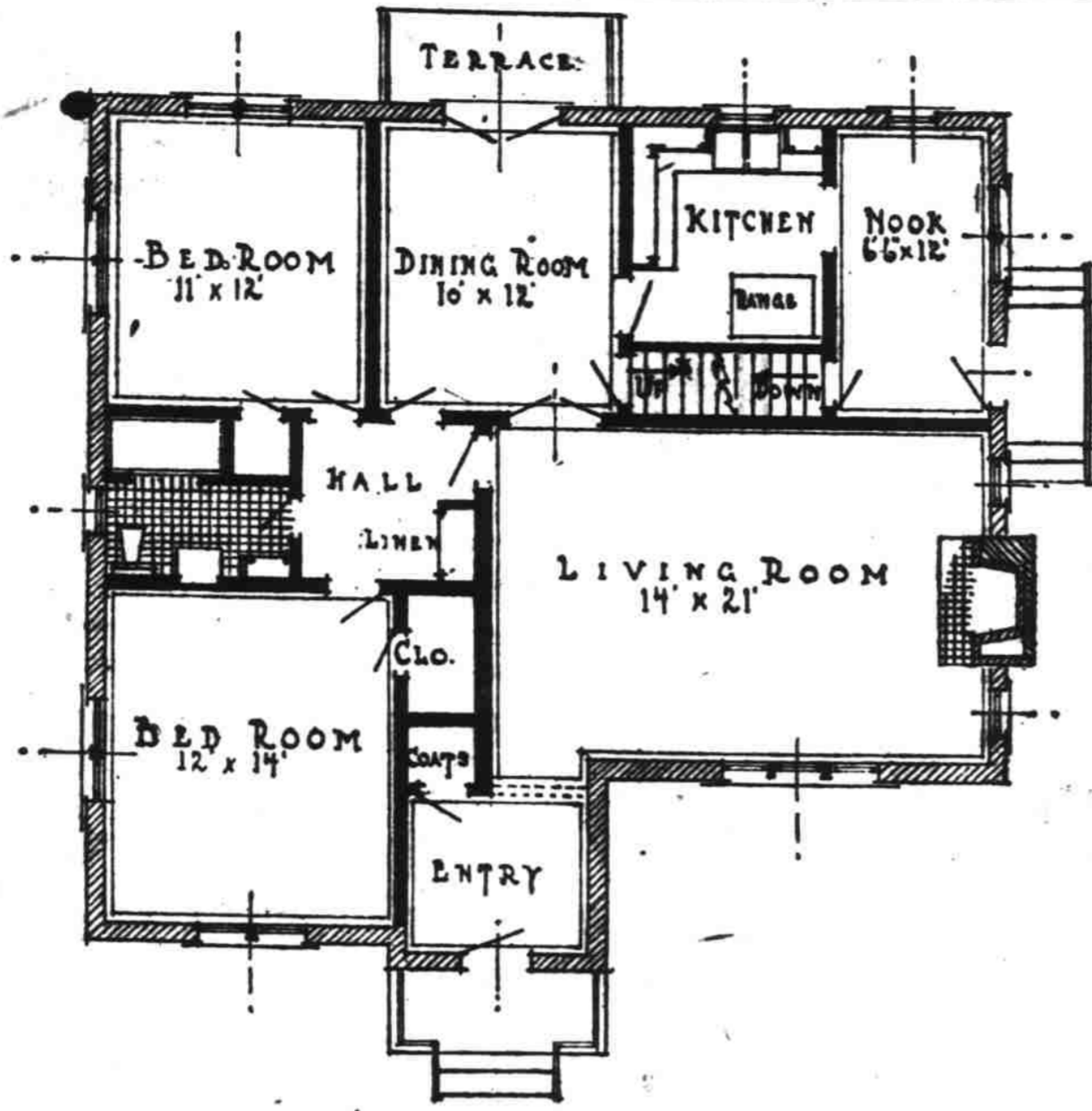
"What is being done," the mayor charged in a letter to the auditor, "is violating the purposes of our recall system to such an extent as to hamper and harass other public officers. If an irresponsible group of citizens may step out without cause or reason and by means of forgeries place names upon a petition and cause public officials embarrassment and expense of a recall fight, we will soon find such offices unattractive to any but those willing to stoop to the demands of the racketeers."

Ryder Finn Wins Unusual Honor

McCOY, March 22—Word has been received here that Cadet Ryder Finn of New York Military Academy, son of Mr. and Mrs. Waldo Finn, will take a trip to the Bermuda Islands over the Easter vacation.

He was picked from the school by one of the professors to go as his guest and assistant.

ATTRACTIVE FLOOR PLAN



— A FIVE ROOM HOUSE PLAN —
BRICK EXTERIOR WALLS

Specially drawn for The Statesman building, offices 311 United States National Bank building, Salem, Ore. by Lyle P. Bartholomew, architect.

Desirability of Oregon Product Is Stressed in Spring Flower Gardening

MRS. W. W. ROSEBRAUGH
How much do you know about Oregon flowers? No only her wealth of native flowers, many of which are the envy of Europe, but those grown commercially. We are beginning to scratch and poke about in our gardens to find that some things have been killed. We will be buying plants to replace those lost and adding others to our collection. Will we succumb to the lure of the catalogs of eastern growers or buy at home? Do we know what is available in choice plants and bulbs in or very near Salem?

I am so often surprised when I ask friends whether they have seen certain lovely flowers or plants which are being grown in our vicinity and I am told no. Perhaps some one mentions having bought some new lilies and I ask, "Did you buy them of...?" mentioning some local dealer and the answer is "No, we sent 'back east'."

They may not know, but in many cases it is true that the bulbs they have bought were raised in Oregon, bought here by eastern wholesale buyers and af-

ter being delivered in the east are returned here when ordered. Even in cases where this is not true the Oregon bulbs are superior to those grown elsewhere. The volume of buying of Oregon gardeners is not a big business but why, so foolishly, send any of our dollars out of Oregon? Why not turn over a new leaf. Illustrations in foreign catalogs may be attractive, but why should we pay for them?

When the executive committee of our Oregon Federation of Garden clubs met in Forest Grove two years ago we visited one of the largest plantings of fine daffodils I have ever seen. There were many acres covered by a "Host of yellow daffodils" along the bank of one of Oregon's loveliest streams. It is the home of Mrs. Robert Warren, secretary treasurer of the state federation.

But we don't have to go so far to see such beauty. We have become somewhat familiar with our lovely tulip farms west and north of Salem. Tow many know of the different plantings of lilies, daffodils and hyacinth just north of

Salem on the river road Silverton has extensive plantings of the loveliest of iris. This iris will be in bloom in May. See it by all means, as well as the lovely similar iris grown by Salem growers.

Then there is the rock or Alpine plants. Shall we order those by mail, get smaller plants in the less perfect condition or shall we buy them of those who buy their groceries in our own home town.

At the Garden club meeting recently, we were interested in the pictures shown of our lovely native Alpine plants. Most of these can be ordered over your local telephone including the delightful new viola, Portland Gem.

We don't claim that Oregon has everything, but Oregon has so much more than many of us know about, it makes our ignorance a hardship. Let's learn more about Oregon plants!

SHADE AND BEAUTY

Remove the barren appearance and relieve the heat of summer by use of shade trees.

Shade trees—Weeping Willow, Sycamore, Elm, Maple, Catalpa, Mt. Ash, Walnut, Birch.

Flowering trees—Hawthorne, Tulip Tree, Jap Double Flowering Cherry, Dogwood, Flowering Crabapples.

Trees 75c to \$2.00.

A complete line of shrubs, trees and roses.

PEARCY BROS. NURSERY
240 N. Liberty

SPRINGTIME IS MOVING TIME

Padded Vans
For Local and Long Distance Moving, Call

LARMER 3131

also
Fuel Oil, Coal, Wood and Gasco Briquets

SHORT TIME PAPER

A SAFE INVESTMENT FOR YOUR SURPLUS FUNDS

Collateral Trust Notes
United States National Bank Trustee

6 9 12 Months Maturity

\$500.00 6 Months Note Cost \$485.00
\$500.00 12 Months Note Cost \$470.00

Notes in Amounts \$500.00 to \$5000.00

The notes are amply secured and provide an outlet for money that you wish to invest for a short time

HAWKINS & ROBERTS
205 Ore. Bldg. Phone 1687

A. M. Clough J. Dale Taylor

CLOUGH-TAYLOR COMPANY

Funeral Directors

Lady Assistant

205 S. Church Telephone 120

VEGETABLES IN DIET STRESSED

Spinach and Other Plants of Leafy Character Found Of High Value

Vegetables, particularly the leafy vegetables, are essential in the diet at a very early age. Liberal quantities of milk and leafy vegetables rich in calcium are needed. This is why spinach plays an important part in the child's diet, and is now considered an essential infant food. Fortunately, in large centers of population fresh spinach is available practically the year round.

The leafy vegetables seem to possess much of the same relationship to other and heavier foods than milk does. Eaten raw, the leafy vegetables are known to be a revision to the vitamins necessary to counteract this trouble. When cooked they lose much of this property. They do carry iron in form for the human system.

While the proper balance of vegetables is essential for the good health and development of children, it is no less important for the robust health of adults. Dietitians say that national health and physical perfection falls short of what it should be, because of inattention to proper diet and the use of enough fresh vegetables. Greater consumption of fresh vegetables would be an important step toward the general improvement of health. The old-fashioned formula of plenty of meat and potatoes is in need of considerable revision to produce the best physical development. Leafy vegetables are needed quite as much as the root and seed vegetables.

SALEM HEIGHTS PLAY APPRECIATED

SALEM HEIGHTS, March 22—On Thursday evening the Salem Heights Dramatic club presented their play "Mr. Well and Str" before a good sized audience. The cast put on an exceptionally good performance as was witnessed by the enthusiastic applause.

In addition to the play Kenneth Abbott of Salem gave three vocal numbers that were especially well received. Elmg Nell of Willamette university gave two readings that were much appreciated and musical numbers were presented by Percy Cooper, Howard Coursey and Harry Lanum on the steel guitar, mandolin and guitar.

Mrs. George Willis directed the program.

FEBRUARY SEES BUILDING DROP

Country-Wide Condition Foretells Prosperity, Says Straus Publication

Further declines in building were indicated generally throughout the United States during the month of February, according to official reports received by S. W. Straus and company. Building permits issued in 573 principal cities and towns in the 43 states during the month amounted to \$125,521,978, a decline of two per cent

from January and a loss of 50 per cent from February of last year. "While it may seem distressing to note from these data the continued downward trend of building operations, it should not be forgotten that this let-up in activities is forming a base for a prosperous era of operations in the near future," the Straus monthly building survey bulletin states in commenting upon the decline. "Manifestly, such conditions are bringing us nearer and nearer the point where housing demands will compel more widespread construction. The process of obsolescence, a continued growth in population and an advancing standard of living are factors which will rearrange the balance of supply and demand. The decline now taking place, therefore, while adding to the quota of unemployment, is nevertheless a factor in fundamental strength," argues the bulletin.

Outside of Portland, Klamath Falls experienced the greatest issuance of building permits in Oregon last month, with \$80,235. In Portland, permits totaled \$425,385, more than three-fourths of all in the state; \$817,556. In February, 1929, Oregon building permits were higher, at \$1,223,66. The February totals in the state were slightly more than \$12,000 lower than the January permits. Salem ranked fourth in the state with \$27,029, third place going to Eugene with \$31,832.

Los Angeles ranked fourth, Seattle ninth and San Francisco 18th in the list of 25 cities reporting throughout the country the largest volume of permits for February.

FOR SALE

- 5 Room - Shakes - Oak Floors - Mahogany finish - Tile Drain Boards - one year old \$4000
\$40.00 Down \$40.00 Mo.
- 4 Room - Garage - large lot - paved street \$2100
\$200.00 Down \$20.00 Mo.
- 5 Room - Walnut Park - complete in every detail - large lot - Garage - Oak floors - papered walls - a cozy home \$4750
\$500.00 Down \$45.00 Mo.
- 5 Room - North 14th St. - this home is absolutely new - an ultra modern Gumwood finish - plank oak floor - Tile Drain Boards and Bath - Shake exterior \$5200
\$500 Down \$50.00 Mo.

Mutual Savings and Loan Association

A Salem Institution Organized in 1910

Place your savings with us

Let us finance your home on weekly or monthly payments

142 South Liberty Street

Ask About Our Poultry House Plans

We have practical and economical poultry house plans which we will gladly furnish to customers.

These poultry houses are especially adaptable to this location and these plans are the result of careful study.

The sizes of the houses are optional from 20 feet to 200 feet in length.

Those interested in such plans may call at our yard or telephone 576.

COPELAND YARDS

West Salem Telephone 576
Dependable serving the Lumber consumer

PRICE & CO.

"Homes of Individuality"

Phone 2173-J or 487
170 N. Front St.

Shown by appointment only

TO REDUCE OUR STOCK

We are selling for one week only, commencing March 24, our complete line of Sherwin-Williams Enameloid Old Dutch Enamels

15% OFF.

Rogers Brushing Lacquer 20% OFF.

Special price on Sherwin-Williams House Paint

COBBS & MITCHELL CO.

349 South High Street Phone 813
We Also Have Good Wood for Sale

LUMBER

and all Building Materials

LR

GABRIEL Powder & Supply Co.
Capital and Union Streets Telephones 2248-728

YOUR HOME SHOULD COME FIRST