

ITALY EXTENDS ITS INFLUENCE

Mussolini's Government is Reaching Southward at Present Time

By ANDRUE BERDING
(Associated Press Staff Writer)
ROME (AP)—Great commercial and political importance attaches not only in Italy but in other countries to the Duke of Puglia's capture of the city of Brak, in Fezzan, south of Tripoli, and 450 miles from the North African coast.

On the surface it means that Italy has taken over the whole land of Fezzan, embracing 200,000 square miles. It means that a military operation begun in 1927 has been crowned with success. But the press of Italy has been filled with details of the campaign because of the significance that lies behind these facts.

It has been said that the footsteps of armies follow the footsteps of commerce, and this is true again with regard to Fezzan. To Italy Fezzan means a highroad to the rich commerce of Central Africa. It lies between the French possessions of Algeria and Tunisia to the west, and British controlled Egypt to the east, across the Libyan desert. Other French possessions are on the south.

For generations the wealthy trade of Central Africa has been deflected either to the right or to the left, to Egypt or to Algeria and Tunisia. In consequence, these countries have become rich, and the central section of North Africa, Libya, has remained poor. The reason for the stagnation of Libya, of which Fezzan is a part, was the rule of the Turk under the sultans. Turkey conquered Libya in 1835. Before Turkish rule Libya was an effective go-between from Central Africa and Italy and Europe. This was true even of Roman times. Under Turkish rule it languished.

Libya was ceded to Italy after the Turko-Italian war of 1912. Two years later Italy started to make her way complete by conquering the natives. In 1914 her conquest of Fezzan was complete but the following year she entered the World War. She withdrew her troops from Africa to rush them to the Adriatic frontier. The natives came back.

Now, under Mussolini, the conquest is supposedly destined to be permanent. An extensive army is maintained in Libya under command of the Duke of Puglia and Marshal Badoglio. And soon the trade routes will be opened to the south. Italy will then bid for commerce with regions as far south as Lake Chad. If her trade route scheme works out as she plans, Italian Libya may become as rich as Algeria and Tunisia or Egypt. In point of territory it is the equal of most of her rivals.

Politically the occupation of Fezzan is important because it tends to establish the southern boundary of the Italian Libya left somewhat indefinite by the treaty of 1912 and likely to conflict with French claims. Possession is nine-tenths of international law as well as private law. The presence of Italian troops on the indefinite frontier will tend to make the border line definite.

Fezzan, moreover, will be a finely stepping stone to further Italian acquisitions in Africa. Italy has bitterly complained since the Peace of 1919 that she was not given any North African colonies, though they had virtually been promised her. She would like to have more of North Africa, or failing that, a strip of territory south from Fezzan on to the Gulf of Guinea and the Atlantic ocean.

Here one finds Mussolini's ideas pursuing once more, as they have done in so many instances already, the path of the ancient Romans. The outposts of Libya still bear traces of the Roman rule in monuments of stone and brick. Perhaps Mussolini will be able to give these monuments renewed significance by his campaign to make Italy a first class colonial European power.

Japs Start Air Lines to Main Land

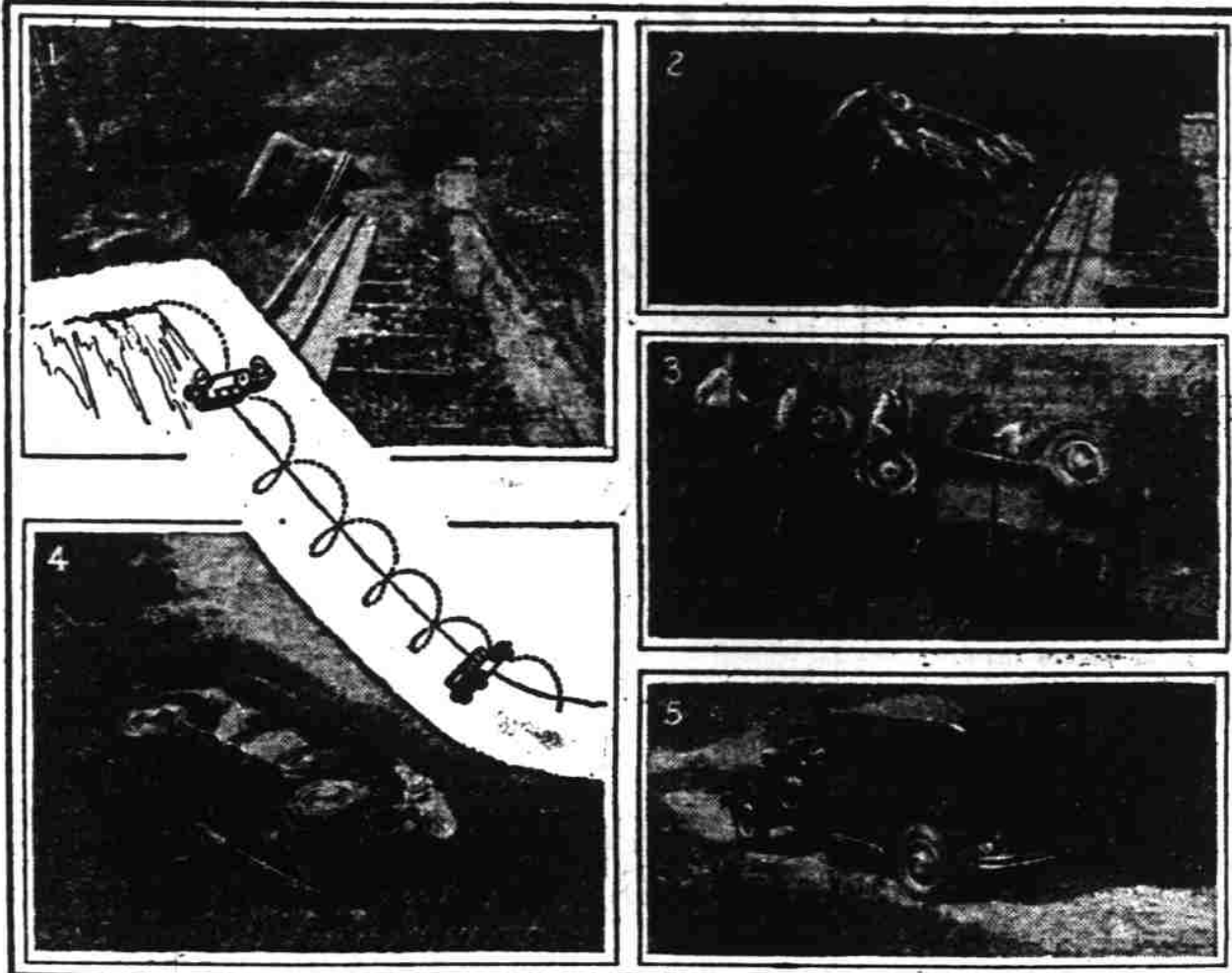
TOKYO (AP)—A one-day air mail and passenger service between Tokyo and Seoul, capital of Japan's greatest colony, Korea, and a hydro-airplane service between Osaka and Shanghai, China's commercial capital, are contributions which Japan hopes to make to air communications in the Orient this year.

The Osaka-Shanghai route would involve the longest overseas hop of any regular line in the world, a six-hour 500-mile jump from Fukuoka in Kyushu. Inception of the service has been delayed because the nationalist regime in Nanking is trying to shake off all foreign control of its communications and has refused to assent to this link between China and Japan. So meanwhile the Japan Air Transport company, which the government has entrusted with all its commercial aviation, has contented itself with operating a sea-plane between Osaka and Fukuoka.

Tokyo and Seoul are connected already by Japan Air Transport company's planes, but the present schedule involves an overnight stop at either Fukuoka or Utsunomiya, Korea, neither of which offers modern hotel accommodations. The company has asked the government to approve a schedule which would take up passengers at dawn in Tokyo and set them down in Seoul at dusk.

Population of Vanikoro Island in the Solomon group is said to have shrunk in five years from 6,000 to less than 100 due to measles, influenza and other illnesses.

CAR ROLLS DOWN MOUNTAIN IN NOVEL TEST



Remarkable action pictures made directly from film of dramatic talking movie showing Dodge car crashing down Pennsylvania mountain-side in scientific test of Mono-piece body construction. 1.—Car leaving wooden runway on its first trip. Pitch of elevated section was not sufficient to overcome inherent balance of Mono-piece construction. 2.—On second attempt, angle of the runway was greatly increased and car lands with a terrific impact, rolling over and over down the hill-side. 3.—When on two occasions the in-built balance of the car halts its spectacular tumble, workmen are required to again start it on its way with a push. 4.—Finally at the bottom after three breath-taking plunges down the mountain—all glass, still intact except in rear panel, broken by loose seat cushion. 5.—Driven off the scene under its own power.

Applicants For Water Held Many

Joseph Marnach of Newberg had filed with the state engineer here application to appropriate water from a spring for domestic purposes in Yamhill county.

Other applications for water filed in the state engineering department during the past week follow:

D. E. Anderson, Klamath Falls, water from Rock Creek and Upper Klamath Lake for irrigation of 973 acres in Klamath county.

G. E. B. Campbell, Martin, Dayville, water from south fork of John Day river for irrigation of 20 acres in Grant county.

Leslie C. Martin, Dayville, water from south fork of John Day river for irrigation in Grant county.

John Moore, Florence, water from unnamed tributary of Sutton Creek, for auto park in Lane county.

Ralph R. Wolf, Yachats, water from Cedar Creek for development of 32 horsepower in Lincoln county.

William Gleave, Melrose, water from unnamed creek for irrigation of 15 acres in Douglas county.

S. J. Christie, Grants Pass, water from Rogue river, for irrigation of 35 acres in Josephine county.

Erick N. Oberg, Newberg, water from unnamed spring for domestic purposes in Yamhill county.

M. E. Waelly, Wallowa, water from spring for domestic purposes in Wallowa county.

C. W. Harold, Grants Pass, water from unnamed drainage canal for irrigation of 10 acres in Josephine county.

Ethel Greene, Plush, permit to store 300 acre feet of water from an unnamed stream to appropriate such stored water for irrigation of 90 acres in Lake county.

E. M. Renfro and W. S. Norman, Marshfield, water from unnamed tributary of Isthumus Inlet for domestic and irrigation purposes in Coos county.

Philo Bogardus, Cascade Locks, water from Dry Creek for irrigation, domestic and operation of ram in Hood river county.

Vienna Held Great Place For Joiners

VIENNA (AP)—Vienna is a city of "Joiners." Clubs and societies to the number of 20,000 are registered with the police authorities. They range from clubs with less than 100 members to societies with more than 10,000.

Altogether there are 1,800,000 members listed in these clubs and societies, so that every man, woman and child of the city could be included but for the fact that many people are members of several organizations.

The object of the clubs are extremely varied—from pure amusement to such serious matters as protection of trade interests, from lovers of pea-soup with pigs' ears who meet weekly at a certain restaurant to vegetarian societies, from savings clubs to holiday associations, from teetotalers to drinkers, from bachelors to spinsters and many others.

It does not need much initiative to form a club here. One or two chance meetings between persons of similar interests nearly always lead to an organization of some sort.

SPEZIA, Italy (AP)—Three Italian submarines of long cruise radii, will soon undertake a trial voyage into the Atlantic, starting from the naval base here.

Dry Ice Is Utilized For Peach

ATLANTA (AP)—Old Mr. Farm Surplus, who needs no introduction on the American scene, has spent his last season as star boarder with southeastern peach growers.

He is about to be frozen naut! The malignant old gent has caused the growers much concern, but a project now under way is expected to eliminate any surplus and add 50 per cent to the growers' income by giving the housewife fresh peaches any time of the year.

Experiments which followed the annual disaster last summer revealed that peaches packed in "dry ice" can be kept fresh indefinitely.

A million dollars is to be spent to build such packing plants in the peach country.

Georgia, chief peach state in the southeast, produced 29,000 carloads last year, marketed 17,000 carloads at a loss and left 3,000 carloads rotting on the ground.

Over-production glutted the market and forced the price below cost. Such has been the situation, in general, for several years.

The "polar peaches" are packed when ripe and are thus of a better quality, according to A. D. Jones, state market head. They are peeled, sliced and put into quart or pint size paper cartons with a dash of syrup, then frozen. They are said to retain ripe peach color and flavor.

The frozen peaches can be handled much as is ice cream, and it is intended they shall be retailed in the same manner—by the corner drug store or grocery.

Heretofore the market has been limited to points reached within 10 days, allowing time for handling and selling. Now, with ability to keep the fruit fresh indefinitely, a world market is sought and plans are afoot to create a European demand.

Added farm income for Georgia will be around \$5,000,000 according to W. R. Tucker, agricultural expert active in the movement. Georgia produces 10,000,000 bushels annually, North Carolina nearly 3,000,000 bushels, South Carolina 1,363,000, Alabama 1,350,000 and Tennessee 2,190,000 bushels.

Working under a \$10,000 grant of the Carnegie foundation, two Stanford university professors are conducting research to determine the capabilities for service to industry of persons past 40.

You can buy a seasoned STUDEBAKER EIGHT as low as \$1195

AT THE FACTORY



SEASONED and proved, Studebaker's Dictator Eight offers the thrifty luxury of straight eight power, certified by 100,000 Studebaker Eights. The quality standards which have guided Studebaker for 78 years, and have made Studebaker Eights unchallenged champions of the world, are evident in every detail of The Dictator.

A new full-power muffler, pioneered by Studebaker—hydraulic shock absorbers—safety steering wheel with adjustable seat and steering column—cam-and-lever steering with Timken bearings—Lanchester vibration damper—thrifty performance—these are but a few of the scores of fine-car features which Studebaker, Builder of Champions, provides in The Dictator Eight at low, One-Price prices.

STUDEBAKER EIGHTS COST NO MORE TO BUY OR TO OPERATE
Dictator Eight Club Sedan • \$1195 Commander Eight 4-Door Sedan \$1515
Dictator Eight 4-Door Sedan • \$1295 President Eight 4-Door Sedan \$1795

Studebaker also offers three lines of champion sizes from \$895 to \$1575. Prices at the Factory

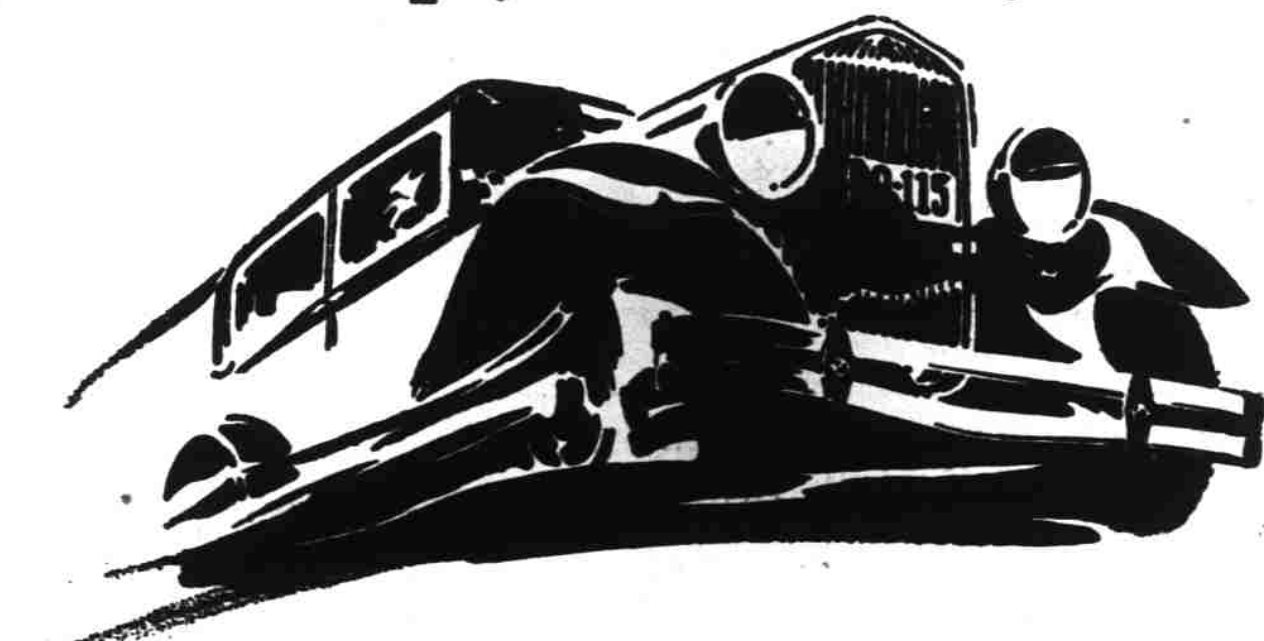
MARION GARAGE CO.

235 S. Commercial St.

Telephone 361

Time in "Studebaker Champions" Sunday evening 10:15 Eastern Standard Time. Station WFAA and NBC network

Victoriously Proved ... in performance, economy and value



during ESSEX Challenger week

Local Records

Challenger Sedan did 76 mi. per hour. Braked to a stop from 25 mi. per hour in 10 feet. Accelerated from 1-60 mi. per hour in 30 seconds and traveled 25 miles on a gallon of gasoline at 25 mi. per hour.

Prove What Every Essex Can Do

Come take a ride yourself. Know by personal experience what this brilliant New Essex Challenger can do. Its exploits of Challenger Week have swept the country. Essex owners led the demonstration. They were so widely followed and aided by public participation that we are continuing the invitation to Ride—Ride—Ride!

Every locality now knows Essex for the accomplishment of some great feat. Hills seldom attempted in any car were

climbed by Essex in high gear. Remarkable economy proofs were established. New acceleration marks were made.

Most important of all—Challenger Week convinced motorists everywhere that Essex represents the greatest dollar for dollar value in car satisfaction that the industry offers. We will gladly give you a personal demonstration of any of these proofs which Essex has established.

STATE MOTORS Inc.

Corner Chemeketa and High

Telephone 1000



BUILT BY BUICK

maker of more than 2,400,000 fine cars.

A great performer! Tens of thousands of glowing tributes from owners say it. The words, "Built by BUICK," maker of more than 2,400,000 fine cars, confirm it. And Marquette action everlastingly proves it. Drive Marquette—then buy this BUICK-built performer.

BUICK MOTOR COMPANY, FLINT, MICHIGAN
Canadian Factories Division of General Motors Corporation Builders of McLaughlin-Buick, Oshawa, Ont. Buick and Marquette Motor Cars

Marquette OTTO J. WILSON

388 N. Commercial

Telephone 220

WHEN BETTER AUTOMOBILES ARE BUILT . . . BUICK WILL BUILD THEM