



BUILDING with the BUILDERS

Grow With Salem. Helpful Information of Importance to Prospective Builders of Homes; News Reports of Building Activities in the Salem District.



SPANIARD TO DIRECT BRILLIANT PROGRAM

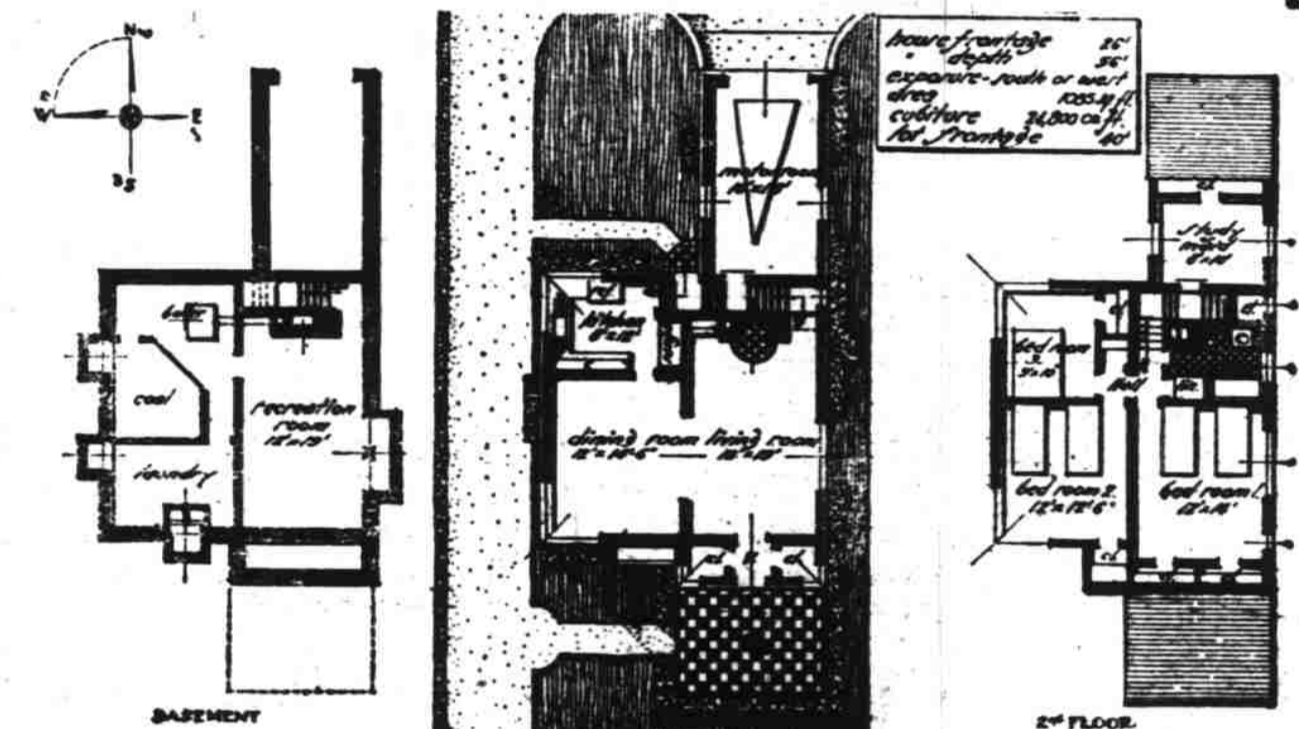
Enrique Arbos of Madrid Symphony Orchestra is Guest Conductor

In the early part of the last century the world of art was thrown into ecstasies by the creations of a very famous Spanish artist named Goya—who may be said to have done more brilliantly and with greater color what Charles Dana Gibson did for America. The women of Goya's pictures came down the century of art as "Goyescas." A few years ago, as the years of creative art, a Spanish composer, Enrique Granados, who was to be one of the victims of the "Sarsac" torpedoed in the English Channel in 1916, just after a visit to the United States, composed a piano suite inspired by the "Goyescas," which he called by that name. Later he used the music of the suite as the basis for an opera which was given its premiere in Barcelona the year the composer met his death.

The "intermezzo" from this opera, has been made famous as an orchestral selection the world over, largely through the brilliant interpretation given it by Enrique Arbos, for 25 years director of the Madrid Symphony Orchestra, and today one of the most noted of Europe's orchestra leaders, who visit the United States. The management of the Atwater Kent radio hour has secured the services of Director Arbos to conduct the Atwater Kent Symphony orchestra during the concert Sunday, January 5, at 6:15 Pacific standard time, over KGW, the fifth in the series of Atwater Kent concerts directed by world famous orchestral leaders. Aida Donicelli, Italian-American soprano, will be guest artist.

- The complete program follows:
1. Finale from Symphony No. 13 in G Major, Haydn, orchestra.
 2. Aria, Batti, Batti, from Don Giovanni, Mozart, Miss Donicelli with orchestra; Mr. Pasternack conducting.
 3. Madrigal, Chaminade, Miss Donicelli with piano.
 4. Intermezzo, from Goyescas, Granados, orchestra.
 5. Songs with piano: a. Beau Soir, Debussy; b. Stornellata Marina, Cimara, Miss Donicelli.
 6. Waldweis (Forest Murmurs) from Siegfried, Wagner, orchestra.
 7. Airs. Deplus le Jour, from Louise, Charpentier, Miss Donicelli with orchestra. Mr. Pasternack conducting.
 8. La Giomina, Sibella, Miss Donicelli with piano.
 9. Intermezzo, from Arabian Nights, Arbos, orchestra.
 10. Two settings of Tagore by American composers: a. Do Not Go My Love, Hageman, b. When I Bring To You Colored Toys, Carpenter, Miss Donicelli with piano.
 11. Ritual Fire Dance, from El Amor Brujo, De Falla, orchestra.

UP TO THE MINUTE—THE CHIC



By Duncan Hunter, Architect, New York

Off with the old—on with the new. Modern living demands—and will get if we are any judge—modern houses, in all that the term implies—perhaps more—we hope so. We are getting a bit tired in fact many of us are positive, bored when we look at the rows and rows of houses—all cities have them you know, and they do the country, too—houses copied—or supposed to be—after some bygone architectural style and falling evening catching the fleeting spirit of the old, they have none of the new and are "deader" than dead. They remind one of the passing of the old year valuable in that it gives one chance to start anew—like a release from a prison term—Let's go!

The modern trend is very definite in its proclamation for freedom and independence—a complete break-away we might call it from the old set types and forms and the adoption of practical motifs—in fitness to purpose, in key with the times.

The Chic is a modern house—practical, economical and fit to live in. It lists:

Basement—A large clear recreation room, which doubles the capacity of the living room. The laundry, heater and coal spaces.

First floor—Entrance vestibule with two coat closets, living room with fireplace and bookshelves, dining room, kitchen and a one-

Schwartz and family, L. Grice and Creede Owens were dinner guests of Mr. and Mrs. J. B. Best, New Years day.

North Carolina's football eleven averaged 34.6 points a game, smashing all Tar Heels records.

car motor room. Note compact arrangement of stairs and service. Second floor—Three bed rooms, a bath and a study or maid's room over the motor room. Note the ample closet space.

Ceiling heights—Basement, seven feet; first floor, eight feet, six inches; second floor eight feet.

Exposure—The plans as shown are for a lot facing south or west. For a lot facing north or east the plans should be reversed.

Lot size—House frontage 26 feet; side clearance, left 10 feet, right four feet; lot frontage, minimum 40 feet.

Construction—Frame with stucco finish; roof, slate; foundation, concrete; windows, steel casements in special arrangements, with integral screens; doors, wood to special details.

Interiors—Floors, wood, to be covered with linoleum; walls, plaster; bath room; composition tile; steam heat, gas and electric wiring.

Cubiture—24,800 cu. ft. Approximate cost—\$7600. Complete working plans and specifications of this house are available for a nominal sum. Address the Building Editor and refer to House H-109.

On The Air For Sunday and Monday

- KGW**
482.6 Meters, 620 Kcys.
PORTLAND, OREGON
9:30 to 10 a. m.—American Legion program.
10 to 11 a. m.—International Bible Students.
11 to 11:30 a. m.—Organ.
12 to 2 p. m.—NBC.
2:30 to 3:30 p. m.—Sunday concert.
3:30 to 4 p. m.—NBC.
4 to 4:15 p. m.—Studio program.
4:15 to 4:30 p. m.—Lental talk.
4:30 to 7:45 p. m.—NBC.
8:30 to 9 p. m.—Players.
9 to 9:30 p. m.—NBC.
10 to 11 p. m.—Little Symphony orchestra.
11 to 12 midnight—Fox Hollywood organ.
- KEX**
254.1 Meters, 1150 Kcys.
PORTLAND, OREGON
12 noon—Classical music.
1:30 p. m.—Classical recital.
2:30 p. m.—Fidelity Hour.
3 p. m.—Four on Broadway.
4 to 4:15 p. m.—Studio program.
4:15 to 4:30 p. m.—NBC.
4:30 to 5 p. m.—NBC.
5 to 5:30 p. m.—NBC.
5:30 to 6 p. m.—NBC.
6 to 6:30 p. m.—NBC.
6:30 to 7 p. m.—NBC.
7 to 7:30 p. m.—NBC.
7:30 to 8:45 p. m.—Amos 'n' Andy.
8:45 to 9 p. m.—Studio program.
9 to 10 p. m.—NBC.
11 to 12 midnight—Organ recital.
- KEX**
254.1 Meters, 1150 Kcys.
PORTLAND, OREGON
7 a. m.—Morning Sereaders.
8 a. m.—Anti-Fordy Time clock.
9 a. m.—Better Homes Hour.
9:30 a. m.—Studio program.
10 a. m.—Devotional services.
11 a. m.—Studio program.
12 noon—World Bookman and girls' orchestra.
1:05 p. m.—Uncle Robbin farm pictures.
1:15 p. m.—Popular program.
2 p. m.—Lyrle Hour.
3 p. m.—Homesteaders.
4 p. m.—Classical program.
5 p. m.—Popular program.
6 p. m.—Merrill and Merrifull.
7 p. m.—Popular program.
8 p. m.—Dance program.
9 p. m.—Jack and Jill dance band.
10:30 p. m.—Weather and police news.
- KOMO**
309.1 Meters, 970 Kcys.
SEATTLE, WASHINGTON
9 a. m.—Organ recital.
10 a. m.—International Bible Students' Assoc.
11 a. m.—Lucile Johnson, piano; G. Donald Gray, baritone.
11:15 a. m.—Plymouth Congregational church.
12 to 1 p. m.—NBC.
2 p. m.—Artistic ensemble; Perdin Koramo, tenor.
2:30 p. m.—NBC.
3:30 p. m.—Artistic ensemble; VeOna Sociofala, soprano.
4:30 p. m.—NBC.
5 p. m.—NBC.
6 p. m.—Artistic ensemble; Perdin Koramo, tenor.
7:15 p. m.—NBC.
8 p. m.—First Church of Christ, Scientist.
9 to 10 p. m.—NBC.
- KGO**
379.5 Meters, 790 Kcys.
OAKLAND, CALIFORNIA
1 to 12 noon—Grace Cathedral Services.
12 to 1 p. m.—National Youth Conference.
1 to 2 p. m.—Cathedral Hour.
2:30 to 4:30 p. m.—Sunday concert.
4 to 4:30 p. m.—Musical Mysterians.
4:30 to 5 p. m.—Gems of the Drama.
5 to 6:15 p. m.—New service.
6:15 to 6:45 p. m.—"Songs Without Words."
6:45 to 7:15 p. m.—Stanlasas Bem's Little Symphony.
7:15 to 8:15 p. m.—Sunday at Seth Parker.
8:15 to 9 p. m.—The Pilgrims Guide.
9 to 10 p. m.—The Gay Classics.
10 to 11 p. m.—The Gay Classics.
- KGW**
482.6 Meters, 620 Kcys.
PORTLAND, OREGON
7 to 8 a. m.—Morning Merry.
8 to 9 a. m.—NBC.

Dinner.
12:30 p. m.—Grain, fruit and vegetable report.
12:35 p. m.—Orchestra: Hayden Morris and G. Donald Gray.
1 p. m.—Mary Blake's recipe talk.
1:15 p. m.—Orchestra: VeOna Sociofala, soprano, and Greenwood Mitchell, baritone.
2 p. m.—NBC.
3 p. m.—Vocal ensemble recital.
4 p. m.—Mining stock quotations.
4:15 p. m.—Kiddies' program.
4:45 p. m.—Stock, bond and grain quotations.
5 p. m.—Artistic ensemble with Fred Lynch, tenor.
6 to 8:30 p. m.—NBC.

8:45 p. m.—News flashes.
9 to 9:30 p. m.—NBC.
10 p. m.—Univ. of Wash. Educ. Hour.
11 p. m.—Olympic Hotel dance orchestra.
12 to 12:30 a. m.—Organ recital.

The Toronto hockey team is to visit Berlin for two European championship games this winter.

The shuffleboard club at St. Petersburg, Fla., has nearly 1,000 members.

Radio Service

We Can Improve That Old **RADIO**

or we can sell you the finest low priced **RADIO** on the market

CROSLEY

SCREEN GRID

Console or Table Model

SEE

Radio Headquarters

JUST RADIO

175 South High Phone 1161

STATEMENT OF CONDITION

State Savings & Loan Association

as of December 31, 1929

RESOURCES	LIABILITIES
Cash on hand and due from banks	Installment Stock
Real Estate Loans	Stock
Stock Loans	Prepaid Stock
Real Estate	Fully Paid Stock
Furniture and Fixtures and Equipment	Investment Stock
Accrued Interest	Total Deposits on Stock
Due from Agents	Incomplete Loans
Deferred Debit Items	Loan Redemption Fund
	Contingent Fund and Other Reserves
	Undivided Profits
\$391,179.62	\$391,179.62

State Savings & Loan Association

First National Bank Bldg.
Carl D. Gabrielson, Pres. J. J. Elliott, Sec.
After Jan. 10th, 1930, 142 S. High St., Salem, Oregon

BATTERY RADIOS

We have eleven good Battery Radios For Sale at unusually low prices.

It is Clearance Time and we are cleaning house.

Priced **\$15** and Up

We Are Closing Out All Our Hardware Stock Take Advantage of Our Prices.

Square Deal Hardware Co.

We service all types of radios.
220 N. Commerical St. Phone 1650

NOW—

Is the Time To Do

Interior Painting

We have an excellent line of **Certainteed Paints**
Call us for price and selection

J.W. Copeland Yards

West Salem Telephone 576

DEFENDABLY SERVING THE LUMBER CUSTOMER

What of 1930?

The same steady forward drive which has put Salem in the fore in recent years is predicted for the next twelve months.

Constructive Activities - New Residences - New Buildings - Better Buildings.

In anticipation we are ready to supply the demands and needs for the coming year.

LUMBER

and all building materials

GABRIEL POWDER & SUPPLY CO.

Capitol and Union Telephones 2248-728

BEAUTIFUL SHINGLES

Roof beauty is one of the essential requirements of a saleable home today... Pioneer Yosemite Rock Surfaced Shingles give real beauty and back it up with real value and roof protection!

Then, too... they cost less to apply and due to their non-fading Yosemite rock colors, they never need paint or stain... they serve for years without repairs or expense of any kind!

These are reasons why they are the most economical as well as the most beautiful shingles you can buy... for new homes or for re-roofing right over the old wood shingles.

Dicor
Manufactured by **PIONEER PAPER COMPANY, Inc.**
Established 1888
Los Angeles Portland San Francisco Salt Lake
SOLD BY
Cariton Pioneer Roofing Co.
Call or telephone for estimates
A. B. CHRISTENSON, Mgr.
170 N. Front St.—Phone 487
Salem, Oregon
Authorized Application Agents