

Over Four Million is Expended in Oregon by P.E.P. Firm

RAPID GROWTH EXPERIENCED BY COMPANY

Far Reaching Plans for New Year Outlined by Its Officials

The contribution of the Portland Electric Power company to the continued progress and prosperity of Oregon during 1930 is represented by a construction and betterment program in its light and power department which will mean the distribution of over \$4,300,000 for material, supplies and labor in this section. This is the largest industrial budget announced by any institution in Oregon considering the size of the territory within which it will be expended.

President Franklin T. Griffith of the company has also announced that in addition to the construction and improvement program for next year the company will expend almost \$15,450,000 more in its operating area next year, for operating expenses, taxes, interest, dividends and in the retirement of bonds, so that the grand total of expenditures of the Portland utility for next year will reach about \$19,750,000.

Items Allocated

Under the construction and betterment program, the following items have been allocated thus: Increase and betterment of generating facilities \$2,601,750

Improvements and increasing capacity of substations 240,531

Additional high tension transmission lines 238,350

Additions and betterments to distribution system 1,225,264

Under the program for other general expenditures, the following items are included:

Operating expenses, of which \$6,000,000 is for payrolls \$8,000,000

Taxes of all kinds 1,600,000

Interest on dividends 4,250,000

Retirement of bonds 1,600,000

In the 1930 budget for construction etc. the large items of the generating program include an extension of the present station "L" steam plant, the main feature of which is the installation of a new steam turbine with a rated capacity of more than 46,000 horsepower. This work is already under way and the foundations are in the course of preparation. The new steam unit will be installed and ready for operation prior to the low water season of 1930, and, together with the steam plant of the company now in operation, will provide ample capacity to care for increase in load on the system even though the year 1930 should be one of extreme drought, as the past year has been. The new steam unit will be of the most modern and efficient high pressure type.

During the summer of 1929 the company placed foundations for a new hydro electric turbine at its water power plant on the Clackamas river at Oak Grove, and during the year 1930 the Oak Grove power house will be extended and there will be installed therein an additional hydro electric turbine having a rated capacity of 40,000 horse power. The installation of this unit constitutes the second step in the ultimate complete developments of the Oak Grove plant which will eventually have a generating capacity of nearly 150,000 horse power.

With the two new turbines ready next year the installed generating capacity of the company will total 268,000 horse power. In this connection, President Griffith stated, a few days ago, that "It is our purpose at all times to maintain capacity well in advance of the requirements of the territory we serve."

Substitutions to be Better

Another important item in the budget for next year relates to the substitution facilities, and the expenditures to be made for the betterment of these facilities are to take care of the increasing demands for service which even at the present time are of such magnitude that the company feels justified in anticipating a continued substantial business growth and is therefore making preparations to be "ready to serve."

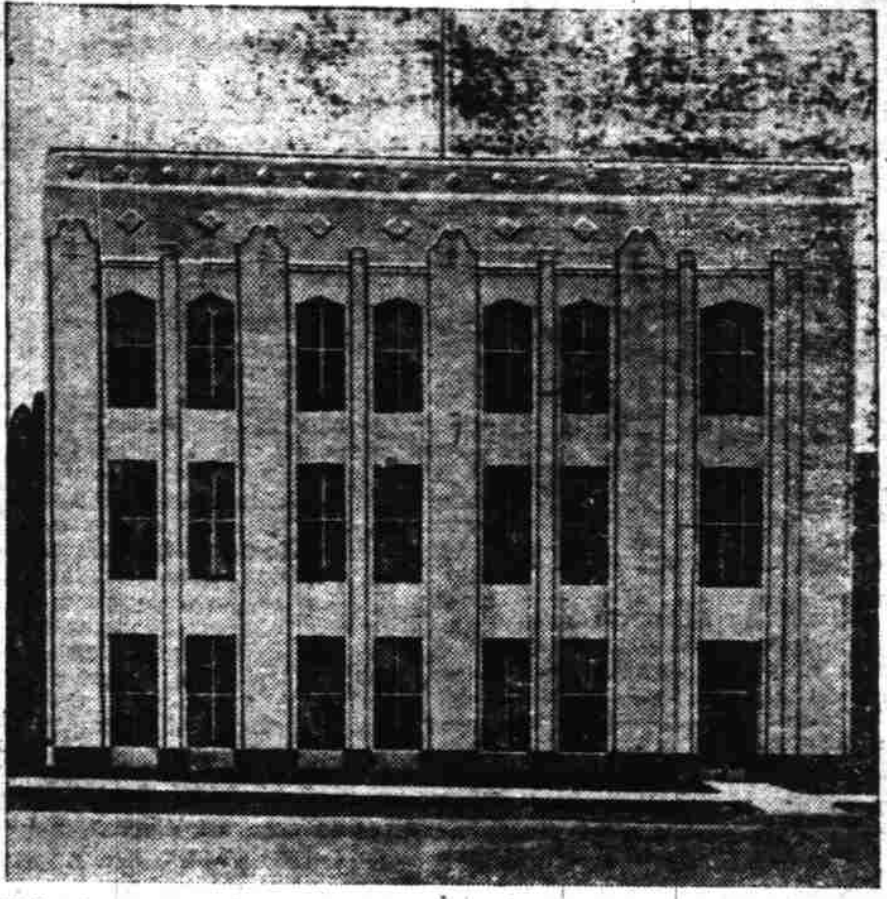
Because of increasing electric load in the Willamette valley from Oregon City to Salem, it is deemed necessary to strengthen the transmission facilities feeding that part of the system and a new steel tower transmission line will be constructed between the River Mill hydro electric plant of the company at Estacada and Beaver Creek, a distance of over ten miles. This improvement will operate directly toward growing of service for the rapidly becoming industrial, commercial and domestic requirements in the valley section.

There will also be an increase in transmission facilities between Portland and St. Helens, largely occasioned by the construction at St. Helens of the \$2,000,000 plant of the Fir-Tex Insulating Board company, now in process of erection.

The expenditure of approximately \$1,250,000 for betterments in the distribution system will be the usual expenditures for that purpose to take care of changing conditions of load and increasing business, and this item constitutes one of the most important features of the 1930 budget from the standpoint of the various types of consumers.

The Willamette valley division is receiving high recognition as one of the most promising re-

NEW 'PHONE HEADQUARTERS



This beautiful three-story building is soon to house the offices and plant of the Pacific Telephone & Telegraph company in Salem. Including the building and the plant improvements, \$800,000 is being expended in this city by the firm.

\$300,000 IS EXPENDED BY P. E. P. REPORT

Power Company Active in Expansion During Past Year in Valley

The total expenditures of the Portland Electric Power company for additions to their power plant and distribution system in their Willamette Valley division for the year 1929 amounted to approximately \$300,000.

This was divided as follows: New line extension and additions and improvements to existing distribution lines to improve service, or increase capacity \$95,000.

A 10,000 kilowatt synchronous condenser installed in the power house at Mill and Liberty streets to improve power factor and thereby increase capacity of transmission lines, an improve voltage regulations, \$60,000.

A 12,500 kilowatt transformer installed in the outdoor high tension switch station at Mill and

Liberty streets to supply additional transformer capacity between the high tension 57,000 volt lines and the 2300 volt and 10,000 volt distribution circuits, \$56,000.

Warehouse Costs \$25,000. New concrete warehouse and office building on North Liberty street at North Mill Creek to house line department offices, shops and warehouse, \$25,000.

Addition to substation building at Mill and Liberty streets to house extension of 2300 volt switching apparatus, \$13,000.

Outdoor substation in the Morningstar district to improve service and supply new service in that territory, \$9,500.

Private telephone system for communication between power plants and office of the company in Portland and Salem, \$9,500.

A 500 volt direct current generator to supply service for elevators in Salem, \$3,000.

Automatic switching equipment in Mt. Angel substation to control circuit to Woodburn and Gervais, \$3,500.

Trucks and passenger automobiles, \$3,500.

Automatic switching equipment in power house at Mill and Liberty streets, Salem, \$560.

As stated, some of the expenditures were to provide additional capacity to handle ever increasing load, whereas, other large portions of the above expenditures were to improve the quality and reliability of the service supplied by the company to its customers.

In the latter case, no corresponding increase in revenues is provided due to these expenditures and are justified solely on the anticipated increase in revenues from existing customers through their increased use of the service.

EGG PRODUCTION IS ABOVE FORMER YEAR

Production of eggs is slightly in excess of that for this time last year, W. F. Priebe, president of the United States Egg Society, told the recent national economic conference. Prices have been 12 per cent higher.

"As to poultry production," Mr. Priebe said, "we have an increase of about 10 per cent to 15 per cent, with average selling value the past six months at probably 10 per cent lower than last year. The prospects for the next six months, compared with the corresponding period this year, are that we shall have 10 per cent to 15 per cent more poultry on farms and we believe prices will be somewhat lower next year than they have this year."

STREETS WIDE
Salem streets are 99 feet wide.

MILES LINEN COMPANY HAS LARGE OUTPUT

Local Plant Runs 24 Hours Per Day for Entire Twelve Months

The Miles Linen company began the manufacture of salmon twine and shoe thread in the fall of 1925. Since that time other lines have been added and production increased in all departments. During the past year the plant has run to its full capacity 24 hours a day, stopping only for Sundays and holidays, and has worked on orders only. The outlook for business bids fair to keep the plant in full production.

The machine installed about a year ago for the making of fish nets has operated at full capacity from the time it began.

Much Flax Required
Total amount of flax fibre required in the manufacture of the year's products ran nearly 400,000 pounds. In addition to the

salmon twine and shoe thread considerable quantities of sack twine, mattress twine and special twines and yarns were produced. By having this variety of products, the different grades of flax produced here can be used by this plant from the very best down almost to the lowest.

Employment was furnished to an average of about 75 workers, the pay roll for the year being approximately \$75,000. To those closely associated with the industry there is no question but that the total crop of flax grown in this valley can be manufactured here and marketed profitably.

The officers of the Miles mill are H. R. Crawford, president; F. J. Gilbrath, manager; L. L. Laws, secretary-treasurer.

Dog Returns to Roseburg Home From California

ROSEBURG, Ore., Dec. 31.—(AP)—Miggs is just another dog but a good one. Miggs's owner consented to give him to a friend who later went to California to live, taking the dog with him. Miggs went to California, a thousand miles from his original home.

But the dog wasn't impressed with the south so he tramped back to Roseburg. His paws were ragged and he was hungry.

Telephone Company Will Spend Huge Sum in City

New Central Office Chief Item for Which Money is to Be Expended During Two Year Period

Approximately \$800,000 will be spent in Salem by the Pacific Telephone and Telegraph company during the two-year period ending January 1, 1931, according to C. C. Aller, manager here for the company. Chief among the items of improvement is the construction of the new central telephone office building and the installation of a mechanical dial telephone system.

The growth of the telephone exchange in Salem has been rapid and consistent, Mr. Aller said. The first exchange was established in 1884 with but ten or 12 subscribers, and the service has grown until today there are 5776 telephones in service in the city. Constant additions to inside and outside plant equipment have been necessary. The particular increase in demand for telephone service during the past year and the anticipation of even greater growth, have necessitated the further expenditures now being made—the greatest expenditures in the history of the Salem exchange.

\$120,000 for Line Work
During the past year approximately \$120,000 has been spent by the company for improvements to outside telephone lines, underground conduit and cables and the elimination of duplicate pole lines within the city limits. Of this figure, approximately \$40,000 was spent for the laying of an underground cable and conduit along the Fair Grounds road to the city limits.

The new telephone building, which will be occupied by the business office about February 15, was recently completed by the company at a cost in excess of \$184,000. Into this building will go more than \$300,000 worth of new dial telephone equipment, which, added to other outside plant installations and additions

in connection with the new mechanical office, will bring the total for the new building to nearly \$600,000.

The estimated expenditures in 1930 for outside plant are \$80,000 and for other routine work, \$60,000.

Another project, not included in the expenditures for Salem, but which will directly benefit every telephone user in the city, is the laying of a 266 pair telephone underground cable between Salem and Portland. This cable, containing 36,000 miles of wire, will be in operation not later than July 1, 1930. Its cost, including the trench and conduit in which it is contained, amounts to more than \$1,000,000, Mr. Aller said.

120 Regular Employees
At the present time there are 120 regular employees of the telephone company in the city, who draw an annual salary of \$160,000, and 55 temporary employees with an estimated half-year salary of \$42,000, according to Mr. Aller.

"The expenditures being made in Salem this year and next are essential to our policy of providing the best possible telephone service to the customers in this city," Mr. Aller said. "The growth of the Salem exchange has been almost phenomenal during the 45 years of its existence, and we expect it to continue to grow. We are spending at the present time more than \$800,000 for improvements in our service, and it is entirely possible that this figure will be double for further improvements in the next five years."

CHERRIAN GROUP IS NOW IN 16TH YEAR

Nothing Sporadic in Work of This Organization; In Many Marches

The Cherrians, the oldest community service club in the city, has a record of 16 unbroken years of service to Salem. Unlike many so-called "booster" groups, they have maintained their identity and organization continuously and there has been nothing sporadic about their work.

Official hosts for the city on occasion of visits by out-of-town groups and prominent citizens of other communities, the Cherrians have also reached out hands of welcome and good will to other cities with visits and participation in their festive affairs. Last year the organization marched in the Sunset trail parent parade at Eugene. The white uniformed marching body is also a familiar sight in the Rose Festival parades in Portland, although missing last June from the line of march, they will resume their participation this year.

C. F. Glese has been King Bing the past year. Grover Hillman is the King Bing-elect and C. E. Wilson is secretary. The inauguration of the new King Bing will be held the night of Tuesday, January 7, at the Marion hotel.

Fossil Remains Are Unearthed

YAKIMA, Wash., Dec. 31.—A number of fossil bones have been uncovered during work on the Toppenish-Goldendale road grade on Toppenish ridge about eight miles south of here. Most of them were in a small area about ten feet below the surface in volcanic ash overlying a rock formation.

The bones, worked on by E. T. Peters, contractor, said, evidently made up a complete skeleton of an ancient animal that must have been of immense size. The bones extended 40 feet and were compared to those of any present day domestic animal.



When Eugene O'Neil told us that "Life is a tragedy" (even though he did add "Hurray") we are inclined to believe that he had forgotten about COMRADESHIP

A glad "hello" and a hearty grip
Are the first beginning of comradeship;
And Father Time in his kindly way
Binds us closer day by day.

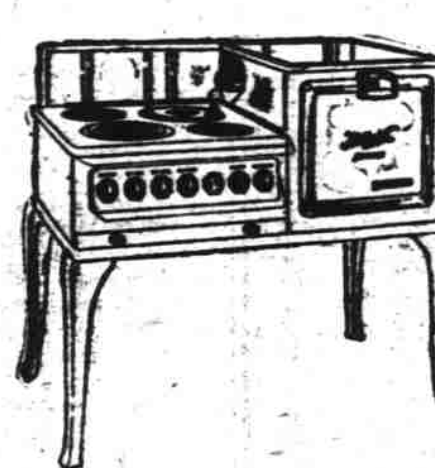
We grow from the smile and the kindly hand
To know each other and to understand;
And I hope some day you will find in me
The faithful friend I want to be.

—Electricity.

Start the New Year right by employing some of my Silent Servants-Clean-Efficient-Economical



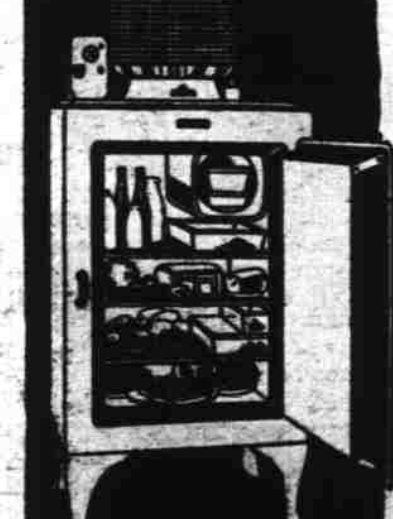
Cook Automatically



We have never had an opportunity to show electric ranges with so many real worth while features as at present.

Visit our show floors and see for yourself what is meant by "Automatic Cooking."

You Need This



Have you looked into the protection you can give the family by allowing General Electric to mobilize his army in your kitchen and stand guard over the most vital thing in their life—FOOD?

He never rests—His hours are 24 every day.

Resolve to do it With Electricity in 1930

Portland Electric Power Co.

237 No. Liberty

Salem, Ore.