



BUILDING with the BUILDERS



GROW WITH SALEM

Helpful Information of Importance to Prospective Builders of Homes
News Reports of Building Activities in the Salem District

DALLAS KIDDIES GREET SANTA

Santa Claus Greets Dallas Boys and Girls Friday and Saturday

DALLAS, Dec. 21.—Dallas boys and girls, both large and small were out in full force to greet Santa Claus on his visit here at 4 o'clock today, at the Majestic theater. This visit of Santa Claus and viewing of the pictures of his work shop in the north land was made possible through the cooperation of the Capital Journal of Salem, and George W. Gould, manager of the local theater. That the affair was enjoyed and appreciated by the youngsters was amply demonstrated.

Again on Saturday night the children will have the opportunity of seeing Santa Claus, when Dallas Fire Department will be given on the court house square. Christmas carols will be sung under the large brilliantly lighted tree that has been on the grounds all week. Six hundred sacks of candy will be distributed to the children, the candy being furnished by Dallas merchants, the sacks and filling of them having been done by the American legion auxiliary. And on Christmas eve, the committee from the Knights of Pythias lodge will distribute baskets and presents to all the families and children who would not otherwise be able to enjoy the holiday season. Throughout the year the firemen have been repairing toys for this occasion, and the members of the Pythian Sisters have been dressing the dolls. With special programs at all the churches and family gatherings, there is every indication of Christmas cheer for everyone.

Dallas Matron Passes Away

DALLAS, Dec. 21.—Mrs. Josephine Griffin Cannard, died at the Dallas hospital, Wednesday, December 18, where she had been taken for a second operation following an illness of two months. Mrs. Cannard was born at Suver and was 51 years of age. A daughter, Mrs. Laird W. Woods, and son, Robert of Dallas, survive, also a son, Joe of Salem. A brother and sister in Los Angeles, and a sister in Portland also survive. Services were held at the Henkle and Thomas chapel, 5 o'clock Friday, with Rev. O. D. Peterson of the Christian church officiating.

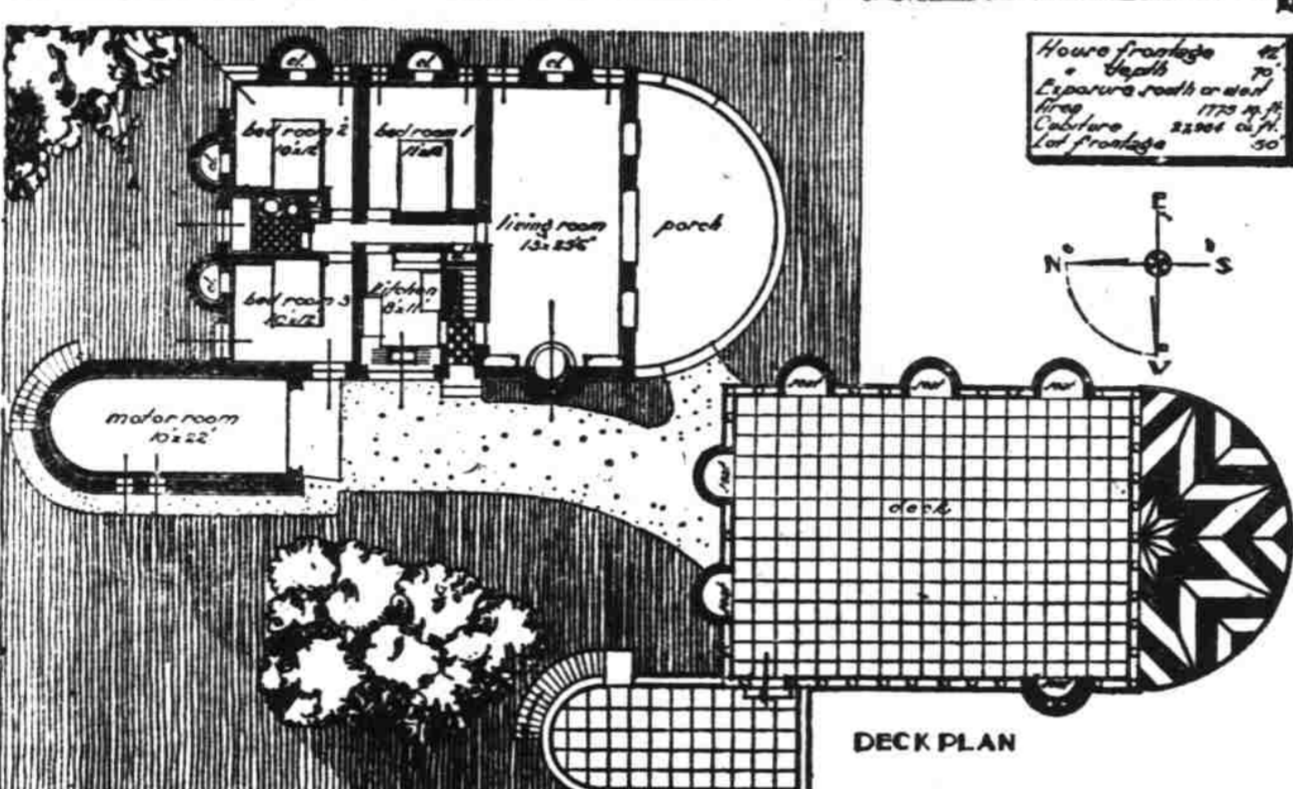
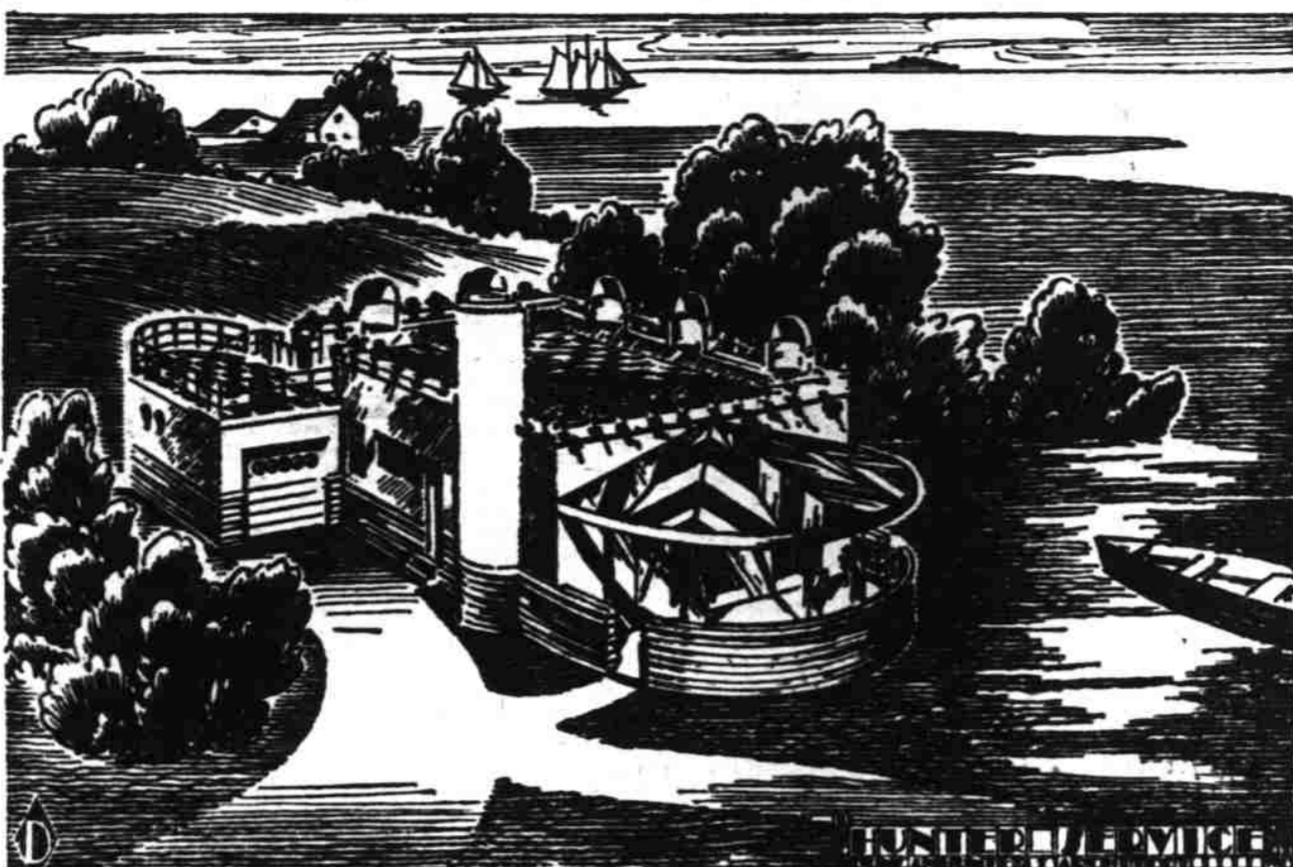
Turner O. E. S. Elects Officers

TURNER, Dec. 21.—New officers elected at the last meeting of Victoria chapter, O. E. S., were worthy matron, Emma Peterson; worthy patron, Herman Kelly; associate matron, Mary Kelly; associate patron, Charles Colvin; secretary, Elsie Lewis; treasurer, Bessie Colvin; associate conductress, Vivian Enslay. Other officers will be appointed and the installation will take place at the next regular meeting, December 23 at the Masonic hall.

ELECT OFFICERS

GERVAIS, Dec. 21.—The St. Rita's Altar society elected the following officers at their meeting held at the home of Miss Mary Mangold, Wednesday afternoon, Mrs. W. C. Snyder, president; Mrs. C. W. Cutsforth, vice-president; Miss Mangold, secretary-treasurer. The ladies tied two comforts during the afternoon, and when the work was finished Miss Mangold and Mrs. J. A. Ferachweiler as assistant hostess served refreshments.

EUROPEAN FLAVOR—THE SHORE



THE SHORE HOUSE H-108

By DUNCAN HUNTER, Architect, New York
America, which should have been the birth place of the modern style, lags far behind Europe in awakening to the possibilities it offers. The steel skeleton skyscraper is an American invention as is also the airplane, the machine gun and numerous other devices. Europe has a rich heritage in historic styles, America has not, therefore it would seem that America offers the suitable background for the development of a new Architectural style—The Modern. New materials, new methods of progressive spirit and money are at our elbow, we should outstrip Europe. Yet—on the other continent we find buildings of glass and metal where we still use wood, the gain the benefits of sunshine and outdoor living where we couple ourselves in dingy interiors behind "antique" glass. We fuss around the geogaws and gingerbread, sit in uncomfortable "period" chairs and try to tune ourselves in with a Medieval atmosphere, when what we really want is—"liberty" freedom for archaic restraint, rules and regulations and the opportunity to do as we please. This means simple, modern surroundings with large comfortable chairs, windows of size to let in the sunshine and to

admit of expansive view, good simple decorations and furnishings—all in all—an appropriate and distinctive place to live in.
The Shore is such a house and provides for outdoor living. The porch roof is glass and metal. It lists thus—
Ceiling heights—Cellar, seven kitchen and bed room—Laundry, heater and general space, cold room.
First floor—Living room, kitchen, three bed rooms, a large glass and metal roofed porch and a one car motor room.
Deck—The entire top of the house serves a roof garden deck.
Ceiling heights—Cellar, seven feet; first floor, eight feet six inches.
Exposure—The plans as shown are for a lot facing south or west. For a lot facing north or east the plans should be reversed.
Lot size—House frontage, 42 feet; side clearance, left 2 feet; right 6 feet; lot frontage, minimum 50 feet.
Construction—Hollow tile with stucco finish; decks, canvas; porch roof glass and metal; foundation, concrete; windows, metal casements with integral screens; doors, wood, to special details.
Interiors—Floors, linoleum; walls and ceilings, plaster; kitchen, composition tile; bath room, composition tile; steam heat, gas and electric wiring.
Cubiture, 27,984 cu. feet; approximate cost \$9,500. Complete working plans and specifications of this house are available for a nominal sum. Address the Building Editor and refer to House H-108.

IT MAY HAPPEN in the next mile.
A DISASTROUS, costly, motor car accident. And not your fault.
Enjoy motoring. Don't worry. Be protected against all the insurable motoring hazards with Automobile Insurance written by The Metropolitan Casualty Insurance Company of New York.
Salem Representative
W. G. Krueger
147 N. Com'l
PHONE 217

DALLAS HIGH DEBATE TEAMS ARE CHOSEN

DALLAS, Dec. 21.—The teams which will represent Dallas high in debate this year have been picked and are beginning to prepare their work under the guidance of Mrs. Whitworth. The affirmative will be Barbara Elliott and Alice Wiens and the negative side is upheld by Margaret Ellen Kelley and Otto Fisher. The alternates are Doris Newbill, Rachele Uglow, and William Garner. The high school students were guests at a program given by the public schools today in the high school auditorium. The grades have been working several weeks on this program and it was very interesting. The order of the program was as follows: a short play, a song by the Heibert twins, a play by the 1-B class, a song by six boys from the 2-A and then a song by the whole class a play by the 2-B, and the last part was an operetta entitled "Helping Santa Claus."

ATTEND MUSICAL
GERVAIS, Dec. 21.—Mr. and Mrs. G. T. Wadsworth and sons, Walter and Homer, Mrs. M. D. Henning, Mrs. S. D. Manning, Mrs. G. J. Miosan, Mrs. Sam H. Brown, Mrs. Helena Estudillo and the Misses Gertrude Weiss and Helen Hiller drove to Woodburn Wednesday evening to witness the play, "Madcap Queen" which was put on by the women's club of that place in the high school auditorium. Miss Fern Wadsworth, who teaches in the Woodburn schools, played a leading role.

When you order the Statesman it is delivered to you by the little merchant in your neighborhood.

IF IT'S FRUIT TREES
SEE THE Fruitland Nursery
25 yrs. in business—
A. J. Martin, Prop.
A fine lot of cherry seedlings, also leading varieties of fruit and nut trees.
Sales yard east side of Armory
Phone 1775M

Aletha Boulden Dies at Dayton

DAYTON, Dec. 21.—Aletha Boulden, the 18-year-old daughter of Mr. and Mrs. T. A. Boulden, passed away at the home of her parents in this city at nine a. m., Thursday. She leaves besides her parents a brother, Marion. Funeral services will be held Sunday at two p. m. from Macy chapel in McMinnville. Aletha has been in failing health for the past three years.

Cascara Trees Are Cultivated

BROWNSVILLE, Dec. 21.—(AP)—The possibility of cultivating cascara trees as a new Oregon industry is being determined here by a local farmer, Thomas Miller, who has a two acre planting now four years of age from wild seedlings he has set out. With the wild supply of cascara bark diminishing and the demand from the drug trade remaining steady Miller believes this crop can be made to produce \$1,000 an acre at the end of ten years. The farmer has asked the state college to aid him in plans for pruning to recover the same drug element found in the mature bark.

Amalgamated Mining Corporation
(An Oregon Corporation)
Capital Stock \$500,000
par value \$1 Non-Assessable
100,000 Shares Available for Subscription
Money from this Stock sold is to be used to complete the road and purchase machinery.
No salaries are to be paid to officers until mine is on a paying business.
For Full Information Address
The Amalgamated Mining Corporation
817 Postal Bldg.
Portland, Oregon
Or R. H. Tyson,
Woodburn, Oregon

FUNERAL RITES HELD
DAYTON, Dec. 21.—The funeral of Alva Andrus was held at Macy's chapel in McMinnville Thursday at 2 p. m., with burial in the Dayton I. O. O. F. cemetery. Mr. Andrus, a one time resident of this city, and a brother of Mrs. James Wakefield, passed away at the home of another sister, Mrs. Wm. Miller of Gaston. The deceased has been a sufferer for many years due to a mining accident.

Mutual Savings and Loan Association
A Salem Institution Organized in 1910
Place your savings with us
Let us finance your home on weekly or monthly payments
142 South Liberty Street

Within Your Grasp
Often times the things you wish for most and the things you need badly are within your grasp and you are not aware of it.
The cost of materials to remodel your home, add that extra room, or even build a new home is often much less than one would think.
Let us give you figures on materials you might need.
LUMBER
and all building materials
GABRIEL POWDER & SUPPLY CO.
Capitol and Union Telephone 2248-728

Christmas Gift Suggestion
Give a Year Subscription to The Oregon Statesman
COUPON
To THE OREGON STATESMAN: SALEM, OREGON.
Please send your paper Daily and Sunday for one year to
Name _____
Address _____
Ordered by _____
Subscription Rates in Advance:
One Year by mail \$4.00; outside of Oregon \$5.00.
By carrier service one Year \$5.50.

NOW—
Is the Time To Do
Interior Painting
We have an excellent line of
Certainteed Paints
Call us for price and selection
Copeland's Lumber Yard
West Salem Telephone 576
DEPENDABLY SERVING THE LUMBER CONSUMER

BEAUTIFUL SHINGLES
Roof beauty is one of the essential requirements of a desirable home today... Pioneer Yosemite Rock Surfaced Shingles give real beauty and back it up with real value and roof protection!
Then, too... they cost less to apply and due to their non-fading Yosemite rock colors, they never need paint or stain... they serve for years without repairs or expense of any kind!
These are reasons why they are the most economical as well as the most beautiful shingles you can buy... for new homes or for re-roofing right over the old wood shingles.
W. G. Krueger
Salem Representative
147 N. Com'l
PHONE 217

IT IS HERE!
The OIL
that takes the carbon out of your car.
HILENE
will do all that and more. It will INCREASE GAS MILEAGE—SEAL THE RINGS—Increase speed and power and KNOCK OUT THE KNOCKS.
VICK, STEBBINS CO., Jobbers
LIST OF DEALERS
SALEM
MILLER TIRE SERVICE "Russ Smith"—197 S. Commercial St.
HERSCHBACH GARAGE S. Commercial St. and Vista Ave.
FARRISH GARAGE 600 N. Capitol St.
GUSTS REPAIR SHOP 1610 N. Commercial St.
SCHREIBER AUTO WRECKING 1005 N. Commercial St.
NOAH ARK SERVICE STATION 1/2 Mile N. Pacific Highway
SCOTT'S SERVICE STATION 1000 S. 12th St.
RAMSEYER BROS. GARAGE 206 N. High St.
GREASE SPOT SERVICE STATION South Liberty Street
IOWA GARAGE 305 Chemeketa St.
PERRANT SERVICE STATION 2000 Fairground Road
MITCHELL SERVICE STATION 1 Mile Fruitland Road
SILVERTON ALLEN BROS.
MONMOUTH SERVICE STATION
RIDDLE SERVICE STATION
MT. ANGEL SCHREIBER & BROS.
MT. ANGEL SERVICE STATION
All Who Know Use HILENE