

TED ROY WILL SING ON BIG BROADCAST

Oregon Singer, Now in Philadelphia Will Be Heard Next Sunday

Two young American singers, one discovered in the east, the other on the Pacific coast, and brought out of obscurity by the Atwater Kent foundation, will feature the Atwater Kent radio hour, at 9:15 Sunday evening, October 6. They will be assisted by the Atwater Kent concert orchestra.

The stories of these young artists—Miss Hazel Arth, formerly a Washington choir singer and Ted Roy, the "Singing Blacksmith" of Corvallis, Oregon—are typical of stories of other finds made in many parts of the United States since the Atwater Kent Foundation began its quest for new radio singers. It is felt that radio listeners who have already heard these young singers, and whose voices contributed to their recognition by the foundation, will be interested to note the growth in the development of their art in the months since they attained national distinction as singers.

Miss Arth, the young Washington contralto, who won the 1928 audition (\$5,000 cash and two years' music tuition), was kept busy throughout last winter responding to calls from the most distinguished audiences in the Nation's capital and eastern cities. She received the foundation's gold medal in the white house from the hand of Mrs. Calvin Coolidge and was soloist in the official concert at the inauguration of President Hoover. She has now established herself in New York, to prepare herself for even larger things.

There is real romance in the aspiration to fame of young Ted Roy, tenor. He was paying his way through college by working at the blacksmith's forge in vacation time when he captured the second award of \$2,000 cash in the 1927 audition. He has since devoted himself assiduously to study, serving as staff artist with the Portland Oregonian's radio station, KGW, and has just located in Philadelphia, to put himself under the guidance of eastern teachers.

The program will be heard through the coast to coast network of radio stations served by the National Broadcasting company.

Two young American singers, one discovered in the east, the other on the Pacific coast, and brought out of obscurity by the Atwater Kent foundation, will feature the Atwater Kent radio hour, at 9:15 Sunday evening, October 6. They will be assisted by the Atwater Kent concert orchestra.

The stories of these young artists—Miss Hazel Arth, formerly a Washington choir singer and Ted Roy, the "Singing Blacksmith" of Corvallis, Oregon—are typical of stories of other finds made in many parts of the United States since the Atwater Kent Foundation began its quest for new radio singers. It is felt that radio listeners who have already heard these young singers, and whose voices contributed to their recognition by the foundation, will be interested to note the growth in the development of their art in the months since they attained national distinction as singers.

Miss Arth, the young Washington contralto, who won the 1928 audition (\$5,000 cash and two years' music tuition), was kept busy throughout last winter responding to calls from the most distinguished audiences in the Nation's capital and eastern cities. She received the foundation's gold medal in the white house from the hand of Mrs. Calvin Coolidge and was soloist in the official concert at the inauguration of President Hoover. She has now established herself in New York, to prepare herself for even larger things.

There is real romance in the aspiration to fame of young Ted Roy, tenor. He was paying his way through college by working at the blacksmith's forge in vacation time when he captured the second award of \$2,000 cash in the 1927 audition. He has since devoted himself assiduously to study, serving as staff artist with the Portland Oregonian's radio station, KGW, and has just located in Philadelphia, to put himself under the guidance of eastern teachers.

The program will be heard through the coast to coast network of radio stations served by the National Broadcasting company.

HISTORIC COMPANY OF OPERA REVIVED

LONDON, (AP)—A rejuvenated Covent Garden opera company is being organized for an extensive fall tour.

For the first time in its long history the organization will be a year-round one instead of a ten-the London season. John Barbir, a 29-year-old English composer and conductor, has been named musical director of the permanent organization.

"We are going to build up a genuine national opera company with headquarters in London, and the keynote of the movement is going to be youth," said Lieut. Col. Eustace Blois, one of the directors.

For the first time in many seasons Covent Garden closed its London season without suffering a loss and Lieutenant Colonel Blois said he hopes that the new organization will provide a year-round financial success. The company has started rehearsals on the repertoire with which it will start its road tour in September, opening in Halifax.

In the past Covent Garden opera has been a going organization only during the ten weeks of its London stay, each year necessitating a complete reassembling of staff members.

The National British Opera company, which had to give up its ambitious program of taking opera to English cities outside London because of financial difficulties, will turn over part of its organization to the enlarged Covent Garden company.

For the first time in many seasons Covent Garden closed its London season without suffering a loss and Lieutenant Colonel Blois said he hopes that the new organization will provide a year-round financial success. The company has started rehearsals on the repertoire with which it will start its road tour in September, opening in Halifax.

In the past Covent Garden opera has been a going organization only during the ten weeks of its London stay, each year necessitating a complete reassembling of staff members.

The National British Opera company, which had to give up its ambitious program of taking opera to English cities outside London because of financial difficulties, will turn over part of its organization to the enlarged Covent Garden company.

For the first time in many seasons Covent Garden closed its London season without suffering a loss and Lieutenant Colonel Blois said he hopes that the new organization will provide a year-round financial success. The company has started rehearsals on the repertoire with which it will start its road tour in September, opening in Halifax.

In the past Covent Garden opera has been a going organization only during the ten weeks of its London stay, each year necessitating a complete reassembling of staff members.

The National British Opera company, which had to give up its ambitious program of taking opera to English cities outside London because of financial difficulties, will turn over part of its organization to the enlarged Covent Garden company.

POWER

Visit the Dreamland Rink some evening and hear the Power Amplifier equipment which we designed, constructed and installed.

Hear remarkable tone quality coupled with tremendous volume.

We install sound equipment for every purpose, which is guaranteed to do the work required. Estimates gladly furnished on day job.

Dynamic Speaker Units
Electric Phonograph Pickups
Electric Phonograph Motors
Microphones
Microphone Repeaters
Power Amplifiers

Dynamic Speaker Units
Electric Phonograph Pickups
Electric Phonograph Motors
Microphones
Microphone Repeaters
Power Amplifiers

RICHLOU RADIO SERVICE
L. K. Ballinger
R. V. Weatherford
170 N. Front St. Tel. 487
Standard Tubes and Parts

Radio Display Wins Prize



Window Display at Square Deal Hardware. W. Cohen of the Square Deal Hardware won a prize of \$50 from the Atwater Kent manufacturers in a window display contest. Above is the prize-winning window. This is the second prize of the kind Mr. Cohen has won, receiving a \$50 award for the best window in Oregon outside of Portland. The above display was made July 8-13 at the time the Atwater Kent people opened their new factory.

Sings



Miss Billie Dauscha, the crooning radio contralto, who sang in connection with the National Radio Show which opened in New York

HOME MADE SETS GIVEN REAL BOOST

NEW YORK (AP)—Manufacturers are doing their utmost to speed up the task of the fan who still builds at home on the kitchen sink work table.

Introduction of the experimental radio some years ago was by means of a mass of coils, condensers, wires and whatnots. Today he finds that most of the grief is gone from the job that once took days to complete. Hours and even half hours have taken their place.

An example is the introduction of a three-stage hand filter unit, wired and assembled in the factory, for use ahead of the first tube in a screen grid receiver. It consists of a .0005 three-gang condenser in an aluminum shield and three radio frequency coils.

HOME MADE RADIO. each separately shielded. The unit is designed to permit flat top tuning, or to pass a signal 10 kilocycles wide.

A companion unit is a three-stage screen grid RF amplifier, also wired and assembled. It likewise contains a .0005 three-gang shielded coils. In addition in each coil can there is a shielded RF

choke, a new development. The choke is housed in an aluminum shell and is designed so that the external field is absent.

These parts developments, the work of Hammarlund engineers, are intended to make the assembly of a three-stage screen grid so simple that little radio knowledge is required. They remove practically all of the task of putting the RF section of the receiver together, leaving only the wiring to the sockets and the audio and power pack sections.

"No Hunting Signs" on sale at the Statesman office.

On The Air For Sunday and Monday

Sunday, September 29
KGW
483.6 Meters, 620 Kcys.
10 to 11 a. m.—International Bible Students.
11 to 12:30 p. m.—Church service.
1:30 to 2:30 p. m.—Organ recital.
2:30 to 3:30 p. m.—Sunday concert.
3:30 to 4 p. m.—Whittall Anglo-Perman, NBC.
4 to 5 p. m.—Afternoon concert, NBC.
5 to 5:15 p. m.—Dental talk.
5 to 5:15 p. m.—"Book Chat."
5 to 5:15 p. m.—"Atwater Kent Hour," NBC.
6:45 to 7:15 p. m.—Vesper Hour.
7:15 to 7:45 p. m.—Studio-baker program, NBC.
7:45 to 8 p. m.—Enna Jettick Melodies, NBC.
8 to 8:30 p. m.—Baker's Enna Jetticks.
8:30 to 9:30 p. m.—Rollickers.
9:30 to 10 p. m.—"Montag Fireside Hour."
10 to 11 p. m.—Little Symphony orchestra.

KFI
463.5 Meters, 640 Kcys.
10 a. m.—L. A. Church Federation program.
3:30 p. m.—NBC.
4 p. m.—Margaret Kernan, soprano.
4:30 p. m.—Lia Castberg, "Advanced Thought."
6 p. m.—Genevieve Behrend, "Science"
6:15 p. m.—NBC.
6:45 p. m.—Prof. Paul Lamkoff, Cantata, and High Holiday Service Week.
7:15 p. m.—NBC.
7:45 p. m.—NBC.
8 p. m.—Concert orchestra, Fryor Moore, dir.
8 p. m.—Solire Intime—Robert Hurd, tenor; Zsazy Clark, harpist; Herbert Riley, cellist; Margaret Duncan, pianist.
10 p. m.—Wally Perrin's dance orchestra Jean Dunn, soloist.

KPO
449.9 Meters, 650 Kcys.
9 to 9:45 a. m.—Sabbath hour, with Theodore Strong, organist and the Clarion Four.
9:45 to 10:45 a. m.—Interdenominational and nonsectarian church services; Dr. L. L. Loofbourou, superintendent of Oakland district of Methodist Episcopal churches.
10:45 a. m.—Bank of America of California.
11 to 11:30 p. m.—KPO Salon orchestra.
1 to 2:15 p. m.—Afternoon musical by Uta Waldrop with Eva De, soprano.
2:15 to 5 p. m.—Football broadcast.
3 p. m.—Baseball scores.
3 to 4:15 p. m.—Talk by Elmer Robinson.
4 to 5:15 p. m.—Studio program.
5:15 to 7:15 p. m.—NBC.
7:15 to 7:45 p. m.—NBC.
7:45 to 8 p. m.—NBC.
8 to 8:30 p. m.—North American Building Loan association.
8:30 to 9 p. m.—Study Seiger and his

KHQ
508.2 Meters, 590 Kcys.
9:30 to 10 a. m.—Uncle Billy reads the funnies.
10 to 11 a. m.—Children's Bible class.
11 to 12 noon—Central Methodist Episcopal church.
1 to 2:30 p. m.—NBC.
2:30 to 3:30 p. m.—NBC.
3:30 to 4 p. m.—NBC.
4 to 5 p. m.—NBC.
5 to 5:15 p. m.—Triodan String Ensemble.
6:15 to 6:45 p. m.—NBC.
6:45 to 7:15 p. m.—Angelus Hour.
7:15 to 7:45 p. m.—NBC.
7:45 to 8 p. m.—NBC.
8 to 9 p. m.—All Saints' Cathedral.
9 to 9:30 p. m.—Bluman Frank.
9:30 to 10:30 p. m.—City Service Little Symphony.

KGO
379.5 Meters, 790 Kcys.
11 a. m.—First Congregational church service, San Francisco; Rev. Chauncey J. Hawkins, D. D., pastor.
1:30 to 2:30 p. m.—NBC.
2:30 to 3:30 p. m.—NBC.
3:30 to 4 p. m.—NBC.
4 to 5 p. m.—NBC.
5 to 5:45 p. m.—Grace LePage, soprano; Annabelle Jones Rose, contralto, and Carrie Jones Teel, concert pianist.
6:45 to 6:15 p. m.—Hudson Bay Fur Co.
6:15 to 6:45 p. m.—NBC.
6:45 to 7:15 p. m.—Stanislav Bem's Little Symphony, Hotel Whitecomb, San Francisco.
7:15 to 7:45 p. m.—NBC.
7:45 to 8 p. m.—NBC.
8 to 9 p. m.—First Congregational church service, San Francisco; Rev. Chauncey J. Hawkins, D. D., pastor.
9 to 9:30 p. m.—"The Reader's Guide," Joseph Henry Jackson.

Monday, September 30
KGW
483.6 Meters, 620 Kcys.
7:45 to 8 a. m.—Devootional services.

8 to 9 a. m.—Shell Happy Time.
9 to 9:10 a. m.—News.
9:10 to 9:30 a. m.—Oregonian Cooking School.
9:30 to 10:30 a. m.—"The Town Crier."
10:30 to 11:30 a. m.—"Magazine of the Air," NBC.
11:30 to 1 p. m.—Records.
1 to 1:15 p. m.—U. S. market reports.
1:15 to 1:30 p. m.—NBC.
1:30 to 4 p. m.—Edison program, NBC.
4 to 5 p. m.—General Motors Family Party, NBC.
5 to 5:30 p. m.—Davidson Bakers.
5:30 to 6 p. m.—Empire Builders, NBC.
6 to 6:15 p. m.—Seiger's Shell Symphony, NBC.
6 to 6:15 p. m.—Firestone program, NBC.
6:15 to 6:30 p. m.—Bremer-Tully program.
6:30 to 7 p. m.—Ben Selling's Boys and Collettes.
7 to 7:30 p. m.—Organ recital.

KGO
379.5 Meters, 790 Kcys.
9:30 to 10:30 a. m.—California Home Life.
10:30 to 11:30 a. m.—NBC.
11:30 to 1 p. m.—Rembrandt Trio.
1 to 1:30 p. m.—NBC.
1:30 to 2:30 p. m.—Aunt Betty, KGO, Kiddies Klub.
2:30 to 3 p. m.—S. F. and N. Y. stocks, S. F. produce; daily bulletins and flashs.
3 to 3:30 p. m.—NBC.
3:30 to 4 p. m.—NBC.
4 to 5 p. m.—NBC.
5 to 5:30 p. m.—NBC.
5:30 to 6 p. m.—General Electric program.
6 to 6:30 p. m.—NBC.
6:30 to 7 p. m.—NBC.
7 to 7:30 p. m.—NBC.
7:30 to 8 p. m.—NBC.
8 to 9 p. m.—NBC.
9 to 9:30 p. m.—NBC.
9:30 to 10:30 p. m.—General Electric program.
10:30 to 10:45 p. m.—Alaskan news flashs.
10:45 to 11:45 p. m.—Henry Halstead's Hotel St. Francis dance orchestra.

KPO
449.9 Meters, 650 Kcys.
7 to 8 a. m.—S. W. Health Exercises by Hugh Barrett Dobbs, assisted by William H. Hancock.
8 to 9 a. m.—Shell Happy Time, by Hugh Barrett Dobbs and William H. Hancock.
9:30 to 10 a. m.—Dobbs's Daily Chat.
10 to 10:30 a. m.—Helpful hints to housewives.
10:30 to 11:30 a. m.—NBC.
11:30 to 11:45 a. m.—Art talk by Helen Gordon Barker.
11:45 to 12:05 p. m.—Time, Scripture, weather and announcements.
12:05 to 1 p. m.—Acolian Trio.
1 to 1:30 p. m.—Jerry Jermaine.
1:30 to 2 p. m.—Ann Warner's Home Chats.

2 to 2:45 p. m.—The Acolian Trio.
2:45 to 3 p. m.—Stock quotations, radiograms, missing people, etc.
3 to 3:30 p. m.—NBC.
3:30 to 4:45 p. m.—Depart of Commerce talk.
4:45 to 5 p. m.—Calif. Dev. Assn talk.
5 to 6 p. m.—U. S. branch of American Housewives.
6 to 6:30 p. m.—NBC.
6:30 to 7 p. m.—NBC.
7 to 7:30 p. m.—NBC.
7:30 to 8 p. m.—NBC.
8 to 9 p. m.—NBC.
9 to 9:30 p. m.—NBC.
9:30 to 10 p. m.—Brunswick Bells.
10 to 10:30 p. m.—Cambern's Day Dough Boys.
10:30 to 11 p. m.—Forbes Sings.
11 to 11:30 p. m.—Melody House.
11:30 to 12:30 a. m.—Organ recital.

KFI
463.5 Meters, 640 Kcys.
7 a. m.—S. W. morning exercises.
7:45 to 8 a. m.—Shell Happy Time from KPO.
8 a. m.—Sadie Nathan, beauty talks.
9:15 a. m.—Bess Kilmer's Hints to Housewives.
11:30 a. m.—"Mental Exercises," Francis Hancock.
11:30 noon—Agricultural talks.
2 p. m.—Triolian Trio and market reports.
2:30 p. m.—"Phonomena."
3:30 p. m.—Better American Federation.
4 p. m.—Wilfred Butterworth, tenor.
4:45 p. m.—Big Brother.
5:45 p. m.—Stock market reports.
6 p. m.—NBC.
6:30 p. m.—NBC.
7 p. m.—Studio program.
7:30 p. m.—NBC.
8 p. m.—NBC.
9 p. m.—NBC.
9:30 p. m.—Violin recital by Purcell Mayer.
10 p. m.—Packard concert orchestra; Louis Mehan, soloist.
11 p. m.—KFI news bureau.

KHQ
508.2 Meters, 590 Kcys.
7 to 7:30 a. m.—Sunrise Pep Period.
7:30 to 8 a. m.—Model Musical Klock.
8 to 9 a. m.—Shell Happy Time.
9 to 10 a. m.—Home Economics.
10 to 10:30 a. m.—Sunshine Liberty Organ.
10:30 to 11:30 a. m.—NBC.
11:30 to 12 noon—Farmers' Service program.
12 to 12:15 p. m.—Nat'l Savings luncheon program.
12:15 to 12:30 p. m.—Jones' Musical Headlines.
12:30 to 1 p. m.—Voice of Spartan.
1 to 1:30 p. m.—Posty Musical Review.
1:30 to 1:45 p. m.—Modern Shops a Mode.
1:45 to 2 p. m.—Fur Facts.
2 to 3 p. m.—Washington Home Service.
3 to 3:30 p. m.—Theatrical preview.

Tomorrow Night



Great Northern Radio Program

7:30 p.m.

(Pacific Standard Time)

Station KGW

The Great Northern Railway Empire Builders are returning to the air Monday over the NBC national network. Tune in tomorrow night, and every Monday night, at 7:30 p. m.



Atwater-Kent '60'

More than 1000 Sold in Thirty Days Without a Word of Announcement

Echoes of excitement caused by the new Atwater Kent Screen Grid Model 60 are thrilling the radio world. Yet this is the first word you have read about radio's most sensational advance in recent years.

More than 1000 sets sold in San Francisco in less than thirty days—so fast there was never sufficient supply on hand to warrant advertising. Factory production is just beginning to meet this unparalleled demand.

The new Screen Grid 60 proves by performance that it is the greatest radio ever built. Designed for and using three Screen Grid Tubes which do the work of nine old-style tubes—power, tone and selectivity are given a new meaning. A worthy Big Brother to the famous Atwater Kent 55. Hear the new 60 today and then place your order to avoid possible delay.

A "Square Deal" is always given at the
SQUARE DEAL HARDWARE CO.
We service all Radios

220 N. Com'l Tel. 1650

ATWATER KENT SCREEN-GRID RADIO

WE HAVE IT!

The new
PHILCO
BALANCED-UNIT
RADIO!

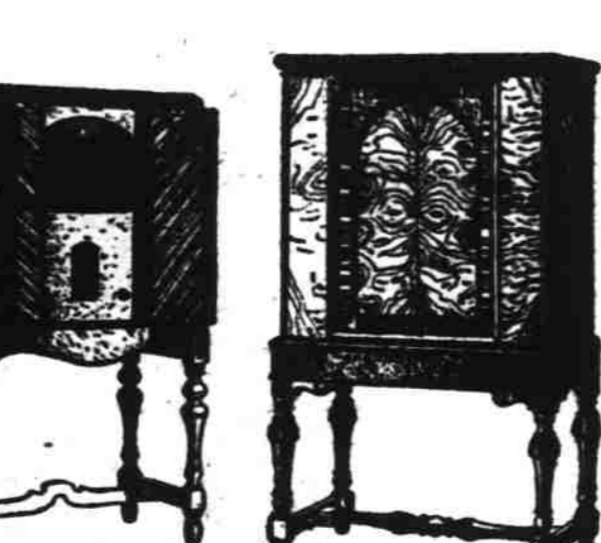
ORIENTAL walnut panels and set-back bird's-eye maple center panel. Genuine, extra large, Electro-Dynamic Speaker, built-in Acoustic Equalizers, and balanced to use TWO of the wonderful new 246 power tubes, push-pull amplification. A radio of extraordinary beauty and highest quality for only \$139.50. Screen Grid model, \$129.50.

Free Home Demonstration!
We will deliver any one of these magnificent new Philco furniture models to your home on Free Demonstration. No obligations—no red tape. We want you to find out for yourself in your own home why Philco performance is the sensation of the radio world.

EASY PAYMENTS, if you decide to buy.
Balanced Units the Secret
RARE PURITY OF TONE — richer, clearer, purer tone than ever before known to radio. Reproduction so lifelike it will amaze and delight you.
MARVELOUS SELECTIVITY — Split-hair selectivity—now sharper than ever.
VAST DISTANCE RANGE—Philco's range sweeps thousands of miles in every direction. Range control cuts out local interference and separates distant stations.

Call or Phone Today
Telephone us or call at our store at once and get the full details. Free Home Demonstration requests will be taken care of in the order in which they come.

This superb
NEUTRODYNE-PLUS LOWBOY
only
\$150.00
Screen Grid Model \$150 Complete



Balanced-Unit Table Model Screen Grid, Electro-Dynamic Speaker — Complete \$180.00
Be sure to hear the new Philco before you buy any Radio

Balanced-Unit Highboy Neutrodyne-Plus \$179.00
Screen Grid . . \$170.00
Balanced-Unit Highboy

DeLuxe Neutrodyne-Plus \$224.50
Screen Grid . . \$225.50

PRICES COMPLETE
K.L. Stiff Furniture Co.
COMPLETE HOUSE FURNISHERS