

# \$200,348 Worth of Automobiles Displayed at the Fair

## DIG INVESTMENT IN AUTO DISPLAY

Total of the Retail Prices of All Automobiles Exhibited Large

The gathering of news and telling about the display offered by automobile dealers at the State fair this year has been a real big task. The listing of each car displayed, giving the price range and trying to bring out the features of each display has proven to be a big job. The figures compiled show that over \$200,000 worth of automobiles have been gathered together in this huge auto pavilion.

## NEW CAR FEATURE IN DODGE DISPLAY

The Bonesteel Motor company, local Dodge dealers, are featuring the Dodge cars, the Plymouth cars and the Dodge trucks at their display at the Oregon state fair. The feature car of their display is the new Dodge six two door sedan which has just been announced. This car while the lowest priced Dodge sedan, is very roomy and attractive. It has mohair upholstery, hydraulic brakes, a seven bearing crankshaft, 112 inch wheel base. The car is equipped with 29x5.50 tires and is a very good road car having a low center of gravity.

The cars on display are Plymouth coupe, sedan, standard sedan, DeLuxe sedan, special sedan, DeLuxe coupe, special roadster, 1/2 ton panel truck, 1 ton 5 cylinder truck, 1 3/4 ton Dodge truck, 3 ton Dodge 185 wheelbase truck, a ton Dodge 185 inch wheelbase truck.

## REO SHOWS TRUCKS AND PLEASURE CARS

Featured in the display of the Reo Sales and Service company is the Reo Flying Cloud Master standard sedan, finished in a rich deep blue, with the finest of dark blue mohair upholstery. This latest model carries all the new mechanical improvements including the new traffic transmission with a silent second speed which has a fifty-five to sixty mile average, and a third speed of seventy-five to eighty. The new chromenickel block used in the model has seven times the wearing qualities of the original close-grained iron block. The retail price of the Master standard sedan is \$2050.

## FRONT WHEEL DRIVE NEW CORD FEATURE

The Portland-Auburn Company, state distributors for the Auburn and the Auburn's new Cord car are displaying their cars at the fair. The feature of this display is the new Cord car with the front wheel drive. This car which is Auburn built is the center of close inspection in the automobile pavilion. The drive is entirely from the front wheels. The advantages and reasons for this drive are well explained by those in charge of the display and pamphlets and literature are furnished.

## LOWER COURT IS UPHOLD ON APPEAL

The state supreme court in an opinion written by Justice Hand, Tuesday upheld the decree of Judge C. H. McCulloch of the Clatsop county circuit court, in a suit brought by A. Antin, administrator of the estate of Charles Elmer Antin, to recover damages from Union high school district No. 2, Clatsop county, and the directors of the district. Judge McCulloch held for the defendants. The complaint set out that Charles Antin was injured fatally when a water tank in the school exploded. It was charged that the water tank was installed improperly and that it could be operated only at high pressure. Antin was 19 years of age and was attend-

## Orthodox Jews Flee Arab Wrath



Actual photograph of Orthodox Jews leaving the older section of Jerusalem to seek refuge in safer quarters after Arabs had destroyed their homes and killed many of their neighbors. This photograph was rushed by plane to Paris and from there to New York by steamer.

ing the school a this time of the explosion. The supreme court held that the installation of the water tank was a governmental act and that if any liability existed, it would fall upon the manufacturer of the tank or the persons who installed it. Other opinions handed down it.

## MANLEY AUTO CO. SHOW THE MARMON

The Manley Auto company of Portland are displaying the Marmon and Roosevelt cars. The cars displayed are all 8 cylinder models and include the Marmon 68, the Roosevelt 8 Cabriolet and the Roosevelt sedan. The price of these cars range from \$1265 to \$1885. The total valuation of this display is \$4,925.

## Irrigation Will Increase Area Of Citrus Land

HARLINGEN, Tex. (AP)—More than half a million acres in the citrus-growing "magic valley" of Texas will be irrigated with the completion of a 129,000-acre project now under way. The new ditch, running with the country's largest irrigation projects, will be 40 miles long, 90 feet wide and 14 feet deep. It will cost \$6,000,000. The furrow system of irrigation rather than the flood method will be employed.

Cooperative marketing among citrus fruit farmers of the lower Rio Grande valley will be attempted in the new district, which will be irrigated with flood waters from the Rio Grande.

## Honey and Bee Exhibit is Largest Ever Staged Here

Results of the honey and bee exhibit, one of the largest ever shown at the State Fair, were announced Tuesday night. Awards were made both on comb and extracted honey, on beeswax, honey vinegar, and on pastries and fruit canned with honey.

Awards were made as follows, contestants being listed in the various events in the order in which they placed. **BEEHIVE AND HONEY** Specimen comb honey, not less than 24 pounds alfalfa and sweet clover honey: John Goodman, Ontario, Oregon, Mrs. E. T. Glaser, Jefferson. Comb honey not less than 24 pounds fire weed honey: F. E. Smith, Dallas, W. L. Arant, Forest Grove, W. H. Pennington, Portland. Comb honey not less than 24 pounds not otherwise classified: Mrs. W. H. Pennington, Portland, Mrs. E. T. Glaser, Jefferson.

Extracted honey not less than 24 pounds fire weed: W. B. Thomas, Portland, W. L. Arant, Forest Grove, W. H. Pennington, Portland, S. D. Williams, Portland. Extracted honey, not less than 24 pounds clover honey: Mrs. F. T. Glaser, Jefferson, L. J. Dame, Portland. Extracted honey not less than 24 pounds not otherwise classified: Mrs. F. T. Glaser, Jefferson, W. L. Arant, Forest Grove, S. D. Williams, Portland, W. H. Pennington, Portland. Beeswax, not less than 10 pounds soft bright yellow wax to be given preference: Mrs. F. T. Glaser, Jefferson, W. H. Pennington, Portland, Hans Rehb, Salem, W. B. Thomas, Portland. Honey vinegar, not less than 1 gallon, shown in glass: W. H. Pennington, Portland, Mrs. M. R. Black, Independence. Single comb au-

trios 3-banded Italian bees: Hans Rehb, Salem, W. H. Pennington, Portland, L. J. Dame, Portland. Single comb nucleus Golden Italian bees: L. J. Dame, Portland. **PASTRY AND FRUIT CANNED WITH HONEY** Fruit canned in honey, not less than 6 quarts assorted: L. J. Dame, Portland, Mabel Oliver, Rickreall, Fruit 3 kinds, fruit, layer, loaf: Mabel Oliver, Rickreall, Mrs. F. T. Glaser, Jefferson. Cookies, rolled or dropped: Mrs. F. T. Glaser, Jefferson, Mrs. Percy Tallman, Salem, Jellies—3 classes, 3 kinds or more: Mrs. F. T. Glaser, Jefferson, W. H. Pennington, Portland, James and preserves—5 glasses, 3 kinds or more: Mabel Oliver, Rickreall, Mrs. F. T. Glaser, Jefferson. Sweet pickles: Mrs. Roy V. Smart, Salem, Mabel Oliver, Rickreall, Pies, single crust: Mabel Oliver, Rickreall, Mrs. F. T. Glaser, Jefferson. Pies, double crust: Mabel Oliver, Rickreall, Candy, three kinds: Mrs. F. T. Glaser, Jefferson, Mabel Oliver, Rickreall. Bread—dark, whole wheat, or light: Mrs. Dinche Dams, Portland, Mrs. F. T. Glaser, Jefferson. Salad dressing, not less than two kinds: Mabel Oliver, Rickreall, Mrs. F. T. Glaser, Jefferson, Mabel Oliver, Rickreall. Best general exhibit: Mrs. F. T. Glaser, Mabel Oliver. Largest and most attractive display of apian products exhibited by one individual beekeeper: Mrs. F. T. Glaser, W. H. Pennington.

**TRIO'S OWNER GENEROUS HELPFUL.** (AP)—William Barcott, owner of Trio, the Derby victor, has given \$15,000 to the Belfast hospital to signalize his horse's victory.

## CATERPILLAR SHOWS DURING STATE FAIR

A "Cat" Ten that "turns on a dime" is only one of the interesting machines in the display section of the Loggers and Contractors Machinery company at the fair grounds. The "cat" is the common term for the Caterpillar tractor. The power machine which builds roads, pulls plows and harvesters, hauls logs and does labor of all kind in lieu of horse power. Besides the "Ten" (which refers to its horsepower) there are the 15, 20, 30 and 50. Each size will take care of the work on different sized acres from 100 to 700 acres. The big tractors are used chiefly in logging operations. The ten turns on a metal plate only one foot wider and longer than the length of the tractor. The machine is demonstrated thus to show how it can cover corners of fields, squeeze out of tight places and go nearly every place that a horse could go.

## ANDERSON SHOWS DE SOTO LINE

W. L. Anderson, Inc., is displaying the De Soto cars at the fair this year. The models on display are the DeSoto standard sedan, the DeLuxe Sedan and the DeLuxe Coupe.

## LARGE DISPLAY OF CHRYSLERS AT FAIR

The Fitzgerald Sherwin Motor company are again displaying a complete line of Chrysler automobiles at the Oregon State fair

and are also showing the Plymouth cars which are Chrysler built. The display consists of the Chrysler Imperial roadster, 77 royal sedan, 77 royal coupe, 70 brougham, 70 roadster, 70 royal sedan, 66 royal coupe, 66 royal sedan, the Plymouth sport roadster, business coupe, DeLuxe sedan, and royal sedan.

The feature car of the Chrysler display and one that is attracting considerable attention is the Imperial roadster. The car which has a 100 horse power motor, has an all custom built body, chromium plated and the finest leather upholstery. It has an auxiliary wind shield for the rumble seat and is equipped with most all the auxiliaries imaginable. The car is grey with red leather upholstery and a dark stripe.

## Elevators are Farm Owned in Northwest Area

BISMARCK, N. D.—(AP)—Farmer owned patronage and cooperative elevators are doing a big business in North Dakota as shown by statistics compiled by the state railroad and warehouse commission.

## Dry Plowing and Subsoiling with "CATERPILLAR" TRACTOR

NOW IS THE TIME TO SUBSOIL. PUTTING THE SOIL IN PHYSICAL CONDITION FOR STORAGE OF A PLENTIFUL SUPPLY OF MOISTURE AT A SAFE DEPTH. SUBSOILING AIRS THE SOIL, ADMITTING OXYGEN, THUS INCREASING CHEMICAL PROCESS, AND THEREBY BENEFITING ACID SOIL WHICH IS VITAL FOR SUCCESSFUL CROPS.



THE MOST STUBBORN GROUND MUST YIELD TO THE "CATERPILLAR"

POWER—AND SURE FOOTED TRACTION WITHOUT SLIPPAGE over ROUGH GROUND — SAND — SIDE HILLS

Wet or Dry Means Nothing to a "Caterpillar"

YOU ARE CORDIALLY INVITED

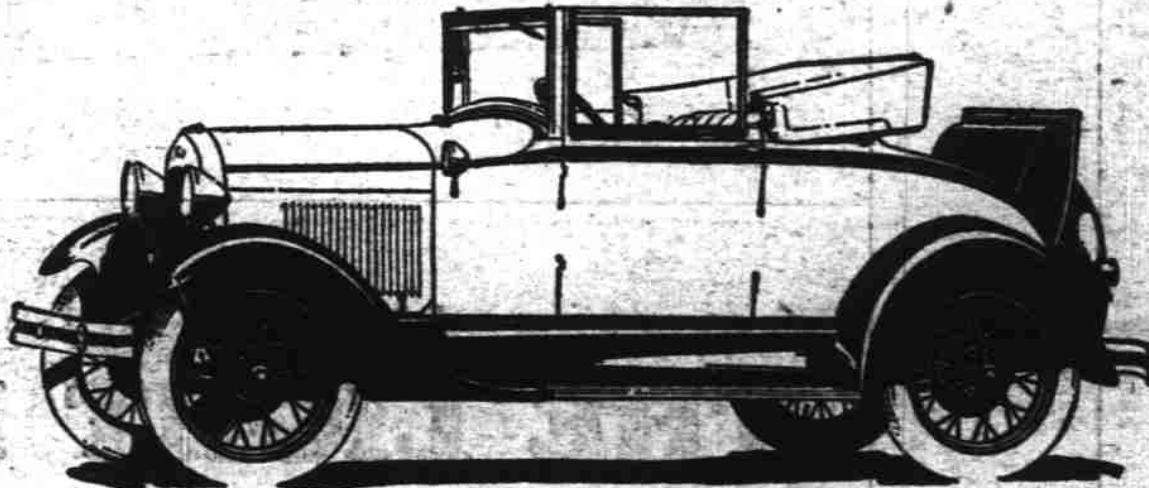
To visit our booth at the Oregon State Fair, Salem, September 22 to 28. A complete line of "CATERPILLAR" TRACTORS, a HOLT COMBINE and other modern farm machinery will be on display for your inspection.

## Loggers & Contractors Machinery Company

PORTLAND

SALEM

Modern farm tools and effective use pay big dividends



THE CONVERTIBLE CABRIOLET—one of the newest Ford cars. Now on display, WITH ELEVEN OTHER FORD PASSENGER BODY TYPES. First time the complete line has ever been shown in this city.

See all the Ford Cars this week at the

## The Oregon State Fair

NOTE the new colors—the new body types—the new upholstery—the quiet, substantial quality so evident in every least little detail of finish and appointment.

Then do the one thing that will tell you more about the value and performance of the Ford car than we could write in ten pages... take it out on the road and drive it yourself.

Guide it through traffic and note its acceleration, its ease

of control and the safety of its brakes. Test its speed on the open road. Drive out to your favorite hill and see how easily it climbs in high. Note how comfortably it rides. Ask Ford owners about its economy and reliability and about Ford SERVICE.

Then you will know why the Ford is such a satisfactory, economical car to own and drive. Then you will know why it brings you "value far above the price."

## VALLEY MOTOR CO.

Corner Center and Liberty Salem Ford Dealers

Tel. 1995

## The Fitzgerald-Sherwin Motor Co.

Invite You to Visit Their Display of

# Chrysler and Plymouth Automobiles

at the Oregon State Fair



You will find a most complete showing of all models.

THE NEW '27 CROWN SEDAN, \$1775 (Special Equipment Extra)