

Society News and Club Affairs

OLIVE M. DOAK, Society Editor

Chapter G P. E. O. Plan Bazaar In October

Mrs. W. M. Hughes has been elected to members of Chapter G of the P. E. O. sisterhood at her home Thursday afternoon. Mrs. Harold Hughes and Mrs. F. W. Lange assisted her in receiving and serving at the tea hour following the business and program meeting.

In the business meeting plans were made for the bazaar and the rummage sale which is decided should take place October 11. The committee in charge of the rummage sale is Mrs. W. M. Smith and Mrs. W. M. Hughes. Mrs. C. K. Logan, Mrs. E. J. Huffman, and Mrs. J. G. Knapp are the committee in charge of the bazaar arrangements.

Miss Rovena Eyre Entertains for Miss Zieber

Miss Rovena Eyre entertained with an informal dinner at the Marion hotel Thursday evening complimenting Miss Charlotte Zieber who will leave for the east en route to Europe today. The dinner table where covers for eight were laid, was beautifully centered with late fall flowers in the rich bronze shades of autumn.

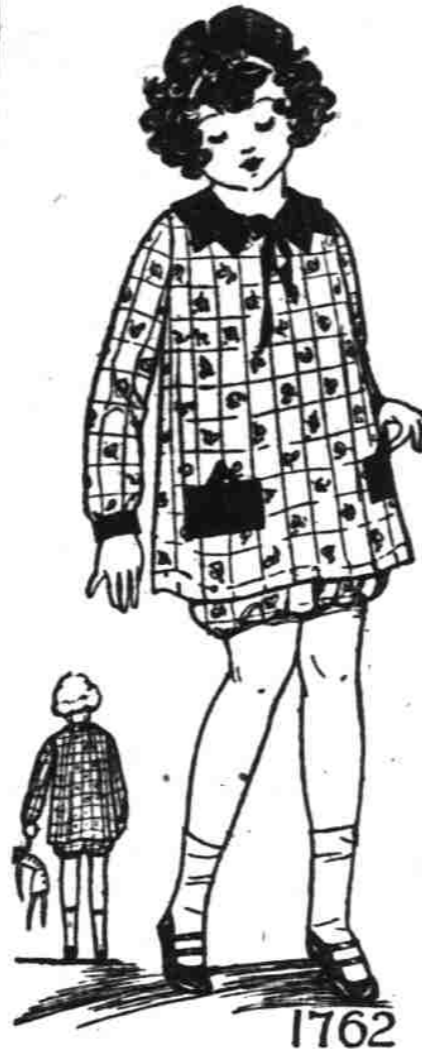
Young Musicians Play for D. A. R.

A group of young violinists who form the violin choir directed by Miss Elizabeth Levy assisted with the program which was presented in commemoration of Constitution Day by Chemeketa chapter of Daughters of the American Revolution, Tuesday in the senate chamber of the state house.

Gingham Frock for Tot

PATTERN 1762
The Oregon Statesman
Practical Pattern

This smart looking little model is very simple, and easy to make. The cleverly shaped collar and pockets create an effective trimming. Design 1762 has long set-in sleeves which are mighty comfy in cool weather.



Suitable fabrics for the frock and bloomers are ginghams, percales, linens, dimities and pongees. The collar, cuffs and pockets may be made of pique or linen in solid color, harmonizing with the color scheme of the print.

Society Dons its Formal In Gay Compliment To the Horse

Since mind "runneth not to the contrary," horse has been the best friend man and science can bring with the automobile, then man not being able to part with that which had become so much a part of his daily life, made horse his best playmate so that today we find where ever folk are playing there are horses to add zest and style to the tone of the playground.

Beginning Tuesday night, folk of Salem, Oregon, in general, and many from distant points of the west and east will gather in both formal and informal manner to do homage to this playmate—the horse, in performance at the Oregon state fair horse show for five nights.

Mrs. Roy Keene is Luncheon Hostess

Among the first of the early fall season affairs were the two delightful one o'clock luncheons for which Mrs. Roy Keene was hostess Wednesday and Thursday at her home on Lefele street.

In keeping with the fall decree for color were the small tables at which the guests were seated, each being centered with quaint corsage bouquets in pastel shades on cloths of organdy, each in a different soft color.

Younger Set Enjoy Evening Dancing Party

Miss Margaret Drager was hostess for a dancing party at her home on North Capitol street Wednesday night. A profusion of fall flowers in the deep shades of autumn made a beautiful background for the dancing which was enjoyed until late hour.

Guests for this occasion were Miss Ruth Dick, Miss Dorothy Moore, Miss Dorothy White, Miss Virginia Holt, Miss Virginia Sisson, Miss Wallace Smith, Miss Maxine Myers, Miss Wilda Fisher, Miss Ruby Drager, Miss Myra Belt, Miss Ruthia Hoffnol, Miss Katharine Laughrize, Miss Julia Crech, Miss Carolyn Braden, Miss Margaret Wagner, Miss Phyllis Dale, Miss M. E. S. Simon, Miss Helen Olson, Miss Margaret Will, Miss Gertrude Thornton, Miss Kathryn Corey, Miss Esther Wood, Leon Perry, Ronald Repine, Perry Andrews, Chandler Brown, George Lloyd, David Eyre, Harold Tolson, John Creighton Jones, Kimball Page, Kenneth Klein, Norman Winslow, Edward Raffety, Herbert Hobson, Lee Cox, Gordon Bennett, Reynolds Allen, Robert Needham, George Beecher, and Jim Emmett.

SOCIAL CALENDAR

- Friday:
 - Women's Missionary society, Calvary Baptist church, 7:30 p. m.
 - H. Pickens, 695 N. 17th street.
 - Woman's Auxiliary, St. Paul's church, 2:30 p. m.
 - Mrs. A. C. F. Perry, 166 Washington street.
 - Ever Ready Birthday club, Mrs. Bertha Loveland, 405 South 26th street.
 - Hal Hubbard auxiliary, U. S. V. E., entertain at the home of Mrs. Henry O. Miller, 405 Kearney, business and social meeting.
 - Leslie Can Do class with Mrs. John Bertelson, 110 Lefele street.
 - Past Matrons' club, with Ida Godfrey, regular meeting.
 - Social literary meeting, Unitarian Alliance, luncheon 1 o'clock, program following.
 - Emerson room of church.
- Saturday:
 - Chadwick chapter, of the Order of the Rainbow, installation ceremony at Masonic Temple.
 - Woman's Relief Corps, Miller's hall, 2 o'clock.
 - Knights and Lady Macca, 8 o'clock initiation.
- Sunday:
 - Rally, Luther League of American Lutheran church at church, 4:30 o'clock and 7:30 o'clock.

Current Radio Programs From Portland

FRIDAY, SEPTEMBER 20
KOIN
Koin (425 m., 840 kc.)

- 9:30—Organ recital.
- 9:30 to 9:59—Cooking school by Ruth Adamson of the Home Economics Department of the Portland News.
- 9:59 to 11:15—Shoppers' Guide and Town Topics program, conducted by Velva Weller, director of KOIN Women's department.
- 11:15 to 12—Vocal program.
- 12:15 to 1:30—Billy's Hawaiians.
- 1:30 to 2—Orchestra and string ensemble.
- 2 to 2:15—International speaker.
- 2:15 to 2:30—Devotional services.
- 2:30 to 2:45—Portland News matinee, news items and music.
- 2:45 to 3—String ensemble.
- 3 to 3:15—Orchestra.
- 3:15 to 4—Dinner concert on the Heathman hotel pipe organ.
- 4 to 7:30—The Benson hotel orchestra, playing from the main dining room of the Benson hotel.
- 7:30 to 8—Orchestra.
- 8 to 9—Studio string ensemble.
- 9 to 10:15—McElroy's Oregonians, from Cole McElroy's Spanish ballroom.

KGW
422.5 Meters, 629 Kcys.

- 7:45 to 8 a. m.—Devotional services.
- 8 to 9 a. m.—Shell Happy Time, NBC.
- 9 to 9:30 a. m.—News.
- 9:30 to 10 a. m.—Oregonian Cooking school.
- 10 to 10:15 a. m.—The Town Crier.
- 10:15 to 11 a. m.—Du Barry program, NBC.
- 11 to 12:30 a. m.—Libby, McNeill and NBC.
- 12:30 to 1:30 a. m.—"Women's Magazine of the Air," NBC.
- 1:30 to 1:45 a. m.—U. S. market report.
- 1:45 to 2 p. m.—Organ recital.
- 2 to 3 p. m.—Interwoven Pair, NBC.
- 3 to 4 p. m.—Musical bulletin.
- 4 to 5 p. m.—Armour program, NBC.
- 5 to 6 p. m.—Green Room, NBC.
- 6 to 9 p. m.—"RCA Hour," NBC.
- 9 to 9:30 p. m.—Studio.
- 9:30 to 10 p. m.—Veedol Vaudeville from KOMO.
- 10 to 10:30 p. m.—The Two Troopers, NBC.
- 10:30 to 12 midnight—Hoot Owl.

KGO
379.5 Meters, 790 Kcys.

- 9 to 10 a. m.—California Home Life talk, NBC.
- 10 to 10:15 a. m.—Du Barry program, NBC.
- 10:15 to 11:30 a. m.—Magazine of the Air, NBC.
- 11:30 to 12 noon—Studio staff program, NBC.
- 12 to 1:15 p. m.—Pacific Little Symphony, NBC.
- 1:15 to 1:30 p. m.—Weather, S. F. and daily bulletin.
- 1:30 to 2 p. m.—"The News in Washington," NBC.
- 2 to 4 p. m.—Edward J. Fitzpatrick Hotel St. Francis orchestra.
- 4 to 5 p. m.—Tom King detective stories.
- 5 to 5:30 p. m.—Interwoven Pair, NBC.
- 5:30 to 6 p. m.—S. F. and N. Y. stocks.
- 6 to 6:30 p. m.—Daily bulletin and news.
- 6:30 to 7 p. m.—"Stars of Melody," NBC.
- 7 to 8 p. m.—"Armour program," NBC.
- 8 to 8:30 p. m.—Stanislav Bem's Little Symphony orchestra, Hotel Whitcomb, San Francisco.
- 8:30 to 9 p. m.—"RCA Hour," NBC.
- 9 to 9:30 p. m.—"Borden's Dairy," NBC.
- 9:30 to 10 p. m.—The Three Boys.
- 10 to 11 p. m.—Western Artist Series concert, The Olympia.
- 11 to 12 midnight—Henry Halstead's Hotel St. Francis dance orchestra.

KPO
440.9 Meters, 680 Kcys.

- 7 to 8 a. m.—S. F. and W. health exercises by Hugh Barrett, Dobbs and William H. Hancock.
- 8 to 9 a. m.—Shell Happy Time by Hugh Barrett, Dobbs and William H. Hancock.
- 9:30 to 10 a. m.—Dobbie's Daily Chat.
- 10 to 10:15 a. m.—Du Barry program, NBC.
- 10:15 to 10:30 a. m.—Libby, McNeill, Libby, NBC.
- 10:30 to 11:30 a. m.—Magazine of the Air, NBC.
- 11:30 to 12:05 p. m.—Scripture reading announcements.
- 12:05 to 12:45 p. m.—Saul Sieff and Wilbur Stump, piano duo.
- 12:45 to 1:30 p. m.—Commonwealth Club luncheon.
- 1:30 to 2 p. m.—House of Dreams.
- 2 to 2:15 p. m.—Stock market quotations.
- 2:15 to 2:45 p. m.—Kozak Radiogram.
- 2:45 to 4:30 p. m.—Baseball broadcast, CBS.
- 4:30 to 4:40 p. m.—Stock market quotations.
- 4:40 to 5 p. m.—Children's hour.
- 5 to 5:30 p. m.—Interwoven Pair, NBC.
- 5:30 to 8:45 p. m.—Federal Business

KHQ
592.5 Meters, 590 Kcys.

- 7 to 7:30 a. m.—Sunrise Pep period.
- 7:30 to 8 a. m.—Model Musical Kiosk.
- 8 to 9 a. m.—Shell Happy Time, KPO.
- 9 to 9:30 a. m.—Home Economics.
- 9:30 to 10 a. m.—Sunshine Liberty organ.
- 10 to 10:15 a. m.—Du Barry program, NBC.
- 10:15 to 10:30 a. m.—Libby, McNeill and NBC.

KGI
425 Meters, 840 Kcys.

- 9:30 to 9:59—Cooking school by Ruth Adamson of the Home Economics Department of the Portland News.
- 9:59 to 11:15—Shoppers' Guide and Town Topics program, conducted by Velva Weller, director of KOIN Women's department.
- 11:15 to 12—Vocal program.
- 12:15 to 1:30—Billy's Hawaiians.
- 1:30 to 2—Orchestra and string ensemble.
- 2 to 2:15—International speaker.
- 2:15 to 2:30—Devotional services.
- 2:30 to 2:45—Portland News matinee, news items and music.
- 2:45 to 3—String ensemble.
- 3 to 3:15—Orchestra.
- 3:15 to 4—Dinner concert on the Heathman hotel pipe organ.
- 4 to 7:30—The Benson hotel orchestra, playing from the main dining room of the Benson hotel.
- 7:30 to 8—Orchestra.
- 8 to 9—Studio string ensemble.
- 9 to 10:15—McElroy's Oregonians, from Cole McElroy's Spanish ballroom.

KGO
379.5 Meters, 790 Kcys.

- 9 to 10 a. m.—California Home Life talk, NBC.
- 10 to 10:15 a. m.—Du Barry program, NBC.
- 10:15 to 11:30 a. m.—Magazine of the Air, NBC.
- 11:30 to 12 noon—Studio staff program, NBC.
- 12 to 1:15 p. m.—Pacific Little Symphony, NBC.
- 1:15 to 1:30 p. m.—Weather, S. F. and daily bulletin.
- 1:30 to 2 p. m.—"The News in Washington," NBC.
- 2 to 4 p. m.—Edward J. Fitzpatrick Hotel St. Francis orchestra.
- 4 to 5 p. m.—Tom King detective stories.
- 5 to 5:30 p. m.—Interwoven Pair, NBC.
- 5:30 to 6 p. m.—S. F. and N. Y. stocks.
- 6 to 6:30 p. m.—Daily bulletin and news.
- 6:30 to 7 p. m.—"Stars of Melody," NBC.
- 7 to 8 p. m.—"Armour program," NBC.
- 8 to 8:30 p. m.—Stanislav Bem's Little Symphony orchestra, Hotel Whitcomb, San Francisco.
- 8:30 to 9 p. m.—"RCA Hour," NBC.
- 9 to 9:30 p. m.—"Borden's Dairy," NBC.
- 9:30 to 10 p. m.—The Three Boys.
- 10 to 11 p. m.—Western Artist Series concert, The Olympia.
- 11 to 12 midnight—Henry Halstead's Hotel St. Francis dance orchestra.

KPO
440.9 Meters, 680 Kcys.

- 7 to 8 a. m.—S. F. and W. health exercises by Hugh Barrett, Dobbs and William H. Hancock.
- 8 to 9 a. m.—Shell Happy Time by Hugh Barrett, Dobbs and William H. Hancock.
- 9:30 to 10 a. m.—Dobbie's Daily Chat.
- 10 to 10:15 a. m.—Du Barry program, NBC.
- 10:15 to 10:30 a. m.—Libby, McNeill, Libby, NBC.
- 10:30 to 11:30 a. m.—Magazine of the Air, NBC.
- 11:30 to 12:05 p. m.—Scripture reading announcements.
- 12:05 to 12:45 p. m.—Saul Sieff and Wilbur Stump, piano duo.
- 12:45 to 1:30 p. m.—Commonwealth Club luncheon.
- 1:30 to 2 p. m.—House of Dreams.
- 2 to 2:15 p. m.—Stock market quotations.
- 2:15 to 2:45 p. m.—Kozak Radiogram.
- 2:45 to 4:30 p. m.—Baseball broadcast, CBS.
- 4:30 to 4:40 p. m.—Stock market quotations.
- 4:40 to 5 p. m.—Children's hour.
- 5 to 5:30 p. m.—Interwoven Pair, NBC.
- 5:30 to 8:45 p. m.—Federal Business

KHQ
592.5 Meters, 590 Kcys.

- 7 to 7:30 a. m.—Sunrise Pep period.
- 7:30 to 8 a. m.—Model Musical Kiosk.
- 8 to 9 a. m.—Shell Happy Time, KPO.
- 9 to 9:30 a. m.—Home Economics.
- 9:30 to 10 a. m.—Sunshine Liberty organ.
- 10 to 10:15 a. m.—Du Barry program, NBC.
- 10:15 to 10:30 a. m.—Libby, McNeill and NBC.

KGI
425 Meters, 840 Kcys.

- 9:30 to 9:59—Cooking school by Ruth Adamson of the Home Economics Department of the Portland News.
- 9:59 to 11:15—Shoppers' Guide and Town Topics program, conducted by Velva Weller, director of KOIN Women's department.
- 11:15 to 12—Vocal program.
- 12:15 to 1:30—Billy's Hawaiians.
- 1:30 to 2—Orchestra and string ensemble.
- 2 to 2:15—International speaker.
- 2:15 to 2:30—Devotional services.
- 2:30 to 2:45—Portland News matinee, news items and music.
- 2:45 to 3—String ensemble.
- 3 to 3:15—Orchestra.
- 3:15 to 4—Dinner concert on the Heathman hotel pipe organ.
- 4 to 7:30—The Benson hotel orchestra, playing from the main dining room of the Benson hotel.
- 7:30 to 8—Orchestra.
- 8 to 9—Studio string ensemble.
- 9 to 10:15—McElroy's Oregonians, from Cole McElroy's Spanish ballroom.

KGO
379.5 Meters, 790 Kcys.

- 9 to 10 a. m.—California Home Life talk, NBC.
- 10 to 10:15 a. m.—Du Barry program, NBC.
- 10:15 to 11:30 a. m.—Magazine of the Air, NBC.
- 11:30 to 12 noon—Studio staff program, NBC.
- 12 to 1:15 p. m.—Pacific Little Symphony, NBC.
- 1:15 to 1:30 p. m.—Weather, S. F. and daily bulletin.
- 1:30 to 2 p. m.—"The News in Washington," NBC.
- 2 to 4 p. m.—Edward J. Fitzpatrick Hotel St. Francis orchestra.
- 4 to 5 p. m.—Tom King detective stories.
- 5 to 5:30 p. m.—Interwoven Pair, NBC.
- 5:30 to 6 p. m.—S. F. and N. Y. stocks.
- 6 to 6:30 p. m.—Daily bulletin and news.
- 6:30 to 7 p. m.—"Stars of Melody," NBC.
- 7 to 8 p. m.—"Armour program," NBC.
- 8 to 8:30 p. m.—Stanislav Bem's Little Symphony orchestra, Hotel Whitcomb, San Francisco.
- 8:30 to 9 p. m.—"RCA Hour," NBC.
- 9 to 9:30 p. m.—"Borden's Dairy," NBC.
- 9:30 to 10 p. m.—The Three Boys.
- 10 to 11 p. m.—Western Artist Series concert, The Olympia.
- 11 to 12 midnight—Henry Halstead's Hotel St. Francis dance orchestra.

KPO
440.9 Meters, 680 Kcys.

- 7 to 8 a. m.—S. F. and W. health exercises by Hugh Barrett, Dobbs and William H. Hancock.
- 8 to 9 a. m.—Shell Happy Time by Hugh Barrett, Dobbs and William H. Hancock.
- 9:30 to 10 a. m.—Dobbie's Daily Chat.
- 10 to 10:15 a. m.—Du Barry program, NBC.
- 10:15 to 10:30 a. m.—Libby, McNeill, Libby, NBC.
- 10:30 to 11:30 a. m.—Magazine of the Air, NBC.
- 11:30 to 12:05 p. m.—Scripture reading announcements.
- 12:05 to 12:45 p. m.—Saul Sieff and Wilbur Stump, piano duo.
- 12:45 to 1:30 p. m.—Commonwealth Club luncheon.
- 1:30 to 2 p. m.—House of Dreams.
- 2 to 2:15 p. m.—Stock market quotations.
- 2:15 to 2:45 p. m.—Kozak Radiogram.
- 2:45 to 4:30 p. m.—Baseball broadcast, CBS.
- 4:30 to 4:40 p. m.—Stock market quotations.
- 4:40 to 5 p. m.—Children's hour.
- 5 to 5:30 p. m.—Interwoven Pair, NBC.
- 5:30 to 8:45 p. m.—Federal Business

KHQ
592.5 Meters, 590 Kcys.

- 7 to 7:30 a. m.—Sunrise Pep period.
- 7:30 to 8 a. m.—Model Musical Kiosk.
- 8 to 9 a. m.—Shell Happy Time, KPO.
- 9 to 9:30 a. m.—Home Economics.
- 9:30 to 10 a. m.—Sunshine Liberty organ.
- 10 to 10:15 a. m.—Du Barry program, NBC.
- 10:15 to 10:30 a. m.—Libby, McNeill and NBC.

KGI
425 Meters, 840 Kcys.

- 9:30 to 9:59—Cooking school by Ruth Adamson of the Home Economics Department of the Portland News.
- 9:59 to 11:15—Shoppers' Guide and Town Topics program, conducted by Velva Weller, director of KOIN Women's department.
- 11:15 to 12—Vocal program.
- 12:15 to 1:30—Billy's Hawaiians.
- 1:30 to 2—Orchestra and string ensemble.
- 2 to 2:15—International speaker.
- 2:15 to 2:30—Devotional services.
- 2:30 to 2:45—Portland News matinee, news items and music.
- 2:45 to 3—String ensemble.
- 3 to 3:15—Orchestra.
- 3:15 to 4—Dinner concert on the Heathman hotel pipe organ.
- 4 to 7:30—The Benson hotel orchestra, playing from the main dining room of the Benson hotel.
- 7:30 to 8—Orchestra.
- 8 to 9—Studio string ensemble.
- 9 to 10:15—McElroy's Oregonians, from Cole McElroy's Spanish ballroom.

KGO
379.5 Meters, 790 Kcys.

- 9 to 10 a. m.—California Home Life talk, NBC.
- 10 to 10:15 a. m.—Du Barry program, NBC.
- 10:15 to 11:30 a. m.—Magazine of the Air, NBC.
- 11:30 to 12 noon—Studio staff program, NBC.
- 12 to 1:15 p. m.—Pacific Little Symphony, NBC.
- 1:15 to 1:30 p. m.—Weather, S. F. and daily bulletin.
- 1:30 to 2 p. m.—"The News in Washington," NBC.
- 2 to 4 p. m.—Edward J. Fitzpatrick Hotel St. Francis orchestra.
- 4 to 5 p. m.—Tom King detective stories.
- 5 to 5:30 p. m.—Interwoven Pair, NBC.
- 5:30 to 6 p. m.—S. F. and N. Y. stocks.
- 6 to 6:30 p. m.—Daily bulletin and news.
- 6:30 to 7 p. m.—"Stars of Melody," NBC.
- 7 to 8 p. m.—"Armour program," NBC.
- 8 to 8:30 p. m.—Stanislav Bem's Little Symphony orchestra, Hotel Whitcomb, San Francisco.
- 8:30 to 9 p. m.—"RCA Hour," NBC.
- 9 to 9:30 p. m.—"Borden's Dairy," NBC.
- 9:30 to 10 p. m.—The Three Boys.
- 10 to 11 p. m.—Western Artist Series concert, The Olympia.
- 11 to 12 midnight—Henry Halstead's Hotel St. Francis dance orchestra.

KPO
440.9 Meters, 680 Kcys.

- 7 to 8 a. m.—S. F. and W. health exercises by Hugh Barrett, Dobbs and William H. Hancock.
- 8 to 9 a. m.—Shell Happy Time by Hugh Barrett, Dobbs and William H. Hancock.
- 9:30 to 10 a. m.—Dobbie's Daily Chat.
- 10 to 10:15 a. m.—Du Barry program, NBC.
- 10:15 to 10:30 a. m.—Libby, McNeill, Libby, NBC.
- 10:30 to 11:30 a. m.—Magazine of the Air, NBC.
- 11:30 to 12:05 p. m.—Scripture reading announcements.
- 12:05 to 12:45 p. m.—Saul Sieff and Wilbur Stump, piano duo.
- 12:45 to 1:30 p. m.—Commonwealth Club luncheon.
- 1:30 to 2 p. m.—House of Dreams.
- 2 to 2:15 p. m.—Stock market quotations.
- 2:15 to 2:45 p. m.—Kozak Radiogram.
- 2:45 to 4:30 p. m.—Baseball broadcast, CBS.
- 4:30 to 4:40 p. m.—Stock market quotations.
- 4:40 to 5 p. m.—Children's hour.
- 5 to 5:30 p. m.—Interwoven Pair, NBC.
- 5:30 to 8:45 p. m.—Federal Business

KHQ
592.5 Meters, 590 Kcys.

- 7 to 7:30 a. m.—Sunrise Pep period.
- 7:30 to 8 a. m.—Model Musical Kiosk.
- 8 to 9 a. m.—Shell Happy Time, KPO.
- 9 to 9:30 a. m.—Home Economics.
- 9:30 to 10 a. m.—Sunshine Liberty organ.
- 10 to 10:15 a. m.—Du Barry program, NBC.
- 10:15 to 10:30 a. m.—Libby, McNeill and NBC.

KGI
425 Meters, 840 Kcys.

- 9:30 to 9:59—Cooking school by Ruth Adamson of the Home Economics Department of the Portland News.
- 9:59 to 11:15—Shoppers' Guide and Town Topics program, conducted by Velva Weller, director of KOIN Women's department.
- 11:15 to 12—Vocal program.
- 12:15 to 1:30—Billy's Hawaiians.
- 1:30 to 2—Orchestra and string ensemble.
- 2 to 2:15—International speaker.
- 2:15 to 2:30—Devotional services.
- 2:30 to 2:45—Portland News matinee, news items and music.
- 2:45 to 3—String ensemble.
- 3 to 3:15—Orchestra.
- 3:15 to 4—Dinner concert on the Heathman hotel pipe organ.
- 4 to 7:30—The Benson hotel orchestra, playing from the main dining room of the Benson hotel.
- 7:30 to 8—Orchestra.
- 8 to 9—Studio string ensemble.
- 9 to 10:15—McElroy's Oregonians, from Cole McElroy's Spanish ballroom.

KGO
379.5 Meters, 790 Kcys.

- 9 to 10 a. m.—California Home Life talk, NBC.
- 10 to 10:15 a. m.—Du Barry program, NBC.
- 10:15 to 11:30 a. m.—Magazine of the Air, NBC.
- 11:30 to 12 noon—Studio staff program, NBC.
- 12 to 1:15 p. m.—Pacific Little Symphony, NBC.
- 1:15 to 1:30 p. m.—Weather, S. F. and daily bulletin.
- 1:30 to 2 p. m.—"The News in Washington," NBC.
- 2 to 4 p. m.—Edward J. Fitzpatrick Hotel St. Francis orchestra.
- 4 to 5 p. m.—Tom King detective stories.
- 5 to 5:30 p. m.—Interwoven Pair, NBC.
- 5:30 to 6 p. m.—S. F. and N. Y. stocks.
- 6 to 6:30 p. m.—Daily bulletin and news.
- 6:30 to 7 p. m.—"Stars of Melody," NBC.
- 7 to 8 p. m.—"Armour program," NBC.
- 8 to 8:30 p. m.—Stanislav Bem's Little Symphony orchestra, Hotel Whitcomb, San Francisco.
- 8:30 to 9 p. m.—"RCA Hour," NBC.
- 9 to 9:30 p. m.—"Borden's Dairy," NBC.
- 9:30 to 10 p. m.—The Three Boys.
- 10 to 11 p. m.—Western Artist Series concert, The Olympia.
- 11 to 12 midnight—Henry Halstead's Hotel St. Francis dance orchestra.

KPO
440.9 Meters, 680 Kcys.

- 7 to 8 a. m.—S. F. and W. health exercises by Hugh Barrett, Dobbs and William H. Hancock.
- 8 to 9 a. m.—Shell Happy Time by Hugh Barrett, Dobbs and William H. Hancock.
- 9:30 to 10 a. m.—Dobbie's Daily Chat.
- 10 to 10:15 a. m.—Du Barry program, NBC.
- 10:15 to 10:30 a. m.—Libby, McNeill, Libby, NBC.
- 10:30 to 11:30 a. m.—Magazine of the Air, NBC.
- 11:30 to 12:05 p. m.—Scripture reading announcements.
- 12:05 to 12:45 p. m.—Saul Sieff and Wilbur Stump, piano duo.
- 12:45 to 1:30 p. m.—Commonwealth Club luncheon.
- 1:30 to 2 p. m.—House of Dreams.
- 2 to 2:15 p. m.—Stock market quotations.
- 2:15 to 2:45 p. m.—Kozak Radiogram.
- 2:45 to 4:30 p. m.—Baseball broadcast, CBS.
- 4:30 to 4:40 p. m.—Stock market quotations.
- 4:40 to 5 p. m.—Children's hour.
- 5 to 5:30 p. m.—Interwoven Pair, NBC.
- 5:30 to 8:45 p. m.—Federal Business

KHQ
592.5 Meters, 590 Kcys.

- 7 to 7:30 a. m.—Sunrise Pep period.
- 7:30 to 8 a. m.—Model Musical Kiosk.
- 8 to 9 a. m.—Shell Happy Time, KPO.
- 9 to 9:30 a. m.—Home Economics.
- 9:30 to 10 a. m.—Sunshine Liberty organ.
- 10 to 10:15 a. m.—Du Barry program, NBC.
- 10:15 to 10:30 a. m.—Libby, McNeill and NBC.

KGI
425 Meters, 840 Kcys.

- 9:30 to 9:59—Cooking school by Ruth Adamson of the Home Economics Department of the Portland News.
- 9:59 to 11:15—Shoppers' Guide and Town Topics program, conducted by Velva Weller, director of KOIN Women's department.
- 11:15 to 12—Vocal program.
- 12:15 to 1:30—Billy's Hawaiians.
- 1:30 to 2—Orchestra and string ensemble.
- 2 to 2:15—International speaker.
- 2:15 to 2:30—Devotional services.
- 2:30 to 2:45—Portland News matinee, news items and music.
- 2:45 to 3—String ensemble.
- 3 to 3:15—Orchestra.
- 3:15 to 4—Dinner concert on the Heathman hotel pipe organ.
- 4 to 7:30—The Benson hotel orchestra, playing from the main dining room of the Benson hotel.
- 7:30 to 8—Orchestra.
- 8 to 9—Studio string ensemble.
- 9 to 10:15—McElroy's Oregonians, from Cole McElroy's Spanish ballroom.

KGO
379.5 Meters, 790 Kcys.

- 9 to 10 a. m.—California Home Life talk, NBC.
- 10 to 10:15 a. m.—Du Barry program, NBC.
- 10:15 to 11:30 a. m.—Magazine of the Air, NBC.
- 11:30 to 12 noon—Studio staff program, NBC.
- 12 to 1:15 p. m.—Pacific Little Symphony, NBC.
- 1:15 to 1:30 p. m.—Weather, S. F. and daily bulletin.
- 1:30 to 2 p. m.—"The News in Washington," NBC.
- 2 to 4 p. m.—Edward J. Fitzpatrick Hotel St. Francis orchestra.
- 4 to 5 p. m.—Tom King detective stories.
- 5 to 5:30 p. m.—Interwoven Pair, NBC.
- 5:30 to 6 p. m.—S. F. and N. Y. stocks.
- 6 to 6:30 p. m.—Daily bulletin and news.
- 6:30 to 7 p. m.—"Stars of Melody," NBC.
- 7 to 8 p. m.—"Armour program," NBC.
- 8 to 8:30 p. m.—Stanislav Bem's Little Symphony orchestra, Hotel Whitcomb, San Francisco.
- 8:30 to 9 p. m.—"RCA Hour," NBC.
- 9 to 9:30 p. m.—"Borden's Dairy," NBC.
- 9:30 to 10 p. m.—The Three Boys.
- 10 to 11 p. m.—Western Artist Series concert, The Olympia.
- 11 to 12 midnight—Henry Halstead's Hotel St. Francis dance orchestra.

KFI
468.5 Meters, 610 Kcys.

- 8 a. m.—Shell Happy Time from KPO.
- 8 to 9 a. m.—Bess Kilmer's helpful hints.
- 9 to 9:30 a. m.—RCA Hour, NBC.
- 9:30 to 10 p. m.—NBC program "Borden's Dairy."
- 10 to 11 p. m.—Palace Hotel Dance Orchestra.
- 11 to 11:30 p. m.—Kozak Radiogram.
- 11:30 to 12 midnight—Musical Musicians, NBC.

KGO
379.5 Meters, 790 Kcys.

- 9 to 10 a. m.—California Home Life talk, NBC.
- 10 to 10:15 a. m.—Du Barry program, NBC.
- 10:15 to 11:30 a. m.—Magazine of the Air, NBC.
- 11:30 to 12 noon—Studio staff program, NBC.
- 12 to 1:15 p. m.—Pacific Little Symphony, NBC.
- 1:15 to 1:30 p. m.—Weather, S. F. and daily bulletin.
- 1:30 to 2 p. m.—"The News in Washington," NBC.
- 2 to 4 p. m.—Edward J. Fitzpatrick Hotel St. Francis orchestra.
- 4 to 5 p. m.—Tom King detective stories.
- 5 to 5:30 p. m.—Interwoven Pair, NBC.
- 5:30 to 6 p. m.—S. F. and N. Y. stocks.
- 6 to 6:30 p. m.—Daily bulletin and news.
- 6:30 to 7 p. m.—"Stars of Melody," NBC.
- 7 to 8 p. m.—"Armour program," NBC.
- 8 to 8:30 p. m.—Stanislav Bem's Little Symphony orchestra, Hotel Whitcomb, San Francisco.
- 8:30 to 9 p. m.—"RCA Hour," NBC.
- 9 to 9:30 p. m.—"Borden's Dairy," NBC.
- 9:30 to 10 p. m.—The Three Boys.
- 10 to 11 p. m.—Western Artist Series concert, The Olympia.
- 11 to 12 midnight—Henry Halstead's Hotel St. Francis dance orchestra.

KPO
440.9 Meters, 680 Kcys.

- 7 to 8 a. m.—S. F. and