

How's The Road?

Answers Framed in Weekly Report From Oregon State Highway Commission

Weekly report on condition of Oregon State highways by state highway commission.

September 15, 1929.

Pacific Highway
Portland - Coquille - Oregon City - Salem - Albany - Harrisburg - Junction City - Eugene - Cottage Grove - Roseburg - Grants Pass - Medford - Ashland - California State Line: paved.

Paving operations under way between Canemah and New Era. North bound traffic routed over detour from New Era to Oregon City. South bound traffic in general permitted to pass over highway but subject to being diverted over detour for short periods.

West Side Pacific Highway
Portland - Newberg - McMinnville - Corvallis - Junction City - Eugene: Paved.

Columbia River Highway
Astoria - Rainier - St. Helens - Portland: Paved. Portland - Hood River - The Dalles: Paved. The Dalles - Arlington - Umatilla: Oiled macadam.

Old Oregon Trail
Umatilla - Pendleton - LaGrande - Baker - Huntington - Ontario: Oiled macadam.

Roosevelt Coast Highway
Clatsop, Tillamook and Lincoln counties.
Astoria - Seaside: Paved.
Seaside - Mohler - Brighton - Lake Lytle - Rockaway - Garibaldi - Bay City - Wilson River: Oiled macadam.

Beaver - Hebo - Neskowin - Devils Lake - Siletz - River - Otter Rock - Newport: Part paved, part oiled macadam.

Roosevelt Coast Highway
Douglas, Coos and Curry counties.
Hood River - Bandon - North Bend - Coquille: Paved.

Coquille - Bandon - Port Orford - Goddard - Brookings - (California State line): Part oiled macadam; part macadam. Free ferry across Rogue river at Gold Beach, 7 a. m. to 11 p. m.

Coos Bay - Roseburg Highway
Junction Pacific highway - Myrtle Point - Coquille: Macadam. Surfacing operations under way between Endicott creek and Mystic creek.

Green Springs Highway
Junction Pacific highway - Keno - Klamath Falls: Macadam. Construction operations between Keno creek and Jenny creek.

Siuslaw Highway
Junction Pacific highway - Cheshire - Goldson - Blachly - Rainier - Mapleton: Macadam. Mapleton - Florence: Dirt road. Impassable in wet weather.

Corvallis - Newport Highway
Corvallis - Philomath - Eddyville - Newport: Oiled macadam.

Tualatin Valley Highway
Portland - Hillsboro - Forest Grove - Carlton - McMinnville: Paved.

Mt. Hood Highway
Portland - Government Camp - Hood River: Paved. Multnomah County line, balance oiled macadam.

The Dalles - California Highway
The Dalles - Dufur - Maupin - Wasco county line - Madras - Redmond - Bend - Lapine - Crescent - Fort Klamath - Klamath Falls: Oiled macadam.

Klamath Falls - Merrill - California state line: Macadam. Construction operations under way between Klamath Falls and Lakeview Junction. Detour for through traffic: good condition.

Oregon - Washington Highway
Pendleton - Washington state line: Paved. Pendleton - Pilot Rock - Heppner - Jone - Heppner Junction: Macadam.

McMinnville - Tillamook Highway
McMinnville - Sheridan: Paved. Sheridan - Willamina - Grande Ronde - Hebo: Oiled macadam.

Klamath Falls - Lakeview Highway
Klamath Falls - Bonanza: Macadam.

Bonanza - Lorenz Mill: Newly graded market road. In rough condition.

Lorenz Mill - Beatty - Lakeview: Macadam.

Fremont Highway
Bend - Lapine: Oiled macadam. Lapine - Silver Lake - Summer Lake: Unimproved dirt road.

Summer Lake - Paisley: Nine miles macadam; 18 miles fair dirt road.

Paisley - Lakeview: Macadam. Lakeview - New Pine creek - California state line: Partly macadamized, balance fair dirt road.

Central Oregon Highway
Bend - Burns: First 12 miles under construction. Traffic detoured over old Burns - Burns road, fair condition; 127 miles fair dirt road.

Burns - Crane: Macadam. Burns - Crane: Macadam. Burns - Vale via Drewsey: Earth road, rough.

Sherman Highway
Biggs - Wasco - Grass Valley - Kent - Shaniko - Junction - The Dalles - California highway: Macadam. Reconstruction operations between Moro and Grass Valley. Through travel advised to use The Dalles - California highway.

John Day Highway
Arlington - Condon - Fossil - Spray - Dayville - Mt. Vernon - John Day - Prairie City - Astoria - Unity - Ironside - Cow Valley - Brogan - Jamieson - Vale - Ontario: Macadam.

Ochoco Highway
Redmond - Prineville - Mitchell: Macadam.
Mitchell - Antone - Dayville: Dirt road, fair condition.
Center Lake Highway
Medford - Trail - Prospect - Union creek - Fort Klamath Junction: Oiled macadam.
Wallowa Lake Highway
La Grande - Island City: Paved. Island City - Elgin - Minam - Wallowa - Lostine - Enterprise - Joseph - Wallowa Lake: Macadam. Resurfacing operations under way between Lostine and Enterprise.
Baker - Cornucopia Highway
Baker - Halfway: 30 miles macadam and 30 miles grader roadbed, good condition.

Redwood Highway
Grants Pass - Deer creek - Kerby - California state line: Oiled macadam. From state line to Crescent City, 50 miles macadam.

Kerby - Oregon Caves: 10 miles macadam; 9 miles dirt road.

McKenzie Highway
Eugene - Springfield - Waterville - Blue River - Belknap Springs - Sisters - Redmond: Macadam. Resurfacing under way between Springfield and Waterville. Drive carefully.

Baker - Unity Highway
Baker - Unity: 25 miles macadam, 21 miles cushioned roadbed. Good condition.

Pendleton - John Day Highway
Pendleton - Pilot Rock - Larzinka Ranch: Macadam.
Larzinka Ranch - Albee: Surfacing operations under way.
Albee - Ukiah: Surfaced.

Ukiah - Ritter: Rough mountain road, steep grades.

Ritter - Mt. Vernon: Partially graded and surfaced, fair condition.

Enterprise - Flora Highway
To Lewiston, Idaho
Enterprise - Flora: Improved road to Paradise, remaining section rough country road to Anantone.

Santiam Highway
Albany - Lebanon: Oiled macadam.
Lebanon - Shear's Hill: Gravel road.
Shear's Hill - Cascadia: Macadam.

Willamette Highway
Goshen - Lowell: Oiled macadam.
Lowell - Oakridge: Rough but passable.

Albany - Corvallis Highway
Albany - Corvallis: Paved.
Alsea Highway
Junction Corvallis - Newport highway - Alsea: Oiled macadam.
Alsea - Tidewater - Waldport: Macadam.

Lower right: Floating Service Station which dispenses Violet Ray gasoline and General oils to the fishing fleet at Neah Bay, Wash. Left: The Mary Ellen, the tanker which keeps the station supplied, and upper right: part of the fishing fleet serviced by the station.

Upper right: A Durant motor car climbing one of the Northern California's noted motorcycle test hills—"Motorcycle Hill," Santa Cruz. By virtue of the feat... a challenge trophy offered by a Santa Cruz newspaper for the fastest time made by automobile up the slope was awarded to officials of the Western Durant factory. The car, with the driver and observer, is shown above on one of the hill's numerous steep pitches.

Left: The Mary Ellen, the tanker which keeps the station supplied, and upper right: part of the fishing fleet serviced by the station.

Left: The Mary Ellen, the tanker which keeps the station supplied, and upper right: part of the fishing fleet serviced by the station.

Left: The Mary Ellen, the tanker which keeps the station supplied, and upper right: part of the fishing fleet serviced by the station.

Left: The Mary Ellen, the tanker which keeps the station supplied, and upper right: part of the fishing fleet serviced by the station.

Left: The Mary Ellen, the tanker which keeps the station supplied, and upper right: part of the fishing fleet serviced by the station.

Left: The Mary Ellen, the tanker which keeps the station supplied, and upper right: part of the fishing fleet serviced by the station.

Left: The Mary Ellen, the tanker which keeps the station supplied, and upper right: part of the fishing fleet serviced by the station.

Left: The Mary Ellen, the tanker which keeps the station supplied, and upper right: part of the fishing fleet serviced by the station.

Left: The Mary Ellen, the tanker which keeps the station supplied, and upper right: part of the fishing fleet serviced by the station.

Left: The Mary Ellen, the tanker which keeps the station supplied, and upper right: part of the fishing fleet serviced by the station.

Left: The Mary Ellen, the tanker which keeps the station supplied, and upper right: part of the fishing fleet serviced by the station.

Left: The Mary Ellen, the tanker which keeps the station supplied, and upper right: part of the fishing fleet serviced by the station.

Left: The Mary Ellen, the tanker which keeps the station supplied, and upper right: part of the fishing fleet serviced by the station.

Left: The Mary Ellen, the tanker which keeps the station supplied, and upper right: part of the fishing fleet serviced by the station.

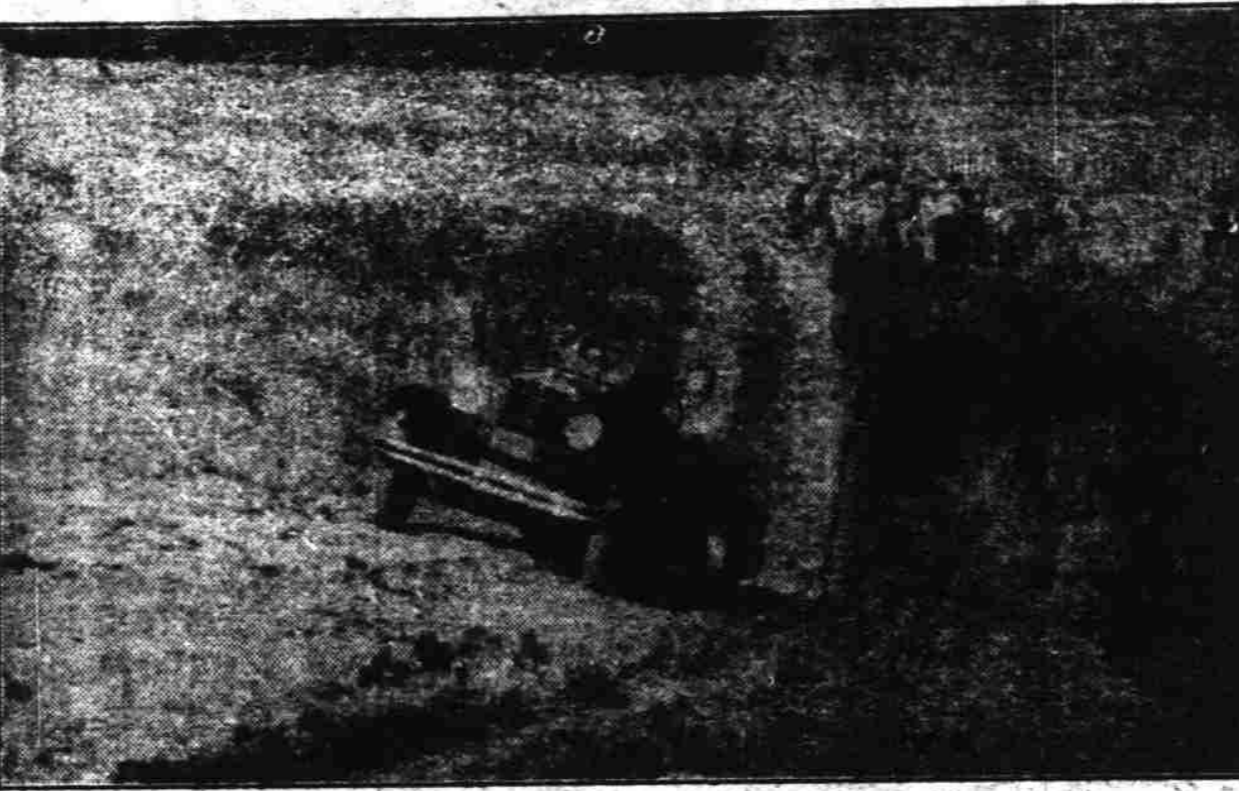
Left: The Mary Ellen, the tanker which keeps the station supplied, and upper right: part of the fishing fleet serviced by the station.

Left: The Mary Ellen, the tanker which keeps the station supplied, and upper right: part of the fishing fleet serviced by the station.

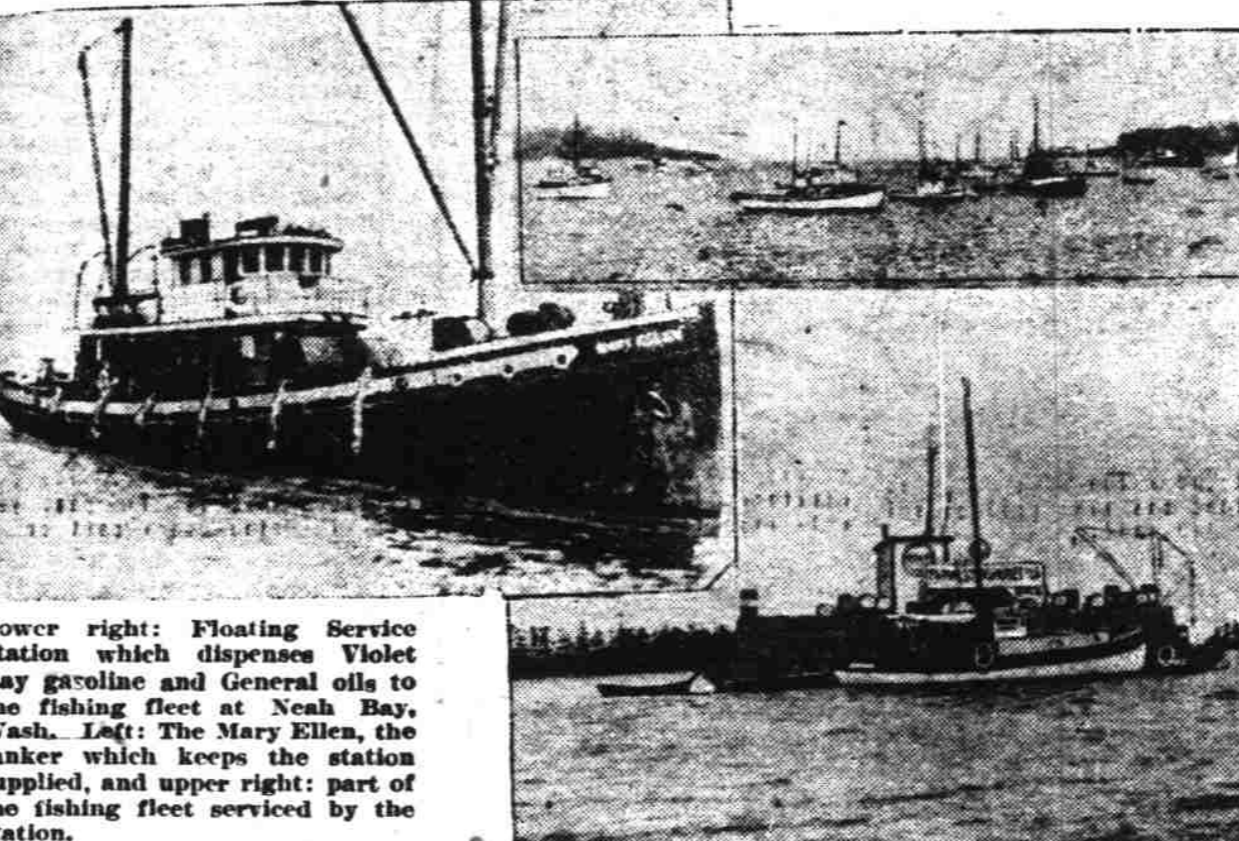
Left: The Mary Ellen, the tanker which keeps the station supplied, and upper right: part of the fishing fleet serviced by the station.

Left: The Mary Ellen, the tanker which keeps the station supplied, and upper right: part of the fishing fleet serviced by the station.

ANOTHER RECORD FOR DURANT



More performance laurels were gathered for Durant motor cars last week when a Durant Six-Sixty roadster climbed one of Northern California's noted motorcycle test hills—"Motorcycle Hill," Santa Cruz. By virtue of the feat... a challenge trophy offered by a Santa Cruz newspaper for the fastest time made by automobile up the slope was awarded to officials of the Western Durant factory. The car, with the driver and observer, is shown above on one of the hill's numerous steep pitches.



Lower right: Floating Service Station which dispenses Violet Ray gasoline and General oils to the fishing fleet at Neah Bay, Wash. Left: The Mary Ellen, the tanker which keeps the station supplied, and upper right: part of the fishing fleet serviced by the station.

DRIVES NEW DURANT ACROSS COUNTRY

Driving from Lawrence, Massachusetts, to California in a Durant "66" sedan, Miss Marian Collins rolled into San Francisco during the past week, claiming to be the first woman to drive one of the new four-speed Durant creations on a trans-continental trip, according to word received today by Hobart Shady of the Salem Auto company, local Durant dealers from the western Durant factory. From her home in Massachusetts, Miss Collins drove to New York, thence to Philadelphia, Pittsburgh, Indianapolis, and St. Louis. From St. Louis she went south to Memphis, then to Little Rock and Fort Smith, Arkansas; Tulsa, Oklahoma, and back up to Kansas City. She then drove across Kansas and Colorado to Denver, south to Colorado Springs, Pueblo and Trinidad to Albuquerque and entered California over the Santa Fe Trail. While in the southern part of the state, Miss Collins drove down the coast to San Diego and spent a few days at Coronado and Agua Caliente. She then drove north over El Camino Real to San Francisco and will spend two weeks in the bay district before returning east by way of Portland, Seattle, Yellowstone Park, Salt Lake City, Cheyenne, Omaha, Chicago, South Bend, Toledo and Cleveland. When Durant factory officials commented on the extent of her journey, Miss Collins remarked that it is nothing for a woman to drive across the continent alone. The modern motor car is so efficient and the roads so good that the average woman is just as capable of driving a car from the Atlantic to the Pacific and back again as the average man. Claims totaling \$1315.70 have been paid to Statesman readers by the North American Accident Insurance Co., in the past year. These claims were paid on the \$1.00 policy issued to Statesman subscribers.

Tiny Woman Writes Real Mysteries

(Associated Press Feature Service Writer)
WASHINGTON, — (AP) — A quiet, inconspicuous little Washington woman writes such thrilling detective stories that presidents and other great men of the nation read them with interest. She is Natalie Sumner Lincoln. She started writing in 1912. Since then she has written 21 detective novels, all of which have been published. Most of them are still big sellers. Daytimes Miss Lincoln edits the Daughters of the American Revolution magazine. At night she turns her imagination loose and her typewriter keys keep up an incessant clatter as wily villains and keen sleuths race across the pages. President Wilson and J. Pierpont Morgan were among many prominent men who tured to Miss Lincoln's books for relaxation and diversion. They followed "The Blue Car Mystery," "The Moving Finger" and "The Nameless Man" into the late hours. One would never take Miss Lincoln for a writer of hair-raising thrillers. She wears glasses. Her hair is parted in the middle and done up in a tight little knot in the back. But her eyes hold a gleam of humor. Miss Lincoln had never done any writing before her first book, "The Trevor Case," in 1912. She wrote 78,000 words of that in three weeks. It found immediate acceptance with a publisher. Her latest book, "The Fifth Latchkey," is having a big sale.

Women are Interested In Aviation

WICHITA, Kas.—(AP)—Air-mindedness has become a reality of aeronautical study for women of Wichita, whose numerous airplane factories have made it a Detroit of aviation. A class exclusively for women has been organized at a Wichita flying school. Housework and society fill the day for these enthusiasts, so they're learning to fly by night. They study the mechanics of airplane engines before pilots teach them the art of manipulating planes in mid-air. Evenings find stenographers, matrons and housewives on the job.

TWEEDS DOMINATE FALL STYLES, WORD

By BARBARA BEAUFORT
Fashion Editor
Associated Press Feature Service
PARIS—(AP)—Tweeds are at the top of the clothes heap, dominating daytime autumn styles. Fashion houses show woolen mixtures of tweed type, for coats, suits and dresses, singly and in combination. When the material is not actually tweed weave it may be jersey with a tweed pattern, so interperched with mixtures are the designers. Tweed coats, lined with fur, are to replace fur coats for sport to a large degree, apparently. Nearly all the important designers show the fur-lined topcoats as part of tweed ensembles of dress, and seven-eighths or three-quarter coat.

Read the Classified Ads.

CHEVROLET

Pick the car you want

... and you can be assured when you buy it from us that it represents a Dependable and Honest Value!

No matter what price you want to pay for a used car—we can supply you with a better automobile than you ever expected to buy for that amount of money!

We have on hand at this time the widest selection of fine used cars in our history. Many of them cannot be sold from new. The motors have been thoroughly overhauled—upholstery and hardware are in excellent condition—and some have even been refinished in pleasing new colors.

Here is your opportunity to get a real bargain! And you can have absolute confidence in the cars that bear the red "O. K. that Counts" tag—because they have been carefully checked over by skilled inspectors, and represent definite, known values.

Come in and pick out your car now—while we have a wide selection for you to choose from!

LOOK at These Bargains!

- 1927 Buick 5 passenger standard six sedan. All new tires. Paint and upholstery perfect. A car you can drive and be proud of. \$275.00 down, \$54 per month, G.M.A.C. Cash price \$825.00.
- 1928 Dodge Standard Six. This is a four-door sedan that has had good care and is in the best of condition. Has leather upholstery, new tires, and is fully guaranteed. Down payment \$225; monthly payment \$39. Cash price \$625.00.
- 1928 Chev. convertible cabriolet. This is the Red Sport coupe you have admired so much on the street. Fully equipped and fully guaranteed, \$550 G.M.A.C. Terms are \$150 down, \$35 per month.
- 1928 Essex 4-door sedan; overhauled, new tires; positive guarantee. If you like an Essex, come look this one over and drive it. The price is \$525.00. G.M.A.C. terms. \$150 down monthly payment \$32.

USED CARS
with an OK that counts

Douglas McKay Chevrolet Co.
430 N. Commercial Street, Tel. 1802

Associate Dealers:
Dallas Chev. Co., Dallas Ball Bros., Turner
Geo. Dorr, Woodburn Hallady's Garage, Monmouth
Wm. Predeck, Mt. Angel

READ THE NEW GUARANTEE THEN SEE THE TIRE

Miller's
New Geared-to-the-Road Balloons

are guaranteed to outwear any other tires of equal price when run under the some conditions!

It's A Great Tire
Come in, see this new tire and let us explain how so complete a guarantee can be made.

Your old tires taken in as part payment

Miller Tire Service Co.
"RUSS" SMITH
197 So. COMMERCIAL STREET
PHONE 313

Phone 313 For FREE Road Service

Guarantee: We guarantee this tire to outwear any other tire of equal price when run under the same conditions. THE MILLER RUBBER CO. of N.Y.

ESSEX
the Challenger

GREATEST IN PERFORMANCE

ECONOMY—never approached with like performance. You may expect 18 miles to the gallon and upward—many get more—in your Essex the Challenger. Important taxicab companies have chosen Essex the Challenger as exclusive equipment because its total of all operating expenses was the lowest in the whole motor world. To every buyer there is assured fuel and oil economy, durability, tire wear and low maintenance expense.

RELIABILITY—official tests, as well as the experience of 200,000 owners, with the lowest actual records of service cost, establish Essex the Challenger as the "Reliability Car of the Year." Two Essex entries with perfect scores, won the Grand Prize of the famous "Tour de France" reliability classic, against a large field of costlier American and European cars. No other car of whatever price level equalled the perfect record scored by both Essex entries.

SPEED—faster than any car ever built in its price class—Not just a fine drawn shade of advantage but a smashing big superiority that easily distances anything in this field. Its supremacy is not based on theoretical horsepower and specially adapted test devices. Essex speed is a real and usable quality—established on the road—established in records at better than 70 miles an hour, all over the country—established by stop-watch timing over measured distances—established by owners who know and constantly demonstrate that nothing can touch it at the price.

GETAWAY—here again the proofs are actual, from 5 to 25 miles in 7 seconds—from 10 to 70 in 19.2 seconds. But more important is the value of Essex getaway in daily service. Its ability is so well known that everyone expects it to be first away at the signal "Go."

SMOOTHNESS—exclusive to the patented Super-Six principle, which no other maker can copy.

Only a few dollars more per month than the lowest priced cars on the market, to own and enjoy this fine and beautiful Super-Six. For instance in this city your first payment may be as low as \$246.00, and your monthly payment \$45.04. Your present car will be accepted as cash, at liberal appraisal, and will probably cover the entire first payment. The H. M. C. Purchase Plan offers lowest available terms on balance.

EASY TO BUY
EASY TO OWN

\$695 AND UP AT FACTORY

STATE MOTORS, Inc.
Corner Chemeketa and High

HOLLIS SMITH GARAGE Dallas
ROBBIE'S AUTOMOTIVE SHOP Independence
J. P. JENSEN Monitor
M. B. FINSETH Silverton
WILLAMINA GARAGE Willamina

Telephone 1000
JOHNSON'S AUTOMOTIVE GARAGE, Pedee
FRED LESTER Sheridan