

# HOW'S THE ROAD?

Answers Framed in Weekly Report From Oregon State Highway Commission

### Pacific Highway

Portland-Oswego-Oregon City-Salem-Albany-Harrisburg-Junction City-Eugene-Cottage Grove-Grants Pass-Medford-Ashland-California State Line: Paved.

Charm of Oregon's great out-of-doors is calling to the tourists of the state and the attraction of the highways and the byways of the state loom large. This week's report on the condition of the road is: present highway but occasionally diverted over detour for short periods.

Paving operations under way between Canemah and New Era. South bound traffic routed over West Side Pacific Highway.

Portland-Newberg-McMinnville-Corvallis-Junction City-Eugene: Paved.

Columbia River Highway Astoria-Rainier-St. Helens-Portland: Paved. Portland-Hood River-The Dalles: Paved. The Dalles-Arlington-Umatilla: Oiled macadam.

Oiling operations under way between the Union county line and Baker, and between Pendleton and Meacham.

Roosevelt Coast Highway Clatsop, Tillamook and Lincoln Counties

Astoria-Seaside: Paved. Seaside-Mohler-Brighton-Lake Lytle-Rockaway-Gardiner-Bay City-Wilson: Paved. Oiling operations under way between Cannon Beach Junction and Hamlet Junction.

Wilson River-Tillamook-Beaver: Part paved, part macadam. Beaver-Hebo-Neskowin-Devils Lake-Siletz River-Otter Rock-Newport Macadam.

Roosevelt Coast Highway Douglas, Coos and Curry Counties Reedsport-Lakeside-North Bend: Macadam. Free ferry across Coos Bay, 7 a. m. to 11 p. m.

Road from Drain to Reedsport open and in fair condition. North Bend - Marshfield - Coquille: Paved.

Coquille-Bandon-Port Orford-Gold Beach-Brookings-California State Line: Macadam.

Free ferry across Rogue river at Gold Beach, 7 a. m. to 11 p. m.

Coos Bay-Roseburg Highway Junction Pacific Highway-Myrtle Point-Coquille: Macadam. Surfacing under way between Endicott creek and Mystic creek.

Oiling operations under way between Roseburg and Bridge. Green Springs Highway Junction Pacific Highway-Keno-Klamath Falls: Macadam.

Siuslaw Highway Junction Pacific Highway-Cheshire-Goldson-Elachly-Rainrock-Mapleton: Macadam.

Mapleton-Florence: Dirt road. Impassable in wet weather. Oiling operations under way between Cheshire and Blachly.

Corvallis-Newport Highway Corvallis-Philomath-Eddyville-Toledo-Newport: Macadam. Resurfacing work under way on Kline Hill Section. Loose gravel, drive carefully.

Tualatin Valley Highway Portland-Hillsboro-Forest Grove-Carlton-McMinnville: Paved.

Mt. Hood Highway Portland-Government Camp-Hood River: Paved to Multnomah county line, balance oiled macadam.

Klamath Falls-Lakeview Highway Klamath Falls-Bonanza: Macadam.

Bonanza-Lorens Mill: Newly graded market road. In rough condition.

Lorens Mill-Beatty-Lakeview: Macadam.

The Dalles-California Highway The Dalles-Dufur-Maupin-Wasco County Line-Madras-Redmond-Bend-Lapine-Chescent-Port Klamath-Klamath Falls: Oiled macadam.

Klamath Falls-Merrill-California State Line: Macadam. Construction operations under way between Klamath Falls and Lakeview Junction.

Oregon-Washington Highway Pendleton-Washington State Line: Paved. Pendleton-Pilot Rock-Heppner-Ione-Heppner Junction: Macadam.

McMinnville-Tillamook Highway McMinnville-Sheridan: Paved. Sheridan-Williamine-Grane-Ronde-Hebo: Oiled macadam.

Fremont Highway Bend-Lapine: Oiled macadam. Lapine-Silver Lake-Summer Lake: Unimproved dirt road.

Summeh Lake-Pulsley: Nine miles, macadam, 18 miles fair dirt road.

Lakeview-New Pine Creek-California State Line-Partly macadamized, balance fair dirt road.

Central Oregon Highway Bend-Burns: First 12 miles under construction, traffic detoured over Bend-Burns road, fair condition; 127 miles fair dirt road.

### Crater Lake Highway

Medford-Trait-Prospect-Union Creek-Fort Klamath Junction: Oiled macadam.

La Grande-Wallowa Lake La Grande-Island City: Paved.

Island City-Elgin-Minam-Wallowa-Lostine-Enterprise-Joseph-Resurfacing under way between Lostine and Enterprise.

Baker-Cornucopia Highway Baker-Halfway: 30 miles macadam and 30 miles graded road-bed, good condition.

REDWOOD HIGHWAY Road to Oregon Caves Grants Pass-Deer Creek-Kerby-California State Line: Macadam.

From state line to Crescent City, 50 miles macadam.

Kerby-Oregon Caves: 10 miles macadam, 9 miles dirt road.

Mckenzie Highway McKenzie pass to O K Baker-Unity Highway Baker-Unity: 25 miles macadam, 21 miles cushioned road-bed, good condition.

Pendleton-John Day Highway Pendleton-Pilot Rock-Lazinka ranch: Macadam.

Lazinka Ranch-Albee: Graded road open for travel.

Albee-Ukiah: Surfaced. Ukiah-Ritter: Rough mountain road, steep grades.

Ritter-Mt. Vernon: Partially graded and surfaced, fair condition.

ENTERPRISE-FLORA To Lewiston, Idaho Enterprise-Flora: Improved road to Paradise, remaining section rough country road to Anasay Junction.

Albany-Lebanon: Oiled macadam.

Lebanon-Shea's Hill: Gravel road.

Shea's Hill-Cascadia: Macadam, road impassable between Cascadia and Ranger Station, 3 miles.

Willamette Highway Goshen-Lowell: Macadam.

Lowell-Oakridge: Rough but passable.

Albany-Corvallis Highway Albany-Corvallis: Paved.

Alsea Highway Junction Corvallis - Newport Highway-Alsea: Oiled macadam.

Alsea-Tidewater-Waldport: Macadam.

All oiling operations so conducted that there is no splashing of cars.

The Pacific Highway is in good condition to California points, reports the Touring Bureau of the Oregon State Motor Association, being paved throughout Oregon and then oil and had-surfaced the remainder of the way south with the exception of a short detour of eight miles where new construction work is being carried on between Weed and Gazelle.

The detour is a little narrow and dusty and motorists are cautioned to drive carefully. Very little inconvenience and delay caused by

# Ancient Custom Bows to Nash "400"



For centuries before the death of Dr. Sun Yat Sen, China's great men have been borne to their final resting places on the shoulders of worshipful coolies. It was little less than revolutionary when the revolutionaries of the Chinese Republic and founder of Communistism, make his way over a newly laid concrete highway to the sacred mountain with a Nash "400" funeral car bearing the body of their late leader. The picture shows the special Nash funeral car, covered with symbolical Chinese funeral decorations, proceeding to the mountain services. Diplomatic representatives from some nineteen countries joined Chinese officials in paying their respects to Dr. Sen's memory.

the detour and the road is in excellent condition throughout.

Tires and ignition systems cause motorists the most trouble, according to an analysis just completed by the service departments of the 1071 clubs affiliated with the American Automobile Association.

The Oregon State Motor Association, Three A. club in this state, reports a similar trend in its rendering of statewide Free Emergency Road Service to members.

During 1928, A. A. clubs handled 226,236 requests for tire help, 183,031 summons because of faulty ignition, towed 95,050 cars and took gas to 32,207 stranded motorists. Among other important calls were:

Stareer 82,481; battery 63,829; wrecks 26,279; carburetor 18,853; stuck in mud 17,282; miscellaneous 14,140; gas line 14,139; frozen 3,928; brakes 3,142; lights 2,357 and glass 788.

Calls for tires and ignition represent 52.1 per cent of all emergency service requests, while the "big seven" combination, including tires, ignition, tow, starter, battery, out of gas and wrecks represents 90.5 per cent.

The Redwood and Roosevelt highways are in excellent condition and each is carrying an increased portion of summer traffic according to the Touring Bureau of the Oregon State Motor Association which points out that this scenic route is now practically a hard surface road the entire distance from Reedsport to San Francisco or from Grants Pass to San Francisco.

Tourists are inquiring regarding the condition of this road and a greatly increasing number are using it as an alternate route to the Pacific highway in going to or returning.

All roads to Crater Lake are from California points.

Adoption of the strongest program of motoring policies in behalf of organized automobile owners in its history featured the 27th annual convention of the American Automobile Association in Buffalo, N. Y., last week, according to word received by the Oregon State Motor Association.

According to the reports wired to the Motor Association, the platform of the A. A. for the ensuing year will feature:

1. Appointment of a committee to conduct a nation-wide investigation of the tendency to increase motor vehicle taxation and the practice in many states of diverting motor vehicle and gasoline taxes to other than highway purposes.

# SEEK CHEAPER WAY TO BUILD HIGHWAYS

By ALLEN QUINN Associated Press Automobile Editor

ARLINGTON, Va.—(AP)—A cheaper method of building concrete highways is sought by the United States bureau of public roads.

The bureau is building a nine foot concrete road a mile and a half long at its experimental laboratory here. This road will never bear traffic. It will be cut up for testing specimens as to their strength and wearing qualities.

When the tests are completed engineers of the bureau hope to show that the prevailing mixtures used in making concrete for highways may be modified by using larger proportions of gravel, slag or crushed stone, and at the same time, result in stronger and more durable pavements.

This, the bureau points out, would effect a great saving in highway construction costs as the principal item of expense for materials is the cost of concrete.

The prevailing mixture for concrete pavements is one part of cement to two parts of sand and three and a half parts of coarse material. Engineers of the bureau believe a saving of \$1,000 a mile in the cost of concrete highways will be effected if the proportion of coarse material can be increased to four and a half parts.

The test road is made in 10-foot sections, each containing a different kind, amount or size of coarse material and a different amount of water. Mixing, pouring and finishing is being done in accordance with modern paving practice.

After the slabs are cured they will be drilled for test cores and also will be sawed into beams for bending tests.

# DEMAND FOR BUICKS PRESSING PLANTS

FLINT, Mich., Aug. 16.—Production at the plants of the Buick Motor company is being rapidly stepped up to meet the demand for the new 1930 models, which were introduced to the public in a nation-wide display on July 27. Reports from dealers throughout America indicate that interest in the new line is running unusually high and that sales are being made in greater volume than at any time in recent years.

Buick's output for the month of July reached 25,695 cars and officials state that, in gearing the production to meet the sales demand, it will be necessary to boost the output even more during the month of August. Upwards of two million persons saw the 1930 Buicks in the larger cities on the day the cars were shown for the first time.

the department says, resulting in less breakage of the pavement edge.

More than 2,000 miles of the 5,000 miles of hard surfaced highways in Ohio were painted with the center line last year, and this year 20,000 gallons of white paint are being used in striping the roads at a cost of six-tenths of a cent a foot.

A specially prepared, quick drying, durable paint is applied by a machine. One gallon of paint

makes from 750 to 950 feet of 4 1/2 inch stripe, depending upon the type of pavement.

The paint is applied in broken lines because of the lessened expense and because the lines show up better that way at night. Automobile headlights clearly bring out the continuation of the line after an open space. Both white and black lines are used, the white on dark or discolored pavements and the black on light concrete slabs.

**HINTS**  
for your  
**SUNDAY DRIVE**  
We Suggest  
**A Trip to one of the Tillamook Beaches**

Leave Salem on the west side highway and go to Rickreall and Amity. At Amity take the cutoff to Bellevue and Sheridan 34 miles from Salem. From here follow the coast road on to Hebo 71 miles from Salem. Go straight ahead at Hebo on 30 miles to Tillamook. From Tillamook it is 68 miles to Netarts and 9.8 miles to Oceanside. There are many beautiful beaches within a 15 mile radius of Tillamook.

**BEFORE YOU GO PUT ON A SET OF NEW MILLER TIRES**  
GEARED TO THE ROAD

Your trip will not be marred by tire trouble if you have Miller's on your car.

**FREE ROAD SERVICE ANYWHERE IN SALEM PHONE 313**

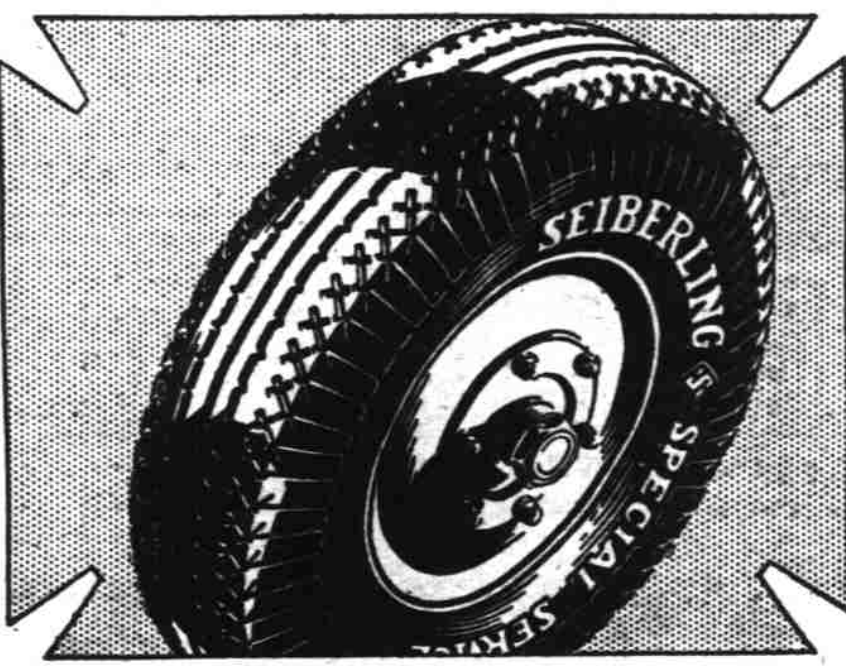
**Miller Tire Service Co.**  
"RUSS" SMITH  
197 So. Commercial Street—PHONE 313

# Let Us Demonstrate

The advantages of our conveniently located Super Unit right down town across from the city hall where you may have day or night call and deliver service. Every thing right at hand; Vulcanizing and tire service, your car washed clean, polished to look like new, a thorough grease job by an experienced mechanic, your tires inflated to the right pressure at our Automatic air regulator.

Brake belt and ignition service in charge of Mike Panek and Chet Starr.

# It's Sure Tough!



Here's a tire that's bigger—that's better—and Seiberling has put a tread on this Special Service Tire that's tougher than anything we've ever met in the tire business!

And we back it up with a Protective Service Plan which guards you for a whole year against further tire expense due to accidents to this tire.

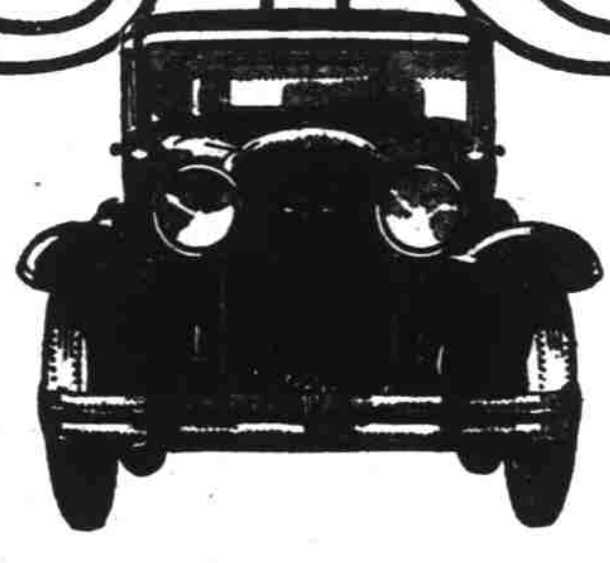
We carry all sizes of replacement Balloons for your high pressure tires without change of wheels.

Corner Chemeketa and High St.

**Day & Niles INC.** Phone 471

**DAY and NIGHT SERVICE**

# THE New BUICK



The Greatest success in all Buick history

More people have purchased New Buicks during the past two weeks than in any similar period of any previous year

The New Buick with Body by Fisher has met with a veritable landslide of public demand. Many purchased before ever seeing the car—many thousands of others placed their orders the first few days it was on display—other thousands have been taking demonstrations and then making Buick their choice.

The total demand during these two weeks is from three to five times as great as that for any other automobile priced below \$1200.

Popularity so overwhelming carries an unmistakable message to every prospective motor car buyer: See the new Buick—drive it—compare it—and you'll quickly discover that it's the greatest dollar-for-dollar value in the entire quality field.

BUICK MOTOR COMPANY, FLINT, MICHIGAN  
Division of General Motors Corporation

Canadian Factories: McLaughlin-Buick, Oshawa, Ont. Builders of Buick and Marquette Motor Cars

NEW LOW PRICES  
118" Wheelbase Models \$1225 to \$1295 • 124" Wheelbase Models \$1465 to \$1495  
132" Wheelbase Models \$1525 to \$1995

These prices E. A. S. factory. Special equipment extra. Buick delivered prices include only reasonable charges for delivery and financing. Convenient terms can be arranged on the Liberal GMAC Time Payment Plan. Consider the delivered price as well as the list price when comparing automobile values.

**OTTO J. WILSON**  
388 N. Commercial Telephone 220  
WHEN BETTER AUTOMOBILES ARE BUILT...BUICK WILL BUILD THEM