

Graham-Paige Introduces 1930 Sixes And Eights

New Lines Show Many Improvements; Retain Four Speed Transmission

Graham-Paige today introduces its 1930 models, presenting a line of three sixes and two eights replete with chassis and body improvements. All models except the lowest-priced six have the standard-shift four-speed transmission, which has been a feature of the line for two and a half years. The Graham-Paige company having led the whole industry in recognizing the advantages of the four-speed drive and in perfecting its mechanism.

The 1930 models, although representing substantially increased value, are offered without change of price, beginning with \$355 for the two-door sedan on the 612 chassis, which is now built three inches longer than formerly and has a larger engine.

One of the most striking features of the new Graham-Paige line is an exclusive innovation—the use of adjustable seats, rear as well as front, in all six-cylinder models and the 127-inch wheelbase eight. The rear seat cushions offer a choice of two positions, changing the depth and the slope of the seat. Full width front seats as well as two separate seats of the two-door model 612 may be shifted mechanically, while occupied, over a wide range of position. Since the clutch and brake pedals of all Graham-Paige cars, and also (except in the 612) the steering column, are fully adjustable, the new models offer the widest possible variation in driver and passenger position. In short, the Graham-Paige can be fitted to each individual as if built to his size and measurements.

Features of New Line, Summarized, the outstanding features of the Graham-Paige line for 1930 are as follows:

A completely new model 612 chassis of 115-inch wheelbase and larger engine, giving increased power at lower engine speed (64 h. p. at 3000 r.p.m.).

Bodies of advanced structural design.

Superior riding comfort, attained not only through the adjustability of both front and rear seats, but through the use of over-padded seat cushions, form-fitting seat and back contours, and extra seat and back springing.

Clear-vision instrument panels, without ornamentation but strikingly handsome in appearance.

New-type glass visor in chromium brackets (except 612).

Three-spoke steering wheels (safety-type), models 612 and 615.

Inspection of the new 612 chassis, and of the other two sixes and the two eights shows the consistent use throughout the line of the latest refinements and improvements in design and equipment. For once, however, a new line of cars is presented in which the achievements of the body engineers are likely to arouse more interest among motorists in general than are the mechanical details, even with one new chassis model in this line-up.

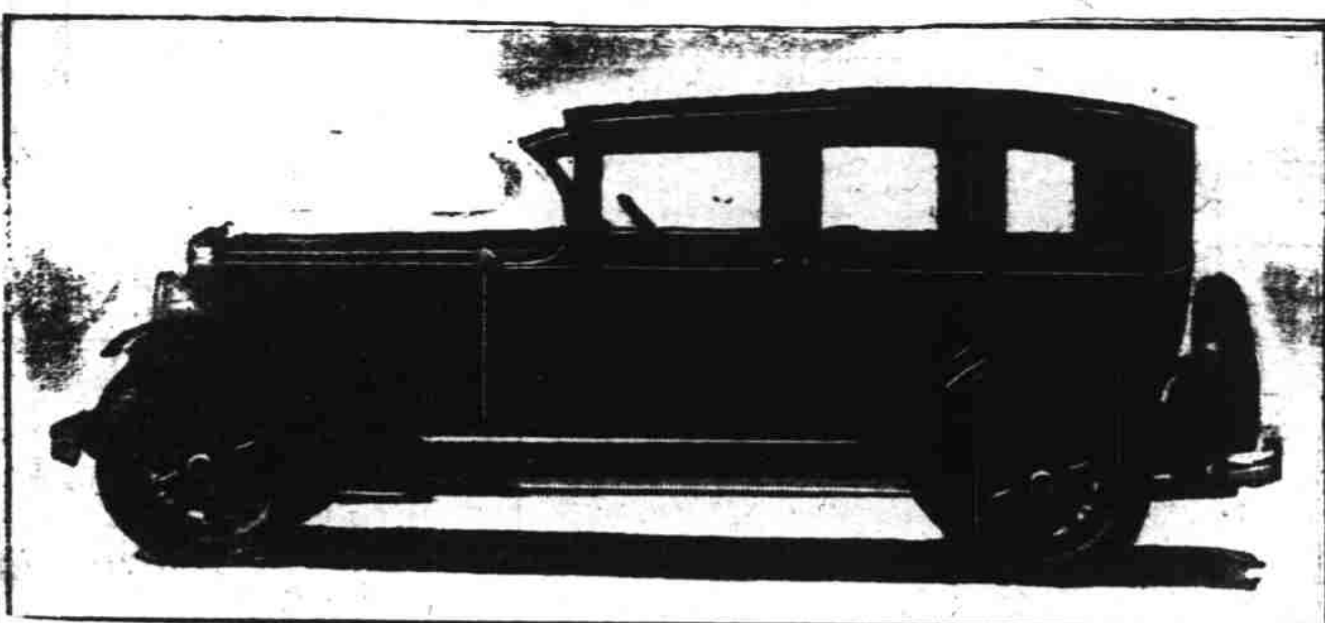
Designed for Comfort and Ease. The 1930 Graham-Paige models reflect the results of a comprehensive campaign to promote riding comfort and ease for driver and passengers, through adjustable seating position, improved seat and back cushions, and convenient accessories, while at the same time enhancing the beauty of car interiors through the use of harmonious fittings and trim.

With chassis already embodying the most modern automotive features, such as the four-speed transmission, Bijur chassis lubrication system, positive feed fuel pump, crankcase ventilation, hydraulic internal brakes, crankshaft vibration balancer, and others, Graham-Paige was free to concentrate on improvements to promote beauty, comfort, and easy riding.

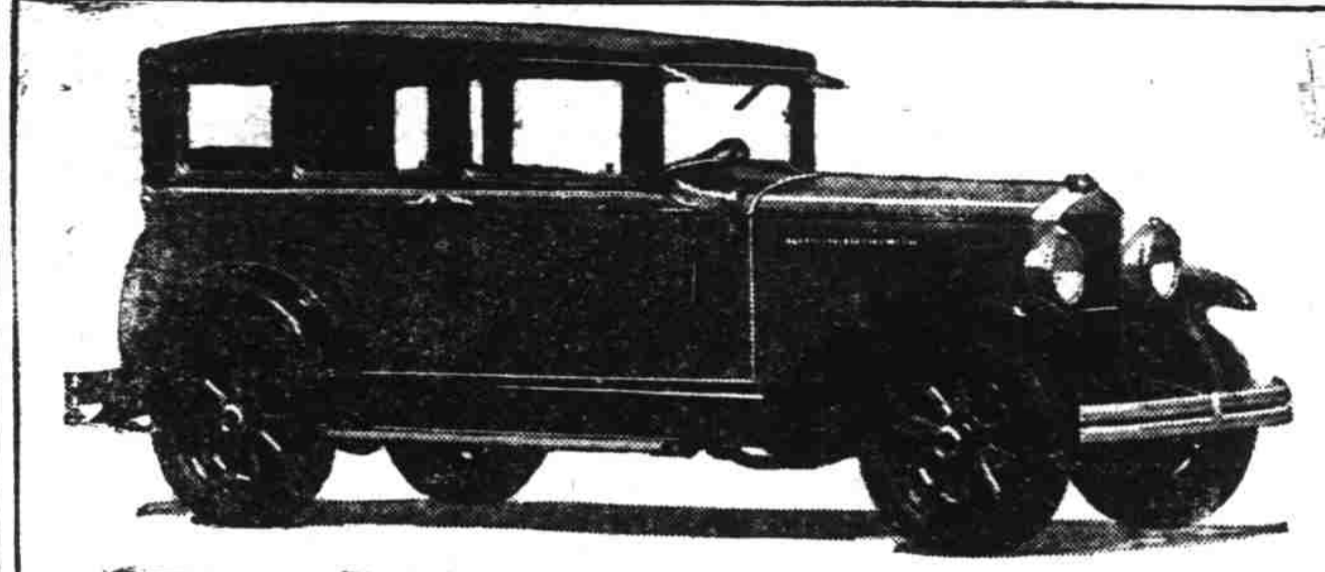
Police Policeman. BROCKTON, Mass.—(AP)—A policeman's uniform was a piece of "property" that just was not to be had in Brockton. But the ingenuity of a vaudeville actor and the willingness of a policeman saved the day for the former. The policeman accommodated the actor, spending his rest period in the dressing room while his uniform draped the actor's frame on the stage.

Mother May Chastise Her Offspring. A mother may chastise her offspring regardless of his age, an Illinois court ruled.

New Models Announced by Graham-Paige



GRAHAM-PAIGE Model 612



GRAHAM-PAIGE Model 615

RUSSIAN ATHEISTS SEEKING CONVERTS

MOSCOW—(AP)—After a hot debate the society of Militant Atheists, at a conference recently held in Moscow, lowered the age requirements for admissions to the society from 16 to 14 years.

Youngsters between 8 and 14 years of age will be enlisted as members of "groups of young atheists."

The conference elected a Central Council of Godless consisting of 95 members and 32 candidates, among whom were Anatole Lunacharsky, Commissar of Education; Nadejda Krupskaya, Lenin's widow and Emelian Yaroslavsky, secretary of the Communist Party Control Committee.

Closing the conference, Yaroslavsky said: "The central problem of our society is to mobilize as many millions as possible against religion."

ST. LOUIS—(AP)—Approximately 135 large corporations own airplanes for use by their salesmen, executives, and for other business services, a survey by an aircraft concern here shows.

BUSINESS 'HOPS OFF'

ST. LOUIS—(AP)—Approximately 135 large corporations own airplanes for use by their salesmen, executives, and for other business services, a survey by an aircraft concern here shows.

ATHENS MANSION IS DONATED TO NATION

ATHENS—(AP)—The heirs of the Greek millionaire Emmanuel Benakos have presented to the nation his mansion on the Kephissia road to serve as a national museum for the collections which it contains.

Among the treasures are a number of rare Rhodian vases of the 17th century; pictures that belonged to King Louis the First of Bavaria, father of Otto, the first king of Greece; a number of weapons used by heroes of the war of independence including two swords of Karamakos and the bonnet worn by Byron's "Maid of Athens."

The museum will be managed by a specially appointed committee, on which a member of the Benakos family will always be represented. The bequest is valued at \$324,000.

Investigate Our Recapping Service Before Buying Your New Tires

Firestone TIRES

Gasoline and Oils Storage, Washing and Greasing

J. W. PARKER TIRE CO.

264 N. High Street

Phone 114

JUDGE the HIGH QUALITY of Western Giant and Wearwell Tires

by Our Reputation and Resources

Not by Our LOWER PRICES

Then you will know why, despite our LOWER PRICES, hundreds of thousands of wise car owners unhesitatingly class our Western Giants with nationally advertised First Line Tires, and our Wearwells—also irrespective of the savings they offer—with nationally advertised secondary lines.

All good tires cost about the same to build... Only by using the finest materials and workmanship, are we able to have built into our tires all the Extra Mileage and Satisfaction motorists know from experience they can depend on receiving... only thus can we assure quality worthy of our enviable reputation...

So—the great difference between our tires and nationally advertised brands is in price. We sell well over half-a-million tires each year, through our own more than 150 conveniently located stores... We buy in huge volume, and save still more on economical distribution. These savings are passed on to you in lower prices, in accordance with our "One Low Profit Selling Price."

REMEMBER— IN QUALITY... class Western Giants with nationally advertised First Line Tires... and Wearwells with nationally advertised secondary line tires... then SAVE at our Lower Prices...!



Western Giant RIB-TREAD BALLOON to be compared with Nationally Advertised 1st Line TIRES - 29 x 4.40 - Guaranteed 15,000 Miles \$5.96

Tires Mounted FREE



Wearwell FULL BALLOON to be compared with Nationally Advertised Secondary Line TIRES - 29 x 4.40 - Guaranteed 10,000 Miles \$5.28

Tires Mounted FREE

A Tire for Every Car — for Every Use — for Every Purse.

Still Greater Value Offered by "Western Auto"

FREE Mounting of tires... TRADE-IN ALLOWANCE on your old tires... "150 Store Service"... Liberal definite Minimum Mileage Guarantee, backed by our Iron-Clad Guarantee of Satisfaction for the life of the tire... and our popular "Customer is Always Right" policy.

SIZE	Wearwell Balloon 10,000-Mile Guarantee	Western Giant Standard Rib-Tread 15,000-Mile Guarantee	Western Giant New Construction 16,000-Mile Guarantee
29x4.40 (4.40-21)	\$ 5.28	\$ 5.96	\$ 6.85
30x4.50 (4.50-21)	6.10	6.95	7.95
29x4.75 (4.75-20)	6.85	8.30	8.95
30x5.00 (5.00-20)	7.65	8.95	10.25
31x5.00 (5.00-21)	7.85	9.35	10.65
30x5.25 (5.25-20)	8.80	10.25	11.80
31x5.25 (5.25-21)	8.95	10.55	11.95
30x5.50 (fits 30x5.77) ..	10.45	12.65
32x6.00 (6.00-20)	11.80	13.75	15.60
33x6.00 (6.00-21)	11.95	13.95	15.95
32x6.50 (fits 32x6.20)	17.80
33x6.75 (6.75-21)	21.25

SIZE	Wearwell Card 10,000-Mile Guarantee	Western Giant Passenger Car Type 10,000-Mile Guarantee	Western Giant Extra Heavy Truck Type
30x3 1/2 Cl. Regular ..	\$4.65	\$ 5.35
30x3 1/2 Cl. Oversize ..	4.95	5.85	\$ 8.90
30x3 1/2 SS Oversize	6.95
31x4 SS Oversize ..	7.95	9.25
32x4 SS Oversize ..	8.25	9.85	13.85
33x4 SS Oversize ..	8.95	10.45
32x4 1/2 SS Oversize	13.65	17.90
33x4 1/2 SS Oversize	13.95	18.75
30x5 SS Oversize	21.85
33x5 SS Oversize	19.45	23.65

More than 150 Stores in the West - Western Auto Supply Co. Salem Store 201 N. Com'l. Telephone 796

"Western Auto" Service Saves You Money SERVICE connections maintained in all cities where we have stores, so goods purchased from us may be properly installed at a very low flat rate. In many instances free.

Our 1930 Cars

Throughout our business careers we have sincerely endeavored to make our products constantly better and to present them to the public without exaggeration.

Today... you can see the 1930 Sixes and Eights, the best looking, finest performing cars and the most substantial values we have ever offered.

Joseph B. Graham
Robert C. Graham
Ray A. Graham



See These 1930 Cars Today LODER BROS.

445 Center St., Salem

Phone 450

Graham-Paige Sales and Service for Marion and Polk Counties