

# STUDEBAKER IS LOWER IN PRICE

### New Model Sacrifices Nothing in Appearance or in Performance

A new Dictator Six with a longer wheelbase and a complete range of beautiful new body styles, yet selling at the lowest price ever placed on a Studebaker closed car, has been announced by the Studebaker Corporation of America.

"The new Dictator Six offers the brilliant performance characteristic of Studebaker engineering and the roomy comfort of liberally dimensioned bodies mounted on a chassis of 115-inch wheelbase. The six body models are offered at prices ranging from \$995 to \$1195," said Wallace Bonesteel, local Studebaker-Erskine dealer through whom the announcement was made.

"With its smart appearance, its exceptional riding and driving ease, and its brilliant, yet thrifty performance, the new Dictator Six is a notable addition to Studebaker's family of championship cars. In every respect it is worthy to assume the place of its predecessor, whose achievement in traveling 5000 miles in 4751 consecutive minutes has remained unchallenged as a standard of performance and stamina for stock cars priced below \$1300.

"Double drop frame construction and the long 115-inch wheelbase have made it possible for Studebaker body engineers to design a car of exceptionally graceful lines. Its low swing appearance is emphasized by sweeping fenders hung low over the wheels, and the skillful use of body moldings and smart new color schemes.

## TWO LARGE STAGE GROUPS COMBINED

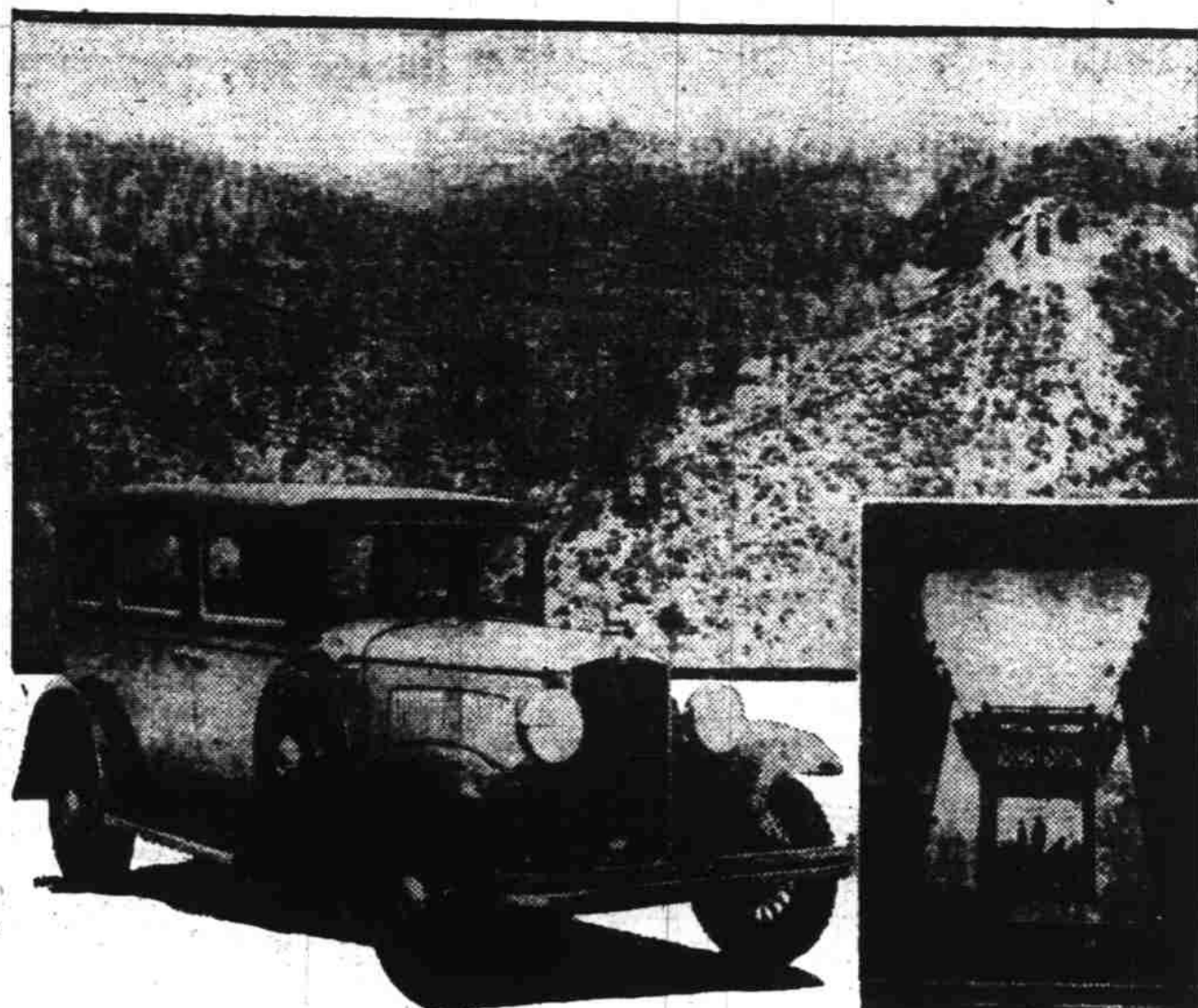
Traffic offices of the Pickwick Stages, Inc., Sierra Nevada Stages, Inc., Auto Transit company and California Transit company will be moved from Los Angeles and Oakland to San Francisco within the next few days and there consolidated with the general traffic offices of the Southern Pacific Motor transport company, it was stated in an announcement this week by T. B. Wilson, president of the Pacific Transportation Securities, Inc., and Charles W. Wren, chairman of the executive committee.

Centralization of the general traffic offices of the consolidated stage lines in San Francisco is one of the first developments brought about in the Pacific coast territory by the recent merger of Pickwick, Yelloway, Greyhound and Southern Pacific Motor Transport company lines.

### DEPUTY SENTENCED

LOS ANGELES, July 18 (AP)—Harold L. Davis, former chief deputy district attorney, today was sentenced by the superior court to San Quentin penitentiary for a term of from one to fourteen years for bribery.

## Bridging A Gap



A new electric railway across the American River in the Eldorado National Forest between Pino Grande and Camino, California, is said to be the largest of its kind in operation today. It spans three hundred feet of canyon and carriers transport loaded cars across the gap in one and a half minutes. Photos above show: The car in operation, above; a new Durant Six Sixty-Six sedan which carried newspapermen to the dedication ceremonies; and, inset, the car on its maiden trip.

## HOW'S THE ROAD?

Answers Framed in Weekly Report From Oregon State Highway Commission

Charm of Oregon's great outdoors is calling to the tourists of the state and the attraction of the highways and the byways of the state loom large. This week's report on the condition of the road is:

**Pacific Highway**  
Portland-Oswego-Oregon City-Salem-Albany-Harrisburg-Junction City-Eugene-Cottage Grove-Grants Pass-Medford-Ashland - California State Line: Paved.  
Paving operations under way between Canemah and New Era. South bound traffic routed over present highway. North bound traffic take detour from New Era to Oregon City.

**West Side Pacific Highway**  
Already blue skies and the Portland-Newberg-McMinnville-Corvallis-Junction City - Eugene: Paved.

**Columbia River Highway**  
Astoria-Rainier-St. Helens-Portland: Paved. Portland-Hood River-The Dalles: Paved. The Dalles-Arlington-Umatilla: Oiled macadam.

**Old Oregon Trail**  
Umatilla-Pendleton-La Grande-Baker-Huntington-Ontario: Oiled macadam.

Oiling operations under way between the Union county line and Baker, and between Pendleton and Meacham.

**Roosevelt Coast Highway**  
Clatsop, Tillamook and Lincoln Counties

Astoria-Seaside: Paved. Seaside-Mohler-Brighton - Lake Lytle - Rockaway - Garibaldi - Bay

at Gold Beach, 7 a. m. to 11 p. m. Coos Bay-Roseburg Highway Junction Pacific Highway-Myrtle Point-Coquille: Macadam.

**Green Springs Highway**  
Junction Pacific Highway-Keno-Klamath Falls: Macadam.

**Siskiyou Highway**  
Junction Pacific Highway-Cheshire-Goldson - Blachly - Rainrock - Mapleton: Macadam.

**Mapleton-Florence: Dirt road.** Impassable in wet weather. Oiling operations under way between Cheshire and Blachly.

**Corvallis-Newport Highway**  
Corvallis-Philomath - Eddyville - Toledo-Newport: Macadam. Resurfacing work under way on Klino Hill Section. Loose gravel, drive carefully.

**Tualatin Valley Highway**  
Portland-Hillsboro-Forest Grove-Carlton-McMinnville: Paved.

**Mt. Hood Highway**  
Portland - Government Camp-Hood River: Paved to Multnomah county line, balance oiled macadam.

**The Dalles-California Highway**  
The Dalles-Dufur-Maupin-Was-

co county line-Madras-Redmond-Bend-Lapine-Crescent-Fort Klamath-Klamath Falls: Oiled macadam.

**Klamath Falls-Merrill-California state line: Macadam.** Construction operations under way between Klamath Falls and Lakeview Junction.

**Oregon-Washington Highway**  
Pendleton-Washington State Line: Paved. Pendleton-Pilot-Rock-Heppner-Ione-Heppner Junction: Macadam.

**McMinnville-Tillamook Highway**  
McMinnville-Sheridan: Paved. Sheridan-Williamina-Grand Ronde-Hebo: Oiled macadam.

**Klamath Falls-Lakeview highway.** Klamath Falls-Bonanza: Macadam.

**Bonanza-Lorenz Mill: Newly graded market road.** In rough condition.

**Lorenz Mill-Beatty-Lakeview: Macadam.**

**Fremont Highway**  
Bend-Lapine: Oiled macadam. Lapine-Silver Lake-Summer Lake: Unimproved dirt road.

**Summeh Lake-Paisley: Nine miles, macadam, 18 miles fair dirt road.**

**Lakeview-New Pine Creek-California State Line—Partly macadamized, balance fair dirt road.**

**Central Oregon Highway**  
Bend-Burns: First 12 miles under construction, traffic detoured over Bend-Burns road, fair condition; 127 miles fair dirt road.

**Burns-Crane: Macadam.** Burns-Vale via Drewsey: Earth road, John Day Highway

**Arlington-Condon-Fossil-Spray-Dayville-Mt. Vernon-John Day-Prairie City-Austin-Uinity-Ironside-Cow Valley-Brogan-Jamieson Vale-Ontario: Macadam.**

**Redmond-Prineville-Mitchell: Macadam.**

**Mitchell-Antone-Dayville: Dirt road, fair condition.**

**Sherman Highway**  
Biggs-Wasco-Moro-Grass Valley-Kent-Shaniko-Junction The Dalles-California Highway: Macadam

Reconstruction operations between Moro and Grass Valley. Through travel advised to use The Dalles-California highway.

**Crater Lake Highway**  
Medford-Trail-Prospect - Union Creek-Port Klamath Junction: Oiled macadam. Road to Crater Lake now open to travel. Oiling operations under way between South Boundary Crater Lake Park and Fort Klamath Junction.

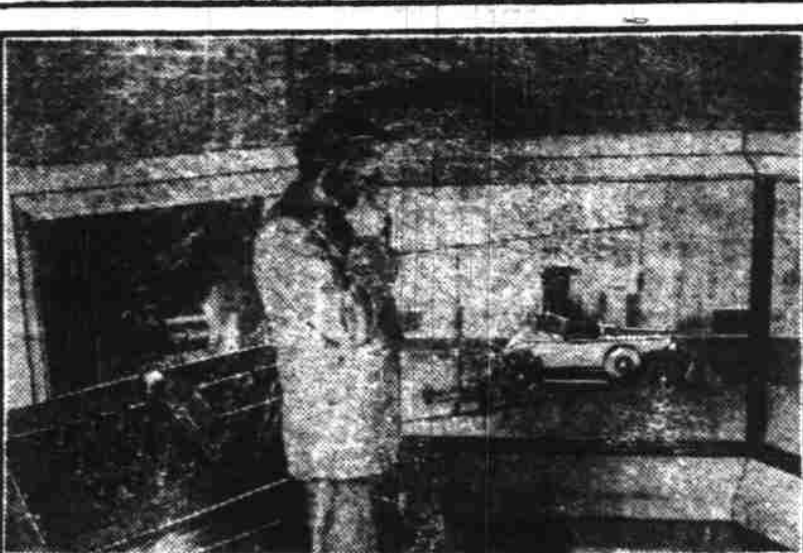
**La Grande-Wallowa Lake**  
La Grande-Island City: Paved. Island City-Elgin-Minam-Wallowa - Lostine - Enterprise - Joseph-Wallowa Lake: Macadam.

**Baker-Cornucopit Highway**  
Baker-Haltway: 30 miles macadam and 30 miles graded roadbed, good condition.

**REDWOOD HIGHWAY**  
Road to Oregon Caves

Grants Pass-Deer Creek-Kerby-California State Line: Macadam. From state line to Crescent City,

## Graham-Paige Too Quiet



The first automobile "voice-test" ever filmed, with a Graham-Paige as the subject, took place on the Paramount-Famous-Lasky soundstage at Hollywood. When the film was run, Nancy Carroll's lines were heard perfectly, the Graham-Paige engine being barely audible. The lower photograph shows Albert DeSart, Paramount sound-director, in the monitor room, listening to the purr of the motor under the microphone on the sound stage below. DeSart declared the "voice" of the Graham-Paige unsuitable for "talkies," being too subdued for recording unless a muffler cut-out were used.

**McKenzie Highway**  
McKenzie pass Is O K Baker-Unity Highway

**Baker-Unity: 25 miles macadam, 21 miles cushioned roadbed, Good condition.**

**Pendleton-John Day Highway**  
Pendleton-Pilot Rock - Lazinka Ranch: Macadam.

**Lazinka Ranch-Albee: Graded**

**43 miles macadam, 10 miles narrow roadway.** Oiling operations under way between Shattuck Corner and Selma.

**Kerby-Oregon Caves: 10 miles macadam, 9 miles dirt road.** Construction work under way on last 8 miles but traffic passes with only slight delays on work days; no delays on Sundays.

road open for travel.  
Albee-Ukiah: Surfaced.  
Ukiah-Ritter: Rough mountain road, steep grades.  
Ritter-Mt. Vernon: Partly graded and surfaced, fair condition.

**ENTERPRISE-FLORA**  
To Lewiston, Idaho  
Enterprise - Flora: Improved road to Paradise, remaining section rough country road to Astoria.

**Santiam Highway**  
Albany-Lebanon: Oiled macadam.  
Lebanon-Shea's Hill: Gravel road.  
Shea's Hill-Cascadia: Macadam, road impassable between Cascade and Ranger Station, 3 miles.

**Willamette Highway**  
Goshen-Lowell: Macadam.  
Lowell-Oakridge: Rough dirt passable.

**Albany-Corvallis Highway**  
Albany-Corvallis: Paved.  
Alsea Highway  
Junction Corvallis - Newport Highway-Alsea: Oiled macadam.  
Alsea-Tidewater-Waldport: Macadam.

All oiling operations so conducted that there is no splashing of cars.

**KING STILL BETTER**  
LONDON, July 18 (AP)—Announcement that King George had maintained his progress from the effects of the operation of Monday morning was made tonight.

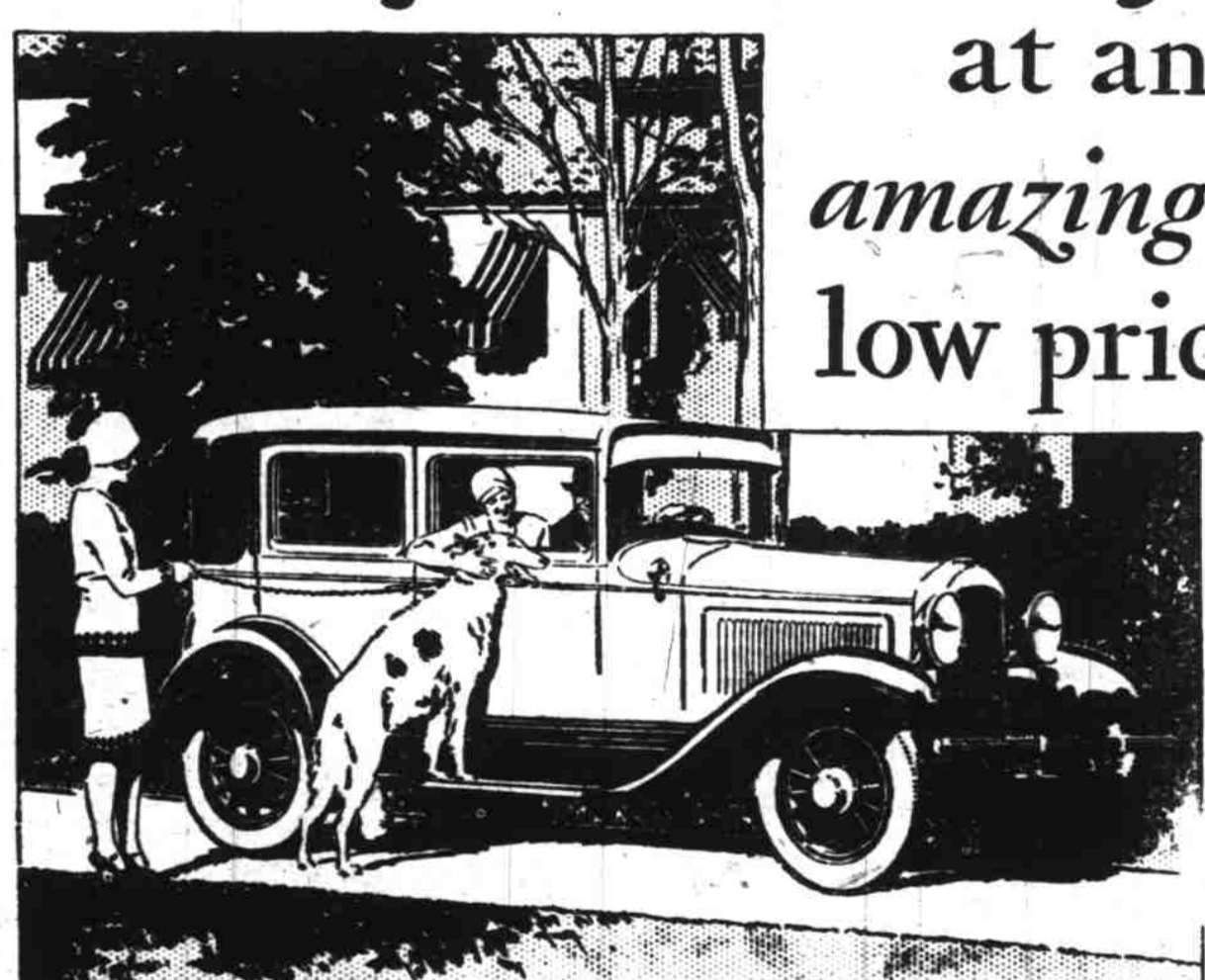
# Firestone TIRES

Storage, Washing, Greasing and Wheel Aligning

## J. W. PARKER TIRE CO.

264 N. High Street—Phone 114

# Costly car beauty at an amazingly low price



SMART DESIGN... MAKES WHIPPET THE STYLE LEADER IN ITS CLASS

**WHIPPET 6-CYLINDER SEDAN**  
Down payment only  
**\$333**

**WHIPPET 4 COACH**  
Down payment only  
**\$246**

NEVER before has an inexpensive car been distinguished by such stylish lines, rich colors and artistic finish as are now winning sweeping success for the new Superior Whippet. From an engineering standpoint, too, the new Superior Whippet is the most advanced car in its class. At a low price, Whippet offers many important features found in costly cars. Dependable performance and low operating costs make Whippet's upkeep a negligible factor in your budget.

**WILLYS-OVERLAND, INC., TOLEDO, OHIO**

**WHIPPET FOURS AND SIXES**  
**CAPITOL MOTORS, Inc**  
350 N. High St. Telephone 2125

starting today

# Our Annual JULY SALE

## of used cars sweeping price reductions

Motor car buyers—come to this great mid-summer sale of good used cars. You are sure to find a handsome, dependable model, exactly suited to your needs and priced far below your expectations. Our selection of popular makes is complete and includes many practically new cars with a written warranty. Our range of prices is wide enough to provide a good car for every purse. Vacationists—buy now and save enough to pay your expenses. Thrifty buyers—this sale offers you the season's biggest opportunity to save. Come in—see the astounding bargains offered—today!

**Super-Specials for Opening Day**

1928 Oakland Coupe. A smart beautiful car with Fisher body and Duco finish, luxurious, comfortable, big and powerful. Practically like a new car. "Good Will" reconditioned and selling at a very low price	Late 1928 Ford Coupe. New Duco finish. Has always had the best of care. Tires 90% new and in excellent mechanical condition
<b>\$850</b>	<b>\$290</b>
1928 Pontiac Cabriolet. Very late model. Thoroughly "Good Will" reconditioned. Fully equipped, tires 80% new. The best value in months for only	G. M. A. C. Time Payment Plan—Small Down Payment—Lowest Finance Charges.
<b>\$675</b>	
1928 Pontiac Panel Delivery. Almost a new car. Only driven a few miles. Fully equipped. Remarkable value at	
<b>\$675</b>	

**BIG SPECIALS "Good Will" Guaranteed USED CARS**

**Late 1927 Pontiac Sedan**  
One of the most popular Pontiacs ever built. DeLux equipment throughout. Beautiful Duco color combination. Special price, only **\$625**

**Early 1927 Pontiac Sedan.** Beautiful Fisher Body, Duco finish. Powerful Pontiac Motor. Completely equipped. The city's greatest value, at **\$550**

**1927 Pontiac Cabriolet.** This chummy four passenger will sell fast. Good shape throughout. Tires 85% new. Rumble seat. Going at **\$595**

**1928 Pontiac 4 Door Sedan.** Complete equipment, Blue Duco finish and upholstery to match. Perfect mechanically after "Good Will" reconditioning and a beautiful car at an exceptionally low price. Only **\$750**

**VICK BROTHERS** High Street at Trade Telephone 1841

**GOOD WILL USED CARS**

## HINTS for your SUNDAY DRIVE

We Suggest A Trip To Cascadia

This is a beautiful spot—ideal camp ground, a place to eat—chicken dinner served every Sunday, and a dance hall with dances every Saturday night, and it is only 70 miles from Salem. Go 26 miles to Albany, then east 14.7 miles to Lebanon and on 31 miles to Cascadia—and don't forget to try the famous Cascadia mineral water. You can return by way of Brownsville and Halsey if you wish.

**BEFORE YOU GO PUT ON A SET OF NEW MILLER TIRES**

GEARED TO THE ROAD

Your trip will not be marred by tire trouble if you have Miller's on your car.

**FREE ROAD SERVICE ANYWHERE IN SALEM PHONE 313**

**Miller Tire Service Co.**  
"RUSS" SMITH  
197 So. Commercial Street—PHONE 313