

PLANES REDUCE INTEREST COST

Flight Covering 44 County Seats is Exploit of Unusual Value

LOS ANGELES, July 16—Every reader of popular fiction knows the good old substantial "plot" of the race to file the "papers." It has been utilized by authors of a thousand thrillers. The hero is about to be defrauded of his little ranch because there lies a legal clause that the mortgage must be lifted at the county seat by a certain hour. The villain, of course, seeks to stop the filing. But the hero—always horseback—gallops through death traps, through burned bridges, past gangs of waylayers, etc., and draws rein just in time to prevent the foreclosure.

This fictitious trick of the writers had a recent real counterpart in modern business life in California when the Richfield Oil airplanes and four high-powered company utilized three speedy motor cars to file the "papers" within a single day in 44 different county seats.

The hero in this case was the Richfield company; the planes and cars were the trusted steeds; the villain was Father Time. For, had ordinary mail transportation been used to file counterparts of a bond indenture covering a \$25,000,000 6-per cent issue, the delay would have cost approximately \$40,000 in interest charges.

Hard Battle Won
As it was, with planes and cars rushing the papers over the state as soon as they were received from the printers at 4 o'clock in the morning, by 8:15 o'clock that same night, telegraphic advice from the last of the 44 counties was in the hands of President C. M. Fuller at Los Angeles, showing that the monumental time battle had been accomplished—scheming old Father Time was thwarted.

The curtain dropped on a happy ending of a 1929 model transportation drama. Making the event even more dramatic and colorful was the fact that, on some of the plane routes, airports were not available near county seats. There the papers, enclosed in aluminum tubes, were dropped by parachute at points arranged for by long-distance telephone.

None other than Richfield regular employees, and nothing but Richfield owned and operated equipment, was used.

"This has proved, more than value of company-owned airplanes any other previous thing, the high for corporation use," was the comment of President Fuller of Richfield.

TEX RANKIN NAMED ON U. S. AIR BOARD

Frederick B. Rentschler, president of the Aeronautical chamber of commerce of America, this week announced the selection of seven members of a committee of nine pilots who will study flying school problems on behalf of the aircraft industry.

The seven men named on the new committee are: Tex Rankin, Portland, Ore.; C. S. "Casey" Jones, New York City; John Bowers, Los Angeles, Cal.; Cloyd Cleveland, Tulsa, Okla.; W. D. Haviland, St. Louis, Mo.; Oliver L. Parks, St. Louis, Mo.; and Chan C. Mason, Buffalo, N. Y. Two vacancies on the committee will be filled later, Mr. Rentschler said.

The committee will meet in Cleveland August 29, during the National Air Races and Aeronautical exposition, to elect a chairman and formulate a program of investigation on flying school problems. The committee will work with the department of commerce, which is rating all flying schools under provisions of an amendment to the air commerce act.

GILDA GRAY LIKES NEW VIKING EIGHT

Gilda Gray, who has won fame and fortune with her many dance variations, expresses keen admiration for the quiet, smoothness of the new Viking, 90 degree, V-type eight cylinder automobile.

"It's a real thrill to drive the new Viking," says Gilda. "After a strenuous performance it is a treat to take the wheel of a car that is so restful to drive. Not an effort is required—something which any car owner can appreciate."

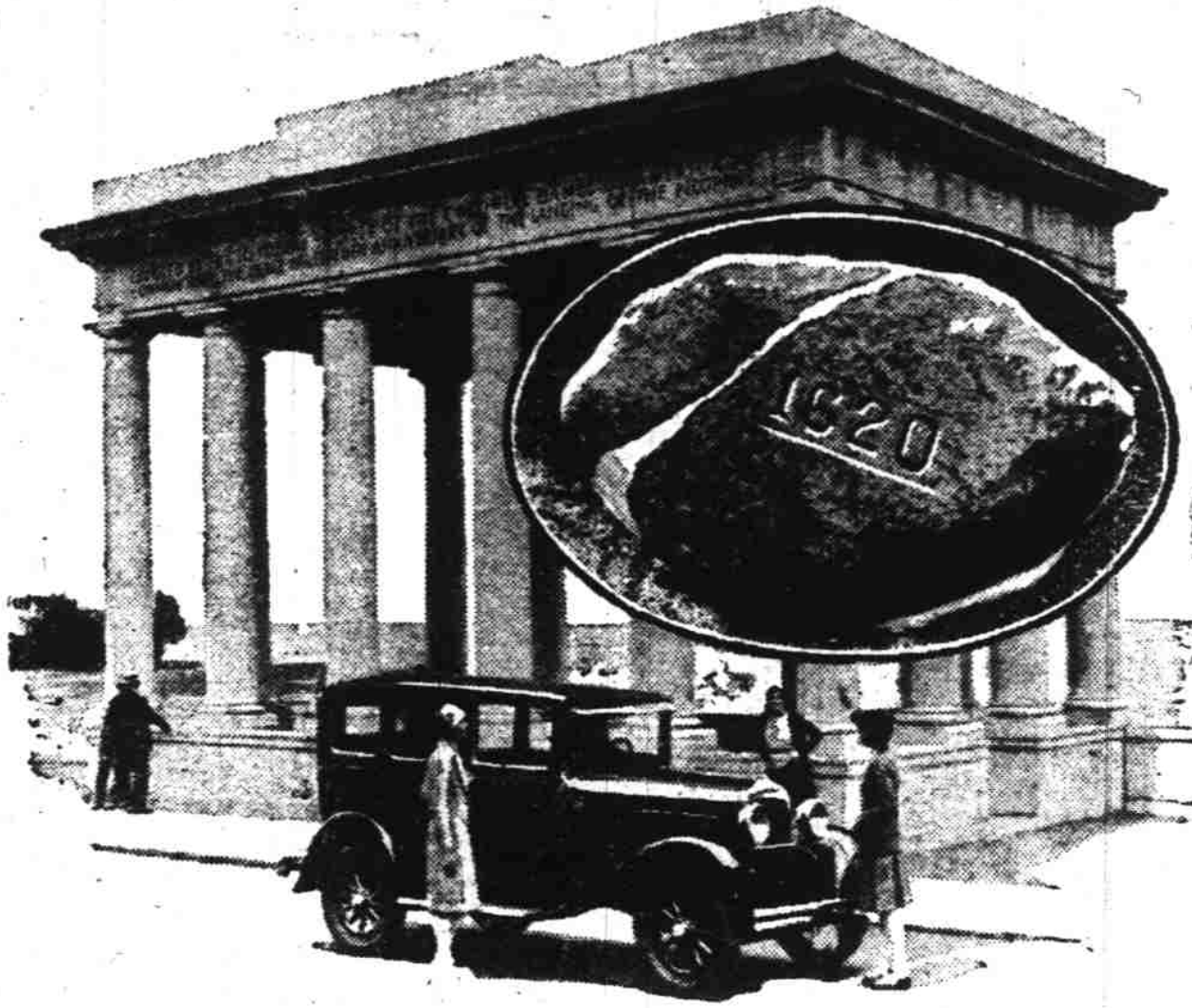
Many factors enter into making the Viking a smooth, quiet and easily handled car, according to the Oldsmobile-Viking engineers who designed this new General Motors product.

The new 90 degree V-type eight cylinder engine contributes materially to smoothness and quietness. There is a power stroke at each quarter-turn of the crankshaft, making a constant overlapping flow of power and smoothness of operation. The short crankshaft used in the V-type engine reduces the possibility of vibration to a minimum, owing to its shortness and heavy construction as well as perfect balance.

GAME LAWS SUMMARIZED

A summary of the laws which apply to hunting is being compiled by the state game commission and in a short time will be ready for distribution through county clerks and sub-agencies handling the sale of licenses.

Plymouth Rock Tourists' Mecca



Plymouth Rock, Plymouth, Massachusetts, the landing place of the Pilgrim fathers, is a patriotic mecca for thousands of tourists. The famed rock (shown in insert) is now protected from the elements by a classic memorial structure. Photo shows a Plymouth sedan at this monument to the New England pioneers, for whose first settlement the car was named. Plymouth dealers throughout the country are celebrating the first anniversary of the Plymouth car, June 29th to July 18 inclusive, coincident with the Nation's birthday celebration.

Language Of Love Is Real Thing

CHICAGO (AP)—Courtship is highly involved among the trilingual Caribs in British Honduras, and love has a special tongue, reports J. Eric Thompson, art the Field Museum staff, recently returned from Honduras.

"Carib men have one language which they speak to one another," says Thompson. "Carib women have a second for conversation among themselves. And there is a third tongue used in conversation between the sexes. The distinction is basic, not merely the difference between words white men sometimes use in the smoking room as compared to those used before ladies."

Thus the smitten Carib must know two languages if he means to woo, and a third if he would hear what his girl tells her mother about him.

GRAHAM PAIGE HAS RECORD PRODUCTION

Graham Paige set a new quarterly production record in the three months ending June 30, and also completed the first six months of 1929 with a total exceeding any previous half year. In addition, the overseas and Canadian shipments for six months not only set new records, but even exceeded the totals for all twelve months of last year.

The second quarter's total production was 29,214 cars, surpassing the previous high record of 26,741, made in the third quarter of last year.

For the first half of 1929, the production total is 54,495 cars, a gain of 15,759, more than 40 per cent, over the first six months of last year. Monthly production thus has averaged over 9000 cars, the 50,000th 1929 model was built June 7.

Detroit Boys Know Their Cars



A new game is sweeping the Motor City. Boys of a neighborhood each select one make of car to count as it passes in traffic, and record that car on a chart. Here they are pointing out distinctive features of the New Dodge Brothers Six, and the Dodge boy is marking up another one. The boy with the fewest cars to his credit after an hour is at the mercy of the mob. Insert shows the Dodge radiator emblem by which the youngsters so readily recognize the cars of this make.

DOCTOR LAMENTS HE CANNOT TAKE VIEWS

Doe and Two Fawns Seen on Road Near Molalla Enlist Ejaculations

"If I had only possessed a camera!" Such was the lament of a famous doctor who made a trip into the Molalla river country last week while attending the meeting of the American Medical association and had the thrill of seeing deer in the open.

"My host and I were driving along a mountain road when three deer walked out not 20 yards in advance of the car," said the doctor. "There were a doe and two small fawns. The little ones seemed unconcerned and were in no hurry to make a departure to safe territory. Not so with the mother, however; she faced the car, jumped up in the air several times and at last convinced the youngsters that the brush was the place for them. She waited until they had leaped out of sight, and then—two bounds and she was gone. I would enjoy having pictures of that scene to convince some easterners that all deer are not confined to parks and zoos."

JAMESTOWN RIVALS MAYFLOWER CLAIMS

JAMESTOWN ISLAND, Va. (AP)—The whereabouts of the "first permanent English settlement in America" is proving a puzzle to some astounded tourists who have visited this historic island.

Letters have been written to Virginia authorities and to newspapers expressing disappointment that no flourishing village and no descendants of Capt. John Smith are to be found here on the wave-washed banks of the James river.

Why is Jamestown known as the first permanent English settlement in America, if it wasn't permanent? the tourists ask.

The answer is that the colony was permanent even though Jamestown was abandoned and descendants of the early band still live in the Old Dominion. In fact the descendants appear to be as numerous as descendants of those immortals who found passage on that giant ocean liner of colonial days, the Mayflower, that sailed from European shores to Plymouth Rock some years later.

WRITER PASSES
LOS ANGELES, July 18 (AP)—Lillian Bell, 62, writer of short stories and author of several books, died suddenly here today.

Warning is Given Against Making "Suicide Turn"

The harsh title of "taking the suicide cut," has been given to the practice of driving around the left side of a street car, according to reports to the public safety department of the Oregon State Motor association. Not only has this practice become notorious for its danger, but it is also in violation of the Oregon vehicle act, it is pointed out.

The short gain in time that might be effected by the "suicide cut" is often lost in court or hospital, and at best a half minute added speed has no material effect upon driving time. Motorists are advised, upon the basis of many tragic records filed with the Oregon State Motor association on own traffic lanes. Safe driving public safety, to keep in their and the quickest possible time for reaching your destination with the least hazard will result from so doing.

HUDSON PLANT HAS ITS BEST MONTHS

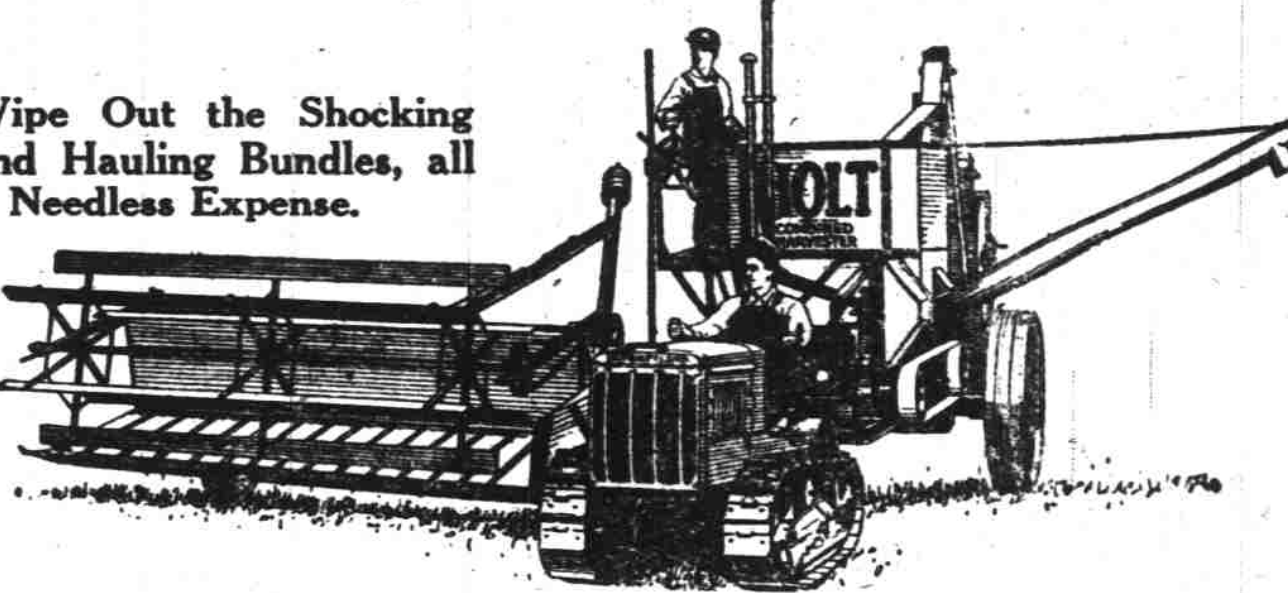
Harold Clifford, state game warden, was engaged for several days last week in making a survey of fishing conditions on the Clackamas river.

Hudson and Essex cars produced and shipped. June figures were 31,737. In the six months period of 1928 shipments were 183,047, the 1929 figures thus showing a 24.2 per cent gain. Every individual month of the six was a record-breaker. It is announced. While the peak of sales activity undoubtedly passed with the spring months, sales and business reports to Hudson officials are of active and prosperous conditions. It is staged. Stocks of cars with distributors and dealers are reported as well below the normal supply of a month's sales.

Harold Clifford, state game warden, was engaged for several days last week in making a survey of fishing conditions on the Clackamas river.

Do Away With Costly Binder Twine

Wipe Out the Shocking and Hauling Bundles, all a Needless Expense.



REDUCE THRESHING CREWS TO TWO OR THREE INSTEAD OF TWENTY

REDUCE WASTE LOSS TO 1 TO 1 1/2 PER CENT

WITH A HOLT COMBINE

For over 40 years HOLT COMBINED HARVESTERS have been reducing harvesting costs. The HOLT has been constantly improved, year after year since 1886—saves grain—separates clean—puts extra bushels in the bins.

With these savings you could soon pay for a Combine

You are invited to inspect this equipment at our Portland or Salem Sales-rooms, also McMinnville, Oregon, and Albany, Oregon.

Loggers & Contractors Machinery Company

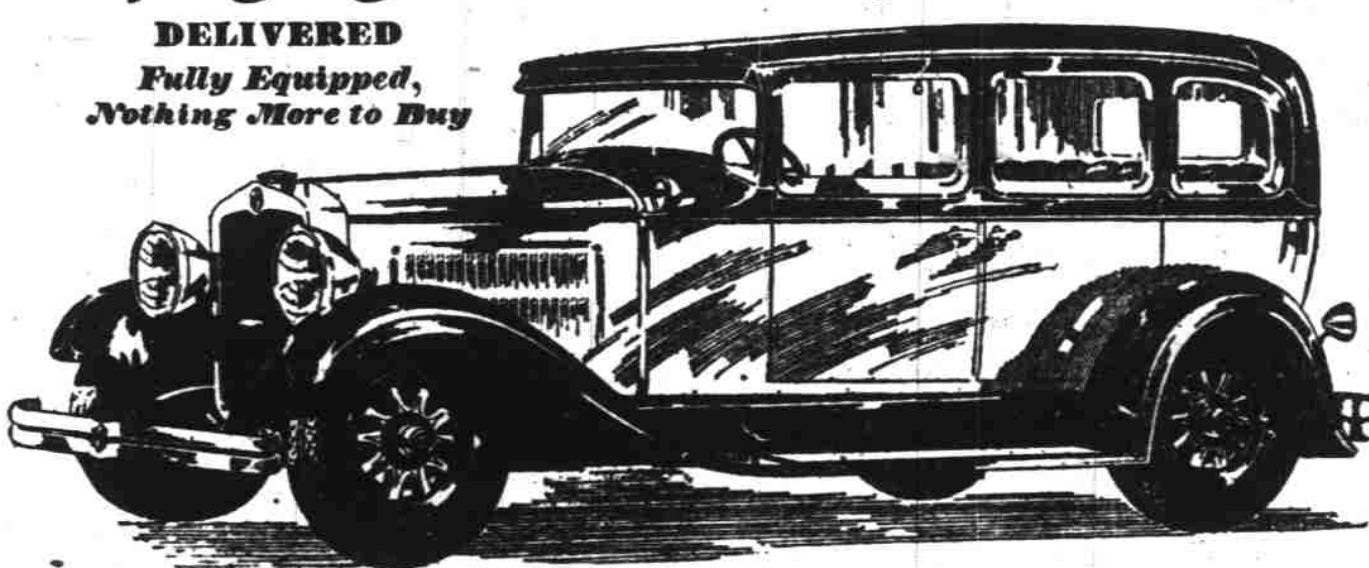
Portland 345 East Madison
Salem 345 Center
Distributors "Caterpillar" TRACTORS "HOLT" Combined Harvesters

NASH '400'

LEADS THE WORLD IN MOTOR CAR VALUE

"400" Special Six 4-Door Sedan

\$1585
DELIVERED
Fully Equipped,
Nothing More to Buy



Delivered, Fully Equipped Prices of 23 Nash "400" Models, \$1085 - \$2265 including Touring, Roadster, Coupe, Cabriolet, Victoria and Sedan Models

VALUE FAR AHEAD OF ITS PRICE FIELD

FIX firmly in your mind the delivered, fully equipped price of this Nash "400" Special Six Sedan.

IMPORTANT "400" FEATURES

- Twin-ignition motor
- 12 Aircraft-type spark plugs
- High compression
- Hondaille and Lovejoy shock absorbers (exclusive Nash mounting)
- Salon Bodies
- Bornalite aluminum alloy pistons (Inner Strain)
- Double-drop frame
- Torsional vibration damper
- World's easiest steering

Then see the car and, by all means, drive it. Nash never has offered a greater value. No one ever has produced finer performance in its price field.

This very moderately priced motor car has the Twin-ignition motor—the year's outstanding development in power—more power, more speed, less gasoline.

It has Bijur Centralized Chassis Lubrication—a feature of value and convenience highly esteemed by those who drive very costly motor cars.

extra cost, with Lovejoy hydraulic shock absorbers, chromium nicked bumpers, front and rear, spare tire lock and tire cover. The price quoted above also includes a spare tire and all freight and handling charges. There is nothing additional to pay for the customary "extras."

And the Special Six Sedan has the style and manner so important to the fullest enjoyment of your motoring. Good taste and artistry of design are apparent in the purity and grace of every line and contour.

Remember the price. Remember that it is a fully equipped, delivered price. And don't fail to see this sedan, before you buy. On display today at all Nash dealers.

IMPORTANT "400" FEATURES

- 7-bearing crankshaft (bottom crank pin)
- Bijur centralized chassis lubrication
- Electric clocks
- Exterior metalware chrome plated over nickel
- Short turning radius
- Long wheelbases
- One-piece Salon fenders
- Clear vision front pillar posts
- Nash Special Design front and rear bumpers

U.S. makes Dollars SMALLER PLYMOUTH makes them LARGER



THE ROADSTER (with rumble seat), \$675. Special equipment extra.

\$655⁰⁰
and upwards
f. o. b. factory

PLYMOUTH
AMERICA'S LOWEST-PRICED FULL-SIZE CAR

IN WASHINGTON, the government presses are turning out smaller dollar bills. In Detroit, the huge Plymouth plant, largest of its kind in the world, is turning out a motor car that makes the dollar bigger in purchasing power than it ever was.

Not in all automobile history has another such value appeared in the low-priced field.

There has never been another low-priced car to compare with the improved Plymouth in full-size roominess—in Chrysler-designed stylishness—in Chrysler-like briskness and smoothness—in ruggedness of construction—in safety—in all-around quality and ability.

Big body, big engine, big chassis, big axles, big 4-75 tires, big internal-expanding 4-wheel hydraulic brakes—in every respect, Plymouth is the biggest thing in its class. Compare—you'll be astonished how big in value Plymouth has made the dollar.

Coupe, \$655; Roadster (with rumble seat), \$675; 4-Door Sedan, \$675; 5-Door Sedan, \$695; De Luxe Coupe (with rumble seat), \$695; 4-Door Sedan, \$695. All prices f. o. b. factory. Plymouth dealers extend the convenience of time payments.

DEALERS:
Fitzgerald Sherwin Motor Co., Bonesteel Motor Co.,
Chemeketa and Liberty 474 S. Commercial
Telephone 1132 Telephone 423

F. W. PETTYJOHN CO.

365 North Commercial Street Telephone 1260
"AFTER WE SELL—WE SERVE"