

PAINTING JOB EXCELLENT ONE

E. J. Reasor, Who Has Had 27 Years Experience, Swings Brush

A wonderful fine bit of painting skill is displayed in the work done by E. J. Reasor on the Ben Lomond Park home. Mr. Reasor, who as he expresses it has "hung onto the handle of a brush for 27 years," was chosen for this task for numerous reasons; D. L. Bond, builder, puts chief among these his many years of experience which have fully equipped him for and made him capable of carrying out the intricate color scheme used in the interior of the house. For example, the second floor demands nine colors, each bedroom and the hall being finished in different shades, which are here harmonized beautifully. Mr. Reasor by mixing the paints himself has acquired the exact shades desired by the builder. Smooth enamel finish on kitchen built-ins and woodwork in kitchen, dining room, bedrooms, and bathroom are the combined results of fine painting and fine art.

Paint Super Satin Smooth
From the satin-smooth results and clear colors shown in the Ben Lomond Park home the beauty of the Monarch paint purchased from Doughton & Sherwin may easily be seen, but time alone tells the tale of this exceedingly unusual paint. Its absolute purity makes possible greater coverage and a finish many times more lasting than that of the average paint. Because of these many fine qualities Mr. Reasor selected this established line of nationally famous paints.

Where linoleum has not been used the floors are stained a golden brown, shellacked, and waxed with materials produced by the manufacturers of Monarch paints. The Martin-Senour company, whose line of paints, stains and varnishes is carried in Salem exclusively by Doughton & Sherwin. Mr. Reasor, who has done all of the interior painting and staining, is equipped to do all kinds of interior decorating, including paperhanging, wall tinting and finishing.

BARONY CONFERRED

LONDON, June 22.—(AP)—A barony of the United Kingdom was conferred by his majesty today on Sir John Sankey, former lord justice of appeal and now lord chancellor in the labor administration. He will have the title of Baron Sankey and Moreton, in the county of Gloucestershire. He will thus be enabled to sit in the house of lords, being without a seat in parliament.

Curtain Making No Longer Haphazard Affair; Art Is Employed to Create Drapes

Not a matter of history but of mere memory is the time when mother bought a bolt of barred muslin, pulled out the sewing machine, an dwent to work making up a supply of curtains just as she made up a supply of sheets. Today curtains and drapes are an important part of the interior of any home, and as such are listed among those things which should be cared for by experts.

That the results of this new attitude toward curtains and draperies are more than satisfactory may be seen by a tour of inspection through the finished and furnished interior of the Ben Lomond Park Home.

Here Homer Leisy, head of the drapery department of the Imperial Furniture company, has displayed great skill in the blending of colors and selection of fabrics. **Rosy Red Shade Used**
In the cream and mahogany living room where a rosy shade of red is used in rug and upholstered furniture Scraton lustre lace curtains in spider weave with over draperies of rich crimson lustre velour lined with ecru satin are hung on wrought iron rods whose end ornament conforms with the design woven into the corner of the curtains.

French - marquisette with a fringed base is used in the dining room. Here the draperies are of imported French-block cretonne, which Mr. Leisy now buys direct from the mills in France, eliminating the middleman, thus not only insuring the genuineness of the material but saving the customer money as well. The curtains at the upper landing window conform with those in the dining room.

The kitchen is bright and cheerful with curtains of orchid and green swiss carrying in embroidery the design which is used in the tile.

House Dressed in Its Best
In fact, the entire house is curtained and dressed in its everyday best for its opening to the public today. Even the little octagon window upstairs has a specially planned sheer curtain mounted on a frame.

Mr. Leisy has had very thorough training and ranks as one of the leading decorators on the coast. He has been doing drapery work since 1914 when he started it as a means of working his way through college, and has been affiliated with some very large drapery departments. Since coming to Salem Mr. Leisy has acquired a large following not only in this city but in other towns of the valley as well. He was recently selected to drape the two fine new Potter residences in Eugene where he is well-known. **Fills Orders on Big Scale**
He has filled orders as far south as Oakland, Calif., and as far east as Wichita, Kansas, during

his connection with the Imperial Furniture company in Salem. Because he does know what is worth-while in the line of draperies Mr. Leisy is able to purchase direct from the mills both here and abroad thus saving considerable expense and adding one more fact to an already over-long list of reasons why mother's bolt of barred muslin and sewing machine are out of date as far as curtaining the modern home is concerned.

HARRY BOLAND HAS HILL SLOPE USED

A true type English house, designed and built to conform to the contour of the hillside is the Ben Lomond Park Home. It was designed by Harry B. Boland, of the Universal Plan service, Portland.

A beautiful and popular combination of shakes, brick, and stucco has been used forming a color scheme of dull dark green, cream, and brick red, which is most suitable to this architectural design.

Mr. Boland and his firm not only draw individual plans but carry a very complete line of stock plans for homes and business buildings, and are responsible for the designs of a great many new homes in Portland and Salem. By specializing in residence plans they have been able to design some of the most individual and beautiful residences on the Pacific coast.

MODEL AIRPLANE IS ALOFT 8 MINUTES

DETROIT, June 22.—(AP)—Joseph Culver, 18, of Oakland, Calif., today was holder of the world record, for indoor sustained flight of a model airplane. His monoplane remained in the air eight minutes 33 seconds in the indoor tournament of the airplane model league of America her today.

The previous record was five minutes 53.6 seconds. Donald C. Burnham, 14, of West Lafayette, Ind., attained a new world's record for outdoor flight yesterday at Selfridge field when his smodel remained in the air 10 1/2 minutes.

Winners of the indoor and outdoor meets will go to Europe to participate in the international tournament as a prize award. Final flights will be made tomorrow.

Rugs, Floor Must Agree



Rugs and Floors Should be In Harmony in Every Home

Did you ever realize that your rug? If not, consider the rug and your floors should fortunate things which might happen if they were to dislike each other, for propinquity and lack of congeniality are most dangerous.

Informal Color
So, in order to avoid such a catastrophe, see to it that your rug and your floor are suited to each other. For instance, if you have picked up some Oriental rugs, say the rich-toned Kashans or Kermanshahs, you will want a rich background, one which will show off their beauty. For this purpose, what could be more delightful than a brown-stained floor varnished over with a flat varnish which imparts a dull richness in keeping with the rug?

The domestic rug, such as a Wilton or Axminster, may rest on a varnished floor which is either dull or shiny. Less formal rugs require less formal backgrounds. The linen rug which are woven in heather mixtures, hooked rugs, woven or braided rag, tape carpeting, and the gay fiber rugs call for a background of paint, enamel or lacquer in tones which will contrast with them. For instance, a linen rug in tones of grey and green will blend in beautifully with a medium-green painted floor. Brilliant hooked rugs on a shiny black lacquer floor are effective. Do you know of the fiber rugs which are woven in fancy squares or circles and in such combinations as

orange and black or red and cream? They look well against black, too, or you may prefer a gay floor of a brighter hue. In bedrooms, where rag rugs may take their place, milder-toned floors are the rule. Green, blue and tan are more often to be found there, for they blend into the rug and make a harmonious foundation on which to base a feeling of comfort and peace.

INDIAN ROADS FIGHT BUSES

Railways of India are making strenuous efforts to meet the growing competition of motor bus lines. Rail passenger travel is dropping off and earnings are declining. Some railways are improving their services and reducing fares, but these have not given all the results desired. One line has started rail motor service, and a number have inaugurated bus lines as feeders. One road, which has lines paralleling the highway has added 52 passenger trains and 48 short-distance shuttle trains. In spite of this the number of passengers carried last year decreased by 900,000, as compared with 1927. Passenger earnings, however, were maintained, as the average distance traveled by passengers showed an increase.

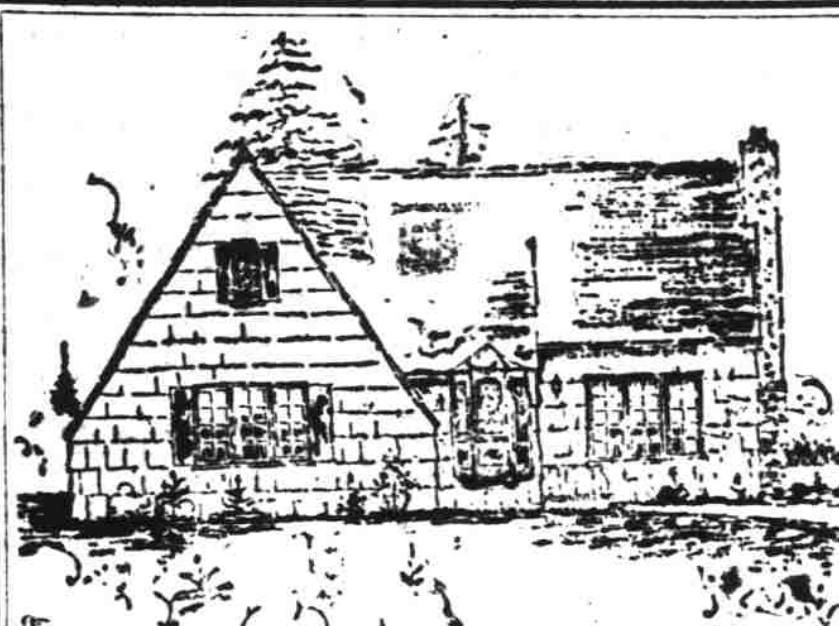
SPECIAL FAUCETS USED IN STRUCTURE

Crane Fixtures Add Right Touch to Every Phase of Interior Work

Chromium plated Crane faucets and fixtures have been used for the modern, sanitary, and practical plumbing in the Ben Lomond Park Home.

Of course, the bathroom like all modern bathrooms contains shower and white water-proof curtains. An all-metal medicine cabinet has also been installed here by J. H. Vicary, who did the plumbing for the house.

Installs Much Work
Mr. Vicary in his 16 months in Salem has installed the plumbing in many of the city's new homes, as well as doing considerable repair work. The time-honored story about the plumber can never apply to this modern young man who has so completely equipped a truck for repair work that not even a very unusual bit of work can send him home after his tools.



Universal Plan Service

332 Railway Exchange Building
Portland, Oregon

Stock Plans
Plans Drawn to Order

Universal Plans Mean Lower Cost
Dependable Service, Satisfied Clients

H. B. Boland

Phones: Office Broadway 5202; Res. SELLwood 4932

Tile Drain Boards
Bath Floors

Sun Rooms
Bath Walls

Williard Tile Co.

1566 N. 4th, Phone 1352M

Too see a tile kitchen is to covet it.

To own one is to appreciate its neatness and efficiency.

BEAUTIFUL TILES FOR EVERY NEED



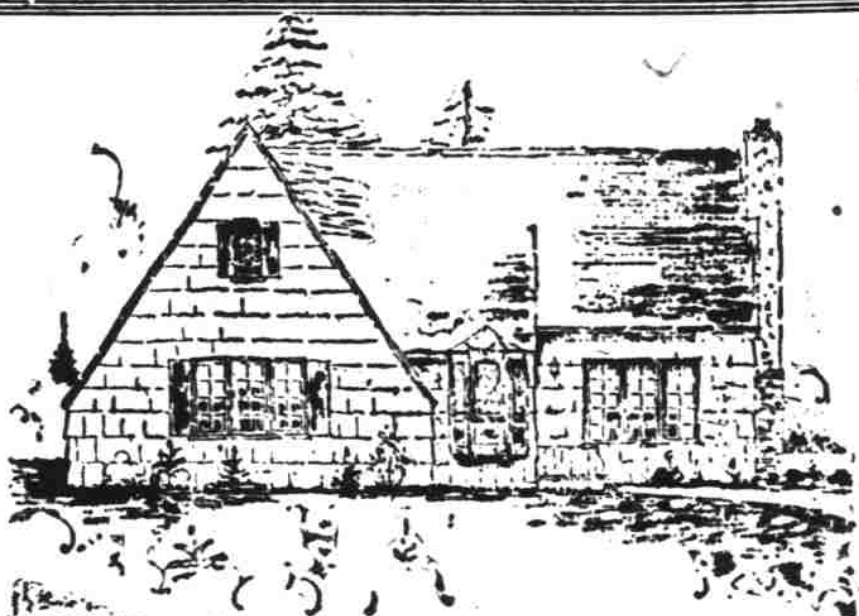
HOMER LEISY
Manager and Owner
of the Imperial Furniture Co's
Drapery Department.

WE furnish the draperies, shades, rods, and hangings in this model home. Call 1142 and let our decorator call with samples and estimate your new hangings. We are equipped to give you the proper fabrics, made up in the latest styles, at very moderate prices. Our workroom force is very efficient and will make your curtains at a nominal cost, or we will cut your curtains without cost if you wish to make them. You will always find Better Values at—

HOMER LEISY

FOR BETTER VALUES
Draperies - Shades - Awnings

467 Court St. Phone 1142
SALEM OREGON

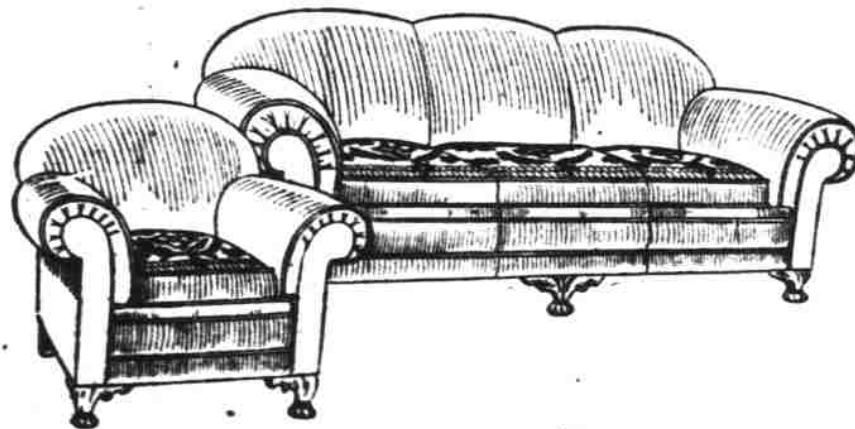


FURNITURE for Homes of Every Type

JUST as each house in this community embodies in its architecture the lines associated with some period in some nation's history—

Similarly does each piece of furniture trace its origin to the skill of some draftsman belonging to the same period of the same nation.

Each home in this community can find appropriate furniture here.

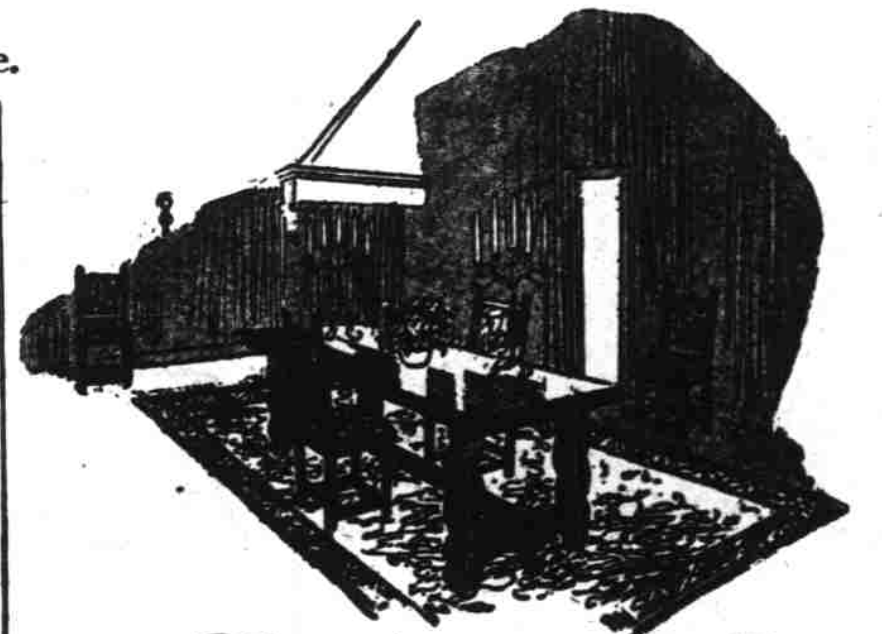


"Tailordrite" Upholstered Furniture

All selected hardwood frames. Best of material used throughout. Built by skilled workmen. Nationally advertised. "Nachman" Springs used throughout. Largest selection of covers. Artistically designed. Of lasting quality. "All that the name implies." On display at our store and in our model home

We Strive to be Always Alert to all that is New and Good

Terms Arranged



The Servian Rug

in a myriad of rich and colorful designs

BACKED by a century old tradition of fine craftsmanship, Bigelow-Hartford Servian Rugs have every quality of style that the home-maker would wish for. They combine luscious softness of weave with durability of texture.

See these in our Model Home Ben Lomond Park

Open Your Account With Us

Imperial Furniture Co. Inc.
467 Curt Street A Quality Store Tel. 1142

Guaranteed Values