

Good Taste Amply Expressed in Furnishing of New Home

Good Furnishings Demand Much Care and Money is Not So All Important

Good looking homes are dependent for their beauty upon the thought put into them. Costly rooms with elaborate and over-ornate furniture frequently show less taste than tiny cottage rooms, in which harmony is the keynote. It is an asset for the housewife to start planning her home, before she has a stick of furniture to put into it. Then she will not have rooms of which she is ashamed—on which the door is closed to guests.

Most important of all is the background. If a limited amount of money is available for decoration and for furniture, the first thought should be put on the background. The main pieces for the foreground can come later. The finish of the floors and ceilings, walls and woodwork must be suitable and harmonious. Once these things are satisfactory, the lines of the furniture, and the color in the room will begin to adjust themselves.

Ensemble Necessary
A room in which simple furniture, designed with good lines, though it be made of pine or cherry, is far better than an ill-assorted combination of hodge-podge pieces of expensive furniture, whose lines lack harmony, and whose colors fight with each other.

Different periods may be combined, but they must harmonize. Spanish furniture is popular today, but it should not be combined with Colonial designs and contemporary English and Provincial French models would adjust themselves nicely.

Beautiful rooms, then, must be carefully planned, and every corner must make a pleasant picture, while fitting into the scheme of the whole.

Six plane surfaces—four walls, floor and ceiling—compose the usual room. The problem of arrangement is to place furniture, fixtures and decorations so that each separate surface by itself is balanced pleasantly, at the same time blending into a harmonious whole.

Each chair must be placed so that it conforms to what is behind it on the wall, and underneath it on the floor. Pictures and draperies cannot be considered separately, but must fit into the group formed by furniture and walls.

Rugs Must Harmonize
Carpets and rugs form the transition from walls to furniture in a room. As the group of rooms adjoining each other must harmonize without a single, jarring note, so must the floor coverings inside the smaller unit. They must hold the room together and make it an ensemble rather than a display of isolated groups of furniture.

Rugs and carpets must be chosen to soften the texture of the floor and walls, and to soften the floors to the tread of the feet. Form and color should conform to the spirit of the room. For instance: Hooked rugs fit the Colonial atmosphere, where a Chinese rug would be out of place. Restful, not restive carpets belong in the bedroom.

Like the drapes and the finish of the walls and woodwork, they should contain just enough color to frame the picture—or make a pleasant background. But weak, insipid colors are just as deadly as too gaudy tones. The motif or ornamental figures in the floor covering should conform to the lines of the room, and care should be taken that the realistic and the allegorical are not combined in the same rug or carpet. If the furniture is curved, the figure in the carpeting should be the same.

Entire Floor Carpeted
Many modern homes have adopted the effective scheme of carpeting the entire floor of adjoining rooms in the same material. If rugs are to be used effectively, the floors must be polished to a soft glow, and kept that way.

Amalgamated carpets of plain shades, entirely devoid of design except for little landscapes, have achieved a recent vogue in England and will soon appear in this country. If the colors are chosen wisely, the vivid landscapes will

HOW TO GET TO BEN LOMOND PARK HOME

Go south on Commercial or High streets, preferably the latter. Turn to the left (east) at the McKinley school and take the drive leading east immediately in front of the Lamport Ben Lomond drive. Or turn at the McKinley school and go straight ahead on McGilchrist street. This leads to the front of the Ben Lomond Park Home.

SPECIAL SHAKES ON OUTSIDE ARE NOVEL

Dull, deep green Creo-Dipt raked shakes purchased through Spaulding's Building material store are used on the outer walls of the Ben Lomond Park Home. The shade used is of a rustic nature having just enough brown to create the impression of the raw shingle showing through the stain. This little tone of brown does away with the usually dark and unpleasant contrast of brick red and green against the cream stucco in gable and doorway.

However, the color is not the only desirable feature of these shakes. They were selected by the builder because they represent the most modern achievement along building lines, combining beauty and practicality.

Creo-Dipt shingles are made from good grade red cedar; are dipped under pressure in hot stain until thoroughly saturated; and are carefully inspected before packing to insure evenness of stain. Very unusual lasting qualities are thus insured.

An exceptionally beautiful rake offered another reason for the choice of these particular shakes: the rake is that of the old-fashioned well-split shake.

The number of shingled houses one sees about Salem is apt to be substantially increased, if Spaulding's are correct in their forecasts. It is their belief that the economy of a shingled house has never been properly understood.

The long lifetime of Creo-Dipt shingles and the fact that they can be laid right over old siding for no more than the cost of two repaintings have done much to make their desirable beauty and easily realized requirement for the average home owner.

ELASTIC GIRL MYSTIFIES

Scientists of Europe are mystified over fifteen-year-old Kathleen Harcourt, who has been nicknamed "Miss India Rubber," of Birmingham, England. Normally five feet, six inches tall, she creeps no more than the cost of two repaintings have done much to make their desirable beauty and easily realized requirement for the average home owner.

ELPHANT BLOCKS AUTOISTS

Unusual hazards for autoists have been reported by M. M. Abadie and Vairat, two Frenchmen, who have been making a motor trip from Saigon, French Indo China, to Paris. It took them nearly two months to cross the steep and dangerous Tennesseer hills, and between Moulmein and Pegu they had to use rafts to convey their car over 18 streams. At one point an elephant blocked the road and refused to move. They shot it, but it dropped in their pathway. Unable to remove the carcass, they had to clear the jungle and make a detour. Tigers were at times so numerous that the men kept watch by turns.

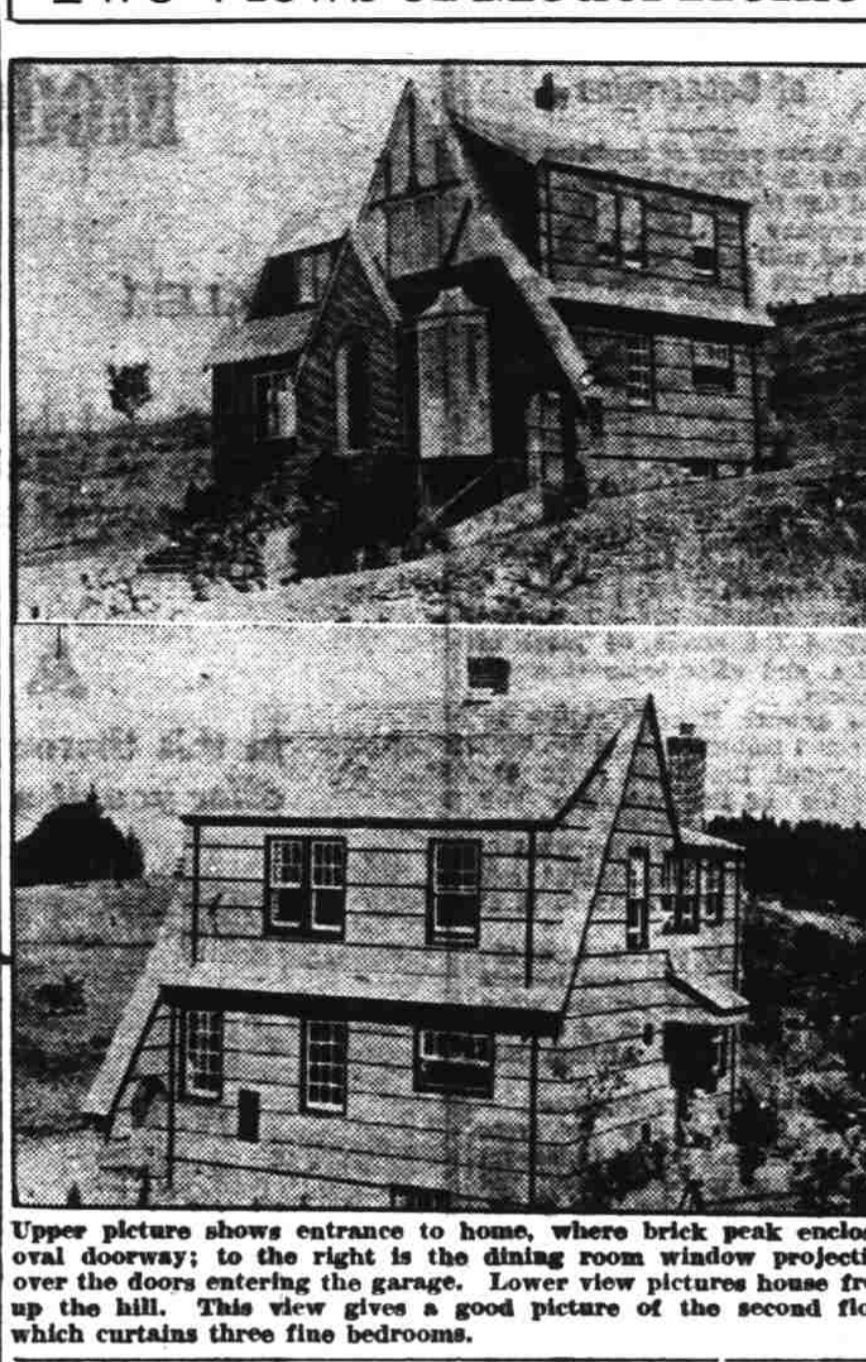
REID ESTATE APPRAISED

The estate of James Reid has an approximate value of \$569 according to an estimate filed in probate court here Friday.

ORDER HANDED DOWN

An order in favor of the defendant was handed down in circuit court Friday in the case of Lyllis Kapphan vs. W. R. Slade. Costs of the action were granted to the defendant.

Two Views of Model Home



Upper picture shows entrance to home, where brick peak encloses oval doorway; to the right is the dining room window projecting over the doors entering the garage. Lower view pictures house from up the hill. This view gives a good picture of the second floor which contains three fine bedrooms.

Perfection Best Term for Explaining Electric Service To be Found in New House

The term "perfection" may well be applied to the electric equipment in the model home. Every need of the housewife has been considered in furnishing tastefully in attractive colors at suitable prices and sizes the electric appliances, which with the exception of the vacuum cleaner are from the Portland Electric Power company.

The average male observer will note with pleasure the beauty of color and line, the sanitary and inviting appearance of the electrical kitchen. Women cannot fail to realize that these modern devices have been installed with an eye to economy—economy of time, effort space, and running expenses as well as a saving in initial cost.

Among the many features of the Westinghouse full automatic range perhaps the most attractive is the "flavor zone" oven. Thermostatically controlled, this oven cooks food in a way similar yet altogether different from the old dutch oven, which traditionally famous for its finely flavored foods.

Control Is Great Help
By means of the efficient method of control the housewife may prepare her dinner, place it in the oven, set the clock, and spend the day outside the kitchen. The dutch oven principle not only causes the food to retain its finest flavor but also saves electricity as applied in this Westinghouse model, for when the power is automatically turned off the food goes right on cooking in the sealed oven. And all these advantages do not clutter up the kitchen but are found in one compactly arranged, easily cleaned, shining green enamel range.

It seems almost paradoxical that scientists should go to such pains to perfect a method of heating foods and in almost the same moment with the same power be struggling with a kitchen device for cooling and keeping cool foods. That the family living in the model home may live model lives as far as bodily health and living expenses are concerned, a General Electric refrigerator, model G40,

of lubrication forces off through the bearings with seven pounds' pressure at the rate of one pint per minute. The smooth white porcelain finish is easily cleaned and rounded corners leave no place for dust or dirt to lodge.

Appliances Helpful
The dining room appliances (percolator, toaster, etc.) are Hotpoint. The most outstanding of these is the new table timer, which makes other appliances automatic. In the model home the toast will be done to a turn as will also coffee and waffles, the radio will be turned off after the family retires, the washing machine will automatically cease to gyrate when the washing is done even though the model wife is attending a bridge party. This little table timer is enclosed in an attractive green hake-like case in modernistic design and may be placed on any well-set table.

The laundry room is equipped with Thor number one gyrotor type washer, which is the "Paris Model" among electric washing machines, and Thor number ten table ironer which combines the

advantages of the old "mangle" and electric iron. Indeed, the model home is modern in every electrical respect.

LANTERN BY NIGHT GUIDE TO VISITORS

The beauty of the Ben Lomond Park Home is not lost by night. The visitor is greeted after dark by a hooded lantern of English design over the gabled doorway. Although most modern, this does not detract from the dignity and beauty of the English home. The wiring was done by Leo Johnson, who is fully equipped to take care of all types of wiring, and the fixtures, selected from his stock might have been themselves the inspiration for the building of the house. A wrought iron effect is achieved in the cast aluminum and the colors of carpets and furnishings are found in

ITALIAN SEARCHERS DISCOVER NEW ISLE

ROME, June 21.—(AP)—A patrol from the expedition of the steamer "Sueci," which is searching for trace of the missing members of the Noble party, while exploring northward from north-east land, Spitsbergen, claims to have discovered an island not named or indicated on maps. It lies east of Reps Island and was named for the vessel of the expedition. (An Italian expedition headed by Gianni Albertini sailed from Bergen, Norway on May 15 for the north to search in the vicinity of the Spitsbergen archipelago for the six members of the crew of the dirigible Italia whose fate has never been ascertained.)

The Fire Place in the Ben Lomond Park Home is a Fire Place of Distinction

Don't fail to inspect it. A work of art such as this is can be secured only by the use of ArtTile.

If you desire a Truly fine piece of work at a reasonable price call—

E. R. VIESKO

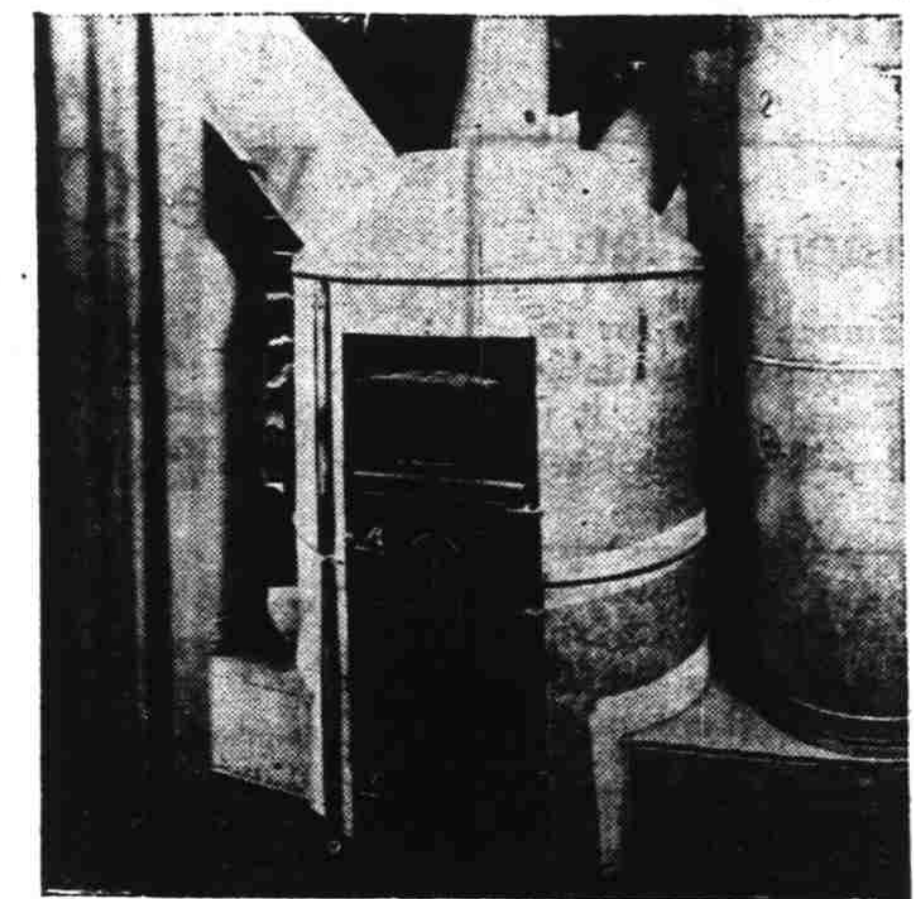
2060 S. High St. Telephone 2633J

The "Armor Plate" Furnace

(Mfg'd by Eastman Brothers)

Is the Last Word in Efficiency, Economy, and Comfort

The Result of 25 Years of Home Heating experience and study.



CHOSEN FOR
The Ben Lomond Park Home
Now being shown by Mr. D. L. Bond.

For a Closer Inspection of This Super Furnace

Geo. Quesseth

615 N. Capitol St. Salem, Ore. Or. Write Eastman Brothers, Silverton, Ore.

Phone 2166

E. FISHER

Plain and Ornamental Plastering

Ben Lomond Park Home plastered by us

1165 Cross Street Salem, Oregon