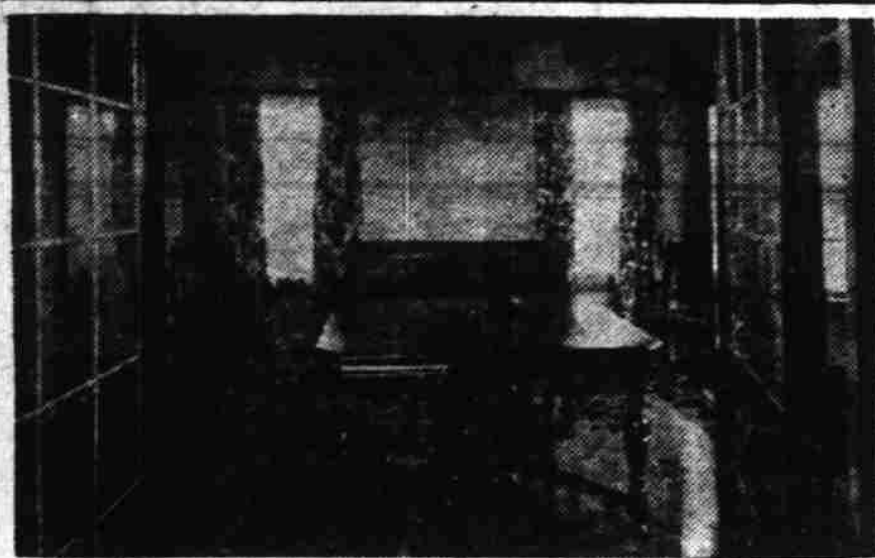


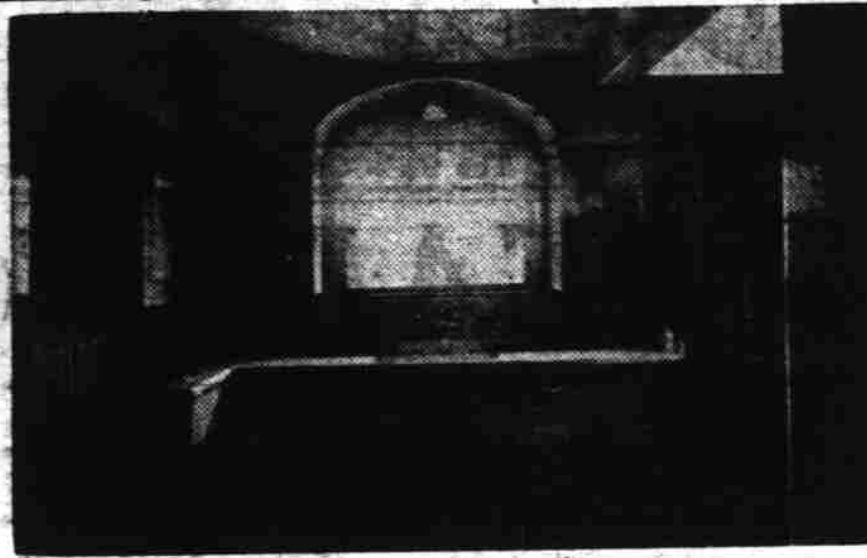
Here Are Interior Views of the Ben Lomond Park Model Home Showing How Delightful a Spot This New Dwelling Really Is



Could you imagine a more tasty, novel and yet amply substantial fireplace than is pictured here? It fairly radiates household "it".



A cozy group could gather 'round this festive board and have the jolliest sort of a time. It's one of the nicest rooms in the house.



camera couldn't register the delicate color effects of this epic scene in the kitchen but mi-lady will when she visits the home this week.



Here's home comfort; the beautiful living room from which one may overlook the city or turn his back on it and watch the blaze in the lovely fireplace.

BIG INSURANCE BUSINESS BUILT

Bell Finds Courtesy to Customers Means Big Increase in Field

Insurance for the Ben Lomond Park Home has been handled by P. H. Bell with offices in the United States National bank building. Mr. Bell, in the four years he has been active in Salem business affairs has developed a remarkably well established loan and insurance firm.

In every field of real estate financing in the Salem territory, Mr. Bell is prepared to make loans, either on downtown business property, residence realty or on farm lands.

At the same time Mr. Bell has extensive interests in the insurance business. He is prepared to handle every field of insurance demanded by business interests in Salem.

Mr. Bell has foreseen a Salem of beautiful homes and has been willing at all times to encourage sound development with the view, not alone of providing an outlet for funds which he has to place at interest, but, as much with the idea of seeing a beautiful city develop in the heart of the Willamette valley.

In his business relationships Mr. Bell has been exceedingly helpful to his clients, taking upon himself all details of a financial project. His accommodating and courteous treatment of customers has done much to bring about the rapid development of his firm.

HOOVER REPLIES TO SHOOTING PROTESTS

INTERNATIONAL FALLS, Minn., June 22.—(AP)—Appeals to President Hoover for relief from the local city council for relief from what was described as an "unbearable situation," resulting from prohibition enforcement activities in this section, brought a reply from the White House today that the federal government does not intend in any way to transgress the limits of the law.

The letter from the president, under date of June 18, was in reply to a telegram dispatched by the city council after the slaying of Henry Virkkula, Big Falls confectioner, by a federal border patrol agent, in search of liquor runners.

Geometric Perfection Is Requirement if Ornament Is to be Worthy Addition

Any garden pool must fit in with the general garden scheme. If the garden is formal, the pool must be formal; if the garden is informal, then a naturalistic pool is necessary.

The ornamental pool should be placed in one of the most conspicuous places in the garden. It should be geometrically perfect and must contain a complete finish with no rough places whatsoever. It should contain a balanced and symmetrical planting.

The informal pool is more enticing because of the naturalistic effects which may be incorporated in it. If it is properly built, the garden can be transformed into the wilds of nature. The location should be carefully selected and a strict informality and apparent carelessness employed in the building of this type of pool. The beauty of the natural pool is strengthened by plantings which have been studied over and carefully planned. Consider that the pool in the wild has certain characteristics, then plan your own pool accordingly. Carefully study the kinds of wild plants which grow near the streams and where it is possible collect a supply for your own pool.

Plants which are purchased at the nursery should be such that give the appearance of moisture. Plants for the pool must either grow in a moist soil or give the appearance and feeling of moisture. For the informal pool, deciduous shrubs obtain the best effects, although an occasional evergreen may be placed with careful study. It is always safe to plant willows, elderberries, huckleberries and most of the common wild shrubs around the naturalistic pool.

Perennials May Be Used
Perennials which are in reality dry soil plants may be planted if they give the feeling of wetness. All the lilies will give the desired impression. This is true especially of the Siberian lily. The cardinal flowers, the marshmallow, the wild goldenrod and all the various ferns may be planted around the pool. Most nurseries, and especially those which specialize in rock plants, grow a large list of plants suitable for pools. The marshy appearance is always carried out with plantings of all the grasses. A few annuals such as California poppy, verbena, forget-me-not may be used to fill in and add color. Even a few trailing plants such as myrtle, Japanese spurge, snow in summer add to the charm of the naturalistic pool.

In constructing the natural pool extreme care must be used to produce the rustic effect. All of the cement work must be completely concealed. Occasionally the whole pool is lined with rocks after the sides and bottom of the pool have been poured. A naturalistic effect is obtained in this manner if care is used to lay the rock in a somewhat careless fashion, without a trace of artificial stiffness, but rather with a rustic finish patterned after nature. At least should the concrete margin

Iron Furniture Popular



Durability Great Reason For Iron Garden Furniture

Lacquered iron furniture has long been popular for the lawn and garden. One of the main reasons for this popularity is doubtless its durability. Because of the wear-resisting qualities of the lacquer, supplemented by a coat of clear spar varnish, which thoroughly coats the chairs and tables, rain, dew and blazing sunshine are dared to do their worst and successfully defied.

Beauty of Line and Finish
Another point in the furniture's favor is its beauty, both of line and of finish. Formerly all iron way down toward the pool over rocks and through the plant lined bed. There may be a miniature bridge across the stream to present occasion for new and varied vistas.

ASKS APPOINTMENT
Appointment as administrator of the estate of Anna V. Combs, deceased has been asked by Lloyd Rigdon who declared that no relatives are living to his knowledge. The value of the estate is estimated to be \$1000.

Leo H. Johnson, Electrician, wired this house with the very best of materials.

He always employs the most competent of electricians, thus can give the Best of service.

Try them on your next job and you won't be sorry.

REPAIR WORK

on ranges, vacuum cleaners, etc., also motors, will be done to your complete satisfaction.

COMPLETE STOCK OF FIXTURES CARRIED

Leo H. Johnson

1215 S. Com'l

Telephone 2600

Main Purpose of Vines Is To Act as Cover; Old Fence Can be Made Attractive

No planting is complete without the climbing vines. These plants are used to cover all bare surfaces which would otherwise be unattractive. How barren is a cold stone building or a wall without the greenery and bloom of a climbing vine, or even the garden fence as the background for the shrubs and flowering plants.

The main purpose of vines is to act as a cover. However, many times, the various vines are used as an ornament for the arbor or trellis. Most vines of the perennial nature are slow growing and a number of years are consumed before the entire area is covered. However there is a rapid growing vine in the form of the annual vine. This kind of vine may be planted from seed each year and quick results follow.

By FRED BLAKE
The best and most popular perennial vine to use upon smooth walls is the Boston Ivy. This vine grows rapidly after the first few years, after the roots have become accustomed to the soil. The foliage is a bright glossy green which turns to a bronze in the fall after the first touch of frost.

The leaves cover the entire area and it must be watched to keep from taking too much space such as covering windows and doors. The vine should be kept cut away from wood work as it will in a short time harm it. This vine should not be mistaken for the English Ivy which has a darker color and larger leaf. The English Ivy will not cling to a smooth surface and when used as a covering for a wooden fence, trellis or arbor, will have to be tied up. It is also a fine plant for a ground cover to be used on a steep bank.

Oregon Foliage Beautiful
The Virginia creeper is of the same general type as the English Ivy except that it loses its leaves in the winter. It must be tied to the object which it is to climb. It produces a beautiful green foliage when grown to a trellis beside the house or along the garden fence. The Japanese honeysuckle has been an old favorite for years and as a cover for old buildings, fences and arbors has no equal. It grows in a thick mass with small leaves and sweet scented flowers. It is sometimes used as a cover for trellises, garden fences, and steep slopes.

ly cut off as plants will form. The object is to retain all of the bloom stalks in order to obtain as many blooms as possible. The leaf stalk is easily distinguished from the bloom stalk. The leaf stalk is long and smooth while the bloom stalk is short and stubby and contains small horn-like projections.

So much for the perennial vines. The annual vines are large in number but not in popularity. Years ago these vines were more widely used than they are today. The cardinal climber is considered the most beautiful and brilliant annual climber. It is a strong and rapid grower which will in a short time cover the trellis with a fern-like foliage. The vine is covered with a blaze of circular, cardinal red flowers which bloom from mid-summer until frost. All annual vines are sown directly in their permanent bed. The cypress vine is also a climber of rapid growth and will attain in a season from tea to fifteen feet. It has a delicate fern-like foliage and a great number of star shaped blossoms with long tubes. Planting gourds is an old time practice. This vine not only produces a rapid cover for porches but it also bears fruits of curious shapes. This vine is not generally used in the cities, but is sometimes seen on some of the older farm homes.

Morning Glory Good Screen
The morning glory and cucumber vine make a quick screen, but it must be remembered that it is harder to rid the soil of this plant than to seed it. Once in, it is next to impossible to remove it. The roots creep under the soil, spreading rapidly. Before planting these seeds, be sure that not other plants will be placed in that location. The nasturtium is very popular as an annual, although it does not attain a great height. It may be used to cover fences and other low objects. This plant blooms undisturbed from early summer until frost. The nasturtium usually seeds itself, enough seeds from the original planting germinating in the spring. Nasturtium flowers more freely when planted in a rather poor soil.

BIG ORCHARD SOLD
The Three Oaks orchard, comprising 252 acres near Medford, has been sold to James E. Edmiston and W. B. Biddle. The consideration was \$112,000. The orchard includes 160 acres of bearing pear trees.

Sidewalls and Roof of the Ben Lomond Model Home are the genuine

CREO-DIPT SHINGLES

Creo-Dipts are selected red cedar, stained and preserved to require no upkeep for years. As you approach the Model Home note how the Creo-Dipt shingles give it character and add to its attractiveness.

Creo-Dipts are distinguished for—

Beauty—The rich, permanent colors, available for every color scheme, enhance the beauty of the exterior of the home. And this beauty is permanent.

Economy—Low first cost. Saves painting costs. The carefully selected cedar wood lasts decades and the permanent stain gives protection against all weathers.

Practicability—Creo-Dipts may be used on new houses for roofs or sidewalls, or on old houses. Modernize your home by putting Creo-Dipts over the old sidewalls.

Creo-Dipts sold in Salem by

Spaulding Logging Co.

SEE SAMPLES—ASK FOR ESTIMATES



We are at your service

Consult us in Regard to Financial Matters

P. H. BELL

Real Estate Loans, Insurance — Surety Bonds

219 U. S. National Bank Building

Phones 607 — 3009 J

Salem, Oregon