

## TIME FOR PARKS TO OPEN GIVEN

Many Tourists Disappointed That Season is Delayed by Snow, Rain

"All national parks in the northwest open their 1929 season the last of June or the first of July," stated A. E. Shearer, director of the touring department of the Oregon State Motor association. "Many tourists are coming through with the expectation of visiting Crater lake and Mount Ranier and are very much disappointed to find that both these parks do not open for several weeks yet. The Oregon Caves in Josephine county have been receiving weekend guests all winter and are now open and caring for guests through the week, but the caves are a national monument."

**Dates For Opening Given**  
Following are the dates on which all the national parks are open and this information is given out with the idea that persons planning their vacations will not be disappointed upon reaching their objective to find that the parks are closed:

Crater Lake, Oregon—July 1 to September 20.  
General Grant, California—May 15 to October 1.  
Glacier, Montana—June 15 to September 15.  
Grand Canyon, Arizona—Open all the year.  
Hawaii, Hawaiian Islands—Open all the year.  
Hot Springs, Arkansas—Open all the year.  
Lafayette, Maine—Open all the year. (Summer season June 15 to October 15.)  
Lassen Volcanic, California—June 1 to September 15.  
Mesa Verde, Colorado—May 15 to November 1.  
Mount McKinley, Alaska—June 1 to September 15.  
Mount Rainier, Washington—June 15 to September 15.  
Platt, Oklahoma—Open all the year.  
Rocky Mountain, Colo.—Open all the year. (Summer season, June 15 to September 20.)  
Sequoia, California—May 15 to October 1.  
Sully's Hill, North Dakota—June 1 to September 30.  
Wind Cave, South Dakota—Open all the year. (Summer season, June 1 to Sept. 30.)  
Yellowstone, Wyo.—June 20 to Sept. 19. (Open June 1 to Oct. 15 for motorists.)  
Yosemite, California—Open all the year.  
Zion, Utah—June 1 to September 30."

### TALK WINS JOB

ZITTAU, Germany (AP)—Albert Orth, 26, landed the job of mayor of Oybin, a health resort of 1,500 inhabitants, by his oratorical ability. More than 200 candidates applied for the vacancy, but the choice narrowed down to three who settled the question by debating "The modern problems of a municipality and the particular necessities of a resort."

**FORBIDDEN TO MARRY**  
ANGORA (AP)—Turkish army, navy and aviation officers have been forbidden to marry before they are 35 years old because before that age, the authorities said, matrimony interfered with their work. A previous order forbade them to marry any but Turkish Moslems.

## Especially Appealing



There might be a young man just out of view of the camera, for all we know. Anyway, the Hispano Buick Century Six roadster with pretty Miss Doris Hill, Paramount star perched on the fender, seems just about as pleasing a combination as even an artist could desire.

## RODEO STARS MANY

Internationally Known Riders Are Booked

JULY 2, 3, 4 ARE DATES

There are times when the public likes to know something about the persons who "do things" for their amusement. In the town of Molalla, "the little town with the big buckaroo," there will be three distinct characters taking part in the annual carnival July 2-3-4 whose names are internationally known. Bonnie Gray, Vera McGinnis and Edward Wright are said to be "the last word in rodeo productions."

The Molalla Buckaroo has always shown the best in the rodeo line and this year's talent will surpass all others. With the thousands of covered seats for the big crowd and ample free parking space anyone who comes to Molalla is certain of an enjoyable day.

The New York Commercial Globe in speaking of Bonnie Gray says "for sheer grace and marvelous riding Bonnie Gray leads them all."

### Dodge Puts Auto Together in Less Than 2-Hour Time

How long is required for the final assembly of a motor car?

Despite the precision and care necessary in handling the various units along the two parallel assembly lines of Dodge Brothers, a chassis frame of the new Six models is a completed car ready for shipment just one hour and 59 minutes after it starts down the assembly line. These assembly lines are 1,451 feet long, and have a capacity of one car every 36 seconds.

Behind this final assembly—usually the most interesting place to visitors of an automobile factory—is a story of efficiency comparable to the system of getting food and munitions to the front line trenches in warfare. Every department must function so the parts continue to move forward without interruption.

has ever ridden bulls in the Mexican arena. Bonnie Gray will positively be at the Molalla buckaroo July 2-3-4 and at no other rodeo attraction.

Vera McGinnis and her trick horse, Scotty, needs no introduction to rodeo goers. Ed. Wright, the greatest of clowns, whose appearance at Pendleton, Cheyenne and Madison Square, New York, is a head line event, will be at Molalla.

July 2 is the day set for all community clubs and they will be there in large numbers because Molalla's buckaroo is a community project.

## Well, Well, One Drop of Gas Will Take Auto a Foot

Through the medium of an efficient automobile engine a single drop of gasoline will roll an automobile weighing nearly a ton and a half over more than a foot of highway.

This example of the marvelous power developed in the modern automobile was figured out by Werner Fetz, research engineer for the E. L. Bruce Lumber company of Memphis, Tenn. after he had completed a recent 3,000-mile trip through the east in his Oldsmobile Six landau.

For the first 1,000 miles of the trip Mr. Fetz and a companion alternated at the wheel of the Oldsmobile, each driving 100 miles at a time, and made stops only for gasoline and one meal. The remainder of the trip was made by Mr. Fetz alone but it showed equally outstanding car performance.

### MUST WORK ON ROADS

Every man in Yugoslavia must give his service for six days in every year for road making, according to a new government decree. Owners of auto trucks and horse-drawn wagons, must lend their vehicles for three days of each year. According to Premier Jivkovic, the country's most pressing need is a first-class system of modern roads.

A Cuban commission is working over how to reduce the national budget without shalshing salaries.

Read the Classified Ads.

## Oregon's Bond Issues Build Finest System in Union is Viewpoint of State Leader

"Oregon's bond issue for highway purposes has built the finest highway system of any state, taking into consideration population and car registration," stated Dr. E. B. McDaniel, president of the Oregon State Motor association in a recent address.

"In 1917 the voters of Oregon authorized the issuance of bonds for highway purposes up to 4 per cent of the assessed valuation of the state," continued the doctor, "and of this amount approximately \$38,000,000 have been issued but bonds have been gradually retired until at present we owe approximately \$30,000,000."

"The amount of bonds authorized by the various states in the Union and the year of their authorization provides a very interesting study as it shows the approximate time when each state became 'road conscious.'"

Following is a list of bond issues and year of authorization of the various states:

State	Year first authorized	Total bonds authorized
Alabama	1922	\$ 50,000,000
Arkansas	1927	52,000,000
California	1909	73,000,000
Colorado	1921	11,000,000
Connecticut	1911	3,000,000
Delaware	1917	10,530,000
Idaho	1905	3,747,000
Illinois	1918	160,000,000

Iowa	1928	100,000,000
Louisiana	1918	32,700,000
Maine	1913	19,825,000
Maryland	1908	28,545,000
Massachusetts	1894	16,250,000
Michigan	1919	50,000,000
Missouri	1921	135,000,000
Nevada	1919	1,300,000
N. Hampshire	1919	1,000,000
New Jersey	1920	76,000,000
New Mexico	1912	2,500,000
New York	1906	400,000,000
No. Carolina	1921	115,000,000
Oregon	1917	39,200,000
Pennsylvania	1919	100,000,000
Rhode Island	1906	6,600,000
So. Carolina	1929	65,000,000
So. Dakota	1919	6,000,000
Tennessee	1927	11,500,000
Utah	1911	7,260,000
Vermont	1928	8,000,000
Virginia	1926	7,500,000
Washington	1909	190,000
W. Virginia	1921	25,000,000
Wyoming	1919	4,000,000

Total .....\$1,692,245,500



Joe Williams Service That Satisfies

## NO CHARGE

FOR  
Balancing the Electrical System  
IT WILL MEAN LONGER LIFE AND BETTER SERVICE FROM YOUR BATTERY

"Service That Satisfies"

**JOE WILLIAMS**

Center & High

Phone 199

**STUDEBAKER**  
WORLD'S LARGEST BUILDER OF EIGHTS

*announces*  
*another thrifty Eight*  
*of champion quality*

**The Dictator Eight**  
115 INCH WHEELBASE

**\$1185**  
at the factory

*Straight eight motor; 115-inch wheelbase; Hydraulic shock absorbers; Forward-shock front springs; One-piece steel-core steering wheel; Non-shatterable windshield; Adjustable steering wheel and front seats; Genuine mohair upholstery; Amplified-action 4-wheel brakes; Double-drop frame.*

STUDEBAKER'S New Dictator Eight is precisely what you would expect of the Builder of Champions. The finest expression of modern motoring—a straight eight by Studebaker! Companion car to the World Champion President and the famous Commander. Champion quality at a low One-Price price—possible only because Studebaker builds more eight-cylinder cars than any other maker in the world.

The New Dictator Eight is a motor car of almost breath-taking beauty—gracefully low swung on the famous Studebaker double-drop frame, its color harmonies striking and distinctive, its exterior bright-work in lasting, glistening chromium.

In economy of fuel and oil this new eight rivals the thriftiest sixes. Performance is measurably more satisfying than any other car at its price has ever provided.

This New Dictator Eight was developed on Studebaker's Million-Dollar Proving Ground, by the same

brilliant group of engineers whose genius and research have endowed Studebaker cars with the ability to win and hold every official stock car speed and endurance record.

You who have always wanted a straight eight (and who has not?)—may now enjoy the silken smoothness of Studebaker straight eight power, the unhesitating traffic mastery of it, the flexibility and pick-up which it gives you. The economy of operation upon which you have insisted will be yours, along with low initial investment.

The new Dictator Straight Eight offers you today champion performance at a One-Price price utterly without parallel in motor history. Come in and see it—drive it—today!

### STUDEBAKER MODELS AND PRICES

The President Eight	\$1785 to \$2575
The Commander Eight	1495 to 1675
The Commander Six	1350 to 1525
The Dictator Eight	1185 to 1435
The Erskine Six	860 to 1045

PRICES AT THE FACTORY

"Studebaker Champions" Sunday evening 6:15 to 6:45 Pacific Standard Time—NBC Chain

## MARION GARAGE CO.

Wallace H. Bonesteel  
Day and Night Service

235 S. Commercial

Phone 362

**More doctors**  
**more lawyers**  
**more business men**  
**buy Buicks than any**  
**other fine car**

Professional men know automobiles. Their very standing in their communities demands that they drive cars of outstanding merit and reliability. It is significant therefore that more doctors—more lawyers—more business men the country over buy Buicks than any other fine car!

You will find these discerning owners agreed that Buick combines the maximum of tasteful luxury and distinction... and, in addition, a margin of clear-cut leadership in power, get-away, swiftness and stamina so remarkable as to single out Buick as the great performing automobile of the day!

Take the straight route to satisfaction which this overwhelming preference suggests! Take the single drive which will almost certainly lead you to buy a BUICK!

BUICK MOTOR COMPANY, FLINT, MICHIGAN

Division of General Motors Corporation Buick and Buick Motor Cars

These prices f. o. b. Buick Factory, special equipment extra. Buick delivery prices include only reasonable charges for delivery and franchise. Conveyance fees can be arranged on the Buick & M. A. C. Visa Payment Plan.

Consider the delivered price as well as the list price when comparing automobiles.

## OTTO J. WILSON

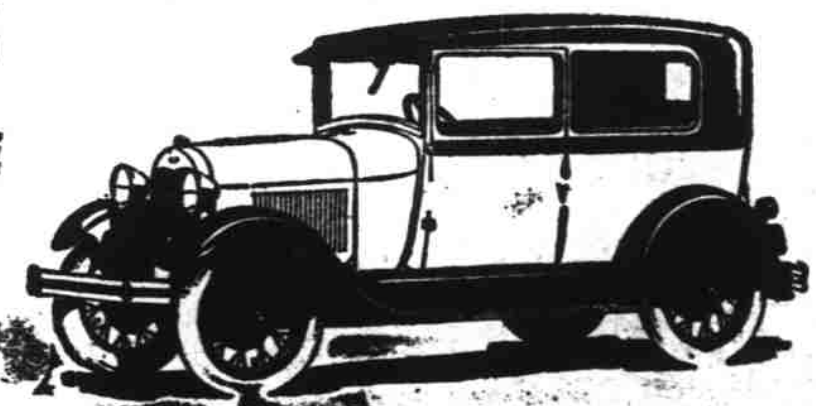
388 N. Commercial

Telephone 220

When Buick Automobiles Are Built Buick Will Build Them

**\$525**

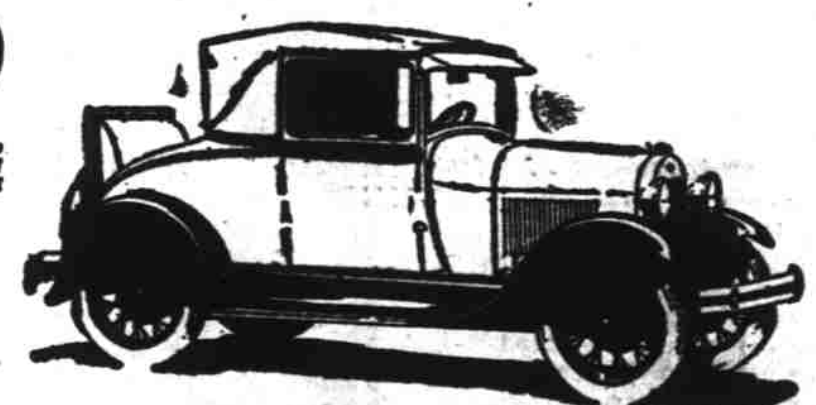
(F. O. B. Detroit, plus charge for freight and delivery. Bumpers and spare tire extra.)



**NEW FORD TUDOR SEDAN**—Combines the features of all the new Ford cars. Beautiful low lines and choice of colors... quick acceleration... 35 to 65 miles an hour... vibration-absorbing engine support... four Bend-Six hydraulic two-way shock absorbers... Triplets dust-proof windshield... fully enclosed, silent six-brake system... typical Ford economy, reliability and long life.

**\$550**

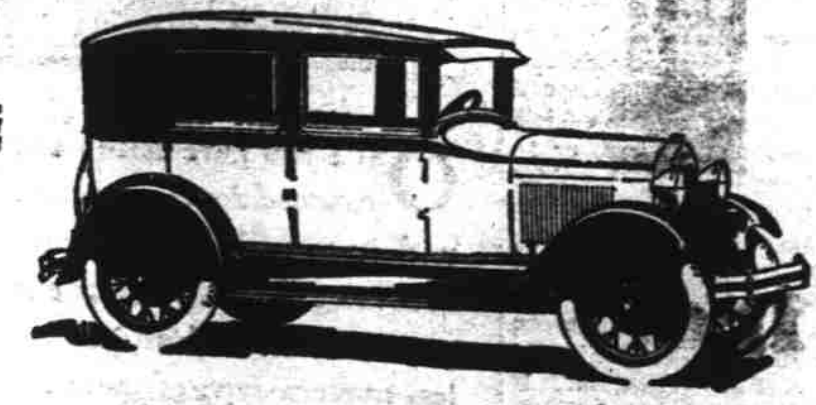
(F. O. B. Detroit, plus charge for freight and delivery. Bumpers and spare tire extra.)



**NEW FORD SPORT COUPE**—The new Ford Sport Coupe brings you smart style with speed, comfort and unusual handling ease. Low, fast lines—distinguished by their substantial simplicity. Your choice of a number of beautiful two-tone color harmonies. Prerogative lacquer lifetime finish. Rumble seat included as standard equipment.

**\$625**

(F. O. B. Detroit, plus charge for freight and delivery. Bumpers and spare tire extra.)



**NEW FORDOR SEDAN**—This good-looking Fordor Sedan has been built for comfort—and service. Generous seat space and ample leg room for all five passengers. Rich, durable upholstery. Deep cushions. Bow light. Full-enclosed hardware. Your choice of a number of colors. An unusually good family car because of its comfort, speed, safety, reliability, low first cost and low up-keep cost.

Call or telephone for a demonstration



## VALLEY MOTOR CO.

Chemeketa and Liberty Streets

Telephone 1995