

OAKLAND LEADER SEES BIG YEAR

April Shipments Barely Miss Record-Breaking Mark for All Time

Nationwide substantiation of the optimistic forecasts for a record in 1929 automobile sales is clearly borne out in a statement just released by W. R. Tracy, vice president in charge of sales for the Oakland Motor Car company. Shipments of Oakland and Pontiac sixes during the first four months of 1929 totaled 118,222, making a new high record for this manufacturer.

Tracy said: "April shipments, alone, totaled 36,384 cars, which is just 76 cars short of the 36,460 shipped in March—the high month in the company's records. But for the fact that there was one less working day, than in March, April would have been the greatest month in our history."

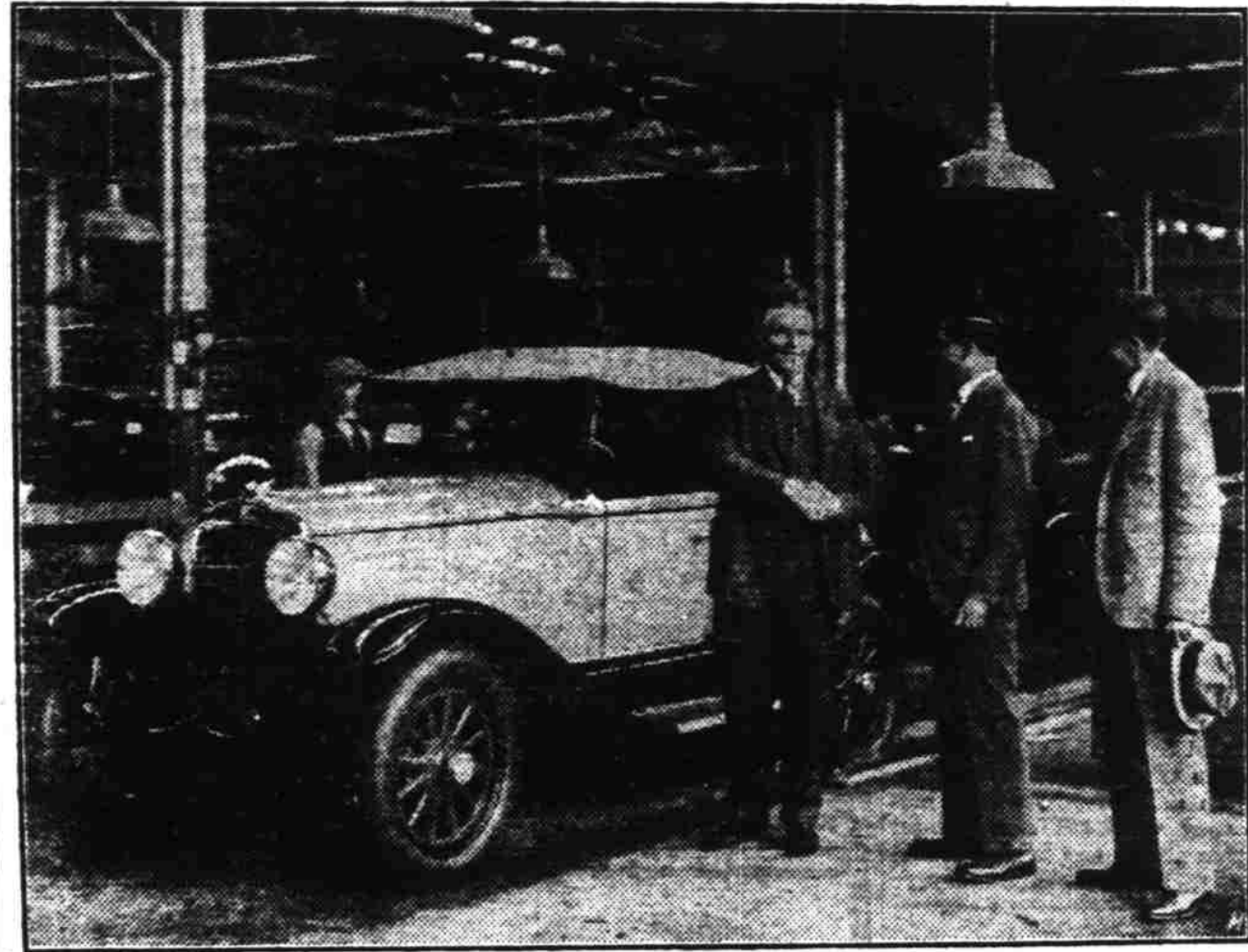
Record Shipments Made
"Our record shipment of 118,222 cars during the first four months of 1929, more than doubled the total of 53,877 cars sold in the same period of 1927 and bettered the 1928 period by 15,591 cars."

Tracy pointed to the March and April 1929 sales as an indication of the general market trend, stating that the total for these two months shows a gain close to 20 per cent over March and April of last year.

"The industry as a whole is showing a decided increase in sales during the spring months of 1929. One of the greatest factors in this increase is the replacement market. During 1925 and 1926 a total of 8,736,135 cars and trucks were sold in the United States and Canada. These three and four year cars are now being replaced with new cars, and account in a large measure for the general sales increase throughout the country."

"Production schedules in the Oakland factories are keyed up to

A Thousand-Plymouth Surprise



Faced with an ever-increasing surplus of orders over production, A. vanDerZee, general sales manager of the Plymouth Motor corporation, has been "riding" the Plymouth factory officials for more cars. While the force of trained workers and production has been increased steadily since operations were begun at the mammoth new Plymouth plant in January, it was not, expected that the thousand-a-day clip would be reached until the middle of May. However, F. C. Sauerbrey, Plymouth operating manager, came through with a welcome surprise by hitting the thousand mark on April 30, when 1002 Plymouths were produced. Mr. vanDerZee (center) is seen above congratulating Mr. Sauerbrey on his feat as the thousandth Plymouth for the day rolls off the production line. E. G. Poand, Plymouth director of distribution, looks on approvingly.

keep pace with the increasing demand for the Oakland and Pontiac sixes that are meeting with particular favor in the medium and low price class. In the low price field particularly, spring buying has been most brisk.

"Our plant has been operating at capacity since January and it now seems probable that we will continue at top speed well into the summer season or for a longer period than ever before."

Protect yourself against Auto and Travel accidents with a \$1 insurance policy issued by The Oregon Statesman.

6 Big Crims in Two Years Are Unsolved in Boston

BOSTON — In a period of more than two years only six major crimes have been marked "Unsolved" in the records of Boston's police department. This record, police experts believe, is one that few large cities can equal.

Four of these crimes were thefts or robberies and two were murders. One of these killings ranks with the strangest mysteries, for not even a motive ever was discovered for the slaying of Malbelle Matheson, 19-year-old knitting mill employee. She was set upon and beaten while going home one winter evening in 1927. Her body was dragged across a field and left on an ice-covered pond, where it was discovered next day.

All "Tips" Fall
Maybelle had no enemies, as far as police could learn. "Tips" poured in for weeks after the crime, but all proved fruitless. Inspectors traveled thousands of miles running down vain clues.

Not even the weapon used in the crime was identified. Near the body were several metal objects, any one of which might have been used, but none was linked with the girl's death. Police are recoiled to believing that only a twist of fate or a confessional will unravel the slaying.

The other killing is believed to have been the result of an attempted robbery. Theodore Chey-chuck, restaurant counter man, was found dead in the basement of the restaurant. Police believe that he came upon a robber and was killed in the latter's attempt to escape.

Unsolved thefts and robberies include larceny of a trunk containing \$75,000 in jewelry. It was stolen from a railroad platform and never was recovered. Two holdups are included, one netting \$12,000 to the bandits when two bank employees were stopped on the Boston fish pier and the other, \$10,000, a bank again being the victim. An automobile transporting funds was stopped and the messengers relieved of their burden. A hotel

NEW MARQUETTE TO BE SEEN HERE SOON

Preliminary arrangements for the showing of the new Marquette car, were made here Friday by Rev. W. Johnson, representative of the General Motors company, who was here conferring with O. W. Watson, local dealer for Buick, and future dealer for the new Marquette, a companion car to the Buick line.

Mr. Johnson said that the new car would be on the market about June 1. Watson expressed himself as very pleased with the tentative development foreseen for the Marquette car.

cafeteria yielded \$50,000 in diamonds and jewelry to a bold band of holdup men.

FISHING GREAT IN UMATILLA COUNTY

Sportsmen of Umatilla county and the adjoining territory are experiencing the greatest fishing they have ever known, in the McKay dam which is located several miles from Pendleton. Eastern brook trout by the hundreds are being daily taken from the dam and sportsmen of the Umatilla country regard the place as a second Diamond Lake. In a letter to the state game commission Sol J. Baum of Pendleton reports that fish in large numbers up to 20 inches in length are being caught every day. The commission made its first planting of Eastern brook trout in the dam in 1927. The fry planted were on an average of five inches in length. Subsequent plantings have been made until the waters of the dam abound with the trout.

More plantings will be made this year. One reason given by the commission for the great growth of the eastern

brook is that the dam contains almost an unlimited supply of natural food.

The bear gets the blame from many persons for the crimes of the cougar, according to officials of the state game commission. He is not by nature a killer, and has often times been held responsible for the slaying of deer, when, in fact the animals were killed by cougar. The cougar kills a deer, takes the vital organs of the animal. The bear comes along, finds the kill and feasts upon it. Bruin has been known to kill deer but it was after they were crippled and unable to escape. Unless the bear is extremely hungry it is not his nature to attack other animals.

Your Statesman carrier is a little merchant. He is charged for all the papers he delivers. Failure of a subscriber to pay is loss to the carrier.

More than a Million Western Auto Tires are in daily use!

29 x 4.40 Western Giant RIB-TREAD BALLOON Fully Guaranteed \$6.25

29 x 4.40 Western Giant CENTER TRACTION TREAD Fully Guaranteed \$7.45

29 x 4.40 Western Giant Full Balloon Fully Guaranteed \$5.28

You Judge Other People's Businesses This Way

Why Not Apply Its Moral To Your Own?



Reo Junior Speed Wagon in the Delivery Service of Cooke, Florist, of Washington, D. C.

Second-Class Delivery Means A Second-Class Business In The Public Mind. High-Class Delivery Means A High-Class Business To The Thousands Who See Your Trucks On The Street Every Day

EVERY delivery truck that runs the streets is either a Good Advertisement or a Bad Advertisement for its owner.

Only One Person in 1,000 who sees your delivery on the street ever comes into your place of business. In the eyes of the 999 who never meet you face to face, second-class delivery bespeaks second-class methods. High-class delivery means a high-class business.

That may be fair or unfair. But it is a fact. A fact that you prove to yourself ten to fifty times every day by the trucks you see. Figure it out for yourself.

High Speed, High Power Trucks That Pay For Themselves In Advertising

Cognizant of the tremendous advertising importance of High-Class Delivery Service—Service that looks high-class and that is high-class—Reo, world-leader in high speed, high power and low upkeep commercial transportation.

offers American Business a new era in the haulage field. An era combining utility, flexibility and almost unbelievable endurance with low upkeep and the great factor of favorable publicity.

Models For Every Need

Reo Speed Wagons are built in 13 wheelbase sizes—and in tonnage capacities of 1/2-ton—1 ton—1 1/2 ton—2 tons and 3 tons in wide variety of body styles. 4-wheel, 2-shoe internal hydraulic brakes; 6-cylinders; 7-bearing crankshaft; 4-forward speed transmission; air cushioned seats; full equipment—on all models. Chassis priced from \$895 to \$2,240 f. o. b. Lansing, Michigan.

Call any of the Reo dealers, whose names appear in this advertisement. They will be glad to send a Reo transportation specialist who will prove these facts. Reo Motor Car Company, Lansing, Michigan.

"The Junior Speed Wagon is particularly adapted to service in the department and specialty stores, meat markets, bakeries, food, florist, laundry, cleaning and dyeing and general merchandise fields."

Medium and Heavy Hauling Like Men Have Never Known Before

3 Ton Reo Speed Wagon Chassis

1 1/2 to 3 ton Speed Wagons powered by the new Reo 6-cylinder Gold Crown engine—for passenger car performance, flexibility, speed and economy. 8 wheelbase sizes from 134 to 179 inches. Chassis prices from \$1,295 to \$2,240 f. o. b. Lansing, Michigan.

REO

SPEED WAGON

World-Leader in High-Speed, Low Upkeep Commercial Transportation

Reo Sales and Service
337-341 N. High St. Telephone 975

Our Guarantee Gives You Full Protection

Not only does our liberal MILEAGE WARRANTY cover every "Western Auto" Tire, but your complete and lasting satisfaction is further assured by our GUARANTEE OF ABSOLUTE SATISFACTION FOR THE LIFE OF THE TIRE. This Guarantee is further upheld by prompt and smiling Service at all our conveniently located stores, and by our popular CUSTOMER "IS ALWAYS RIGHT POLICY."

And the number grows! The word has gone 'round among car owners that, besides Quality, Economy and Satisfaction, "Western Auto's" liberal Mileage Guarantee, Service at all "Western Auto" stores, and our popular Customer Is Always Right Policy... are advantages no other organization offers.

Start the Spring Touring Season right—with "Western Auto" tires all around—add new zest to summer outings, and reduce the cost of motoring!

A Tire for Every Car—for Every Use—for Every Purse

SIZE	Wear-well Balloon 10,000-Mile Guarantee	Western Giant Standard Rib-Tread 15,000-Mile Guarantee	Western Giant New Center-Traction 16,000-Mile Guarantee
29x4.40 (4.40-21)	\$ 5.28	\$ 6.25	\$ 7.45
30x4.50 (4.50-21)	6.10	6.95	8.25
29x4.75 (4.75-20)	6.85	8.30	8.95
30x5.00 (5.00-20)	7.65	8.95	10.25
31x5.00 (5.00-21)	7.85	9.35	10.65
30x5.25 (5.25-20)	8.80	10.25	11.80
31x5.25 (5.25-21)	8.95	10.55	11.95
30x5.77 (5.77-20)	10.45	11.80	12.65
32x6.00 (6.00-20)	11.80	13.75	15.60
33x6.00 (6.00-21)	11.95	13.95	15.95
32x6.20 (6.20-20)	17.80
33x6.75 (6.75-21)	21.25

SIZE	Wear-well Cord 10,000-Mile Guarantee	Western Giant Passenger Car Type 14,000-Mile Guarantee	Western Giant Extra Heavy Truck Type
30x3 1/2 Cl. Regular	\$ 4.65	\$ 5.35
30x3 1/2 Cl. Oversize	4.95	5.85	\$ 8.90
30x3 1/2 SS Oversize	5.75	6.95
31x4 . . . SS Oversize	7.95	9.25
32x4 . . . SS Oversize	8.25	9.85	13.85
33x4 . . . SS Oversize	8.95	10.45
32x4 1/2 SS Oversize	10.95	13.65	17.90
33x4 1/2 SS Oversize	11.35	13.95	18.75
30x5 . . . SS Oversize	21.85
33x5 . . . SS Oversize	19.45	23.65

"Western Auto" Service

—A priceless convenience to our customers. Service connections are maintained in all cities where we have stores, so that goods purchased from us may be installed properly, promptly, and at a low flat rate. In many instances, free of all costs. Besides thus saving you money, our Service Departments lend additional value to our guarantee.

More than 150 Stores in the West—
Western Auto Supply Co.
Salem Store 201 N. Com'l. Telephone 796

Tires Mounted FREE

For Even GREATER Savings Trade In Your Old Tires!

They are as good as cash in part-payment on new, fully guaranteed Wear-well or Western Giant Tires, at any of "Western Auto's" more than 150 conveniently located stores in the West.

Whatever Your Size We Have It... Ask for Our Low Prices on Sizes Not Shown

Wasco Tires

30x3 1/2	29x4.40
\$3.98	\$4.78

Wasco Tires 6-ply tires of standard size and weight, new from the mill, and well made. Especially recommended for the motorist who wants to make a minimum investment.

Guaranteed 6000 Miles

Size	Low Price
30x3 1/2	\$3.98
31x4	\$4.78
32x4	\$4.78