

GAS PRICE SET BY LAW HELD ILLEGAL

Tennessee Tries to Place Limit on Dealers But Court Objects

The recent gas war has drawn attention of the motorists to a variety of prices existing for the same grade of gasoline. This variety of prices, coupled with various statements that have been made relative to the high margin of profit made by various persons handling gasoline, has caused much comment among motorists. Numerous efforts have been made in the past to regulate the price of gasoline but it remained for the legislature of Tennessee to pass a law during the 1927 session which established a bureau empowered with the authority to regulate the price and distribution of gasoline. This bureau was to function in much the same manner as a public service commission does with respect to the regulation of public utilities.

The Standard Oil company, and other companies, obtained an injunction from the district court of the United States, middle district of Tennessee, the court holding that the sale of gasoline was not so affected with a public interest as to be subject to price regulation. In so holding the court said:

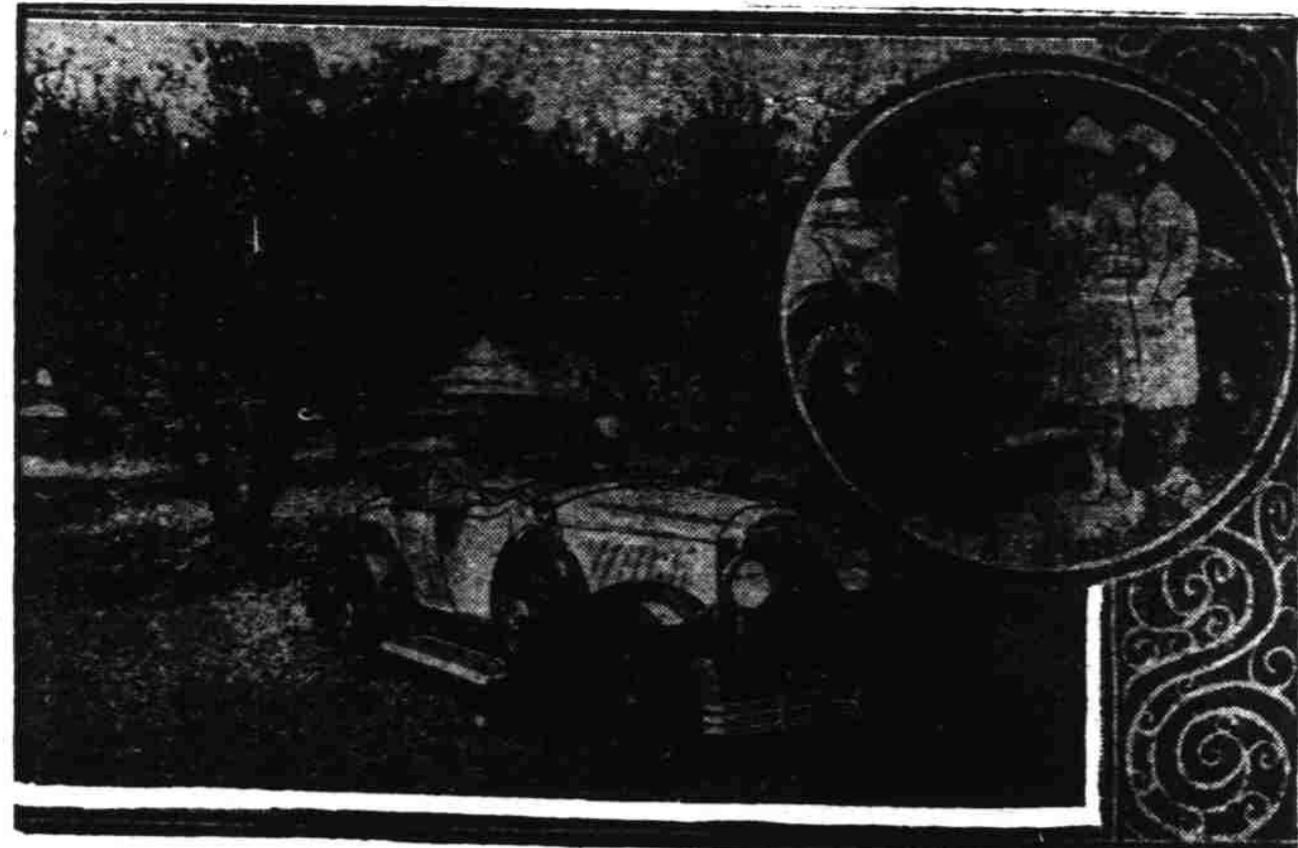
"This act does not purpose and indeed could not be said to be such a measure; it is nothing but an attempt to fix the price at which one may sell or buy gasoline, a commodity, to be sure, in general use, and concededly necessary to the convenience, comfort and well being of the citizens of the state, but not more necessary than many other commodities which are bought and sold within the state."

DOGS TAKE TOLL

Marauding dogs continue to take a heavy toll among Lane county sheep flocks, and animals valued at more than \$1000 were destroyed during April. Claims totaling \$427 have already been approved by the county court.

More than 4000 people gathered at Glendale May 1 for the "lumber jubilee" marking the opening of the new sawmill and the restoration of the city following the disastrous fire of last July.

Old Reliable Prune Fills New Role



Prospects of a good prune crop this year, together with a concerted drive by hospitals and medical authorities aimed to promote prune consumption as a health aid, brings high optimism to orchardists this spring. Surveying the crop situation in California in 1929, experts took a Buick sport-roadster to do the job. San Jose hospital has recently adopted prunes as major part of the diet for that institution.

Bits of News Gathered From All Parts of the Great State of Oregon

Unfavorable weather conditions have so far cost the state game commission approximately \$25,000. Many anglers who have formed the habit of fishing immediately after the season opens have been held up in the purchase of licenses due to the fact that the streams of the Willamette valley and other sections have been unfavorable for angling. Undoubtedly when the weather improves these sportsmen will take advantage of the situation and purchase their licenses. One thing that may be said in favor of the bad weather is that the fish will have the advantage of almost two months of growth before they are taken from the streams.

GAME FARM EXPERT

That the Oregon State Game commission is recognized as efficient in its work of game propagation is shown in the fact that

the commission of Montana has requested the service of "Gene" Simpson, game farm superintendent for a period of two or three weeks to work in an advisory capacity. Mr. Simpson will go to Montana and superintend the establishment of a modern game farm. Last year the California commission called upon Mr. Simpson to superintend the construction of one of the most important game farms of the country. Other states have sent men here to work under the Oregon commission and learn the work of game propagation. Mr. Simpson has written the only general recognized work on the raising of Chinese pheasants.

Reports from the state game farms at Corvallis, Eugene and Pendleton show that up to April 30, eggs were gathered as follows: Chinese pheasants, 6356; wild turkeys, 507; guinea fowl, 525;

and Mongolian pheasants 398. The Hungarian partridge has not started laying. This season many more Mongolian pheasants will be raised than heretofore as it has been shown that they thrive in Eastern Oregon where plantings have been made.

TEST "CHINA'S" TASTES

Experiments being carried on at Oregon State College under the supervision of the state game commission to determine the food habits of Chinese pheasants is being watched by other states. The experimental work has been un-

der way for the past ten months and has two more months to go when a report will be made. Ten representative agricultural counties of Oregon are the scenes of the work. So far it has been learned that while the pheasants eat a certain amount of cereals they also destroy pests that do damage to crops, and feed on weed seeds that if given growth would be destructive to the farmer. Michigan and other state game commissions have asked for reports on the work now being carried on.

The hatchery department of the Oregon State Game Commission is making extensive improvements in several of its hatcheries. Construction work is going on at the Bandon hatchery as well as at the Fall River plant. New ponds are being made ready at Canyon Creek hatchery and similar work is in progress at the Union hatchery. Better results have been obtained at the Union hatchery during the last year than ever before. Warm water was obtained last fall from a nearby hot spring and put in the breeding tanks and ponds. In this way the commission was able to keep the water at an even temperature and the growth of the fish increased almost twice as fast as it did under conditions where the water was of fluctuating temperatures.

"BE LAW ABIDING" URGE

"Don't make it necessary for the warden to arrest you." This is the advice of Harold Clifford, state game warden to those who do not always regard the game protective laws. "Don't catch more than the legal limit. Don't angle in closed streams. Read the laws carefully and obey them. Thus help to conserve one of Oregon's greatest resources."

Read the Classified Ads.

Public's Advice Sought In Form Of School Study

INDIANAPOLIS.—(AP)—The public's advice in mapping out an up-to-date course of study for schools is being asked by the state

superintendent of public instruction in letters sent over the state. Nomadic workers, drifting with their families from place to place, from farm to city and back, create a need for uniformity in schools, according to Virgil Stinebaugh, director of high school inspection. Children taken out of one school easily can make adjustments in another if courses are similar.

"It is not intended, however, to restrict initiative of local school officials or make all schools conform to a set standard," Stinebaugh said.

A second dividend of 25 per cent was paid last week to the depositors of the failed Farmers' and Stockowners' bank of Vale, bringing the dividends so far paid to 49 per cent.

Service—

Call 471 if you have tire trouble—Our service car will be on hand in a few moments.

Equipment—

Our well equipped Shop can handle any tire repairing or vulcanizing quickly and with guaranteed workmanship.

Quality Products—

Seiberling Tires are built of the best materials obtainable and we sell them with a protection against all road hazards for a year.

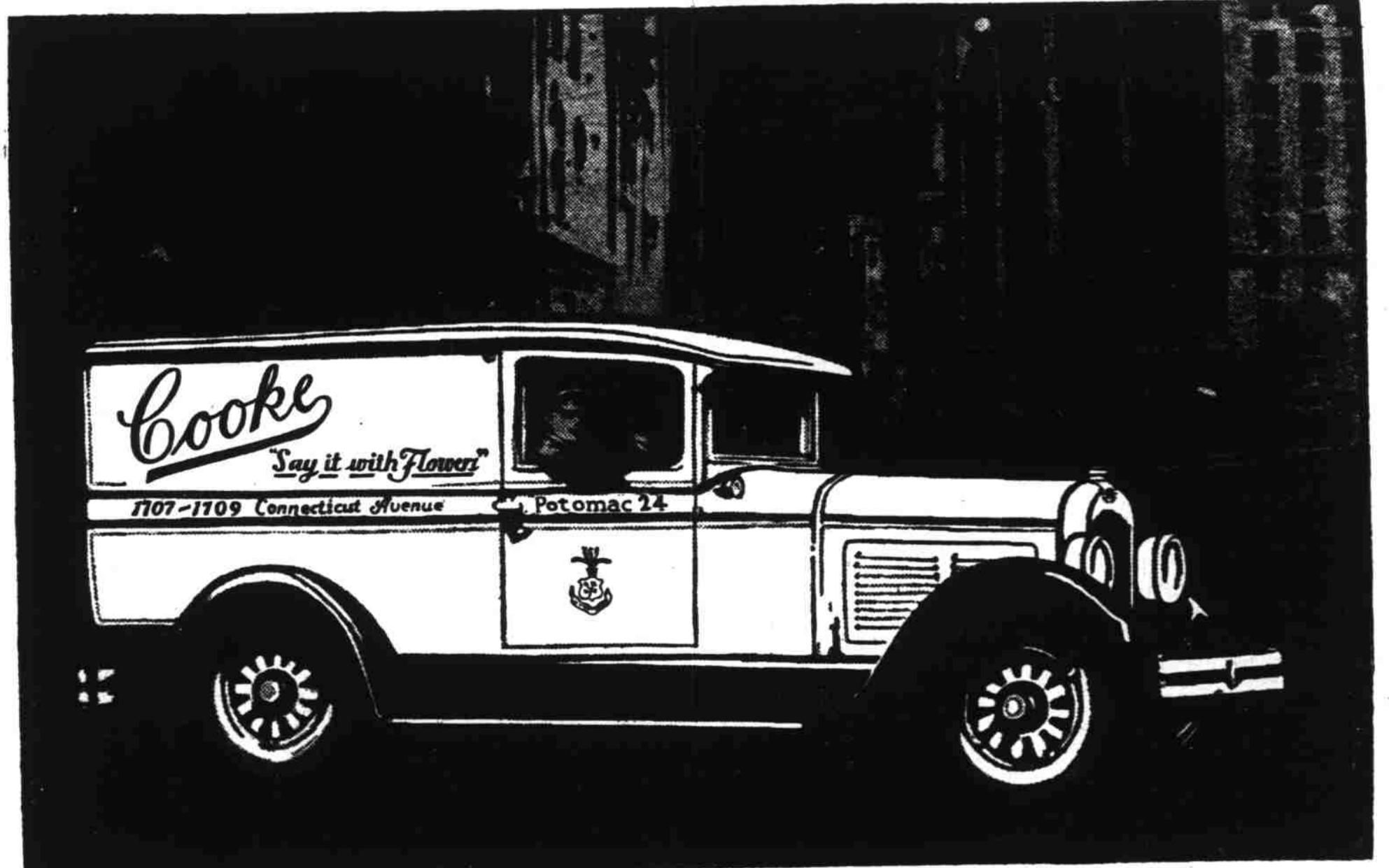
ZOSEL'S TIRE SHOP

198 S. Commercial

Telephone 471

You Judge Other People's Businesses This Way

Why Not Apply Its Moral To Your Own?



Reo Junior Speed Wagon in the Delivery Service of Cooke, Florist, of Washington, D. C.*

Second-Class Delivery Means A Second-Class Business In The Public Mind
High-Class Delivery Means A High-Class Business To The Thousands
Who See Your Trucks On The Street Every Day

EVERY delivery truck that runs the streets is either a Good Advertisement or a Bad Advertisement for its owner.

Only One Person in 1,000 who sees your delivery on the street ever comes into your place of business. In the eyes of the 999 who never meet you face to face, second-class delivery bespeaks second-class methods. High-class delivery means a high-class business.

That may be fair or unfair. But it is a fact. A fact that you prove to yourself ten to fifty times every day by the trucks you see. Figure it out for yourself.

High Speed, High Power Trucks That Pay For Themselves In Advertising

Cognizant of the tremendous advertising importance of High-Class Delivery Service—Service that looks high-class and that is high-class—Reo, world-leader in high speed, high power and low upkeep commercial transportation, offers American Business a new

era in the haulage field. An era combining utility, flexibility and almost unbelievable endurance with low upkeep and the great factor of favorable publicity.

Models For Every Need

Reo Speed Wagons are built in 13 wheelbase sizes—and in tonnage capacities of 1/2 ton—1 ton—1 1/2 ton—2 tons and 3 tons in wide variety of body styles. 4-wheel, 2-shoe internal hydraulic brakes; 6-cylinders; 7-bearing crankshaft; 4-forward speed transmission; air cushioned seats; full equipment—on all models. Chassis priced from \$895 to \$2,240 f. o. b. Lansing, Michigan.

Call any of the Reo dealers, whose names appear in this advertisement. They will be glad to send a Reo transportation specialist who will prove these facts. Reo Motor Car Company, Lansing, Michigan.

*The Junior Speed Wagon is particularly adapted to service in the department and specialty store, meat markets, bakeries, food, florist, laundry, cleaning and dyeing and general merchandise fields.

Medium and Heavy Hauling Like Men Have Never Known Before



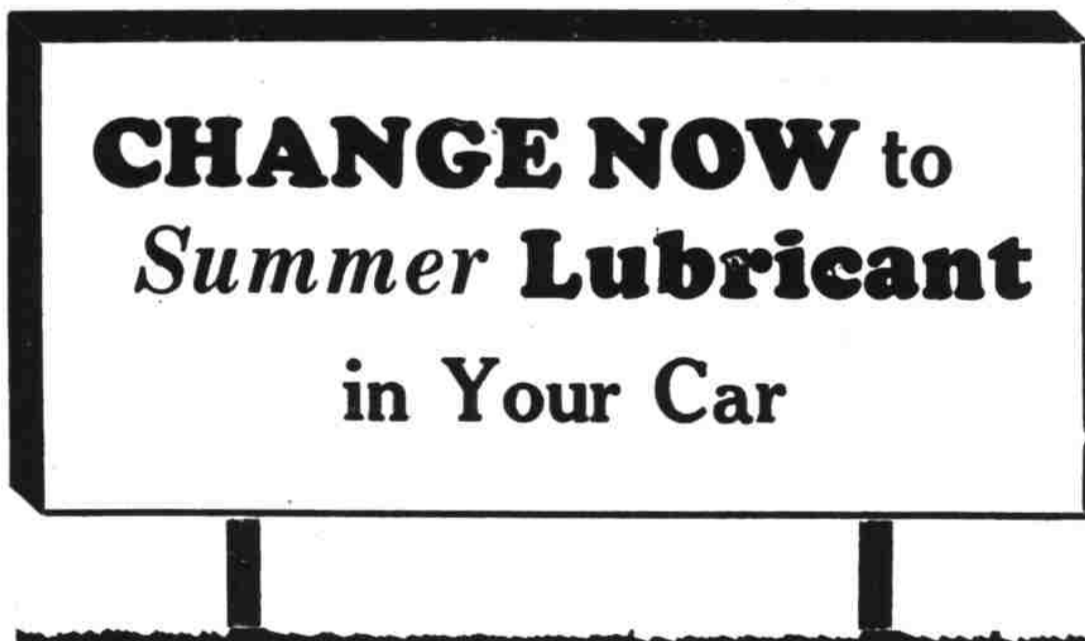
3 Ton Reo Speed Wagon Chassis

1 1/2 to 3 ton Speed Wagons powered by the new Reo 6-cylinder Gold Crown chrome nickel alloy Engine—for passenger-car performance, flexibility, speed and economy. 8 wheelbase sizes from 134 to 179 inches. Chassis priced from \$1,295 to \$2,240 f. o. b. Lansing, Michigan.



SPEED WAGON World-Leader in High Speed, Low Upkeep Commercial Transportation

Warning to Motorists



Avoid Rasing, Grinding Gears
80% of all Summer Repair Bills

The time is here to have that worn out winter type Gear Lubricant flushed out and removed.

If you don't trouble is sure to come.

That's the first thing to do. Then at the same time have them re-filled with Alemite Summer Gear Lubricant.

It is specially compounded for the purpose, is heavier, clings closely to tight gears.

No labor charge is made for the flushing and cleaning. You are charged only for the new grease.

The Station with a clock



Open 8,760 hours each year

"Jim" SMITH & WATKINS "Bill" THE STATION WITH A CLOCK

Cars Called For and Delivered Phone 44

Reo Sales and Service

337-341 N. High St.

Telephone 975