

## WRITTEN GUARANTEE WITH ALL USED CARS

New Policy Adopted by  
Oakland Motor Co.;  
Applies 30 Days

Another progressive step recently taken by a prominent automobile manufacturer toward better business methods in the merchandising of used cars, came to light here today when the Oakland Motor Car company announced adoption of a national policy under which all Oakland-Pontiac dealers will be asked to furnish a written guarantee with all reconditioned used parts.

Under terms of the guaranty, parts are furnished free to replace any found defective during the first 750 miles of driving provided the mileage is run up within 30 days after the sale. The car also may be returned within 48 hours after the purchase if it proves unsatisfactory and the full purchase price applied to any other car, new or used, of equal or greater value in the dealer's stocks.

A written guaranty printed on lithographed bond paper is issued by the dealer to the purchaser at the time of the sale, while all cars carrying the guaranty also have a windshield sticker on which is printed, "Reconditioned Guaranteed Good Will Used Car."

The object of the new plan, according to M. L. Buck, manager of the used car department, is to provide the purchaser with concrete evidence of the good faith of the dealer who makes the sale.

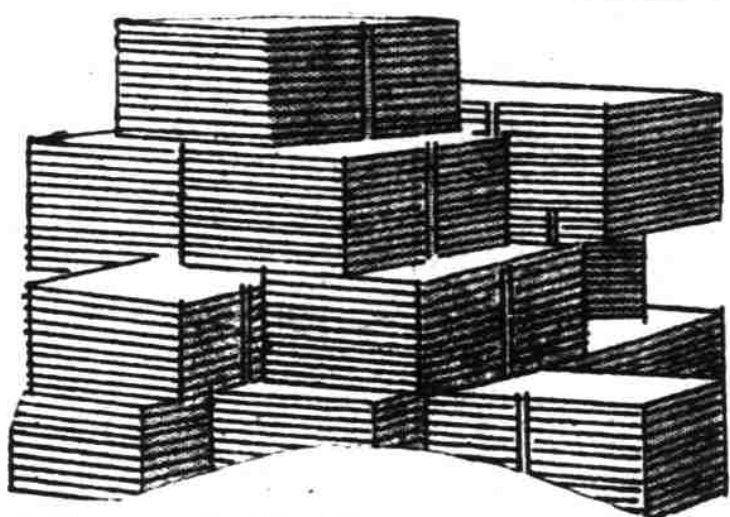
"Many of our reconditioned cars are priced within the range of the cheapest new car," Mr. Buck stated. "If the money were invested in the small new car the purchaser would receive a standard warranty with it. In making a similar purchase of a good used car he is entitled to a like measure of protection."

## HIGH COMPRESSION DEMANDS RIGHT OIL

(Continued from page 9)  
let Six. To obtain high compression, combustion chamber space is of necessity made smaller. It is natural then, of course, that we must use fuels and lubrications that eliminate as far as possible hard carbon deposits. A soft carbon will, to a great extent, automatically slough away, leaving the combustion chamber at approximately the original size of factory design."

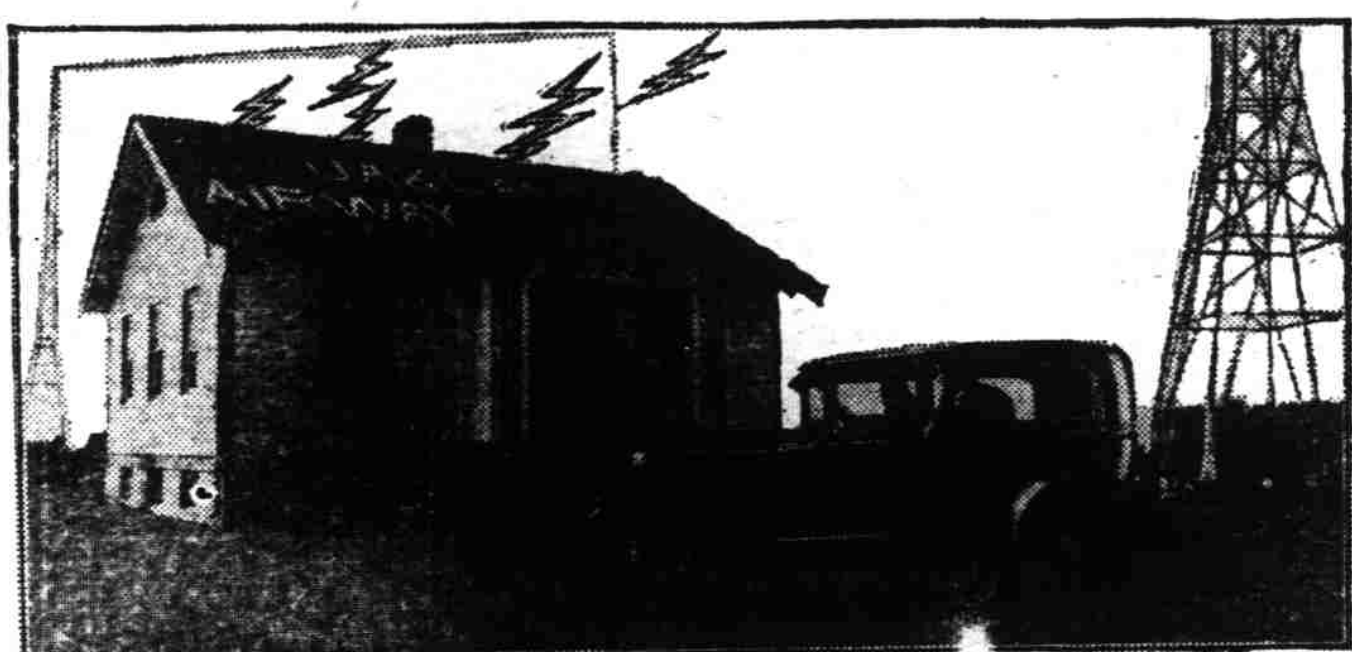
### THE CARE OF TREES

Do not leave the soil heaped up around newly planted trees, shrubs or evergreens. Rather leave a depression around the plant, cupping the soil, so to speak, so it will receive and retain the water supplied by rainfall rather than letting this run off away from the plant. Trees set out on lawns should not have the grass or sod grow right up to the tree. A space about the tree should be left open to the size of the hole dug when planting the tree, and the top soil should be kept cultivated all summer just as one would cultivate a garden. The depression will serve for catching and holding the water, and the cultivation will greatly aid in aerating the soil and in encouraging the growth of the tree.



**EL REY**  
*Roofing  
Shingles*  
and Asphalt Roofing Products  
—Also—  
**LUMBER**  
and Building Materials  
**GABRIEL** Powder & Supply Co.  
Union and Capitol Streets  
Telephones 738-2243

## Weather Reports Now Phoned to Planes



The United States Department of Commerce is in readiness to operate the first radio telephony station on the Pacific coast. This station will report hourly, by phone, the weather conditions to planes in flight. A new Chevrolet Six, with N. W. Bliss, the manager of the station, and Lt. Franklin Rose, is shown in the foreground.

## HOW'S THE ROAD?

Answers Framed in Weekly Report From Oregon State Highway Commission

Already blue skies and the charm of Oregon's great outdoors is calling to the tourists of the state and the attraction of the highways and the byways of the state loom large. This week's report on the condition of the road is:

**Pacific Highway**  
Portland-Oregon-Oregon City-Salem-Albany-Harrisburg-Junction City-Eugene-Cottage Grove-Grants-Pass-Medford-Ashland-California State Line: Paved.

**West Side Pacific Highway**  
Portland-Newberg-McMinnville-Corvallis-Junction City-Eugene: Paved.

**Columbia River Highway**  
Astoria-Rainier-St. Helens-Portland: Paved. Portland-Hood River-The Dalles: Paved. The Dalles-Arlington-Umatilla: Oiled macadam.

**Old Oregon Trail**  
Umatilla-Pendleton-La Grande-Baker-Huntington-Ontario: Oiled macadam.

**Roosevelt Coast Highway**  
Clatsop, Tillamook and Lincoln Counties

Astoria-Seaside: Paved.  
Seaside-Mohler-Brighton-Lake Lytle-Rockaway-Garibaldi-Bay City-Wilson River: Macadam.  
Wilson River-Tillamook-Beaver: Part paved, part macadam.

Beaver-Hebo-Neskowin-Devils Lake-Siletz River-Otter Rock-Newport: Macadam.

**Roosevelt Coast Highway**  
Douglas, Coos and Curry Counties  
Reedsport-Lakeside-North Bend: Macadam. Free ferry across Coos Bay, 7 a. m. to 11 p. m. Road from Drain to Reedsport open and in fair condition.

**North Bend - Marshfield - Coquille: Paved.**  
Coquille-Bandon-Port Orford-Gold Beach-Brookings-California State Line: Macadam.

Free ferry across Rogue river at Gold Beach, 7 a. m. to 11 p. m.  
**Coos Bay-Roseburg Highway**  
Junction Pacific Highway-Myrtle Point-Coquille: Macadam.

**Green Springs Highway**  
Junction Pacific Highway-Keno-Klamath Falls: Macadam.

**Siuslaw Highway**  
Junction Pacific Highway-Cheshire-Goldson-Blachly-Rainrock-Mapleton: Macadam.

Mapleton-Florence: Dirt road. Impassable in wet weather.  
**Corvallis-Newport Highway**  
Corvallis-Philomath-Eddyville-Toledo-Newport: Macadam.

**Tualatin Valley Highway**

**Bonanza-Lorenz Mill:** Old road unsurfaced grade, soft after rain.  
**Lorenz Mill-Beatty-Lakeview:** Macadam.

**Fremont Highway**  
Bend-Lapine: Oiled macadam.  
Lapine-Silver Lake-Summer Lake: Unimproved dirt road.

**Summeh Lake-Paisley:** Nine miles, macadam, 18 miles fair dirt road.

**Lakeview-New Pine Creek-California State Line:** Partly macadamized, balance fair dirt road.

**Central Oregon Highway**  
Bend-Burns: 12 miles macadam 127 miles fair dirt road.

**Burns-Crane:** Macadam. Burns-Vale via Drewsey: Earth road, rough. Make inquiry at Vale or Burns regarding snow conditions before attempting trip.

**Sherman Highway**  
Arlington-Condor-Fossil-Spray-Dayville-Mt. Vernon-John Day-Prairie City-Austin-Unity-Ironside-Cow Valley-Brogan-Jamieson-Vale-Ontario: Macadam. Oiling operations under way between Condor and Fossil.

**Redmond-Prineville-Mt. Hell:** Macadam.

**Mitchell-Antone-Dayville:** Dirt road, rough but passable. Through travel advised to take route via Service Creek.

**Crater Lake Highway**  
Medford-Trail-Prospect-Union Creek-Port Klamath Junction: Macadam. Closed from Prospect across Crater Lake National Park on account of snow.

## Mutual Savings and Loan Association

A Salem Institution Organized in 1910

Place your savings with us  
Let us finance your home on weekly or monthly payments  
142 South Liberty Street

## VICK BROS. GOOD WILL USED CARS

- 1927 OAKLAND 4-DOOR SEDAN—  
This car has had the best of care; has run but few miles; equipped with bumpers, snubbers, S. & M. fog light, new tires, new Willard battery; 1929 license and in A-1 condition in every respect ..... \$785
- 1928 CHEVROLET COACH—  
80% new original rubber; car runs and performs like new; real value at ..... \$525
- 1927 WHIPPET COACH—  
Equipped with bumpers, snubbers, new tires; finish 90% new; A-1 throughout ..... \$475
- 1927 STAR 6 COUPE—  
This car is in good condition throughout and has all the transportation left in it ..... \$445
- 1925 OVERLAND COUPE—  
New Duco finish; 90% new rubber; upholstery A-1; Exceptionally good running car ..... \$245
- 1925 CHEVROLET TOURING—  
Equipped with bumpers; snubbers, all metal trunk, motor, spotlight; top curtains and upholstery A-1; motor overhauled; tires 85% new ..... \$225
- 1926 OVERLAND 4 COACH—  
Fully equipped; new Duco finish; 70% new rubber; motor overhauled with light weight pistons ..... \$275
- 1924 PAIGE 66 4-DOOR SEDAN—  
Fully equipped; 75% new rubber; new battery; mechanically in fine condition; any one wanting a large car, cannot afford to pass this one up at ..... \$295

Phone 1841

High at Trade

**Vick Brothers**  
The House That Service Built

## PLYMOUTH AUTOS WELL RECEIVED

Featuring the full line of Plymouth motor cars with important mechanical improvements, the national display and demonstration conducted by Plymouth dealers throughout the country is creating unusual interest. Advice from the Detroit offices of the Plymouth dealers throughout the country is creating unusual interest. Advice from the Detroit offices of the Plymouth Motor corporation indicate that large and enthusiastic throngs are being attracted to these displays of Chrysler-built Plymouth Motor cars.

Many of the mechanical improvements are to be found in the engine where a longer stroke and greater piston displacement, longer connecting rods, heavier crankshaft, larger main bearings, and improved lubrication have been used to produce greater improved acceleration and a remarkable degree of smoothness.

## DE SOTA SALES UP 100 PER CENT

(Continued from page 9)  
during March than in the previous month and the increase of March country.

De Soto's present announcement shows 101.01 per cent more new cars were sold by dealers

over January business approximately 110 per cent.  
"For four successive weeks in March, all previous delivery records were broken," said L. G. Peed, general sales manager for the De Soto corporation. "Dealers made more new car deliveries last month than in any other month since the De Soto was introduced. Our business for the week ending March 30 was almost double that of the first week in the month and each succeeding week found sales reaching new high peaks."



Health  
As Well As  
Appearance  
Demands  
Frequent  
Cleaning

If you could see how the dust and dirt your garments can absorb in say three months, you would have them cleaned more often. We call and deliver anywhere.

**JAPANESE HAND  
LAUNDRY AND  
CLEANERS**  
We Call and Deliver  
Telephone 753

## The Rains Will Soon be Over

So let's get the old Bus tuned up for summer mileage!

## Introductory Offer

—FOR—

## One Week Only

April 22-27 Inclusive

We will grind valves and tune motor of any \$2.00 light four for

Corresponding Reduction on other models.

We have a complete AUTO SERVICE

Quaker State Motor Oils — Shell 400, The Dry Gas  
Full Line of Accessories — Fisk Tires and Tubes  
Willard Batteries — Oil and Greasing

Guaranteed Repairing, Towing, Wrecking  
Road Service Phone 1798

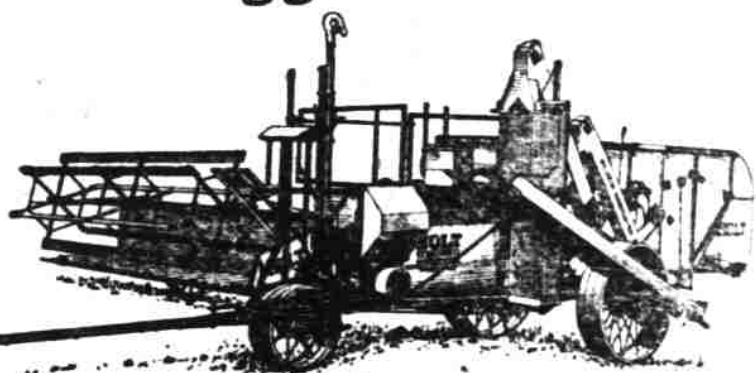
## Harris Auto Service

"We Serve You Anywhere"

Phone 1798 2390 Fairgrounds Road

We call for and deliver your car. Try us once and you'll call again.

## HOLT Combined Harvesters 'COMBINE' Your Grain for Bigger Profits



## THE 'HOLT' WAY

"HOLT" Combined Harvesters cut the standing grain, thresh it, separate it, clean it, and deliver it ready for market, in one combined series of operation.

They employ the separating principle of constant and vigorous agitation—used in "HOLT" combined for 40 years—THE PRINCIPLE THAT HAS MADE THE "HOLT" FAMOUS AS A GRAIN SAVER.

"HOLT" Combined Harvesters are light weight, yet sturdy—stripped of all excess weight, scientifically trussed and braced. Practically all-steel construction. Bearings are of anti-friction type. Lubrication by the quick, handy, grease gun system.

The "HOLT" line includes a size and type for every harvesting condition—level land models and side hill models. Sacking equipment or big capacity built-in steel bulk grain bin. Cutting widths from 12 to 20 feet.

AND—

the crew required is small—ONE MAN OPERATES THE HARVESTER. A light tractor will pull it—the "CATERPILLAR" is an ideal companion.

## You May Examine This "Holt" Combined

AT OUR  
PORTLAND SALESROOM, 345 E. Madison  
or for a short time at  
BRIEDWELLS GARAGE, McMinnville, Oregon

A new "HOLT" is on display—it has all the latest improvements—you are invited to look it over—Examine it from drawbar to straw shroud. (Or a descriptive booklet will be sent on request.)

The Purchase of a 'HOLT' is a Real Investment

## Loggers & Contractors Machinery Company

DISTRIBUTORS  
"HOLT" COMBINED HARVESTERS  
"CATERPILLAR" TRACTORS

345 E. Madison  
Portland

345 Center  
Salem



## Introductory Sale!



New Low Prices  
to introduce Goodyear's latest  
achievement in tire-building:

The New Improved  
GOODYEAR  
Pathfinder Tread  
SUPERTWIST  
CORDS

Never Before Such Tires  
at Such Low Prices!  
Guaranteed for Life against Defects

BALLOON	
29x4.40	\$ 6.55
30x4.50	7.25
30x5.00	9.25
31x5.25	11.15

HIGH PRESSURE	
30x3 1/2	\$ 5.25
31x4	9.75
32x4 1/2	13.95
30x5 Heavy Duty	23.25

Rims cleaned and straightened and new tires applied without charge

Only because Goodyear builds millions more tires than any other company, is it possible to announce these New Improved Pathfinders at still lower prices. See them and you'll never again bother with "cut-price" bargains or send away for tires. You'll admire the handsome, deep-cut, tough and rugged new Pathfinder Treads which grip the road better than many highest priced tires. Let us point out their other quality features—let us prove to you the superiority of their SUPERTWIST Cord construction. Never before has a small price bought such big value. We have your size ready—come get it!

Trade In the Mileage Left in Your Present Tires—Ride Safely Without Delay All Winter

**Frank Doolittle**  
NORTH COMMERCIAL AT CHEMEKETA