

OAKLAND HEAD SEES RECORD PROSPERITY

Vice President in Charge of
Sales Makes 16,000
Mile Road Trip

Completion of a 16,000 mile trip to America's leading merchandising centers has definitely settled in the mind of W. R. Tracy, vice president in charge of sales of the Oakland Motor Car company, that the United States has embarked upon what bids fair to prove its year of greatest prosperity.

Particularly is this true of the automobile industry, generally accepted as the most sensitive barometer of business, of which Mr. Tracy said that it shows every promise of eclipsing any previous year by a sizeable margin.

On the road almost continuously for two months, Mr. Tracy visited 150 Oakland-Pontiac dealers in all parts of the country, in addition to nine districts and three regional offices, touching at such representative trading areas as New York, Los Angeles, Kansas City, Seattle, Dallas, Chicago, Memphis, St. Louis, San Francisco, etc.

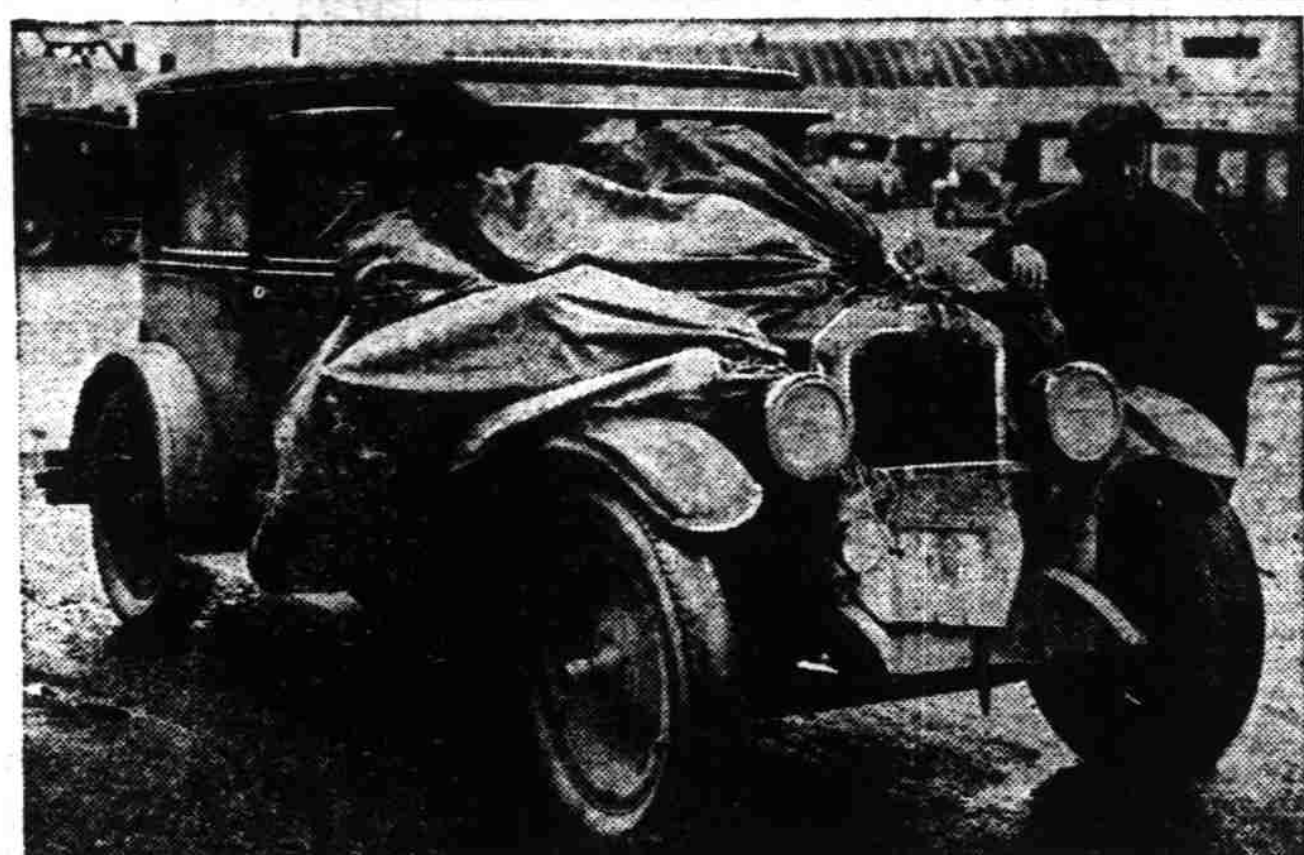
"I have never seen the morale of our dealers so high as at present," said Mr. Tracy. "In the entire country I found no complaints about business and discovered nothing but optimism."

"The prosperity of the nation is apparently general, both industrial and agricultural districts being in good condition. In the south a good cotton year has left its mark and the industrial development of that section is coming along at a surprisingly rapid rate."

"With February setting a new high output figure for the month in the industry, despite weather that affected sales adversely in many sections, we may look for records to topple consistently when warm weather opens up the rush of spring buying. Our own organization bettered last February by 3,000 units and more than trebled our output in the same month of 1927, while in March we have launched upon schedules that I believe will establish a new high record for any one month in our history."

"In addition to a particularly bright outlook for domestic sales, a greatly expanding overseas market will aid in shattering production figures of other years. January exports of automotive products were valued at \$47,000,000 or fifty per cent higher than in the previous year, and twenty per cent higher than in December."

All in a Day's Work for This Car



Jack Thurston, mail carrier of Glacier, Wash., and his Oldsmobile loaded with 27 mail sacks, starting on his daily trip. Thurston has driven his Oldsmobile more than 120,000 miles in two years and 3 months.

With this proportion of gain continuing, we may soon expect to be talking of two and three million 'export car' years.

"Dealers whom I visited were pleased over the year's outlook because the public everywhere seems to be content with the present order of prosperity and confident that it will continue. The public is what might be termed 'buying minded'."

"Dealers also are on a more stabilized basis this year, than heretofore. They are receiving from the progressive manufacturer intelligent help in merchandising their used cars, in accounting, service and shop work, and other vital phases of their business. Our own organization was also particularly happy over the public reception given the new Oakland and Pontiac Sixes, and we look forward to a record year."

BACK TO CALIFORNIA
HUBBARD, April 19.—Mr. and Mrs. Everett Holden of Charleston N. H., are visiting at the home of Mr. Holden's sister, Mrs. H. E. Adams of Hubbard. Mr. and Mrs. Holden are returning to their home after spending the winter at Hemosa, Calif. They have visited many places of interest in the west during their stay on this coast.

5 LAST SHIPS SOLD
WASHINGTON, April 19.—(AP) The Antietam Steamship corporation of Philadelphia, was high bidder today for the five remaining shipping board tankers.

MORE ROOM FOUND IN NEW WHIPPETS

Engineers Work for Over a
Year to Perfect Interior Comforts

For more than a year prior to the public presentation of the new Superior Whippet Fours and Sixes Willys-Overland designers and body experts were working out plans to provide a car that would establish a new conception of roominess and comfort in the interiors. These well laid plans find their culmination in the introduction of the new Whippet models which are definitely characterized by extra head room, leg room and elbow room.

With an increased wheelbase in both the four and six cylinder models to work from, the designers took advantage of every available inch of space. This resulted in production of the present Whippet Fours and Sixes which provide maximum roominess for driver and passengers.

The seats of both Whippets are wider than those of the former models, deeply upholstered and scientifically designed to fit the natural body curves. Even with three passengers in the rear seat of the sedan or coach the room provided enables each one to en-

joy restful, relaxed positions at all times.

The use of shubbers, oversize balloon tires and the increased spring length, both front and rear, further materially enhances the riding qualities of these cars.

Several changes in design of the interiors have made for increased comfort and ease of operation for the driver. The distance from the brake and clutch pedals and from the dash to the front seat have both been increased over the dimensions in the earlier models.

The use of the new "Finger-Tip Control," which enables the driver to start the engine, operate the lights and sound the horn from a single button in the center of the steering wheel, is another convenience that adds to the comfort of driving.

The use of engines of higher compression in both the fours and sixes, which provide a better power and speed performance, are also included in the features which have established a dominant position for these cars in their respective fields.

DETECTIVES FOUND
Fake detectives found out easily where there were gambling rooms and loose rooming houses in Portland and worked the game of protection. It seems difficult for the regular police force to make these discoveries. That is strange, but nevertheless true.—Woodburn Independent.

The Statesman welcomes news phoned to its news department. The number is 500.

EASIER CONTROL TO AID WOMAN DRIVER

Willys-Overland Sets New
Standard With "Finger
Tip" System

It was but a few years ago that the number of women drivers was almost negligible and little or no consideration paid them in connection with the design and construction of automobiles. But those times have changed in recent years with the number of women drivers increasing by tens of thousands each year.

And with that change manufacturers of automobiles consider ways and means to design and equip their products in such a manner that they meet the desires of the fair sex. This consideration does not apply only to the body design and its appointments but to mechanical features as well. These include such features as will make driving a pleasure for women rather than impose on them such duties as will require the strength and mechanical ingenuity of a man.

Notable among these early advancements was the electric self-starter which antedated the old practice of cranking the engine. This was considered the last word in driving convenience until the Willys-Overland company adopted the new "Finger-Tip Control," which places at the finger tips of the driver all the functions of starting the motor, operating the lights and sounding the horn without changing the driving position. This is accomplished through a single button conveniently located in the center of the steering wheel on all the new

Willys-Knight Sixes as well as all other motor cars built by the Toledo manufacturer.

Through the employment of a new steering gear construction the Willys-Knight Six will be popular with women drivers because of its ease in handling. Not only does it require a minimum of physical effort in steering, but in parking women are not required to exert great effort in swinging the wheels from one position to another.

The use of wire wheels with a spare wheel mounted on the right forward fender in a well is another advantage that appeals both to men and women drivers. No longer is it necessary in case of a flat tire to go through the many operations of taking the rim from the wheel and then adjusting the rim and tire of the spare in its place. By merely jacking up the wheel with the damaged tire, all that is necessary is to replace the entire wheel with the spare wheel and drive on.

If your Statesman is not on the porch by 6:30 o'clock telephone 500 and one will be sent you promptly.

O. S. C. MAN WINNER IN PAIGE CONTEST

Leo Bryan Price, Yale university, has been adjudged the winner of the \$1,000 prize in the college drama contest sponsored by the Graham-Paige legion, an honorary organization of employees of the motor car company. Price, who resides at 195 East 36th street, Los Angeles, completed his course at Yale last June.

Grover A. Whalen, police commissioner of New York City; Zoe Atkins, one of America's best known dramatic writers; and Norman-Bel Goddard, the noted artist and designer, were the judges of the contest, which sought to obtain the best dramatization of the spirit of the Legion, and its ideals of honor, integrity and unity of purpose. There were 67 entrants from colleges in America and Europe and the manuscripts submitted included plays, sketches, pageants and nearly all other forms of dramatic expression.

The ten additional awards of \$100 each were allotted by the judges to the following students:

Baylor university, Waco, Texas Mrs. Felicia Applewhite, a resident of Canyon, Texas.

University of Pittsburgh—Miss Martha Alice Brown, 5373 Beeler street, Squirrel Hill, Pittsburgh, Pa.

Southwestern college, Winfield, Kan.—Claude Keltner, 1507 East Second avenue, Winfield.

Oregon Agricultural college, Corvallis—William King, Corvallis.

Marquette college, Marquette, O.—Paul E. Sheldon, Marquette.

Mount St. Joseph college, Chestnut Hill, Philadelphia—Miss Miriam Spivack.

DISTURBS BUSINESS
The sooner Mexico returns to stability the sooner she will furnish a market for American products—including lumber from the Pacific coast. War is a great disturber of business.—Roseburg News Review.

Classified advertising in the Oregon Statesman brings results.



JOE WILLIAMS
Service That Satisfies

A Full Page of Advertising

Condensed to 3 Words

"Service That Satisfies"

JOE WILLIAMS

The Willard Battery Man

Center & High

Phone 108

"Western Auto's" Semi-Annual New Customer TIRE SALE

is here again—with Greater Savings for every motorist...

Spring is here... Take advantage of this timely NEW CUSTOMER TIRE SALE and start the season with new, dependable tires all around.

Thousands of motorists will avail themselves of this great "Economy Opportunity" to become acquainted with the benefits of "Western Auto" Savings and Service... Thousands of car owners will join the throngs of our old friends who will buy their favorite tires at even more substantial savings than usual... adding greater impetus to the tide of favor that will push the total of Western Giant and Wear-well purchases by car owners this year to well beyond even last year's huge record total...!

Look at these LOW SALE PRICES... remember our Trade-In Allowance... and Save on Fully Guaranteed "Western Auto" Tires today!

This Liberal Guarantee Means Absolute Satisfaction For You

Not only does our liberal MINIMUM MILEAGE GUARANTEE cover every "Western Auto" Tire, but your complete and lasting satisfaction is further assured by our GUARANTEE OF ABSOLUTE SATISFACTION FOR THE LIFE OF THE TIRE. This Guarantee is further upheld by prompt and smiling service at every one of our more than 150 conveniently located stores... and by our well known and popular CUSTOMER IS ALWAYS RIGHT policy.

A Tire for Every Car—for Every Use—for Every Purse

SIZE	Wear-well Balloon 14,000-Mile Guarantee	Western Giant 15,000-Mile Guarantee	Western Giant Extra Heavy Tread Type
29x4.40 (4.40-21)	\$ 4.98	\$ 5.94	\$ 6.97
30x4.50 (4.50-21)	5.79	6.60	7.84
29x4.75 (4.75-20)	6.49	7.88	8.50
30x5.00 (5.00-20)	7.27	8.50	9.74
31x5.00 (5.00-21)	7.46	8.88	9.95
30x5.25 (5.25-20)	8.36	9.74	11.21
31x5.25 (5.25-21)	8.50	9.95	11.35
30x5.77 (5.77-20)	9.93	10.97	11.95
32x6.00 (6.00-20)	11.21	12.95	14.82
33x6.00 (6.00-21)	11.35	13.25	15.15
32x6.20 (6.20-20)	15.44	16.91
33x6.75 (6.75-21)	19.81	20.19

SIZE	Wear-well Cord 10,000-Mile Guarantee	Passenger Car Type 14,000-Mile Guarantee	Western Giant Extra Heavy Tread Type
30x3 1/2 Cl. Regular	\$ 4.42	\$ 4.97
30x3 1/2 Cl. Oversize	4.70	5.56	\$ 8.45
30x3 1/2 SS Oversize	5.46	6.60
31x4 SS Oversize	7.55	8.79
32x4 SS Oversize	7.84	9.36	13.16
33x4 SS Oversize	8.50	9.93
32x4 1/2 SS Oversize	10.40	12.97	16.95
33x4 1/2 SS Oversize	10.78	13.25	17.81
30x5 SS Oversize	20.76
33x5 SS Oversize	18.48	22.47

"Western Auto" Service
—A priceless convenience to our customers. Service connections are maintained in all cities where we have stores, so that goods purchased from us may be installed properly, promptly, and at a low, flat rate... in many instances, free of all costs. Besides thus saving you money, our Service Departments lend additional value to our guarantee.

More than 150 Stores in the West—

Western Auto Supply Co.

Open Saturdays

to

9 P. M.

Sale mStore 201-N. Com'l.

Telephone 796

Wasco Tires

30x3 1/2 \$3.78 29x4.40 \$4.54

Wasco Tires light time and weight... see, from above, will make a minimum reduction... Guaranteed 2000 Miles... 30x3 1/2 \$3.78 30x4.40 \$4.54

A good investment



\$845
and up at the factory

Facetor \$845
Roadster Espanol \$845
Sedan Coupe \$845
Cape Business \$845
Sedan \$885
Cape de Lajo \$885
Sedan de Lajo \$935

All prices at factory

Because—De Soto Six is the only Chrysler-built six listing for as little as \$845.

Because—De Soto Six was designed by the same group of engineers, whose genius confers on all Chrysler-built cars the unmistakable attributes of leadership.

Because—Chrysler craftsmanship—guided by the unique Chrysler principle of Standardized Quality—has attained a masterpiece in the creation of De Soto Six.

Because—All the vast resources of Chrysler Motors—all the advantages resulting from the common policy of engineering, purchasing, man-

ufacturing and financing—are crystallized in De Soto Six in a manner that cannot be equalled by any other manufacturing source.

Because—De Soto Six truly expresses the applied significance of Chrysler genius, and the inimitable means whereby Chrysler Motors constantly seeks to achieve the greatest values in the motor world.

Those who fail to discriminate in the purchase of a motor car often spend more and get less. Guard your expenditure by telephoning us or calling at our showroom, and we will be glad to demonstrate the soundness of your investment in a De Soto Six.

DE SOTO SIX

CHRYSLER MOTORS PRODUCT

W. L. Anderson Inc.

DISTRIBUTOR

360 Marion St.

Telephone 928