

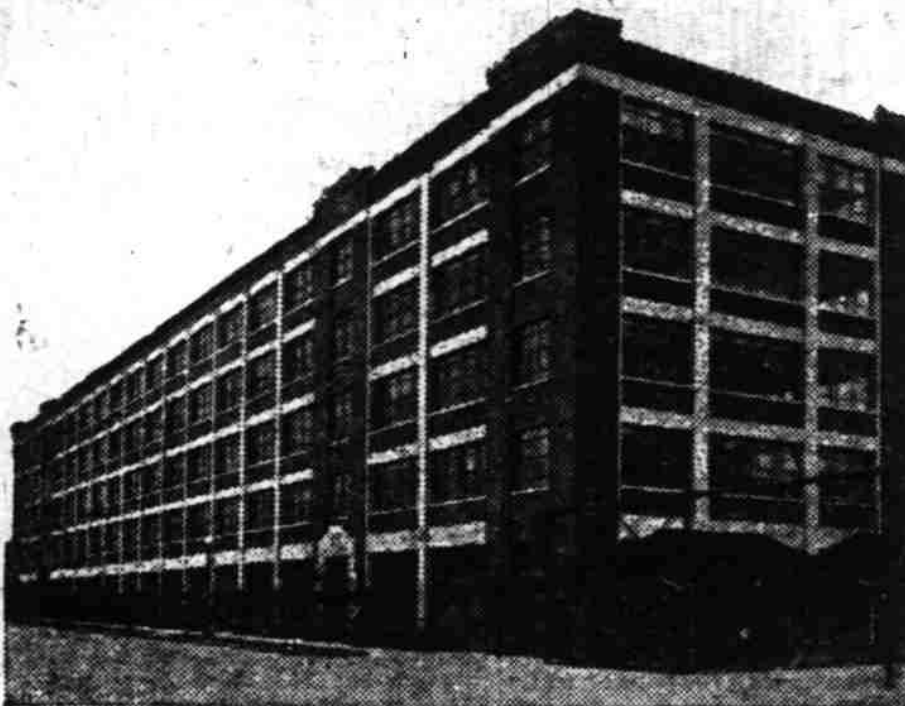
**REPORTS SHOW
HIGHWAYS OPEN**

Ashland, California state line. Paved. Construction work under way between Oregon City and New Bra. 4 miles. During work hours north bound traffic uses detour. South bound traffic uses present road. Snow on Siskiyou mountains between Ashland and California state line. Chains advised.

Pacific Highway
Portland, Oswego, Oregon City, Salem, Albany, Harrisburg, Junction City, Eugene, Cottage Grove, Roseburg, Grants Pass, Medford.

West Side Highway
Portland, Newberg, McMinnville, Corvallis, Junction City, Eugene: Paved.

Monument to Engineering



CHRYSLER MOTORS' new engineering laboratory is literally a complete motor car factory within itself. Here a staff of more than 500 technical experts create, design and build the experimental models and parts for all Chrysler cars and marine engines.

Old Oregon Trail
West of the Dalles Columbia River Highway.

The Dalles, Hood River, Portland, Rainier, Astoria, Seaside: Paved.

Roosevelt Highway
Clatsop, Tillamook and Lincoln Counties

Astoria, Seaside: Paved.
Seaside, Mohler, Brighton, Lake Lytle, Rockaway, Garibaldi, Bay City, Wilson River: macadam.

Wilson River, Tillamook, Beaver: Part paved, part macadam.
Beaver, Hebo, Neskegamin, Devils Lake, Siletz river, Otter Rock, Newport: Macadam.

Corvallis-Newport Highway
Corvallis, Philomath, Eddyville, Toledo, Newport: Macadam.

Tualatin Valley Highway
Portland, Hillsboro, Forest Grove, McMinnville: Paved.

Mt. Hood Highway
Portland, Government Camp, Hood River: Paved to Multnomah county line; balance oiled macadam. Open to swim; chains required east of Rhododendron. Closed by snow between Swim and Cooper Spur. Road between Government Camp and Wapinitia closed by snow.

McMinnville-Tillamook Highway
McMinnville, Sheridan: Paved.

Always **STRIVING--**

to give the best service and featuring quality merchandise has enabled our business to grow.

**SEIBERLING
TIRES and TUBES**

With a protection against all road hazards for a year
VULCANIZING and REPAIRING

ZOSEL'S TIRE SHOP

198 S. Commercial Telephone 471

**DRIVER TESTS
SAFETY NEED**

Examination of Physical and Mental Abilities Before Licensing Urged

(Continued from page 11) the license for a similar offense committed in any other state.

Any person whose license has been suspended is permitted a hearing before the department, and any person denied a license or whose license has been revoked may appeal to the courts.

Minors To Be Endorsed

The applications of minors under 18 must be signed by the parent or guardian or employer, who then becomes liable for any negligence in driving by such minor. Employers of minors under 18 who permit them to drive and persons who furnish motor vehicles to such minors are likewise liable.

As a general proposition it is in the northeastern states, where the automobile problem has been of longest standing, that the drivers' license system has become a well-developed institution. Here the need for cooperation among motor vehicle departments became evident several years ago and resulted in the formation of an eastern conference of motor vehicle administrators. A member of this conference recently said:

"Since we began to examine all applicants we have had the general public solidly behind us favoring the stricter methods of issuing licenses."

Operators' licenses serve as identification tags for individual drivers just as registration plates do for cars and trucks. Among other things they serve to eliminate uncertainty in the record system. This system shows which operators are habitual violators and makes it possible to put them on probation or to rule them off the highways.

As the result of its research, the national conference on street and highway safety holds that one of the chief factors determining the character and scope of a state motor vehicle department seems to be whether or not the state has a full-fledged drivers' licensing system, with mandatory examination and powers of suspension or re-

vocation. If the department has such powers there must be an active administration in close touch with many phases of the traffic problem, including the education of drivers in traffic safety. If the system does not include mandatory examination and power of suspension there is danger of the department's work being conducted in a perfunctory manner as tax licensing function and the benefits of the modern conception of state vehicle administration are largely lost.

A car that doesn't say

"Price Price Price"

every time you see it!

THE Chrysler-built Plymouth is a full-size car—roomy and comfortable—freed from all diminutive car limitations so ordinarily associated with a low price.

Plymouth is easy-riding. It has the smooth power and supple quickness so

typical of all Chrysler performance, with its exclusive big-performance, Chrysler Silver-Dome high-compression engine, cushioned in rubber, to assure utmost vigor, flexibility and responsiveness.

Everything about Plymouth is full-size and dependable,

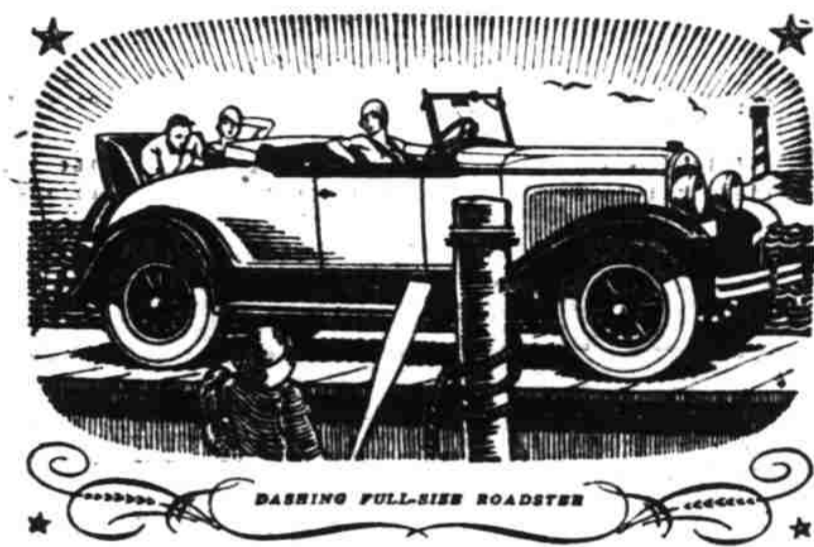
from the heavily-braced chassis and rugged axles to the safe, sure, easy control of Chrysler full-size weatherproof 4-wheel hydraulic brakes.

Yet, with all its bigness and power, Plymouth can match economy with any car.

No longer does a small price limit anyone to a small car. Plymouth full-size, Plymouth power, Plymouth beauty and Plymouth economy make Plymouth today foremost among lowest-priced cars.

Coupe, \$551 Roadster (ruble seat), \$571 2-Door Sedan, \$551 Touring, \$501 2-Door Coupe (ruble seat), \$501 4-Door Sedan, \$501. All prices f.o.b. factory. Plymouth dealers are in a position to extend convenient time payments.

PLYMOUTH
America's Lowest-Priced Full-Size Car



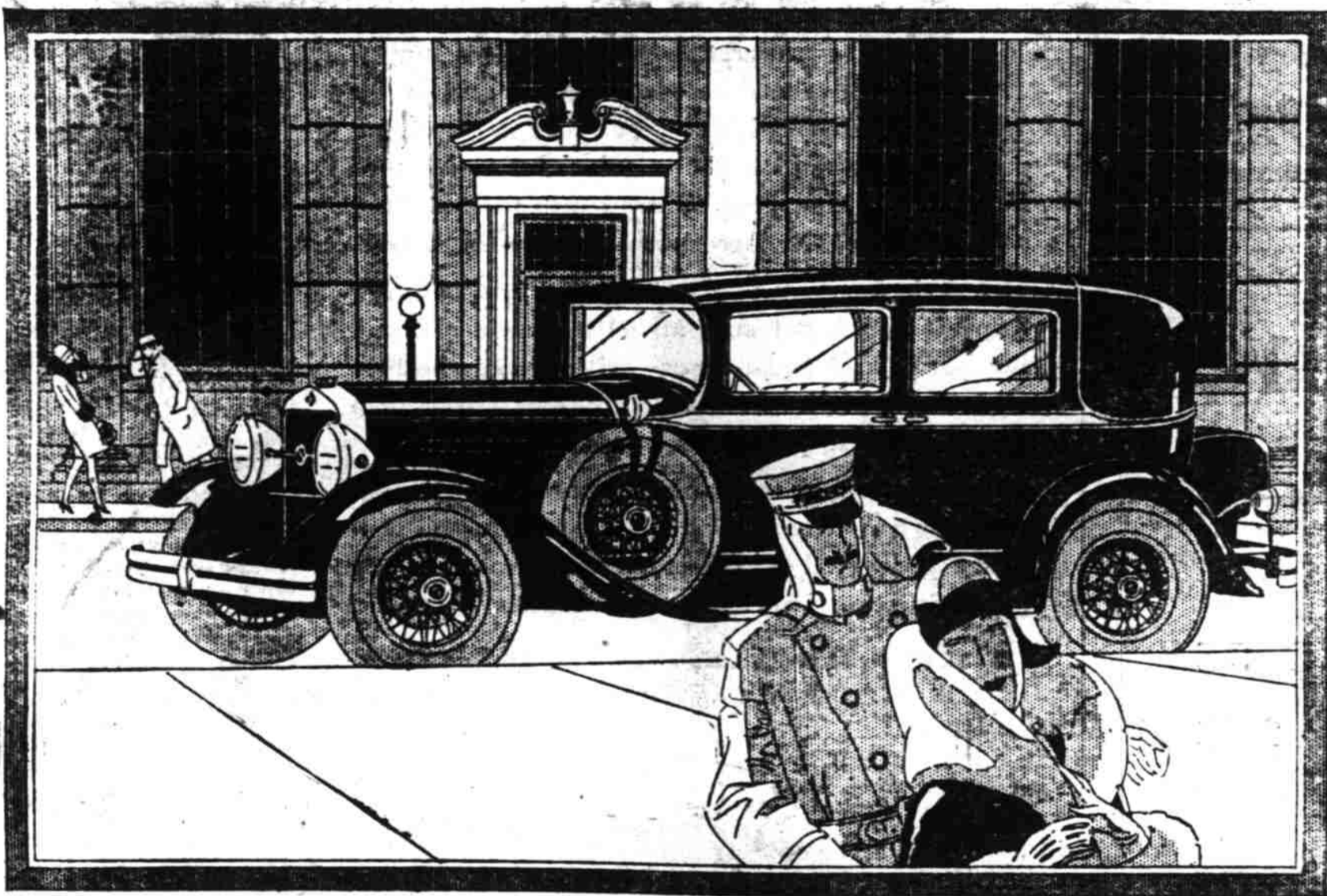
Fitzgerald-Sherwin Motor Co.

CORNER CHEMEKETA AND LIBERTY

TELEPHONE 1132

Studebaker's famous
Commander

NOW A SIX - \$1350 OR EIGHT - \$1495



New COMMANDER EIGHT BROUGHAM—\$1675. With six cylinder motor—\$1525. Six wire wheels and trunk standard Brougham equipment. COMMANDER EIGHT COUPE—\$1495; Commander Six Coupe, \$1350. Prices at the factory. Bumpers and spare tires extra.

STUDEBAKER'S history-making Commander now provides Six or Eight-cylinder power—as you choose! Let your personal preference decide—since quality, style, comfort, sturdiness are of equally high order—in fact, identical.

This famous motor car now takes on new brilliance of styling, with new and larger bodies, low swung on a costlier double-drop frame. New color harmonies and new comfort too, from hydraulic shock absorbers, ball bearing spring shackles and wider, deeper, softer cushioning.

There is a new "road-feel" to this splendid car, a

steadiness at great speed, the result of its lowness and stability, of its effortless steering and of its facile response to your toe.

Come see, ride in, and drive a new Commander Six or Eight today!

STUDEBAKER MODELS AND PRICES

The President Eight	\$1785 to \$2575
The Commander Eight	1495 to 1675
The Commander Six	1350 to 1525
The Dictator	1265 to 1395
The Erskine Six	860 to 1045

PRICES AT THE FACTORY

Tune in "Studebaker Champions" every Sunday evening 7:15 to 7:45 Pacific Time Station KOMO—KHQ—KGW and Coast-to-coast network

MARION GARAGE CO.

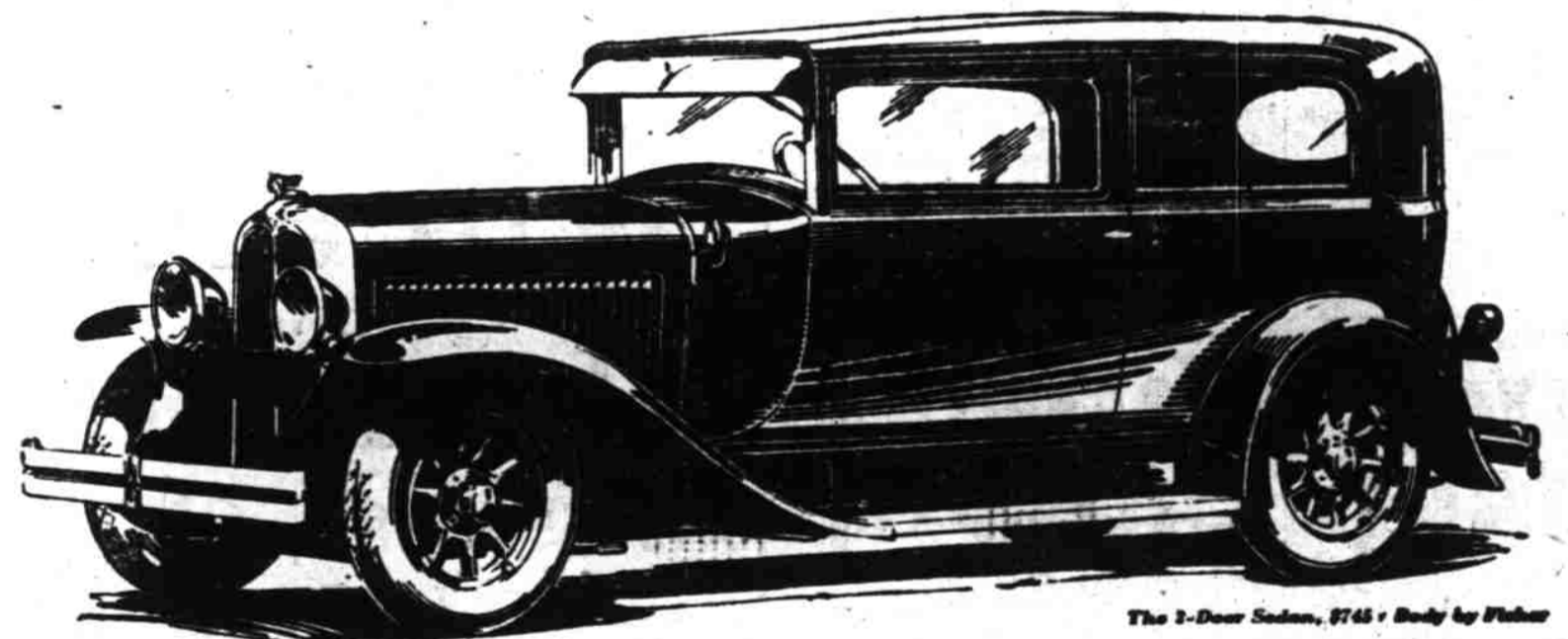
Wallace H. Bonesteel

235 S. Commercial

Opposite Marion Hotel

Telephone 362

**Forward-Looking People
Will Investigate this Car**



The 2-Door Sedan, \$1465 Body by Fisher

AMBITIOUS, forward-looking people everywhere are elated. Things seem to be coming their way. At last an automobile is available which keys in perfectly with their ideas of what a car should be. It is the New Pontiac Big Six.

A detailed inspection of the New Pontiac Big Six will disclose mechanical features which for quality of design, materials and craftsmanship

have no parallels in Pontiac's field. The same inspection will reveal bodies by Fisher which for staunchness of construction, comfort and richness of appointments are unequal anywhere at Pontiac's price. A ride will show how the New Pontiac Big Six is enabling progressive Americans to step up the quality of their motor cars without stepping out of the low-priced field. And forward-looking people will investigate this great new automobile.

Prices \$1465 to \$2295, f. o. b. Pontiac, Mich., plus delivery charges. Bumpers and rear fender guards regular equipment at slight extra cost. Check Pontiac's delivered prices—they include lowest handling charges. General Motors Time Payment Plan available at minimum rate.

VICK BROTHERS High Street at Trade Telephone 1841

Whiteside Motor Co., Corvallis, Oregon; Irvin Garage, Albany, Oregon; Silverton Motor Car Co., Silverton, Oregon; C. J. Shrover & Son, Dallas, Oregon; T. D. Pomeroy, Independence, Oregon; Fred T. Bilyeu, Seio, Oregon; Elmer Fitzgerald, Lebanon, Oregon; Anstine Service Station, Brownsville, Oregon; H. W. Morris, Waldport, Oregon; Bonas Brothers, Turner, Oregon; Henry C. Hollman, Harrisburg, Oregon; Fred Gooch, Mill City, Oregon.

THE NEW
PONTIAC
BIG 6 at \$1745
PRODUCT OF GENERAL MOTORS