

INSTITUTIONS RETURN FUNDS

Unexpended Balances From Biennial Appropriation Total \$168,455.66

State Institutions of Oregon returned to the general fund of the state unexpended balances of \$168,455.66, out of appropriations authorized for the conduct of these institutions during the biennium which ended December 31, 1928. Under the law all funds appropriated for state institutions and not expended during the biennium revert to the general fund.

The largest amount of unexpended funds returned to the general fund on January 1 was \$47,078.77, which was appropriated to the state hospital at Pendleton. There was appropriated for the conduct of this institution in 1928 \$448,400. It has returned to the state \$47,078.77.

School Has Surpluses

The state training school for boys which had an appropriation of \$233,868 has returned \$41,849.74. The state home for the feeble minded had an unexpended balance of \$28,211.19.

The Oregon state hospital has returned approximately \$14,750 out of its appropriation of \$1,046,836. Of the appropriation of \$384,500 authorized for the conduct of the penitentiary during the past two years there has been returned \$5029.87.

The state tuberculosis hospital which had an appropriation of \$220,822 had an unexpended balance of \$5199.81. The state school for the blind has returned \$1176.21 out of its original appropriation of \$53,000. The state school for the deaf has returned \$4085.01.

Home Fund Exhausted

The state industrial school for girls received an appropriation of \$73,547, of which amount \$3159.29 has reverted to the state. The appropriation for the Old Soldiers Home has been exhausted but there remains approximately \$11,882 of federal and ecclesiastical funds.

The Oregon employment institution for the adult blind which is operated by means of a millage tax has an unexpended balance of \$1,821.11.

Appropriations for the conduct of the state institutions during the current two years will be authorized by the legislature which convenes here January 14. The various appropriations sought by the superintendents already have been approved by the governor.

MRS. HOWE, NATIVE OF OREGON, PASSES

Mrs. Howe and a native of Marion county, died Friday at Newport, where she had lived the last two years. She had been in ill health for nearly three years and for the last two or three months was critically ill.

Mrs. Howe was the daughter of Francis M. Cook and Jane Edgar Cook, who crossed the plains to Oregon from Indiana in 1845, settling on what is known as the Cook donation land claim near Turner. It was on this donation claim that Mrs. Howe was born 70 years ago. She had spent a large part of her life in and near Turner.

Funeral services will be held in the Rigdon mortuary here Monday afternoon at 1:30 o'clock, the Rev. D. J. Howe of the First Christian church officiating. Interment will be made in the Twin Oak cemetery.

Besides her husband, Mrs. Howe is survived by three sons, I. N. of Salem, Emory of Aurora and Chester of Newport, and one daughter, Mrs. Hattie Schamm of Oakland, Calif. Five brothers and sisters also survive, as follows: Tom Cook of Pennington, Newton Cook of Marion, Oregon, Frank Cook and Mrs. Nellie Miller of Turner, and Mrs. Sudie Neal of Oakridge, Oregon.

Here From Corvallis—Miss B. Marie James of Corvallis is spending the week end visiting friends in Salem.

Unofficial "White House" For The Hoovers



Beautiful Italian Renaissance home of J. C. Penney, the chain-store magnate, at Belle Isle, Miami, Florida, which will be the home of President-elect Herbert Hoover from early in January until just before his inauguration.

The lower illustrations feature the music room and the private swimming pool.

Hoover to Occupy Penney Home, Belle Isle, Florida, In Pre-Inaugural Period

Belle Isle, Miami, Florida, will be the official pre-inaugural "White House of America." This is the simple but elegant home of J. C. Penney, founder of the J. C. Penney company and nationally known agriculturist and stock breeder, which the Hoover family will occupy. It is a three story white limestone house with overhanging eaves of mellowed apricot-colored tiles, overlooking beautiful Biscayne bay to the south, southeast and southwest and removed at a discreet distance from the Venetia Way boulevard. A road winds through Belle Isle park through many varieties of tropical trees to the handsome home.

graceful coconut palms, a golf putting green of smooth, close-clipped rye grass, awaiting the great man's pleasure.

Dignified and comfortable Where Mr. and Mrs. Hoover and their son, Allen, now traveling with them, will enjoy their home life in Miami has all the attributes of a genuine American home, conceived and executed in dignified and comfortable luxury. On the ground floor of the Penney home are the large dining room, opening on a porch and terrace overlooking the bay, and the spacious living room soaring two stories to its ceiling, with an organ loft at one end and a balcony at the other overlooking the room.

The second floor has two large bedroom suites with a sun porch for each apartment. On the third floor are two large bedrooms with independent baths and another commodious two-room suite, and the lofty bathroom with huge pendant chandelier and paneled beamed ceiling.

Even the kitchen on the ground floor, with servants' dining room and quarters, has an attractive view. Here are the rose gardens, beyond which you see the elevated walls of the swimming pool and glimpses of the bay through the palms. From the windows of any room in the house you can enjoy wide vistas of sparkling open water, rich, green lawns, shimmering palm fronds and gay tropical flowers, with an occasional distant rooftop of mellow tiles showing above the trees to give the warming assurance of neighbors.

Adjoining the Penney estate is that of Joseph H. Adams. These estates, together with the Belle Isle park along the road front, are merged by connecting lawns, flower beds and continuous walks into a single lovely unit. Each one of these homes has its own boat landing on the bay, with boathouse connecting.

Home Magnificent

The Penney home, is magnificent in its simplicity. Aside from several decorative ornaments and rich frieze running along the main facade beneath the roof tiles, the house impresses the visitor by the sheer beauty of line and mass, without superfluous decorative details.

To the south of the home, the swimming pool, lined with small colored mosaics, sparkles in the sunlight. Farther toward the southern tip, across a lawn of

Backache

If Bladder Weakness, Getting Up Nights, Backache, Burning or Itching Sensation, leg or groin pains make you feel old, tired, peevish, and worn out why not make the Cystex 48 Hour Test? Don't give up. Get Cystex today at any drug store. Put it to a 48 hour test. Money back if you don't soon feel like new, full of pep, sleep well, with pains alleviated. Try Cystex today. Only 60c.—adv.



PHILCO Electric RADIO



10 Months to Pay

Yes, that's our offer. Don't wait till you've saved up the cash. Enjoy the marvelous Philco Electric "Neutrodyne-Plus" Radio now—and pay out of income! A small payment down and it's yours. Pay the balance in easy monthly terms.

FREE TRIAL In Your Home, First

Yes, in your home! First we'll deliver the Philco to your home and let you try it out for yourself, free. Hear what Neutrodyne-Plus—Philco's new discovery—adds to radio performance! Judge the marvelous tone, wonderful selectivity and vast distance range. If not delighted, we'll take the Philco back. Remember, the trial is free!

Call, Phone 1708 or Mail Coupon

Don't fail to find out all about this liberal offer at once. Come in or phone—we'll gladly give you full details without obligation. AND do this NOW: Send the coupon for our free booklet showing all Philco models in full colors with prices and terms of our special offer. Mail coupon NOW!

No Aerial Needed

Thanks to Philco's super-power, it brings in local and many distant stations without an aerial! Far distant stations with regular aerial, even in the daytime. All-electric, entirely dry. Special Range Control cuts out local interference and separates distant stations. Phonograph connection to play records electrically.

Neutrodyne-Plus a new radio discovery

TRADE IN Your Old Radio

We'll make you a liberal trade-in allowance for your old, out-of-date radio. Now you can own the all-electric radio you've wished for without taking a dead loss on your old set.

H. L. Stiff Furniture Co. COMPLETE HOUSE FURNISHERS

G. W. DAVIS LIVED 20 YEARS IN CITY

George W. Davis, who was fatally injured by Pickwick stage December 20, dying the following morning, was born in Ellettsville, Indiana, 16 years ago, the son of Caleb and Christiana Davis. He had one brother and two sisters, one sister of whom survives.

He was married to the late Emma Davis, three years ago, by which marriage three daughters and one son were born. Mrs. E. A. Arneson of San Antonio, Texas, being the only one to survive childhood. The wife was severely injured in a railroad accident and after lingering eight months passed away, leaving the baby, now Mrs. Arneson, to be reared by Mr. Davis.

Later, Mr. Davis remarried, three sons of this union surviving: Walter Glen and Arthur Dale of Beaver, Colo., and Raymond E. of Portland. The two former were able to be present for

the funeral, Mrs. Arneson, owner of Inspiration Point, five miles out on the Garden Road, was also here.

Mr. Davis had lived in and near Salem for 20 years. He had expressed a wish that he be buried here, and accordingly was not taken to his old home in Nebraska for interment.

He had owned land near Salem at different times, was interested in different times and had a farm in Idaho.

He loved Salem and his friends very much. His closest friend here was W. J. MacArthur, assistant county treasurer of Marion county.

Liquor Charges Bring 2 Arrests At Independence

DALLAS, Ore., Jan. 5.—(Special)—J. W. Bloom was arrested in Independence Friday and charged with driving an automobile while drunk. He was lodged in the county jail at Dallas to be held for trial.

Harold Mills of Independence was brought to the county jail in Dallas to be held for a hearing before Judge Baker. He is charged with possession of liquor.

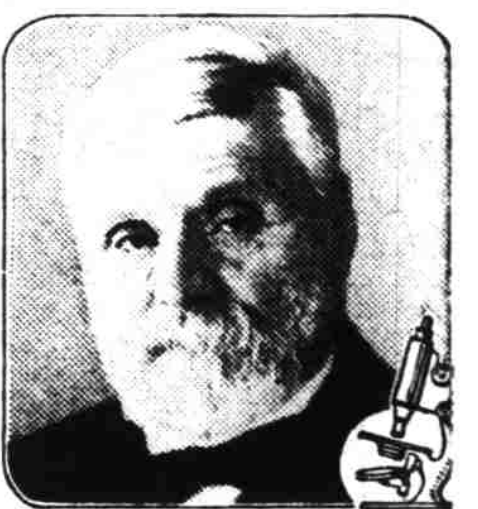
Old Folks Say Doctor Caldwell was Right

The basis of treating sickness has not changed since Dr. Caldwell left Medical College in 1875, nor since he placed on the market the laxative prescription he had used in his practice, known to druggists and the public since 1892, as Dr. Caldwell's Syrup Pepsin.

Then, the treatment of constipation, biliousness, headaches, mental depression, indigestion, sour stomach and other indigestions that result from constipation was entirely by means of simple vegetable laxatives, herbs and roots. These are still the basis of Dr. Caldwell's Syrup Pepsin, which is a combination of senna and other mild laxative herbs, with pepsin.

The simpler the remedy for constipation, the safer for the child and for you, and the better for the general health of all. And as you can get results in a mild and safe way by using Dr. Caldwell's Syrup Pepsin, why take chances with strong drugs?

A bottle of Dr. Caldwell's Syrup Pepsin will last a family several months, and all can use it. It is good for the baby because pleasant to the taste, gentle in action, and free from narcotics. In the proper dose, given in the directions, it is equally effective at all ages. Elderly people will



J. C. Caldwell M.D. AT AGE 93

find it especially ideal. All drug stores have the generous bottles. We would be glad to have you prove at our expense how much Dr. Caldwell's Syrup Pepsin can mean to you and yours. Just write your name and address in the special coupon you see at the end of this announcement, and send for a bottle to try. This complimentary bottle is forwarded, prepaid without charge of any kind.

Flu Time Be Careful!

Eat plenty of laxative food. Fischer's TOASTED Wheat contains all the wheat berry—wonderful flavor—easy to prepare—a perfect breakfast food, cooks in three to five minutes.

All Grocers Fischer Flouring Mills Silverton Oregon

CLEARANCE of WOMEN'S SHOES 150 Pairs

Women's Pumps in Patent Leather, Cuban and French heels. All very dressy numbers. Special for Monday and Tuesday \$3.98

Special for Monday and Tuesday Women's all over rubber, button Galoshes, 2-tone tan in color. Special while they last \$1.98 Regular price \$3.50.

For Comfort yet Good Looks Arch Support Oxfords in brown and black kid, Cuban heels. Built and fitted for Solid Comfort. Special during this Sale \$4.95

Special Lot of Women's Dress Pumps in patent leather, medium and high French heels. Exceptional values \$5.95

Every Shoe on Sale for Men, Women and Children

Sale! men's and women's Shoes

BUSTER BROWN SHOE STORE

Fine Shoe Repairing in Connection



For Painting & Decorating

Interior and Exterior. Latest Patterns in Wall Paper here February 15.

call

Dunsmoor Bros.

Telephone 2484 or 2664

Start Your Spring Housecleaning now