

Sons Of Jason Lee And Marcus Whitman Battle Thursday

LOOK BACKWARD REVEALS 'JINX'

Bearcats Fight Close Battles but Have Always Lost to Missionaries

"Jason Lee was playing quarterback for Willamette and Marcus Whitman was at end for the Missionaries," alumni of Willamette university and Whitman college like to relate. "Lee took the ball on an off tackle smash, but Whitman dumped the interference, tackled Lee by the whiskers and almost broke his neck."

Actually, relations between Willamette and Whitman don't go back that far. There is no record that they ever played prior to 1920, when Willamette was admitted to the Northwest conference.

Willamette has had varied strength on the gridiron since that year, but never has been quite able to upset the Missionaries. On several occasions critics have conceded that Willamette had the better team, and the scores have been so close that the Bearcats' inability to win has come to have the significance of a "jinx."

Whitman Always on Top
The first year Willamette had a team of world war veterans who were seasoned and tough, but Whitman came with an eleven that had been holding its own all season with the big colleges which were then in the Northwest conference.

Willamette Scores
In 1925 Willamette scored two touchdowns on Whitman but lost 20 to 13; that was a year when the Bearcats were strong on offense but erratic on defense, particularly against passes.

This year Whitman has a team declared by the coaches of Northwest conference teams that have played against it, to be as good as the University of Washington's eleven. Its line is big from end to end, and the backfield, in addition to being fast, is big too; there's one backfield man, Neilson, who weighs over 200 pounds and runs the 100 yard dash in 19.4 seconds.

NOVEL MUSIC PLAN IN USE AT SCHOOL

SALEM HEIGHTS, Ore., Nov. 27.—(Special)—Much interest is being taken by pupils in the upper grades in the musical arrangement for daily music. These classes have been divided into four groups, and each group has songs, piano numbers or some other form of music for the opening exercises, the groups taking turns in providing this entertainment. Original songs have been composed by some of the groups.

Leaders are: Group 1, Frederick Thielson; group 2, Harvey Larsen; group 3, Glendon La Duke; group 4, Shurley Stevenson.

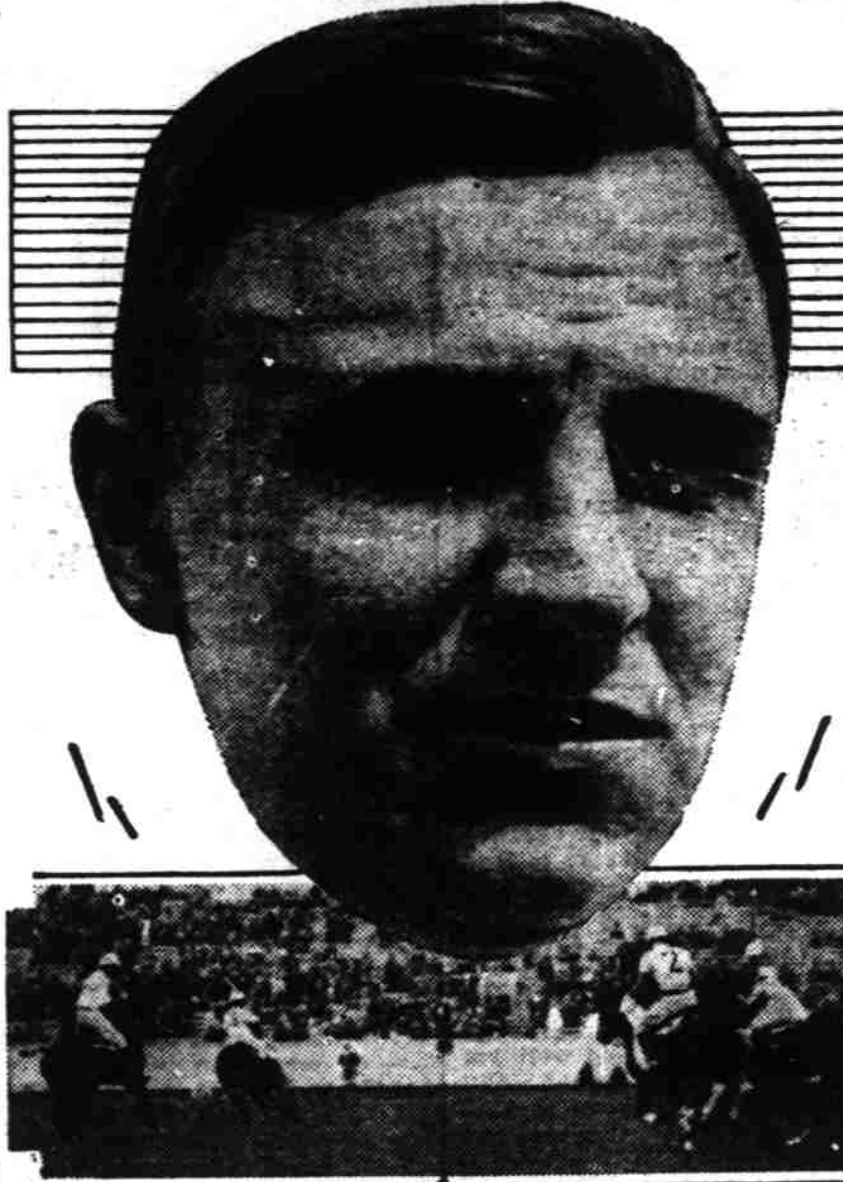
The group which does the best work is to be given a party by the other groups at the close of the mid-year term.

Bitumulus Use On Highway Is Being Watched

The result of an application of 10,000 gallons of emulsified asphalt oil to a section of macadam road near Sandy is being watched with interest by state highway officials, according to an announcement made by L. P. Campbell, equipment engineer of the highway commission.

In case the experiment is a success a large part of the road oiling program for 1929 will be devoted to bitumulus. Emulsified asphaltic oil is a combination of water and asphalt and is sold under the trade name of Bitumulus. It was said to have originated in Europe. Officials said that the use of bitumulus would result in a material saving to the highway department.

YANK POLO TITLE SAFE 'TIL 1930



With the remote likelihood of the United States Polo association accepting any foreign challenges for next year, the world supremacy of the Yanks with the mallet will be safe at least until the summer of 1930. The recent defeat of the Argentine four at the hands of the United States is believed to have forestalled another invasion from South America for at least three years. Above, Tommy Hitchcock, ace of the U. S. Big Four, and, below, a scene during the recent three-match series with Argentina.

STAR FINDS MANY DELIGHTS IN PLAY

"There are many reasons why the character part of 'Rose Marie' appeals to me so strongly," says Virginia Fox, who sings the leading role in 'Rose-Marie' coming to the Elsinore theatre for tonight only.

"I believe that every one loves a red-blooded man's play with strong, healthy characters; they always have a personal appeal. 'Rose Marie' is a colorful, romantic spectacle that thrills the actor as it does the audience and their enthusiasm, shown by their applause, makes him do his best. There is a thrilling vigor to 'Rose Marie' that you seldom find in musical plays. There is a barbaric splendor, a score of unusual beauty and romantic story that runs through the play that appeals to every woman. I know that it does to me and I hope that I am no exception; but if romance does not appeal, there is the colorful and manly Northwestern police with their musical voices, the flaming Totem Pole number, a revelation in stagercraft and numerous other scenes to thrill the actor and make him do his best. It is the enthusiasm of the audience that in turn reaches back over the footlights and stimulates one to do his best.

"Few musical plays have had a story that runs logically through the whole play; it has generally been lost somewhere between the rise of the curtain and the middle of the first act, but 'Rose Marie' is filled with dramatic poetry; it is more like grand opera, the story is as important as the music, and I find a strong appeal in 'Rose Marie'; it is more like an exhilarating cocktail than it is real work."

PREMIER FEMININE BOWLER HERE SOON

Mrs. G. McCutcheon, acknowledged to be the leading woman bowler of the world, will be in Salem next Sunday, appearing at the Winter Garden in matches against Salem's leading bowlers of the "stronger sex," and in an instruction period.

Mrs. McCutcheon has bowled several perfect 300 games, and averaged 235 at Denver last winter to defeat Jimmy Smith, the premier male bowler, who averaged 232.

She will instruct both men and women in the ten pin game and will bowl against ten local stars. Although the Winter Garden is put to considerable expense to bring Mrs. McCutcheon here, the management has decided to waive the usual high admission fee charged to witness her exhibitions and matches, and the public will be admitted without cost.

Woman Patient Takes Poison in Suicide Attempt

Mrs. Mathilda Downing of Portland, a patient at the Oregon state hospital here, attempted to commit suicide early Tuesday by drinking a quantity of iodine. Hospital attendants said the woman was in a critical condition.

UGLAS AWAIT OREGON TEAM

Southerners Determined to Make Desperate Stand on Thanksgiving

LOS ANGELES, Nov. 27.—(AP)—The Bruins of the University of California at Los Angeles might be defeat-groggy, having been trounced by every Pacific coast conference foe this season, but Oregon University footballers, enroute here for a Thanksgiving day tussle, are apt to find them in a mood that bodes little good.

The Bruins, playing their last game of the season, are short ends in the turkey day clash, but they are going about their workouts indicates that they are preparing to give the Webfoots the battle of their lives. Every man on the squad, with the exception of Earl Field, fullback, ill with "flu," is available to Coach William Spaulding for the game. With the Oregon line outweighing the Bruin forward wall almost ten pounds to the man, Spaulding has had to make several changes in his squad in an effort to strengthen it both defensively and offensively. He has shifted Cliff Simpson into the quarterback berth.

Long and grueling practice sessions have been the share of the Bruins this week, and if they show the fight they have displayed in their drills when up against Oregon, a battle is in prospect. The Webfoots are due here tomorrow morning.

LESLIE, PARRISH IN SCORELESS TIE

The question of supremacy between two junior high schools, remained unsettled for this year when Parrish and Leslie closed their season by battling to a scoreless tie Tuesday afternoon on Olinger field. Their game ended similarly.

In the first half of the game Parrish had the best of the argument and penetrated well into Leslie's territory a number of times, once getting the ball to the one yard line. But there Leslie held, and in doing so was aided by Parrish's poor choice of plays.

The third quarter found the teams battling on more even terms, with a slight advantage for Leslie, and in the last quarter Leslie made plenty of yardage but couldn't get to the goal line.

Lineups were:
Leslie: Martin, RE; Peterson, RT; Halvorsen, C; Grimes, LG; Otjen, LE; Yarnell, LT; Sevik, Q; Shipman, RH; Read, RB; Substitutions: Leslie; DeHarrport, Parrish; Referee, Dalton; George; head linesman, Backe.

School Closing Today for Six Days Vacation

When Salem school children are dismissed from classes today, they will be through with school until next Monday morning. Thursday being Thanksgiving, there will be no school Friday, it was announced Tuesday from the office of the city school superintendent. Many of the teachers will leave for their homes late today to remain over the holiday.

As there is only one nation of great importance that came into existence about that time it is not difficult to apply the symbols as referring to this country. As the declaration of independence was made in 1776 and the constitution ratified in 1789 our nation was only nine years old when the prophet saw it coming into existence.

"The Bible predicted that this country should come into existence upon new territory rather than from conquest of other nations as the great nations of Europe and Asia Minor were formed and whose formation were also predicted in the Bible. The bear representing the United States had two horns like a lamb. A lamb stands for Christ; so this nation was to put into effect Christian principles in the formation of its government.

Sportistory

Wednesday, November 28
1879—Lee Fohl, former manager of Cleveland and St. Louis Browns, born in Pittsburgh, Pa. 1901—Cochems of Wisconsin, receives Chicago's kickoff and runs 100 yards to a touchdown. 1901—Turnbull, of Cornell, receives a Penn punt and runs 85 yards to a touchdown. 1907—Draper, of Penn, recovers a fumble and runs 75 yards to a touchdown in a game with Cornell. 1912—Mauhe, of Penn State, kicks a 51-yard field goal from placement in a game with Pittsburgh. 1927—Pittsburgh trades Kiki Cuyler for Sparky Adams and another player to Chicago. 1927—Montreal is admitted to the International league.

CALIFORNIA TO PLAY GEORGIA

Bears Agree to Represent West in Annual Post Season Contest

BERKELEY, Cal., Nov. 27.—(AP)—Approval of California's Bears playing a post season football game at the Rose Bowl, Pasadena, on New Year's day, was granted today by the executive committee of the University. It is understood that Georgia Tech will be the opponent in the east-west classic.

The Bears completed their coast conference schedule without defeat this season, but were tied in two games—by Southern California and Stanford. Their record is second only to Southern California, which was tied once.

Favorable action by the student committee means that the final obstacle to the game has been passed over. The players and coaches desired the contest while President W. W. Campbell let it be known that he also would approve if the executive committee did.

Only light practices will be held until final examinations, the middle of next month, after which Coach C. M. "Nibs" Price will start heavy workouts.

VISIT PARENTS
HUBBARD, Ore., Nov. 27.—(Special)—Mr. and Mrs. Lyle Hill, formerly of the Alaska auto camp but now residing at Woods, Oregon, are visiting Mrs. Hill's parents, Mr. and Mrs. A. J. Smith. The Hills sold the Alaska auto camp about a year ago and went to Tillamook county where Mr. Hill has an interest in what is reported to be a platinum mine. The mine is in only the first stages of development.

BOY RECOVERING
AUBURN, Ore., Nov. 27.—(Special)—La Vern Cain, who makes his home at the residence of Mrs. Charles W. Cady, is a patient at the Deaconess hospital in Salem, but is recovering rapidly from his illness.

MEDFORD TEAM HEADING NORTH

Southern Squad Ready to Meet Benson Tech on Thanksgiving Day

MEDFORD, Ore., Nov. 27.—(AP)—Thirty members of the Medford high school football squad left tonight in a special sleeper for Portland, where on Thanksgiving day, they will meet Benson Tech in an "intersectional" football game. The squad is in charge of Coach P. G. Callison.

The team is in good condition although colds have bothered several of the players.

The starting lineup of the Medford team will probably be center, B. Hughes; guards, J. Hughes and Sprague; tackles, Morgan and Storr; ends, McDonald and Bowerman; quarterback, Melvin; half-backs, Anderson and Harrell; full-back, Cooksle.

The squad will reach Portland tomorrow morning and will work out on Multnomah field in the afternoon. Tomorrow an excursion of 500 southern Oregon football fans, the high school band—state champions, and the Elks band, will leave for Portland.

CHICHESTERS PILLS

NEW LOW FARES PICKWICK STAGES FREQUENT SCHEDULES

San Francisco Sacramento and Oakland \$13.50

Los Angeles \$19

Big savings now to California points. Deluxe type Pickwick coaches. Departures daily at 1:30 and 10:10 a.m.; 2:10 and 7:20 p.m.

Two Daily Schedules East. Low Fares to Salt Lake City, Denver, Kansas City, St. Louis, Chicago, New York City. Pickwick Stages 906 Phone Hotel

Ready to Serve



Our fleet of trucks are at your service. If you want moving or hauling work done carefully and quickly

Just Call 930

Fuel for Fall! WE HANDLE FUEL and DIESEL oil FOR FURNACES Also Gas & Diamond Briquets

Larmer Transfer Co. Office 143 S. Liberty Warehouse 889 N. Liberty

HOCKEY DATA
At Boston: Boston, 1; Pittsburgh, 0.
At New York: New York Americans, 1; Ottawa, 0.
Read the Classified Ads



Watch THE SKIES FOR Shooting Stars FRIDAY NIGHT NOV. 30TH

DON'T forget the date—watch the skies for the most spectacular event in the history of motor fuel in Oregon—an event heralding the coming of the new and better Texaco Gasoline and Texaco Golden Motor Oil.

A shower of stars—every red star with Texaco Green "T" on one side, and gold on the other is worth five gallons of gasoline free. It's the night when dreams come true.

THE TEXAS COMPANY
Texaco Petroleum Products

Remember, 8 P.M. Friday NOV. 30TH