

CHEMAWA GRIDMEN GET NEEDED REST

CHEMAWA, Ore., Oct. 25.—(Special)—The Chemawa Indians will enjoy a much-needed rest the coming Saturday. The Astoria high school team scheduled a game with the local redskins but the fishermen had a sudden change of heart and phoned over Wednesday cancelling the game.

Coach Downie's light but scrappy charges are suffering slightly from injuries. Pete "Napoleon" McCluskey went into the third quarter of the Willamette game and stayed in long enough to disable one of his legs and is having a hard time recuperating. George Meachen, regular left end, is out with a bad knee. Clifford Meachen, who has been a long time getting over a dazed condition suffered in a collision during scrimmages is recovering his speed and usefulness again and forthcoming games will undoubtedly see him step out with the best of them.

Chemawa plays Columbia university at Portland November 3. By that time it is expected that all the men will be in shape again and rarin' to bring home scalps.

GRAVEL PIT WILL BE OPENED SOON

WACONDA, Ore., Oct. 25.—(Special)—Pierre Collard has returned after a two months absence from a county gravel plant near Mehama. Mr. Collard plans to repair his Mission Bottom gravel pit which he will operate in the near future. There is a great demand for gravel on the roads in this section before the fall rains begin. The road west of Waconda has been widened and straightened recently, and will require a heavy coat of gravel before the fall rains begin.

A Halloween party is being planned by the pupils of the Mission Bottom school, under the supervision of their teacher, Mrs. Holden.

Harvesting of potatoes and corn is in progress in this vicinity.

Mr. and Mrs. Henry Rasmussen of Silverton were recent guests at the home of Mrs. Rasmussen's parents, Mr. and Mrs. Isadore Loren.

Mrs. Wheeler, mother of Mrs. J. C. Savage has been seriously ill at her home near Salem.

Elsinore Staff's Aid Helps To Put School Over Top

The fact that the Statesman's great cooking school was held in the beautiful Elsinore theatre was due to the interest and co-operation of George Guthrie and his theatre staff, making possible the most comfortable accommodations possible for the largest possible number of guests.


The 1500 seats in the Elsinore theatre, which has won nationwide comment for its beauty and richness, was virtually all occupied on the last two of the four days of the school. Throughout the session Mr. Guthrie and the Elsinore staff co-operated splendidly in every way to make the event a success. A skilled group of ushers gave valuable assistance each day. Motion picture operators and stage hands were provided for each class.

Most Students Self Supporting

OREGON NORMAL SCHOOL, MONMOUTH, Ore., Oct. 25.—(Special)—Last week ended registration for the fall term with an enrollment of 857 students, of which number 124 are practice teachers. Statistics compiled at the business office show that 41 per cent of these students are self-supporting and 33 per cent are partly self-supporting.

Families Hold Picnic Dinner

CLEAR LAKE, Ore., Oct. 25.—(Special)—Mr. and Mrs. W. P. Collard, Mr. and Mrs. Wendell Barrett and Evelyn Cain motored to the mountains above Mehama for a picnic dinner. The day was spent at the site where Mr. Collard operated a gravel plant for the county.



Schilling Products

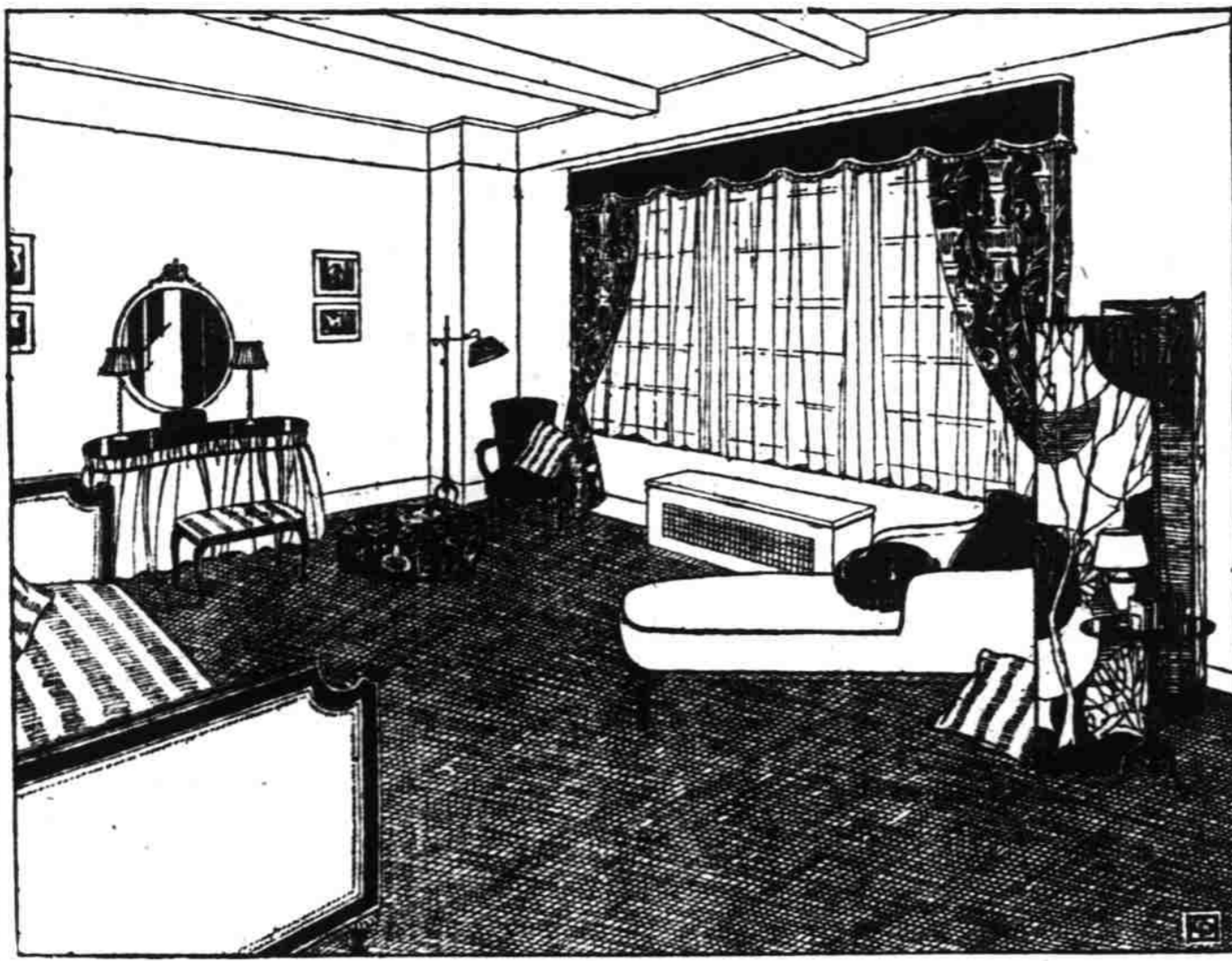
have been selected exclusively for the

Cooking School

Baking Powder
Spices
Extracts
Coffee
Tea

Moneyback
Your grocer returns your money on any Schilling Product for any reason whatever. Your statement is enough. Don't return the goods.

Velvet Vogue Penetrates Milady's Boudoir



By Hilda Hunt

Simple in its lines and furniture, yet elegant in its fabrics, following the trend for simple elegance in dress, is this bedroom in soft green, a pinkish beige and

West Salem News

By Helen H. Rodolf—Phone 2402-J

Officer Flushes Drinking Party

Clive Scott, traffic officer of West Salem, broke up a drinking party of four youths Wednesday night in West Salem near the Sampson service station at the foot of the bridge. They were standing behind a car drinking from a quart jar. The boys were not West Salem residents. They were ordered before Justice J. R. Benton for trial.

Final preparations have been made for the Halloween circus to be given in the basement of the Ford Memorial Methodist church Friday night. Everyone is invited to attend. Many novel surprises have been worked out and the evening will be one of jollity and entertainment. The Epworth league is giving this party to raise money for the church carpet. No entrance fee will be charged.

Mr. and Mrs. George Davis are keeping Mrs. Arthur Durham's baby while Mrs. Durham is at the bedside of her aunt, Mrs. A. Kessal. Mrs. Kessal has rallied from her sick spell, but still requires constant care and attention. Mrs. Durham is Mrs. Kessal's niece, and was practically raised by Mrs. Kessal.

Jim Henkle and his father and mother, Mr. and Mrs. Sam Henkle and their granddaughter are moving to the Olsen ranch on the Glenn Creek road.

rose. Simple and few as the pieces of furniture are, this type of furnishing is suited only to the room of considerable size. The color scheme and the richness of the draperies make it unsuited

to the small room, without giving an over-crowded appearance. But it makes a very delightful room of the boudoir type for the larger bedroom.

The best bet for the furniture is either maple or mahogany, which lends itself richly to the green, beige and rose of the color scheme. The walls should be either in a deep cream or a light tan. Figured wall paper should not be used in combination with the figured draperies. The beige note is brought out in the bedspread, the top of the dresser bench, and in several of the cushions, which are of velvet in a two-tone effect, the tones being kept very light, but of pinkish cast.

The kidney table shaped dresser is draped in rose silk in a medium shade. The lamp shades are of the same material and color. The same shade of rose covers the chaise longue, and a deeper shade is used for the cushions.

As a background for this, the floor is covered with a soft pile carpet of a soft green of the receda type. As a tie-up with the floor covering the window valance is of green velvet in a deeper shade of the receda green, and the chair is upholstered in mohair to match. The draperies and floor cushion are in a rich silk tapestry incorporating the rose, beige and green of the color scheme.

The screen may be covered with a scenic wall paper, rich in coloring, or with a Japanese colorful paper with gold in it. These screens, covered with choice imported wall papers of unusual design, are being more and more used by leading interior decorators. Sometimes it is an English print repeated from centuries back, sometimes, frequently, a woodland scene with its rich woodland colorings of greens and browns and a little brighter color, sometimes a hunting scene, and again the rich colorings of the Japanese or Chinese decorators. It all depends upon the type of room in which the screen is to find a home.

They had been visiting with their son, Ben Franklin, here and were brought back to his home after the accident.

Herrling Hurt; Car Turns Over

TURNER, Ore., Oct. 25.—(Special)—Franklin Herrling of Salem suffered severe injuries to his leg and a broken nose Tuesday when his automobile went into the ditch and turned over, a short distance north of Turner. Mrs. Herrling, who was in the car with her husband, was less seriously injured.

They had been visiting with their son, Ben Franklin, here and were brought back to his home after the accident.

MEET YOUR FLOUR
The more you sift it the better the results.


Fisher's BLEND BRAND FLOUR

Take the Guess-Work Out of Bake Day

The wonderful exhibits at the Cooking School Contest demonstrate the wisdom of using FISHER'S BLEND FLOUR—and prove once again that it's as good for cakes and pastry as for bread.

Dorothy Williams, the Cooking School Demonstrator, has used it exclusively in all demonstrations and you will be wise to follow her example every day in the year.

FISHER'S BLEND is used in more Northwest homes than any other one brand of Flour.



Tune in KOMO Seattle

Service Station Nearly Finished

CLEAR LAKE, Ore., Oct. 25.—(Special)—Arthur Penny is building a service station on the northeast corner where the Quinby-Clear Lake road intersects the Champoeg road. The corner was formerly owned by Christene Harold. Penny's station is nearly completed and he expects to have it open for business in the near future.

Party Enjoyed By Church Folk

SILVERTON, Ore., Oct. 25.—(Special)—Mrs. Theodore Opstead was hostess for a circle of friends from the Emanuel Lutheran church at her home on Wednesday night. The affair was in the form of an old fashioned quilting party. The quilt which was finished will be sold at the bazaar. Dainty refreshments were served late in the evening.

Closing Out Dry Goods, Hosiery Furnishings

Our Low Prices Are Made Still Lower

We are Selling:

Jap Crepes	15c	25c Gingham	17c
Yard		Yard	
25c Curtaining at	19c	19c Curtaining	15c
Yard		Yard	
35c Devonshire at	25c	Choice of our	99c
Yard		stock of Corsets	
Arrowhead Silk	75c	Arrowhead Fiber	39c
Hosiery		Silk	
Children's 25c	19c	Hanes \$1.50	\$1.25
Hose at		men's Unions	
Men's Fancy	29c	Ladies' \$1.50	\$1.25
Socks, pair		Umbrellas at	

All Umbrellas at like reductions
In Groceries We Feature

1 can	10c
Scat	10c
1 can	
Mica Axle Grease	\$1.35
1 10-lb. pail	
Oregon Strained Honey	\$1.75
1 sack Red Rose guaranteed	
Hard Wheat Flour	89c
1 bushel box of	
Delicious flavor Pears	51c
1 lb. of Fresh	
Creamery Butter	25c
4 10c cakes Beauty Bubble	
Toilet Soap	

CUT PRICE TOBACCO

4 10c	25c
Torchlight	
1 large	35c
Our Advertiser	
1 lunch bucket, full lb.	59c
George Washington	
1 8-oz. can Prince Albert with an	59c
imitation Meerchum pipe free	
1 8-oz. tin Sir Walter Raleigh with	49c
a 15c tin free	

All Tobaccos are sold at all times at cut prices.

C & C Store

Phone 560 Free Delivery 254 N. Com'l.

LOWER PRICES ON SEASONABLE Merchandise of Hig' Quality



Sweaters

You are sure to find the style and color sweater you desire here in our complete stock.

Shaker Sweaters	Coat Style Sweaters
In black, navy or white, priced as low as	In a variety of styles and coloring, priced upwards from
\$5.95	\$3.98

College and High School Sweaters

Pullover sweater for the high school or college girl in your own colors, with slit pockets **\$7.50**

Sunburst SKIRTS

We have a beautiful array of these popular pleated skirts in all of the new colorings for Fall and Winter.

They're real values at these prices

\$3.98 and \$5.95




HOSIERY

Kayser silk hose in slipper heel and full fashioned in all the new fall shades. This hose generally sells at a high price elsewhere—Kafoury's price.

\$1.50 pair

Children's Three-Quarter Hose

A good ribbed hose with fancy top in shades of beaver, grain, apricot and biscuit—

EXTRA SPECIAL—**19c**

LINGERIE OF GLOVE SILK

IN COLORS OF FLESH, PEACH, GREEN AND ORCHID

VESTS	CHEMISE
\$1.98	\$2.95
SLIPS	BLOOMERS
\$4.95	\$2.95


466 State St. **Kafoury Bros.** Phone 877

SALEM — PORTLAND — SPRINGFIELD

behind the

"Sweet Sixteen"

stands this fact . . . !



—be sure to get it before the School is over.

Women all over the West have expressed themselves as being delighted with the "Sweet Sixteen" packet. And there is one overwhelming fact behind its usefulness: that Ghirardelli's Ground Chocolate is chocolate in its most convenient form . . . one form of chocolate for cake-making—for beverage—for puddings and desserts . . . one form of chocolate which need not be melted—which can be put into the sifter with the other dry ingredients, or can be made into a paste with milk.

The "Sweet Sixteen" packet is free . . . of course.

GHIRARDELLI'S GROUND CHOCOLATE

for cakes, beverages, desserts . . . ONE kind of chocolate.

SAY CHEER-AR-BELLY