

CARE ADVISED FOR RADIATOR

Approach of Cold Weather Time for Protection of Automobile

With the approach of freezing weather, the average motorist is reminded of the pressing need for doing now what he should have done some time ago. Like most humans, he has neglected doing the essential thing until the hour of absolute necessity is about to strike full-fledged, with its promise of punishment for things left undone.

In other words, he has put off cleaning thoroughly, and properly, the cooling system of his car. Few motorists, even in this enlightened day, realize the desirability for taking correct care of their cars' cooling systems.

Rust, scale and leaks are the triple threat of the uncleaned-for-cooling system.

Before using any anti-freeze preparations in the radiator, it is necessary to take certain definite precautions; failure to observe what should be a common servicing practice may result in unsatisfactory conditions or loss of the anti-freeze compound. A grain of such precaution will work wonders in guarding against such contingencies. The following directions are given by one authority:

What to Do
"Unless you are sure that the entire cooling system of your car is free from rust, scale and leaks, the following should be observed:

"Remove rust and scale from radiator and entire cooling system. Washing soda solution is more effective than plain water for this purpose. In either case, the motor should be run for ten minutes, after which the entire system should be thoroughly flushed out with clear water. Removal of hose connections while flushing will facilitate draining off the rust and scale.

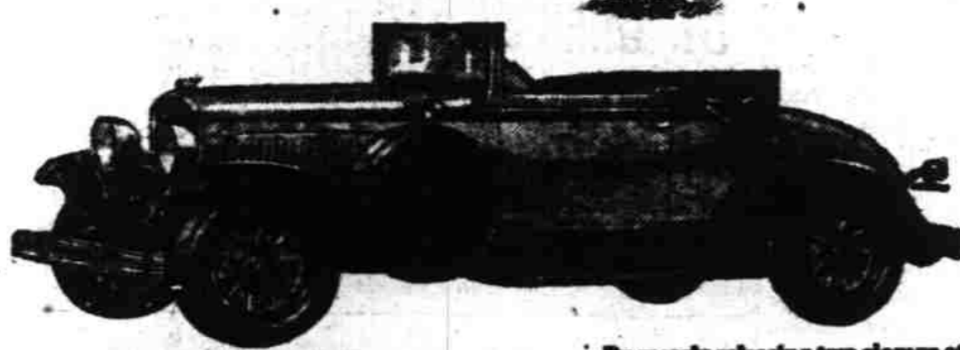
"Tighten all parts of cooling system, including hose and pump connections, gaskets, expansion plates, drain cocks, pump glands and grommets on water pump. Examine cooling system periodically to make sure there are no leaks."

If you think the future will take care of itself, that means you haven't lived in the future. Springfield Sun.

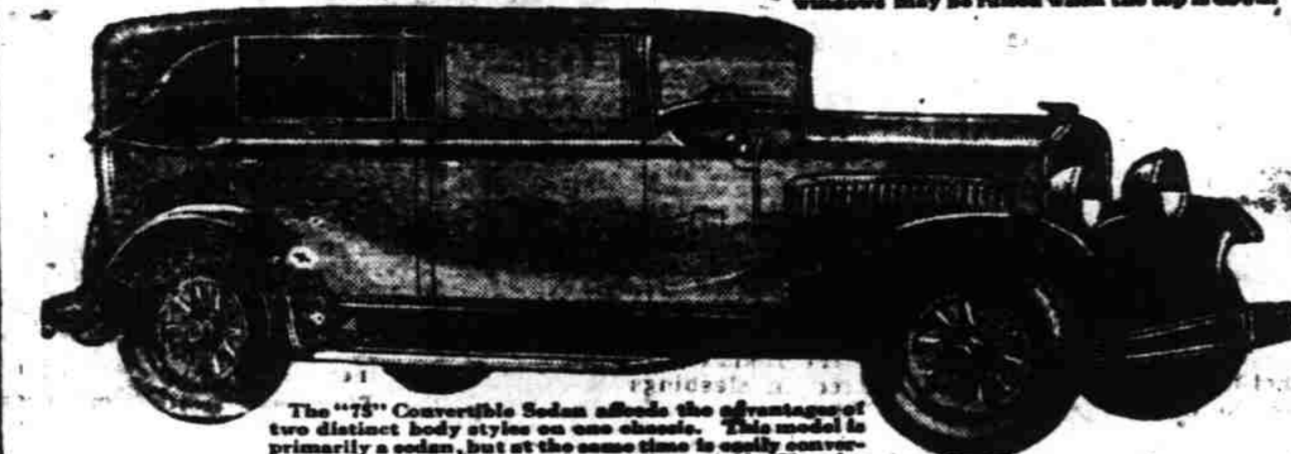
Two Convertible Models by Chrysler



The "75" Convertible Coupe (with rumble seat) is a worthy companion car to the famous Chrysler "75" Sedan.



By merely adjusting two clamps at the top of the forward fenders and "hooking" the top from either side, the top of the Convertible Coupe may be instantly and quickly lowered. The fenders may be raised when the top is down.



The "75" Convertible Sedan affords the advantages of two distinct body styles on one chassis. This model is primarily a sedan, but at the same time is easily convertible into a smart, dashing phaeton. Designed by Chrysler and built by Locks.

DODGE SENIOR SIX IN HEAVY DEMAND

Universal public acceptance of the new Senior Six models recently announced by Dodge Brothers corporation is reflected by a bank of thousands of unfilled orders on file at the factory from dealers over the country. Production on the played. In many points, sales have depleted the first factory shipments. The car's roadability—whether in city traffic or in fast driving along country high-

ways—is featured by ease of control equaled in only the higher priced cars. Increased power has been matched with superior four wheel hydraulic brakes to insure maximum safety. Six types are being pushed on overtime schedules to eliminate all possible delays in retail deliveries. "Typical Dodge dependability with a new era in motor car style was the verdict of those who first drove the new Senior Six," said H. F. Bonesteele, local dealer. "Its appearance, mechanical refinements and added luxury have made its immediate appeal to the buying public. Its smooth power-ful performance is more than meeting the expectations of those who purchased following the introduction of the car. "Interior appointments of the car are attracting most favorable comment from women who demand the latest refinements in upholstery and finish. Graceful exterior body lines have been attained at no sacrifice to comfort or roominess for every passenger. Metropolitan and smaller city dealers alike reported the enthusiastic reception accorded the new Senior when it was first displayed. The man who wakes up to find himself famous hasn't been asleep. Regina Leader.

PROVING FIELD IS IN DEMAND

General Motors Constantly is Being Used to Test Motor Vehicles

General Motors Proving Ground, the 1245 acre outdoor laboratory near Milford, Mich., where cars are accurately measured to find out their performance ability, has in response to a demand for greater accuracy, added a weather house to its many ingenious scientific checking devices.

Adapted, like so many of its companion devices at the proving ground, to the sole task of evaluating precisely and impartially all makes of automobiles, the weather house is, perhaps, the only one of its kind in the world. Unlike other observatories, this one is not a weather forecaster, but a weather "hindcaster" to use a term employed by proving ground engineers. It is unique, again, in that it includes in its complete equipment, probably the only wind velocity indicator in operation outside of the United States navy.

Used Day and Night
It has been in use for several weeks, and is now operating day and night under the direction of skilled meteorologists. Its reports are available to all General Motors divisional engineers and daily reports are filed at Lansing with the Michigan state weather department.

Here is a hypothetical instance of the manner in which the weather house assists the engineer in

the precise task of measuring an automobile's merit:
The Chevrolet engineering division, in checking back on the performance of one of its "Bigger and Better" models, might find that on May 9th, its gasoline consumption exceeded slightly that of the preceding and following days. It might be found, too, that a little more water was required for the radiator and that fluctuations were noted in the speed, none of which effects would be discerned by the average driver.

Chevrolet engineers will set out to find the cause of these variations. And one of the first aids they will call upon is the weather recorder.
In checking back with the graphic weather records, the engineers might find that the wind velocity varied on May 9th between six and ten miles an hour. On May 8th and May 10th it remained below five miles an hour throughout the day. Thus the engineers know in making their comparisons that the wind was a factor in the change and to what extent. In like manner they are able to tell exactly what effect the sunshine, rain, humidity or snow had to do with performance fluctuations on any given hour of any given day. This definite knowledge is a vital help in developing new models and in adjusting old ones.

The China pheasant season opens October 15. Hunters are cautioned not to mistake a Chinaman for a bowl of chop suey, and avoid a laundry.—Medford Mail-Tribune.

Turkish beggars, scorning the small sums they receive, are demanding more money. Why don't they copy the American method, rent offices and buy a sucker list.—Astoria Budget.

CRATER LAKE PARK HAS BUSIEST YEAR

With the closing of the travel year at midnight of September 30, Crater Lake National park surpassed all previous records with a total travel of 113,323. This immense stream of visitors entered in 34,869 automobiles and represented every state in the Union and fourteen foreign countries. This was an increase of 37.6 over last year's total of 82,354 people and 25,667 automobiles.

Never before was there such a great diversity in origin of Crater Lake visitors. Every continent was represented and all of the principal island groups, Australia, the Philippines, Hawaiians, British Isles, East Indies, etc.

It is a source of greatest satisfaction to park authorities that this great travel was handled without a single serious accident. No visitor sustained an injury throughout the year and, bespeaking the fine spirit of national park visitors, there were no arrests for crime or misdemeanor throughout the year. The year also established a record as to forest fires, not a single acre of park forests being burned and not a single dollar being paid out for direct fire costs, the only charges being indirect charges for fire prevention.

Road Work Ended
All roads and trails construction work has been shut down for the season and the principal crews laid off. Park work is now restricted to the fall conditioning of roads, particularly the Rim Road. This Rim Road is now closed to travel until next year, as are also the East Road and the Diamond Lake Road. The Klamath and Medford roads are in beautiful

condition and will remain open until snow closes the park probably early in November. A ranger force and small maintenance crews will remain on station until the onset of severe winter, when there is no other activity in the park except the periodic patrol.

Union Air Lines, Inc. Owners and Operators of WEST COAST AIR TRANSPORT CO.

Operating under certificate approved by U. S. Dept. of Commerce



From Portland:
To Seattle and Tacoma, 8 a.m., 2:30 p.m., 5:12. To Medford, 8:30. To San Francisco, 8:30 a.m., Monday, Wednesday and Friday, 8:45. Los Angeles, 9:00. "Have You Been Up?" A delightful Henry Thiele lunch with hot coffee is served on route to San Francisco.

Services: A passenger enclosed plane, smoking room, lavatory and drinking water. **Safety:** We are practical transportation operators of years of experience.—Our engines are new.—Mechanical experts check up equipment after every flight. We operate on regular schedule only. Before setting off our pilots are furnished with weather conditions for the entire trip.

The safety of the Passenger is the paramount consideration of the Company.—Our service proves it—approximately 5000 passengers carried.

Tickets and Information Hotel Senator, Phone 696

"Western Auto's" Mid-Fall Tire and Tube Sale!

The inauguration of a timely event that will save thousands and thousands of dollars for motorists throughout the west...! Summer is ended... vacation tours are over... tires are worn from long trips... Winter rains and snows with slippery roads approach, and new, safe, long-lasting, economical, non-skid "Western Auto" Tires are a necessity.

SAVE at any "Western Auto" store during this big economy event, on tires and tubes that have earned the friendship and confidence of hundreds of thousands of car owners. Tires and tubes with a proven record of mileage and economy. Tires and tubes that are backed by the reputation for honesty and fair dealing of the world's largest retailers of Auto Accessories, with more than 150 conveniently located stores to give you service, and to back up our Iron-Clad Guarantee of Satisfaction and our CUSTOMER IS ALWAYS RIGHT policy...!

Wear-well Balloons		Western Giant Balloon	
Size	Price	Size	Price
28x4.40	\$5.94	30x4.40	\$6.51
30x4.50	6.55	32x4.50	7.27
30x5.00	8.79	32x5.00	9.83
31x5.00	9.86	32x5.25	10.48
30x5.25	9.65	31x5.25	11.26
31x5.25	10.41	30x5.75	13.29
30x5.75	11.36	32x6.00	14.87
32x6.00	12.97	32x6.50	15.53

Tires Mounted FREE

Wear-well Balloon

SAVE AT THESE SALE PRICES

New-Improved WESTERN GIANT BALLOONS

with SAFETY TRACTION Tread

-also on Sale!

These new tires have been specially designed to meet the needs of modern motoring. They provide extra traction and safety, besides having longer-wearing treads, and extra quality construction through and through. Note the continuous center and side running strips that give longer life, and make steering steady, safe, and easy all around corners, and the cross slots that hold the road on any sort of going.

Western Giant Balloon

ASK FOR SALE PRICES ON ANY SIZE TIRE OR TUBE NOT SHOWN

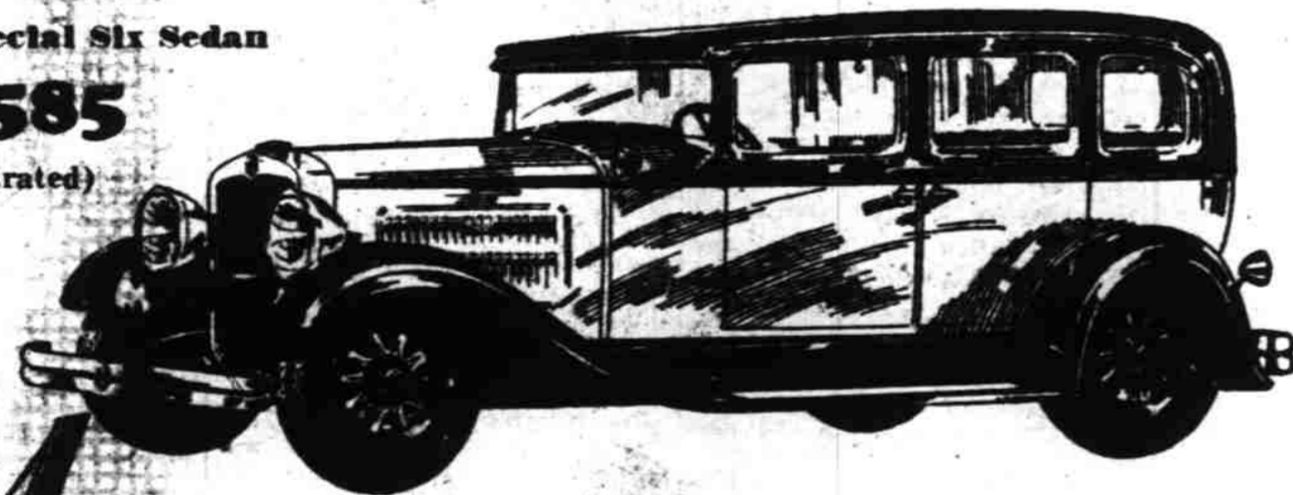
Wear-well Cord		Western Giant Cord	
Size	Price	Size	Price
28x4.40	\$7.46	31x5.25	\$12.78
30x4.50	8.41	32x5.00	13.73
30x5.00	10.78	32x5.00	17.08
31x5.00	11.30	32x5.00	17.82
32x5.00	11.98	32x5.25	19.72
30x5.25	12.31	32x5.75	23.30

Blue Ribbon Tubes		Jumbo—Extra Thick	
Size	Price	Size	Price
30x3 1/2	\$1.25	32x4 1/2	\$2.70
32x3 1/2	1.84	32x4 1/2	2.97
30x3	1.25	32x4	2.97
32x4	1.98	32x4	3.19
32x4	2.30	32x4	3.39
32x4	2.30	32x4	3.55
32x4	2.55	32x4	3.50
31x4	1.75	32x4	3.71

"Western Auto" Service—More than 150 Stores in the West—**Western Auto Supply Co.** The World's largest retailers of Auto Supplies... Serving the motorist since 1916. Guaranteed Accessories, Tires, Camp Goods, Golf Equipment and Radio.

THE WORLD HAS A NEW AND FINER MOTOR CAR

"400" Special Six Sedan \$1585 (as illustrated)



Motor Cars of the Future will be low, slender, graceful, like the NASH "400" today

NASH has achieved tomorrow's motor car vogue in the Nash "400", today.

Every line and contour of the new Salon Body style suggests the fleet, clean-cut profile of the thoroughbred. The "400" models are, in many cars, but without excess bulk, smart cars without exaggeration. They are low, slender, and graceful.

You only need to compare the appearance of the "400" to that of the other new cars

of the year, to know definitely that you would rather have the Nash.

You only need to drive the "400"—to steer it, park it—to know that here is exactly the kind of a car you've always wanted to own. Its new Twin Ignition performance and ease-of-handling are easily the year's most important additions to the pleasure-of-motoring.

We'll give you the key to any model you care to drive. Then, we'll leave it to you!

9 Sedans from \$1,995 to \$2,265, Salem—8 Coupes, Cabriolets, Victorias from \$1,080 to \$2,040, Salem

NASH "400"

Leads the World in Motor Car Values

IMPORTANT "400" FEATURES—NO OTHER CAR HAS THEM ALL

- Twin-ignition motor
- 12 Aircraft-type spark plugs
- High compression
- New double drop frame
- One-piece Salon fenders
- Hoodless and Lovejoy shock absorbers (exclusive Nash mounting)
- Aluminum alloy pistons (lower stress)
- 7-bearing crankshaft (better road pilot)
- Bijur centralized chassis lubrication
- Salon Bodies
- Torsional vibration damper and rear bumpers
- World's easiest steering
- Electric clocks
- Short turning radius
- Longer wheelbases
- Nash Special Design fenders and rear bumpers
- Exterior metalware chrome plated over nickel
- Clearvision from pillar posts

F. W. PETTY JOHN CO.

365 North Commercial Street

Telephone 1260

"AFTER WE SELL—WE SERVE"