

HEATING PLANT HELPS HEALTH

Modern Builder Plans Home With View to Both Hygiene and Comfort

That the average warm air heating system which is more than ten years old is far behind the advance of scientific discoveries in warm air heating is the declaration of heating experts of the Holland Institute of Thermology, Holland, Mich.

"Modern warm air heating is the most economical and efficient of all forms of providing warmth in the home," according to the institute, "but up to ten years ago the installers of warm air systems relied on rule-of-thumb methods. The pipes of the average installation of early days were too small to carry enough heat to warm the room properly. Often they were installed without enough slope to insure a continuous flow of heat. In many instances, they contained sharp angles which retarded passage of air and some installers specified furnaces too small for the houses they had to heat."

Science Aids Installer
"Today, however, the up-to-date furnace installer has at his command scientific data that enable him to estimate with decimal accuracy the needs of a home and the size of the equipment to supply those needs. Adequate pipe sizes, sufficient slope to insure rapid flow of warm air, short heat runs and a host of other factors are all part of his calculations."

"Of course, the most important factor in modern warm air heating is the improved design of the furnace. The old-fashioned warm air furnace contained many joints to leak heat or smoke. Today, the standard warm air furnace is designed in only seven pieces, or castings, which are fitted together with double cup-joints sealed with asbestos cement. The modern cone shaped grate effects material savings of fuel through improved combustion, which extracts the last possible heat-units from the fuel. The same may be said of the modern slotted firebox."

Humidity Supplied
"Filling the water pan was a task frequently forgotten with the old warm air heating plant. The newer practice is to provide an automatic humidifier, which may be turned on in the fall and then forgotten during the rest of the heating season. Whereas the old type water pan turned a gallon of water a day into healthful moisture for the air in the home, the new automatic humidifier evaporates from 3 to 25 gallons a day, making the ideal relative humidity of 40 per cent easy to maintain."

The latest advance in the science of warm air heating, according to the review of the Holland Institute of Thermology, is the introduction of a motor-fan unit which substitutes mechanical propulsion of the air for the force of gravity. It provides "super-circulation" of vaporized warm air in place of the old gravity circulation. Thus far, according to the institute, only the leading producers in the industry have made this improved equipment standard.

VICTORY SIX LINE BODIES ENLARGED

Longer and roomier bodies affording greater vision in all closed models of the Victory Six line have been announced by Dodge Brothers. The new type bodies now in the hands of all dealers are available in the sedan, sport sedan, coupe and coupe-brougham. In designing the changes, engineers have retained the Victory Six roadability featured by its low center of gravity and sweeping, graceful appearance.

DODGE BROTHERS HIT HIGH RECORD MARK

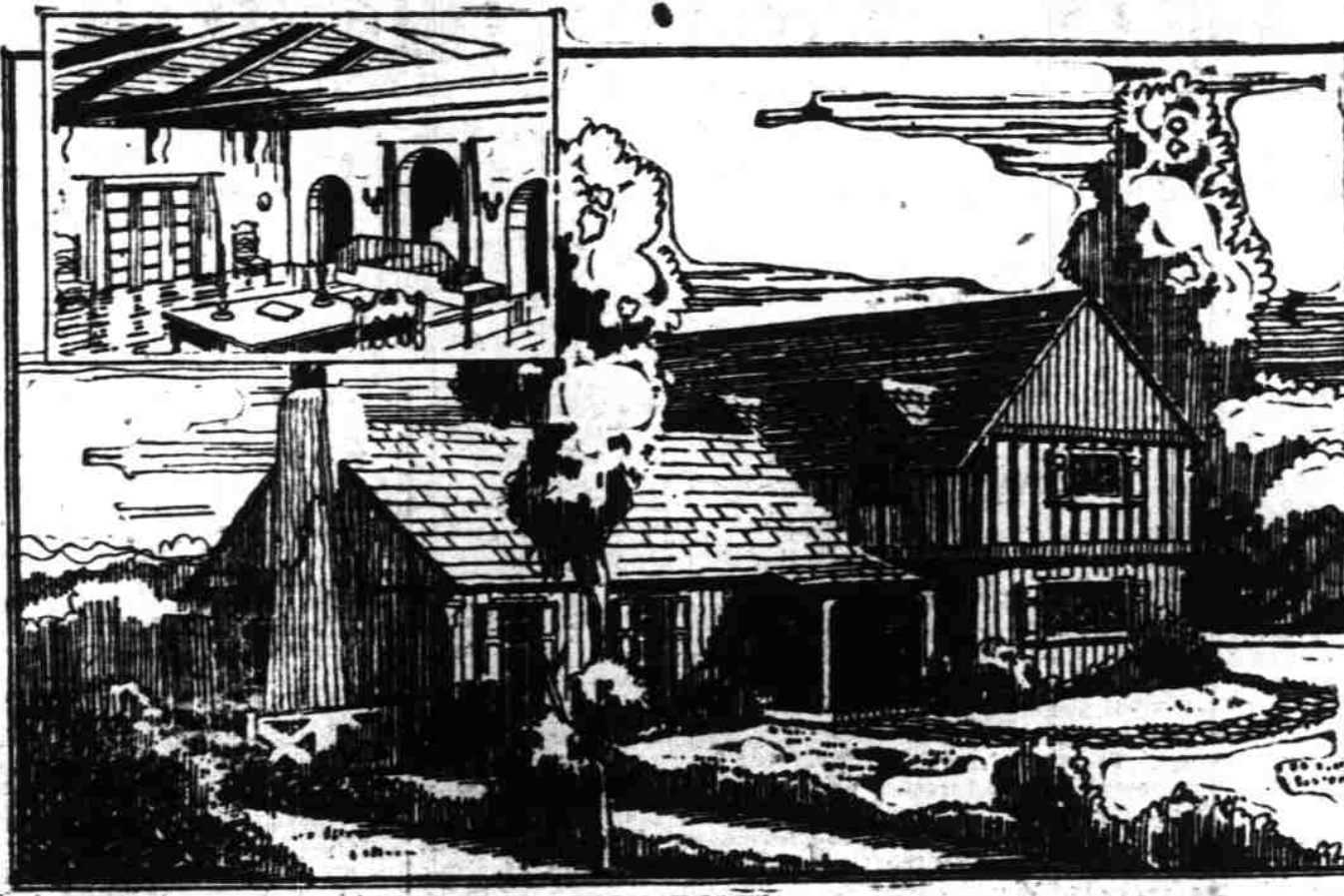
Shipments of Graham Brothers trucks from Dodge Brothers factories in August, set a new record for any month in 1928, exceeding July this year by 10 per cent, and a 60 per cent increase over August, 1927. The figures represent the combined shipments of the plants in Detroit, Toronto, Evansville, Ind., and Stockton, California, the latter plant reporting the best month in history.

"We accept this record as conclusive evidence of general public acceptance of Graham Brothers six cylinder trucks, commercial cars and motor coaches," said John R. Lee, general sales manager. "Our bank of unfilled orders continues to represent an unprecedented volume, and we anticipate that September shipments will show substantial gains over September, a year ago."

The increased volume of business is reflected by the fact that retail deliveries of Canadian dealers were three and one-half times greater in August than in August, 1927, while shipments to overseas dealers showed an increase of 43 per cent in the same period.

With the recent announcement of the 3-ton truck, Graham Brothers

England Comes To America



Courtesy California Redwood Association

WHEN English settlers came to this country three hundred years ago they brought with them ideals of architectural beauty which have profoundly influenced our methods of house planning. Today, we are still building some of the older English forms of houses such as the Tudor type which is so appropriate to modern conditions.

For instance, the five-room Tudor home shown here retains the essential features of the old English manor houses and yet it is small enough to be built to good advantage on a fifty foot lot.

Stucco and Timber
From the exterior, the outstanding points of interest are the stucco and timber walls with the sweeping, gracious roof. By painting the timbers a dark brown and painting the stucco a soft buff, a mellow effect is attained which will be enhanced if the shingles are stained soft shades of brown, green and red, then laid in such a manner that the hues form irregular masses of color which are so skilfully blended as not to be blatantly noticeable. Window sashes and shutters in a warm blue or a soft bluish green will add another welcome note of individuality.

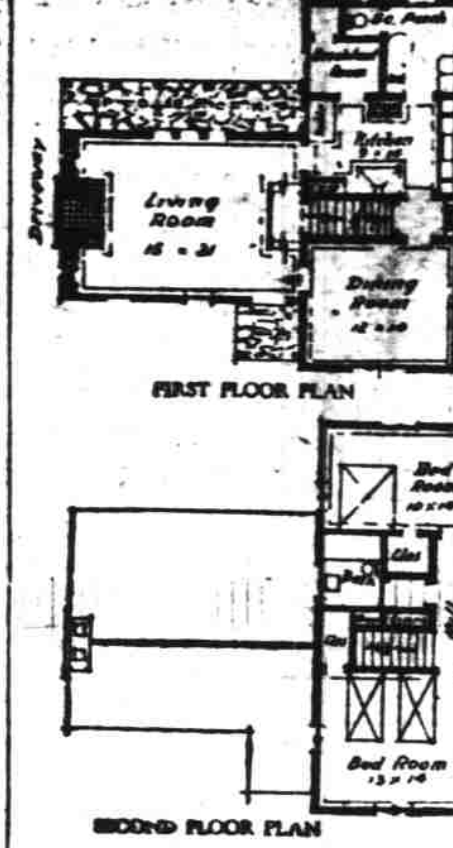
On entering the house, one finds himself in a large living room made gracious by the generous-sized fireplace and the beams of the high-ceiled roof. Woodwork stained a soft brown, then given several coats of varnish and rubbed down to a soft glow is especially appropriate in this type of room. If the walls are painted a soft, neutral tan, the hangings and rugs can lend color and vivacity

to the room; on the other hand, walls of a pale, sage-green will mean that the room furnishings may be of a more subdued type. With its French windows on either side, the small windows by the fireplace and the openings into the kitchen and dining room, this inviting resting place will, in effect, have four exposures—a factor making for summer coolness.

Use Some Color
On the same floor are a dining room, kitchen, breakfast room and screen porch, all of excellent dimensions and well planned both in respect to each other and for the uses they will be put to and furnishings which they will need.

In the kitchen, a color scheme can easily be worked out in window shades, faces west, the kitchen windows will be on the south, thus gaining enough sunshine so that no special effort need be made to add light. For that reason a light jade or apple green is a desirable choice for the basic color. With walls of that hue and woodwork of ivory, color accents in light tan can be applied as bandings along the moldings and on the inside of the cupboard doors. The breakfast room, which opens off the kitchen, may be carried out in the same hues.

Upstairs are a bathroom and two bedrooms with most adequate closets. Each of the bedrooms with its three exposures will be cool and comfortable and yet will be light. Casement windows with light tan can be applied as bandings along the moldings and on the inside of the cupboard doors. The breakfast room, which opens off the kitchen, may be carried out in the same hues.



beautiful in such a room, but if you prefer the more modern furniture painted in tones of yellow or green or rose, it is perfectly appropriate and, indeed, is very charming.

Although this house is a small one, containing 1641 square feet, it gives an effect of spaciousness due to the clever way in which the floors are arranged to secure the most living room and the least waste space.

HUPP ADDS BIG UNIT TO PLANT

New Building Due to Double Shipping Capacity, Say Officials

To keep pace with the continuing heavy demand for Huppobile cars which has been causing unbroken series of new monthly records for production and shipments ever since the Century Sixes and Eights were introduced last winter, the Hupp Motor Car Corporation announces that contracts have been let for a new unit of its Detroit plant, which, it is stated, will double the shipping capacity of the company.

Operations on the new building are to be pushed as rapidly as contractors can carry on the work and it is predicted by company officials that the structure will be ready for occupancy by the first of the year. Ground has already been broken and excavation is well underway.

An Additional Unit
The additional unit, which is to be of concrete slab construction, is conveniently located on property recently acquired by the company just east of its main plant. Designers show liberal provision for storage of new cars while awaiting shipment after they come off the production line, as well as adequate space for the Huppobile engineering division, which will be quartered in the new building.

The plans provide for an eight-story building, fronting a little more than 200 feet on Mt. Elliott avenue and running back to a depth of approximately 150 feet. Seven of the eight floors will be devoted to car storage purposes, the top floor being given over to offices of the engineering department and the basement housing

the engineering laboratory. Shipping docks and tracks are included in the project. A bridge across Mt. Elliott avenue will provide means for transporting finished cars from the main plant to the new storage unit.

Enormous Demand
The record breaking demand which has led to the Huppobile plant expansion now announced set in with the introduction of the new Century Six last October. It was enhanced materially with the appearance of the Century Eight model in January, and the popularity of the two lines was still further stimulated by the enthusiastic reception extended to the 1929 Century cars when they were presented early in August. As a result, the sales of Century cars, in their first nine months reached a volume considerably larger than any ever attained by the company in an entire year of its twenty year history, and indications now are that the year of 1928 will roll up a total of 75,000 cars produced and shipped, compared with a previous high mark of barely 45,000.

ANCIENT AUTOS TO GET RECOGNITION

"Real first families of motor-dom should be brought before the public's admiring gaze next January," says Dr. E. B. McDaniel, director of the American Automobile association, commenting upon the contest recently announced by the National Automobile Chamber of Commerce which has for its purpose the discovery of the oldest car in America.

"We of the American Automobile association have reason to be interested in this unique contest conceived by our sister organization," says Dr. McDaniel in commenting upon the plan which contemplates exhibition of the prize-winning car at the New York automobile show in January. "The A. A. A. was established

in 1902, when motor-dom was more of a name than anything else. The chamber's stipulation that only cars built before 1900 will be considered as eligible in its contest is going to limit the number entered to a considerable extent. There are plenty of old cars in the United States, and plenty of them still running, but when you get back in 1900 you're getting into the ancient class.

"Still, a contest like this probably will bring out a surprising number of vehicles of proud and lengthy lineage. Frankly, it strikes us as being a great idea, and we're going to watch the outcome with real interest. The 'horseless carriage' that wins certainly will deserve the homage which the show crowds are sure to bestow."

Paving Program May Be Finished

With good weather continuing.

Hawkins & Roberts, Inc.

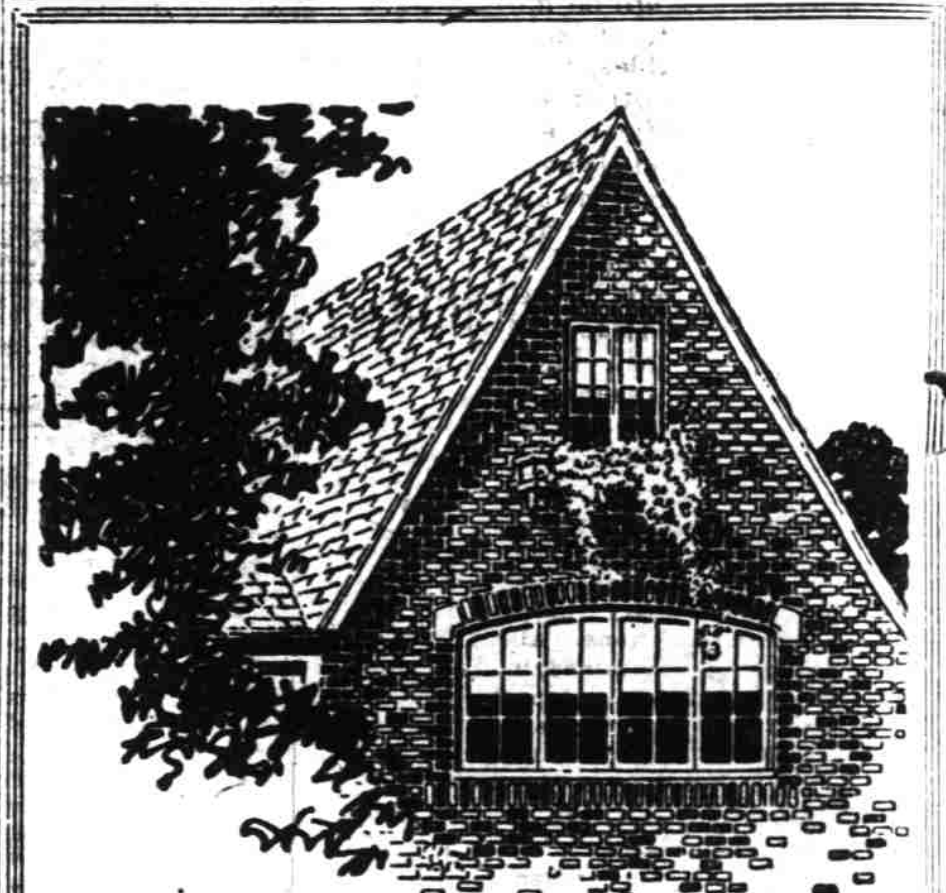
Residence Loans
Straight or Monthly Payments
205 Oregon Bldg.

Mutual Savings and Loan Association

A Salem Institution Organized in 1910

Place your savings with us
Let us finance your home on weekly or monthly payments

142 South Liberty Street



—"and I don't worry about upkeep and depreciation"

"WITH the old house I used to spend a lot for outside painting and then in a year or so it would begin to get so shabby again that we'd hate to look at it. But that's all changed since we built with brick. Vines grow along the walls and every year adds to their beauty and distinction instead of marring them."

It's nice to be rid of the constant struggle to keep an old house looking spick-and-span—to just let it grow old gracefully and know that it looks more homelike as it ages.

That's one of the advantages of brick construction—but there are many others that will interest you. Let us send you information that will help you in deciding how to build your home.

If you are planning to build a new home or buy one, it will pay you to consider the advantages of brick.

Write for This Book Today—It's Free

PACIFIC NORTHWEST BRICK AND TILE ASSOCIATION
for Details

913 Arctic Bldg. Seattle Elliott 3643

Or in Salem, Telephone 917

The Salem Brick & Tile Co.

Information about brick construction, costs, plans will be given

Or we will recommend a brick contractor who can give you any additional information about your proposed construction.

MEXICO TO HELP BUILD HIGHWAY

MEXICO CITY, Oct. 20.—(Special)—Delegates to the Second National Mexican Highway congress and exposition left Mexico City today after a two weeks' inspection of highways in Mexico under the auspices of the Pan-American Division of the American Road Builders' association. Several hundred delegates from twelve countries attended the congress, of which two hundred and fifty were from the United States.

Assurances that Mexico is anxious to cooperate with the United States in the completion of a Pan American highway were given the delegates by President Plutarco Elias Calles and President-elect Emilio Portes Gil.

"The construction of such a highway would be the strongest possible bond to cement the friendship of the two republics," President Calles told the delegates. "The budget for the current year contains ten million pesos for highway construction."

DODGE BROTHERS HIT HIGH RECORD MARK

Shipments of Graham Brothers trucks from Dodge Brothers factories in August, set a new record for any month in 1928, exceeding July this year by 10 per cent, and a 60 per cent increase over August, 1927. The figures represent the combined shipments of the plants in Detroit, Toronto, Evansville, Ind., and Stockton, California, the latter plant reporting the best month in history.

"We accept this record as conclusive evidence of general public acceptance of Graham Brothers six cylinder trucks, commercial cars and motor coaches," said John R. Lee, general sales manager. "Our bank of unfilled orders continues to represent an unprecedented volume, and we anticipate that September shipments will show substantial gains over September, a year ago."

The increased volume of business is reflected by the fact that retail deliveries of Canadian dealers were three and one-half times greater in August than in August, 1927, while shipments to overseas dealers showed an increase of 43 per cent in the same period.

With the recent announcement of the 3-ton truck, Graham Brothers

DRY FUEL GIVES BETTER MILEAGE

On a long, hard trip when you want to hold down expenses—then it is you watch your motor fuel most closely. And what you learned on a trip like that will give you valuable pointers on the daily operation of your car at home.

Reliable checks on gasoline mileage on long runs show unusual results when the fuel used is Shell 400, the new "dry" gas. Because Shell 400 goes completely vaporized into the cylinders, it burns evenly and thoroughly. More of it goes into power, none is wasted. Ordinary "wet" gasoline, on the contrary, is only partially vaporized when it enters the engine, so that a considerable portion of its condensates on cylinder walls and drains into the

Bread War Seen As Probable For City Of Portland

PORTLAND, Ore., Oct. 20.—(AP)—A "bread war" was predicted here today in certain sections of the baking business, as the result of three large baking companies placing on the market last Monday a new loaf of bread, selling two cents below the price of the standard loaf, and action by several other companies in meeting the new price schedule.

A New Method of RE-ROOFING

Saves You Money — Adds to Comfort

No need to remove your old roof—lay Red Cedar Shingles right over the old roof.

A thoroughly practical method has been worked out—saves removing old roof, avoids litter, improves appearance of house, adds amazingly to warmth and comfort.

We'll be glad to supply details, illustrated folder, estimate—also the shingles. We provide a complete shingling and re-shingling service. Don't re-roof until you investigate.

Call on Phone for Fuller Particulars

J. W. Copeland Yards

Yards in West Salem, Albany, Lentz, Hubbard, Yamhill.
WEST SALEM—TELEPHONE 578

PHONE 1812 SALEM, ORE.

Frank H. Struble Architect

512 Bank of Commerce Bldg.
"Yours for better buildings in the Salem district"

Build with High Quality Lumber

GABRIEL POWDER & SUPPLY CO.
High Quality Lumber

"There is no substitute for taking pains. There's nothing to take the place of money's worth. There's no better building material than high grade lumber."

—says Practy Cal.

LUMBER and All Building Materials

Gabriel Powder & Supply Co.

Office, Yard and Warehouse
610 North Capitol Telephone 2348