

# PATENT RIGHTS BEFORE COURT

### DeForest - Armstrong - Issue Regarding "Feed-back" to be Settled

WASHINGTON, Oct. 16.—(AP)—The De Forest-Armstrong controversy, the first big radio patent case to reach the nation's highest tribunal, will be fought out in the supreme court this month. The case involves invention priority rights of Lee DeForest and Major Edward H. Armstrong, distinguished radio inventors, to the "feed-back" or regenerative circuit in receiving sets. It was carried to the supreme court by the Westinghouse Electric and Manufacturing company, purchaser of the Armstrong patent, which asks a review of the recent decisions in federal courts awarding patent rights in the circuit to the DeForest Radio Telephone and Telegraph company. The Westinghouse company contends that a final decision is imperative as the business of man-

ing and selling apparatus using the "feed-back" amounts to millions of dollars annually. In Courts Long Time The case has been in litigation for eight years, with both sides winning court contests. In 1920, a New York court ruled that Armstrong had prior rights. This decision was affirmed by the circuit court of appeals, and in 1923 the federal court of appeals in the District of Columbia, and Pennsylvania and Delaware courts subsequently held Armstrong's patent to be in conflict with two DeForest patents. These opinions were affirmed by the Circuit Court of Appeals for the third circuit. Arguments before the supreme court will be made by a formidable array of opposing lawyers, including Charles Evans Hughes, chief of counsel for the DeForest company. A "bathub" variable condenser, which takes its name from the type of frame employed, is included in the new-fall apparatus. The condenser, the design of the DeJuramsco corporation, is available in .00035, with single or multiple sections.

## She Is Director



ALICE MASLIN ST. LOUIS, Mo., Oct. 16.—(AP)—As program director of station KMOX, Miss Alice Maslin has nearly as many duties as the small town mayor. Listed among her tasks are: Assistant to the station manager, concert pianist, accompanist, narrator, booker and continuity writer.

# PROBE SHOWS RADIO WAGES

### Federal Inquiry Bares Pay Schedule in Stations Throughout Nation

WASHINGTON, Oct. 16.—(AP)—Employees engaged in the manufacture of receiving sets receive an average weekly wage of \$23.25, according to a survey made by the Department of Labor in the radio manufacturing industry. Earnings ranged from \$13.94 for female packers and wrappers to \$44.06 for male tool and die makers. Agents of the bureau of statistics visited establishments in Illinois, Massachusetts, Michigan, New Jersey, New York, Ohio, Pennsylvania and Rhode Island. The radio manufacturing industry is quite seasonal as there are several months in the year in which very little work is done, the bureau points out. Data for the survey was obtained in periods in which the establishments were working full time. In the manufacture of loud speakers, the average weekly earnings ranged from \$12.93 for women repairers to \$41.88 for tool and die-makers, the average for all employees being \$22.87. The average number of days on which employees worked in one week ranged from 4.6 for repairers to 5.9 for testers. In 23 receiving set establishments, 13 paid additional for overtime work. Three of the factories had bonus systems in operation, two being based on production and the other on attendance. In the latter, employees losing no time during the week were paid \$1 additional. The average weekly earnings in the radio tube industry ranged from \$14.37 for filament tube testers to \$28.10 for electric testers, the average for all employees being \$20.36.

# WAVE CHANGES MAY AID DISTANCE HUNT

### Revelation of Interest in Distance Hunting is to be Expected from the Reallocation of Wavelengths, Effective November 11, Gordon C. Sleeper, Radio Authority, Believes

NEW YORK, Oct. 16.—(AP)—Revelation of interest in distance hunting is to be expected from the reallocation of wavelengths, effective November 11, Gordon C. Sleeper, radio authority, believes. "Although there are almost always good programs from the local stations, it cannot be denied that the picking up of a distant station is far more thrilling than tuning in on the home town broadcaster. With a good set, there should be no reason why radio fans on the Atlantic coast cannot hear the powerful western and Pacific coast stations if the radio commission's plans work out as expected."

## Solon Broadcasts



SEN. R. B. HOWELL OMAHA, Neb., Oct. 16.—(AP)—Senator R. B. Howell, republican, of Nebraska, takes along a portable radio transmitter when he goes vote-hunting in his campaign for reelection. While traveling, he carries the transmitter in an automobile, and sets it up when he stops to make a speech. AUTOS CARRY RADIO PARIS, Oct. 16.—(AP)—Armored automobiles carrying radio outfits were an important feature of the autumn maneuvers of the French army. A steel mast at the side of the car which could be released or lowered, was the antenna support. Short wavelengths were used. HEATER TUBE IMPROVED CAMBRIDGE, Mass., Oct. 16.—(AP)—Commenting on radio developments in the past year, Fred D. Williams, radio manufacturer, says that the outstanding feature is the refinement in the 27 AC heater tube. The improvement, he adds, is certain to have a far reaching influence in the design of electrified sets.

# Light Transmission Opens Big Field of Experiment

NEW YORK, Oct. 16.—(AP)—Television, now being given a front place in radio, has opened wide vistas for experimentation. The obstacles to satisfactory transmission and reception of instantaneous light are many, and there will be few if any commercial television receivers, engineers say. It is only the scientist and the experimenter with a wide knowledge of radio who can obtain results with the present equipment. How long the public must wait for television reception in the home on a par with sound radio, the engineers are unable to indicate. But they see great possibilities for those radio fans who are never satisfied unless they are conducting some experiments. Progress Rapid Progress so far has been comparatively rapid, and as light transmission is taken up by more and more broadcast stations, greater development is expected. Transmitters now sending out "television programs" are few and are centered in the larger communities, such as New York, Chicago, Boston and Washington. The season ahead is expected to feature the offering of many television components for the experimenter, who, like the engineer, is faced with such problems as improvement in photoelectric cells, more sensitive relays, better amplifiers and neon tubes, microscopic speed control of the scanning disc motor and others. Still Far Away Any discussion of television seems to emphasize the fact that its appearance in the form of a commercial receiver or reproduc-

## Air Station Talk

By the Associated Press The winter programs of the Reese Popular trio have been resumed over KOA, Denver. WPSO, the Pennsylvania State college station at State College, Pa., has resumed its broadcast schedule, which will include Saturday football games and Sunday chapel services. B. C. Riley, dean of general extension work for the University of Florida, has been named director of WRUF, the new university station at Gainesville, Fla. The station is to conduct a "university of the air." Four series of radio concerts for children are to be given by Walter Damrosch, beginning Oct. 26. They will be broadcast by WFLA and 25 stations each Friday morning. The first series is for third and fourth grades, the second for Grades 5 and 6, the third for Grades 7, 8 and 9, and the fourth for high schools and colleges.

# ALL ELECTRIC Majestic RADIO



ANYTHING YOU WANT Majestic gets them all PERFECTLY Complete SEE IT! HEAR IT! Then you'll know Model 71

## 7 TUBES

# VIBBERT & TODD

191 S. High Phone 2112 And the Market Phone 512

# NOT A SALE!



## ATWATER KENT RADIO

MODEL 40 uses 4 vacuum tubes and 4 A. C. tubes. \$81 without tubes

for a 1929 electric set puts so-called bargains to shame

WE wouldn't handle questionable goods. That's why we sell Atwater Kent Radio. And with the new Atwater Kent Radio and the new low prices—low because of the tremendous demand—you needn't wait for a sale to get a really good 1929 electric set at a reasonable price. You can't get more out of any radio. Come in today and let us prove it to you. And show you how we make it even easier to own with our Convenient terms

# C. S. Hamilton FURNITURE CO.

340 Court St. 467 COURT ST.

## BROADCAST OF BYRD EXPEDITION PLAN

PITTSBURGH, Pa., Oct. 16.—(AP)—Special broadcasts for the Byrd Antarctic expedition are being arranged. Pittsburgh: KDKA, WBZ, Springfield, Mass.; KYW and KFKX, Chicago, and WBZA, Boston, are to transmit messages to the explorers each Saturday night after 11 o'clock. Eastern Standard time. In addition special broadcasts are to be made from KDKA on Christmas night and from KYW-KFKX on New Year's night. This service will start immediately after the last contingent of the expedition leaves. Upon the finish of the winter schedule on February 23 messages will be sent out on an emergency schedule which calls for a stand-by every Saturday night at 11 o'clock.

## AUSTRALIA TO TAKE OVER ALL STUDIOS

SYDNEY, Australia Oct. 16.—(AP)—Transfer to government control of the broadcasting stations of Australia will involve an expenditure of \$400,000 to \$500,000, it is estimated. It is believed arrangements can be made with existing companies to take over their assets and introduce the new system before the expiration of existing licenses in November next year. The new policy contemplates that the government shall be the owner of the plant, equipment and mechanical means of broadcasting in all Class A stations and relay stations and provision be made for broadcasting of complete programs.

## All-American Mohawk Corporation LYRIC RADIO

NEW SETS

NEW FEATURES

NEW BEAUTY

NEW LOW PRICES

Come in and hear a demonstration

# IMPERIAL Furniture Co. Inc.

467 COURT ST.

# NEW IRADIO

## GIVES Startling Results!

YES, startling! Performance that is new to radio. Hear it and you'll see. Simply amazing results, thanks to a new radio discovery—

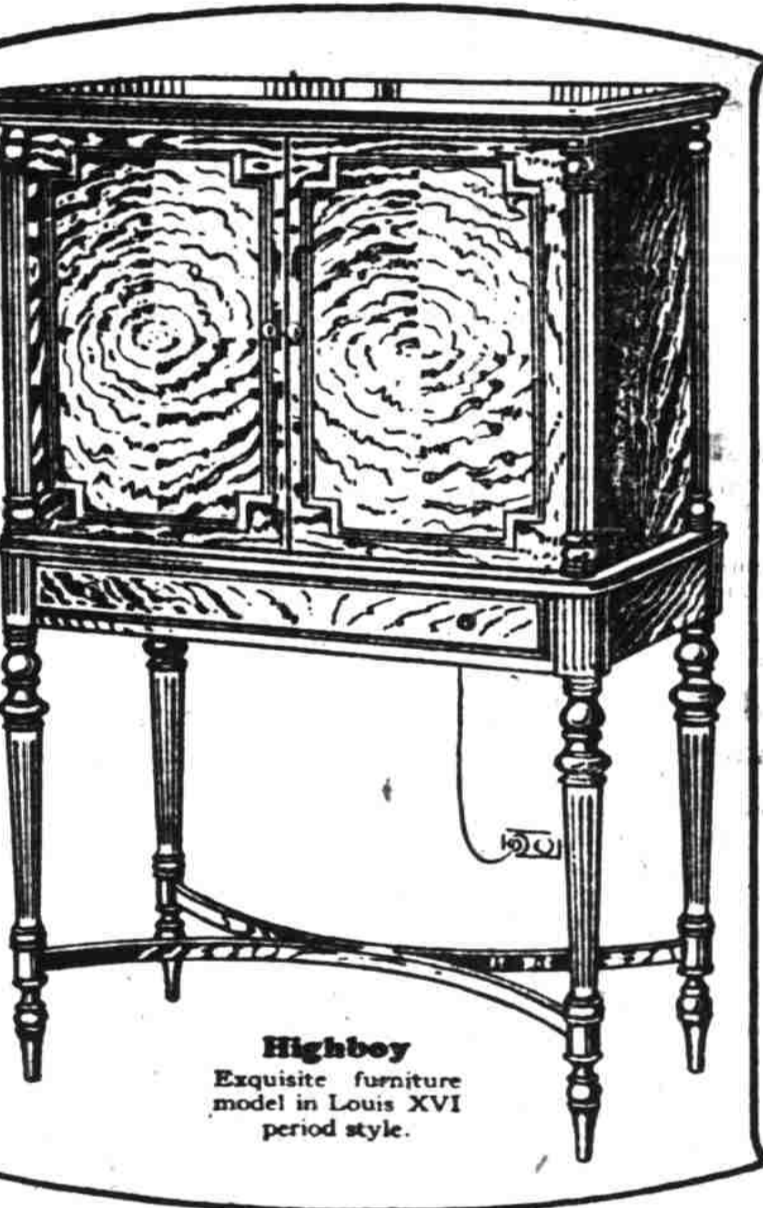
### "Neutrodyne-Plus"

Philco engineers have found a way to use Neutrodyne—famous for purity and tone—combining with it a PLUS—super-power which gives amazing distance range, selectivity and volume, —a combination new to radio!

**Distance** Now you can get and fully enjoy out-of-town programs! You'll get many low-power stations which the average set is not powerful enough to pick up.

**Selectivity** Marvelously sharp tuning! No more "groping." Stations come in clearly, sharply and without interference. One dial control—simple!

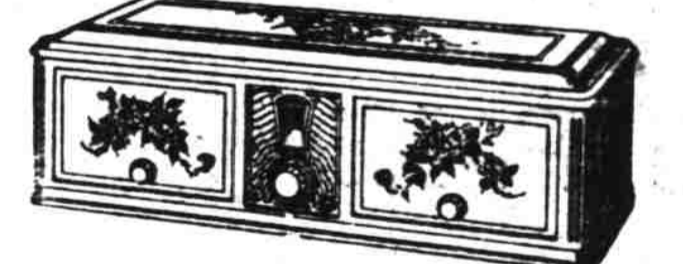
**Tone** An actual RE-production just as rendered before the microphone. Low notes and high notes flawlessly reproduced. Just hear and be convinced.



Highbay Exquisite furniture model in Louis XVI period style.

## Free Trial in Your Home!

Yes, we'll deliver the new Philco for you to try in your own home free! We'll just plug it into your light socket and leave it. Then operate it yourself—see how "Neutrodyne-Plus" gives you better performance and greater pleasure than you've ever had from radio before. If you're not delighted, we'll take the Philco back and that ends the matter. No obligation—no charge for the trial. It's free!



### Easy Payments

If satisfied—only a small down payment. The balance in easy monthly payments you'll never even miss!

### Trade-In Allowance

Yes, we will make you a liberal trade-in allowance for your old, out-of-date set. Now you can own the latest and best in radio without taking a dead loss on your old set. Come in—get our quotation. No obligation.

Come in—see and hear the Philco, or send the coupon. Get the full details of our liberal offer. No obligation.

### In Color

Now, for the first time, radio in color! Vivid colors to harmonize with the furnishings of your home. Your choice of five colors. Come in and see them!

And at a Price Furniture models at moderate prices—AND—the same Philco instrument in table models at popular prices! MAXIMUM Philco Performance no matter what price you pay.

## PHILCO Electric RADIO "neutrodyne-plus"

### or send coupon

H. L. STIFF FURNITURE CO. Salem, Albany, Silverton, Portland

GENTLEMEN: Please send me without obligation, descriptive literature on the Philco Electric Radio; also full details of your Free Trial, Easy Payment and Trade-In Allowance Offer.

NAME \_\_\_\_\_

ADDRESS \_\_\_\_\_

# Call-Look-Hear!

Bill Brazeau's Music Shop Things Musical

# H. L. Stiff Furniture Co.

COMPLETE HOUSE FURNISHERS

Easy Terms No Interest