

HIGHWAY WILL GET BIG SUM

6,000,000 to be Expended by California to Better Pacific Route

California will spend nearly 6,000,000 in the betterment of the Pacific highway by the end of its current biennium, announced C. A. Crowley, general manager of the Pacific highway association in quoting facts and figures from a report recently received from C. H. Purcell, state highway engineer.

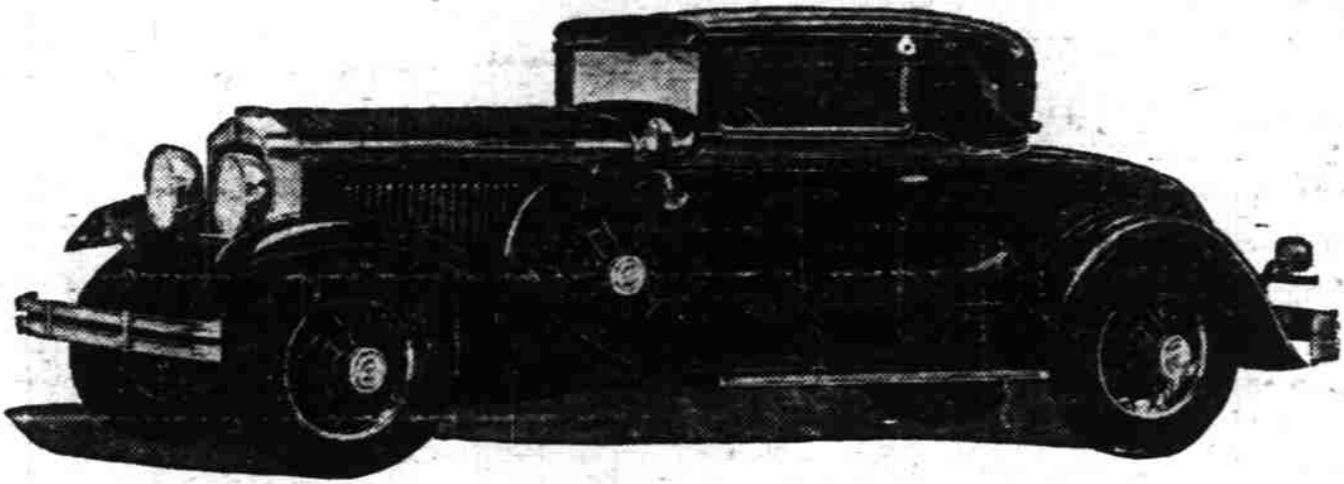
Work completed, under way, or advertised in carrying out plans for improving the Pacific highway, aggregate \$3,892,146.63, reports Purcell. Other work provided for in the present budget amounts to \$1,979,473.75, he adds. The grand total, \$5,871,620.38 will represent the reconstruction of 173.08 miles of this highway, according to the state highway commission of California.

Progress Rapid
Rapid progress in improving traffic conditions along this route is pointed out by the Pacific highway association as a fulfillment of part of the program recently announced by B. B. Meek, chief of the California department of public works in which the widening of the highway to 40 feet is to be included.

Some of the major projects now well under way in this work of reconstruction are listed as follows:

- 1. Provision is made for grading and laying a stone surface on the sector north of La Moine, Shasta county at a cost of \$893,233.06.
- 2. Paving and surfacing portions of a total distance of 24.89 miles between Santa Monica and Oxnard, cost \$844,900.66.
- 3. Realignment and surfacing of 10.75 miles between San Luis Obispo and Pismo, cost \$569,684.21.
- 4. These three leading items are being completed, states Crowley, who also quotes the sum of \$355,000, allocated for widening and resurfacing the Pacific highway in Contra Costa county between the Carquines Bridge and Richmond.
- 5. Brief biography: As a boy he turned the grindstone; as a man his nose was kept on it.—Toledo Blade.
- 6. How knowledge grows. Now that the sixth vitamin has been discovered, we know there are five others.—Detroit News.

Sport Coupe In Dodge Senior Line



Survey Shows Motorists Break Law With Impunity

WASHINGTON, D. C., Oct. 13.—(Special)—An average of one out of five motorists in the metropolitan areas is charged with violations of the traffic laws each year. This statement was issued by national headquarters of the American Automobile Association today, based on a questionnaire addressed by its safety department to police authorities of 50 cities, ranging in population from 50,000 to over 3,000,000. Complete returns were received from 18 and partial returns from others. Following are some of the striking facts developed by the survey of the national motoring body:

1. The number of persons charged with violations of the traffic laws in eighteen metropolitan centers in 1927 was 614,282 as compared to 77,940 ten years ago.
2. While car registration in these cities increased only 326 per cent in the same period, there was a gain of 688 per cent in the charges of traffic violations.
3. Only six cities, namely, El Paso, Texas; Los Angeles, Calif.; Minneapolis, Minn.; Worcester, Mass.; Chicago, Ill.; and Denver, Colo., showed a percentage of increase in car registrations greater than the gain in traffic violations.
4. Baltimore, Md., showed the greatest increase in violations of the traffic laws with a gain of 2975 per cent in the ten year period, while car registrations increased only 374 per cent.
5. Los Angeles, Calif., reported the greatest increase in car registrations with 1280 per cent, while the number of traffic violations gained 997 per cent.
6. "It is apparent from this survey," said the A. A. A., "that the multiplicity of traffic laws and regulations has resulted in a gain in the number charged with violation of the law far greater than the increase in number of motor vehicles. It shows in a definite way the need for uniformity in the basic rules for governing traffic, in order that the car owner may be free from the annoyance of arrest, which in many in-

stances is based upon misunderstanding of the different regulations in many cities."

Uniform Ordinance

The national motoring body pointed out that the uniform municipal traffic ordinance, recently prepared by eleven national associations concerned with traffic and safety, is specifically designed to remedy such a condition. "There is no more striking evidence needed to show the merits of this plan than the conditions revealed in this survey" the statement said.

"The number of traffic charges now facing police authorities in the metropolitan areas is greatly hampering the work of handling more serious violations of the law and is in addition a great source of annoyance to car owners."

"This condition is further complicated by the fact that hundreds upon hundreds of carrying traffic rules and regulations adopted by municipalities have bewildered the motorist to the extent that he is baffled in meeting the changing conditions."

"Only through some degree of uniformity, such as is proposed in the Uniform Municipal Traffic Ordinance, can it be hoped to regulate traffic successfully and with maximum cooperation from motorists of the nation."

A New Jersey man says he has invented a shock device that will stop an automobile instantly. Perhaps it is modeled after cement traffic posts. They have been known to work that way.—Detroit Free Press.

Machinery, it is predicted, will fight the wars of the future. And what will the coolies do then, poor things?—Hamilton Spectator.

PHAETON SURE TO COME BACK

Chrysler Official Predicts Open Car to Regain Its Popularity

Sparkling lines, bright colors and dashing appearance, combined with much special equipment and considerable design improvements over those of "touring cars" as they were built and known several years ago, are features Chrysler believes will win, for the phaeton it is announcing today as an addition to its "75" body styles, a popularity similar to that which the company achieved with its roadster when Chrysler began recreating "the vogue of the roadster" four years ago.

The new car has a custom body of five passenger capacity, with distinctive design that instantly attracts and holds attention. One for seven, also on the "75" chassis, is to accompany it soon.

"The design of the car is so pleasing in its appeal to the eye that it will attract immediate attention," says F. E. Sherwin, local Chrysler dealer (distributor). "Many of our regular roadster purchasers will be among its first purchasers. It will also be bought by many whose second car heretofore has been a coupe or two-door sedan."

Objections Overcome

"Objections to the types of five and seven passenger open cars, as they were known several years ago, were due to the air currents that proved bothersome to rear seat passengers at steady highway driving speeds, and to the inadequacy of the side curtains. Both these difficulties, apparent in the earlier days of the industry, have been overcome by Chrysler's modern design methods. Raising and lowering of the top of old style open cars, also difficult, can be easily as with any of the Chrysler done with this new phaeton as roadsters."

Changed tonneau construction includes rear doors and rear body lines higher, with windshield and integral folding cowl for the rear compartment offered as special equipment. Both this and the front windshield are of non-shatterable glass.

Flashing Color Scheme

The standard color combination is Mexican Turquoise blue, with moldings in Sarasota blue, striped with Ivory. Both blues are of light shade and, in combination, present a flashing appearance. This same distinctive combination of colorings is carried throughout the car, including wheel spokes, hub, felloe and brake drums, fenders, splash guards, radiator shutters, gas tank and cover, and other chassis parts. Tan-colored colonial grain hand-buffed leather is used for seat cushions, side arms and arm rests.

Top is of special construction and folds down completely when lowered. It is finished in tan, the fabric being thoroughly dyed, shrunk and waterproofed. All door curtains and the wide back curtain are removable, with space

for storing them. The tool kit compartment, built into the left front door, is equipped with lock and key. Much other standard and special equipment is included.

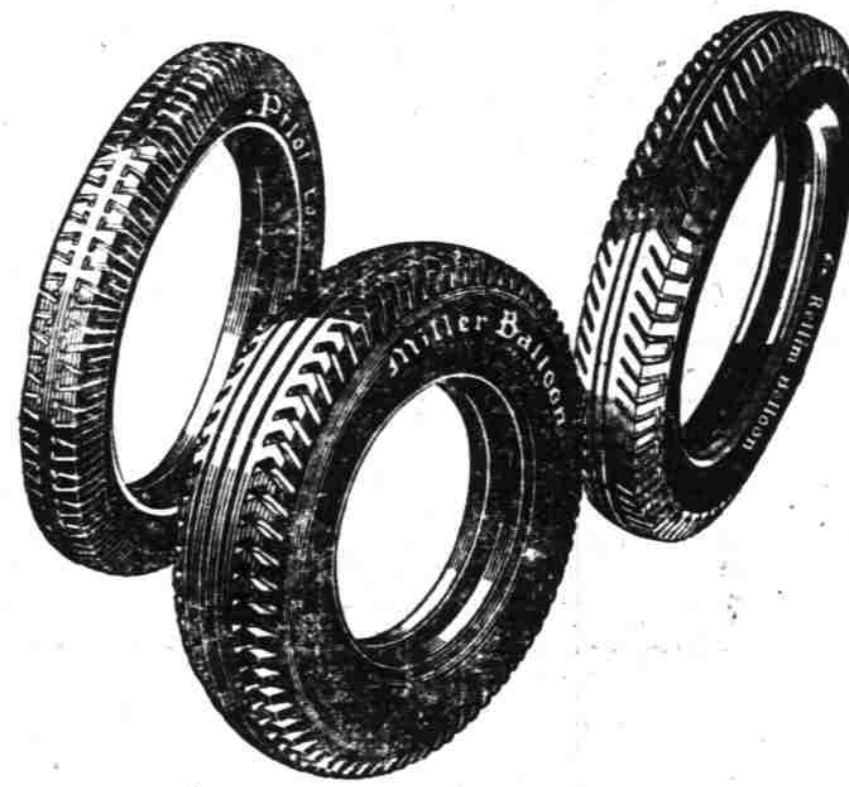
Quality!

Meets your Price in Miller Tires

REG. U. S. PAT. OFF.

WE LIKE to have you come to our store and tell us just what you want to pay for tires. That proves you are thinking first of quality. Because we don't sell tires we can't depend on to deliver the goods. No matter what price you want to pay—we have a Miller-Built tire to please you. And you can't go wrong on Miller quality—regardless of what you pay.

There's a Miller-Built Tire for Every Purse and Need!



Miller Tire Service

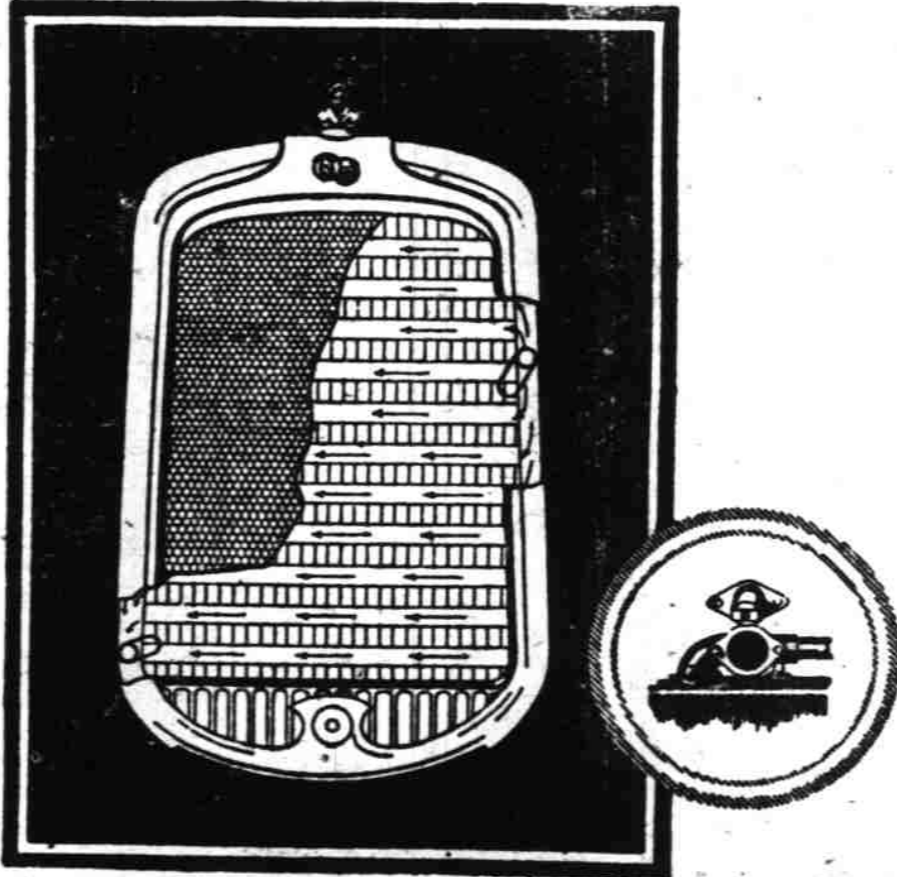
So. Commercial at Ferry — "Russ" Smith — Phone 318
ASSOCIATE DEALERS
Harbison Stations
Capitol at Market — West Salem — 1095 So. Com'l. St.

A GREAT ACHIEVEMENT

IMPROVED COLD WEATHER PERFORMANCE

Resulting from the

CROSS-FLOW RADIATOR



The cross-flow radiator consists of two side tanks, a top tank, and a core made up of horizontal passages. Water from the engine enters the inlet tank at the right, flows horizontally through the core and is pumped from the outlet tank at the left back to the engine. The thermostat which controls the temperature of the water is built into the upper outlet manifold.

Four important advantages result from the cooling system on the Pontiac Six and the Oakland All-American Six—a system which includes the famous cross-flow radiator. And all of these advantages contribute directly to improved cold weather performance, although some of them are equally valuable in climates where higher than ordinary temperatures prevail in summer. The cross-flow radiator reduces to a minimum losses of water and alcohol through boiling, one of the common annoyances of winter driving. And it also reduces possibility of damage if the water supply becomes low. The automatic thermostat, which is a part of this system, prevents water circulation until the engine reaches correct operating temperature. As a consequence the engine warms up quickly even though it has

stood over night in a cold garage. As a further consequence, less choking is needed and less dilution of crankcase oil occurs.

Because of the protection the cross-flow radiator provides against losses of water and alcohol, the Pontiac Six and the All-American Six require less attention in winter than cars not similarly equipped. Also, because they have the advantage of thermostatic water control, these cars reveal far better performance than other cars in their fields when the temperature is low.

The cross-flow radiator is available only on the Pontiac Six and the All-American Six. Come in. Let us explain its construction in detail. And learn while you're here of the many other advancements which only these two great General Motors Sixes provide.

2-Door Sedan, \$745; Coupe, \$745; Sport Roadster, \$745; Phaeton, \$775; Cabriolet, \$795; 4-Door Sedan, \$825; Sport Landau Sedan, \$875. All prices at factory. Check Oakland-Pontiac delivered prices—they include lowest handling charges. General Motors Time Payment Plan available at minimum rates.

VICK BROTHERS, Corner High & Trade Telephone 1841

Associate Dealers: Benton Motor Company, Inc., Corvallis, Oregon; Byerley Motor Co., Albany, Oregon; Silverton Motor Car Company, Silverton, Oregon; C. J. Shroove & Son, Dallas, Oregon; T. D. Pomeroy, Independence, Oregon; Fred T. Bilyeu, Scio, Oregon; Henry C. Holleman, Harrisburg, Oregon; Fred Gooch, Jr., Mill City, Oregon; Elmer Fitzgerald, Lebanon, Oregon; Austin's Service Station, Brownsville, Oregon; H. W. Morris, Waldport, Oregon; A. J. Gilliam, Toledo, Oregon; Frank Miller, Turort, Oregon; N. J. Arnold, Mouth, Oregon; Bones Brothers, Turner, Oregon.

OAKLAND-PONTIAC

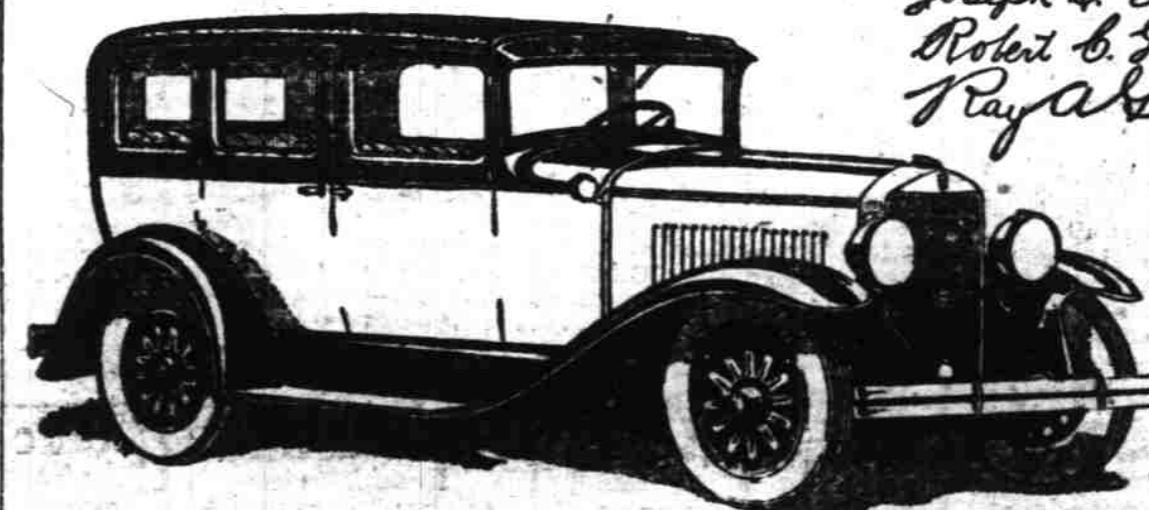
PRODUCTS OF SIXES GENERAL MOTORS

Owners Enjoy Four Speeds



Owners are daily telling how much more they enjoy driving with two high speeds. Third—quiet and quick—for traffic and steep hills; fourth—a new smoothness and swiftness when the road is open. Only personal experience gives you a full appreciation of the Graham-Paige four-speed transmission (standard gear shift). A car is at your disposal.

Joseph B. Graham
Robert C. Graham
Ray A. Graham



This description and other prices printed from 1928 to 1929. One illustrated in black and white. All prices in U. S. dollars. All prices f. o. b. Detroit.

Trumm Motor Car Co.
445 Center Telephone 959
GRAHAM-PAIGE